

Supplementary Data

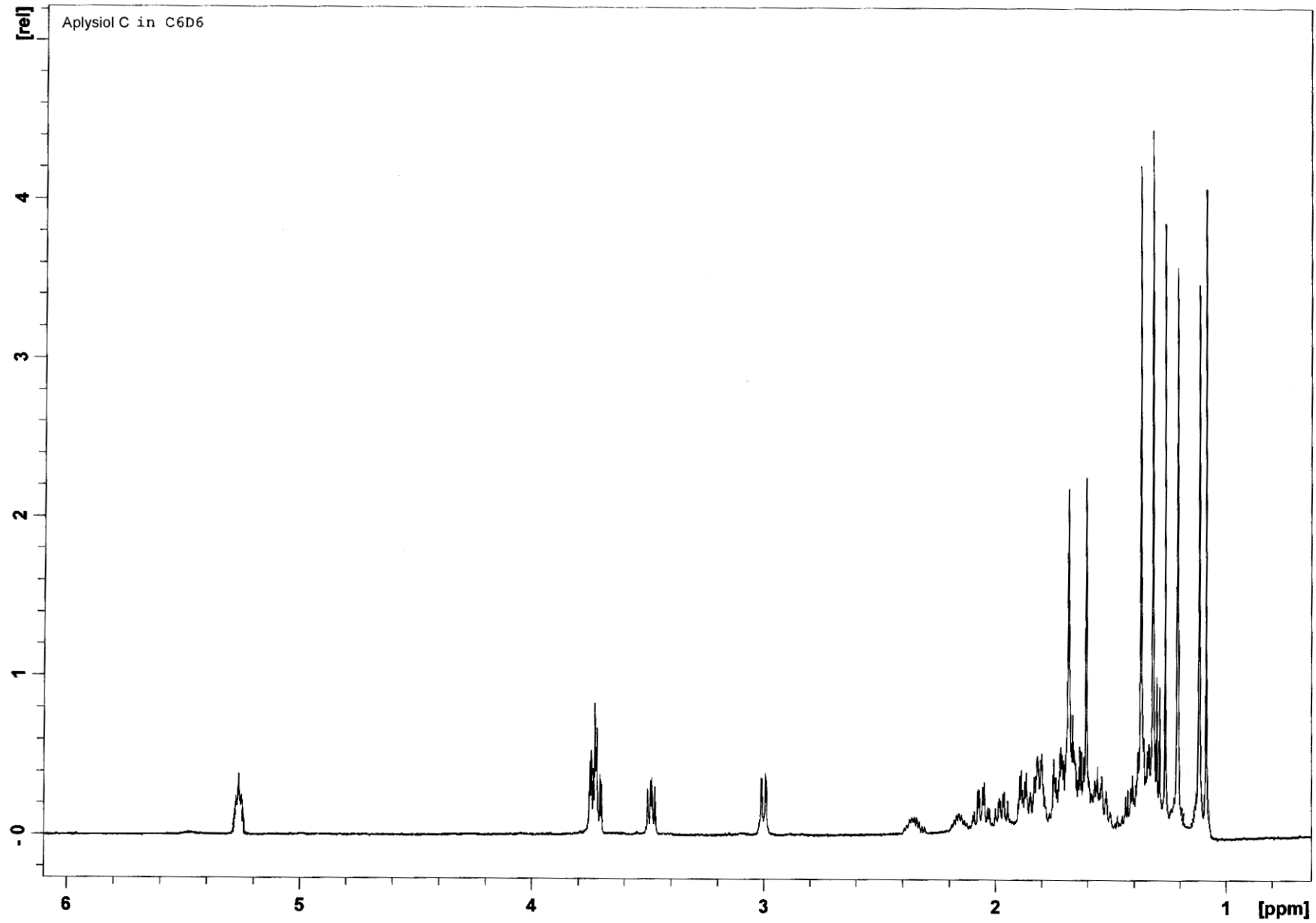
Aplysiols C-E, Brominated Triterpene Polyethers from the Marine Alga *Chondria armata* and a revision of the structure of Aplysiol B

Antonius R. B. Ola^A, *Anna-Marie Babey*^B, *Cherie Motti*^C

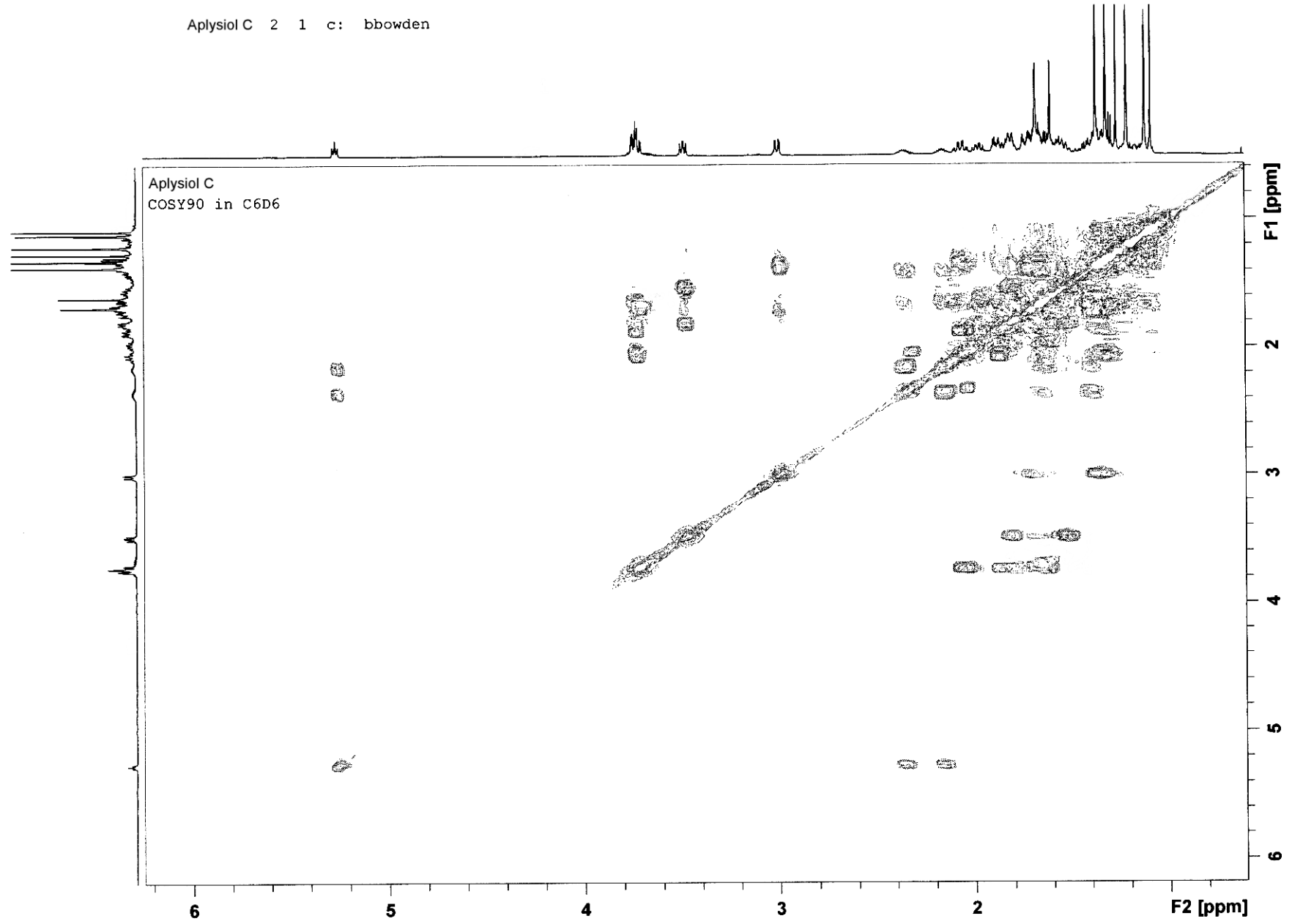
and *Bruce F. Bowden*^{A,D}

1. 600 MHz ¹H NMR Spectrum of Aplysiol C in C₆D₆
2. 600 MHz COSY90 Spectrum of Aplysiol C in C₆D₆
3. Sample 600 MHz Gradient Selective TOCSY Spectrum generated from δ1.25 signal of Aplysiol C in C₆D₆
4. 600 MHz ¹H NMR Spectrum of Aplysiol D in C₆D₆
5. 600 MHz HSQC Spectrum of Aplysiol C in C₆D₆
6. Peaklist for 600 MHz HSQC Spectrum of Aplysiol C in C₆D₆
7. 600 MHz HSQC Spectrum of Aplysiol E in CDCl₃
8. Partial 600 MHz HMBC Spectrum of Aplysiol E in CDCl₃
9. Sample 600 MHz Gradient Selective NOESY Spectrum generated from δ3.90 signal of Aplysiol E in CDCl₃

Chondria 1 1 c: bbowden



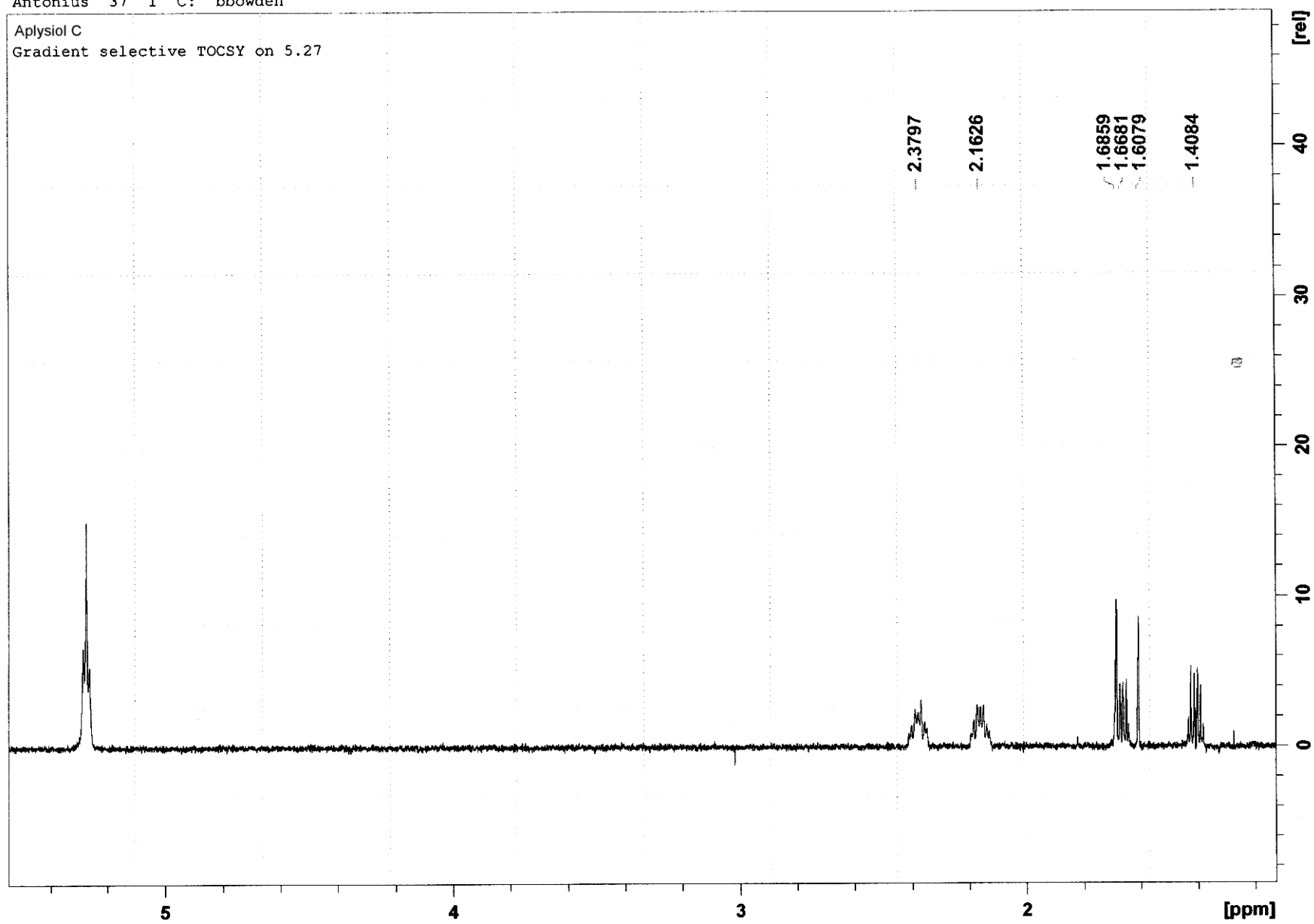
Aplysiol C 2 1 c: bbowden



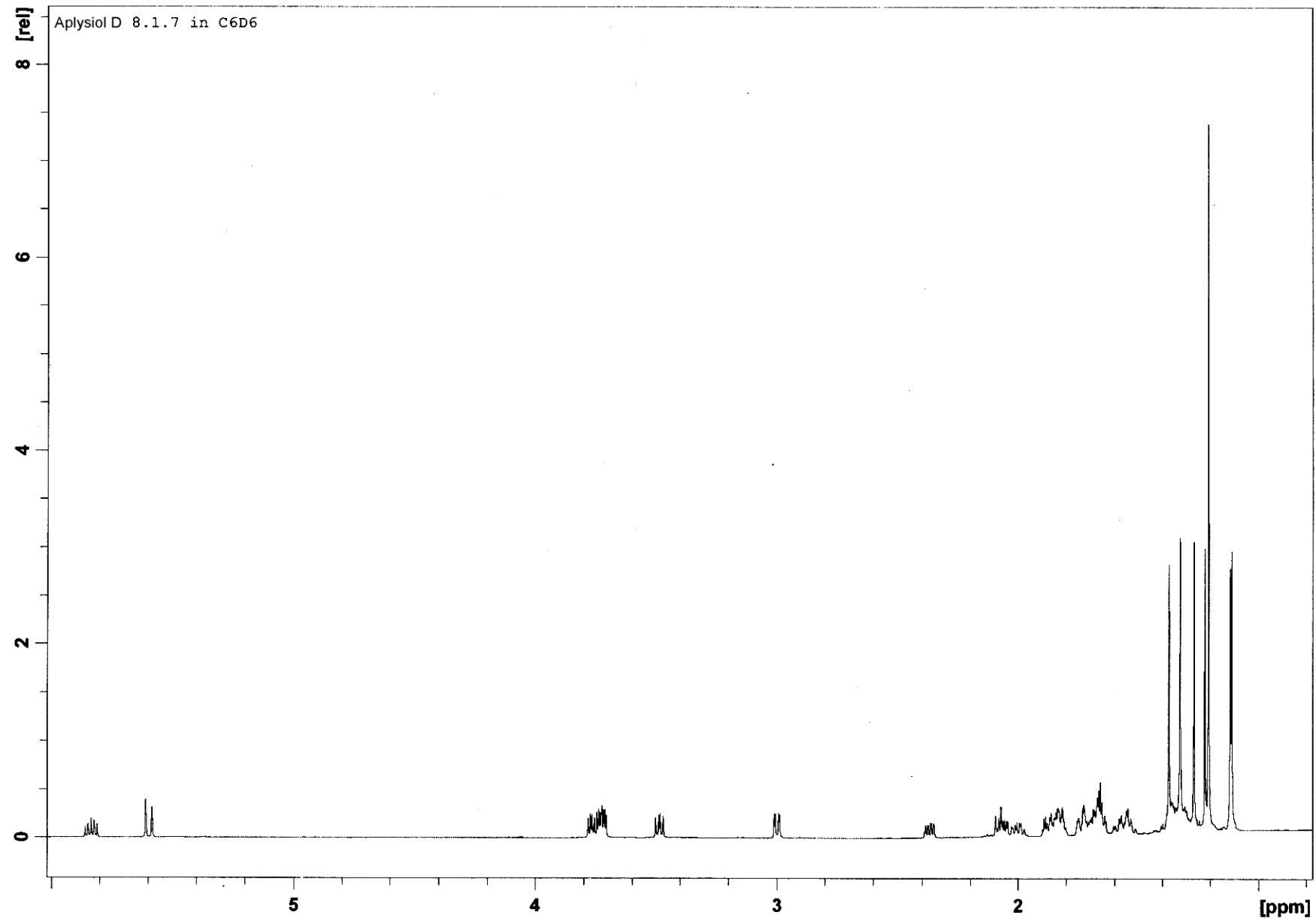
Antonius 37 1 C: bbowden

Aplysiol C

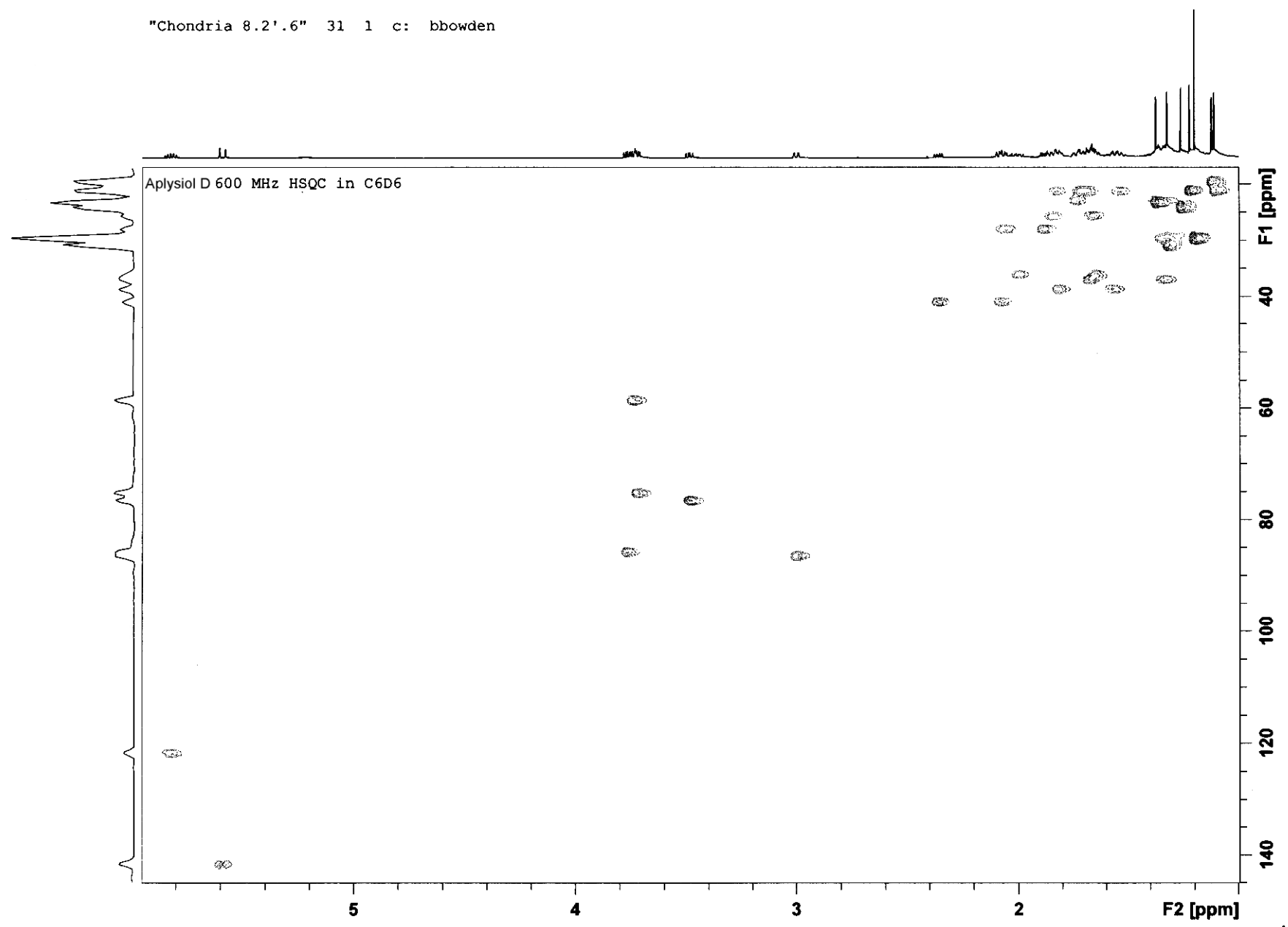
Gradient selective TOCSY on 5.27



Antonius 1 1 C: bbowden

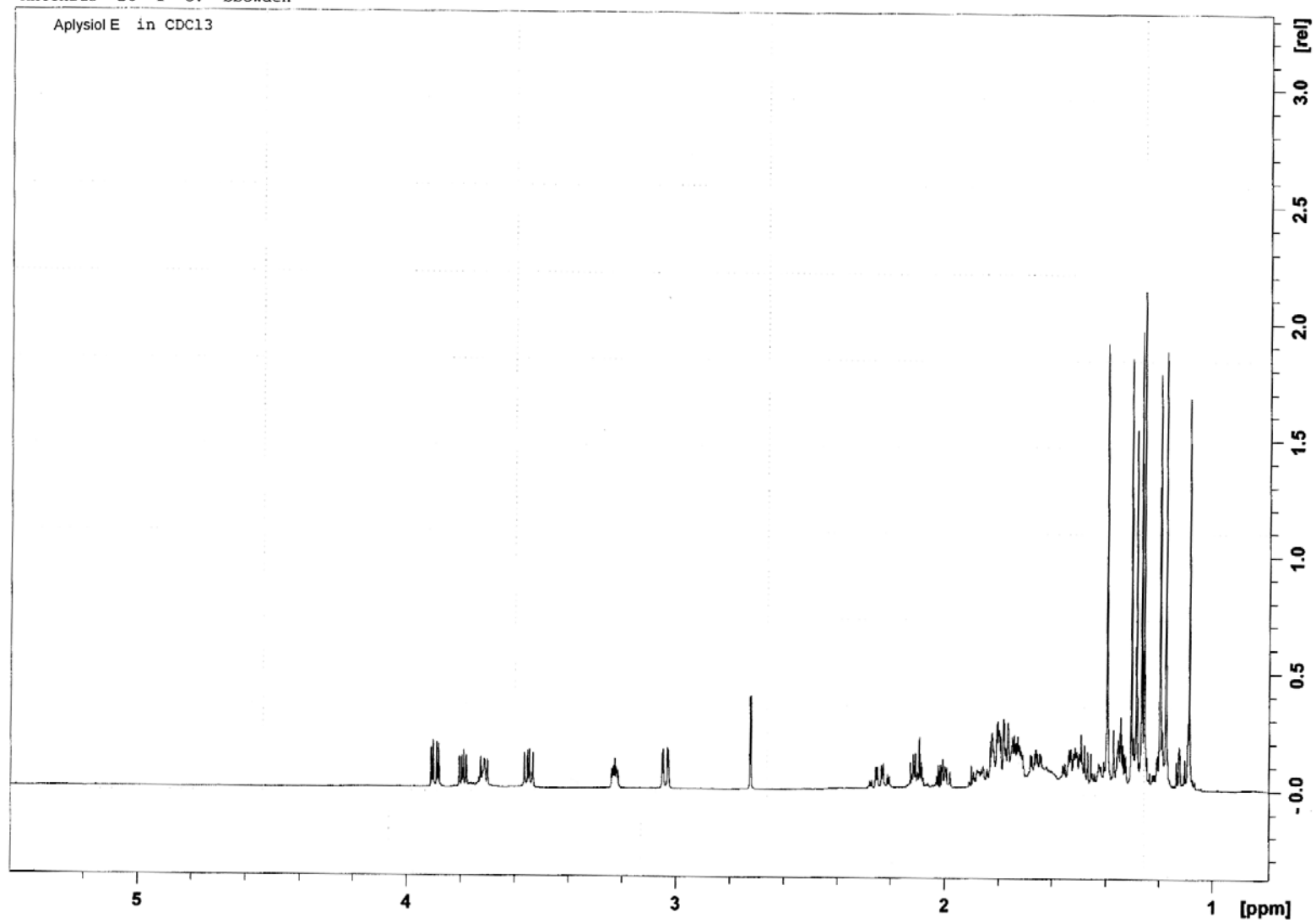


"Chondria 8.2'.6" 31 1 c: bbowden

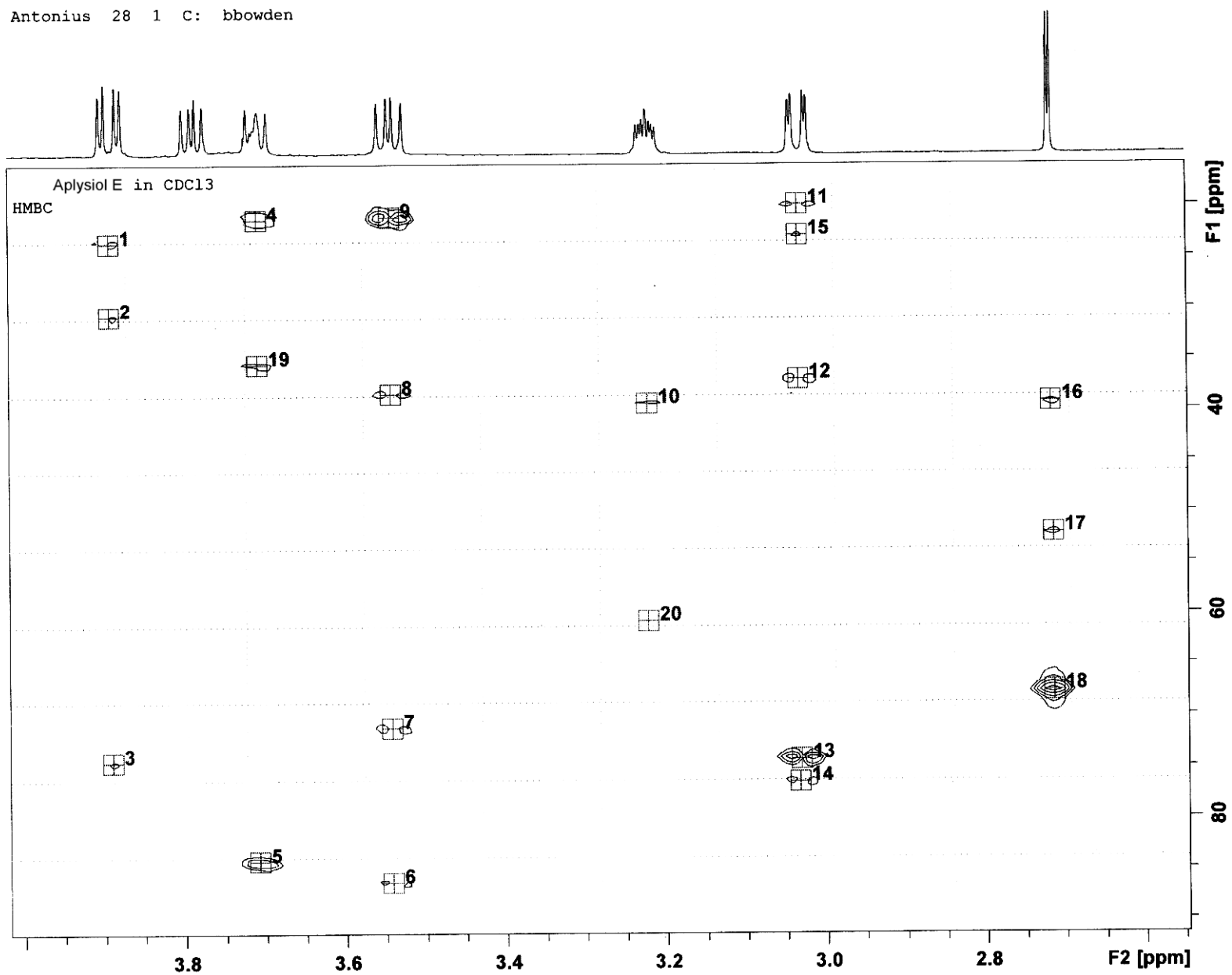


Peak	ν (F2) [ppm]	ν (F1) [ppm]	Intensity	Annotation
1	5.8258	121.8415	539304.19	C21
2	5.5916	141.7261	333390.31	C22
6	3.7660	85.8821	1146762.94	C18
3	3.7248	58.6473	1212994.47	C3
4	3.7133	75.2774	1236232.06	C14
5	3.4818	76.5628	1138839.69	C11
7	2.9982	86.4445	980261.22	C7
8	2.3535	41.0082	727460.19	C20
9	2.0713	41.0082	732904.38	C20
16	2.0526	28.0790	713735.91	C4
14	1.9943	36.1721	603703.88	C16
17	1.8800	28.0297	876788.22	C4
18	1.8404	25.7597	536078.84	C17
29	1.8240	21.3677	639056.25	C12
10	1.8147	38.6888	743811.13	C9
30	1.7377	22.9468	564001.81	C8
28	1.7097	21.4170	990715.75	C13 (both protons)
13	1.6631	36.9617	899307.81	C5
19	1.6584	25.6116	827081.31	C17
15	1.6468	36.2214	771893.44	C16
11	1.5721	38.6888	692493.75	C9
27	1.5371	21.4170	614093.38	C12
22	1.3739	23.3910	4985236.91	C1 and C8
12	1.3389	37.0110	768105.97	C5
20	1.3225	30.7932	4246908.03	C25
23	1.2596	24.2299	3669655.72	C29
24	1.2199	21.3183	3396656.34	C27
21	1.1966	29.5595	7580679.09 (x2)	C24 and C30
26	1.1173	19.6405	3638476.56	C26
25	1.1080	21.1703	3415394.00	C28

Antonius 26 1 C: bbowden



Antonius 28 1 C: bbowden



Antonius 39 1 C: bbowden

Aplysiol E in CDCl₃
Gradient selective NOESY on 3.90

