

Supplementary Material

Probing for the pharmacophore of the cytotoxic neoclerodane salvileucalin B

Nora Heinrich,^A Martin G. Banwell,^{A,C} Anthony C. Willis,^A Ian A. Cade,^A

Robert J. Capon,^B and Xiao-Cong Huang^B

^AResearch School of Chemistry, Institute of Advanced Studies, The Australian National University,
Canberra, ACT 0200, Australia.

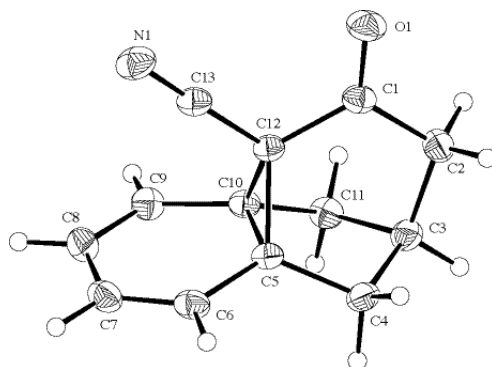
^BDivision of Chemistry and Structural Biology, Institute for Molecular Bioscience, The University of Queensland,
St Lucia, QLD 4072, Australia.

^CCorresponding author. Email: mgb@rsc.anu.edu.au

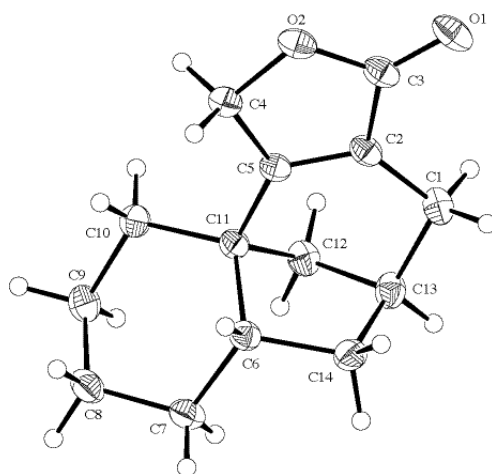
Contents

ORTEPs Derived from the Single-crystal X-ray Analyses of Compounds 8 , 17 and 21	S2
Cytotoxicity Test Results for Compounds 2 and 12–17	S3–S4
¹ H or ¹³ C NMR Spectra of Compounds 2 and 4–9 and 11–21	S5–S22

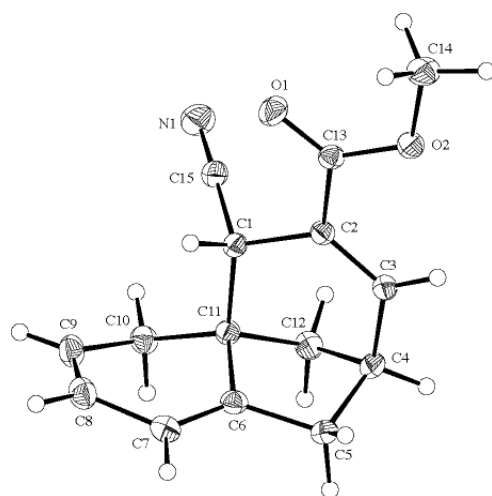
ORTEPs Derived from the Single-crystal X-ray Analyses of Compounds **8**, **17** and **21**



ORTEP derived from the single-crystal X-ray analysis of compound **8**. Anisotropic displacement ellipsoids display 30% probability levels. Hydrogen atoms are drawn as circles with small radii.

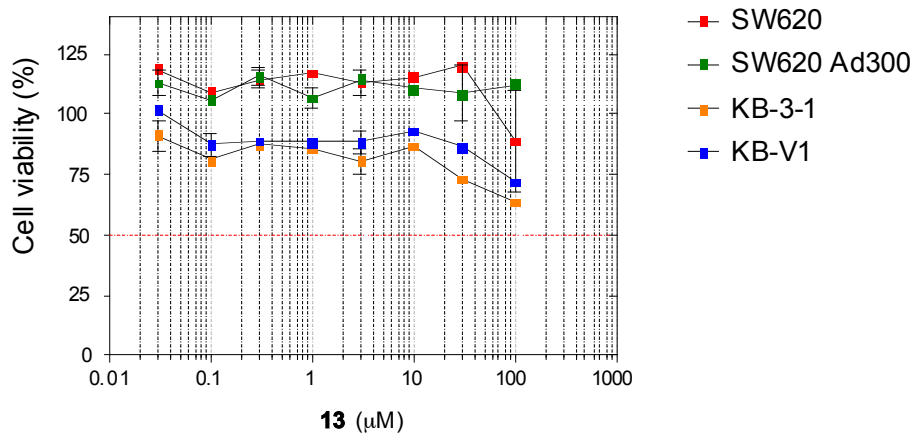
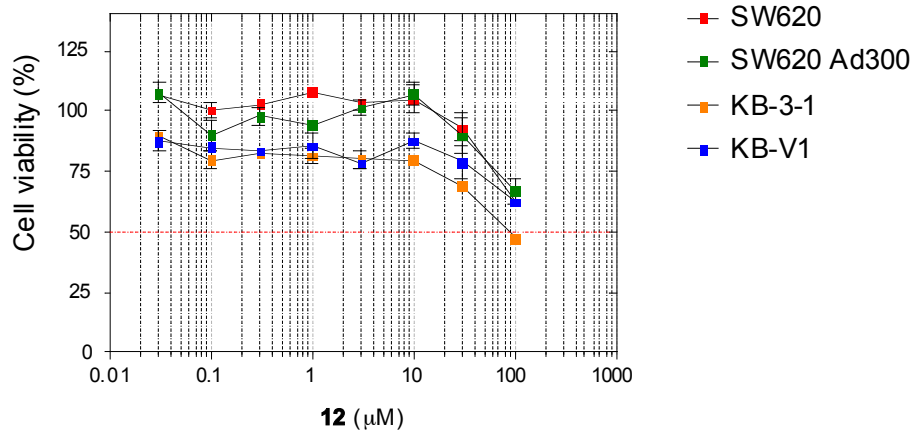
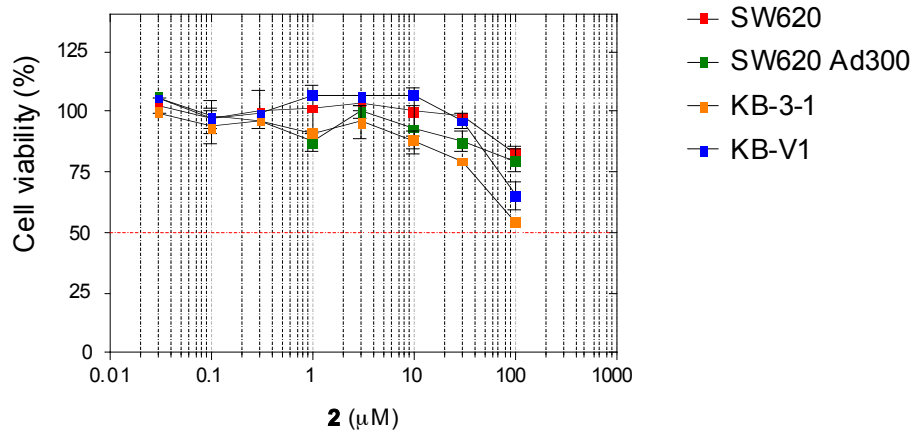


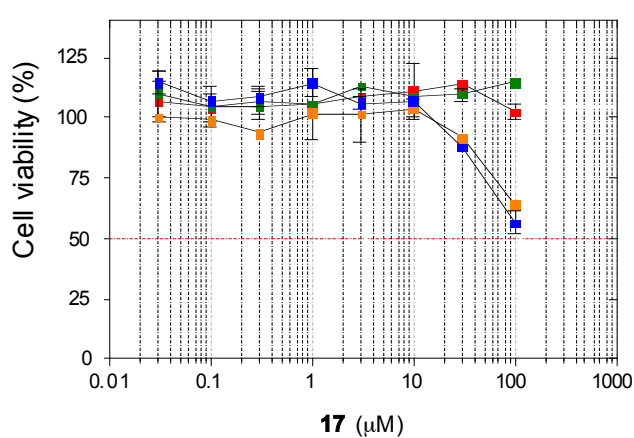
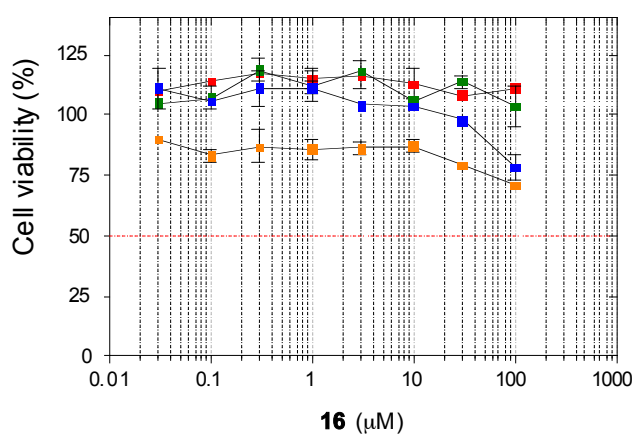
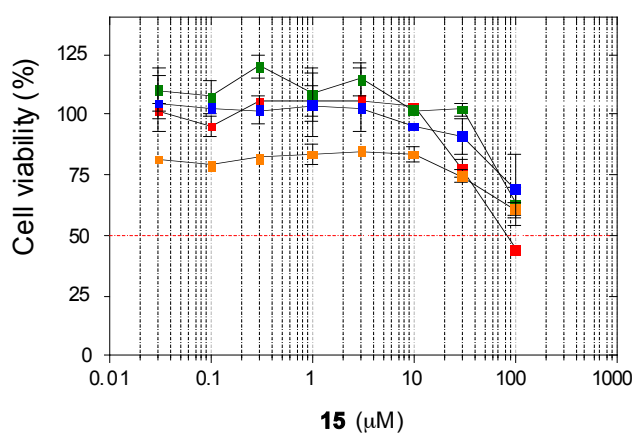
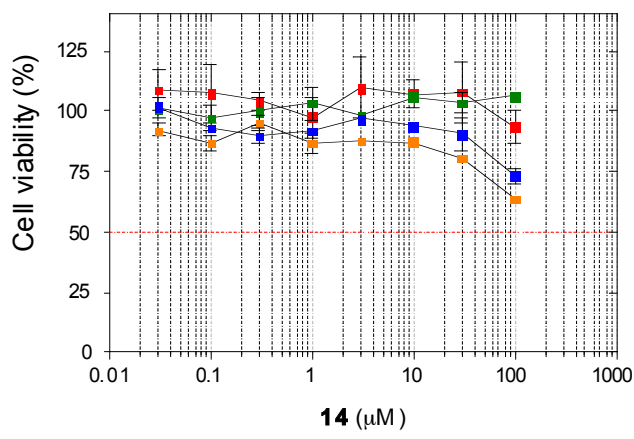
ORTEP derived from the single-crystal X-ray analysis of compound **17**. Anisotropic displacement ellipsoids display 30% probability levels. Hydrogen atoms are drawn as circles with small radii.

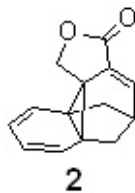


ORTEP derived from the single-crystal X-ray analysis of compound **21**. Anisotropic displacement ellipsoids display 30% probability levels. Hydrogen atoms are drawn as circles with small radii.

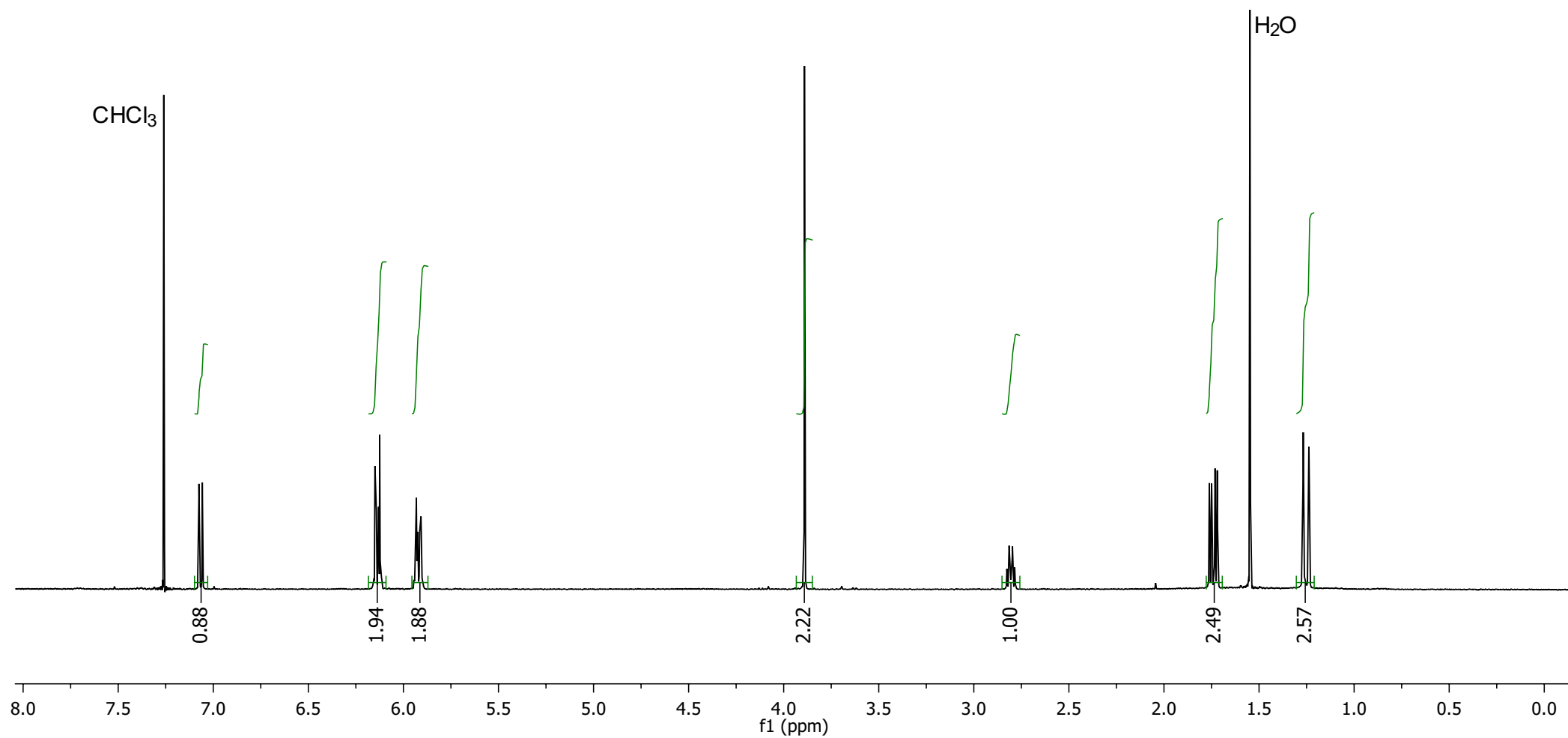
Cytotoxicity Test Results for Compounds 2 and 12-17

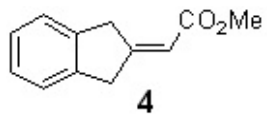




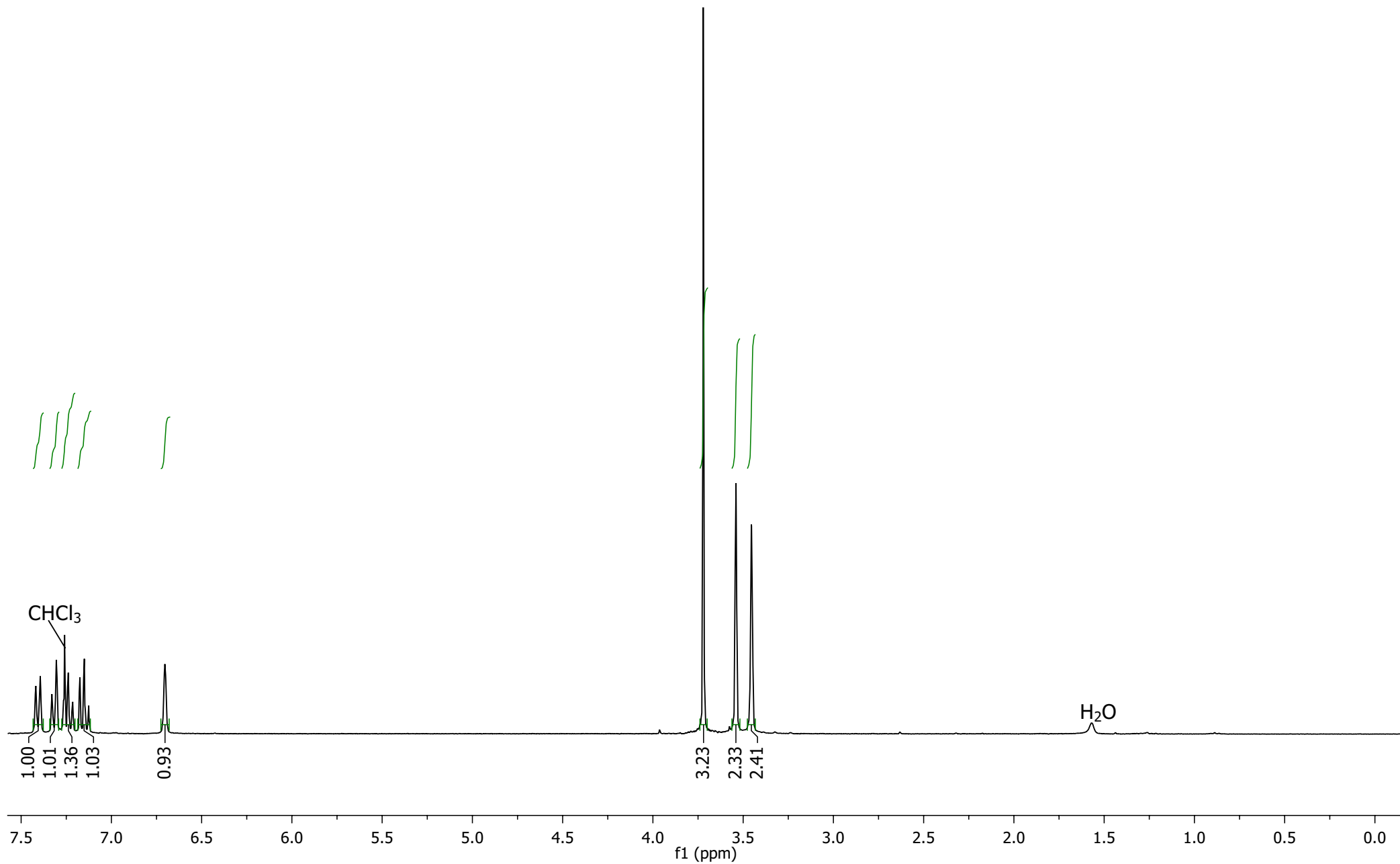


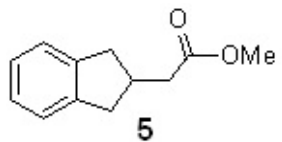
400 MHz ^1H NMR Spectrum of Compound **2** Recorded in CDCl_3



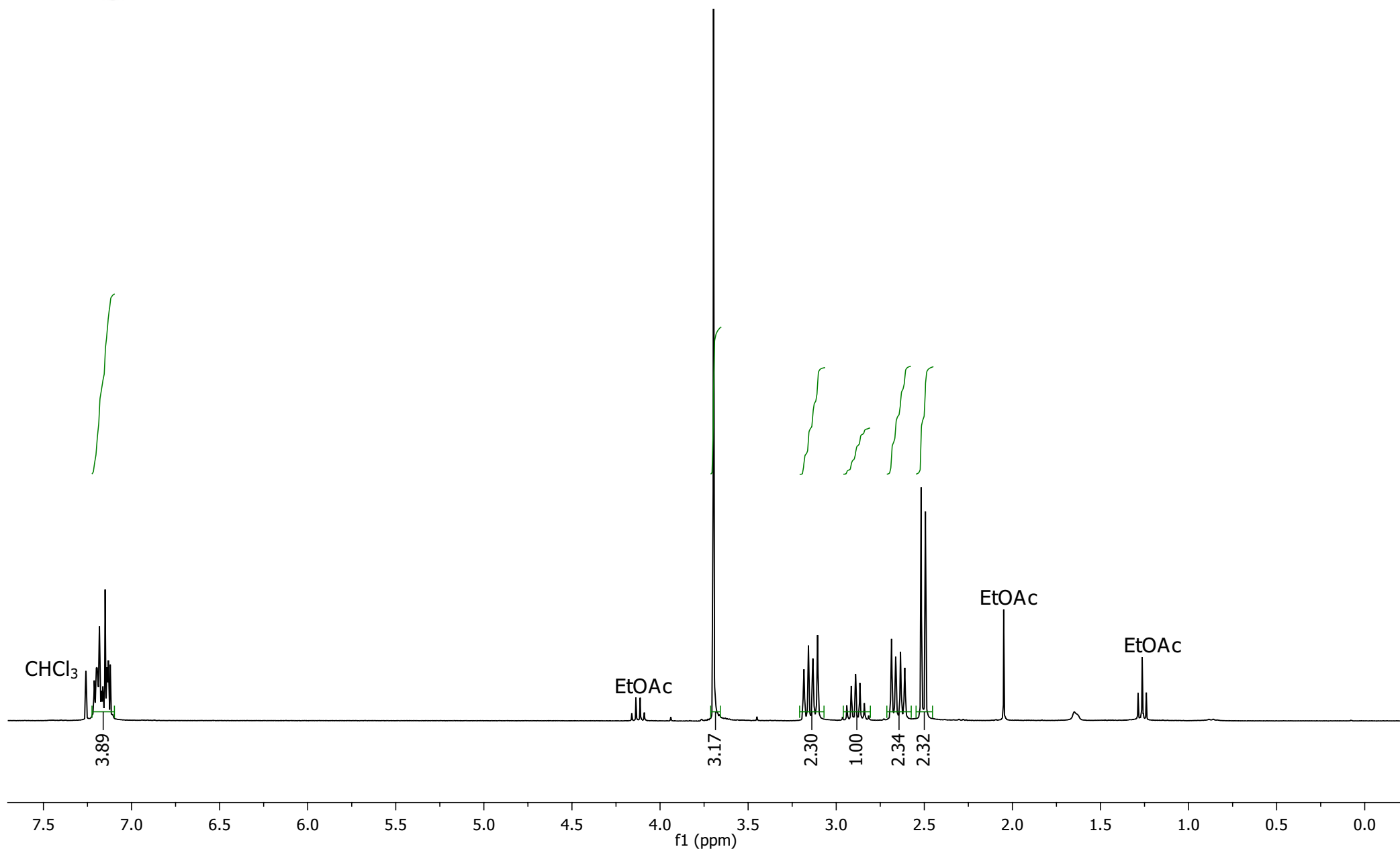


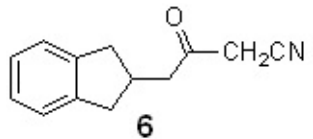
300 MHz ^1H NMR Spectrum of Compound **4** Recorded in CDCl_3



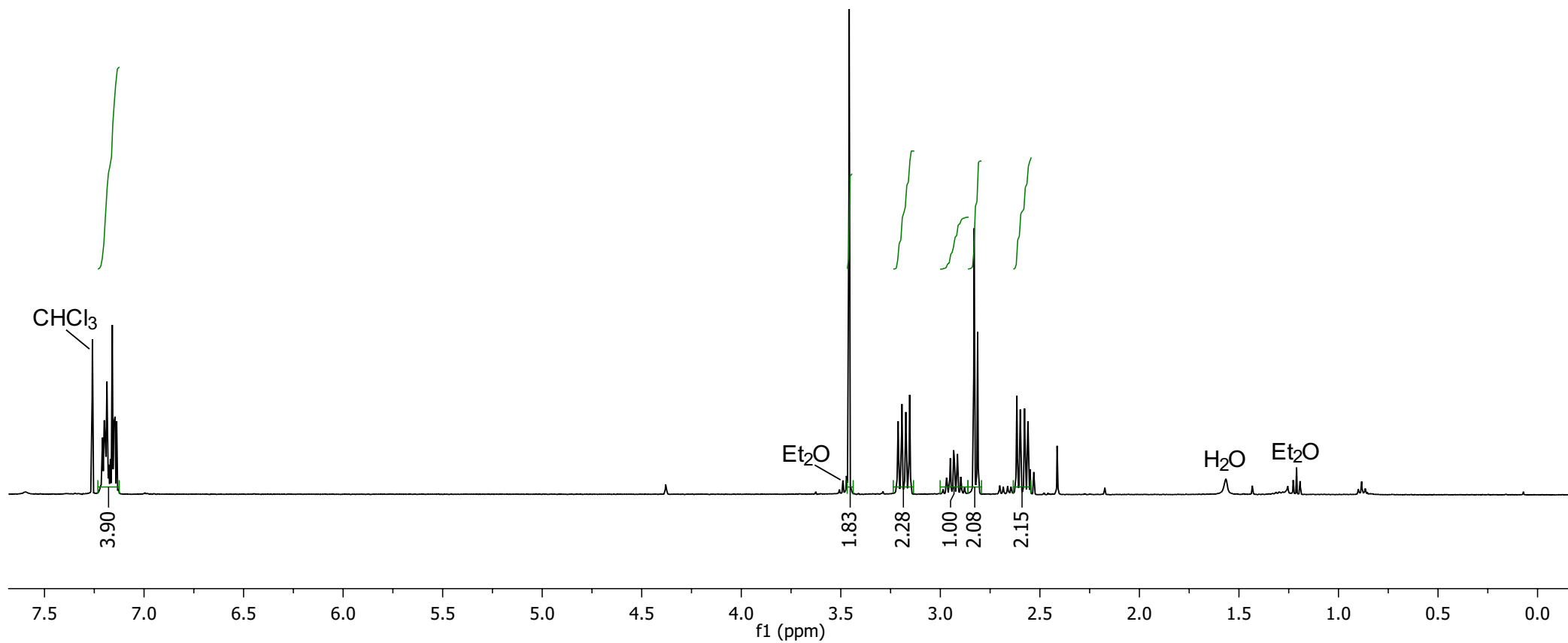


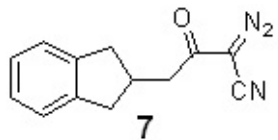
300 MHz ^1H NMR Spectrum of Compound **5** Recorded in CDCl_3



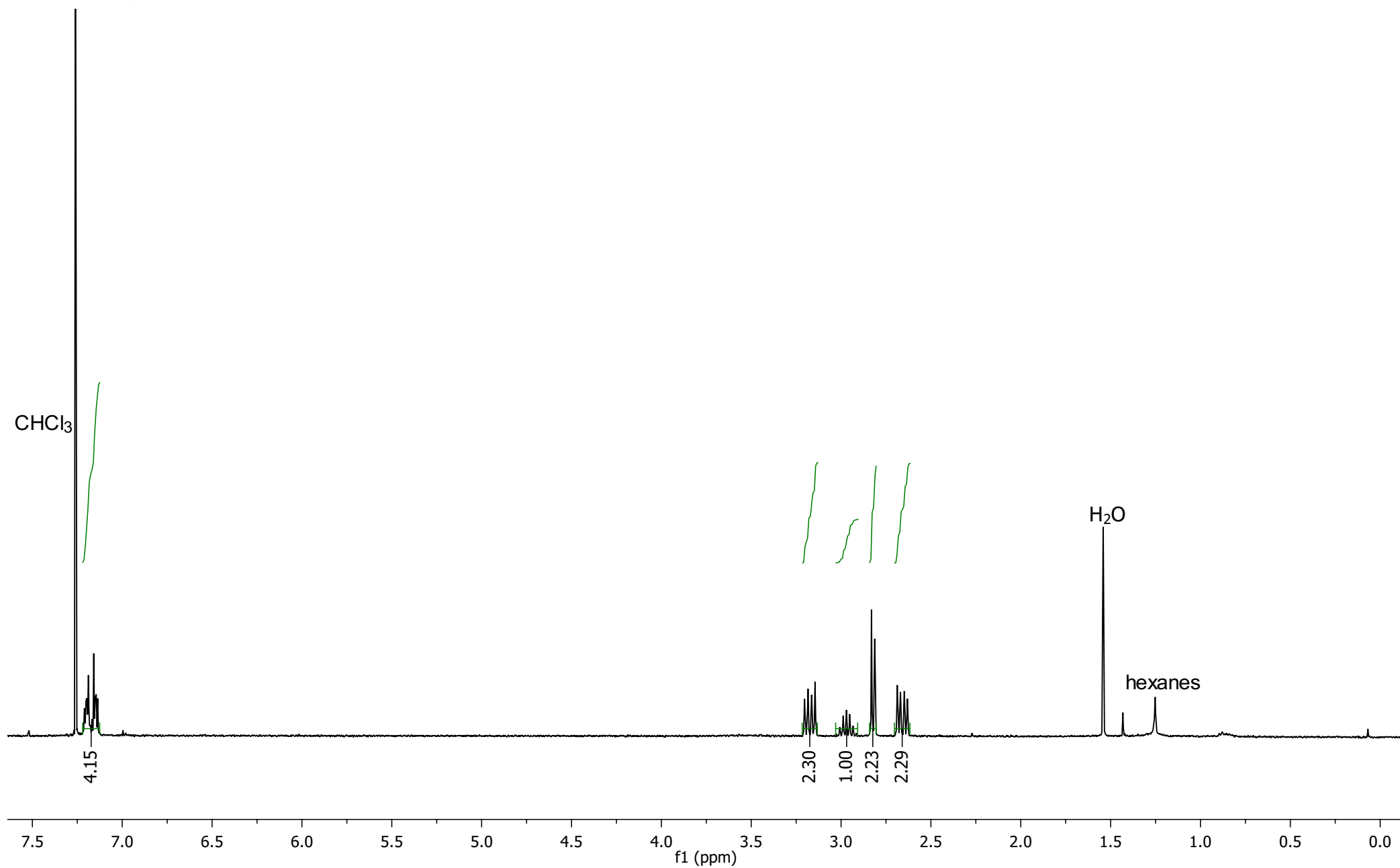


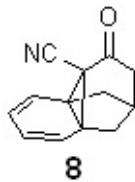
400 MHz ^1H NMR Spectrum of Compound **6** Recorded in CDCl_3



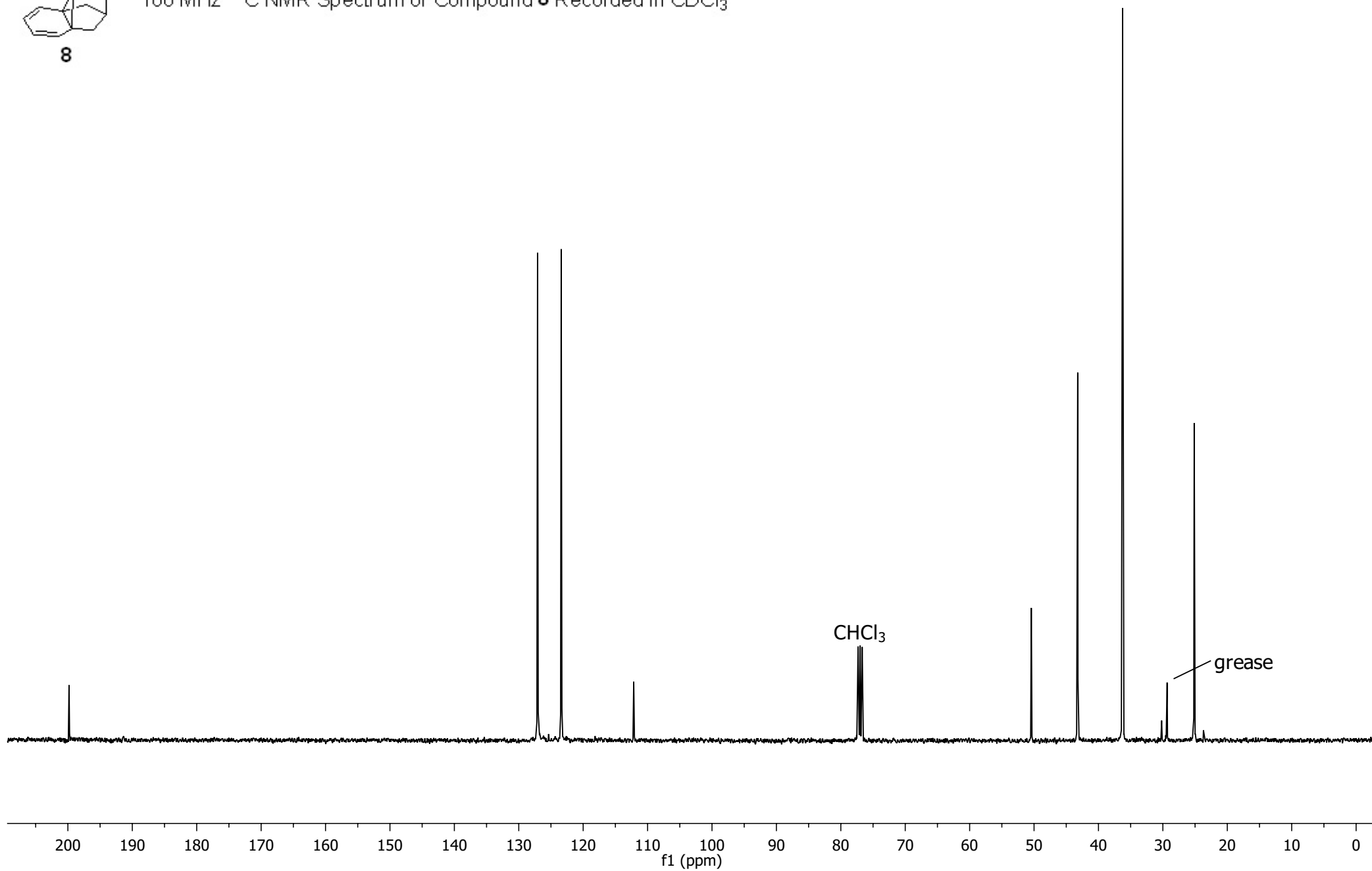


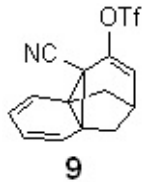
400 MHz ¹H NMR Spectrum of Compound **7** Recorded in CDCl₃



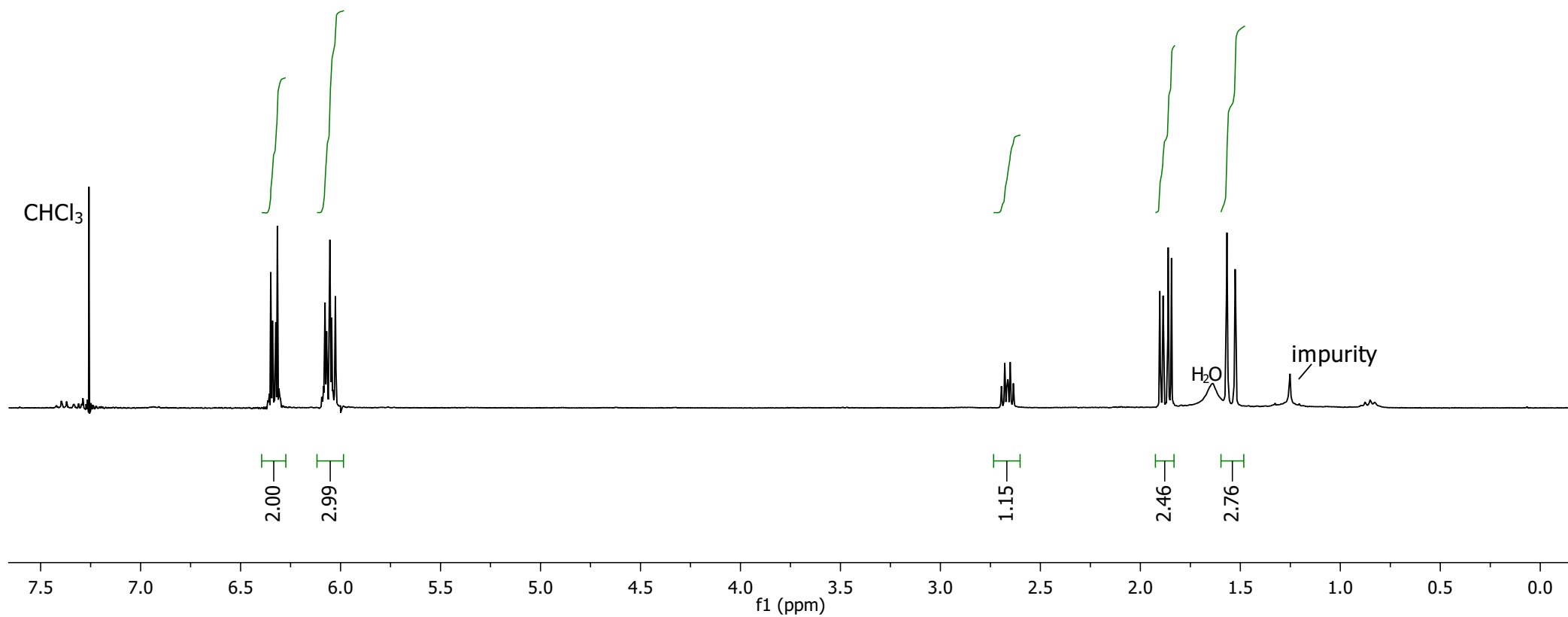


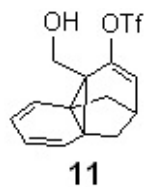
100 MHz ^{13}C NMR Spectrum of Compound **8** Recorded in CDCl_3



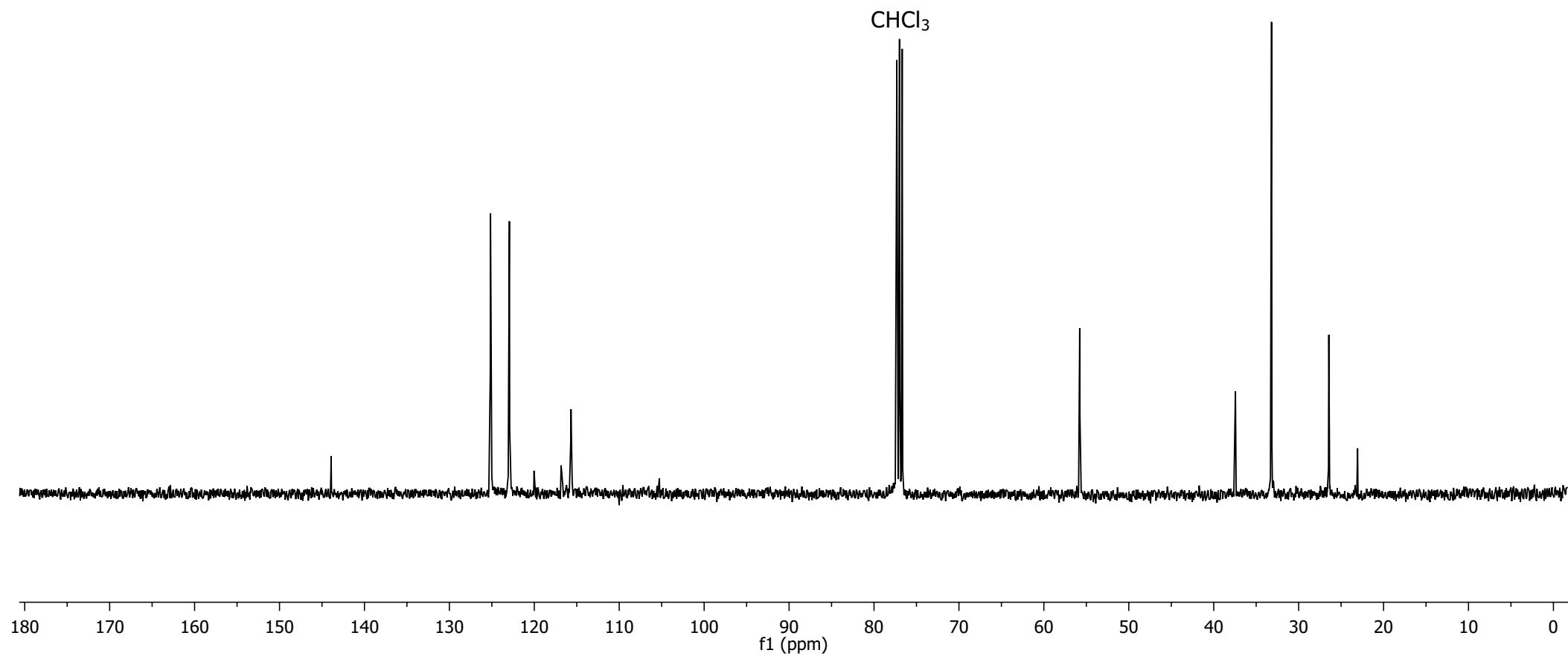


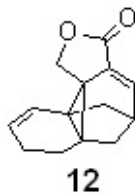
300 MHz ^1H NMR Spectrum of Compound **9** Recorded in CDCl_3



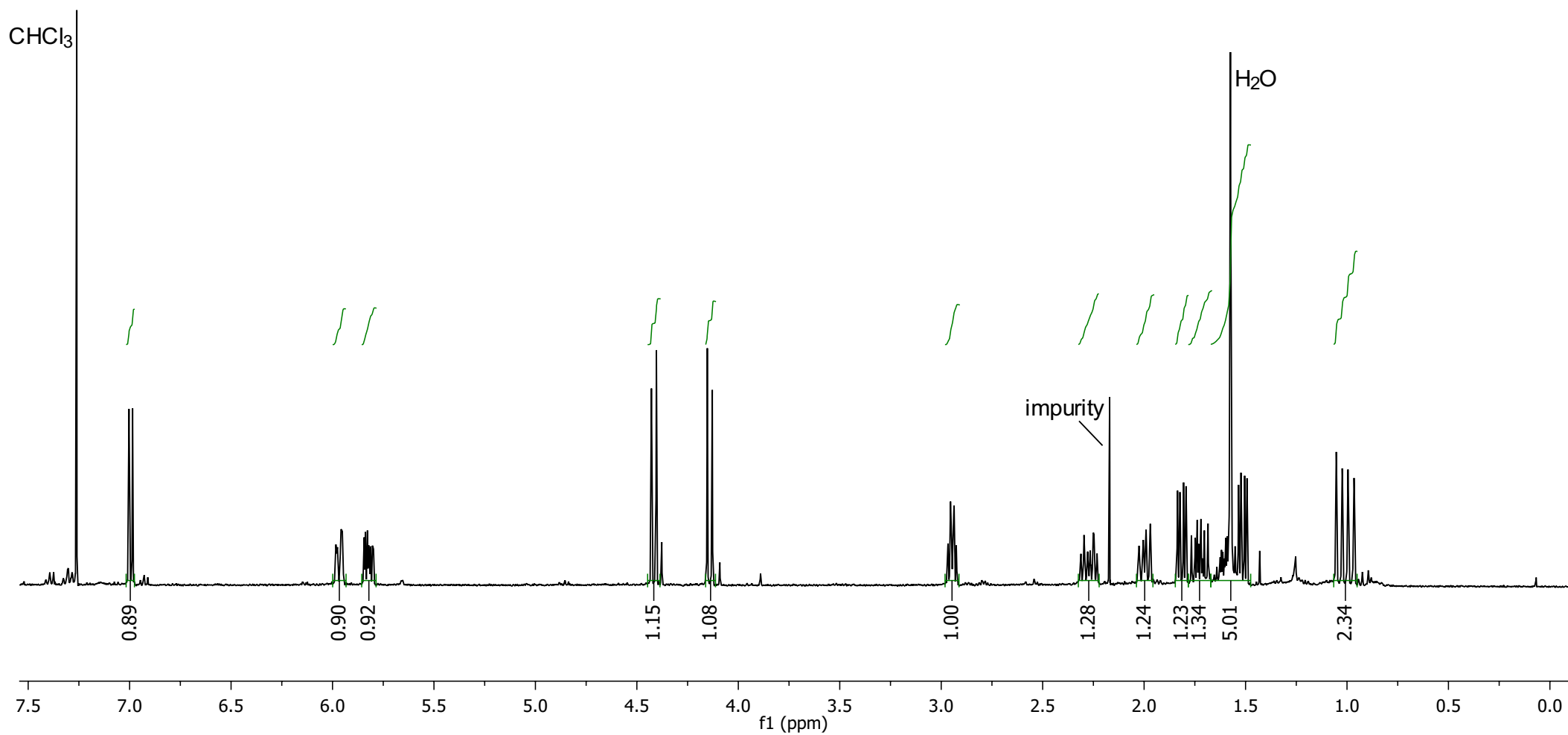


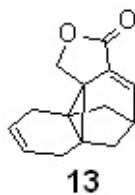
100 MHz ^{13}C NMR Spectrum of Compound **11** Recorded in CDCl_3



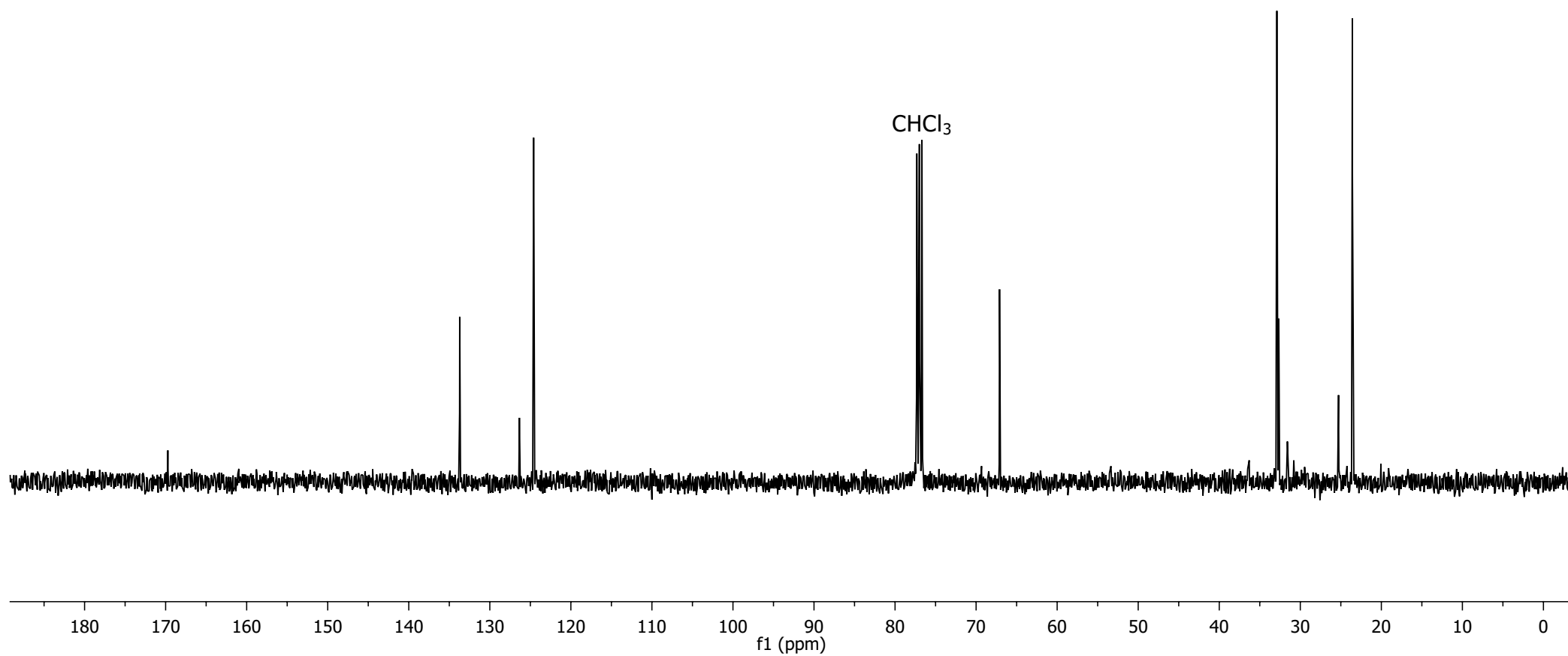


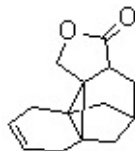
400 MHz ^1H NMR Spectrum of Compound **12** Recorded in CDCl_3





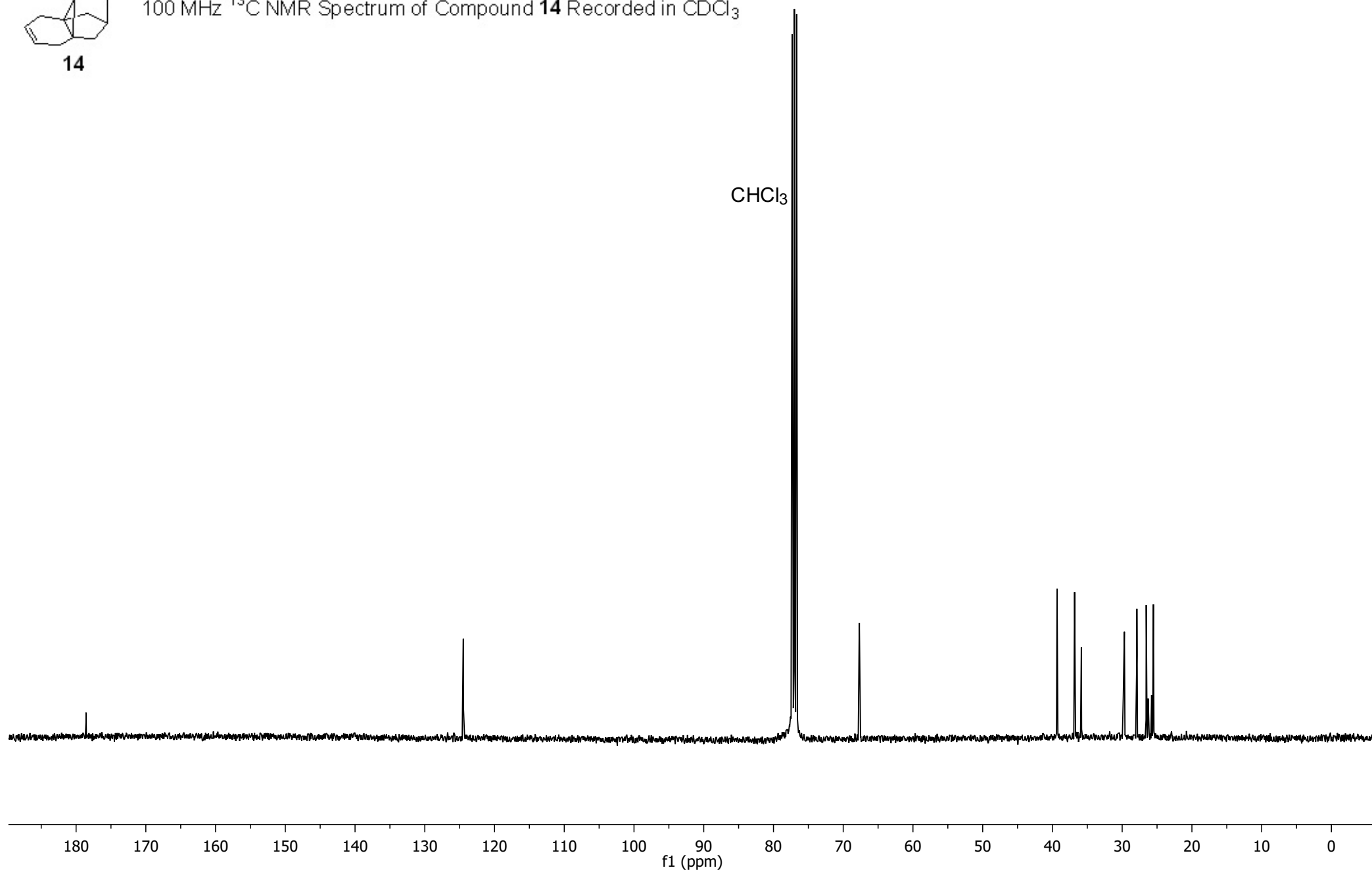
100 MHz ^{13}C NMR Spectrum of Compound **13** Recorded in CDCl_3

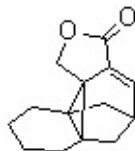




14

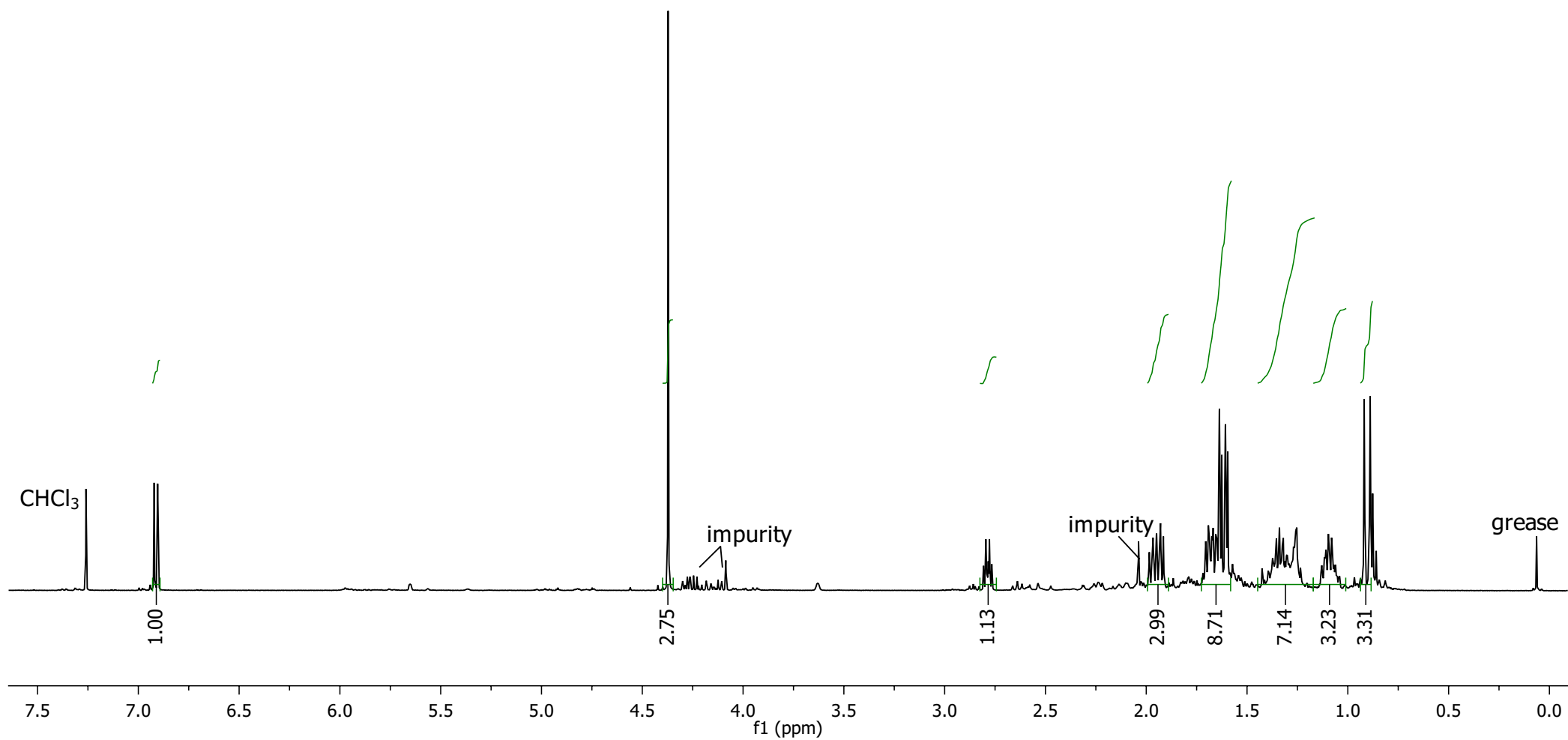
100 MHz ^{13}C NMR Spectrum of Compound **14** Recorded in CDCl_3

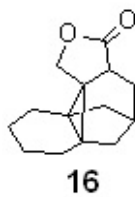




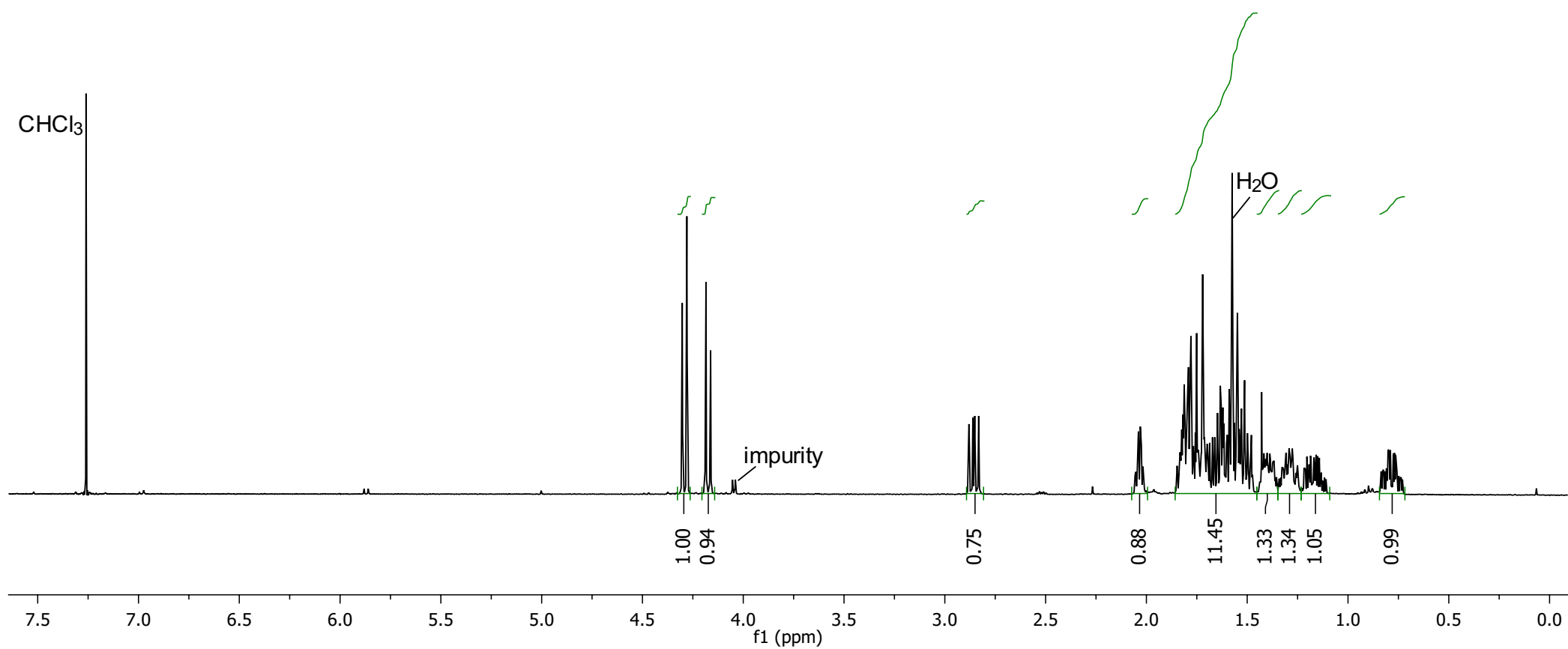
15

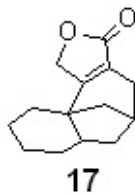
400 MHz ^1H NMR Spectrum of Compound **15** Recorded in CDCl_3



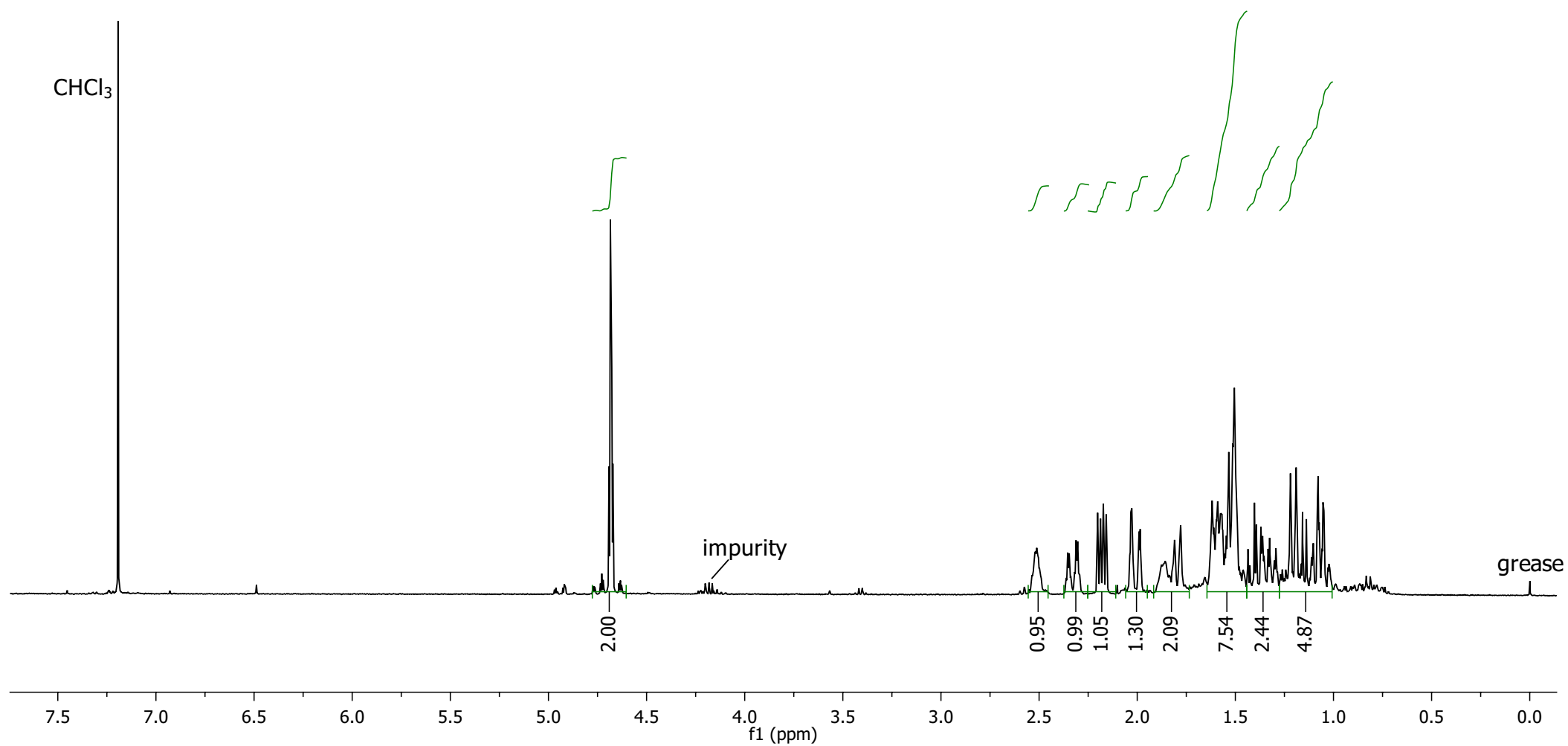


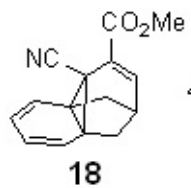
400 MHz ^1H NMR Spectrum of Compound **16** Recorded in CDCl_3



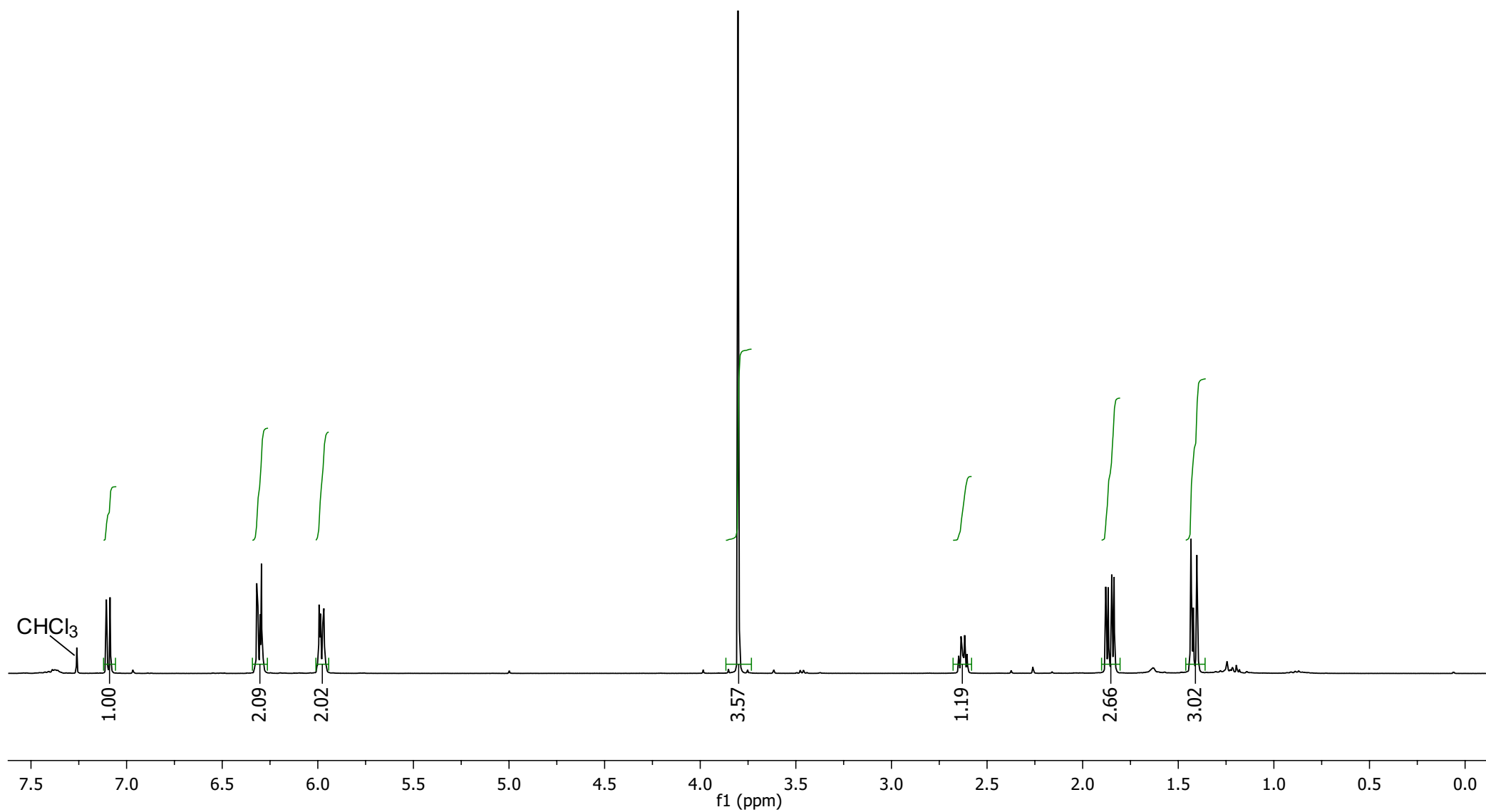


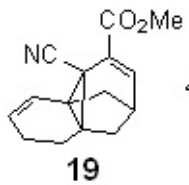
400 MHz ^1H NMR Spectrum of Compound **17** Recorded in CDCl_3



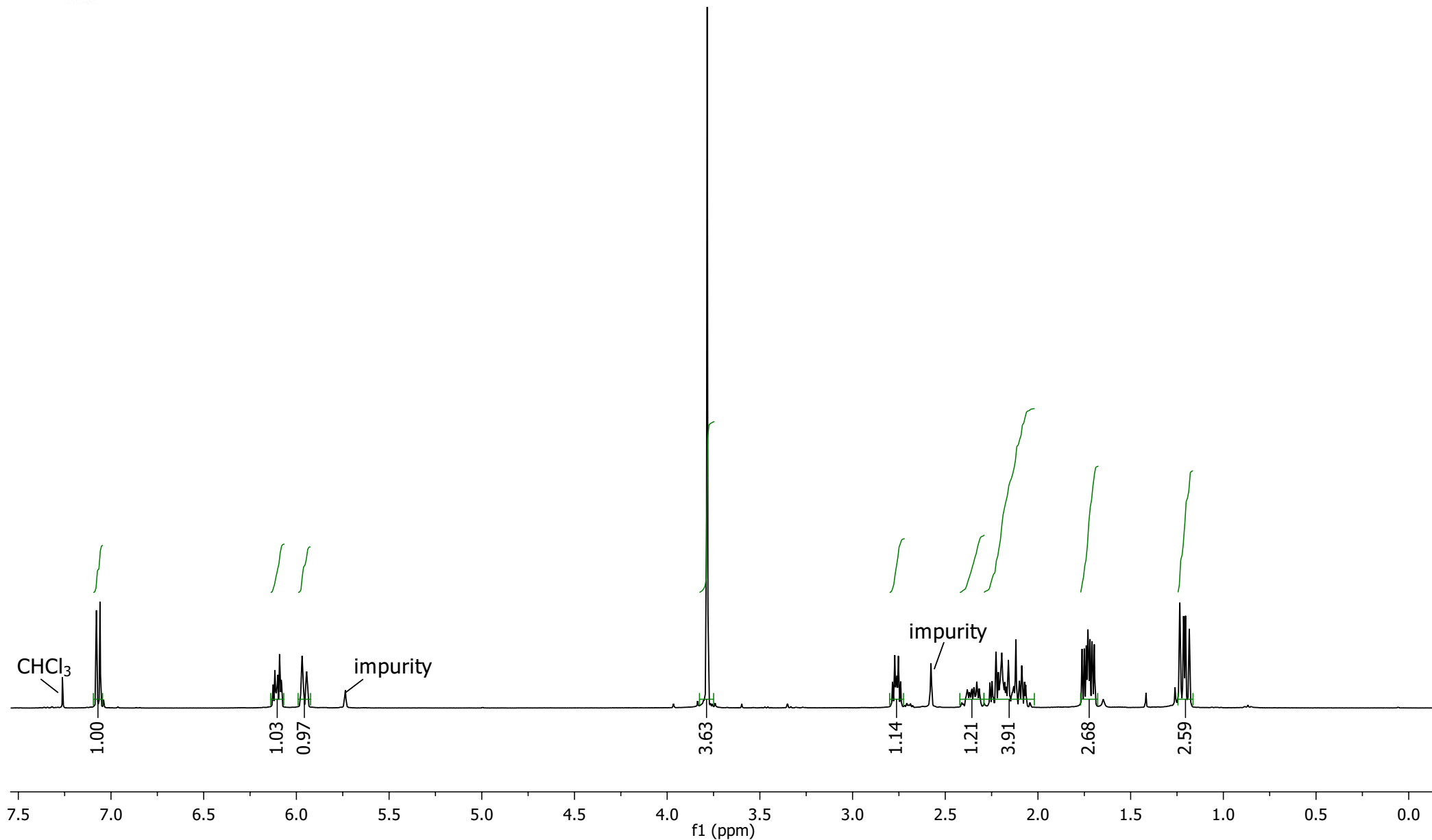


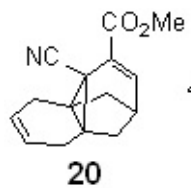
400 MHz ^1H NMR Spectrum of Compound **18** Recorded in CDCl_3



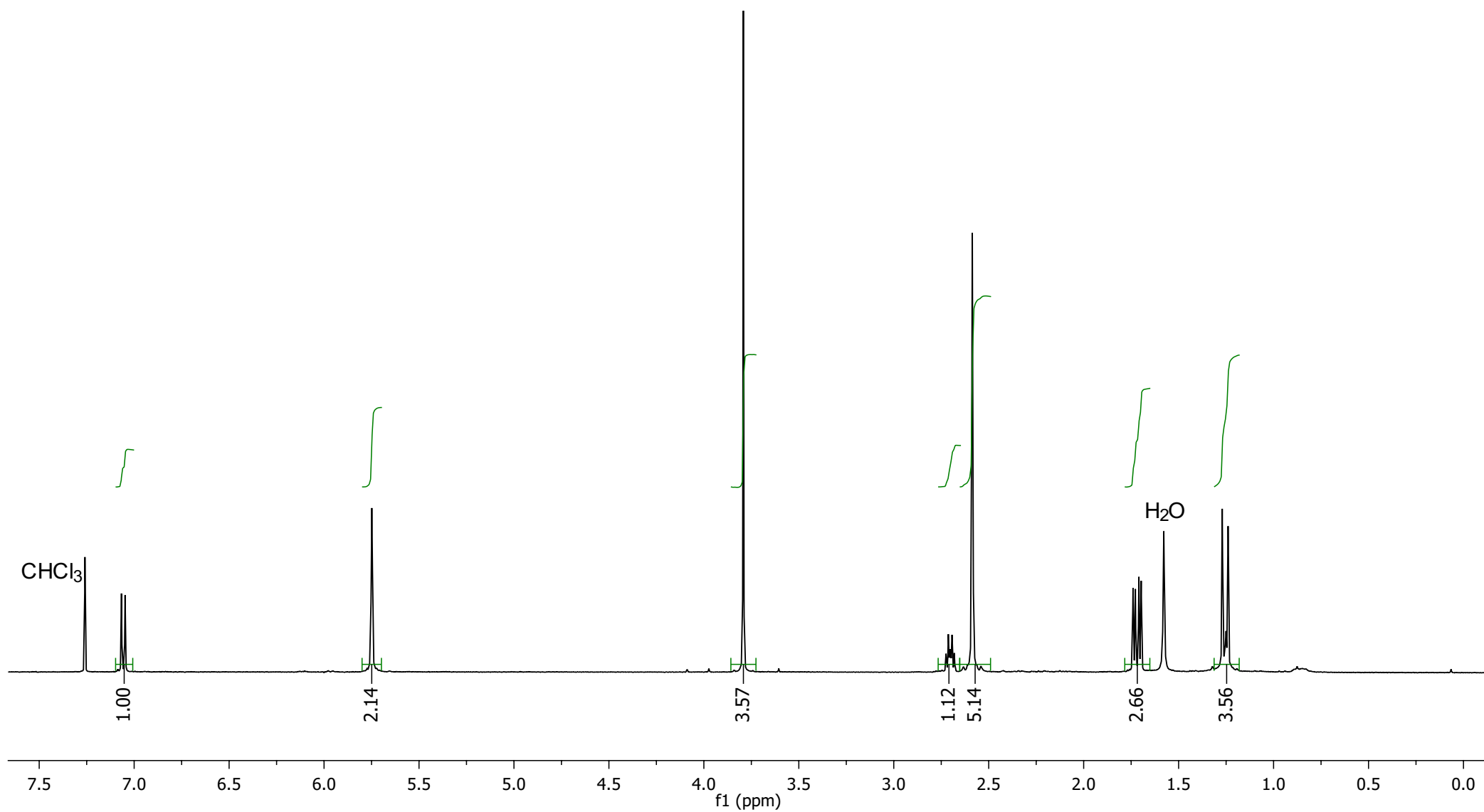


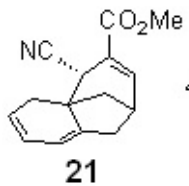
400 MHz ^1H NMR Spectrum of Compound **19** Recorded in CDCl_3





400 MHz ^1H NMR Spectrum of Compound **20** Recorded in CDCl_3





400 MHz ^1H NMR Spectrum of Compound **21** Recorded in CDCl_3

