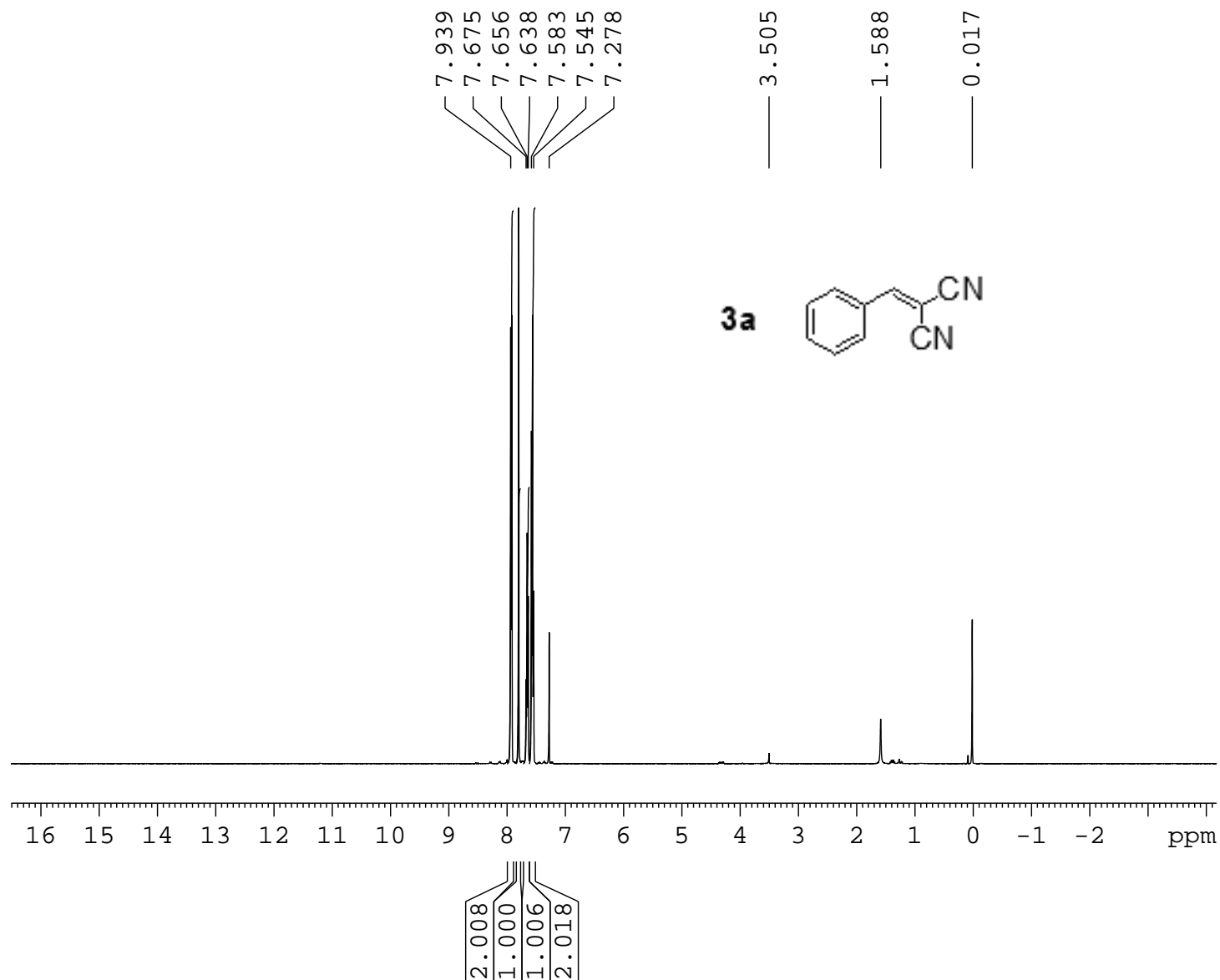


PG-2



Current Data Parameters

NAME PG-2  
EXPNO 1  
PROCNO 1

F2 - Acquisition Parameters

Date\_ 20110615  
Time 11.37  
INSTRUM spect  
PROBHD 5 mm PABBO BB-  
PULPROG zg30  
TD 32768  
SOLVENT CDCl3  
NS 16  
DS 0  
SWH 8278.146 Hz  
FIDRES 0.252629 Hz  
AQ 1.9792372 sec  
RG 228.1  
DW 60.400 usec  
DE 6.00 usec  
TE 673.2 K  
D1 1.00000000 sec  
TD0 1

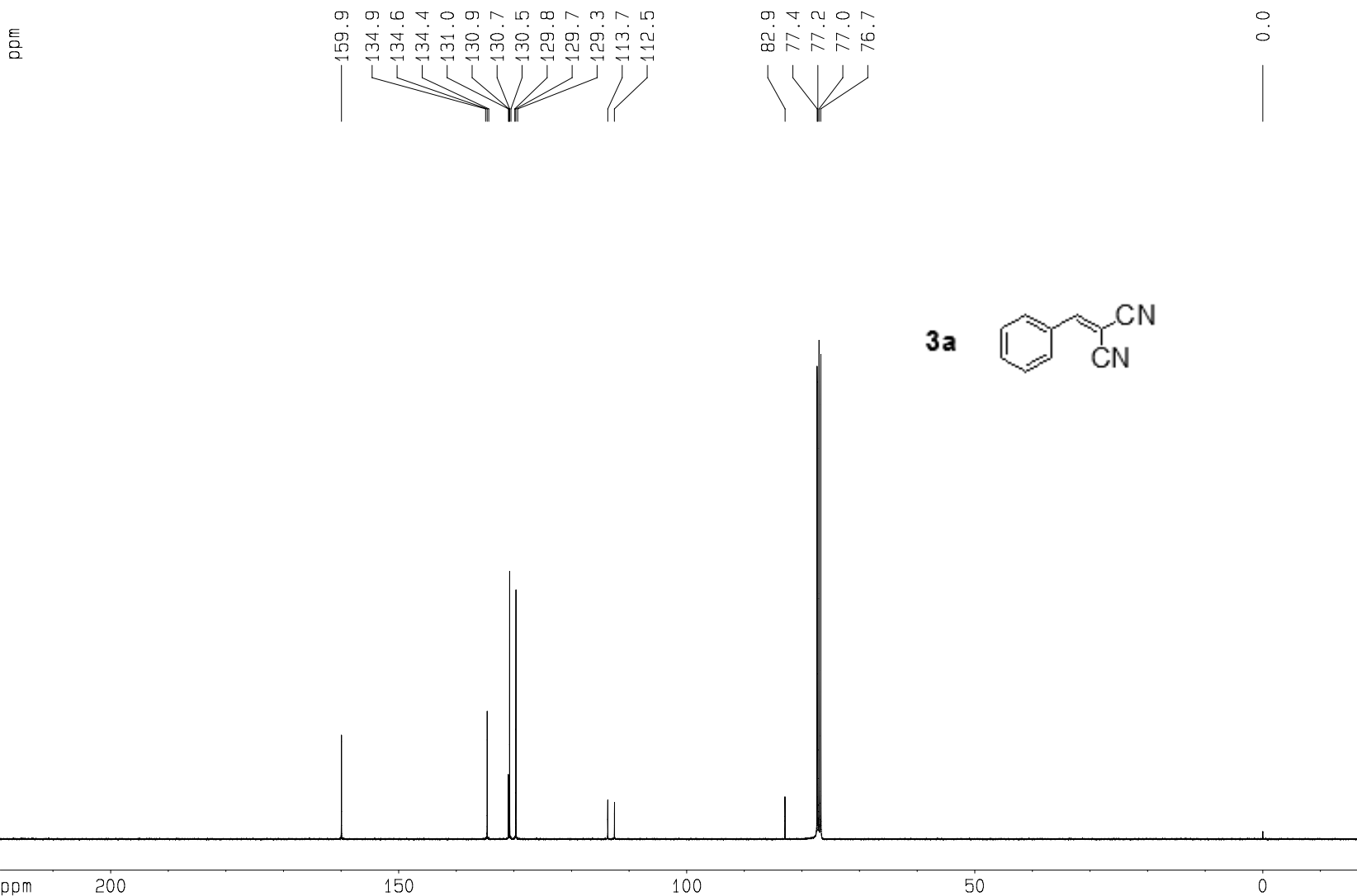
===== CHANNEL f1 =====

NUC1 1H  
P1 9.40 usec  
PL1 -4.00 dB  
SFO1 400.1324710 MHz

F2 - Processing parameters

SI 32768  
SF 400.1300034 MHz  
WDW EM  
SSB 0  
LB 0.30 Hz  
GB 0  
PC 1.00

ppm



## Current Data Parameters

NAME PG-2  
EXPNO 2  
PROCNO 1

## F2 - Acquisition Parameters

Date\_ 20110614  
Time 19.13  
INSTRUM spect  
PROBHD 5 mm PABBO BB-  
PULPROG zgpg30  
TD 65536  
SOLVENT CDC13  
NS 15360  
DS 4  
SWH 23980.814 Hz  
FIDRES 0.365918 Hz  
AQ 1.3664756 sec  
RG 512  
DW 20.850 usec  
DE 6.00 usec  
TE 673.2 K  
d11 0.03000000 sec  
D1 2.00000000 sec  
DELTA 1.89999998 sec  
TD0 15

## ===== CHANNEL f1 =====

NUC1 13C  
P1 7.00 usec  
PL1 -3.00 dB  
SF01 100.6228298 MHz

## ===== CHANNEL f2 =====

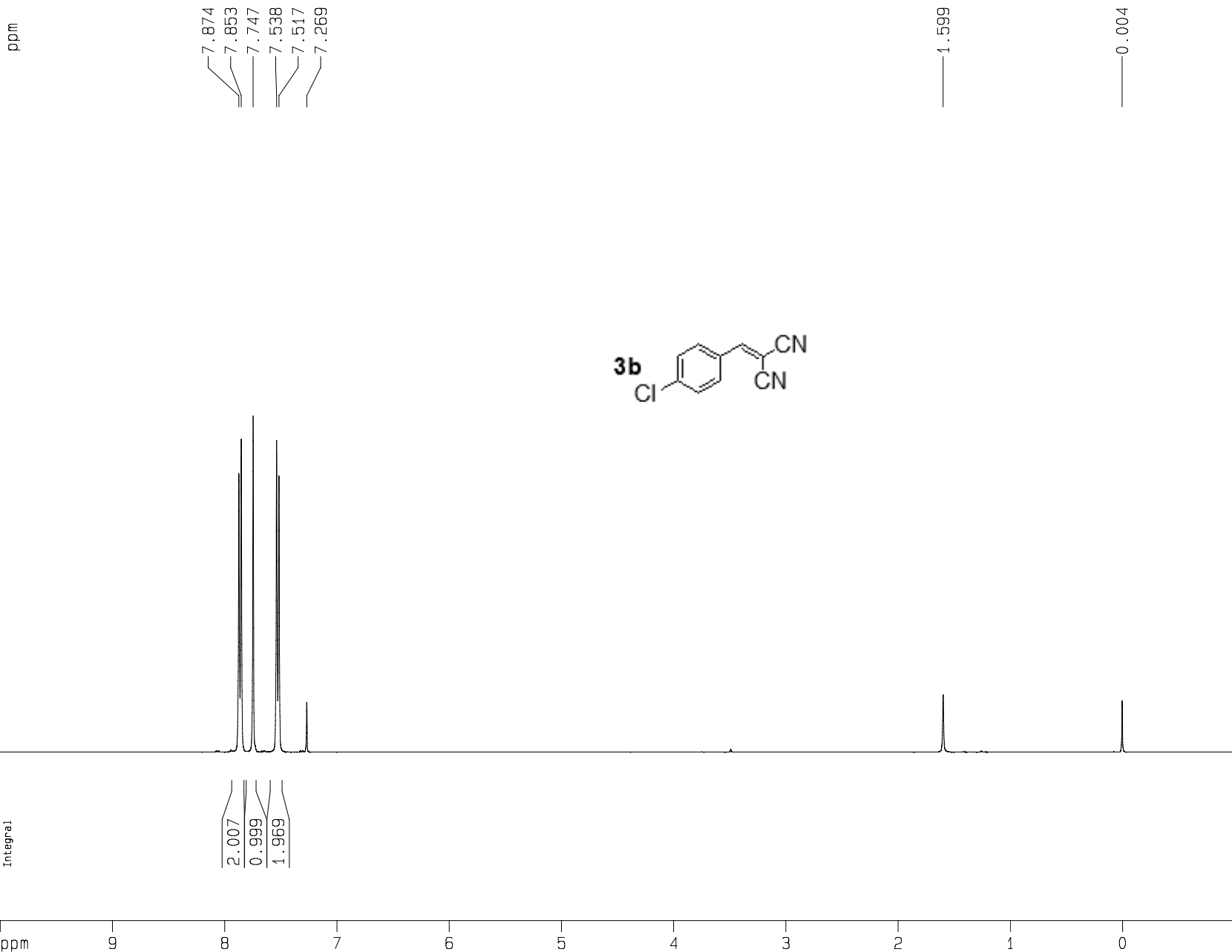
CPDPRG2 waltz16  
NUC2 1H  
PCPD2 80.00 usec  
PL2 -4.00 dB  
PL12 15.00 dB  
PL13 18.00 dB  
SF02 400.1316005 MHz

## F2 - Processing parameters

SI 32768  
SF 100.6127690 MHz  
WDW EM  
SSB 0  
LB 1.00 Hz  
GB 0  
PC 1.40

## 1D NMR plot parameters

CX 22.00 cm  
CY 8.00 cm  
F1P 219.169 ppm  
F1 22051.21 Hz  
F2P -19.179 ppm  
F2 -1929.60 Hz  
PPMCM 10.83398 ppm/cm  
HZCM 1090.03699 Hz/cm



Current Data Parameters

NAME PG-4  
EXPNO 1  
PROCNO 1

F2 - Acquisition Parameters

Date\_ 20110616  
Time 12.23  
INSTRUM spect  
PROBHD 5 mm PABBO BB-  
PULPROG zg30  
TD 32768  
SOLVENT DMSO  
NS 16  
DS 0  
SWH 8278.146 Hz  
FIDRES 0.252629 Hz  
AQ 1.9792372 sec  
RG 256  
DW 60.400 usec  
DE 6.00 usec  
TE 673.2 K  
D1 1.00000000 sec  
TD0 1

===== CHANNEL f1 =====

NUC1 1H  
P1 9.40 usec  
PL1 -4.00 dB  
SF01 400.1324710 MHz

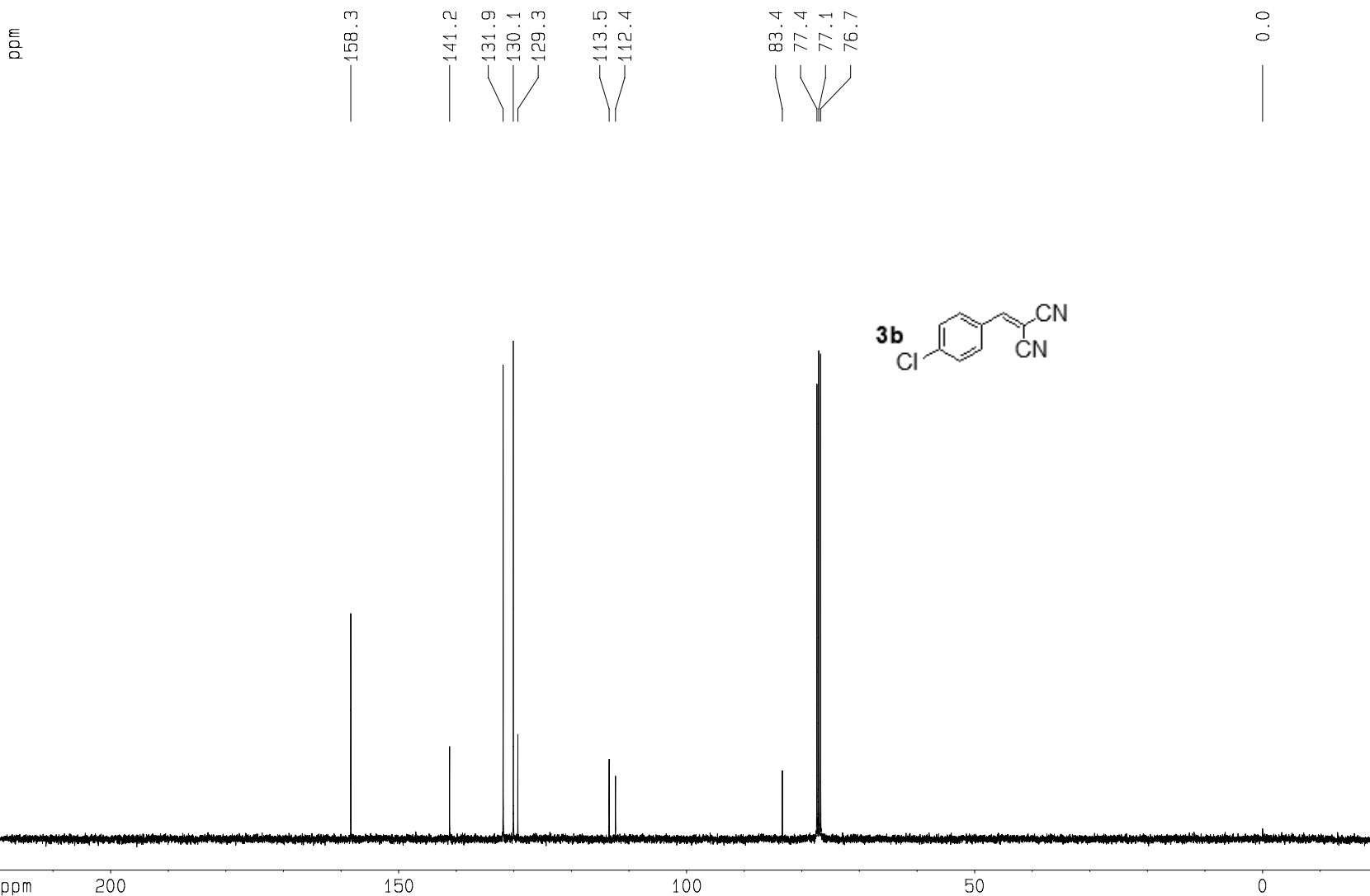
F2 - Processing parameters

SI 32768  
SF 400.1300077 MHz  
WDW EM  
SSB 0  
LB 0.30 Hz  
GB 0  
PC 1.00

1D NMR plot parameters

CX 22.00 cm  
CY 6.00 cm  
F1P 10.000 ppm  
F1 4001.30 Hz  
F2P -1.000 ppm  
F2 -400.13 Hz  
PPMCM 0.50000 ppm/cm  
HZCM 200.06500 Hz/cm

ppm



## Current Data Parameters

NAME PG-4  
EXPNO 2  
PROCNO 1

## F2 - Acquisition Parameters

Date\_ 20110616  
Time 17.37  
INSTRUM spect  
PROBHD 5 mm PABBO BB-  
PULPROG zgpg30  
TD 65536  
SOLVENT CDC13  
NS 256  
DS 4  
SWH 23980.814 Hz  
FIDRES 0.365918 Hz  
AQ 1.3664756 sec  
RG 574.7  
DW 20.850 usec  
DE 6.00 usec  
TE 673.2 K  
d11 0.03000000 sec  
D1 2.00000000 sec  
DELTA 1.89999998 sec  
TD0 1

## ===== CHANNEL f1 =====

NUC1 13C  
P1 7.00 usec  
PL1 -3.00 dB  
SF01 100.6228298 MHz

## ===== CHANNEL f2 =====

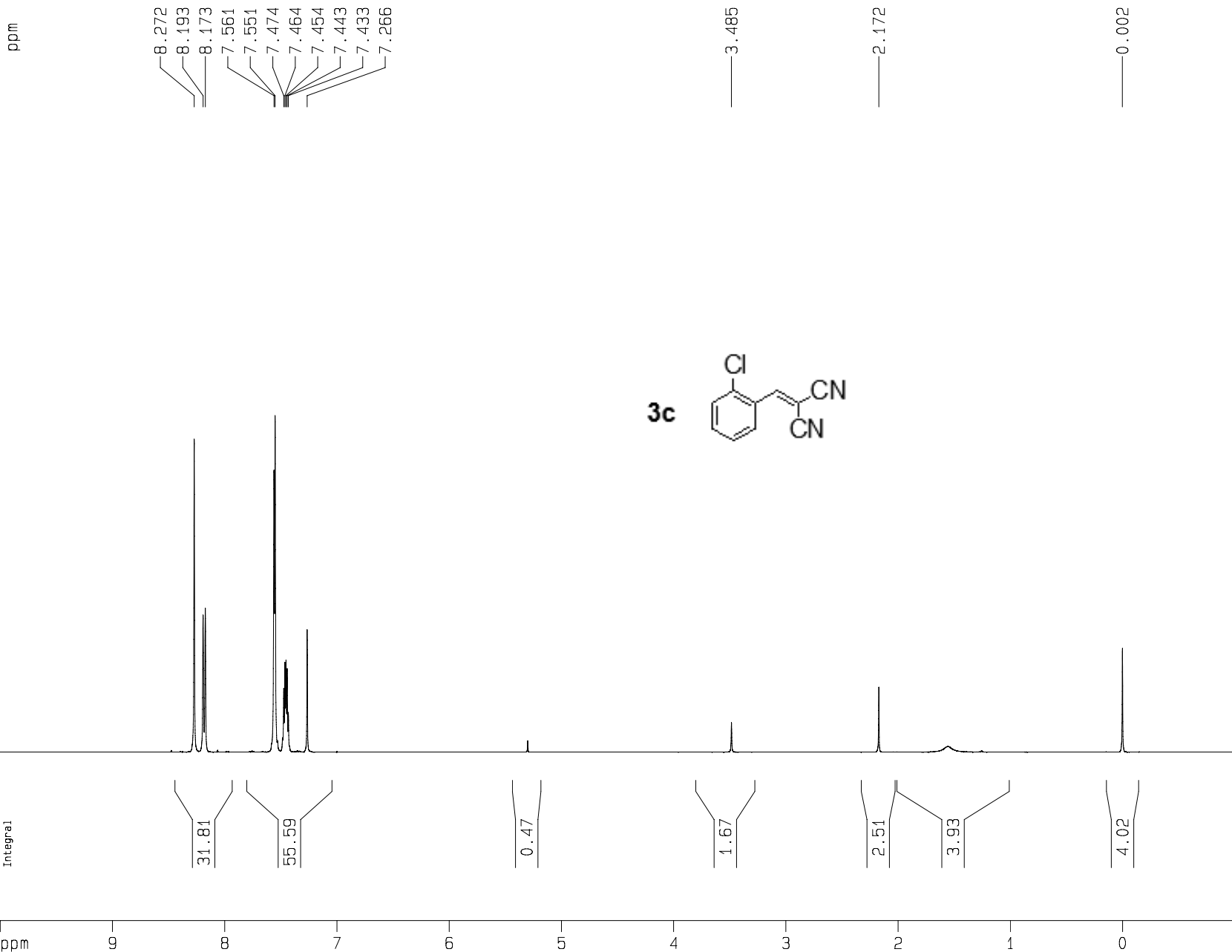
CPDPRG2 waltz16  
NUC2 1H  
PCPD2 80.00 usec  
PL2 -4.00 dB  
PL12 15.00 dB  
PL13 18.00 dB  
SF02 400.1316005 MHz

## F2 - Processing parameters

SI 32768  
SF 100.6127690 MHz  
WDW EM  
SSB 0  
LB 1.00 Hz  
GB 0  
PC 1.40

## 1D NMR plot parameters

CX 22.00 cm  
CY 8.00 cm  
F1P 219.169 ppm  
F1 22051.21 Hz  
F2P -19.179 ppm  
F2 -1929.60 Hz  
PPMCM 10.83398 ppm/cm  
HZCM 1090.03699 Hz/cm



# Current Data Parameters

NAME PG-6  
EXPNO 1  
PROCNO 1

## F2 - Acquisition Parameters

Date\_ 20110707  
Time 9.31  
INSTRUM spect  
PROBHD 5 mm PABBO BB-  
PULPROG zg30  
TD 32768  
SOLVENT CDC13  
NS 16  
DS 0  
SWH 8278.146 Hz  
FIDRES 0.252629 Hz  
AQ 1.9792372 sec  
RG 203.2  
DW 60.400 usec  
DE 6.00 usec  
TE 673.2 K  
D1 1.00000000 sec  
TD0 1

## ===== CHANNEL f1 =====

NUC1 1H  
P1 9.40 usec  
PL1 -4.00 dB  
SF01 400.1324710 MHz

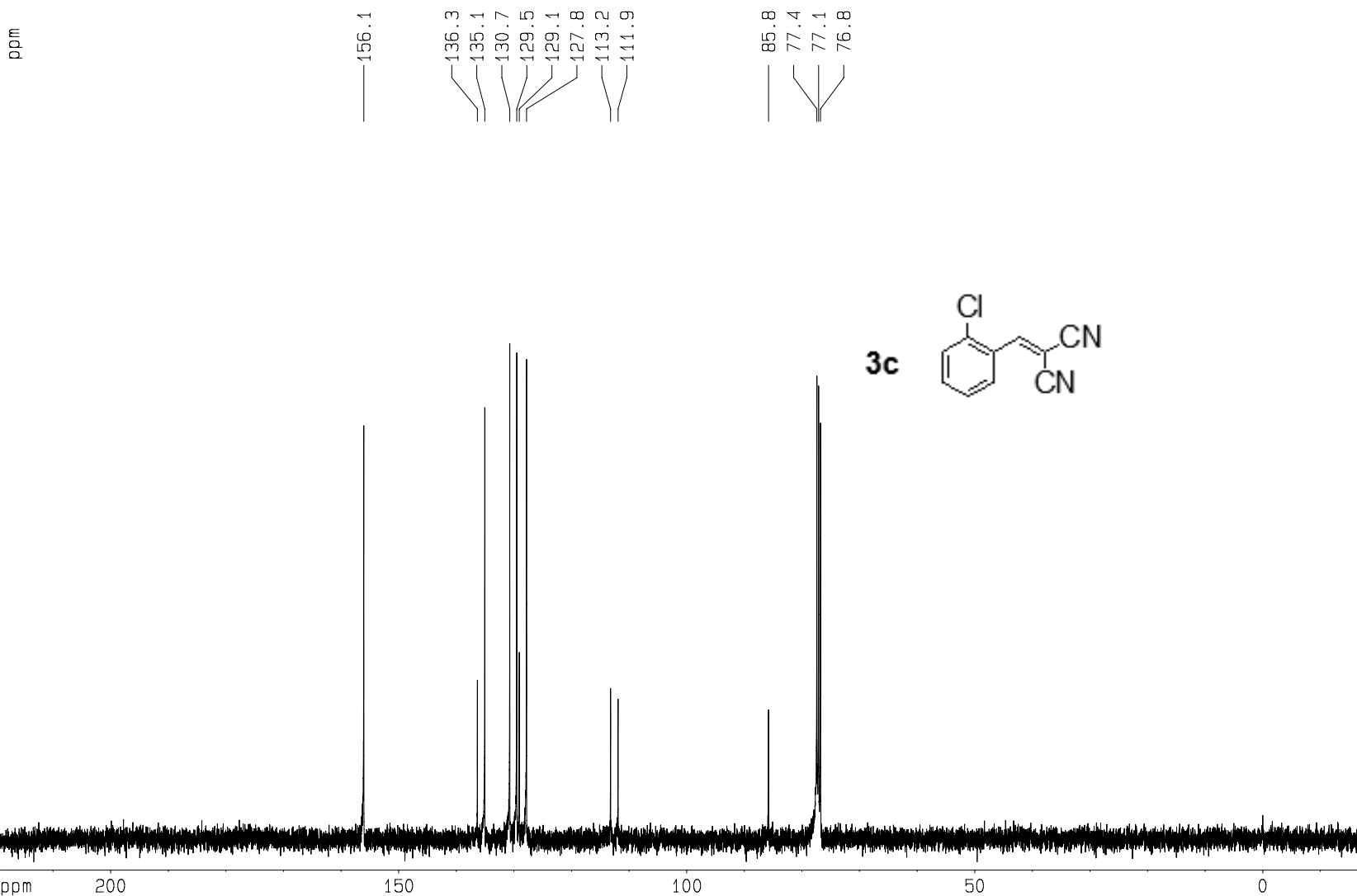
## F2 - Processing parameters

SI 32768  
SF 400.1300077 MHz  
WDW EM  
SSB 0  
LB 0.30 Hz  
GB 0  
PC 1.00

## 1D NMR plot parameters

CX 22.00 cm  
CY 6.00 cm  
F1P 10.000 ppm  
F1 4001.30 Hz  
F2P -1.000 ppm  
F2 -400.13 Hz  
PPMCM 0.50000 ppm/cm  
HZCM 200.06500 Hz/cm

ppm



## Current Data Parameters

NAME PG-6  
EXPNO 2  
PROCNO 1

## F2 - Acquisition Parameters

Date\_ 20110712  
Time 13.49  
INSTRUM spect  
PROBHD 5 mm PABBO BB-  
PULPROG zgpg30  
TD 65536  
SOLVENT CDC13  
NS 256  
DS 4  
SWH 23980.814 Hz  
FIDRES 0.365918 Hz  
AQ 1.3664756 sec  
RG 812.7  
DW 20.850 usec  
DE 6.00 usec  
TE 673.2 K  
d11 0.03000000 sec  
D1 2.00000000 sec  
DELTA 1.89999998 sec  
TD0 1

## ===== CHANNEL f1 =====

NUC1 13C  
P1 7.00 usec  
PL1 -3.00 dB  
SF01 100.6228298 MHz

## ===== CHANNEL f2 =====

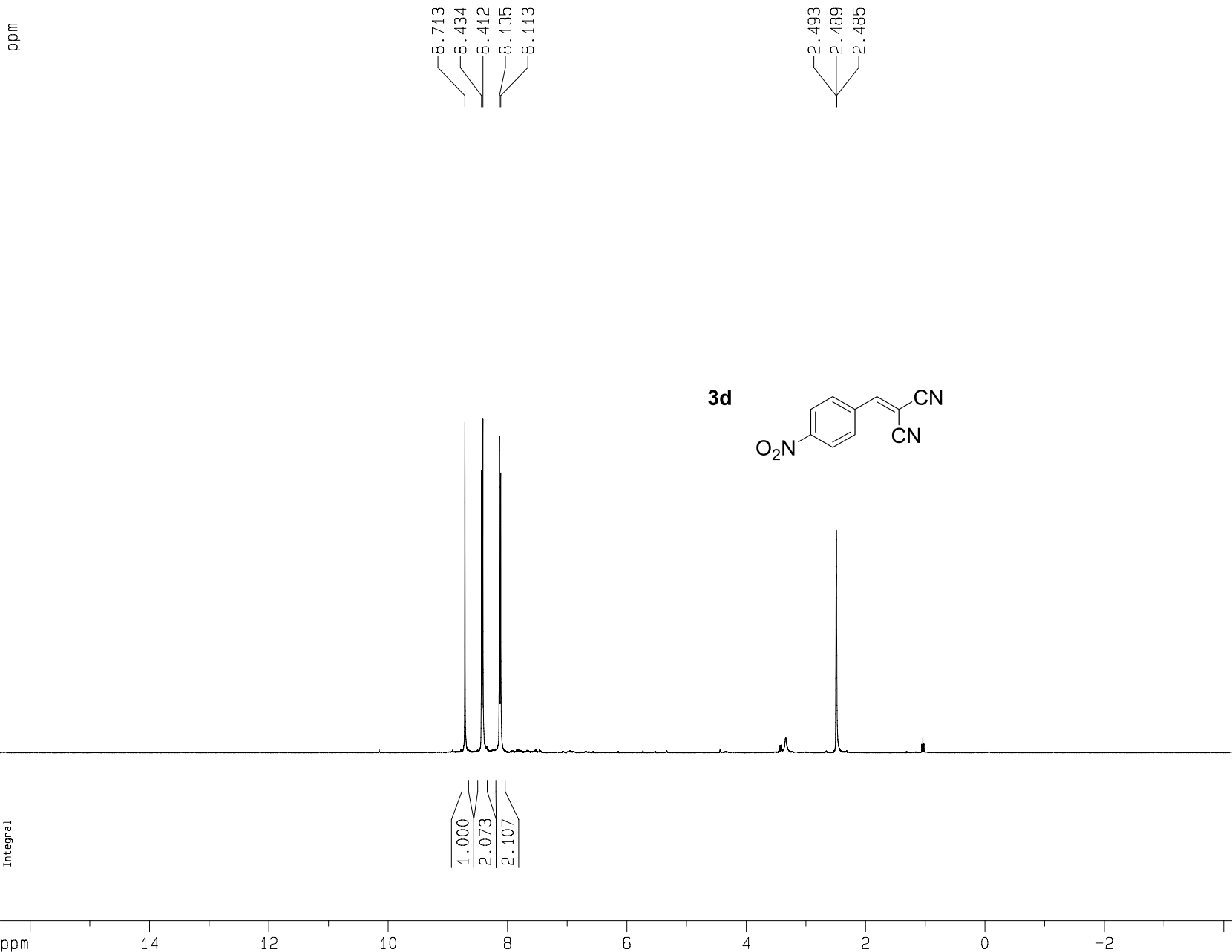
CPDPRG2 waltz16  
NUC2 1H  
PCPD2 80.00 usec  
PL2 -4.00 dB  
PL12 15.00 dB  
PL13 18.00 dB  
SF02 400.1316005 MHz

## F2 - Processing parameters

SI 32768  
SF 100.6127690 MHz  
WDW EM  
SSB 0  
LB 1.00 Hz  
GB 0  
PC 1.40

## 1D NMR plot parameters

CX 22.00 cm  
CY 8.00 cm  
F1P 219.169 ppm  
F1 22051.21 Hz  
F2P -19.179 ppm  
F2 -1929.60 Hz  
PPMCM 10.83398 ppm/cm  
HZCM 1090.03699 Hz/cm



# Current Data Parameters

NAME y121128-519  
EXPNO 1  
PROCNO 1

## F2 - Acquisition Parameters

Date\_ 20121128  
Time 15.05  
INSTRUM spect  
PROBHD 5 mm PABBO BB-  
PULPROG zg30  
TD 32768  
SOLVENT DMSO  
NS 16  
DS 0  
SWH 8278.146 Hz  
FIDRES 0.252629 Hz  
AQ 1.9792372 sec  
RG 256  
DW 60.400 usec  
DE 6.00 usec  
TE 673.2 K  
D1 1.00000000 sec  
TD0 1

## ===== CHANNEL f1 =====

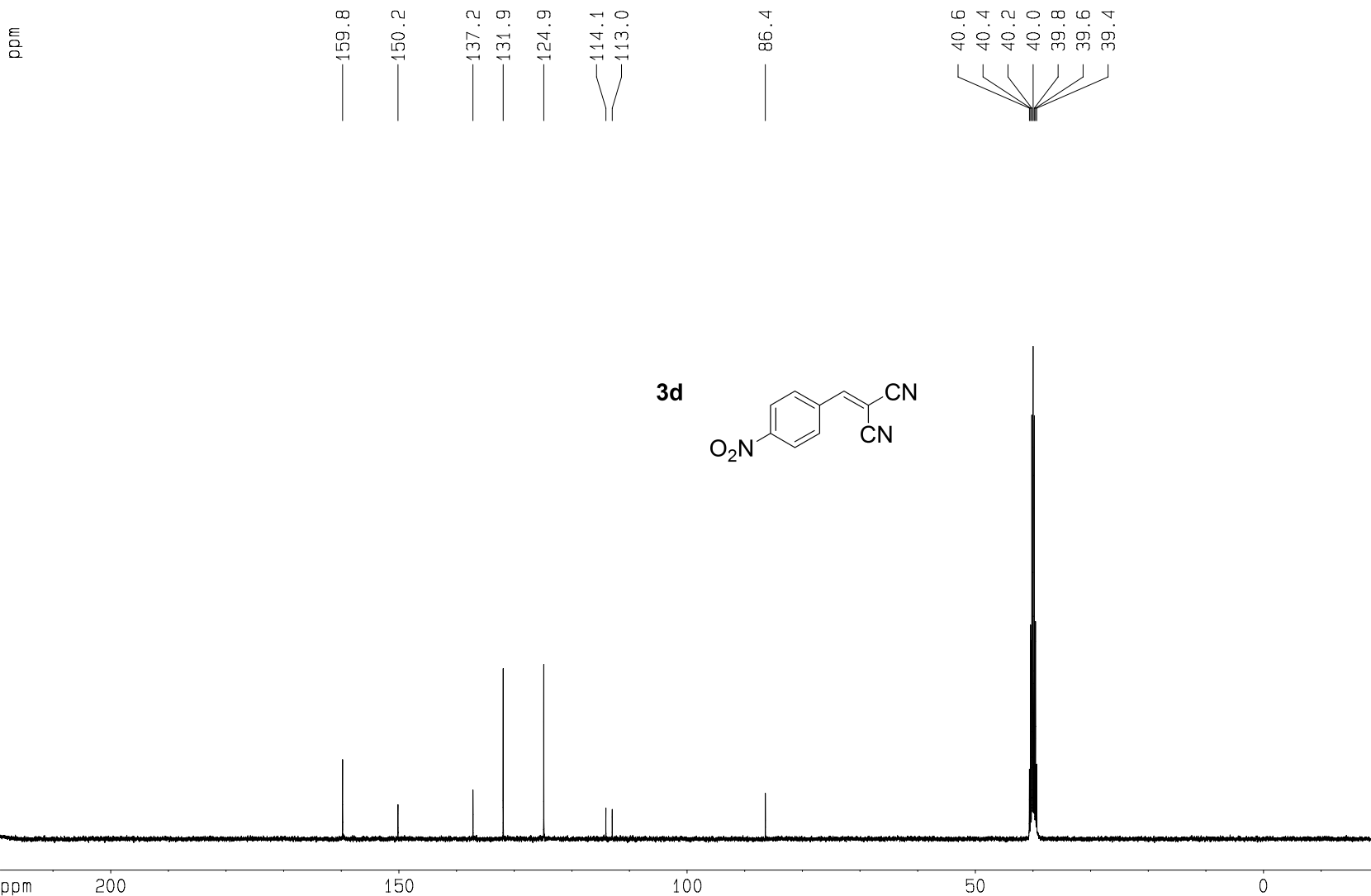
NUC1 1H  
P1 9.40 usec  
PL1 -4.00 dB  
SF01 400.1324710 MHz

## F2 - Processing parameters

SI 32768  
SF 400.1300077 MHz  
WDW EM  
SSB 0  
LB 0.30 Hz  
GB 0  
PC 1.00

## 1D NMR plot parameters

CX 22.00 cm  
CY 6.00 cm  
F1P 16.500 ppm  
F1 6602.33 Hz  
F2P -4.188 ppm  
F2 -1675.81 Hz  
PPMCM 0.94039 ppm/cm  
HZCM 376.27936 Hz/cm



Current Data Parameters  
NAME 13C y121128-519  
EXPNO 2  
PROCNO 1

F2 - Acquisition Parameters  
Date\_ 20121128  
Time 12.55  
INSTRUM spect  
PROBHD 5 mm PABBO BB-  
PULPROG zgpg30  
TD 65536  
SOLVENT DMSO  
NS 512  
DS 4  
SWH 23980.814 Hz  
FIDRES 0.365918 Hz  
AQ 1.3664756 sec  
RG 5160.6  
DW 20.850 usec  
DE 6.00 usec  
TE 673.2 K  
d11 0.03000000 sec  
D1 2.00000000 sec  
DELTA 1.89999998 sec  
TD0 1

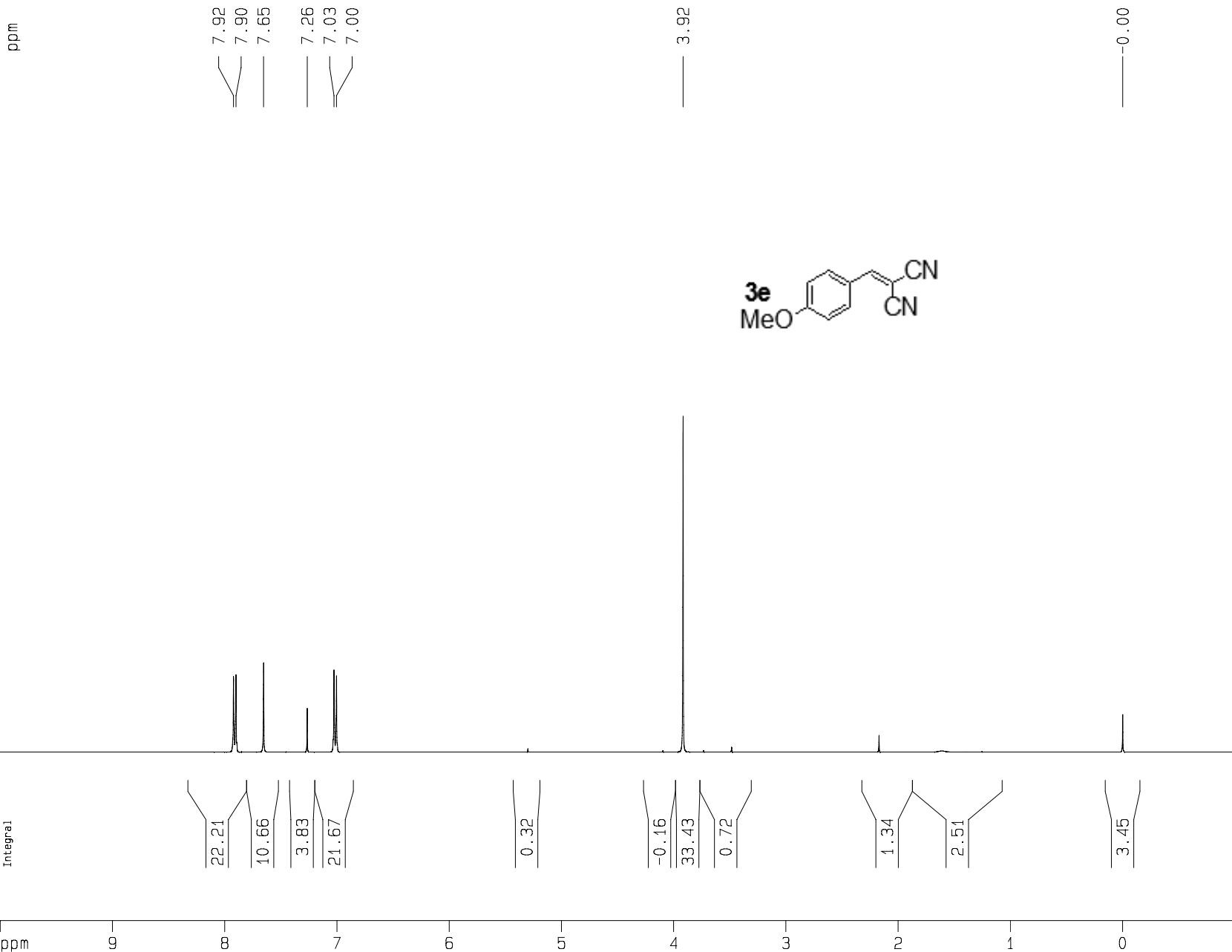
===== CHANNEL f1 =====  
NUC1 13C  
P1 7.00 usec  
PL1 -3.00 dB  
SF01 100.6228298 MHz

===== CHANNEL f2 =====  
CPDPRG2 waltz16  
NUC2 1H  
PCPD2 80.00 usec  
PL2 -4.00 dB  
PL12 15.00 dB  
PL13 18.00 dB  
SF02 400.1316005 MHz

F2 - Processing parameters  
SI 32768  
SF 100.6127690 MHz  
WDW EM  
SSB 0  
LB 1.00 Hz  
GB 0  
PC 1.40

1D NMR plot parameters  
CX 22.00 cm  
CY 8.00 cm  
F1P 219.169 ppm  
F1 22051.21 Hz  
F2P -19.179 ppm  
F2 -1929.60 Hz  
PPMCM 10.83398 ppm/cm  
HZCM 1090.03699 Hz/cm





# Current Data Parameters

NAME PG-8  
EXPNO 1  
PROCNO 1

## F2 - Acquisition Parameters

Date\_ 20110707  
Time 9.27  
INSTRUM spect  
PROBHD 5 mm PABBO BB-  
PULPROG zg30  
TD 32768  
SOLVENT CDC13  
NS 16  
DS 0  
SWH 8278.146 Hz  
FIDRES 0.252629 Hz  
AQ 1.9792372 sec  
RG 161.3  
DW 60.400 usec  
DE 6.00 usec  
TE 673.2 K  
D1 1.00000000 sec  
TD0 1

## ===== CHANNEL f1 =====

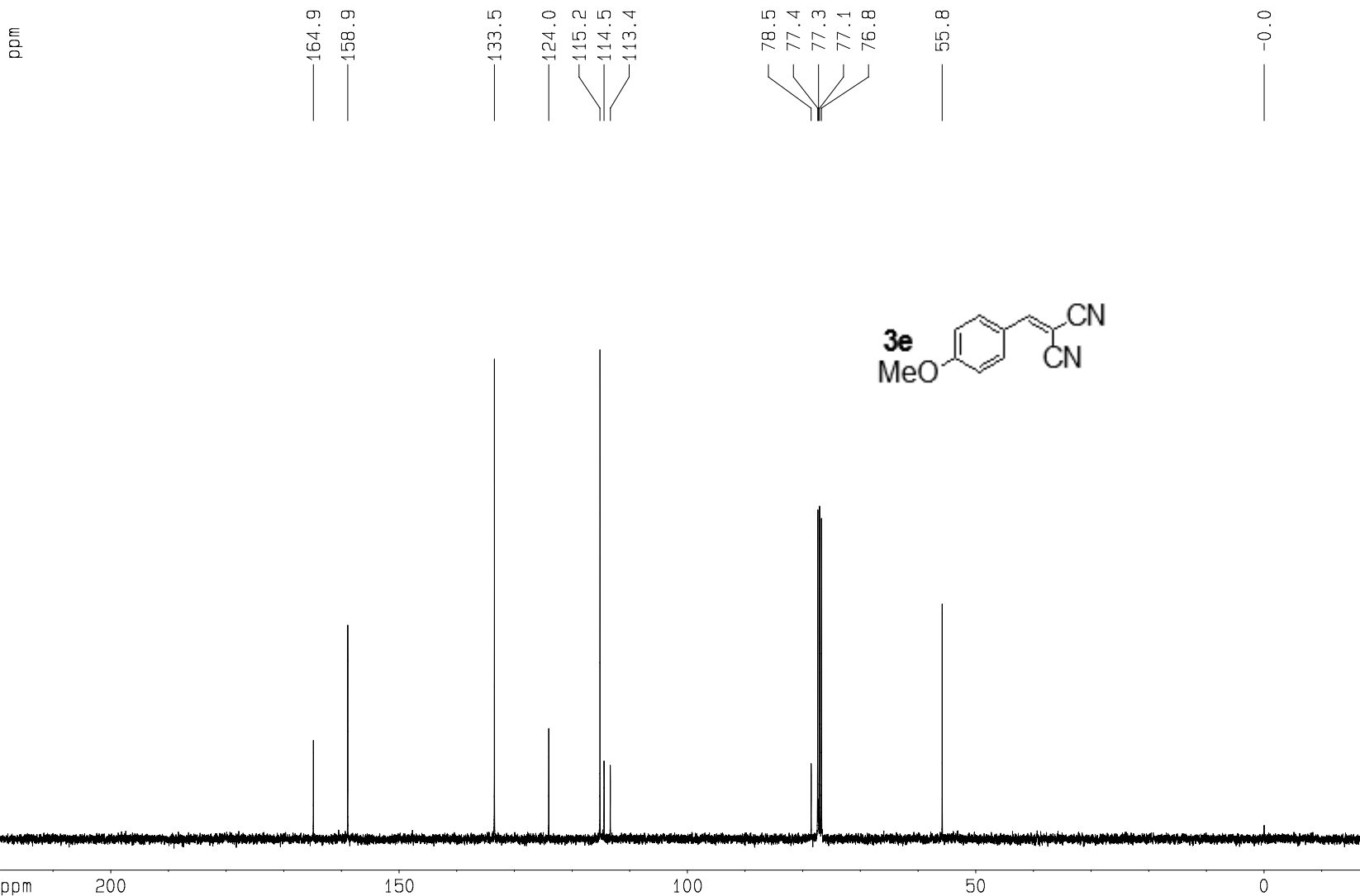
NUC1 1H  
P1 9.40 usec  
PL1 -4.00 dB  
SF01 400.1324710 MHz

## F2 - Processing parameters

SI 32768  
SF 400.1300077 MHz  
WDW EM  
SSB 0  
LB 0.30 Hz  
GB 0  
PC 1.00

## 1D NMR plot parameters

CX 22.00 cm  
CY 6.00 cm  
F1P 10.000 ppm  
F1 4001.30 Hz  
F2P -1.000 ppm  
F2 -400.13 Hz  
PPMCM 0.50000 ppm/cm  
HZCM 200.06500 Hz/cm



# Current Data Parameters

NAME PG-8  
EXPNO 2  
PROCNO 1

## F2 - Acquisition Parameters

Date\_ 20110711  
Time 10.57  
INSTRUM spect  
PROBHD 5 mm PABBO BB-  
PULPROG zgpg30  
TD 65536  
SOLVENT CDC13  
NS 256  
DS 4  
SWH 23980.814 Hz  
FIDRES 0.365918 Hz  
AQ 1.3664756 sec  
RG 812.7  
DW 20.850 usec  
DE 6.00 usec  
TE 673.2 K  
d11 0.03000000 sec  
D1 2.00000000 sec  
DELTA 1.89999998 sec  
TD0 1

## ===== CHANNEL f1 =====

NUC1 13C  
P1 7.00 usec  
PL1 -3.00 dB  
SF01 100.6228298 MHz

## ===== CHANNEL f2 =====

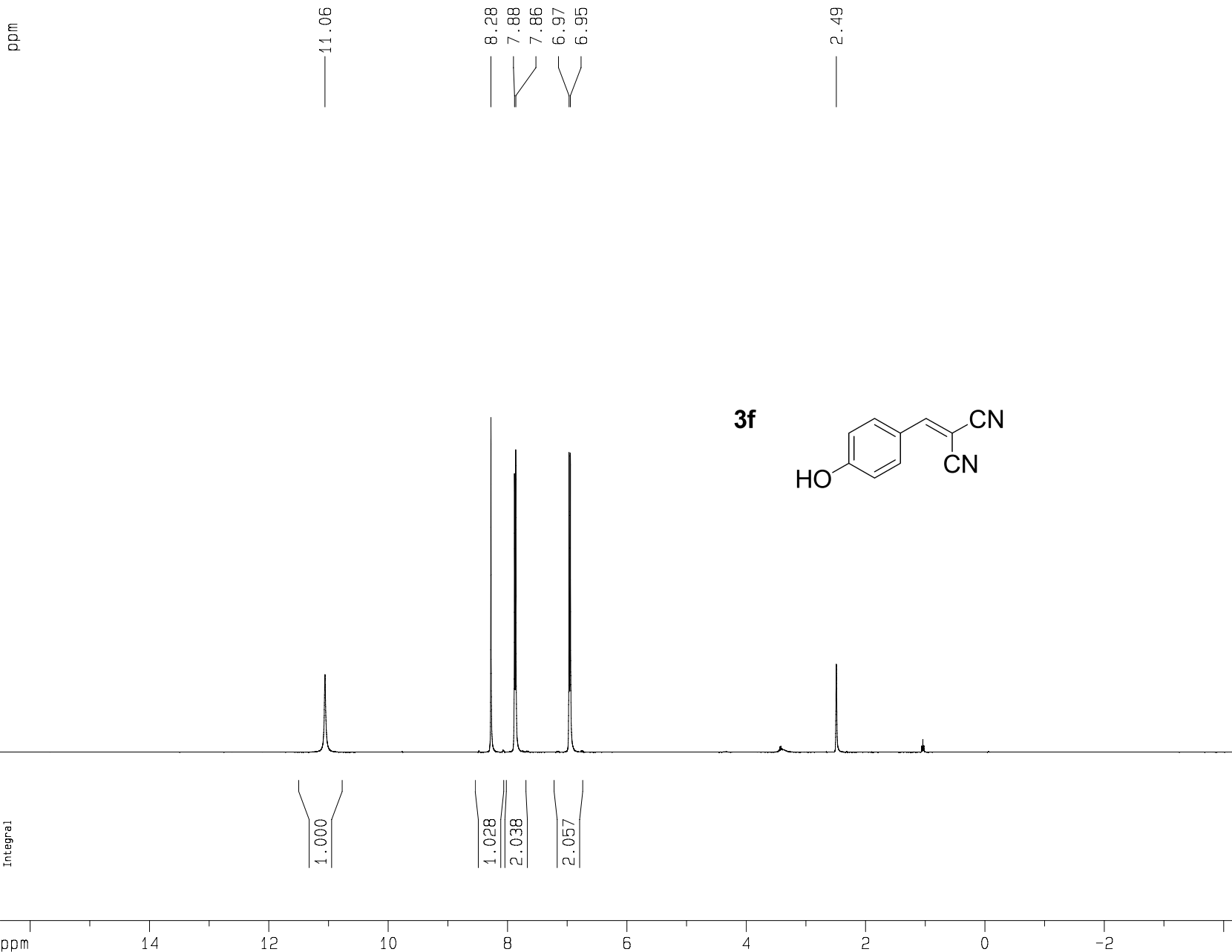
CPDPRG2 waltz16  
NUC2 1H  
PCPD2 80.00 usec  
PL2 -4.00 dB  
PL12 15.00 dB  
PL13 18.00 dB  
SF02 400.1316005 MHz

## F2 - Processing parameters

SI 32768  
SF 100.6127690 MHz  
WDW EM  
SSB 0  
LB 1.00 Hz  
GB 0  
PC 1.40

## 1D NMR plot parameters

CX 22.00 cm  
CY 8.00 cm  
F1P 219.169 ppm  
F1 22051.21 Hz  
F2P -19.179 ppm  
F2 -1929.60 Hz  
PPMCM 10.83398 ppm/cm  
HZCM 1090.03699 Hz/cm



## Current Data Parameters

NAME y-121128-521  
EXPNO 1  
PROCNO 1

## F2 - Acquisition Parameters

Date\_ 20121128  
Time 15.02  
INSTRUM spect  
PROBHD 5 mm PABBO BB-  
PULPROG zg30  
TD 32768  
SOLVENT DMSO  
NS 16  
DS 0  
SWH 8278.146 Hz  
FIDRES 0.252629 Hz  
AQ 1.9792372 sec  
RG 143.7  
DW 60.400 usec  
DE 6.00 usec  
TE 673.2 K  
D1 1.00000000 sec  
TD0 1

## ===== CHANNEL f1 =====

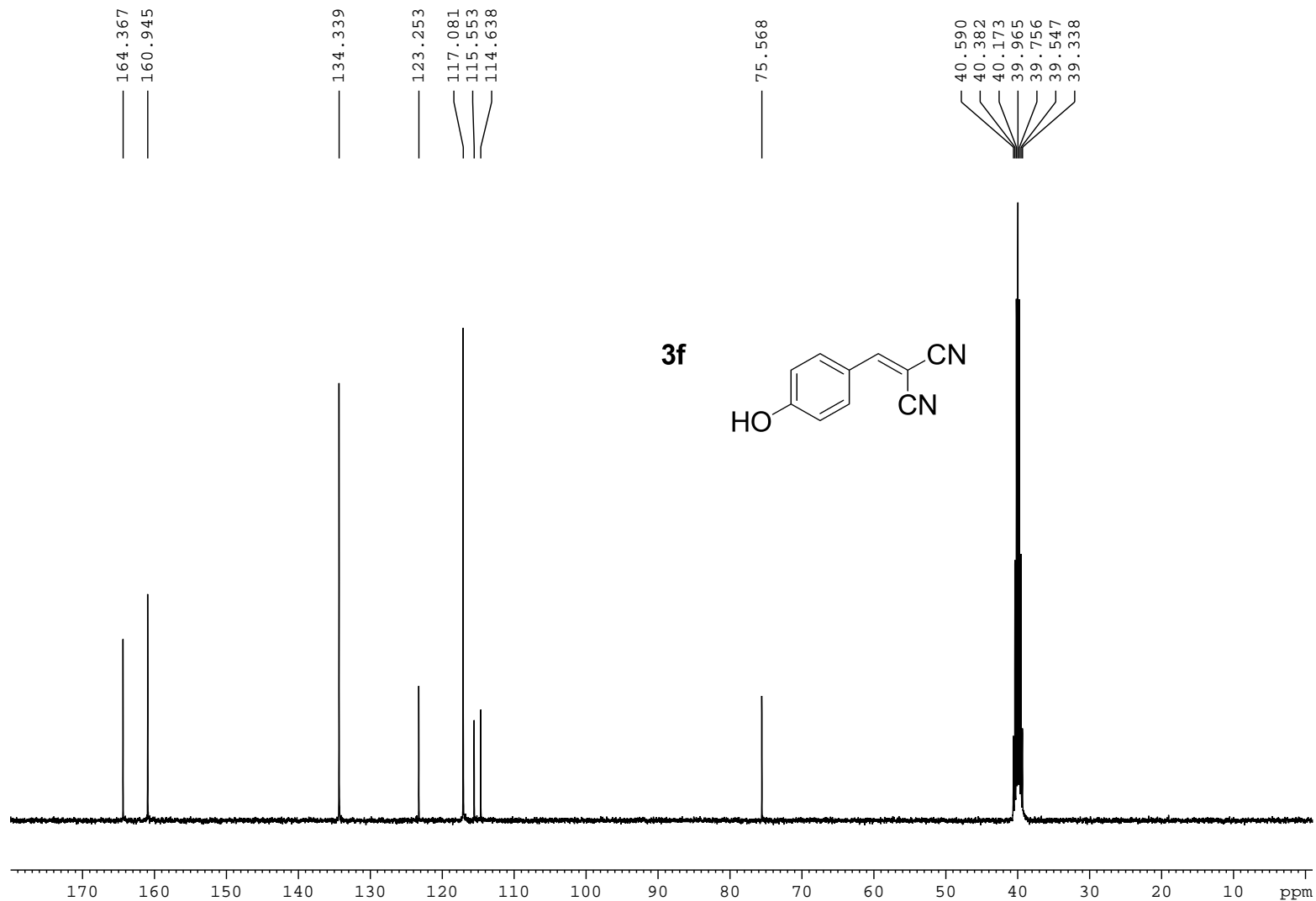
NUC1 1H  
P1 9.40 usec  
PL1 -4.00 dB  
SF01 400.1324710 MHz

## F2 - Processing parameters

SI 32768  
SF 400.1300077 MHz  
WDW EM  
SSB 0  
LB 0.30 Hz  
GB 0  
PC 1.00

## 1D NMR plot parameters

CX 22.00 cm  
CY 6.00 cm  
F1P 16.500 ppm  
F1 6602.33 Hz  
F2P -4.188 ppm  
F2 -1675.81 Hz  
PPMCM 0.94039 ppm/cm  
HZCM 376.27936 Hz/cm



Current Data Parameters  
 NAME 13C y121128-521  
 EXPNO 2  
 PROCNO 1

# F2 - Acquisition Parameters

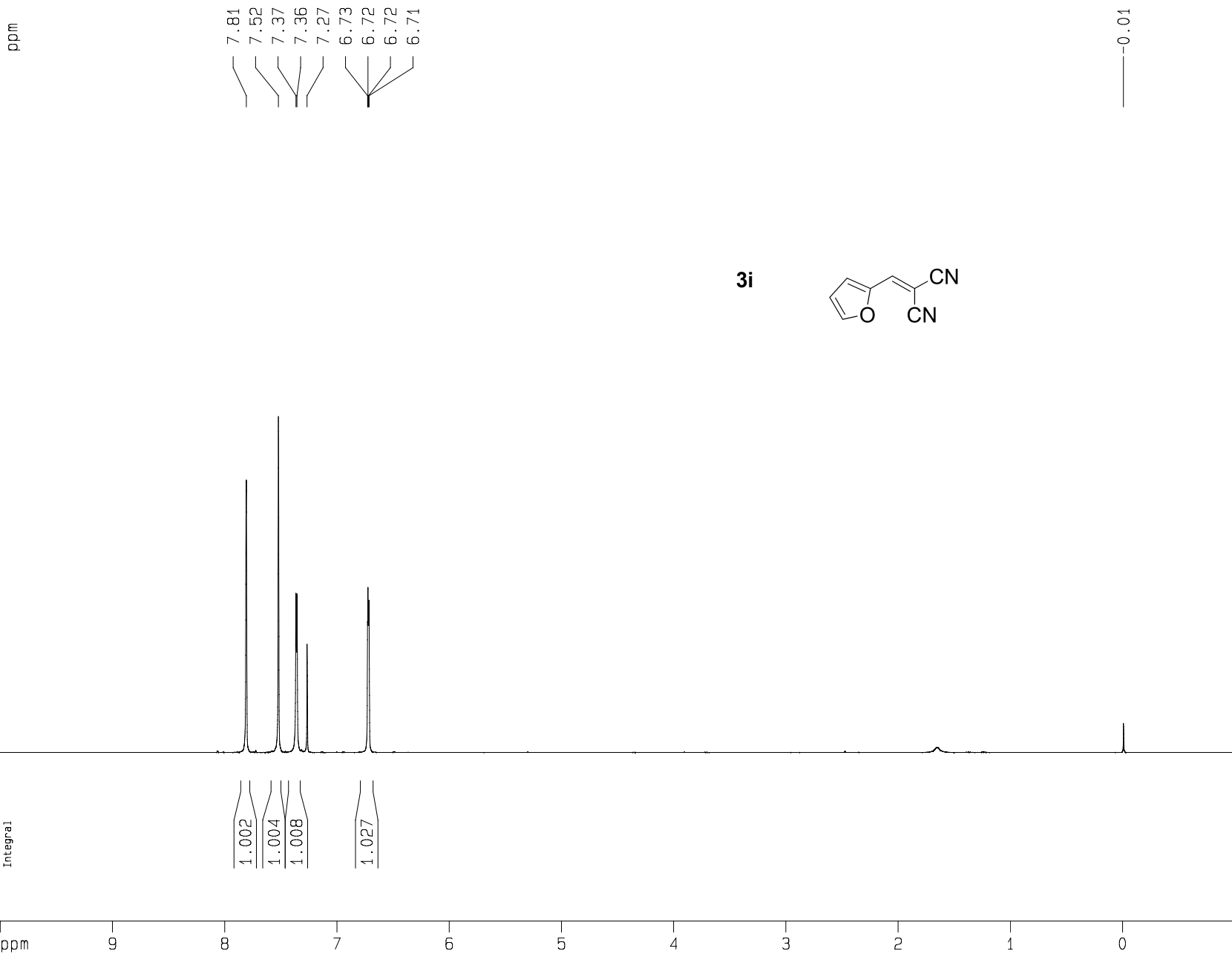
Date\_ 20121128  
 Time 12.20  
 INSTRUM spect  
 PROBHD 5 mm PABBO BB-  
 PULPROG zgpg30  
 TD 65536  
 SOLVENT DMSO  
 NS 512  
 DS 4  
 SWH 23980.814 Hz  
 FIDRES 0.365918 Hz  
 AQ 1.3664756 sec  
 RG 5160.6  
 DW 20.850 usec  
 DE 6.00 usec  
 TE 673.2 K  
 d11 0.03000000 sec  
 D1 2.00000000 sec  
 DELTA 1.89999998 sec  
 TD0 1

===== CHANNEL f1 =====  
 NUC1 13C  
 P1 7.00 usec  
 PL1 -3.00 dB  
 SFO1 100.6228298 MHz

===== CHANNEL f2 =====  
 CPDPRG2 waltz16  
 NUC2 1H  
 PCPD2 80.00 usec  
 PL2 -4.00 dB  
 PL12 15.00 dB  
 PL13 18.00 dB  
 SFO2 400.1316005 MHz

F2 - Processing parameters  
 SI 32768  
 SF 100.6127690 MHz  
 WDW EM  
 SSB 0  
 LB 1.00 Hz  
 GB 0  
 PC 1.40

1D NMR plot parameters  
 CX 22.00 cm  
 CY 8.00 cm  
 F1P 219.169 ppm  
 F1 22051.21 Hz  
 F2P -19.179 ppm  
 F2 -1929.60 Hz  
 PPMCM 10.83398 ppm/cm  
 HZCM 1090.03699 Hz/cm



# Current Data Parameters

NAME PG-18  
EXPNO 1  
PROCNO 1

## F2 - Acquisition Parameters

Date\_ 20111129  
Time 16.05  
INSTRUM spect  
PROBHD 5 mm PABBO BB-  
PULPROG zg30  
TD 32768  
SOLVENT CDC13  
NS 16  
DS 0  
SWH 8278.146 Hz  
FIDRES 0.252629 Hz  
AQ 1.9792372 sec  
RG 161.3  
DW 60.400 usec  
DE 6.00 usec  
TE 673.2 K  
D1 1.00000000 sec  
TD0 1

## ===== CHANNEL f1 =====

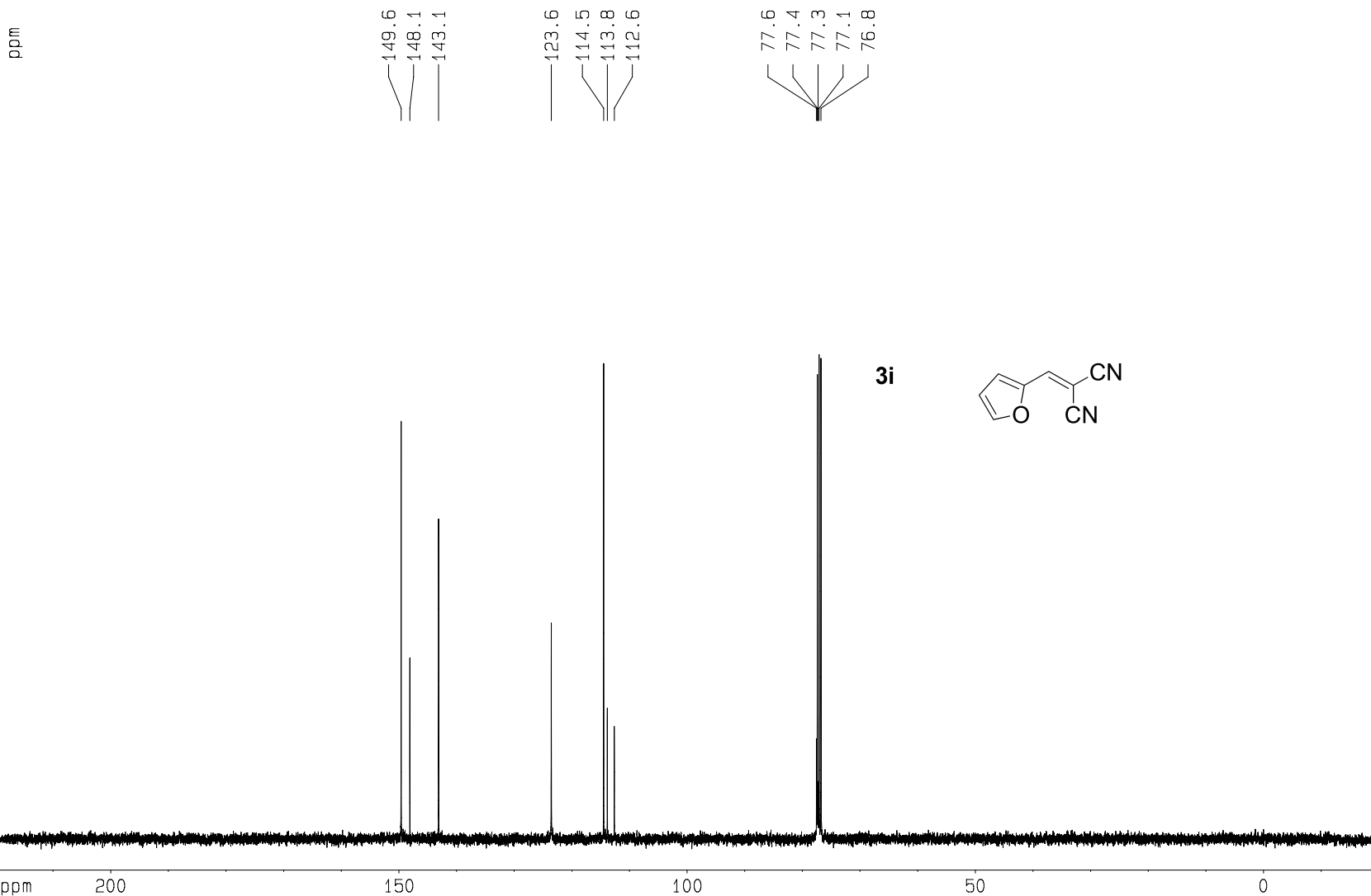
NUC1 1H  
P1 9.40 usec  
PL1 -4.00 dB  
SF01 400.1324710 MHz

## F2 - Processing parameters

SI 32768  
SF 400.1300077 MHz  
WDW EM  
SSB 0  
LB 0.30 Hz  
GB 0  
PC 1.00

## 1D NMR plot parameters

CX 22.00 cm  
CY 6.00 cm  
F1P 10.000 ppm  
F1 4001.30 Hz  
F2P -1.000 ppm  
F2 -400.13 Hz  
PPMCM 0.50000 ppm/cm  
HZCM 200.06500 Hz/cm



Current Data Parameters  
NAME 13C PG-18  
EXPNO 2  
PROCNO 1

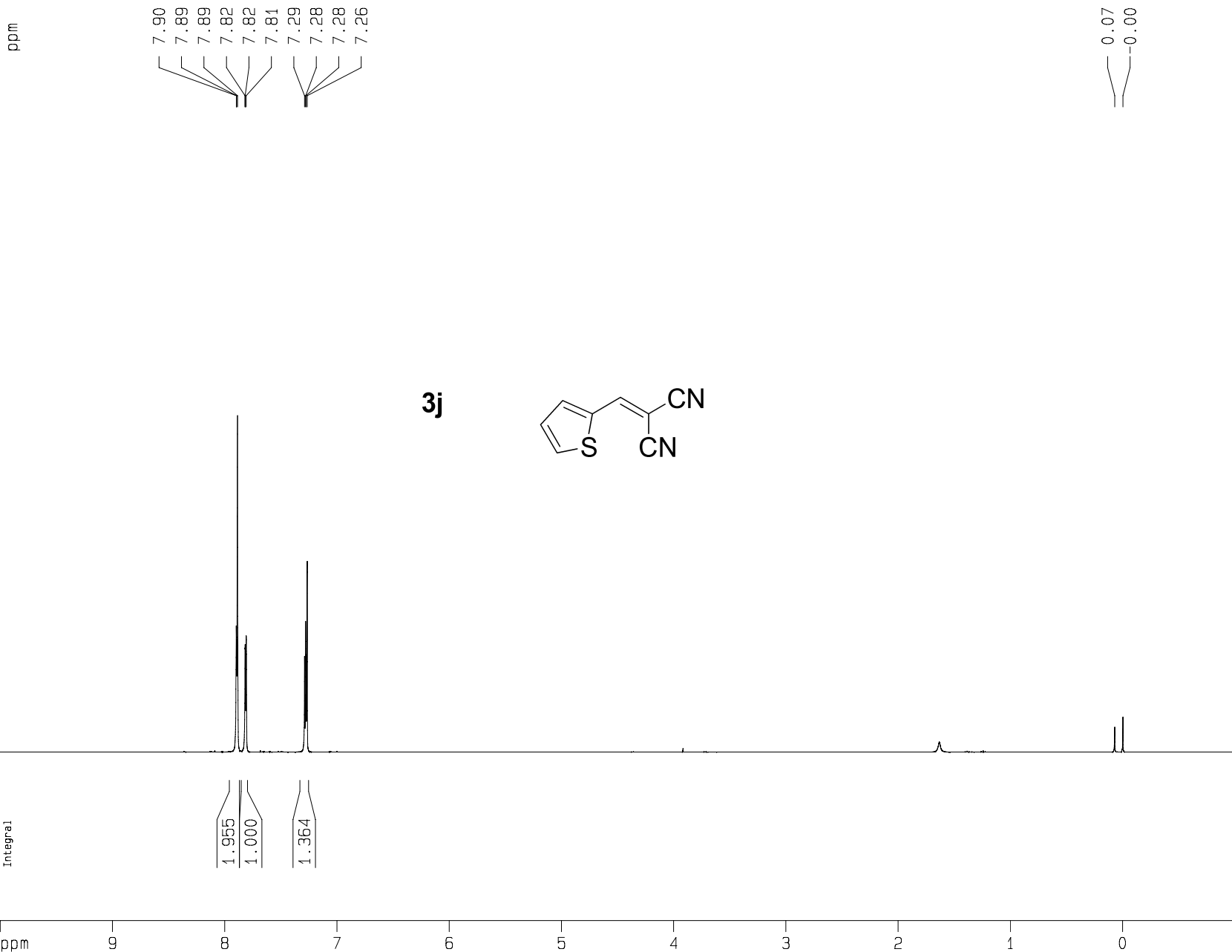
F2 - Acquisition Parameters  
Date\_ 20111129  
Time 15.52  
INSTRUM spect  
PROBHD 5 mm PABBO BB-  
PULPROG zgpg30  
TD 65536  
SOLVENT CDC13  
NS 256  
DS 4  
SWH 23980.814 Hz  
FIDRES 0.365918 Hz  
AQ 1.3664756 sec  
RG 1290.2  
DW 20.850 usec  
DE 6.00 usec  
TE 673.2 K  
d11 0.03000000 sec  
D1 2.00000000 sec  
DELTA 1.89999998 sec  
TD0 1

===== CHANNEL f1 =====  
NUC1 13C  
P1 7.00 usec  
PL1 -3.00 dB  
SF01 100.6228298 MHz

===== CHANNEL f2 =====  
CPDPRG2 waltz16  
NUC2 1H  
PCPD2 80.00 usec  
PL2 -4.00 dB  
PL12 15.00 dB  
PL13 18.00 dB  
SF02 400.1316005 MHz

F2 - Processing parameters  
SI 32768  
SF 100.6127690 MHz  
WDW EM  
SSB 0  
LB 1.00 Hz  
GB 0  
PC 1.40

1D NMR plot parameters  
CX 22.00 cm  
CY 8.00 cm  
F1P 219.169 ppm  
F1 22051.21 Hz  
F2P -19.179 ppm  
F2 -1929.60 Hz  
PPMCM 10.83398 ppm/cm  
HZCM 1090.03699 Hz/cm



## Current Data Parameters

NAME PG-20  
EXPNO 1  
PROCNO 1

## F2 - Acquisition Parameters

Date\_ 20111130  
Time 15.07  
INSTRUM spect  
PROBHD 5 mm PABBO BB-  
PULPROG zg30  
TD 32768  
SOLVENT CDC13  
NS 16  
DS 0  
SWH 8278.146 Hz  
FIDRES 0.252629 Hz  
AQ 1.9792372 sec  
RG 228.1  
DW 60.400 usec  
DE 6.00 usec  
TE 673.2 K  
D1 1.00000000 sec  
TD0 1

## ===== CHANNEL f1 =====

NUC1 1H  
P1 9.40 usec  
PL1 -4.00 dB  
SF01 400.1324710 MHz

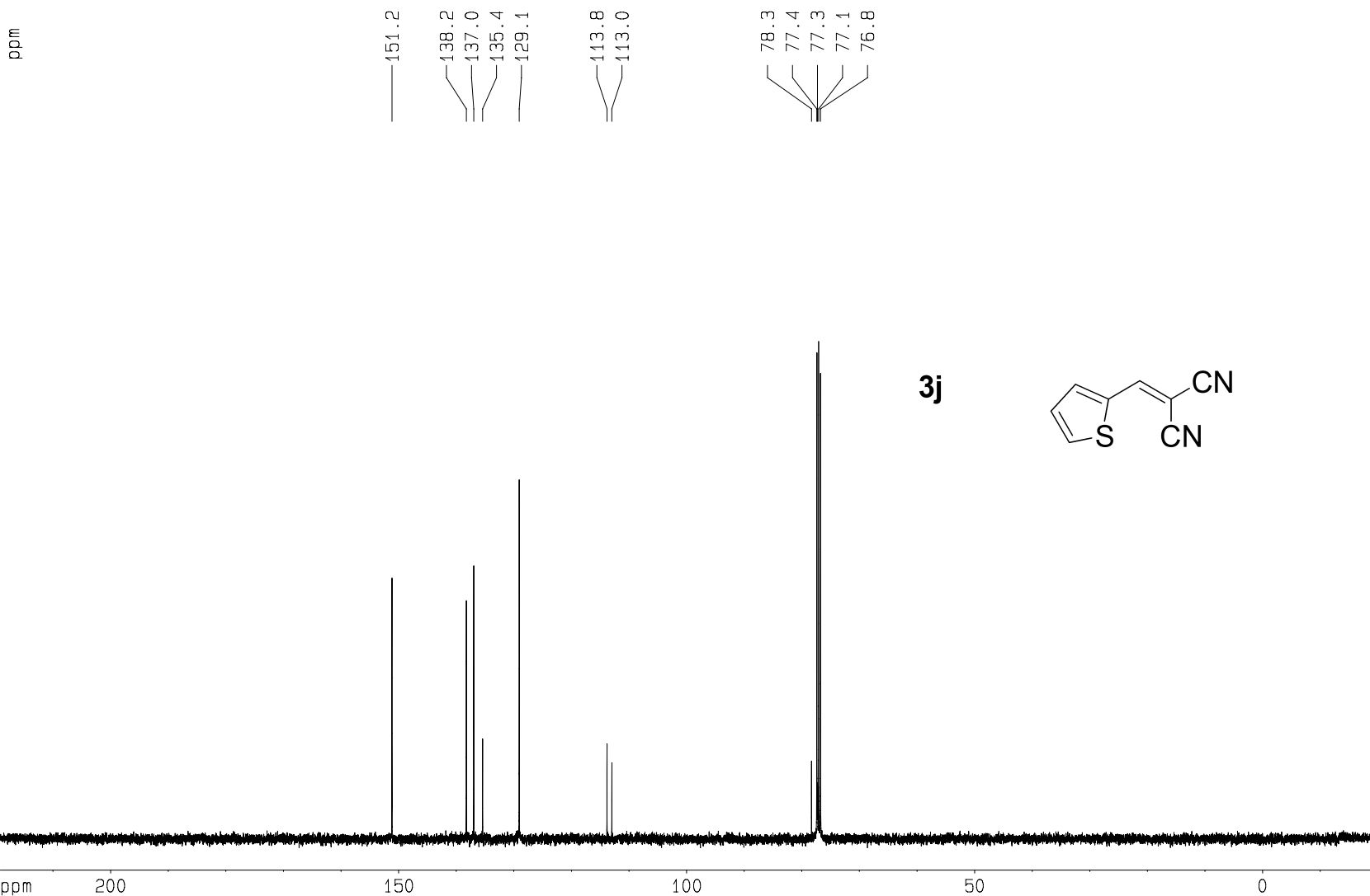
## F2 - Processing parameters

SI 32768  
SF 400.1300077 MHz  
WDW EM  
SSB 0  
LB 0.30 Hz  
GB 0  
PC 1.00

## 1D NMR plot parameters

CX 22.00 cm  
CY 6.00 cm  
F1P 10.000 ppm  
F1 4001.30 Hz  
F2P -1.000 ppm  
F2 -400.13 Hz  
PPMCM 0.50000 ppm/cm  
HZCM 200.06500 Hz/cm

ppm



## Current Data Parameters

NAME 13C PG-20  
EXPNO 2  
PROCNO 1

## F2 - Acquisition Parameters

Date\_ 20111129  
Time 15.07  
INSTRUM spect  
PROBHD 5 mm PABBO BB-  
PULPROG zgpg30  
TD 65536  
SOLVENT CDCl3  
NS 256  
DS 4  
SWH 23980.814 Hz  
FIDRES 0.365918 Hz  
AQ 1.3664756 sec  
RG 406.4  
DW 20.850 usec  
DE 6.00 usec  
TE 673.2 K  
d11 0.03000000 sec  
D1 2.00000000 sec  
DELTA 1.89999998 sec  
TD0 1

## ===== CHANNEL f1 =====

NUC1 13C  
P1 7.00 usec  
PL1 -3.00 dB  
SF01 100.6228298 MHz

## ===== CHANNEL f2 =====

CPDPRG2 waltz16  
NUC2 1H  
PCPD2 80.00 usec  
PL2 -4.00 dB  
PL12 15.00 dB  
PL13 18.00 dB  
SF02 400.1316005 MHz

## F2 - Processing parameters

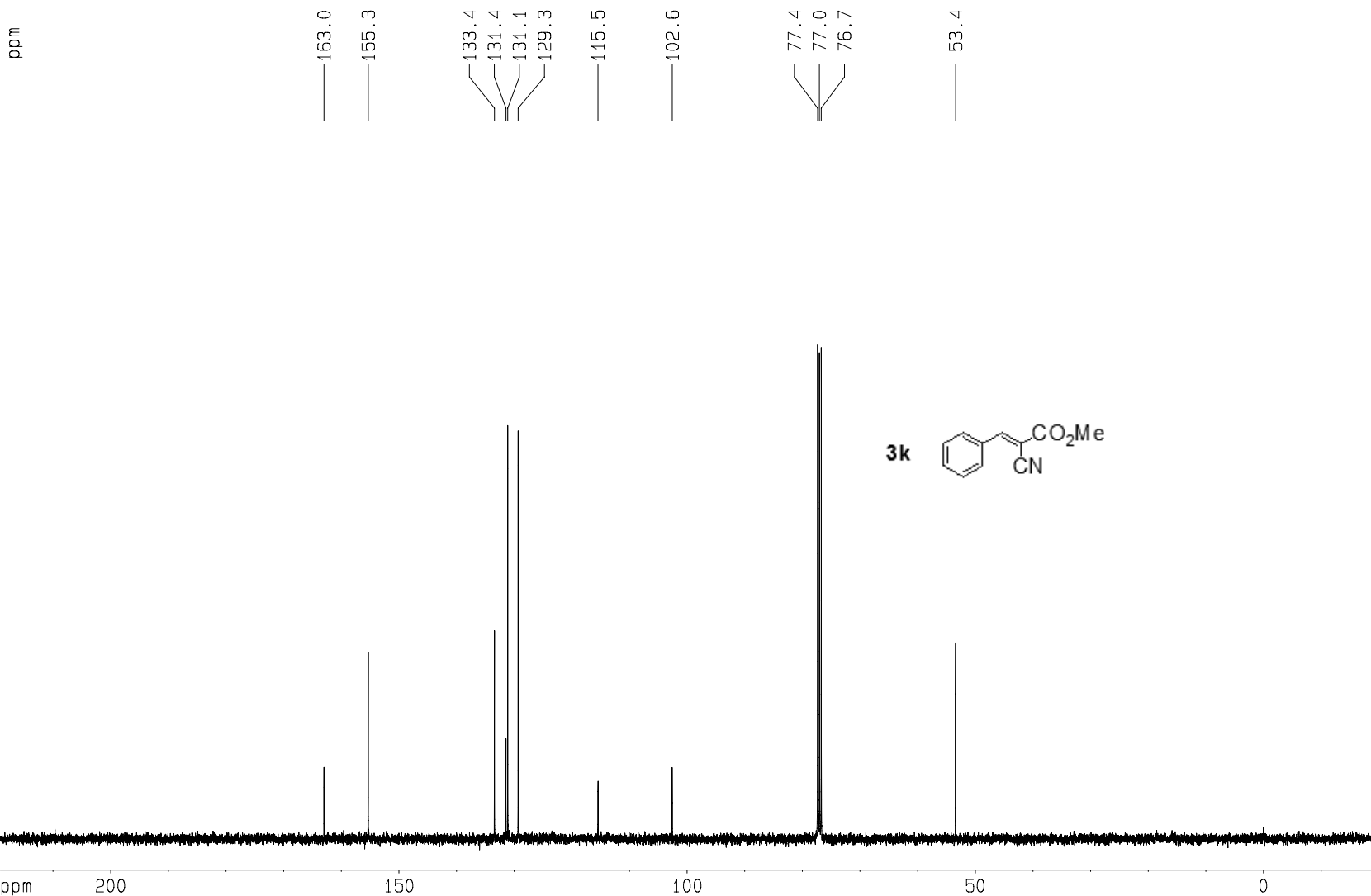
SI 32768  
SF 100.6127690 MHz  
WDW EM  
SSB 0  
LB 1.00 Hz  
GB 0  
PC 1.40

## 1D NMR plot parameters

CX 22.00 cm  
CY 8.00 cm  
F1P 219.169 ppm  
F1 22051.21 Hz  
F2P -19.179 ppm  
F2 -1929.60 Hz  
PPMCM 10.83398 ppm/cm  
HZCM 1090.03699 Hz/cm



ppm



## Current Data Parameters

NAME PG-1  
EXPNO 2  
PROCNO 1

## F2 - Acquisition Parameters

Date\_ 20110615  
Time 12.36  
INSTRUM spect  
PROBHD 5 mm PABBO BB-  
PULPROG zgpg30  
TD 65536  
SOLVENT CDC13  
NS 256  
DS 4  
SWH 23980.814 Hz  
FIDRES 0.365918 Hz  
AQ 1.3664756 sec  
RG 456.1  
DW 20.850 usec  
DE 6.00 usec  
TE 673.2 K  
d11 0.03000000 sec  
D1 2.00000000 sec  
DELTA 1.89999998 sec  
TD0 1

## ===== CHANNEL f1 =====

NUC1 13C  
P1 7.00 usec  
PL1 -3.00 dB  
SF01 100.6228298 MHz

## ===== CHANNEL f2 =====

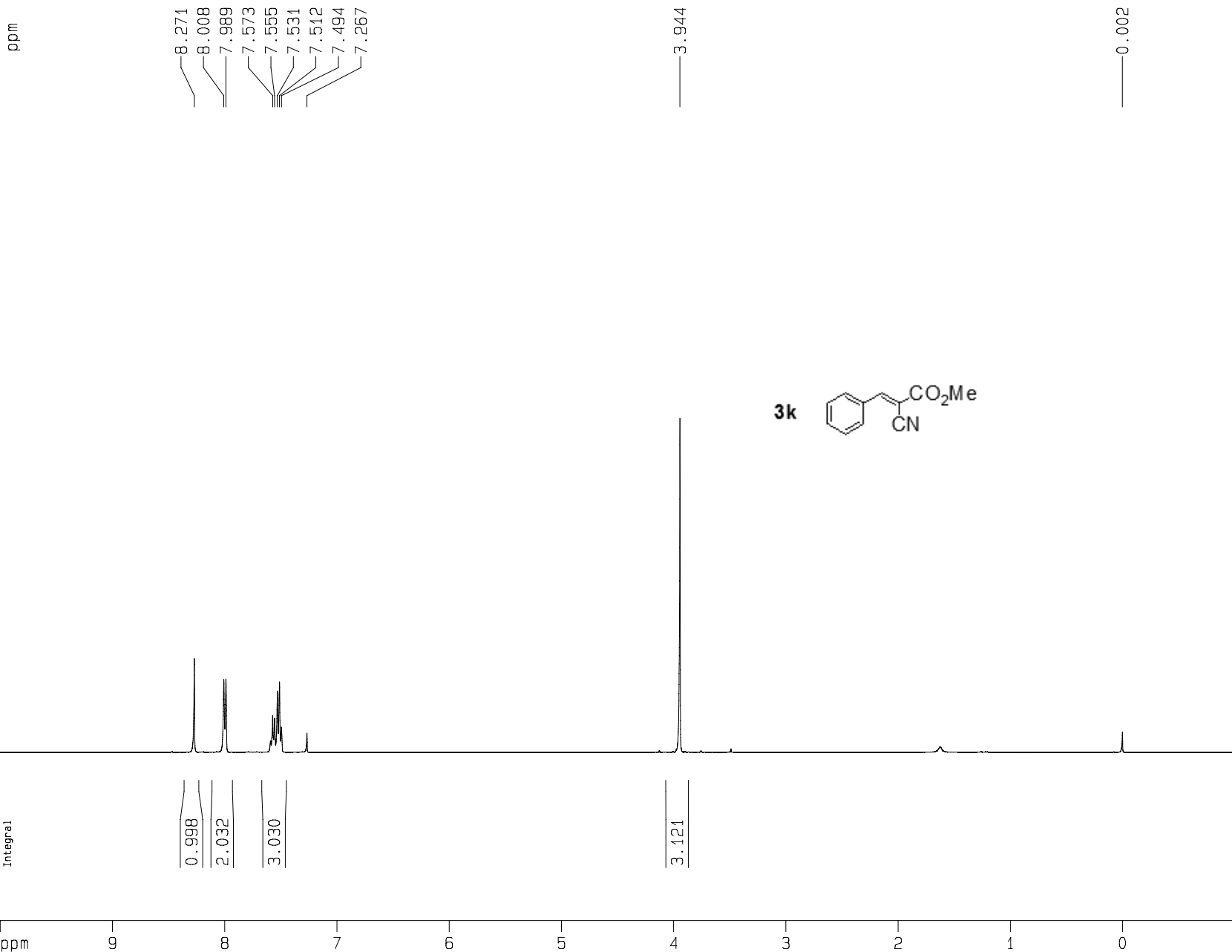
CPDPRG2 waltz16  
NUC2 1H  
PCPD2 80.00 usec  
PL2 -4.00 dB  
PL12 15.00 dB  
PL13 18.00 dB  
SF02 400.1316005 MHz

## F2 - Processing parameters

SI 32768  
SF 100.6127690 MHz  
WDW EM  
SSB 0  
LB 1.00 Hz  
GB 0  
PC 1.40

## 1D NMR plot parameters

CX 22.00 cm  
CY 8.00 cm  
F1P 219.169 ppm  
F1 22051.21 Hz  
F2P -19.179 ppm  
F2 -1929.60 Hz  
PPMCM 10.83398 ppm/cm  
HZCM 1090.03699 Hz/cm



# Current Data Parameters

NAME PG-1  
EXPNO 1  
PROCNO 1

## F2 - Acquisition Parameters

Date\_ 20110615  
Time 12.17  
INSTRUM spect  
PROBHD 5 mm PABBO BB-  
PULPROG zg30  
TD 32768  
SOLVENT CDC13  
NS 16  
DS 0  
SWH 8278.146 Hz  
FIDRES 0.252629 Hz  
AQ 1.9792372 sec  
RG 181  
DW 60.400 usec  
DE 6.00 usec  
TE 673.2 K  
D1 1.00000000 sec  
TD0 1

## ===== CHANNEL f1 =====

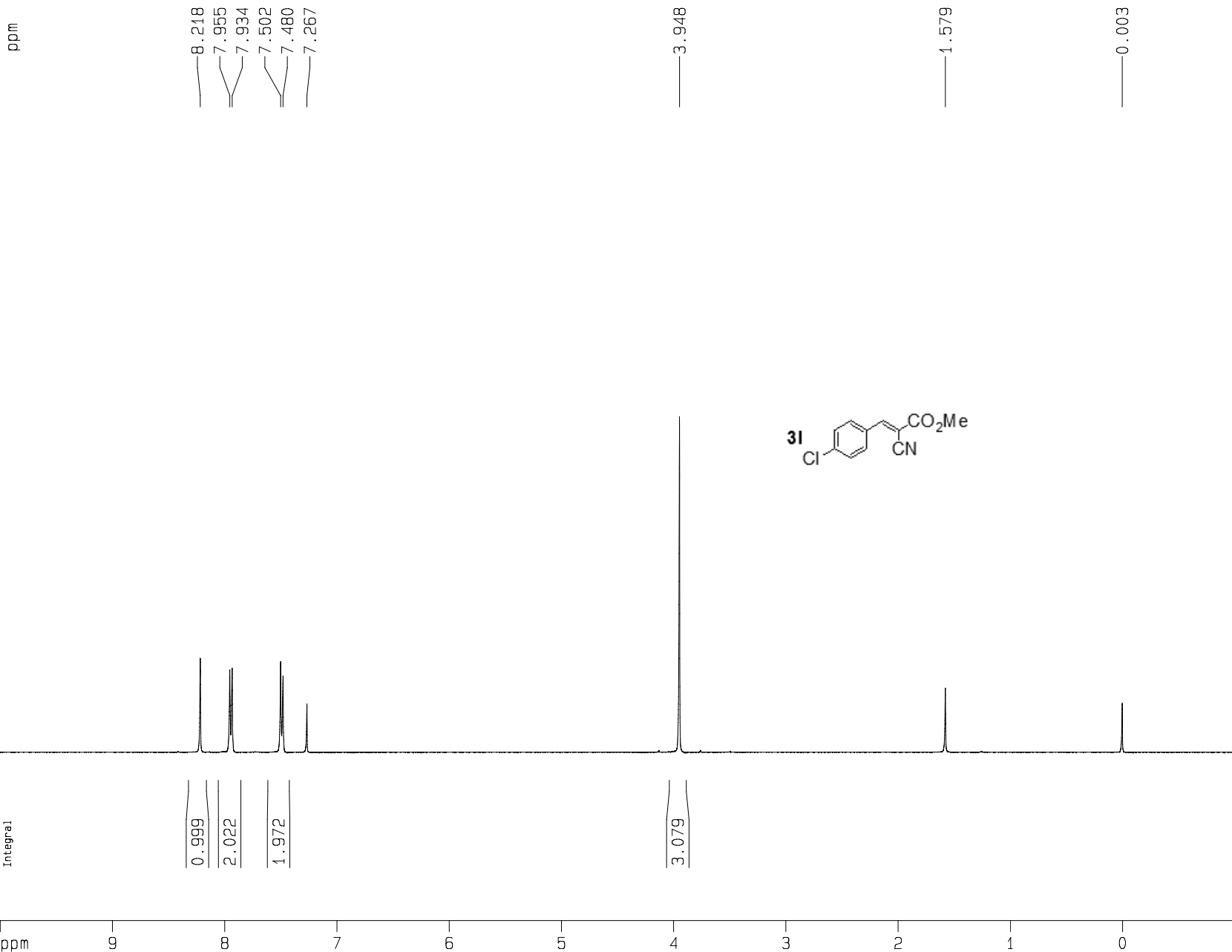
NUC1 1H  
P1 9.40 usec  
PL1 -4.00 dB  
SF01 400.1324710 MHz

## F2 - Processing parameters

SI 32768  
SF 400.1300077 MHz  
WDW EM  
SSB 0  
LB 0.30 Hz  
GB 0  
PC 1.00

## 1D NMR plot parameters

CX 22.00 cm  
CY 6.00 cm  
F1P 10.000 ppm  
F1 4001.30 Hz  
F2P -1.000 ppm  
F2 -400.13 Hz  
PPMCM 0.50000 ppm/cm  
HZCM 200.06500 Hz/cm



# Current Data Parameters

NAME PG-3  
EXPNO 1  
PROCNO 1

## F2 - Acquisition Parameters

Date\_ 20110616  
Time 12.20  
INSTRUM spect  
PROBHD 5 mm PABBO BB-  
PULPROG zg30  
TD 32768  
SOLVENT DMSO  
NS 16  
DS 0  
SWH 8278.146 Hz  
FIDRES 0.252629 Hz  
AQ 1.9792372 sec  
RG 362  
DW 60.400 usec  
DE 6.00 usec  
TE 673.2 K  
D1 1.00000000 sec  
TDO 1

## ===== CHANNEL f1 =====

NUC1 1H  
P1 9.40 usec  
PL1 -4.00 dB  
SF01 400.1324710 MHz

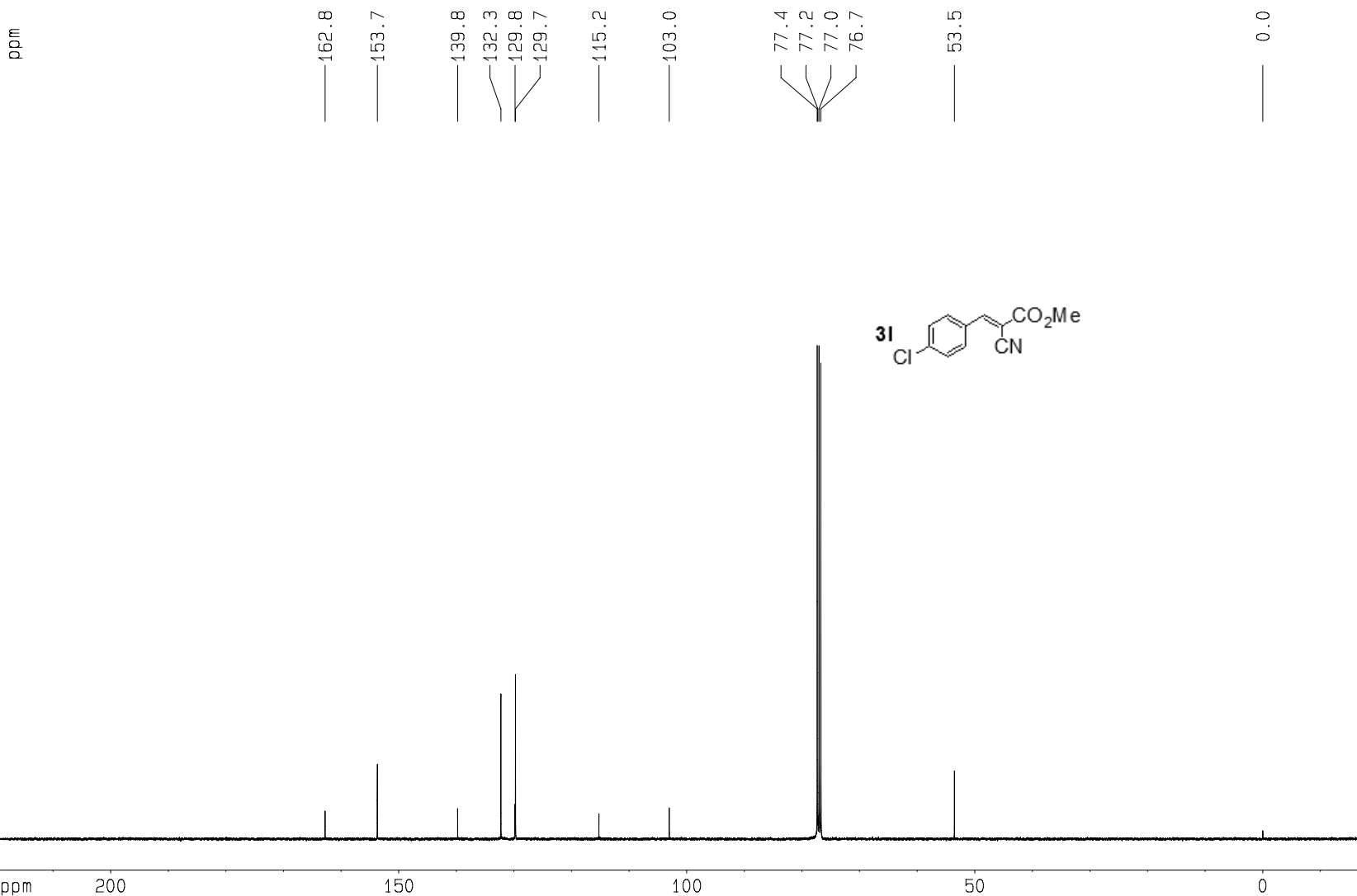
## F2 - Processing parameters

SI 32768  
SF 400.1300077 MHz  
WDW EM  
SSB 0  
LB 0.30 Hz  
GB 0  
PC 1.00

## 1D NMR plot parameters

CX 22.00 cm  
CY 6.00 cm  
F1P 10.000 ppm  
F1 4001.30 Hz  
F2P -1.000 ppm  
F2 -400.13 Hz  
PPMCM 0.50000 ppm/cm  
HZCM 200.06500 Hz/cm

ppm



## Current Data Parameters

NAME PG-3  
EXPNO 2  
PROCNO 1

## F2 - Acquisition Parameters

Date\_ 20110617  
Time 11.50  
INSTRUM spect  
PROBHD 5 mm PABBO BB-  
PULPROG zgpg30  
TD 65536  
SOLVENT CDC13  
NS 3072  
DS 4  
SWH 23980.814 Hz  
FIDRES 0.365918 Hz  
AQ 1.3664756 sec  
RG 912.3  
DW 20.850 usec  
DE 6.00 usec  
TE 673.2 K  
d11 0.03000000 sec  
D1 2.00000000 sec  
DELTA 1.89999998 sec  
TD0 3

## ===== CHANNEL f1 =====

NUC1 13C  
P1 7.00 usec  
PL1 -3.00 dB  
SF01 100.6228298 MHz

## ===== CHANNEL f2 =====

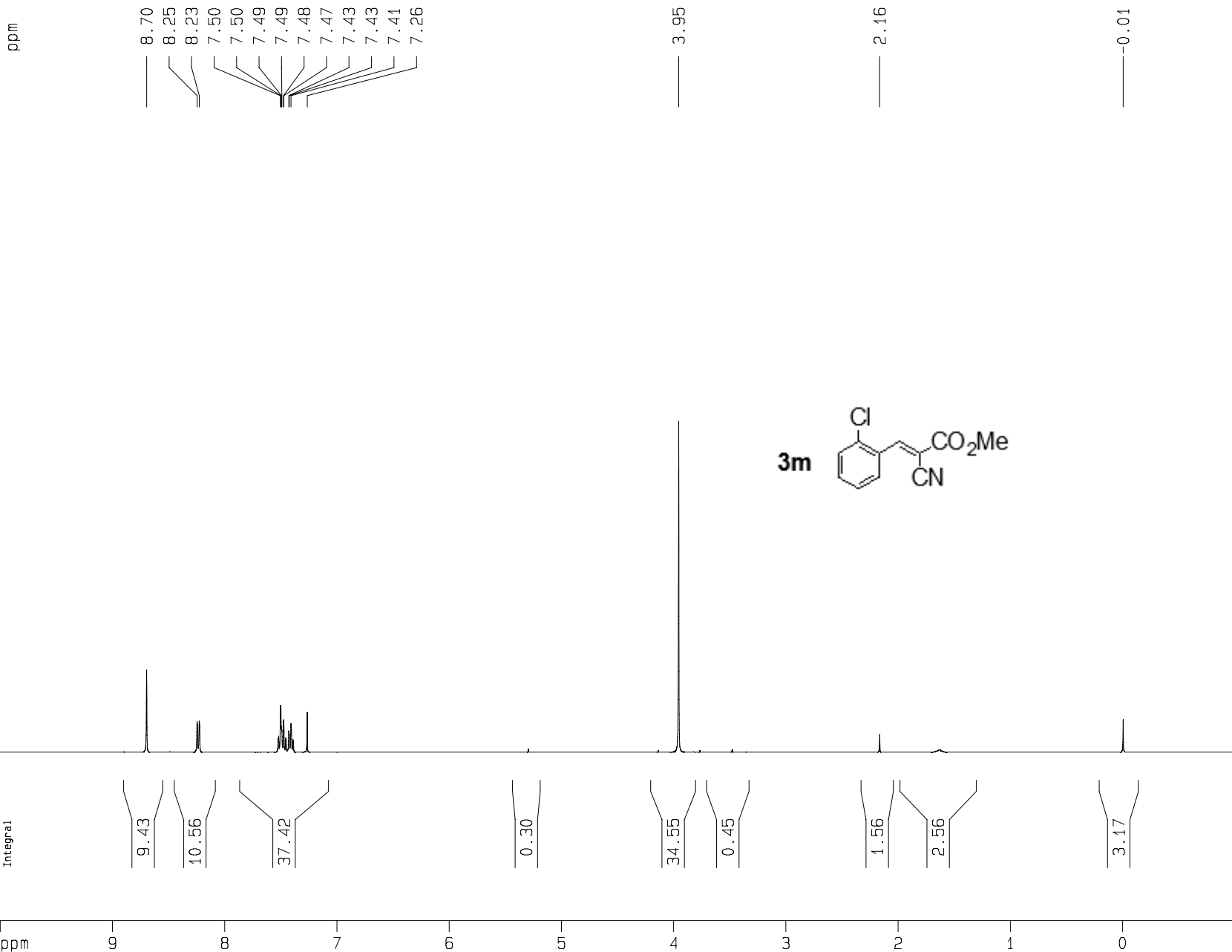
CPDPRG2 waltz16  
NUC2 1H  
PCPD2 80.00 usec  
PL2 -4.00 dB  
PL12 15.00 dB  
PL13 18.00 dB  
SF02 400.1316005 MHz

## F2 - Processing parameters

SI 32768  
SF 100.6127690 MHz  
WDW EM  
SSB 0  
LB 1.00 Hz  
GB 0  
PC 1.40

## 1D NMR plot parameters

CX 22.00 cm  
CY 8.00 cm  
F1P 219.169 ppm  
F1 22051.21 Hz  
F2P -19.179 ppm  
F2 -1929.60 Hz  
PPMCM 10.83398 ppm/cm  
HZCM 1090.03699 Hz/cm



# Current Data Parameters

NAME PG-5  
EXPNO 1  
PROCNO 1

## F2 - Acquisition Parameters

Date\_ 20110707  
Time 9.34  
INSTRUM spect  
PROBHD 5 mm PABBO BB-  
PULPROG zg30  
TD 32768  
SOLVENT CDC13  
NS 16  
DS 0  
SWH 8278.146 Hz  
FIDRES 0.252629 Hz  
AQ 1.9792372 sec  
RG 128  
DW 60.400 usec  
DE 6.00 usec  
TE 673.2 K  
D1 1.00000000 sec  
TD0 1

## ===== CHANNEL f1 =====

NUC1 1H  
P1 9.40 usec  
PL1 -4.00 dB  
SF01 400.1324710 MHz

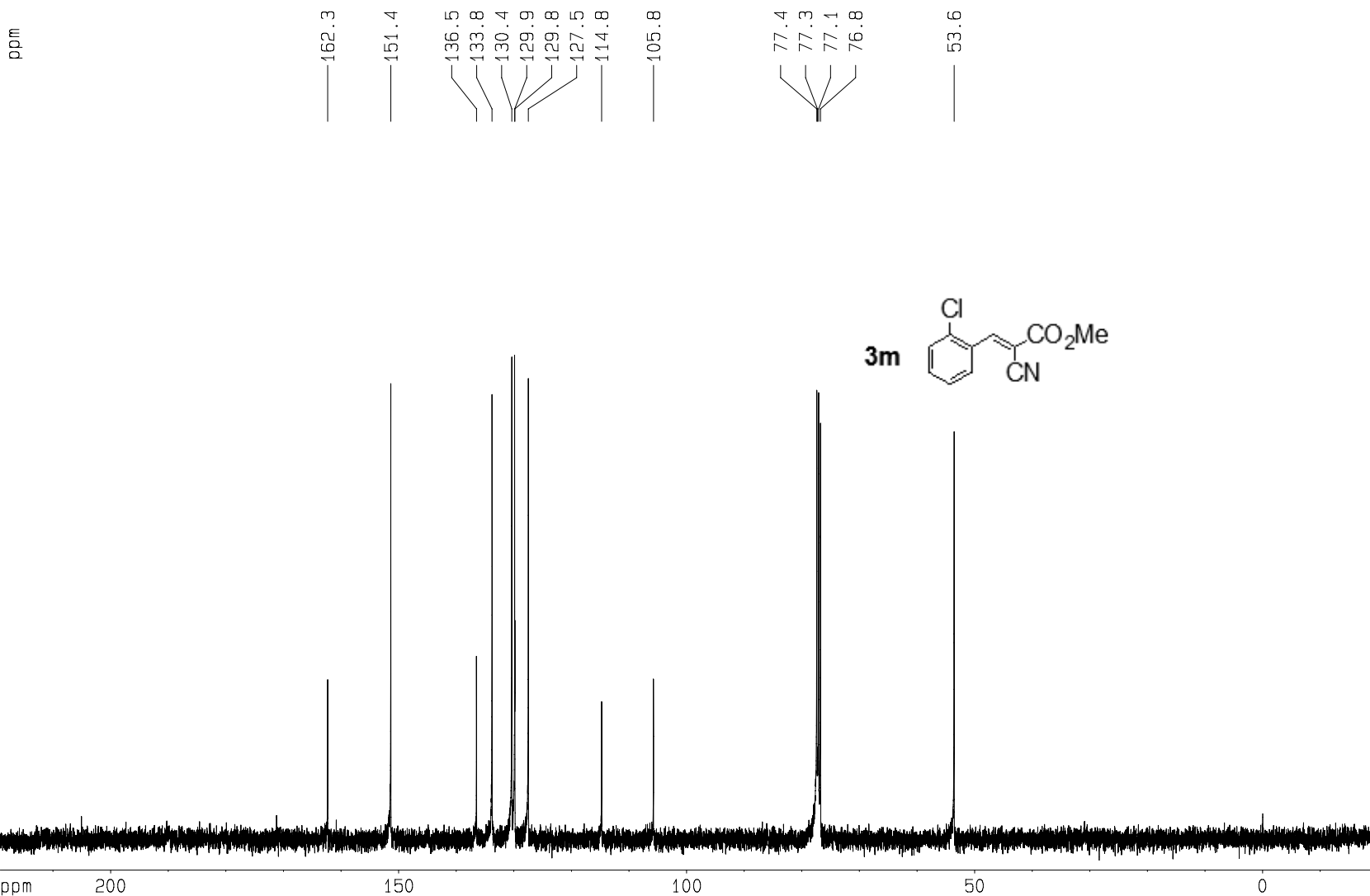
## F2 - Processing parameters

SI 32768  
SF 400.1300077 MHz  
WDW EM  
SSB 0  
LB 0.30 Hz  
GB 0  
PC 1.00

## 1D NMR plot parameters

CX 22.00 cm  
CY 6.00 cm  
F1P 10.000 ppm  
F1 4001.30 Hz  
F2P -1.000 ppm  
F2 -400.13 Hz  
PPMCM 0.50000 ppm/cm  
HZCM 200.06500 Hz/cm

ppm



## Current Data Parameters

NAME PG-5  
EXPNO 2  
PROCNO 1

## F2 - Acquisition Parameters

Date\_ 20110712  
Time 14.10  
INSTRUM spect  
PROBHD 5 mm PABBO BB-  
PULPROG zgpg30  
TD 65536  
SOLVENT CDCl3  
NS 256  
DS 4  
SWH 23980.814 Hz  
FIDRES 0.365918 Hz  
AQ 1.3664756 sec  
RG 1149.4  
DW 20.850 usec  
DE 6.00 usec  
TE 673.2 K  
d11 0.03000000 sec  
D1 2.00000000 sec  
DELTA 1.89999998 sec  
TD0 1

## ===== CHANNEL f1 =====

NUC1 13C  
P1 7.00 usec  
PL1 -3.00 dB  
SF01 100.6228298 MHz

## ===== CHANNEL f2 =====

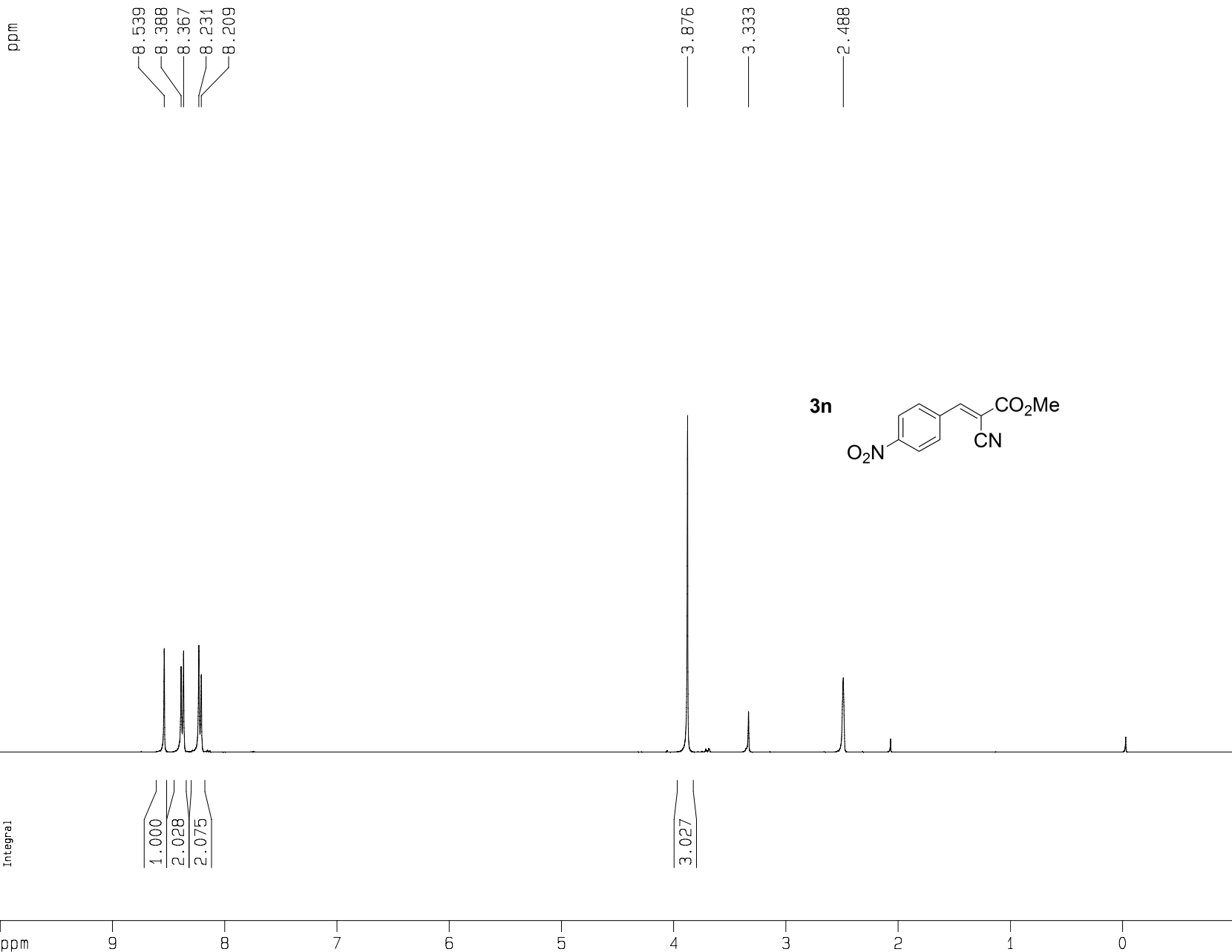
CPDPRG2 waltz16  
NUC2 1H  
PCPD2 80.00 usec  
PL2 -4.00 dB  
PL12 15.00 dB  
PL13 18.00 dB  
SF02 400.1316005 MHz

## F2 - Processing parameters

SI 32768  
SF 100.6127690 MHz  
WDW EM  
SSB 0  
LB 1.00 Hz  
GB 0  
PC 1.40

## 1D NMR plot parameters

CX 22.00 cm  
CY 8.00 cm  
F1P 219.169 ppm  
F1 22051.21 Hz  
F2P -19.179 ppm  
F2 -1929.60 Hz  
PPMCM 10.83398 ppm/cm  
HZCM 1090.03699 Hz/cm



#### Current Data Parameters

NAME PG-2-1  
EXPNO 1  
PROCNO 1

#### F2 - Acquisition Parameters

Date\_ 20111123  
Time 10.08  
INSTRUM spect  
PROBHD 5 mm PABBO BB-  
PULPROG zg30  
TD 32768  
SOLVENT CDCl3  
NS 16  
DS 0  
SWH 8278.146 Hz  
FIDRES 0.252629 Hz  
AQ 1.9792372 sec  
RG 181  
DW 60.400 usec  
DE 6.00 usec  
TE 673.2 K  
D1 1.00000000 sec  
TD0 1

#### ===== CHANNEL f1 =====

NUC1 1H  
P1 9.40 usec  
PL1 -4.00 dB  
SF01 400.1324710 MHz

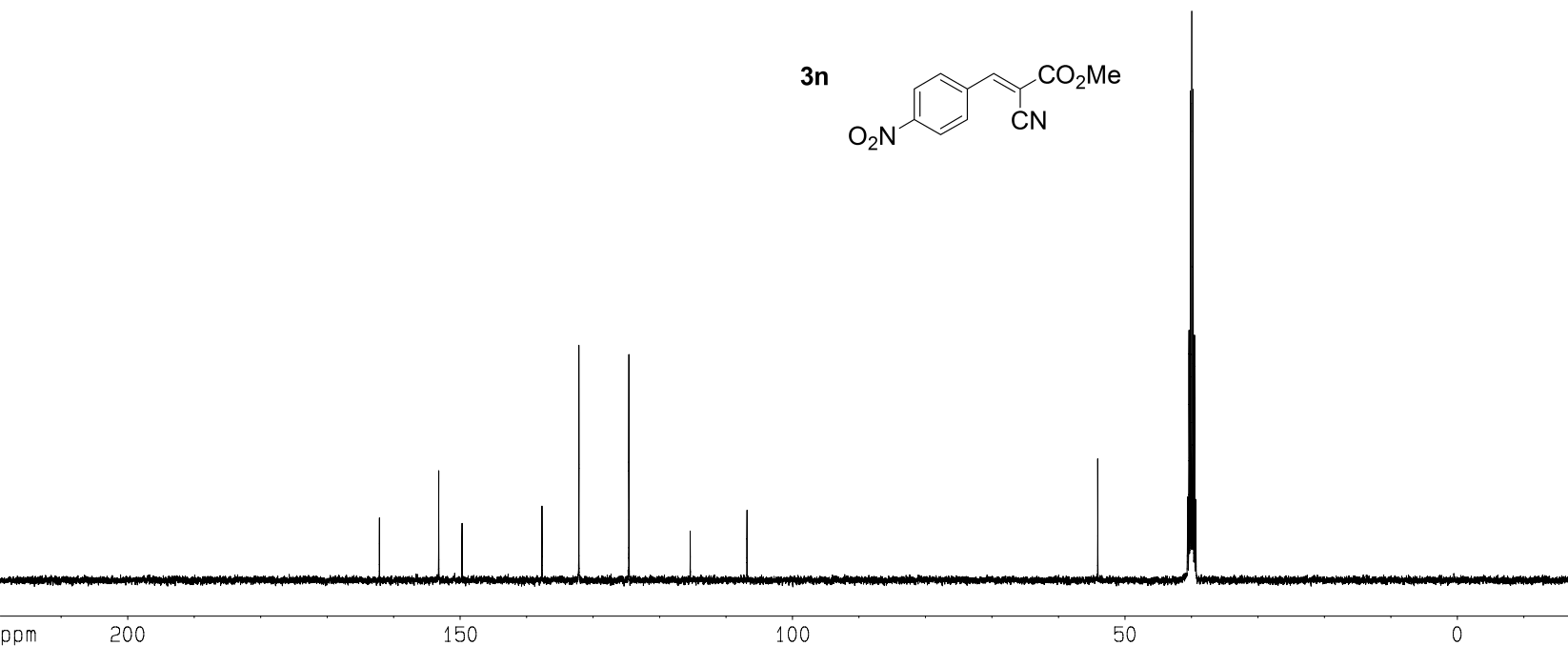
#### F2 - Processing parameters

SI 32768  
SF 400.1300077 MHz  
WDW EM  
SSB 0  
LB 0.30 Hz  
GB 0  
PC 1.00

#### 1D NMR plot parameters

CX 22.00 cm  
CY 6.00 cm  
F1P 10.000 ppm  
F1 4001.30 Hz  
F2P -1.000 ppm  
F2 -400.13 Hz  
PPMCM 0.50000 ppm/cm  
HZCM 200.06500 Hz/cm

ppm



## Current Data Parameters

NAME 13C PG-2-1  
EXPNO 2  
PROCNO 1

## F2 - Acquisition Parameters

Date\_ 20111122  
Time 13.14  
INSTRUM spect  
PROBHD 5 mm PABBO BB-  
PULPROG zgpg30  
TD 65536  
SOLVENT CDC13  
NS 256  
DS 4  
SWH 23980.814 Hz  
FIDRES 0.365918 Hz  
AQ 1.3664756 sec  
RG 1448.2  
DW 20.850 usec  
DE 6.00 usec  
TE 673.2 K  
d11 0.03000000 sec  
D1 2.00000000 sec  
DELTA 1.89999998 sec  
TD0 1

## ===== CHANNEL f1 =====

NUC1 13C  
P1 7.00 usec  
PL1 -3.00 dB  
SF01 100.6228298 MHz

## ===== CHANNEL f2 =====

CPDPRG2 waltz16  
NUC2 1H  
PCPD2 80.00 usec  
PL2 -4.00 dB  
PL12 15.00 dB  
PL13 18.00 dB  
SF02 400.1316005 MHz

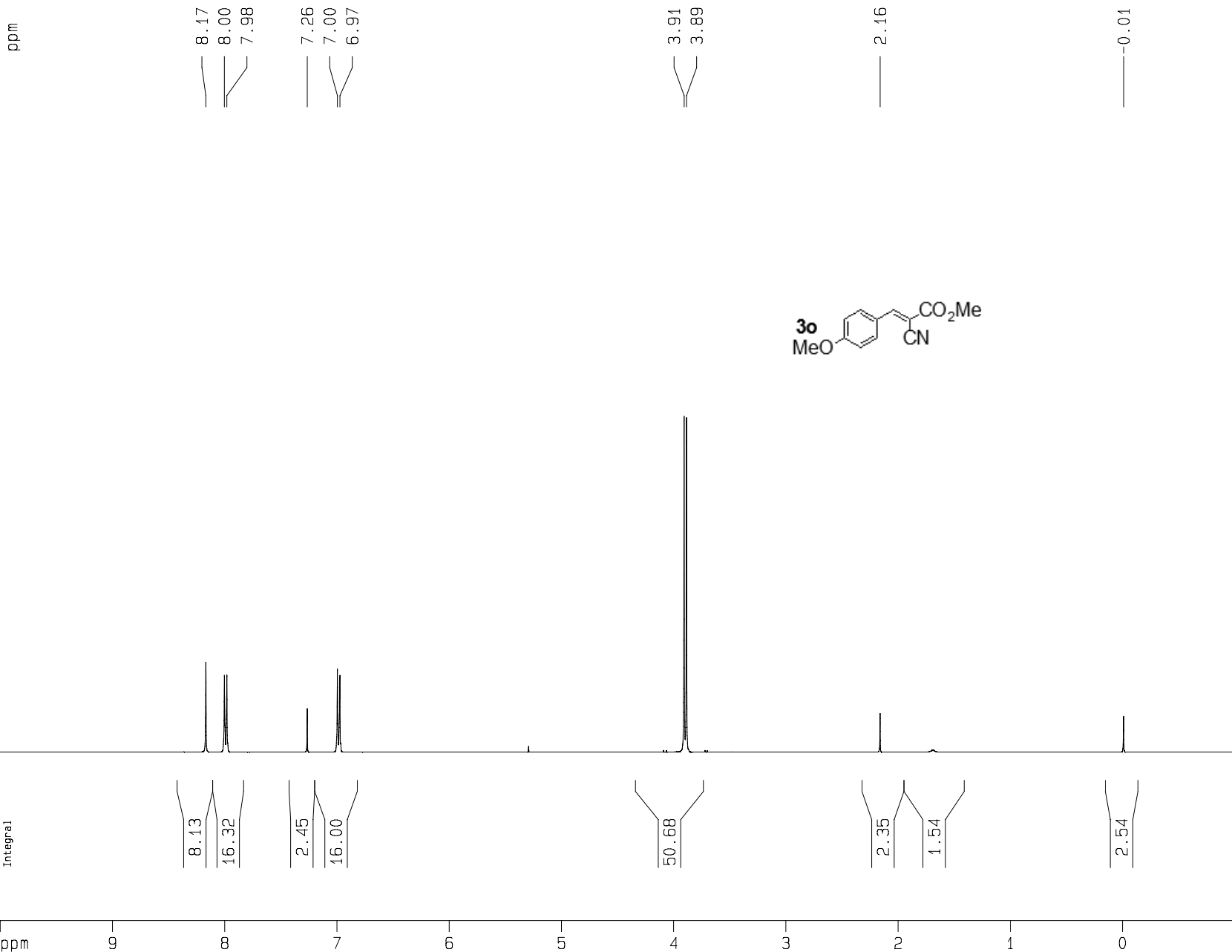
## F2 - Processing parameters

SI 32768  
SF 100.6127690 MHz  
WDW EM  
SSB 0  
LB 1.00 Hz  
GB 0  
PC 1.40

## 1D NMR plot parameters

CX 22.00 cm  
CY 8.00 cm  
F1P 219.169 ppm  
F1 22051.21 Hz  
F2P -19.179 ppm  
F2 -1929.60 Hz  
PPMCM 10.83398 ppm/cm  
HZCM 1090.03699 Hz/cm





Current Data Parameters

NAME PG-7  
EXPNO 1  
PROCNO 1

F2 - Acquisition Parameters

Date\_ 20110707  
Time 9.20  
INSTRUM spect  
PROBHD 5 mm PABBO BB-  
PULPROG zg30  
TD 32768  
SOLVENT CDC13  
NS 16  
DS 0  
SWH 8278.146 Hz  
FIDRES 0.252629 Hz  
AQ 1.9792372 sec  
RG 128  
DW 60.400 usec  
DE 6.00 usec  
TE 673.2 K  
D1 1.00000000 sec  
TD0 1

===== CHANNEL f1 =====

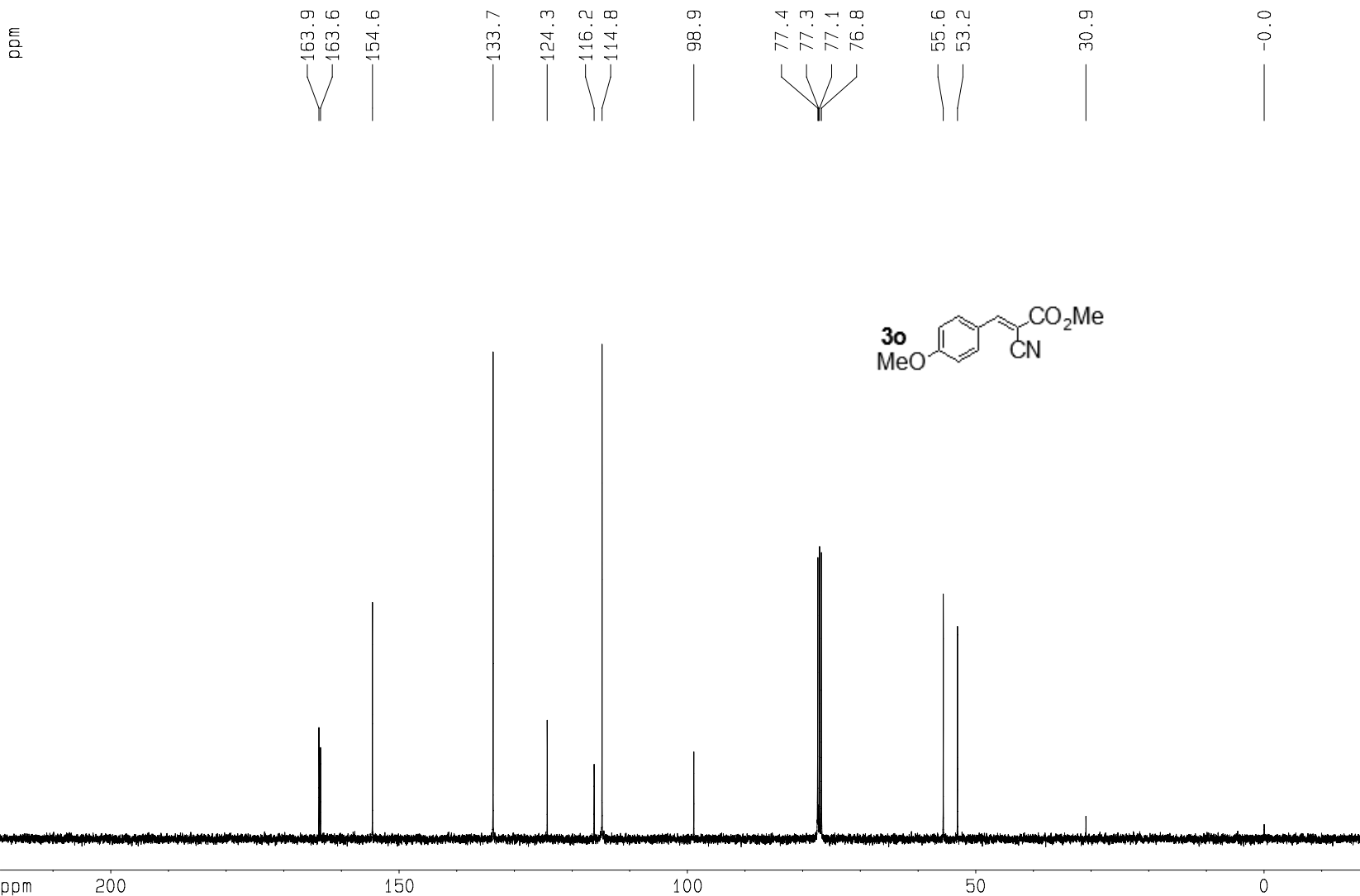
NUC1 1H  
P1 9.40 usec  
PL1 -4.00 dB  
SF01 400.1324710 MHz

F2 - Processing parameters

SI 32768  
SF 400.1300077 MHz  
WDW EM  
SSB 0  
LB 0.30 Hz  
GB 0  
PC 1.00

1D NMR plot parameters

CX 22.00 cm  
CY 6.00 cm  
F1P 10.000 ppm  
F1 4001.30 Hz  
F2P -1.000 ppm  
F2 -400.13 Hz  
PPMCM 0.50000 ppm/cm  
HZCM 200.06500 Hz/cm



## Current Data Parameters

NAME PG-7  
EXPNO 2  
PROCNO 1

## F2 - Acquisition Parameters

Date\_ 20110711  
Time 10.39  
INSTRUM spect  
PROBHD 5 mm PABBO BB-  
PULPROG zgpg30  
TD 65536  
SOLVENT CDCl3  
NS 256  
DS 4  
SWH 23980.814 Hz  
FIDRES 0.365918 Hz  
AQ 1.3664756 sec  
RG 812.7  
DW 20.850 usec  
DE 6.00 usec  
TE 673.2 K  
d11 0.03000000 sec  
D1 2.00000000 sec  
DELTA 1.89999998 sec  
TD0 1

## ===== CHANNEL f1 =====

NUC1 13C  
P1 7.00 usec  
PL1 -3.00 dB  
SF01 100.6228298 MHz

## ===== CHANNEL f2 =====

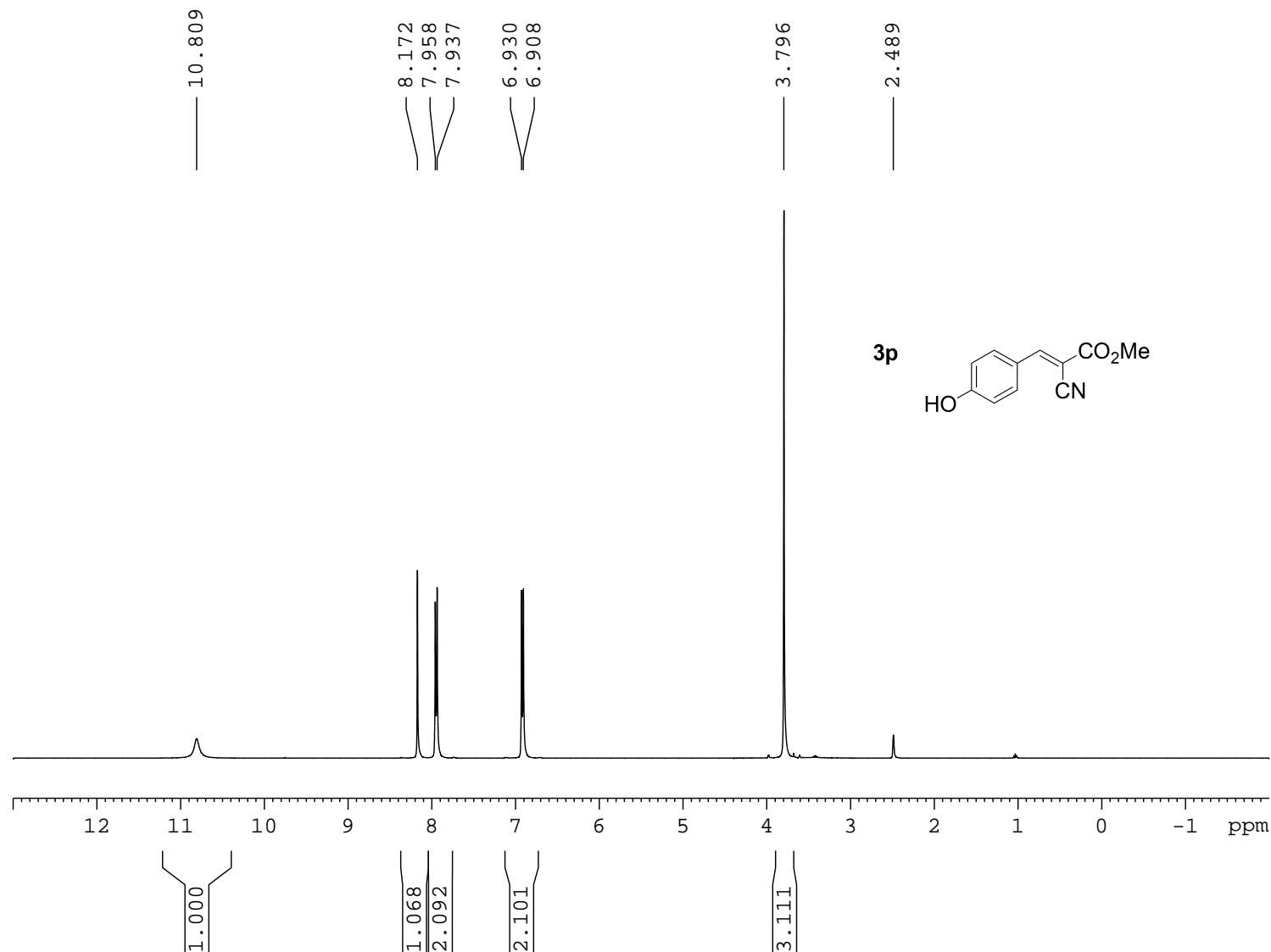
CPDPRG2 waltz16  
NUC2 1H  
PCPD2 80.00 usec  
PL2 -4.00 dB  
PL12 15.00 dB  
PL13 18.00 dB  
SF02 400.1316005 MHz

## F2 - Processing parameters

SI 32768  
SF 100.6127690 MHz  
WDW EM  
SSB 0  
LB 1.00 Hz  
GB 0  
PC 1.40

## 1D NMR plot parameters

CX 22.00 cm  
CY 8.00 cm  
F1P 219.169 ppm  
F1 22051.21 Hz  
F2P -19.179 ppm  
F2 -1929.60 Hz  
PPMCM 10.83398 ppm/cm  
HZCM 1090.03699 Hz/cm

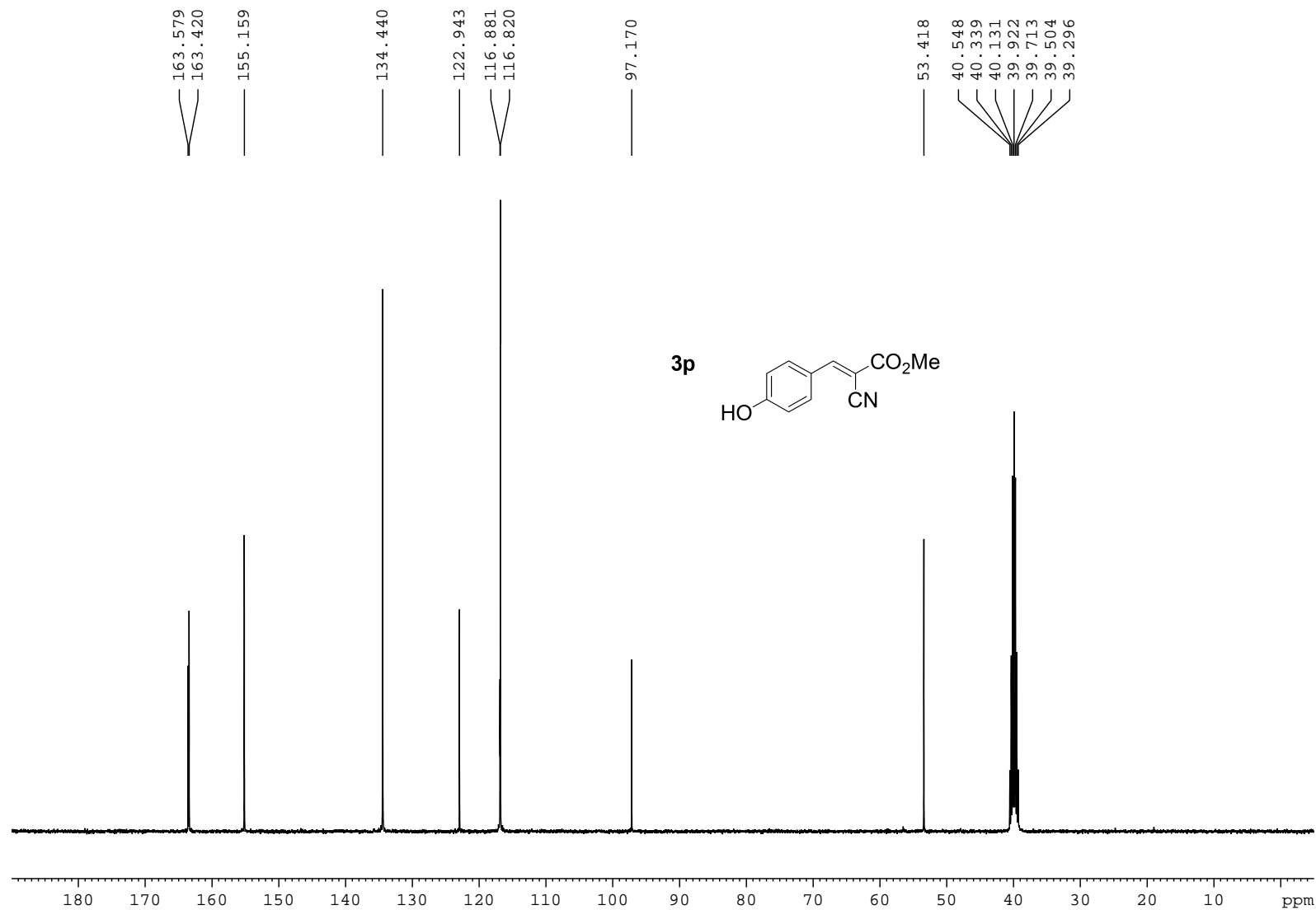


Current Data Parameters  
 NAME y121128-520  
 EXPNO 1  
 PROCNO 1

F2 - Acquisition Parameters  
 Date\_ 20121128  
 Time 15.09  
 INSTRUM spect  
 PROBHD 5 mm PABBO BB-  
 PULPROG zg30  
 TD 32768  
 SOLVENT DMSO  
 NS 16  
 DS 0  
 SWH 8278.146 Hz  
 FIDRES 0.252629 Hz  
 AQ 1.9792372 sec  
 RG 71.8  
 DW 60.400 usec  
 DE 6.00 usec  
 TE 673.2 K  
 D1 1.00000000 sec  
 TD0 1

===== CHANNEL f1 =====  
 NUC1 1H  
 P1 9.40 usec  
 PL1 -4.00 dB  
 SFO1 400.1324710 MHz

F2 - Processing parameters  
 SI 32768  
 SF 400.1300077 MHz  
 WDW EM  
 SSB 0  
 LB 0.30 Hz  
 GB 0  
 PC 1.00



Current Data Parameters  
 NAME 13C y121128-520  
 EXPNO 2  
 PROCNO 1

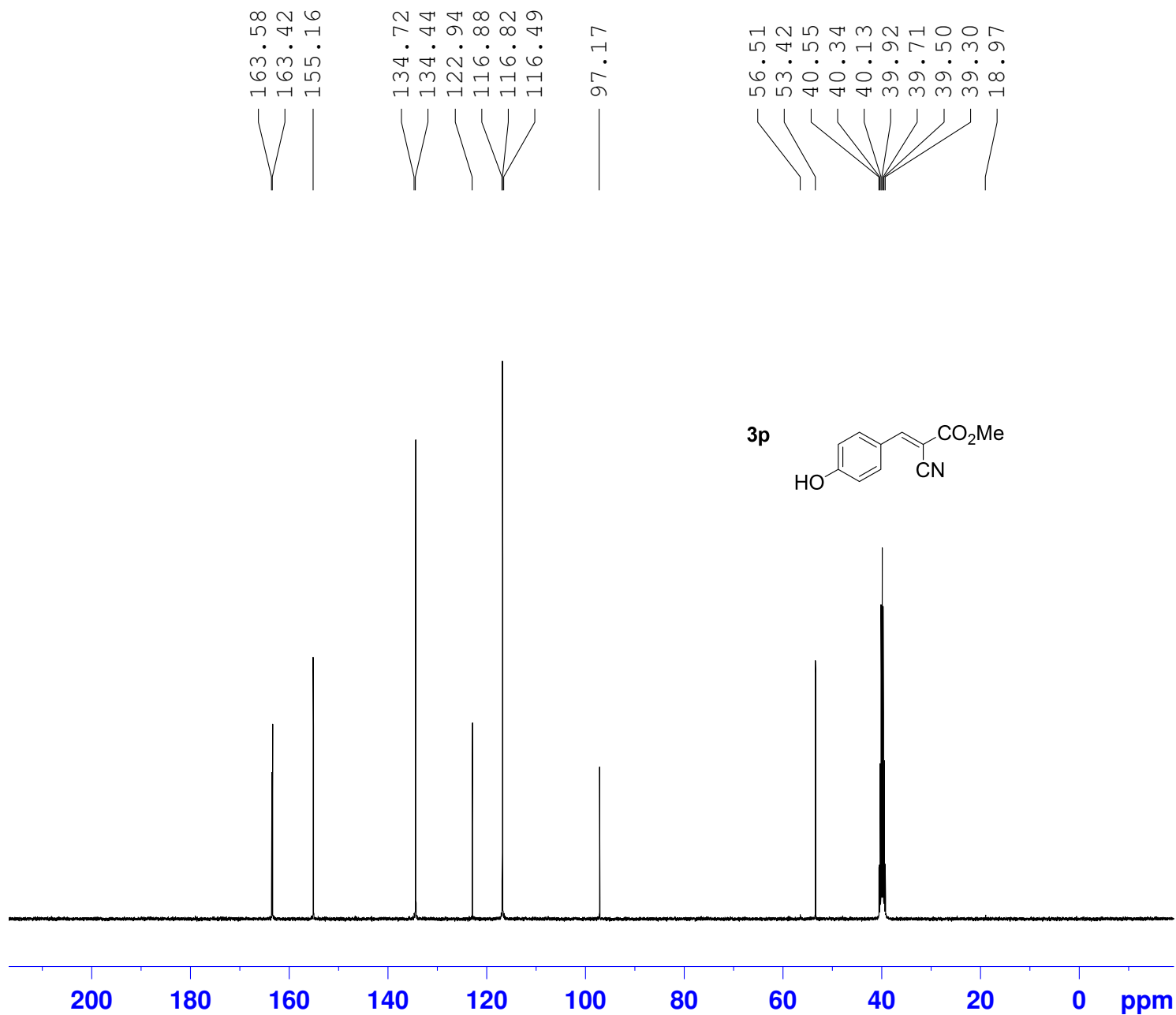
F2 - Acquisition Parameters  
 Date\_ 20121128  
 Time 13.49  
 INSTRUM spect  
 PROBHD 5 mm PABBO BB-  
 PULPROG zgpg30  
 TD 65536  
 SOLVENT DMSO  
 NS 512  
 DS 4  
 SWH 23980.814 Hz  
 FIDRES 0.365918 Hz  
 AQ 1.3664756 sec  
 RG 2580.3  
 DW 20.850 usec  
 DE 6.00 usec  
 TE 673.2 K  
 d11 0.03000000 sec  
 D1 2.00000000 sec  
 DELTA 1.89999998 sec  
 TD0 1

===== CHANNEL f1 =====  
 NUC1 13C  
 P1 7.00 usec  
 PL1 -3.00 dB  
 SFO1 100.6228298 MHz

===== CHANNEL f2 =====  
 CPDPRG2 waltz16  
 NUC2 1H  
 PCPD2 80.00 usec  
 PL2 -4.00 dB  
 PL12 15.00 dB  
 PL13 18.00 dB  
 SFO2 400.1316005 MHz

F2 - Processing parameters  
 SI 32768  
 SF 100.6127690 MHz  
 WDW EM  
 SSB 0  
 LB 1.00 Hz  
 GB 0  
 PC 1.40

1D NMR plot parameters  
 CX 22.00 cm  
 CY 8.00 cm  
 F1P 219.169 ppm  
 F1 22051.21 Hz  
 F2P -19.179 ppm  
 F2 -1929.60 Hz  
 PPMCM 10.83398 ppm/cm  
 HZCM 1090.03699 Hz/cm



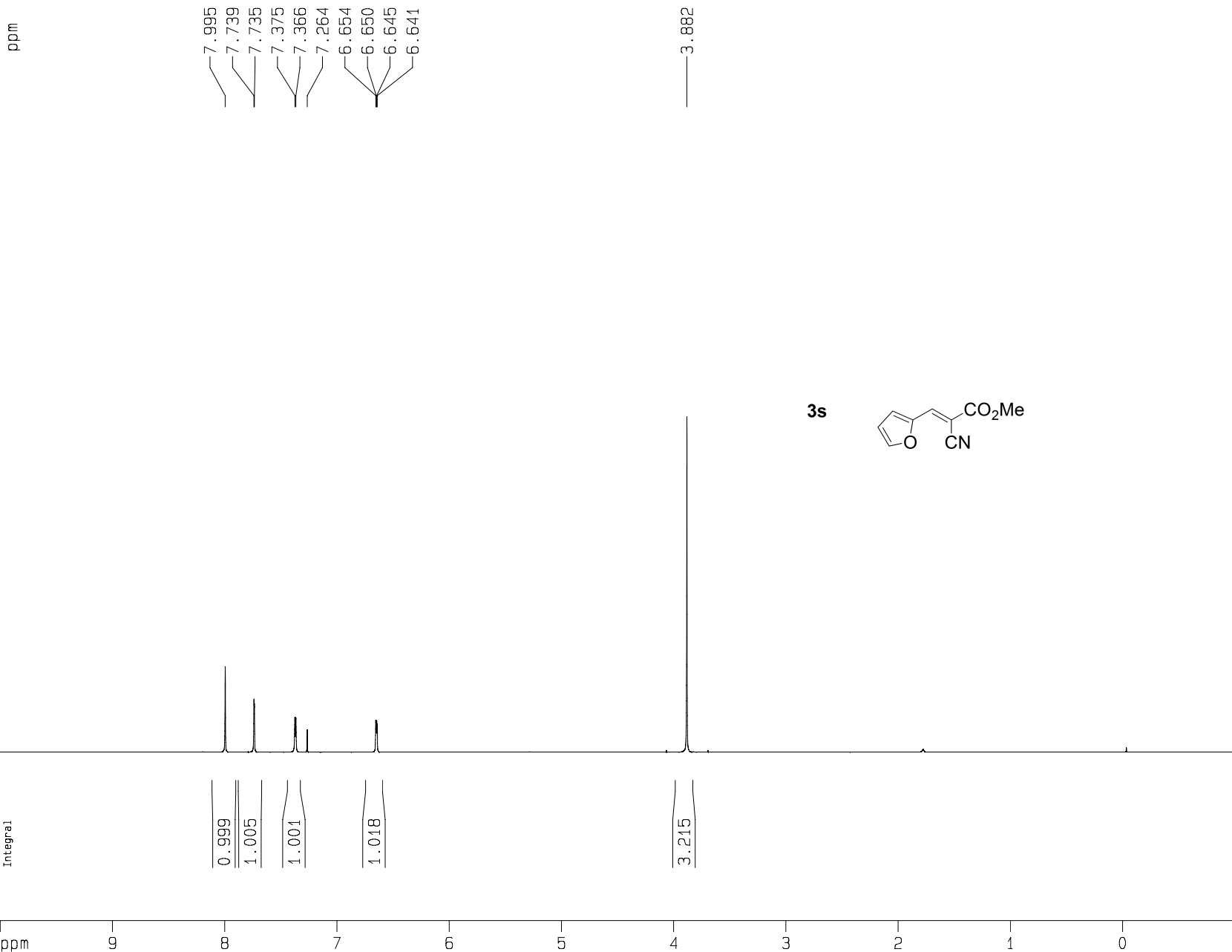
Current Data Parameters  
 NAME 13C yl21128-520  
 EXPNO 2  
 PROCNO 1

F2 - Acquisition Parameters  
 Date\_ 20121128  
 Time 13.49  
 INSTRUM spect  
 PROBHD 5 mm PABBO BB-  
 PULPROG zgpg30  
 TD 65536  
 SOLVENT DMSO  
 NS 512  
 DS 4  
 SWH 23980.814 Hz  
 FIDRES 0.365918 Hz  
 AQ 1.3664756 sec  
 RG 2580.3  
 DW 20.850 usec  
 DE 6.00 usec  
 TE 673.2 K  
 d11 0.03000000 sec  
 D1 2.00000000 sec  
 DELTA 1.89999998 sec  
 TD0 1

===== CHANNEL f1 =====  
 NUC1 13C  
 P1 7.00 usec  
 PL1 -3.00 dB  
 SFO1 100.6228298 MHz

===== CHANNEL f2 =====  
 CPDPRG2 waltz16  
 NUC2 1H  
 PCPD2 80.00 usec  
 PL2 -4.00 dB  
 PL12 15.00 dB  
 PL13 18.00 dB  
 SFO2 400.1316005 MHz

F2 - Processing parameters  
 SI 32768  
 SF 100.6127690 MHz  
 WDW EM  
 SSB 0  
 LB 1.00 Hz  
 GB 0  
 PC 1.40



# Current Data Parameters

NAME PG-19  
EXPNO 1  
PROCNO 1

## F2 - Acquisition Parameters

Date\_ 20111130  
Time 15.04  
INSTRUM spect  
PROBHD 5 mm PABBO BB-  
PULPROG zg30  
TD 32768  
SOLVENT CDC13  
NS 16  
DS 0  
SWH 8278.146 Hz  
FIDRES 0.252629 Hz  
AQ 1.9792372 sec  
RG 128  
DW 60.400 usec  
DE 6.00 usec  
TE 673.2 K  
D1 1.00000000 sec  
TD0 1

## ===== CHANNEL f1 =====

NUC1 1H  
P1 9.40 usec  
PL1 -4.00 dB  
SF01 400.1324710 MHz

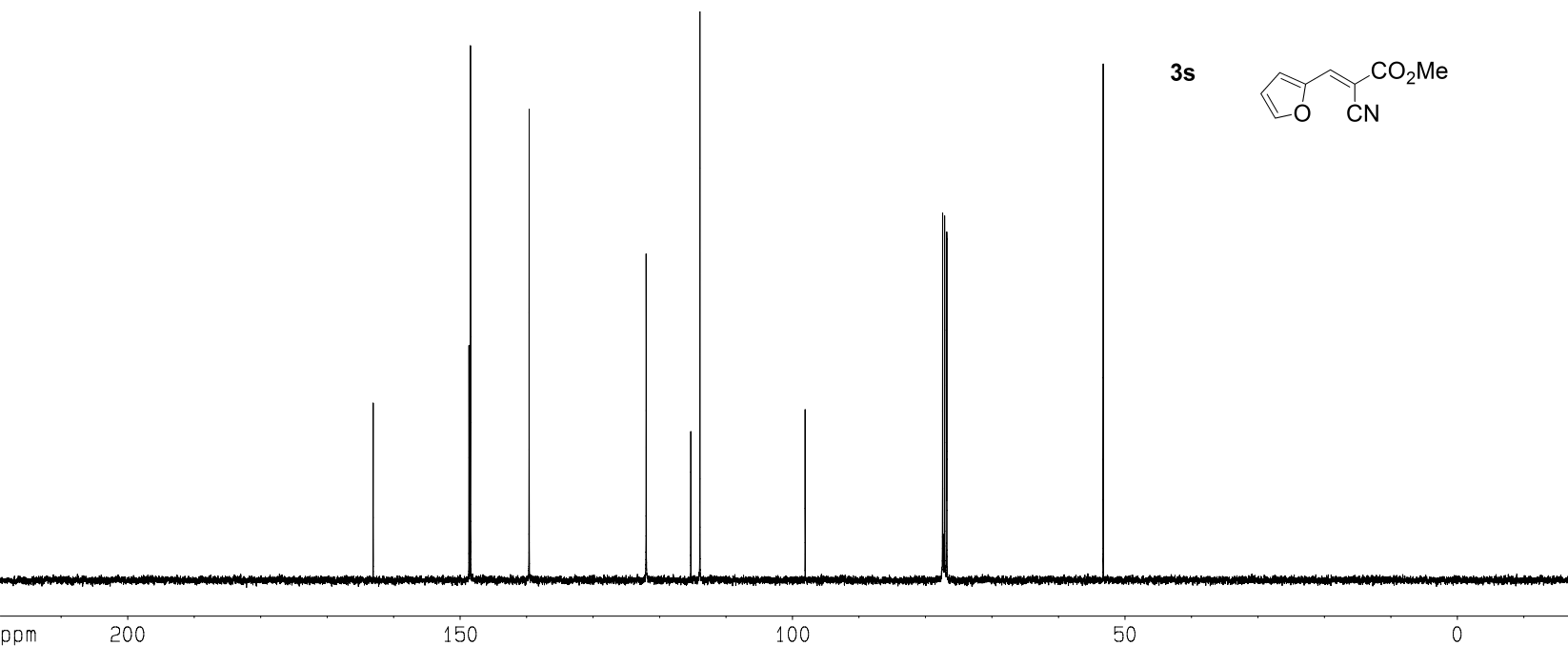
## F2 - Processing parameters

SI 32768  
SF 400.1300077 MHz  
WDW EM  
SSB 0  
LB 0.30 Hz  
GB 0  
PC 1.00

## 1D NMR plot parameters

CX 22.00 cm  
CY 6.00 cm  
F1P 10.000 ppm  
F1 4001.30 Hz  
F2P -1.000 ppm  
F2 -400.13 Hz  
PPMCM 0.50000 ppm/cm  
HZCM 200.06500 Hz/cm

ppm



## Current Data Parameters

NAME 13C PG-19  
EXPNO 2  
PROCNO 1

## F2 - Acquisition Parameters

Date\_ 20111129  
Time 14.46  
INSTRUM spect  
PROBHD 5 mm PABBO BB-  
PULPROG zgpg30  
TD 65536  
SOLVENT CDC13  
NS 256  
DS 4  
SWH 23980.814 Hz  
FIDRES 0.365918 Hz  
AQ 1.3664756 sec  
RG 574.7  
DW 20.850 usec  
DE 6.00 usec  
TE 673.2 K  
d11 0.03000000 sec  
D1 2.00000000 sec  
DELTA 1.89999998 sec  
TD0 1

## ===== CHANNEL f1 =====

NUC1 13C  
P1 7.00 usec  
PL1 -3.00 dB  
SF01 100.6228298 MHz

## ===== CHANNEL f2 =====

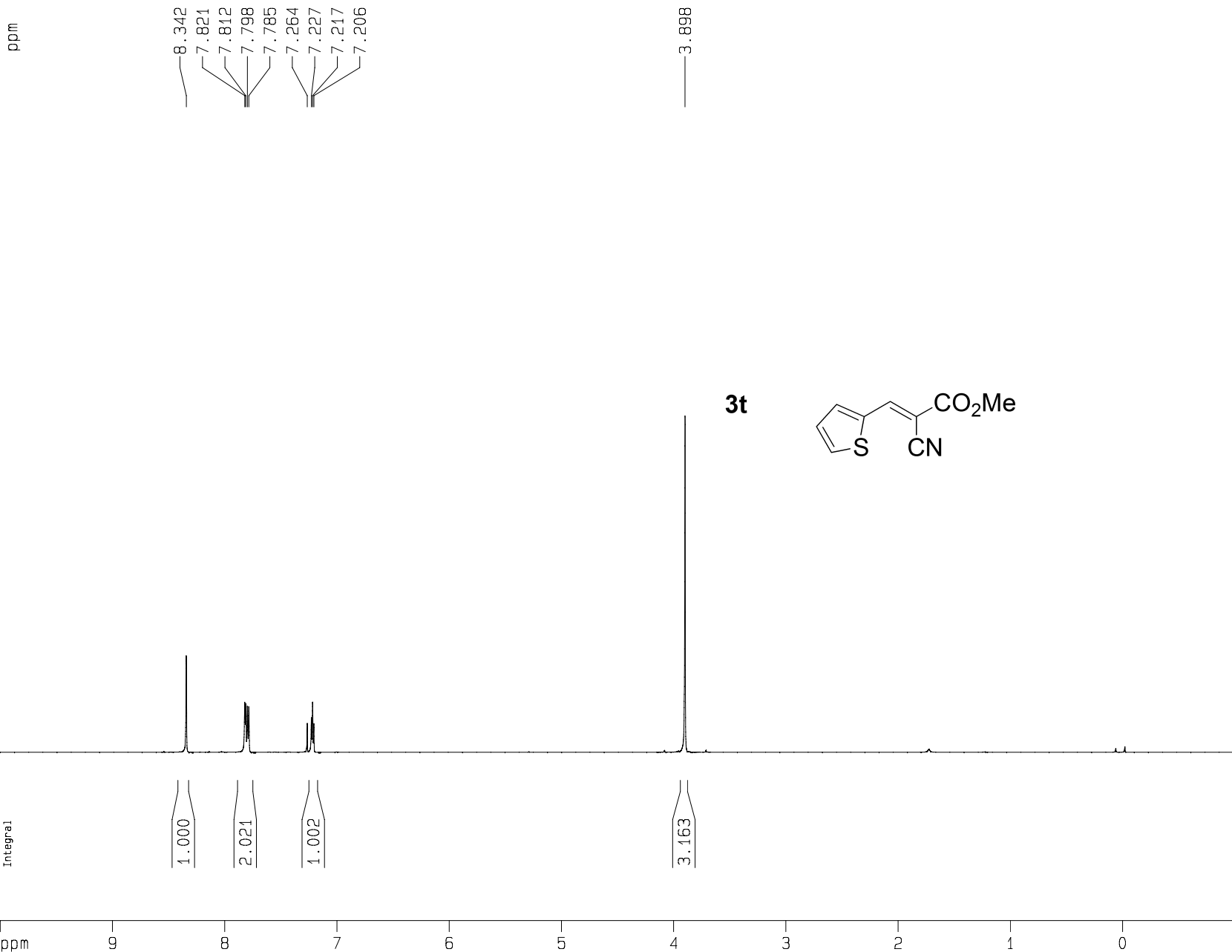
CPDPRG2 waltz16  
NUC2 1H  
PCPD2 80.00 usec  
PL2 -4.00 dB  
PL12 15.00 dB  
PL13 18.00 dB  
SF02 400.1316005 MHz

## F2 - Processing parameters

SI 32768  
SF 100.6127690 MHz  
WDW EM  
SSB 0  
LB 1.00 Hz  
GB 0  
PC 1.40

## 1D NMR plot parameters

CX 22.00 cm  
CY 8.00 cm  
F1P 219.169 ppm  
F1 22051.21 Hz  
F2P -19.179 ppm  
F2 -1929.60 Hz  
PPMCM 10.83398 ppm/cm  
HZCM 1090.03699 Hz/cm



# Current Data Parameters

NAME PG-21  
EXPNO 1  
PROCNO 1

## F2 - Acquisition Parameters

Date\_ 20111130  
Time 15.13  
INSTRUM spect  
PROBHD 5 mm PABBO BB-  
PULPROG zg30  
TD 32768  
SOLVENT CDC13  
NS 16  
DS 0  
SWH 8278.146 Hz  
FIDRES 0.252629 Hz  
AQ 1.9792372 sec  
RG 128  
DW 60.400 usec  
DE 6.00 usec  
TE 673.2 K  
D1 1.00000000 sec  
TD0 1

## ===== CHANNEL f1 =====

NUC1 1H  
P1 9.40 usec  
PL1 -4.00 dB  
SFO1 400.1324710 MHz

## F2 - Processing parameters

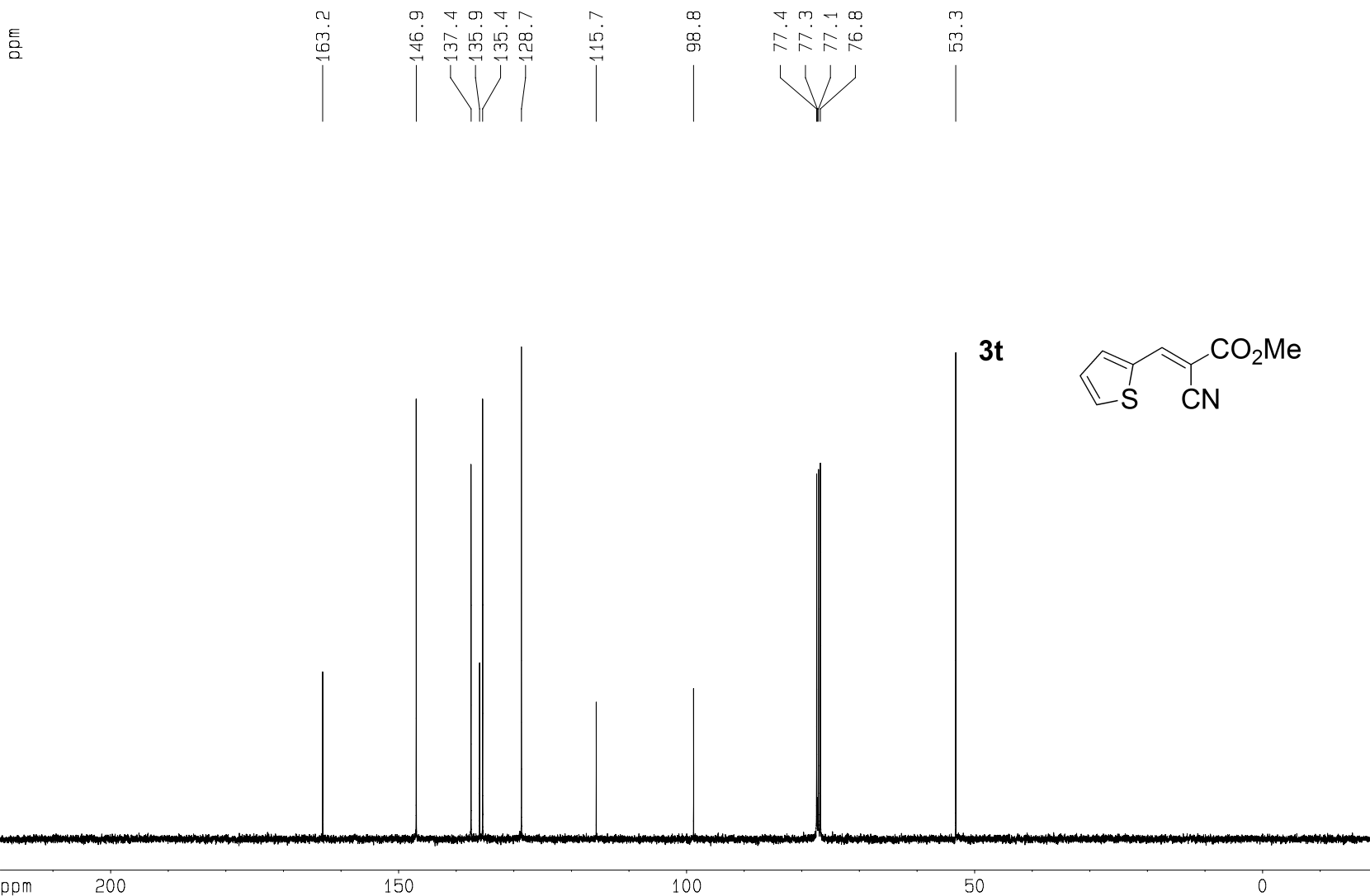
SI 32768  
SF 400.1300077 MHz  
WDW EM  
SSB 0  
LB 0.30 Hz  
GB 0  
PC 1.00

## 1D NMR plot parameters

CX 22.00 cm  
CY 6.00 cm  
F1P 10.000 ppm  
F1 4001.30 Hz  
F2P -1.000 ppm  
F2 -400.13 Hz  
PPMCM 0.50000 ppm/cm  
HZCM 200.06500 Hz/cm



ppm



## Current Data Parameters

NAME 13C PG-21  
EXPNO 2  
PROCNO 1

## F2 - Acquisition Parameters

Date\_ 20111129  
Time 15.31  
INSTRUM spect  
PROBHD 5 mm PABBO BB-  
PULPROG zgpg30  
TD 65536  
SOLVENT CDCl3  
NS 256  
DS 4  
SWH 23980.814 Hz  
FIDRES 0.365918 Hz  
AQ 1.3664756 sec  
RG 724.1  
DW 20.850 usec  
DE 6.00 usec  
TE 673.2 K  
d11 0.03000000 sec  
D1 2.00000000 sec  
DELTA 1.89999998 sec  
TD0 1

## ===== CHANNEL f1 =====

NUC1 13C  
P1 7.00 usec  
PL1 -3.00 dB  
SF01 100.6228298 MHz

## ===== CHANNEL f2 =====

CPDPRG2 waltz16  
NUC2 1H  
PCPD2 80.00 usec  
PL2 -4.00 dB  
PL12 15.00 dB  
PL13 18.00 dB  
SF02 400.1316005 MHz

## F2 - Processing parameters

SI 32768  
SF 100.6127690 MHz  
WDW EM  
SSB 0  
LB 1.00 Hz  
GB 0  
PC 1.40

## 1D NMR plot parameters

CX 22.00 cm  
CY 8.00 cm  
F1P 219.169 ppm  
F1 22051.21 Hz  
F2P -19.179 ppm  
F2 -1929.60 Hz  
PPMCM 10.83398 ppm/cm  
HZCM 1090.03699 Hz/cm