

Supplementary Material

Calcium-Mediated Hydrophosphorylation of Organic Isocyanates with Diphenylphosphane Oxide

Stephan Härling, Julia Greiser, Tareq M. A. Al-Shboul,
Helmar Görls, Sven Krieck, Matthias Westerhausen*

Content:

Molecular structures and numbering schemes of	
<i>N</i> -Isopropyl-(diphenylphosphoryl)formamide (1)	Figure S1
<i>N</i> -tert-Butyl-(diphenylphosphoryl)formamide (2)	Figure S2
<i>N</i> -Cyclohexyl-(diphenylphosphoryl)formamide (3)	Figure S3
<i>N</i> -Phenyl-(diphenylphosphoryl)formamide (4)	Figure S4
<i>N</i> -2,4,6-Trimethylphenyl-(diphenylphosphoryl)formamide (6)	Figure S5
<i>N</i> -Naphthyl-(diphenylphosphoryl)formamide (7)	Figure S6
<i>N</i> -Cyclohexyl-(diphenylphosphoryl)thioformamide (9)	Figure S7
<i>N</i> -Phenyl-(diphenylphosphoryl)thioformamide (10)	Figure S8
<i>N</i> -4-Methylphenyl-(diphenylphosphoryl)thioformamide (11)	Figure S9

Figure S1: Molecular structure and numbering scheme of *N*-isopropyl-(diphenylphosphoryl)-formamide (**1**). The ellipsoids represent a probability of 40 %, H atoms are shown with arbitrary radii. Selected structural parameters are listed in Table 2.

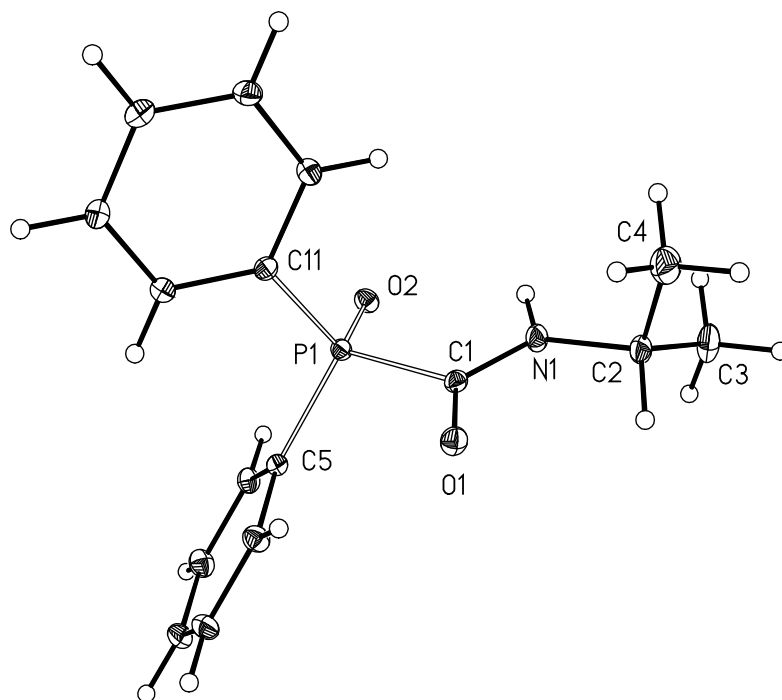


Figure S2: Molecular structure and numbering scheme of *N*-tert-butyl-(diphenylphosphoryl)-formamide (**2**). The ellipsoids represent a probability of 40 %, H atoms are shown with arbitrary radii. Selected structural parameters are listed in Table 2.

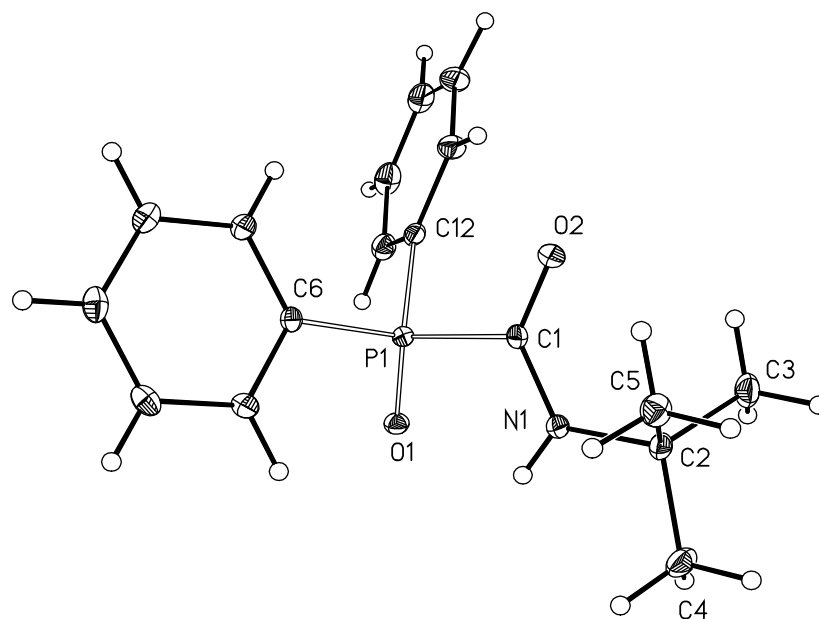


Figure S3: Molecular structure and numbering scheme of *N*-cyclohexyl-(diphenylphosphoryl)formamide (**3**). The ellipsoids represent a probability of 40 %, H atoms are shown with arbitrary radii. Selected structural parameters are listed in Table 2.

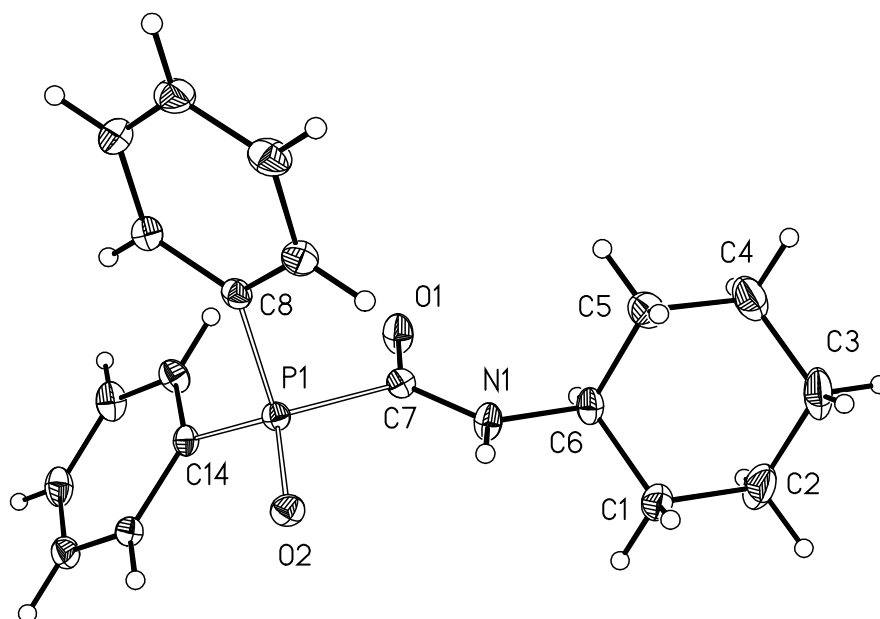


Figure S4: Molecular structure and numbering scheme of *N*-phenyl-(diphenylphosphoryl)formamide (**4**). The ellipsoids represent a probability of 40 %, H atoms are shown with arbitrary radii. Selected structural parameters are listed in Table 2.

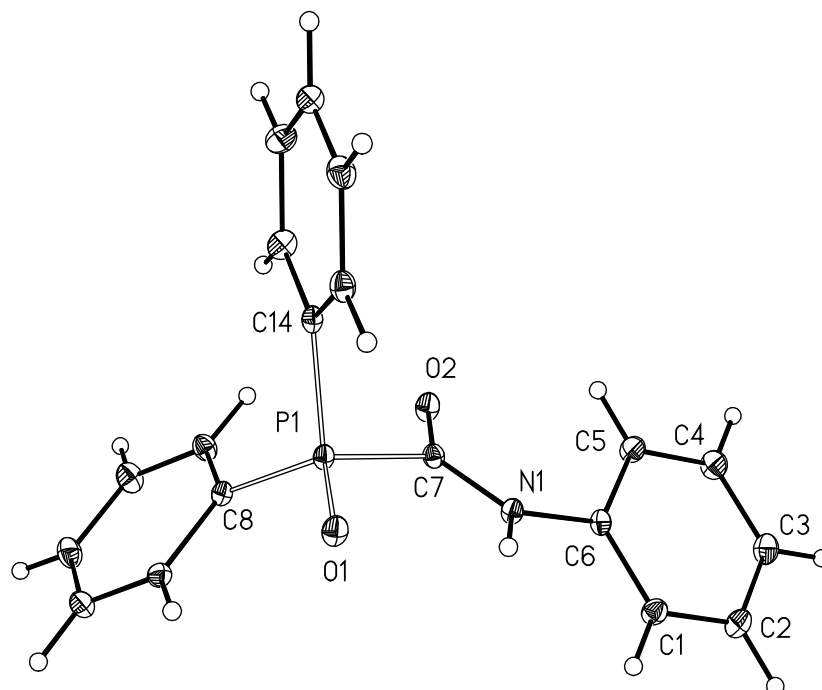


Figure S5: Molecular structure and numbering scheme of *N*-2,4,6-trimethylphenyl-(diphenylphosphoryl)formamide (**6**). The ellipsoids represent a probability of 40 %, H atoms are shown with arbitrary radii. Selected structural parameters are listed in Table 2.

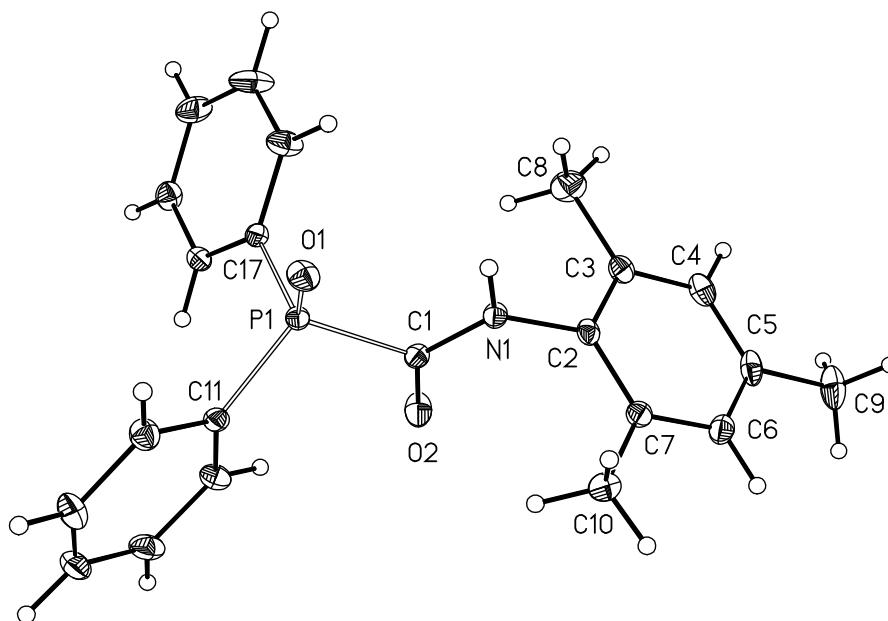


Figure S6: Molecular structure and numbering scheme of *N*-naphthyl-(diphenylphosphoryl)formamide (**7**). The ellipsoids represent a probability of 40 %, H atoms are shown with arbitrary radii. The asymmetric unit contains two crystallographically independent molecules “A” and “B”; only molecule A is displayed. Selected structural parameters are listed in Table 2.

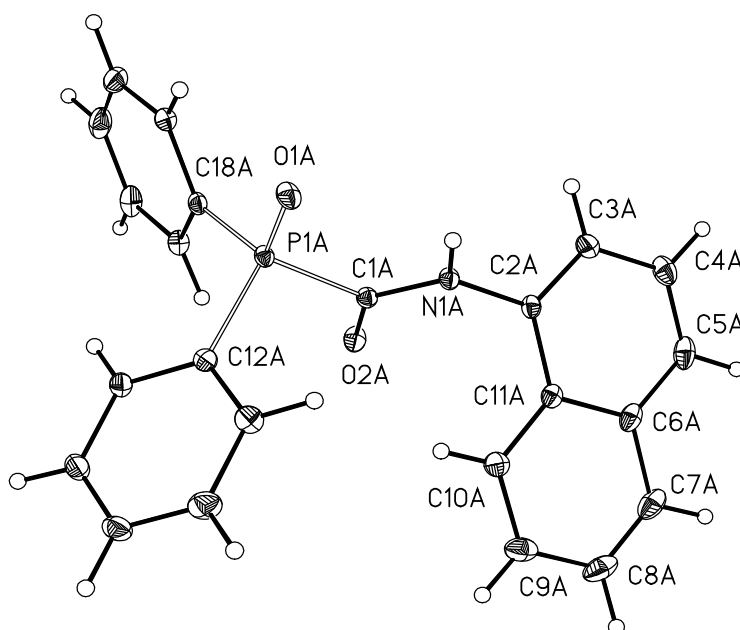


Figure S7: Molecular structure and numbering scheme of *N*-cyclohexyl-(diphenylphosphoryl)thioformamide (**9**). The ellipsoids represent a probability of 40 %, H atoms are shown with arbitrary radii. The asymmetric unit contains two crystallographically independent molecules “A” and “B”; only molecule A is displayed. Selected structural parameters are listed in Table 2.

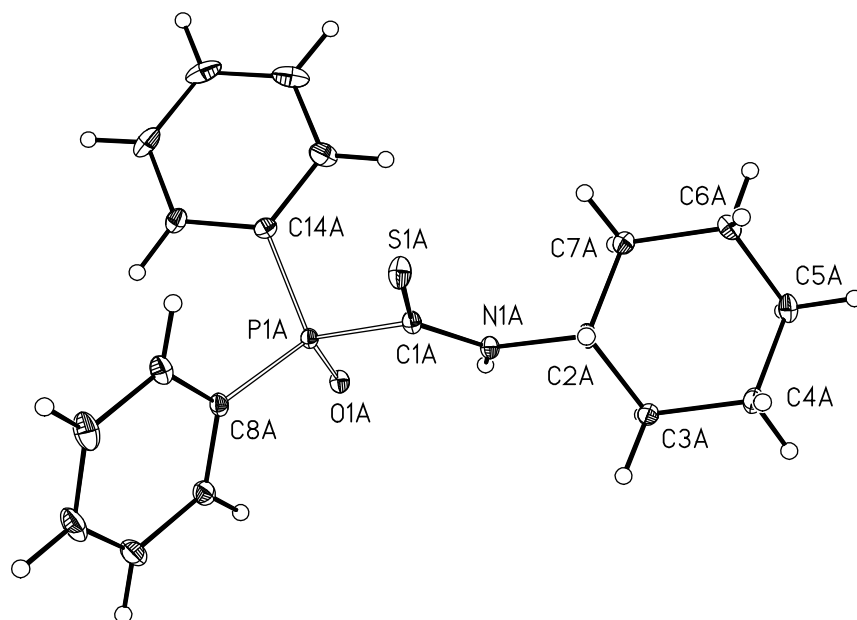


Figure S8: Molecular structure and numbering scheme of *N*-phenyl-(diphenylphosphoryl)thioformamide (**10**). The ellipsoids represent a probability of 40 %, H atoms are shown with arbitrary radii. Selected structural parameters are listed in Table 2.

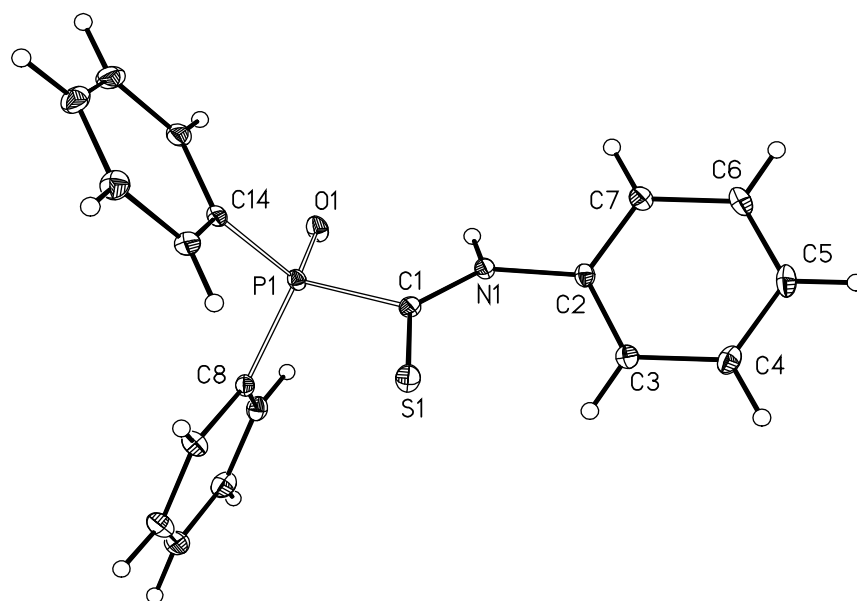


Figure S9: Molecular structure and numbering scheme of *N*-4-methylphenyl-(diphenylphosphoryl)thioformamide (**11**). The ellipsoids represent a probability of 40 %, H atoms are shown with arbitrary radii. Selected structural parameters are listed in Table 2.

