

10.1071/CH13438_AC

© CSIRO 2014

Australian Journal of Chemistry 2014, 67(2), 283-288

Supplementary Material

An Efficient One-Pot Two Component Protocol for Regio- and Chemoselective Synthesis of 5-Aryloyl-1,3,7,9-tetraalkyl-2,8-dithioxo-2,3,8,9-tetrahydro-1*H*-pyrano[2,3-*d*:6,5-*d'*]dipyrimidine-4,6(5*H*,7*H*)-diones

Mehdi Rimaz,^{A,D} Hossein Rabiei,^A Behzad Khalili,^B and Rolf H. Prager^C

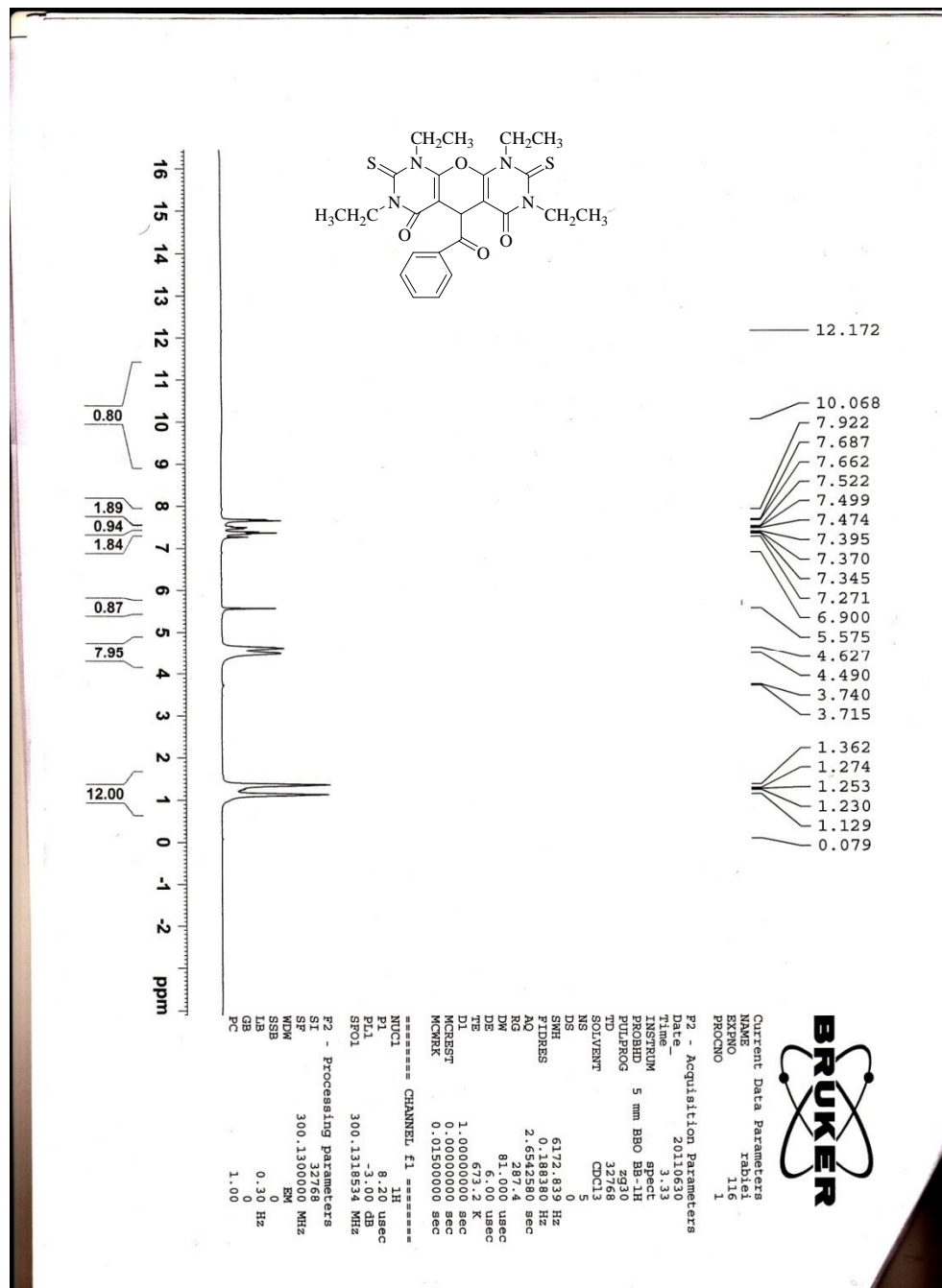
^ADepartment of Chemistry, Payame Noor University, PO Box 19395-3697, Tehran, Iran

^BDepartment of Chemistry, Faculty of Sciences, University of Guilan, PO Box 41335-1914, Rasht, Iran

^CSchool of Chemistry, Physics and Earth Sciences, Flinders University, Adelaide 5001, Australia

^DCorresponding author. Email: rimaz.mehdi@gmail.com

Spectra of compound **1a** :



- 12.172
- 10.068
- 7.922
- 7.687
- 7.662
- 7.522
- 7.499
- 7.474
- 7.395
- 7.370
- 7.345
- 7.271
- 6.900
- 5.575
- 4.627
- 4.490
- 3.740
- 3.715
- 1.362
- 1.274
- 1.253
- 1.230
- 1.129
- 0.079

16 15 14 13 12 11 10 9 8 7 6 5 4 3 2 1 0 -1 -2 ppm

0.80

1.89

0.94

1.84

0.87

7.95

12.00

Current Data Parameters
 NAME rabbi1
 EXNO 116
 PROCNO 1

F2 - Acquisition Parameters
 Date_ 20110630
 Time 3:33
 INSTRUM spect
 PROBNM 5 mm BBO BB1H
 PULPROG zg30
 TD 32768
 SOLVENT CDCl3
 NS 5
 DS 0
 SWH 6172.833 Hz
 FIDRES 0.1442580 Hz
 AQ 2.642580 sec
 RG 287.4
 DW 81.000 usec
 DE 6.00 usec
 TE 673.2 K
 D1 1.00000000 sec
 MCKRES1 0.00000000 sec
 MCKRES2 0.01500000 sec

===== CHANNEL f1 =====
 NUC1 1H
 P1 8.20 usec
 PL1 -3.00 dB
 SFO1 300.1318534 MHz

F2 - Processing parameters
 SF 300.1300000 MHz
 SP 32768
 WDW RM
 SSB 0
 LB 0.30 Hz
 GB 0
 PC 1.00





Current Data Parameters
NAME MrImaz
EXPNO 343
PROCNO 1

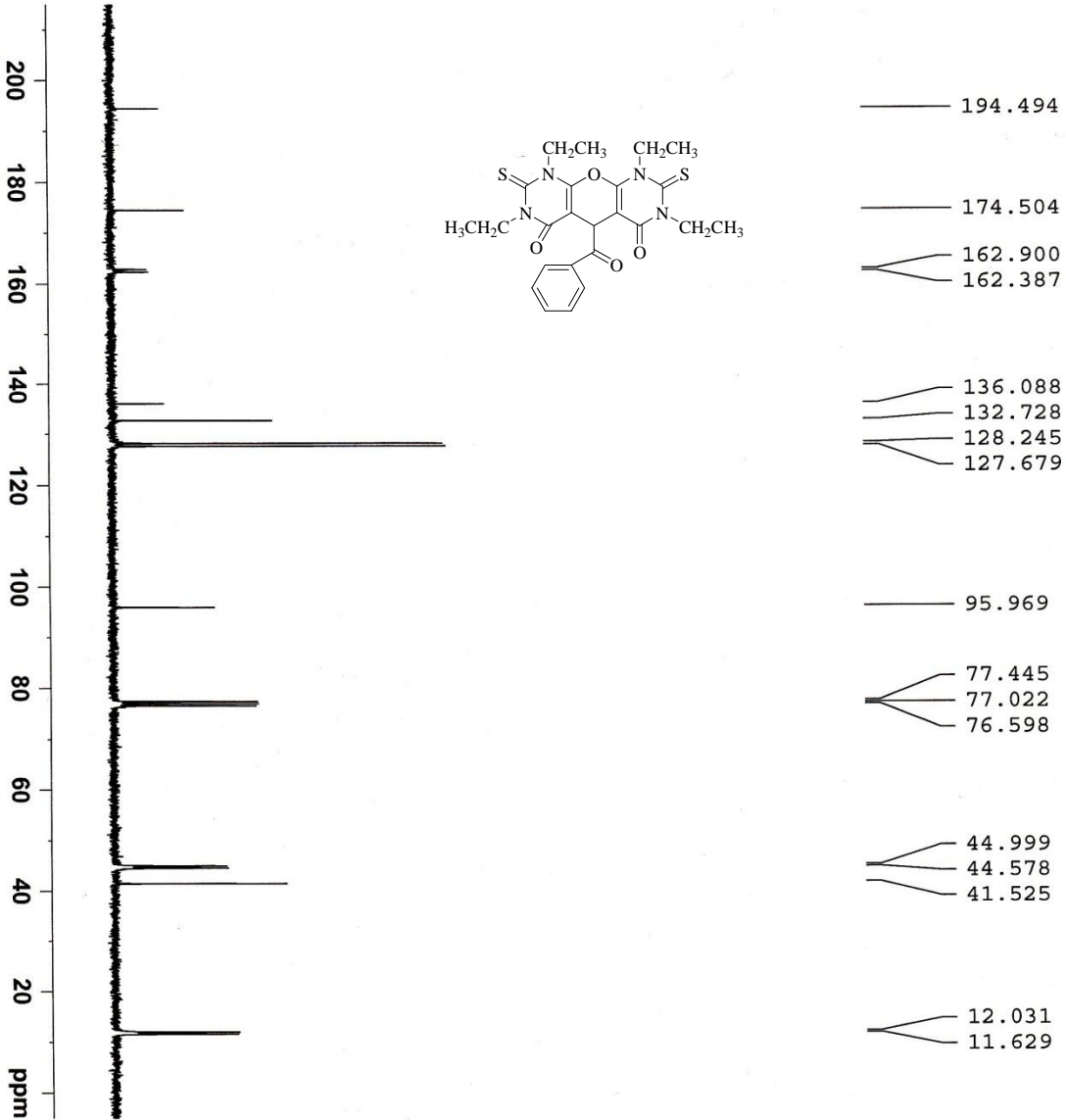
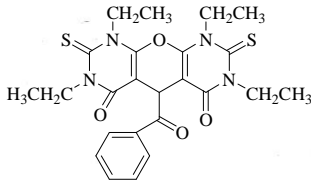
F2 - Acquisition Parameters

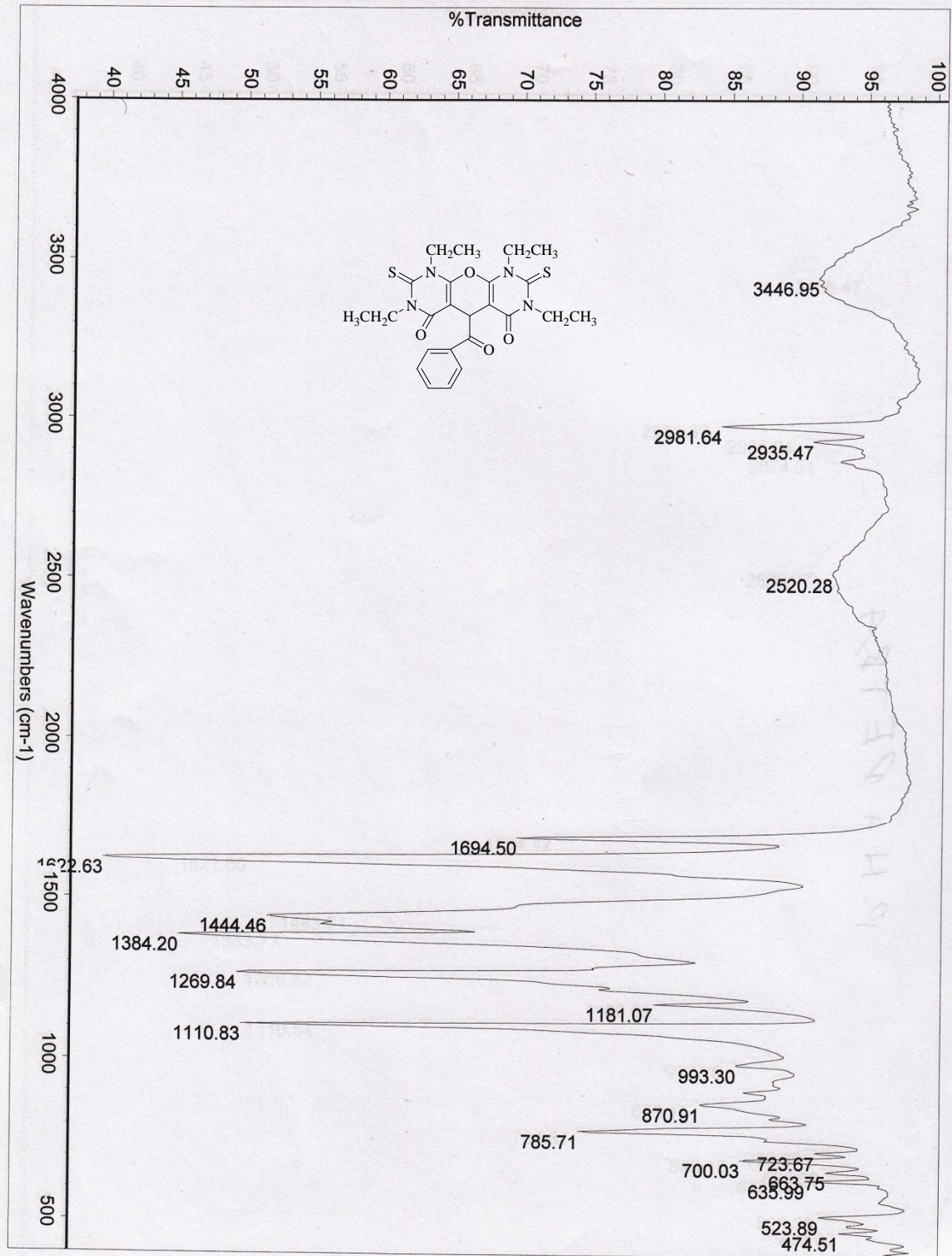
Date_ 20111214
Time_ 17.05
INSTRUM spect
PROBHD 5 mm BBO BB-1H
PULPROG zgpg
TD 65536
SOLVENT CDCl3
NS 500
DS 0
SWH 17985.611 Hz
FIDRES 0.274439 Hz
AQ 1.8219508 sec
RG 4096
DM 27.800 usec
DE 6.00 usec
TE 673.2 K
D1 2.0000000 sec
d11 0.0300000 sec
MCREST 0.0000000 sec
MCWRK 0.01500000 sec

==== CHANNEL f1 =====
NUC1 13C
PI 6.30 usec
PL1 -5.00 dB
SFO1 75.4752953 MHz

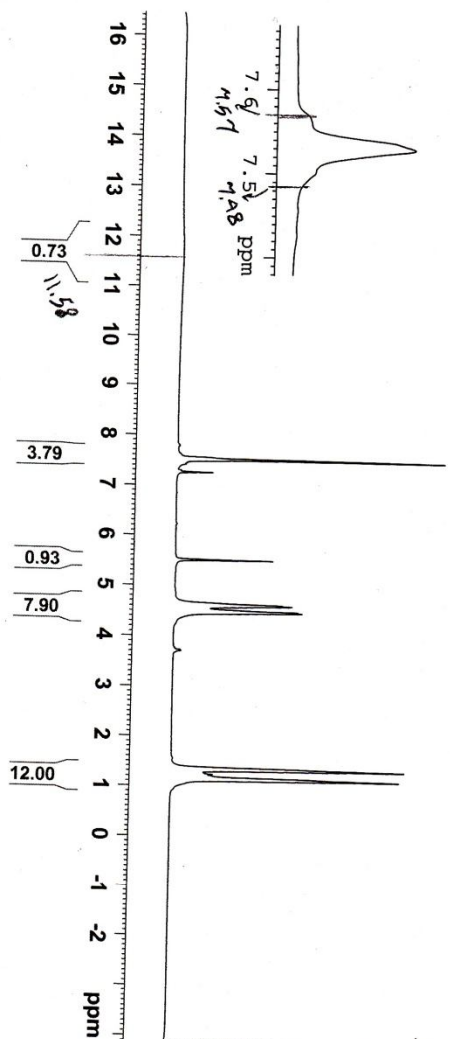
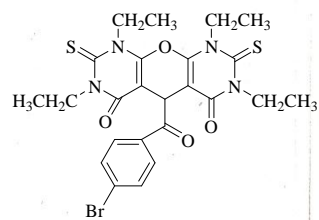
==== CHANNEL f2 =====
CPDPRG2 waltz16
NUC2 1H
PCPD2 77.00 usec
PL2 -3.00 dB
PL12 17.00 dB
PL13 17.00 dB
SFO2 300.1312005 MHz

F2 - Processing parameters
SI 32768
SF 75.4677490 MHz
WDW EM
SSB 0
LB 1.00 Hz
GB 0
PC 1.40





Spectra of compound **1b** :



- 7.531
- 7.269
- 5.524
- 4.616
- 4.505
- 4.484
- 1.353
- 1.268
- 1.245
- 1.155

Current Data Parameters
 NAME rbf1a3
 EXPNO 185
 PROCNO 1



F2 - Acquisition Parameters
 Date_ 20111225
 Time_ 14.31
 INSTRUM spect
 PROBHID 5 mm BBO BB-1H
 PULPROG zgpg30
 TD 32768
 SOLVENT CDCl3
 NS 8
 DS 8
 SWH 6172.839 Hz
 FIDRES 0.189380 Hz
 AQ 2.6542580 sec
 RG 31.036
 DW 81.000 usec
 DE 6.00 usec
 TE 294.0 K
 D1 1.00000000 sec
 MCREST 0.00000000 sec
 MCWRK 0.01500000 sec

==== CHANNEL f1 =====
 NUCL1 1H
 P1 8.20 usec
 PL1 -3.00 dB
 SFO1 300.1318534 MHz

F2 - Processing parameters
 SI 32768
 SF 300.1306000 MHz
 WDW EM
 SSB EN
 LB 0.30 Hz
 GB 0
 PC 1.00



Current Data Parameters
 NAME fadt1e1
 EXPRNO 186
 PROCNO 1

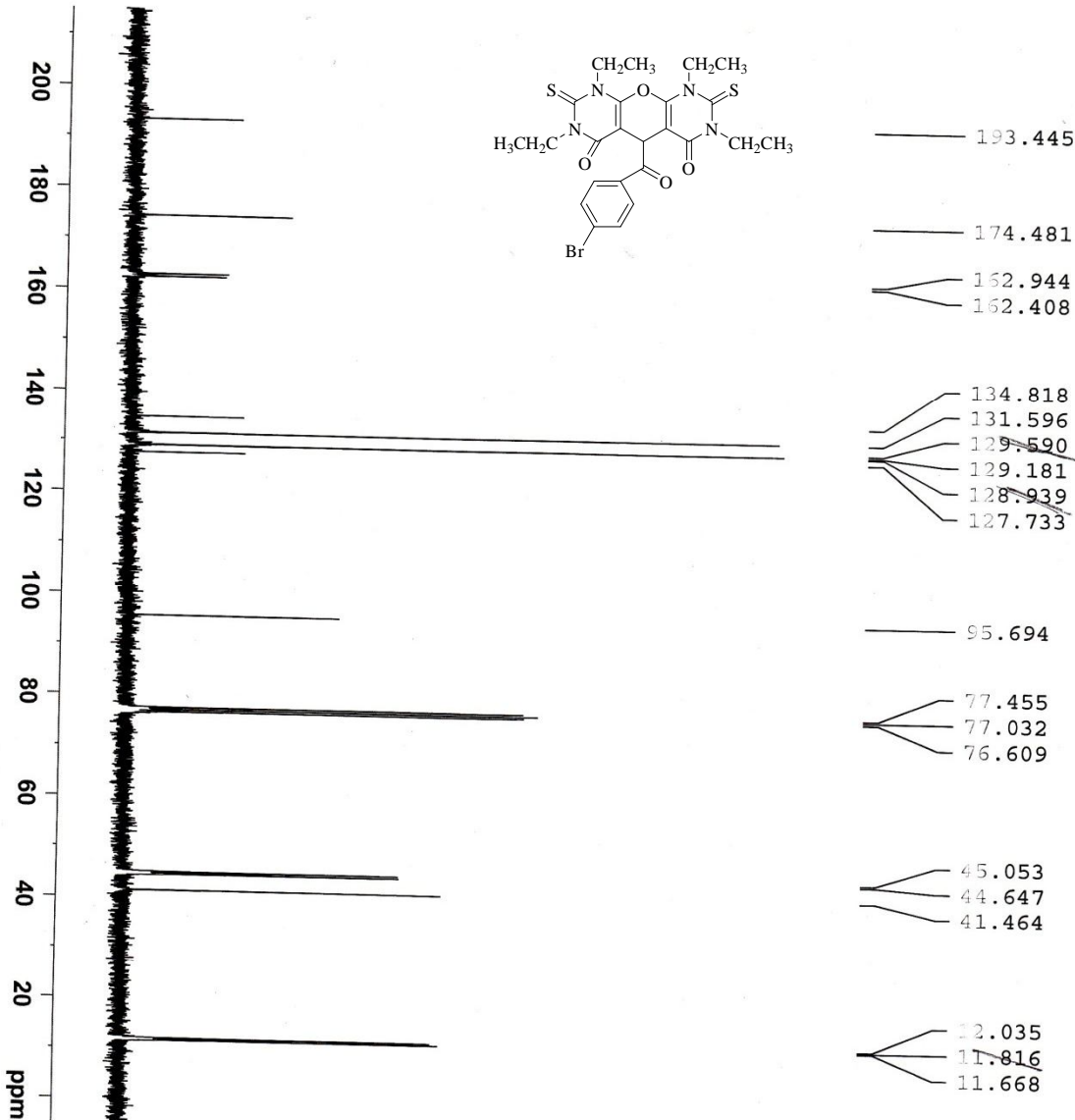
F2 - Acquisition Parameters

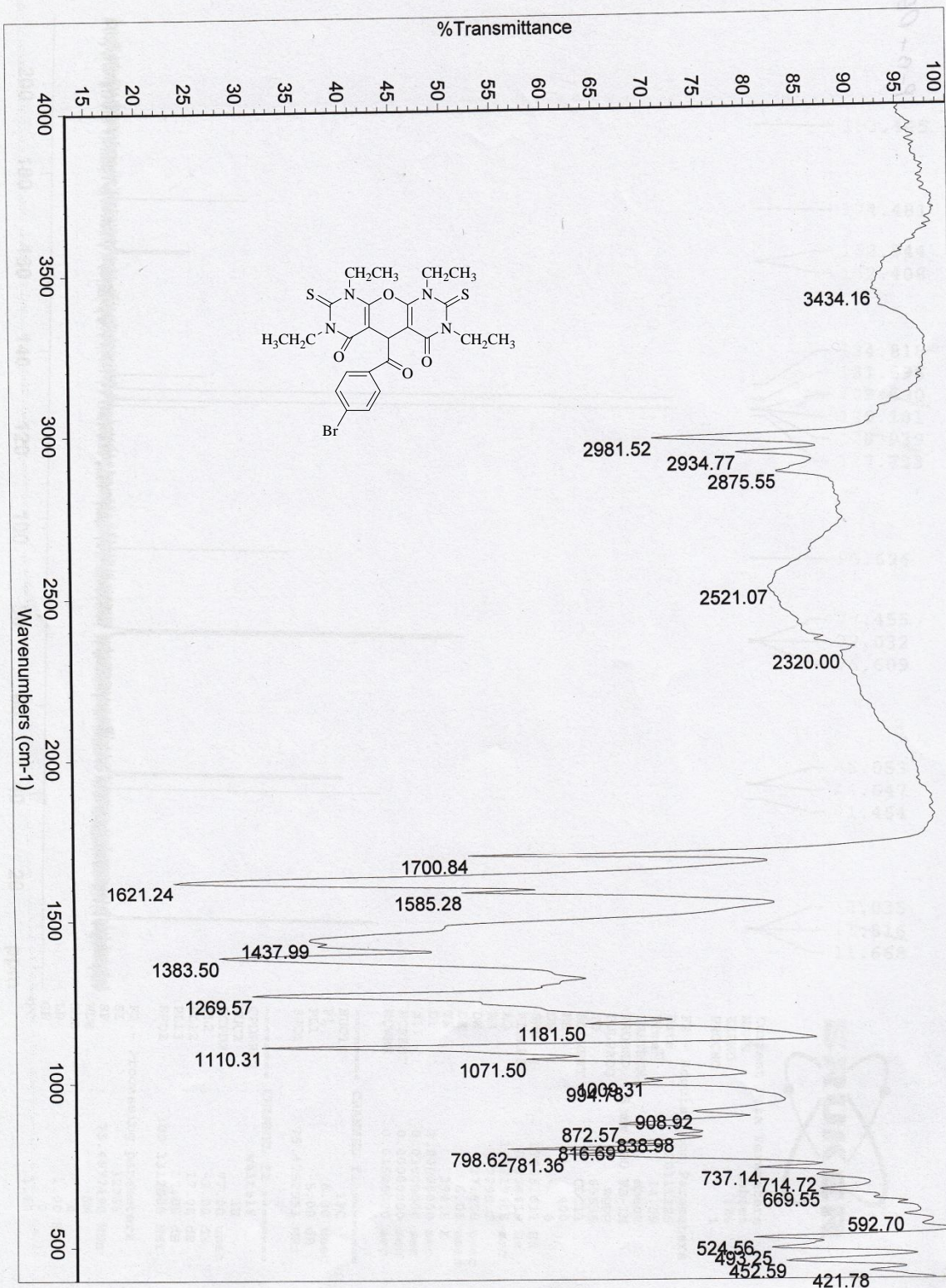
Date_ 20111225
 Time 14.59
 INSTRUM spect
 PROBHD 5 mm BBO BB-1H
 PULPROG zgpg30
 TD 65536
 SOLVENT CDCl3
 NS 400
 DS 0
 SWH 17985.611 Hz
 FIDRES 0.274439 Hz
 AQ 1.8219508 sec
 RG 7298.2
 DW 27.800 usec
 DE 6.00 usec
 TE 294.5 K
 D1 2.00000000 sec
 d11 0.03000000 sec
 MCREST 0.00000000 sec
 MCPRK 0.01500000 sec

==== CHANNEL f1 =====
 NUCL 13C
 P1 6.30 usec
 PL1 -5.00 dB
 SFO1 75.4752953 MHz

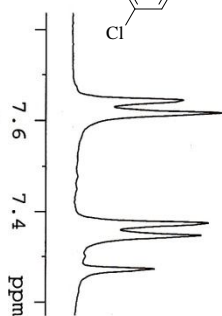
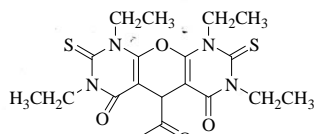
==== CHANNEL f2 =====
 CPDPRG2 waltz16
 NUCL 1H
 PCPPD2 77.00 usec
 PL2 -3.00 dB
 PL12 17.00 dB
 PL13 17.00 dB
 SFO2 300.1312005 MHz

F2 - Processing parameters
 SI 32768
 SF 75.4677490 MHz
 WDW EM
 SSB 0
 LB 1.00 Hz
 GB 0
 PC 1.40

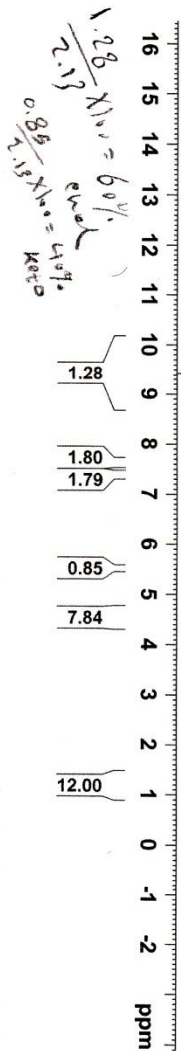
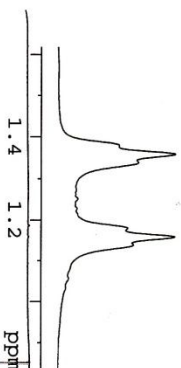
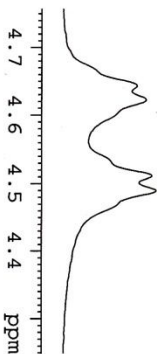




Spectra of compound 1c :



- 7.644
- 7.617
- 7.375
- 7.347
- 7.301
- 7.273
- 5.536
- 4.643
- 4.622
- 4.511
- 4.490
- 1.360
- 1.339
- 1.272
- 1.252
- 1.229
- 1.180
- 1.160
- 1.139
- 1.058



Current Data Parameters
 NAME rab1e1
 EXPNO 173
 PROCNO 1

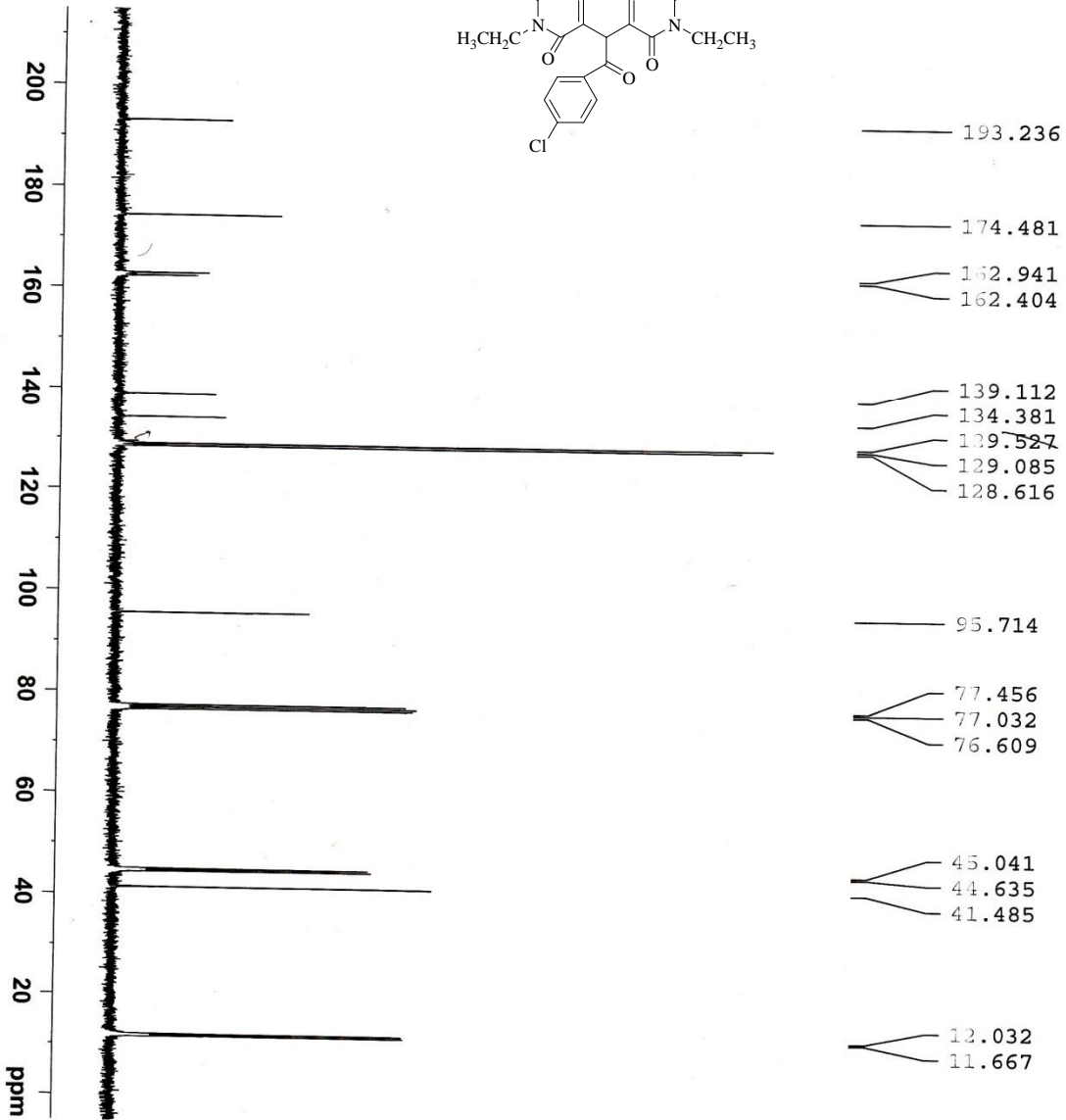
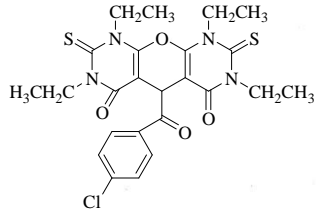
F2 - Acquisition Parameters
 Date_ 20111211
 Time 14.19

INSTRUM spect
 PROBHD 5 mm BBO BB-1H
 PULPROG zg30
 TD 32768
 SOLVENT CDCl3
 NS 10

DS 0
 SWH 6172.839 Hz
 FIDRES 0.188380 Hz
 AQ 2.6542580 sec
 RG 362
 DE 81.000 usec
 TE 293.6 K
 D1 1.00000000 sec
 MCREST 0.00000000 sec
 MCWRK 0.01500000 sec

==== CHANNEL f1 =====
 NUCL 1H
 P1 8.20 usec
 PL1 -3.00 dB
 SFO1 300.1318534 MHz

F2 - Processing parameters
 SI 32768
 SF 300.1300000 MHz
 WDM EM
 SSB 0
 LB 0.30 Hz
 GB 0
 PC 1.00



Current Data Parameters
 NAME M171maz
 EXPNO 350
 PROCNO 1



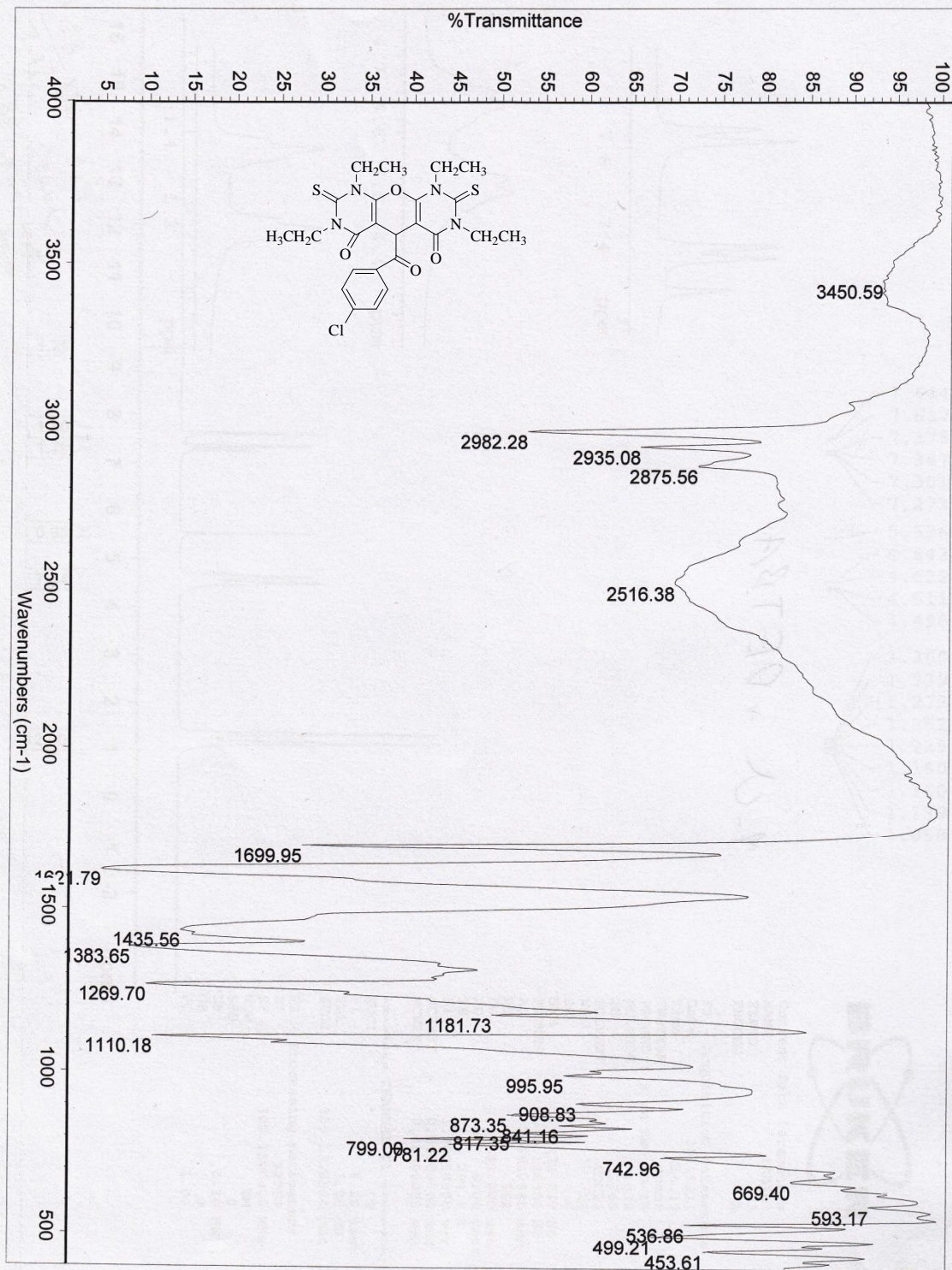
F2 - Acquisition Parameters

Date_ 20111225
 Time 13.51
 INSTRUM spect
 PROBHD 5 mm BBO BB-1H
 PULPROG zgpg30
 TD 65536
 SOLVENT CDCl3
 NS 500
 DS 0
 SWH 17985.611 Hz
 FIDRES 0.274439 Hz
 AQ 1.8219508 sec
 RG 4096
 DW 27.800 usec
 DE 6.00 usec
 TE 294.8 K
 D1 2.00000000 sec
 d11 0.03000000 sec
 MCREST 0.00000000 sec
 MCWK 0.01500000 sec

==== CHANNEL f1 =====
 NUC1 13C
 P1 6.30 usec
 PL1 -5.00 dB
 SFO1 75.4752953 MHz

==== CHANNEL f2 =====
 CPDPRG2 waltz16
 NUC2 1H
 PCPD2 77.00 usec
 PL2 -3.00 dB
 PL12 17.00 dB
 PL13 17.00 dB
 SFO2 300.1312005 MHz

F2 - Processing parameters
 SI 32768
 SF 75.4677490 MHz
 WDW EM
 SSB 0
 GB 0
 PC 1.00 Hz
 1.40



Spectra of compound **1d** :

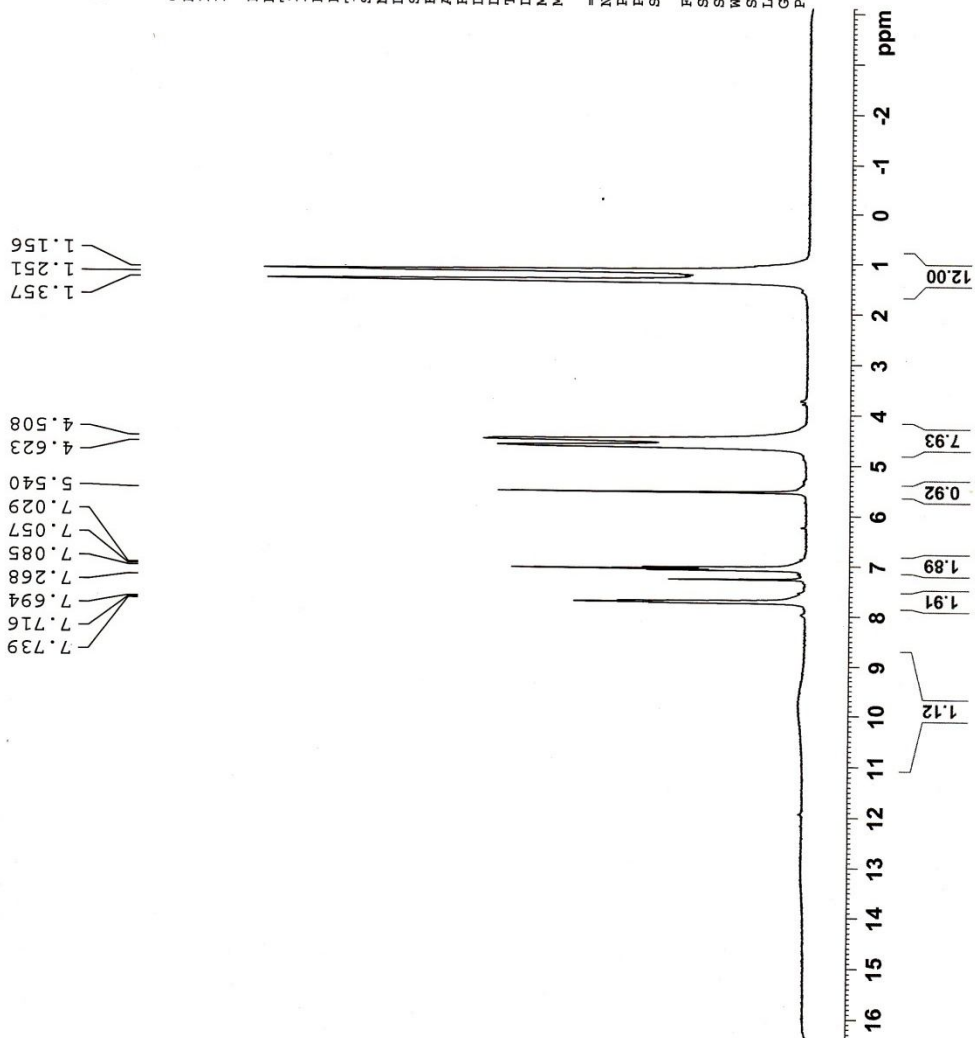
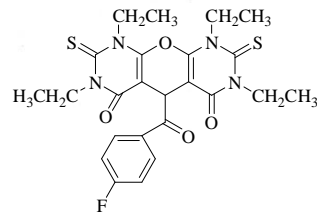


Current Data Parameters
 NAME rabiei
 EXPNO 159
 PROCNO 1

F2 - Acquisition Parameters
 Date_ 20111121
 Time_ 13.11
 INSTRUM spect
 PROBHD 5 mm BBO BB-1H
 PULPROG zg30
 TD 32768
 SOLVENT CDCl3
 NS 6
 DS 0
 SWH 6172.839 Hz
 FIDRES 0.168380 Hz
 AC 2.6542580 sec
 RG 362
 DW 81.000 usec
 DE 6.00 usec
 TE 296.1 K
 D1 1.00000000 sec
 MCREST 0.00000000 sec
 MCWEK 0.01500000 sec

==== CHANNEL f1 =====
 NUC1 1H
 P1 8.20 usec
 PL1 -3.00 dB
 SF01 300.1318534 MHz

F2 - Processing parameters
 SI 32768
 SF 300.1300008 MHz
 WDW EM
 SSB 0
 LB 0.30 Hz
 GB 0
 PC 1.00





Current Data Parameters
NAME Mirnaz
PROCNO 341

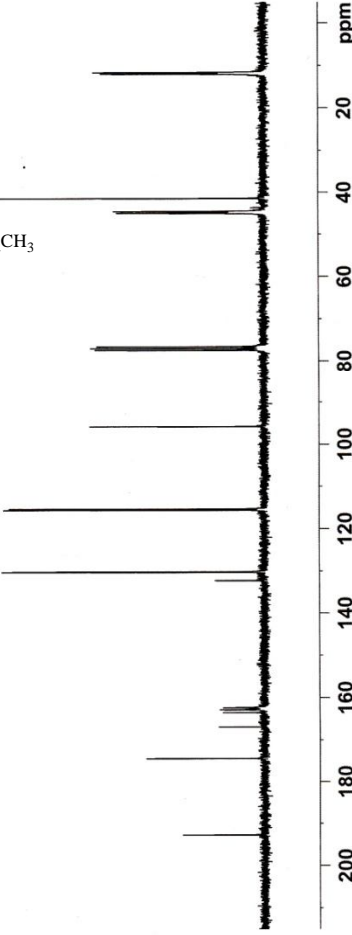
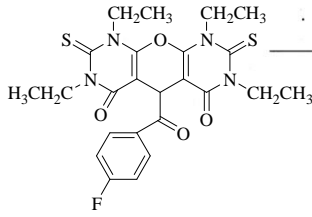
F2 - Acquisition Parameters
Date 20111220
Time 8.45
INSTRUM spect
PROBHD 5 mm BBO BB-1H
PULPROG zgpg
PROG 6299
SOLVENT CDCl3
NS 500
DS 0
SWH 17985.611 Hz
FIDRES 0.274439 Hz
AQ 1.8219508 sec
RG 4096
DW 27.800 usec
TE 296.3 K
D1 2.0000000 sec
d11 0.0300000 sec
MCREST 0.0000000 sec
MCWREK 0.0150000 sec

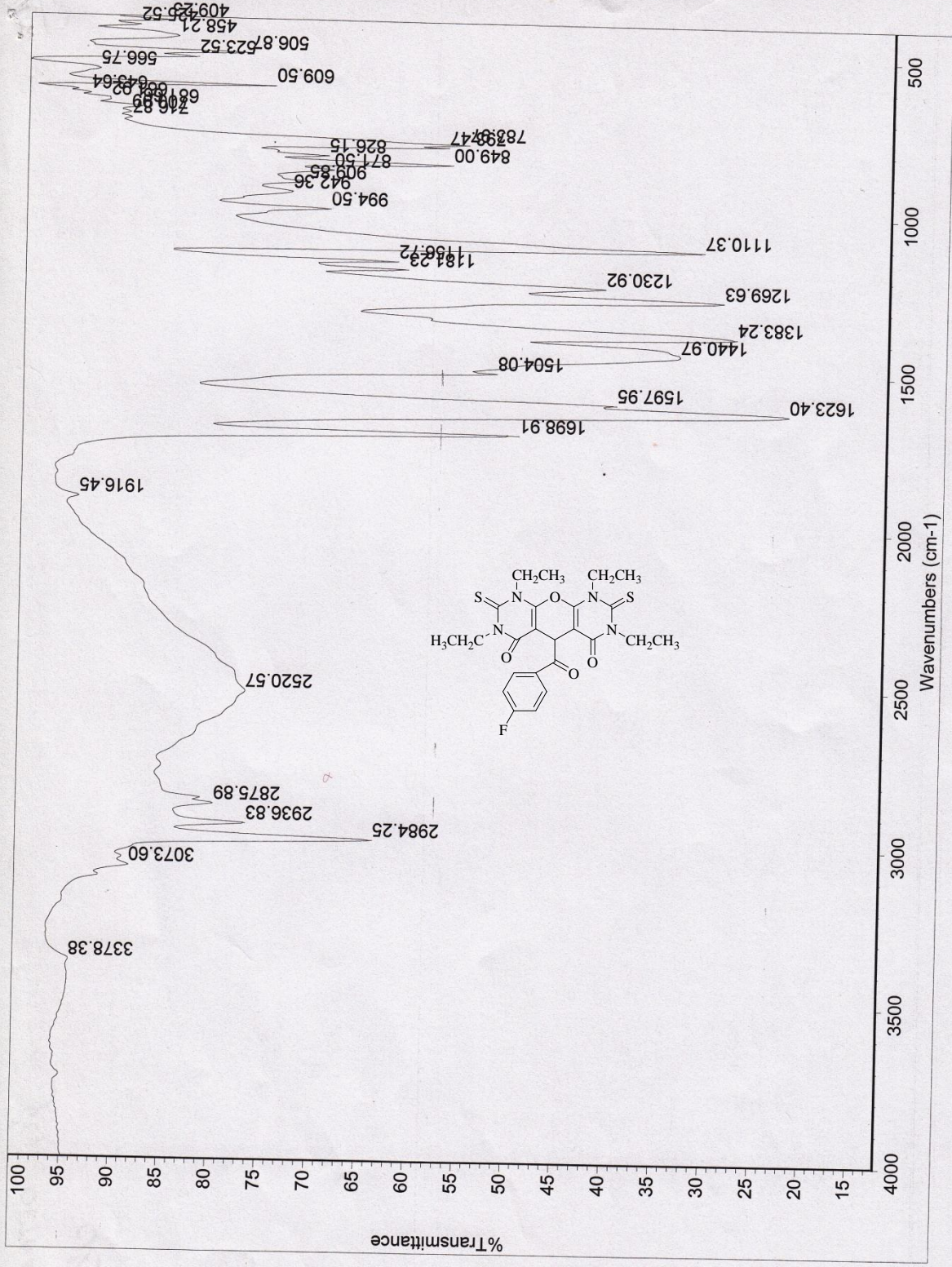
=====
CHANNEL f1
NUC1 13C
PL1 6.30 usec
PL2 -5.00 dB
SFO1 75.4752953 MHz

=====
CHANNEL f2
CFDPG2 waltz16
NUC2 1H
PCPD2 77.00 usec
PL2 1.00 dB
PL3 17.00 dB
PL13 17.00 dB
SFO2 300.1312005 MHz

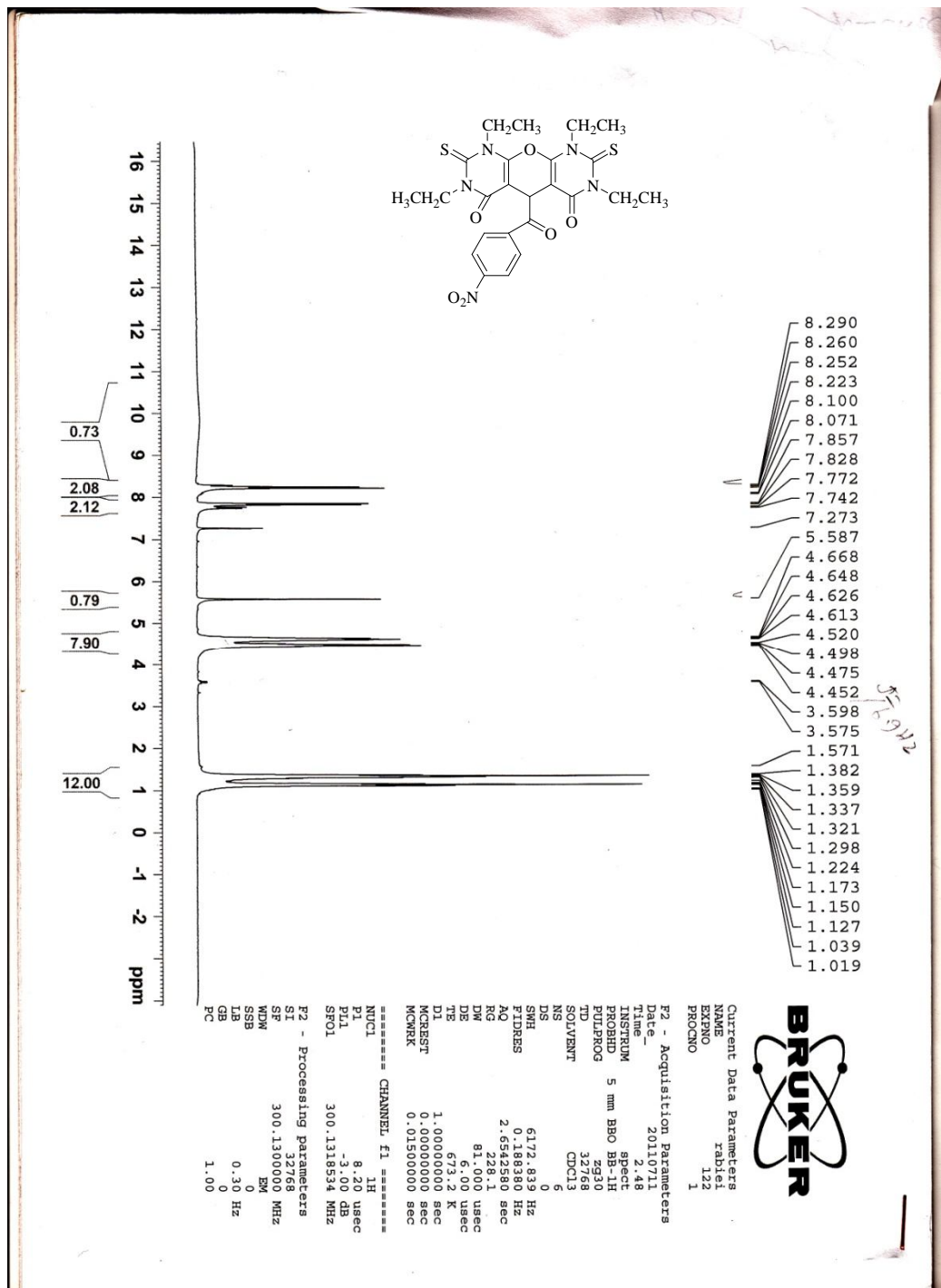
F2 - Processing parameters
SI 32768
SF 75.4677490 MHz
WDW EM
SSB 0
GB 1.00 Hz
PC 1.40

192.836
174.490
166.958
163.580
162.917
162.422
132.228
132.286
130.331
130.210
115.632
115.341
95.826
77.454
77.031
76.608
45.021
44.619
43.702
41.461
12.021
11.674





Spectra of compound **1e** :





Current Data Parameters
NAME rabiei
EXPNO 152
PROCNO 1

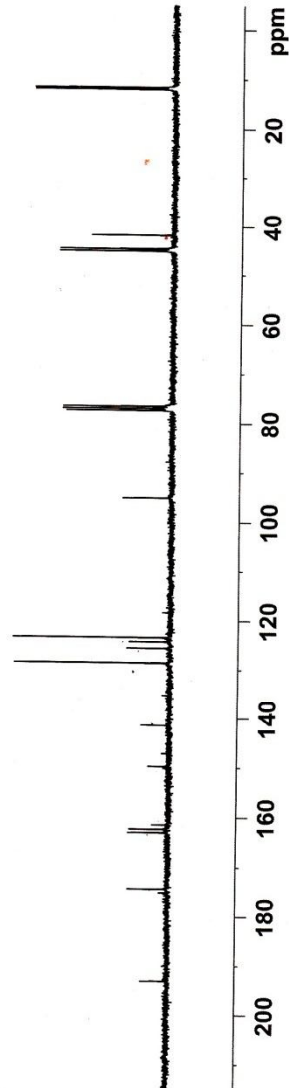
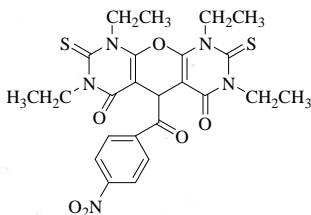
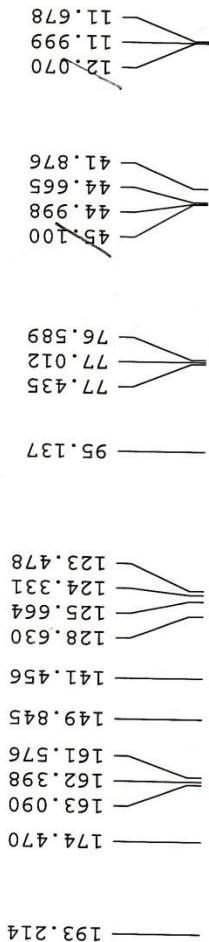
F2 - Acquisition Parameters

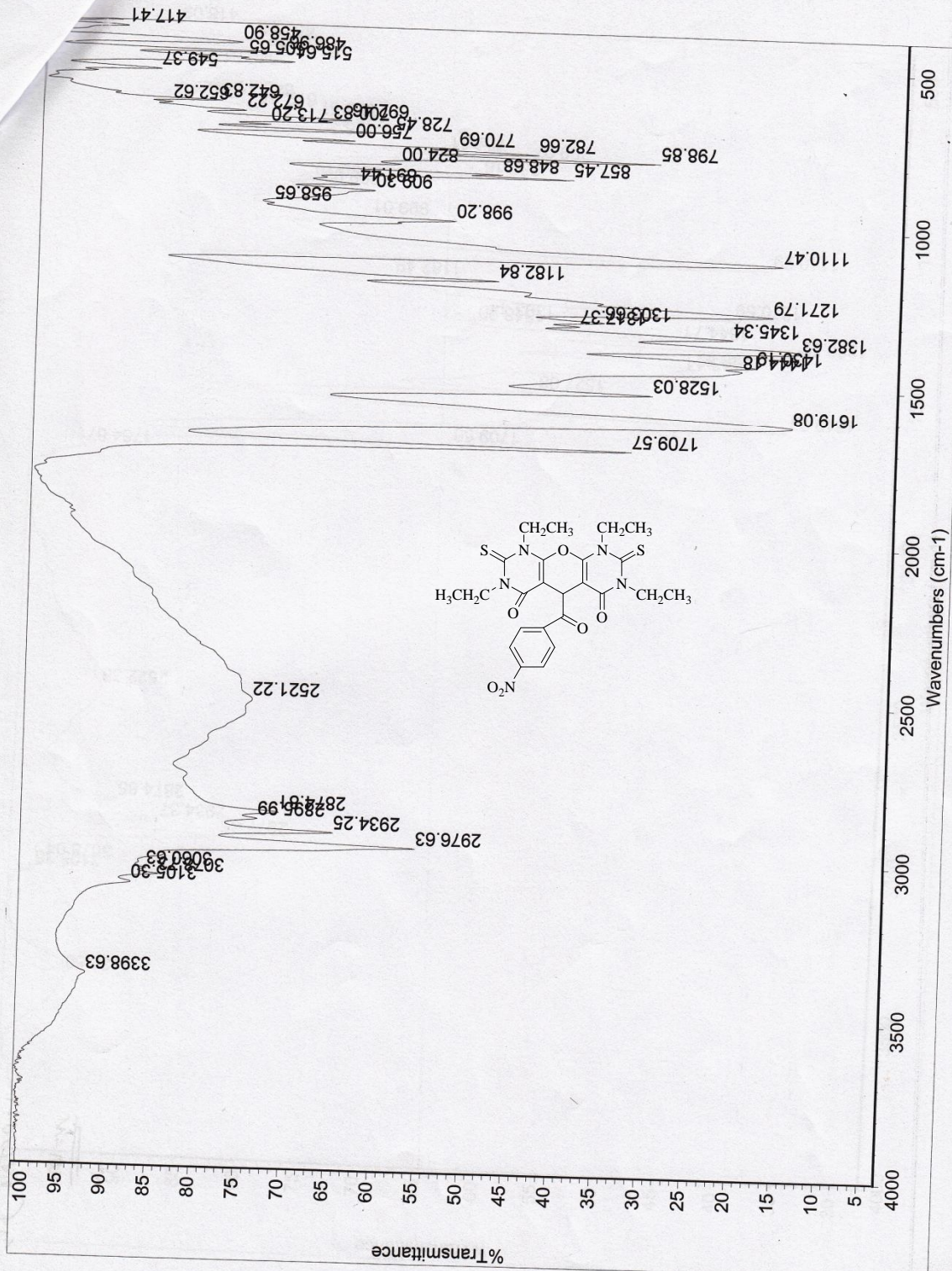
Date_ 2011023
Time_ 14.11
INSTRUM spect
PROBHD 5 mm BBO BB-LH
PULPROG zgpg
TD 65536
SOLVENT CDCl3
NS 500
DS 0
SWH 17985.611 Hz
FIDRES 0.274439 Hz
AQ 1.8219508 sec
RG 6502
DM 27.800 usec
DE 6.00 usec
TE 296.1 K
D1 2.0000000 sec
d11 0.0300000 sec
MCREST 0.0000000 sec
MCWRK 0.0150000 sec

=====
CHANNEL f1
NUC1 13C
P1 6.30 usec
PL1 -5.00 dB
SF01 75.4752953 MHz

=====
CHANNEL f2
CPDPRG2 waltz16
NUC2 1H
PCPD2 77.00 usec
PL2 -3.00 dB
PL12 17.00 dB
PL13 17.00 dB
SFO2 300.1312005 MHz

F2 - Processing parameters
SI 32768
SF 75.4677490 MHz
WDW EM
SSB 0
LB 1.00 Hz
GB 0
PC 1.40





Spectra of compound **1f** :

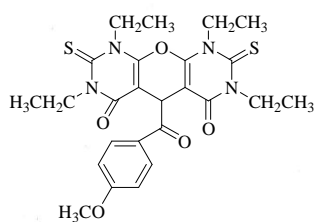


Current Data Parameters
 Name: 1ab1a
 ExpNo: 160
 ProcNo: 1

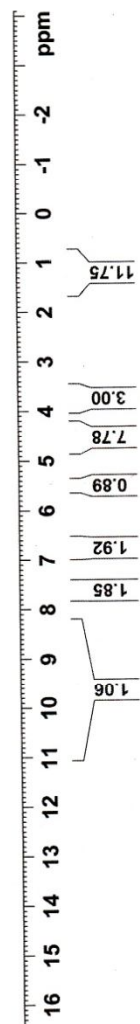
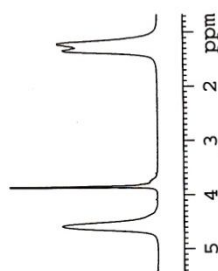
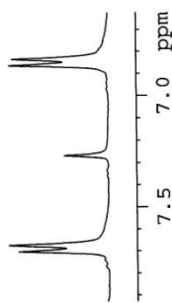
F2 - Acquisition Parameters
 Date_: 2011121
 Time: 1320
 INSTRUM: spect
 PROBHD: 5 mm BBO BB-1H
 FREQ: 32768
 PULPROG: zgpg30
 ID: 32768
 SOLVENT: CDCl3
 NS: 6
 DS: 4
 SWH: 6172.839 Hz
 FIDRES: 0.188380 Hz
 AQ: 2.6542580 sec
 RG: 362
 DM: 81.000 usec
 DE: 6.00 usec
 TE: 296.2 K
 D1: 1.00000000 sec
 MCREST: 0.00000000 sec
 MCWREK: 0.01500000 sec

===== CHANNEL f1 =====
 NUC1: 1H
 P1: 8.20 usec
 PL1: -3.00 dB
 SF01: 300.1318534 MHz

F2 - Processing parameters
 SI: 32768
 SF: 300.1300000 MHz
 EM: 0
 LB: 0.30 Hz
 GB: 0
 PC: 1.00



7.701
 7.672
 7.268
 6.862
 6.833
 5.558
 4.562
 3.844
 1.323
 1.194





Current Data Parameters
NAME rabia1
EXPNO 196
PROCNO 1

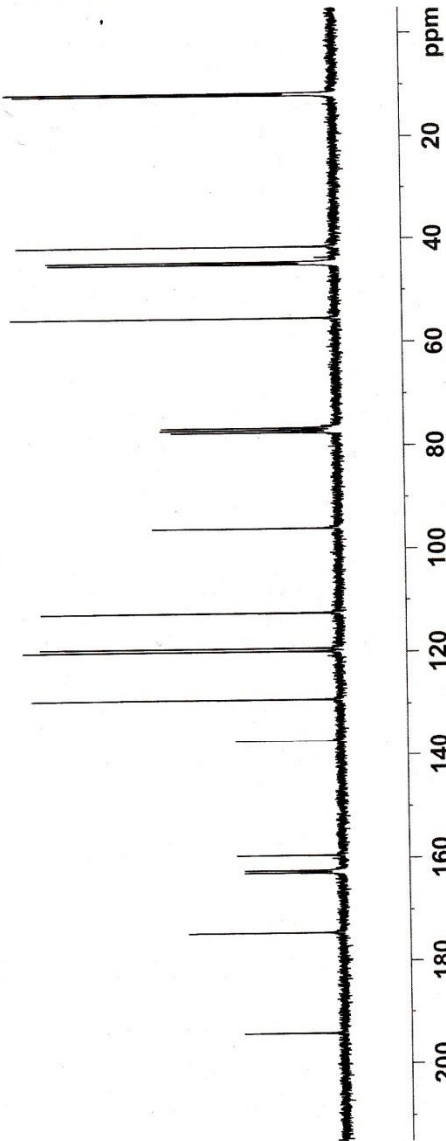
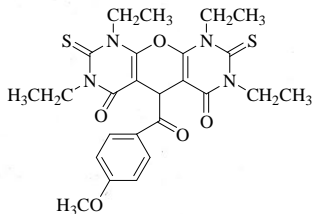
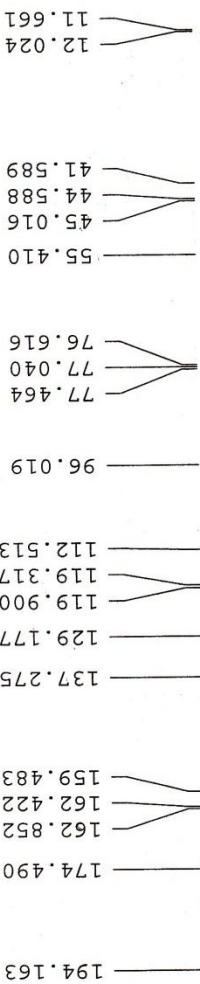
F2 - Acquisition Parameters

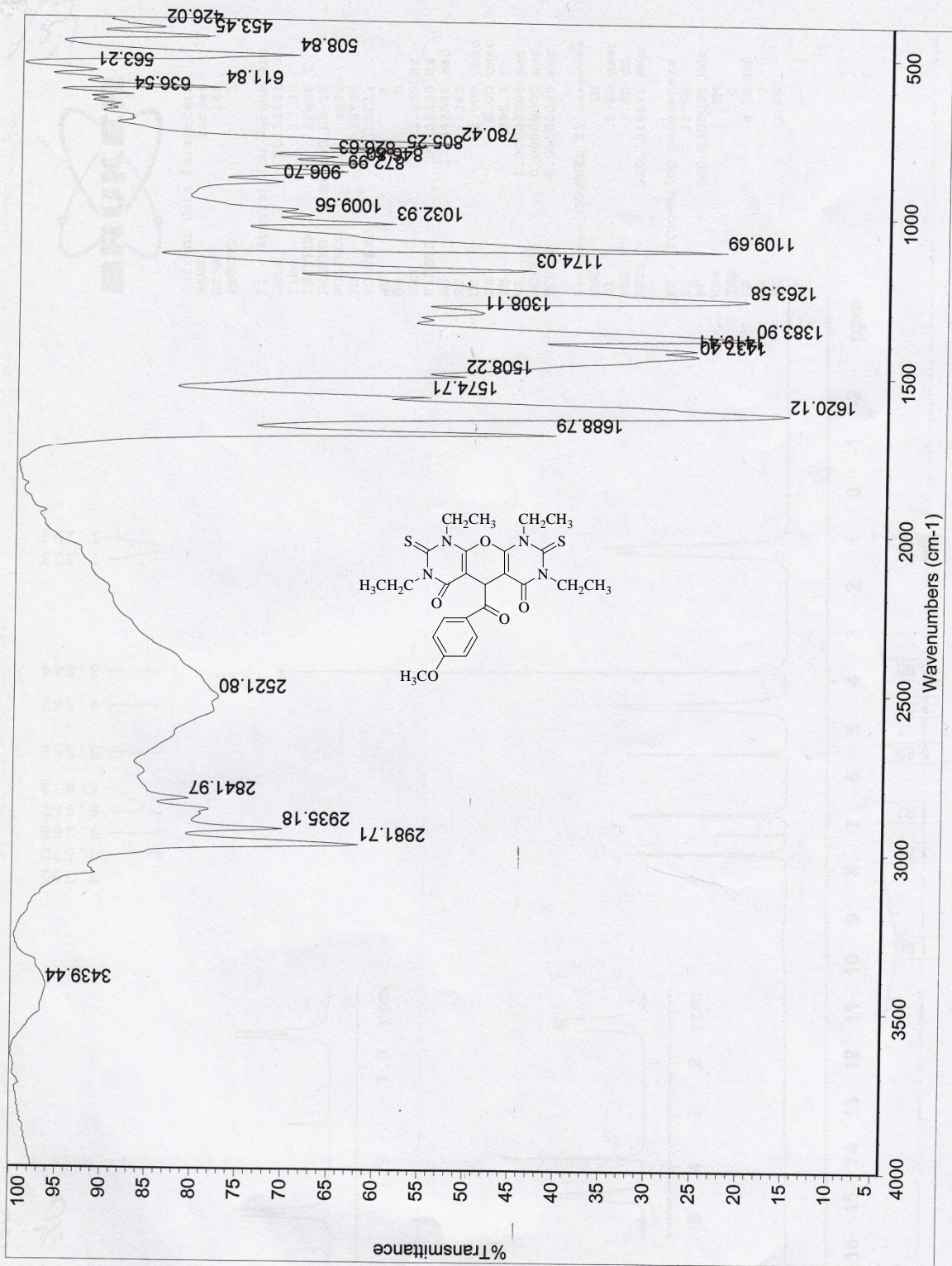
Date 20120104
Time 9.01
INSTRUM spect
PROBHD 5 mm BBO BB-1H
PULPROG zgpg
ID 65532
SOLVENT CDCl3
NS 500
DS 0
SWH 17985.611 Hz
FIDRES 0.274439 Hz
AQ 1.8219508 sec
RG 4096
DW 27.800 usec
DE 6.00 usec
TE 673.2 K
D1 2.00000000 sec
d11 0.03000000 sec
MCREST 0.00000000 sec
MCWRK 0.01500000 sec

==== CHANNEL f1 =====
NUC1 13C
P1 6.30 usec
PL1 -5.00 dB
SFO1 75.4752953 MHz

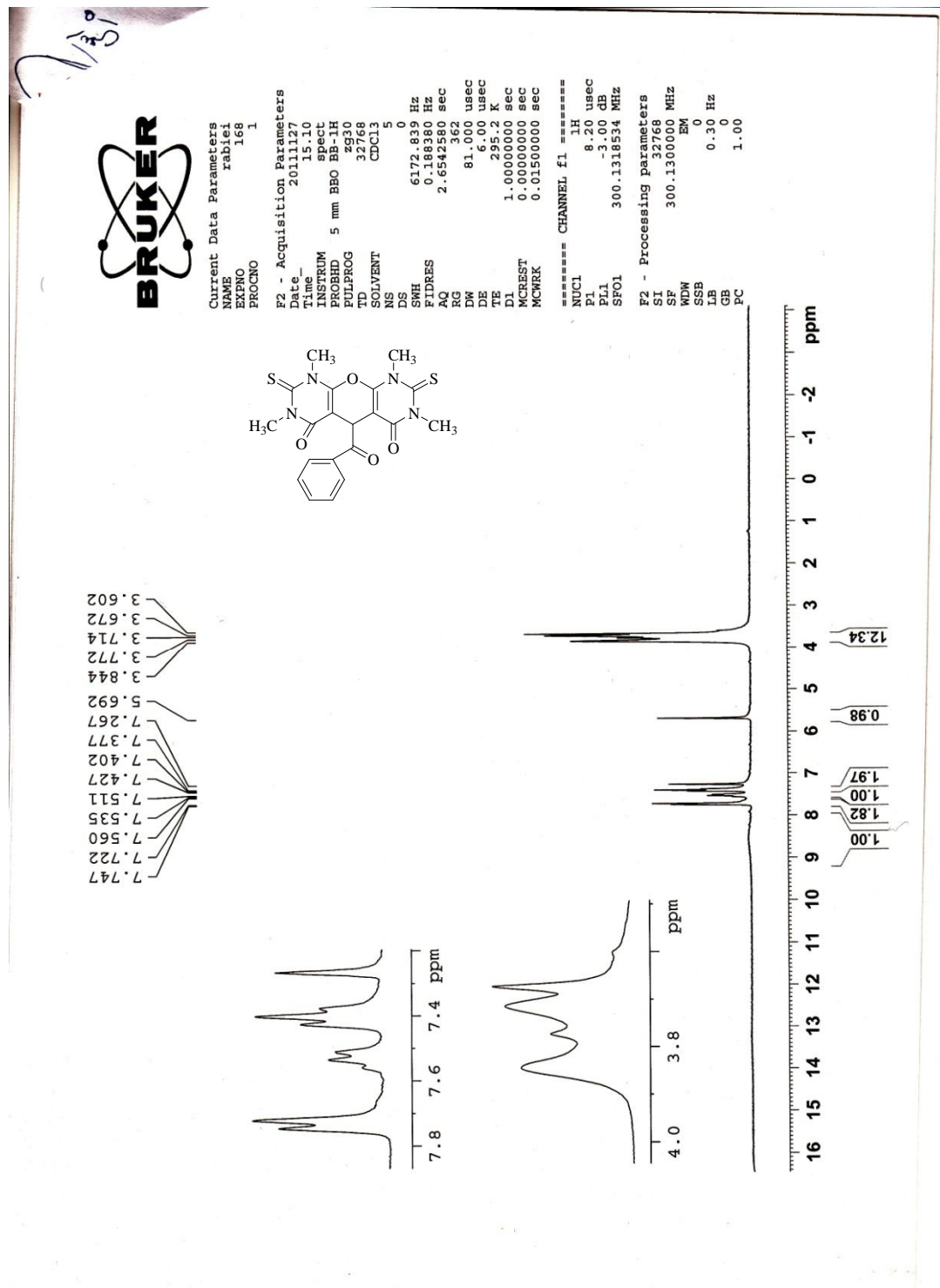
==== CHANNEL f2 =====
CPDPRG2 waltz16
NUC2 1H
PCPD2 77.00 usec
PL2 -3.00 dB
PLI2 17.00 dB
PLI3 17.00 dB
SFO2 300.1312005 MHz

F2 - Processing parameters
SI 32768
SF 75.4677490 MHz
WDW EM
SSB 0
LB 1.00 Hz
GB 0
PC 1.40





Spectra of compound **1k** :





Current Data Parameters
 NAME Mirimaz
 EXPNO 352
 PROCNO 1

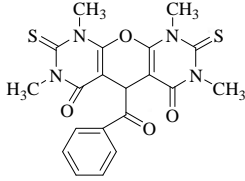
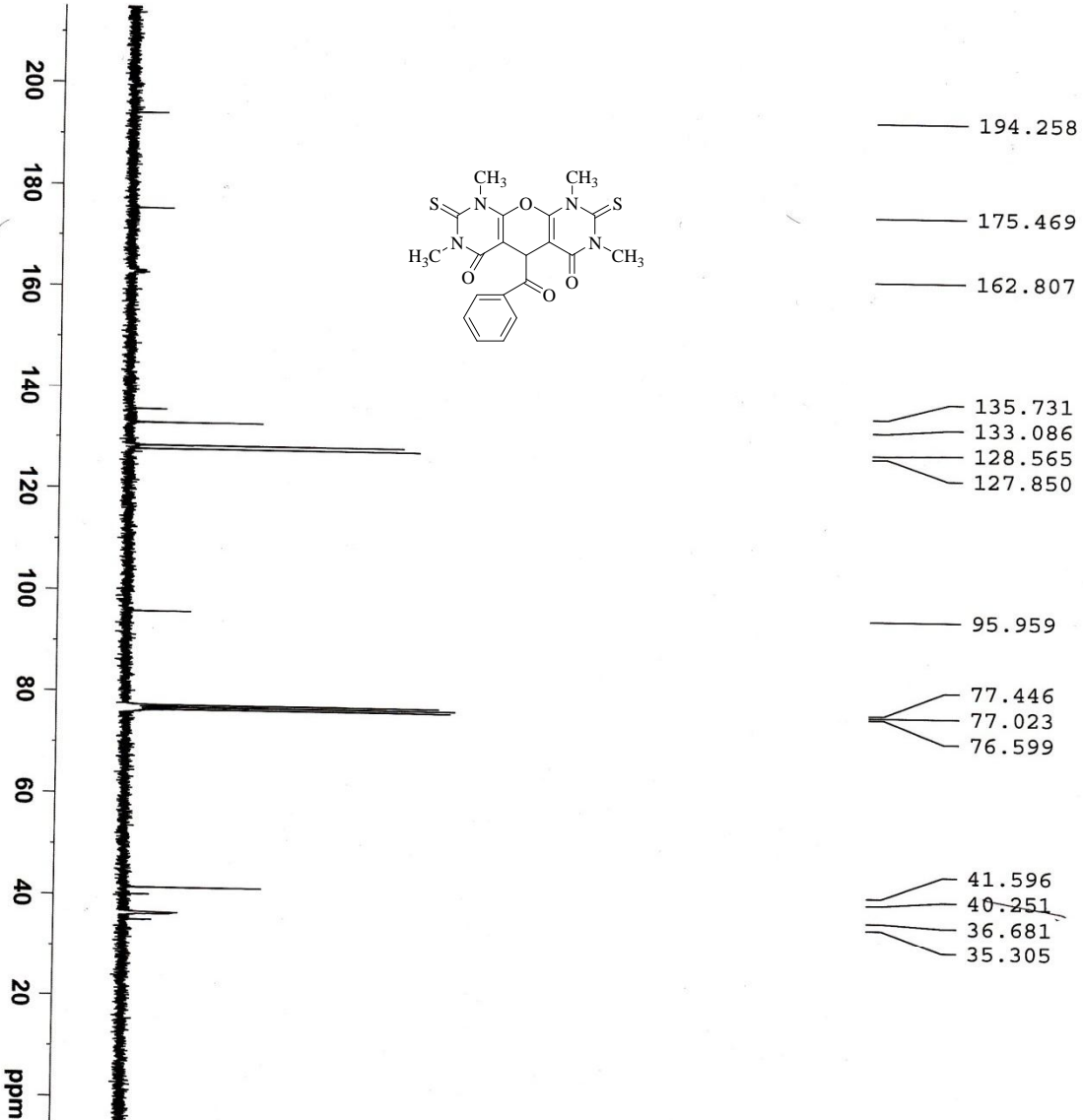
F2 - Acquisition Parameters

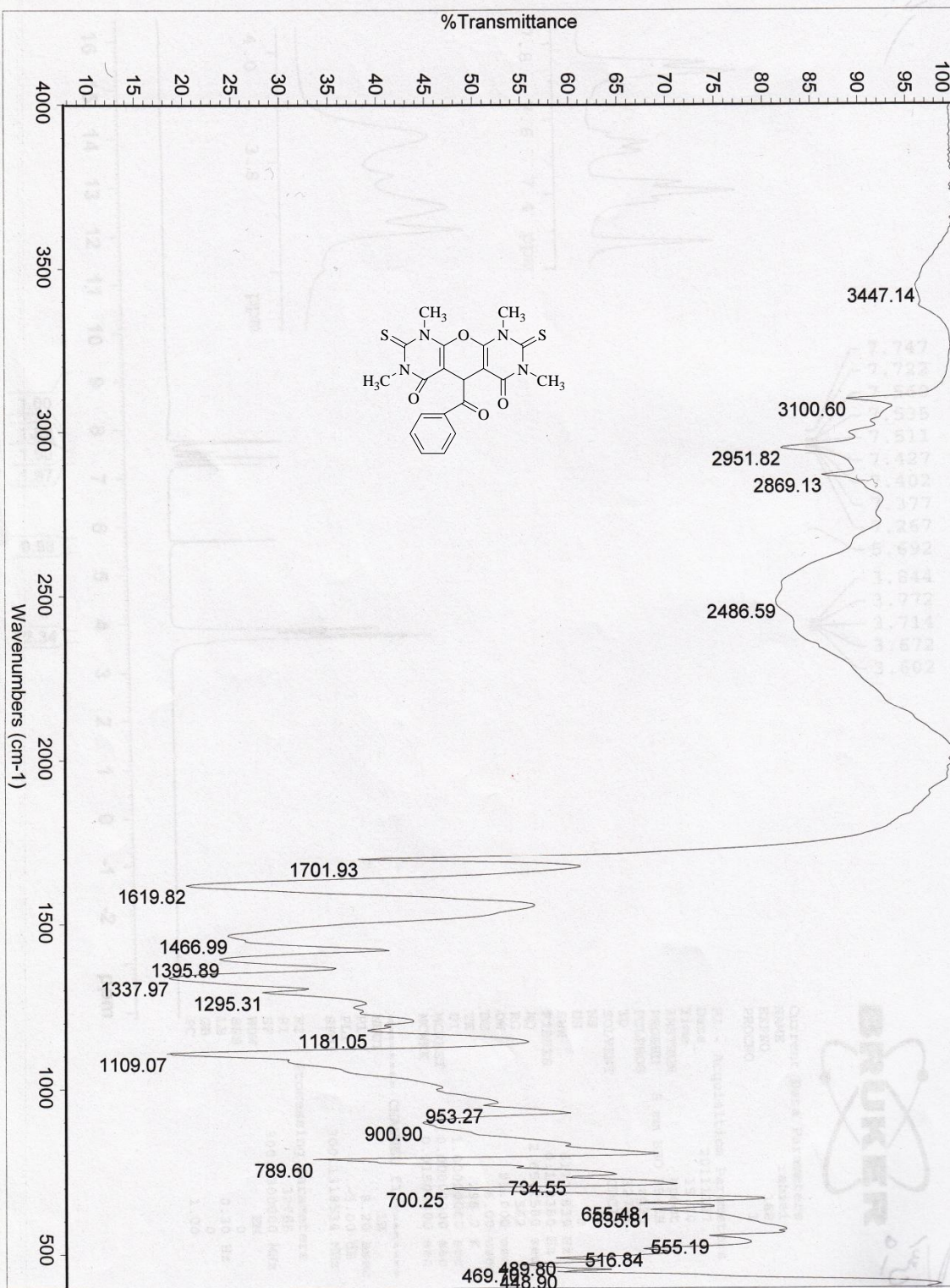
Date_ 20111226
 Time 13.12
 INSTRUM spect
 PROBHD 5 mm BBO BB-1H
 PULPROG zgpg30
 TD 65536
 SOLVENT CDCl3
 NS 500
 DS 0
 SWH 17985.611 Hz
 FIDRES 0.274439 Hz
 AQ 1.8219508 sec
 RG 6502
 DW 27.800 usec
 DE 6.00 usec
 TE 295.6 K
 D1 2.00000000 sec
 d11 0.03000000 sec
 MCREST 0.00000000 sec
 MCWRRK 0.01500000 sec

===== CHANNEL F1 =====
 NUC1 13C
 P1 6.30 usec
 PL1 -5.00 dB
 SFO1 75.4752953 MHz

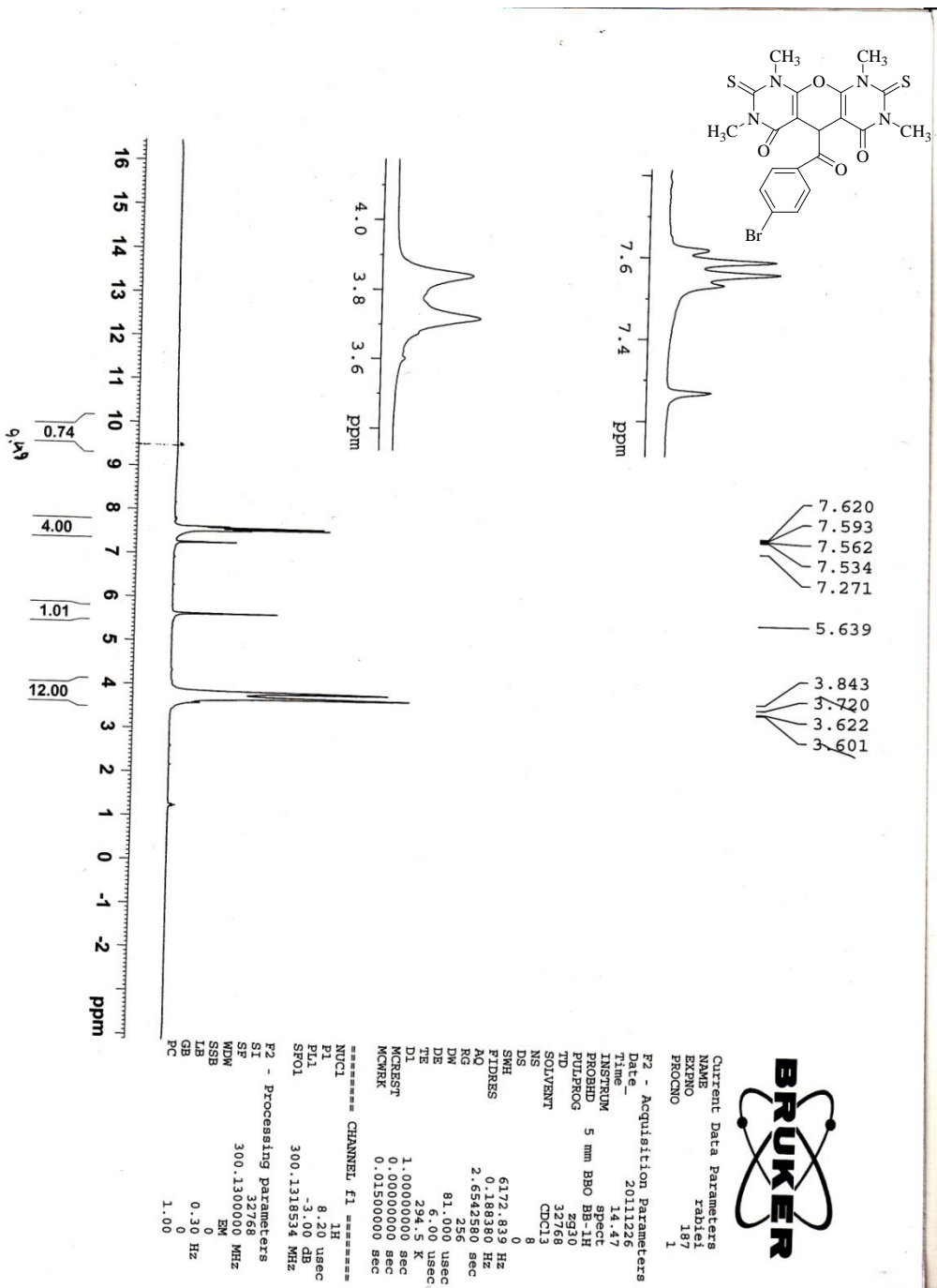
===== CHANNEL F2 =====
 CPDPRG2 waltz16
 NUC2 1H
 PCPD2 77.00 usec
 PL2 -3.00 dB
 PL12 17.00 dB
 PL13 17.00 dB
 SFO2 300.1312005 MHz

F2 - Processing parameters
 SI 32768
 SF 75.4677490 MHz
 WDW EM
 SSB 0
 GB 0
 PC 1.40





Spectra of compound **11** :





Current Data Parameters
NAME rab1e1
EXNO 188
PROCNO 1

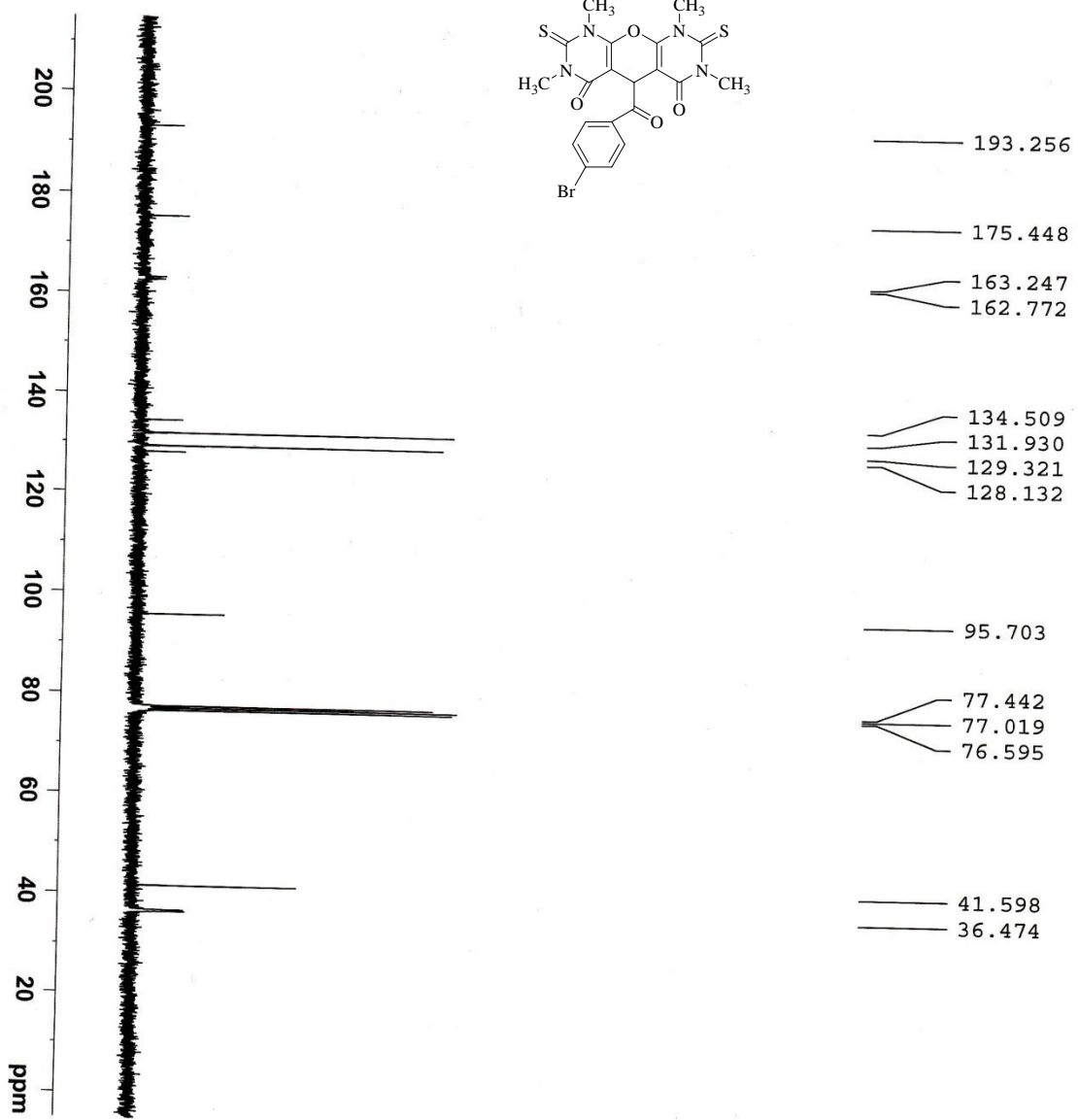
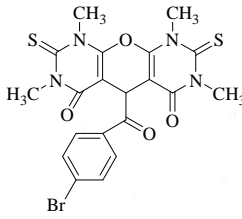
F2 - Acquisition Parameters

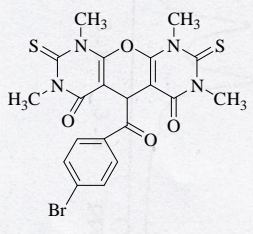
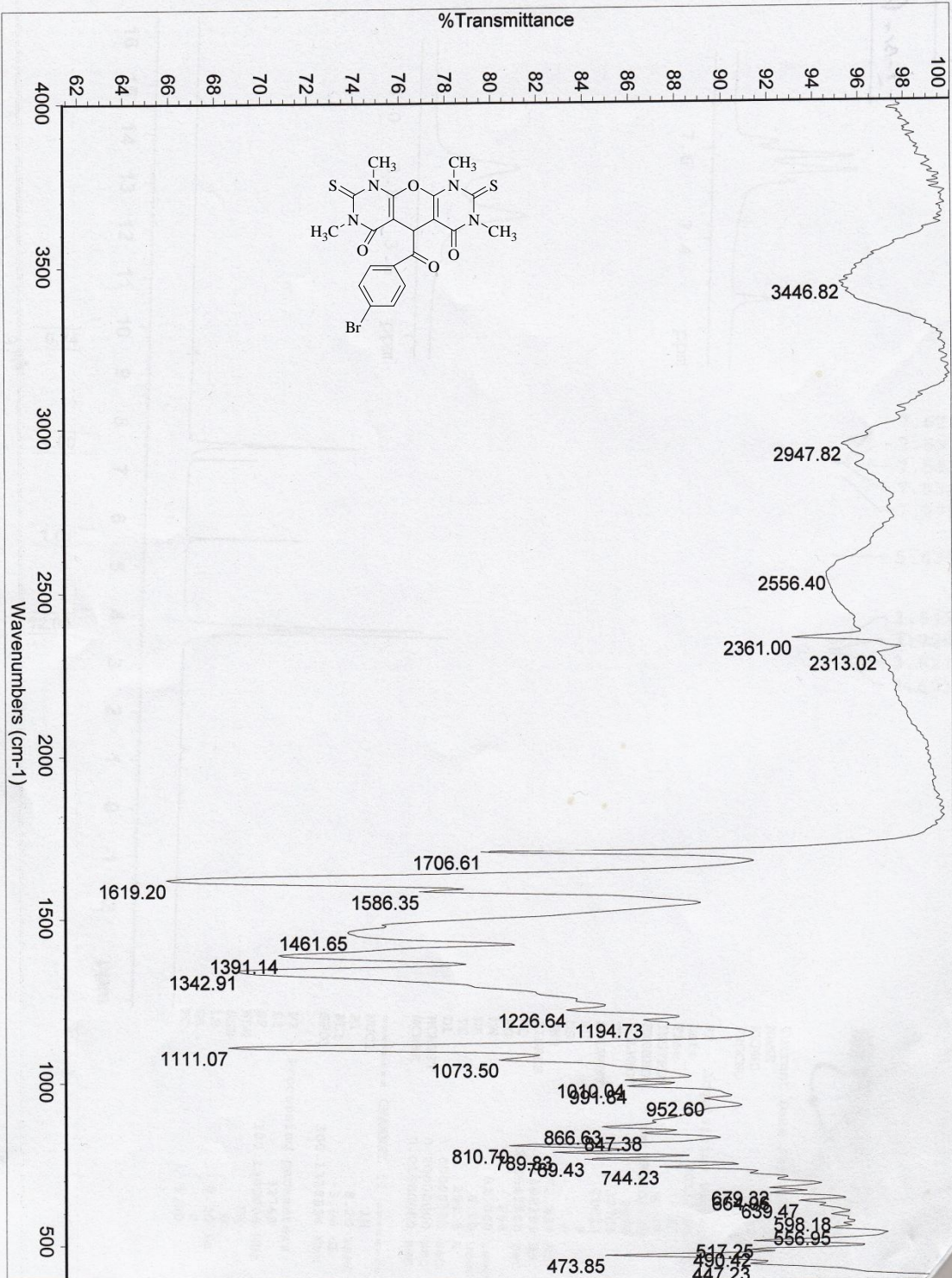
Date_ 20111227
Time_ 9.03
INSTRUM spect
PROBHD 5 mm BBO BB-1H
PULPROG zgpg
TD 65536
SOLVENT CDCl3
NS 400
DS 0
SWH 17985.611 Hz
FIDRES 0.274439 Hz
AQ 1.8219508 sec
RG 7238.2
DW 27.800 usec
DE 6.00 usec
TE 673.2 K
d1 2.00000000 sec
d11 0.03000000 sec
MCREST 0.00000000 sec
MCMARK 0.01500000 sec

==== CHANNEL f1 =====
NUC1 13C
P1 6.30 usec
PL1 -5.00 dB
SFO1 75.4752953 MHz

==== CHANNEL f2 =====
CPDPRG2 waltz16
NUC2 1H
PCPD2 77.00 usec
PL2 -3.00 dB
PL12 17.00 dB
PL13 17.00 dB
SFO2 300.1312005 MHz

F2 - Processing parameters
SI 32768
SF 75.4677490 MHz
WDW EM
SSB 0
LB 1.00 Hz
GB 0
PC 1.40





Spectra of compound **1n** :

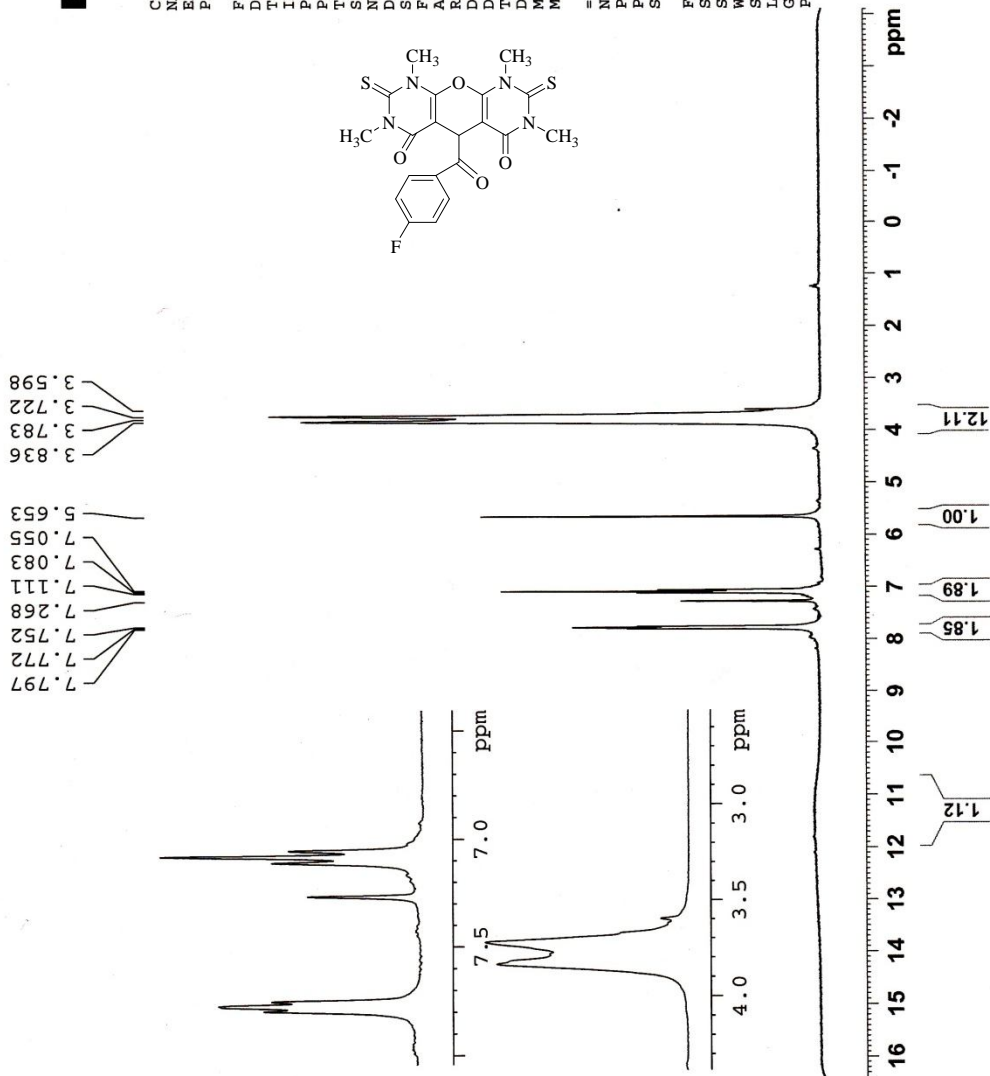
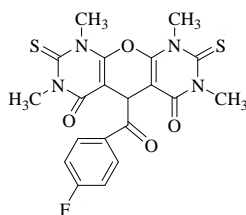


Current Data Parameters
 NAME Gabriel
 EXPNO 169
 PROCNO 1

F2 - Acquisition Parameters
 Date_ 2011128
 Time 16.06
 INSTRUM spect
 PROBHD 5 mm BBO BB-1H
 PULPROG zg30
 TD 32768
 SOLVENT CDCl3
 NS 5
 DS 0
 SWH 6172.839 Hz
 FIDRES 0.188380 Hz
 AQ 2.6542580 sec
 RG 362
 DW 81.000 usec
 DE 6.00 usec
 TE 295.5 K
 DI 1.0000000 sec
 MCRBST 0.0000000 sec
 MCWRK 0.01500000 sec

===== CHANNEL f1 =====
 NUC1 1H
 P1 8.20 usec
 PL1 -3.00 dB
 SFO1 300.1318534 MHz

F2 - Processing parameters
 SI 32768
 SF 300.1300000 MHz
 WDW EM
 SSB 0
 LB 0.30 Hz
 GB 0
 PC 1.00





Current Data Parameters
NAME Mirimaz
EXPNO 344
PROCNO 1

F2 - Acquisition Parameters

Date_ 20111219
Time 13.08
INSTRUM spect
PROBHD 5 mm BBO BB-1H
PULPROG zgpg
TD 65536
SOLVENT CDCl3
NS 500
DS 0
SWH 17985.611 Hz
FIDRES 0.274439 Hz
AQ 1.8219508 sec
RG 4096
DW 27.800 usec
DE 6.00 usec
TE 295.5 K
D1 2.00000000 sec
d11 0.03000000 sec
MCREST 0.00000000 sec
MCWRK 0.01500000 sec

=====
CHANNEL f1
NUC1 13C
P1 6.30 usec
PL1 -5.00 dB
SFO1 75.4752953 MHz

=====
CHANNEL f2
CPDPRG2 waltz16
NUC2 1H
PCPD2 77.00 usec
PL2 -3.00 dB
PL12 17.00 dB
PL13 17.00 dB
SFO2 300.1312005 MHz

F2 - Processing parameters
SI 32768
SF 75.4677490 MHz
WDW EM
SSB 0
LB 1.00 Hz
GB 0
PC 1.40

36.629
41.574

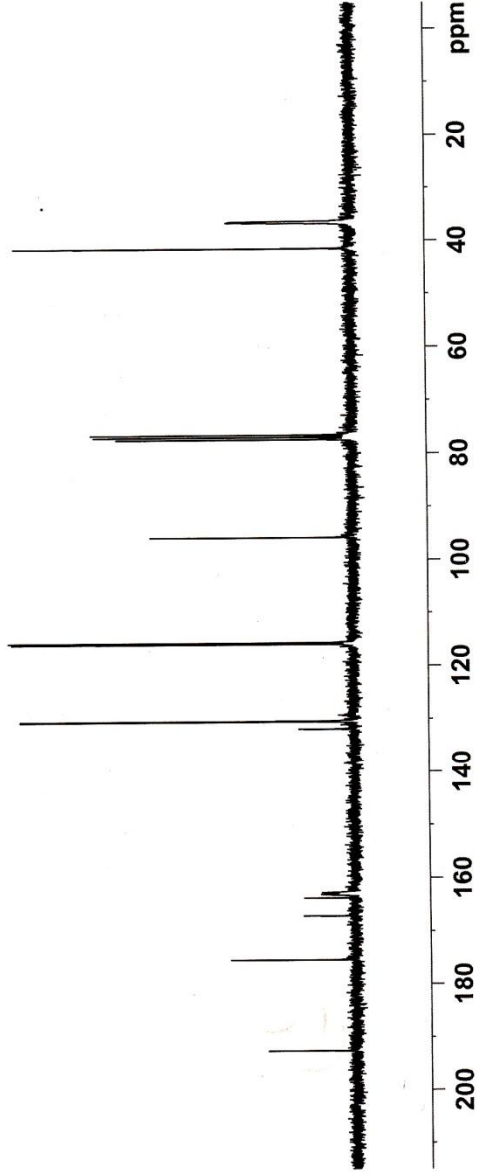
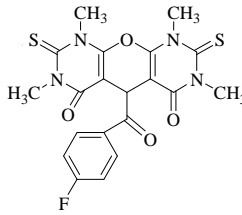
76.618
77.042
77.466

95.840

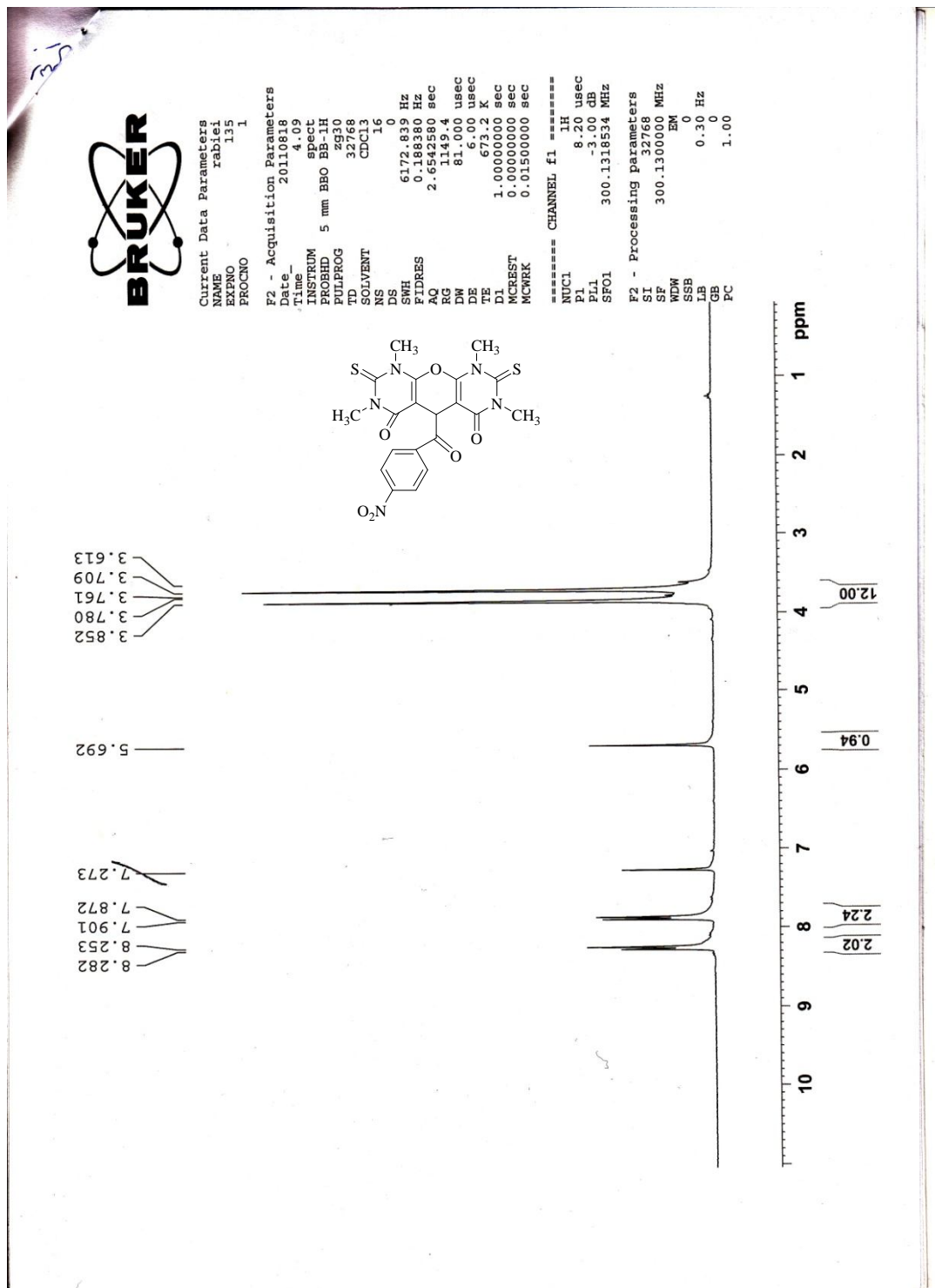
115.682
115.973
130.427
130.550
131.949
131.990

162.762
163.125
163.788
167.171
175.437

192.650



Spectra of compound **10** :





Current Data Parameters
 NAME Miriaz
 EXPNO 349
 PROCNO 1

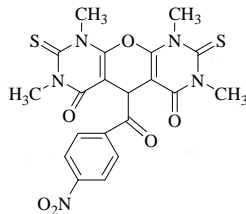
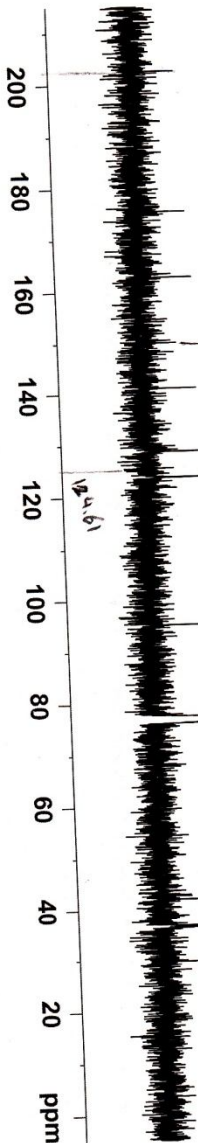
F2 - Acquisition Parameters

Date_ 20111224
 Time 13.50
 INSTRUM spect
 PROBHID 5 mm BBO BB-1H
 PULPROG zgpg2
 TD 65532
 SOLVENT CDCl3
 NS 500
 DS 0
 SWH 17985.611 Hz
 FIDRES 0.274439 Hz
 AQ 1.8219508 sec
 RG 4096
 DW 27.800 usec
 DE 6.00 usec
 TE 295.3 K
 DL 2.00000000 sec
 d11 0.03000000 sec
 d1 0.00000000 sec
 MCREST 0.00000000 sec
 MCWRK 0.01500000 sec

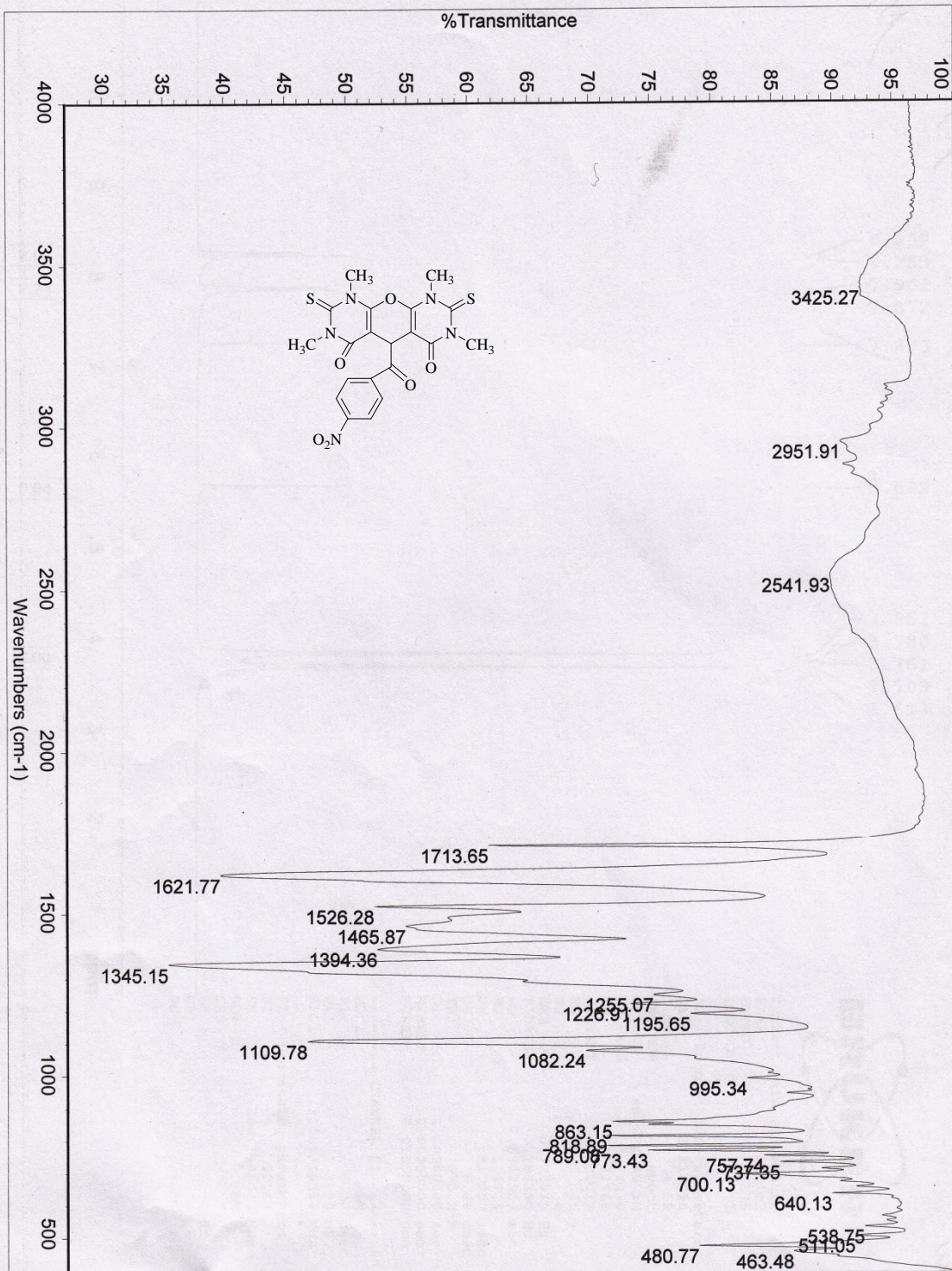
==== CHANNEL F1 =====
 NUCL 13C
 P1 6.30 usec
 PL1 -5.00 dB
 FL1 75.4752953 MHz
 SFO1

==== CHANNEL F2 =====
 CPDPRG2 waltz16
 NUCL 1H
 PCPD2 77.00 usec
 PL2 -3.00 dB
 PL12 17.00 dB
 PL13 17.00 dB
 SFO2 300.1312005 MHz

F2 - Processing parameters
 SI 32768
 SF 75.4677490 MHz
 WDM 0
 SSB 0
 LB 1.00 Hz
 GB 0
 PC 1.40



- 175.418
- 162.746
- 141.059
- 128.765
- 123.782
- 95.170
- 77.423
- 77.000
- 76.576
- 42.048
- 36.779
- 36.453
- 29.683



Spectra of compound **1q** :

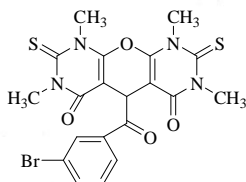


Current Data Parameters
 NAME rabiei
 EXPNO 170
 PROCNO 1

F2 - Acquisition Parameters
 Date_ 20111203
 Time_ 15.28
 INSTRUM spect
 PROBHD 5 mm BBO BB-1H
 PULPROG zg30
 TD 32768
 SOLVENT CDCl3
 NS 16
 DS 0
 SWH 6172.829 Hz
 FIDRES 0.168300 Hz
 AQ 2.6542580 sec
 RG 362
 DW 81.000 usec
 DE 6.000 usec
 TE 67.00 K
 D1 1.0000000 sec
 MCREST 0.0000000 sec
 MCWREK 0.01500000 sec

===== CHANNEL f1 =====
 NUC1 1H
 P1 8.20 usec
 PL1 -3.00 dB
 SF01 300.1318534 MHz

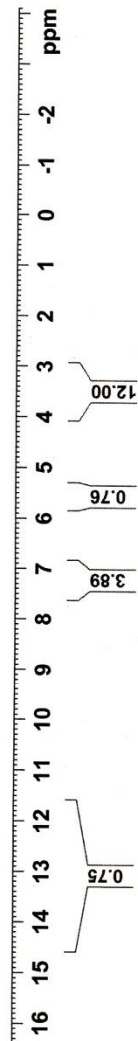
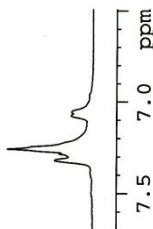
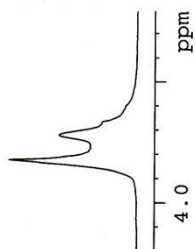
F2 - Processing parameters
 SI 32768
 SF 300.1300000 MHz
 WDW EM
 SSB 0
 LB 0.30 Hz
 GB 0
 PC 1.00



3.827
 3.770
 3.724

5.677

7.058
 7.076
 7.262
 7.285
 7.322





Current Data Parameters
NAME Mirimaz
EXPNO 345
PROCNO 1

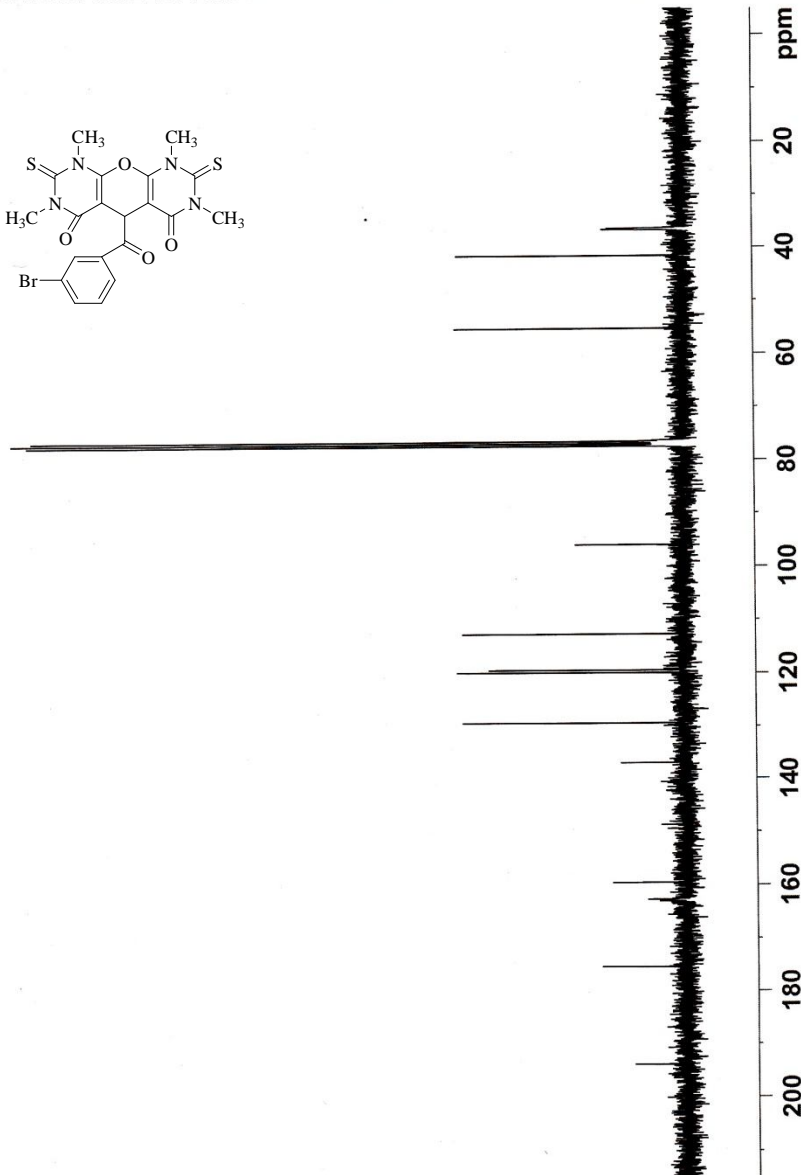
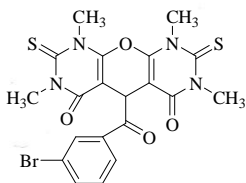
F2 - Acquisition Parameters
Date_ 20111219
Time 14.02
INSTRUM spect
PROBHD 5 mm BBO BB-1H
PULPROG zgpg
TD 65536
SOLVENT CDCl3
NS 500
DS 0
SWH 17985.611 Hz
FIDRES 0.274439 Hz
AQ 1.8219508 sec
RG 4096
DW 27.800 usec
DE 6.00 usec
TE 295.3 K
D1 2.0000000 sec
d11 0.0300000 sec
MCREST 0.0000000 sec
MCWRK 0.0150000 sec

==== CHANNEL f1 =====
NUC1 13C
P1 6.30 usec
PL1 -5.00 dB
SFO1 75.4752953 MHz

==== CHANNEL f2 =====
CPDPRG2 waltz16
NUC2 1H
PCPD2 77.00 usec
PL2 -3.00 dB
PL12 17.00 dB
PL13 17.00 dB
SFO2 300.1312005 MHz

F2 - Processing parameters
SI 32768
SF 75.4677490 MHz
WDW EM
SSB 0
LB 1.00 Hz
GB 0
PC 1.40

193.993
175.476
162.766
159.624
136.953
129.473
119.990
119.512
112.799
96.004
77.440
77.016
76.593
55.382
41.668
36.714



Spectra of compound **1r** :

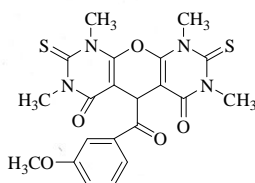


Current Data Parameters
 NAME rabiei
 EXPNO 193
 PROCNO 1

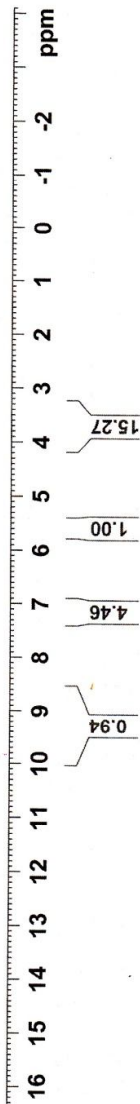
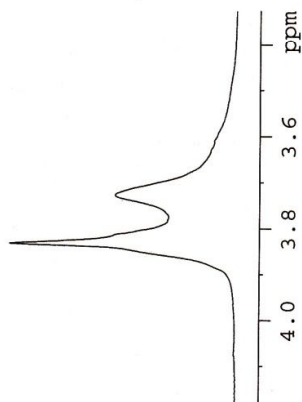
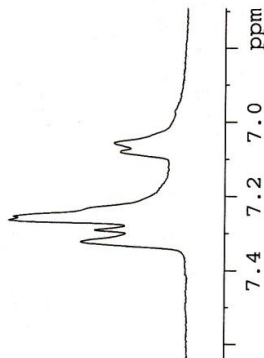
F2 - Acquisition Parameters
 Date_ 20120101
 Time 10.31
 INSTRUM spect
 PROBHD 5 mm BBO BB-1H
 PULPROG zg30
 TD 32768
 SOLVENT CDCl3
 NS 8
 DS 0
 SWH 6172.839 Hz
 FIDRES 0.188380 Hz
 AQ 2.6542380 sec
 RG 362
 DW 81.000 usec
 DE 6.00 usec
 TE 295.2 K
 D1 1.00000000 sec
 MCREST 0.00000000 sec
 MCWRK 0.01500000 sec

==== CHANNEL f1 =====
 NUC1 1H
 P1 8.20 usec
 PL1 -3.00 dB
 SF01 300.1318534 MHz

F2 - Processing parameters
 SI 32768
 SF 300.1300000 MHz
 WDW EM
 SSB 0
 LB 0.30 Hz
 GB 0
 PC 1.00



7.326
7.295
7.270
7.260
7.085
7.060
5.686
3.836
3.729





Current Data Parameters
 NAME rabiei
 EXPNO 194
 PROCNO 1

F2 - Acquisition Parameters

Date_ 20120101
 Time_ 11.04
 INSTRUM spect
 PROHD 5 mm BBO BB-1H
 PULPROG zgpg30
 ID 65536
 SOLVENT CDCl3
 NS 500
 DS 0
 SWH 17985.611 Hz
 FIDRES 0.274439 Hz
 AQ 1.8219508 sec
 RG 4597.6
 DW 27.800 usec
 DE 6.00 usec
 TE 295.2 K
 D1 2.00000000 sec
 d11 0.03000000 sec
 MCREST 0.00000000 sec
 MCWRK 0.01500000 sec

==== CHANNEL f1 =====
 NUC1 13C
 P1 6.30 usec
 PL1 -5.00 dB
 SFO1 75.4752953 MHz

==== CHANNEL f2 =====
 CPDPRG2 waltz16
 NUC2 1H
 P2 77.00 usec
 PL2 -3.00 dB
 PL12 17.00 dB
 PL13 17.00 dB
 SFO2 300.1312005 MHz

F2 - Processing parameters
 SI 32768
 SF 75.4677490 MHz
 WDW EM
 SSB 0
 LB 1.00 Hz
 GB 0
 PC 1.40

193.990
 175.472
 163.000
 159.624
 136.949
 129.471
 119.991
 119.509
 112.798
 96.010
 77.439
 77.015
 76.592
 55.382
 41.669
 36.581

