

## SUPPLEMENTARY MATERIAL

### Tin and Mercury Compounds Supported a Bulky Organometallic Ligand Incorporating a Pendent Guanidine Functionality

*Salima M. El-Hamruni,<sup>A</sup> Sebnem E. Sözerli,<sup>B</sup> J. David Smith,<sup>C,D</sup> Martyn P. Coles<sup>E</sup>  
and Peter B. Hitchcock<sup>C</sup>*

<sup>A</sup>Department of Chemistry, Faculty of Science, Tripoli University, PO Box 13203,  
Tripoli, Libya

<sup>B</sup>Department of Chemistry, Faculty of Arts and Sciences, Celal Bayar University,  
Manisa, Turkey

<sup>C</sup>Department of Chemistry, University of Sussex, Falmer, Brighton BN1 9QJ, UK

<sup>D</sup>Corresponding author. Email: j.d.smith@sussex.ac.uk

<sup>E</sup>School of Chemical and Physical Sciences, Victoria University of Wellington, PO  
Box 600, Wellington 6012, New Zealand

#### Contents:

pS2 **Figure S1** Overlay plots of **[1]<sub>2</sub>**, **[1]<sub>∞</sub>**, **2** and **3**

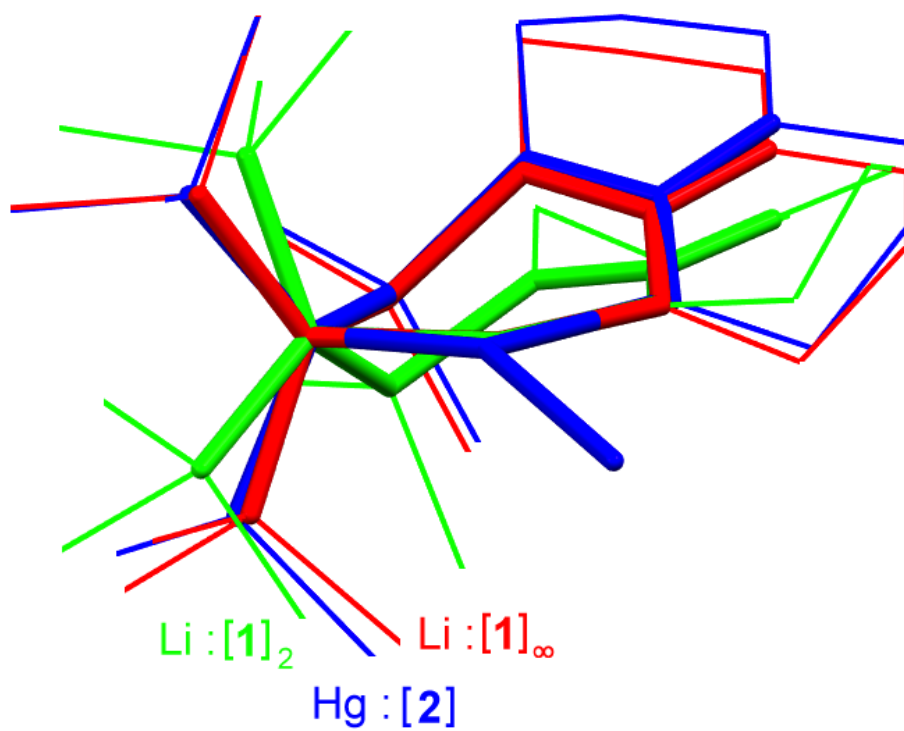
pS3 **Figure S2** VT <sup>31</sup>P{<sup>1</sup>H} NMR spectrum for **4**

pS4 **Figure S3** Thermal ellipsoid plot of InRCl<sub>2</sub>

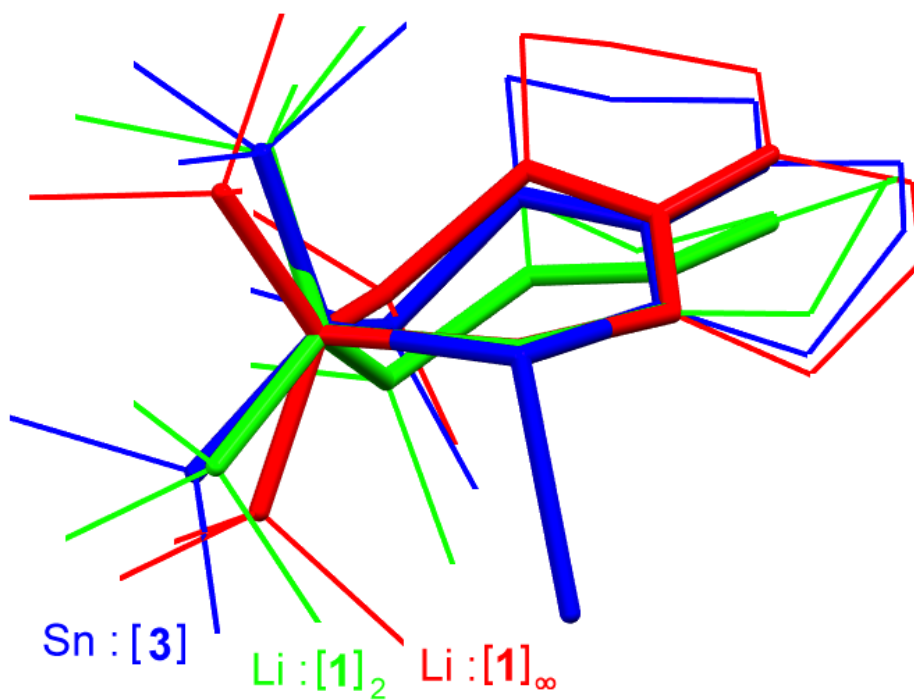
pS5 **Figure S4** Thermal ellipsoid plot of SnRMe<sub>2</sub>Cl

**Figure S1** Least squares overlay from 'pair-matching' atoms C8, M and N2, red =  $[1]_{\infty}$  (orthorhombic); green =  $[1]_2$  (triclinic). (a) blue = Hg  $[2]$ , (b) blue = Sn  $[3]$

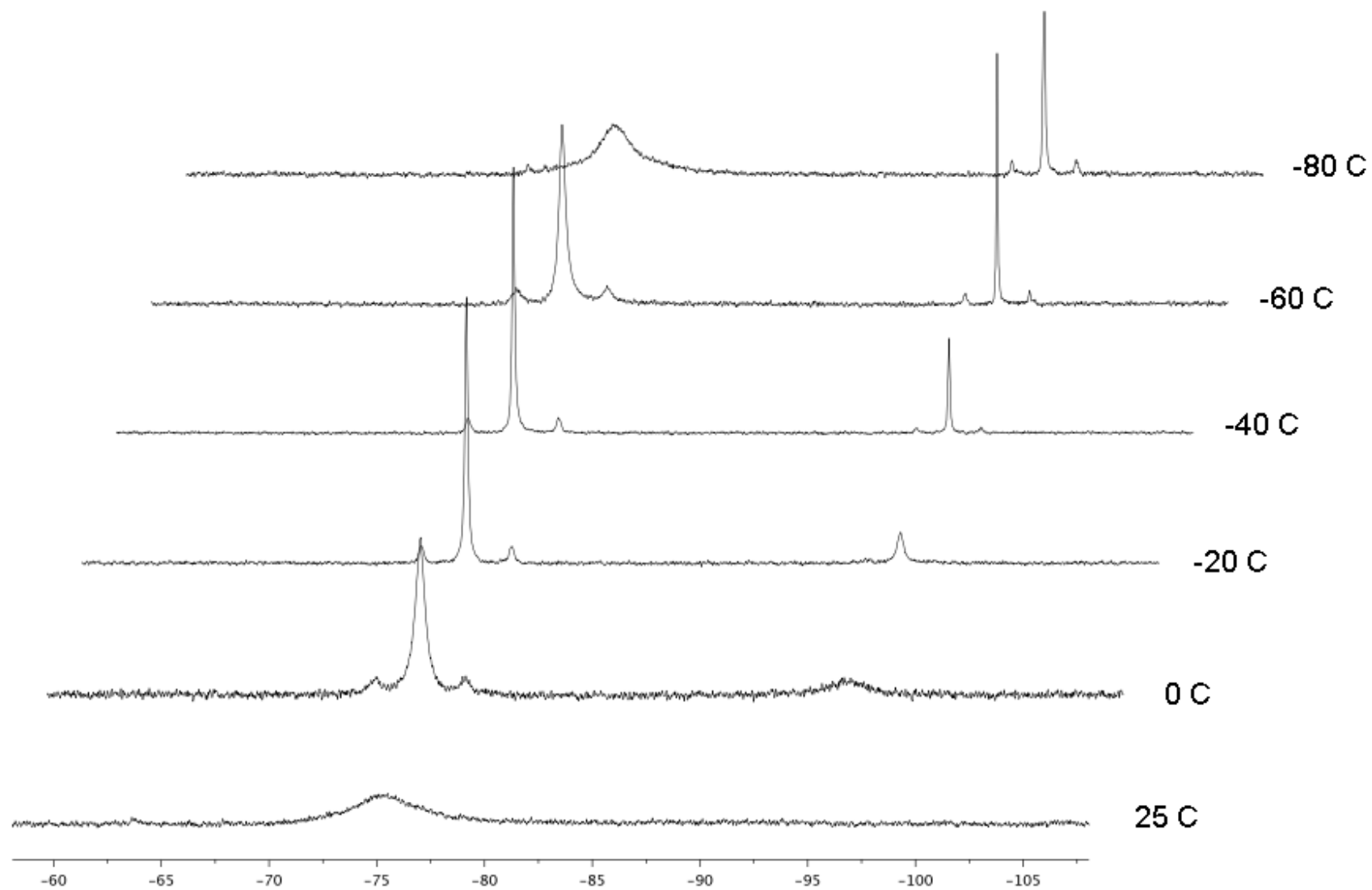
(a)



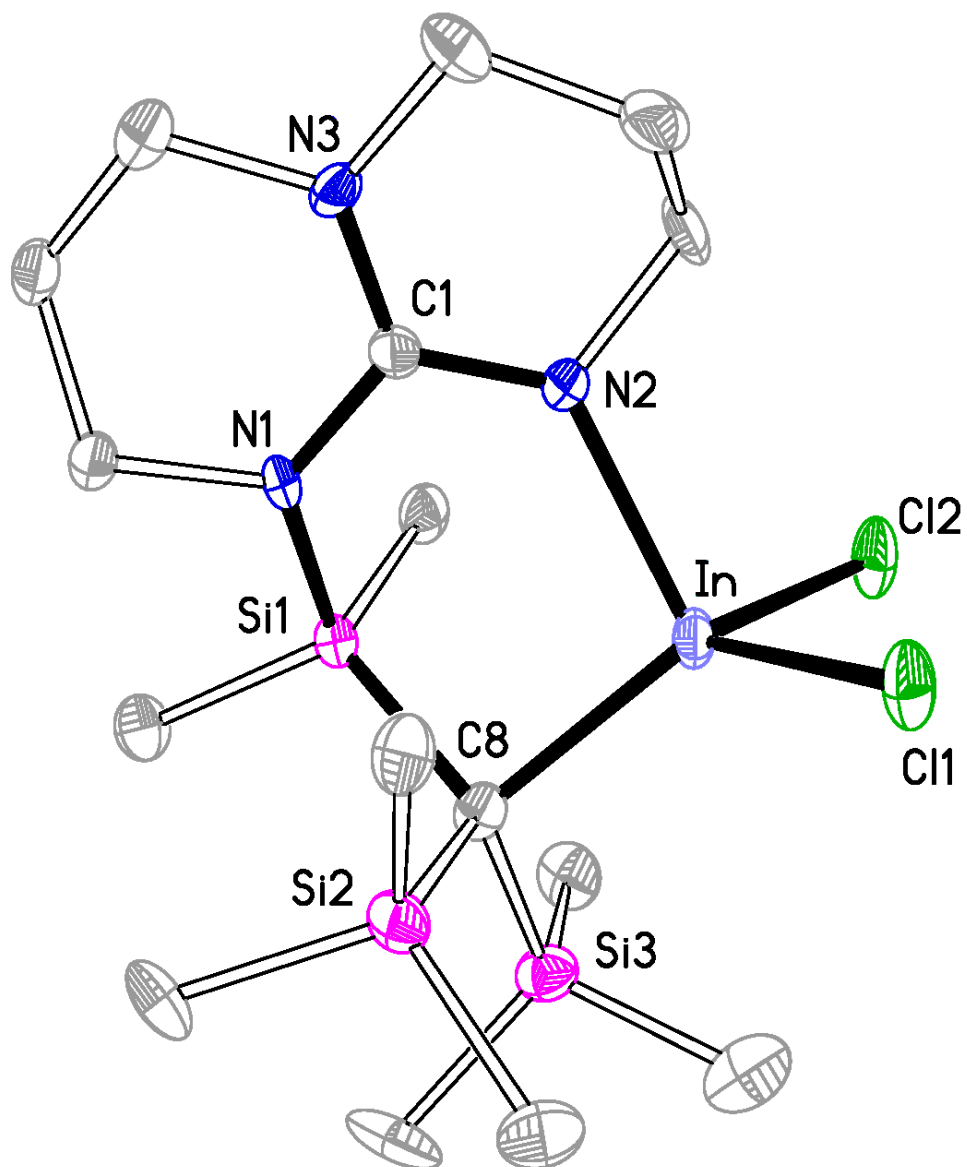
(b)



**Figure S2** VT  $^{31}\text{P}\{^1\text{H}\}$  NMR spectrum for **4** (242.8 MHz,  $\text{D}_8$ -toluene)



**Figure S3** Thermal ellipsoid plot (30% probability) of  $\text{InRCl}_2$



**Figure S4** Thermal ellipsoid plot (20% probability) of SnRMe<sub>2</sub>Cl

