

## SUPPLEMENTARY MATERIAL

### **Water-Soluble Poly( $\epsilon$ -caprolactone)-Paclitaxel Prodrugs toward an Efficient Drug Delivery System**

*Ji Wang,<sup>A</sup> Huanjiao Sun,<sup>A</sup> De shan Li,<sup>A</sup> jie yuan,<sup>A</sup> Xue fei Zhang<sup>A,B,C</sup> and Hao yu Tang<sup>A,B,C</sup>*

<sup>A</sup>College of Chemistry, Xiangtan University, Xiangtan, 411105, Hunan Province, China

<sup>B</sup>Key Laboratory of Environmentally Friendly Chemistry and Applications of Ministry of Education, Key Laboratory of Polymeric Materials and Application Technology of Hunan Province, and Universities of Hunan Province, Xiangtan, 411105, China

<sup>C</sup>Corresponding authors. E-mail: zxf7515@163.com; htang@xtu.edu.cn

## List of Figures

**Figure S1:**  $^{13}\text{C}$  NMR spectrum of P( $\alpha$ -BrCL) in  $\text{CDCl}_3$ .

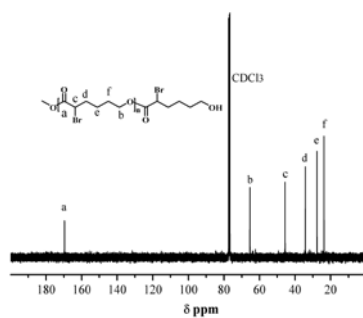
**Figure S2:**  $^{13}\text{C}$  NMR spectrum of P( $\alpha$ -C<sub>2</sub>CL) in  $\text{DMSO-}d_6$ .

**Figure S3:** Size distribution profiles of P( $\alpha$ -C<sub>2</sub>CL)-PTX aqueous solutions determined by DLS with a concentration of 1 mg/mL.

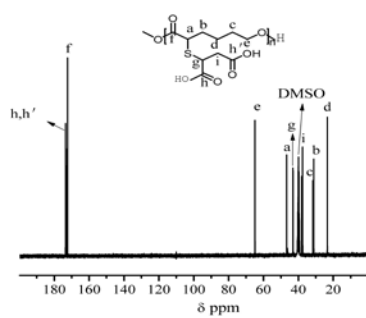
**Figure S4:** GPC traces of (a) P( $\alpha$ -C<sub>2</sub>CL)-PTX and (b) free PTX

**Figure S5** Digital photos for the aqueous solution of P( $\alpha$ -C<sub>2</sub>CL)-PTX (A: at pH 8.0~7.0; B: at pH 7.0~6.0).

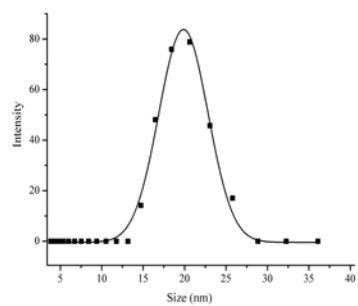
**FigureS1**



**FigureS2**



**Figure S3**



**Figure S4**

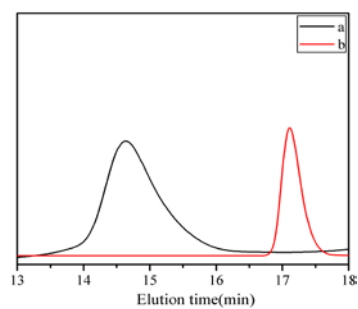
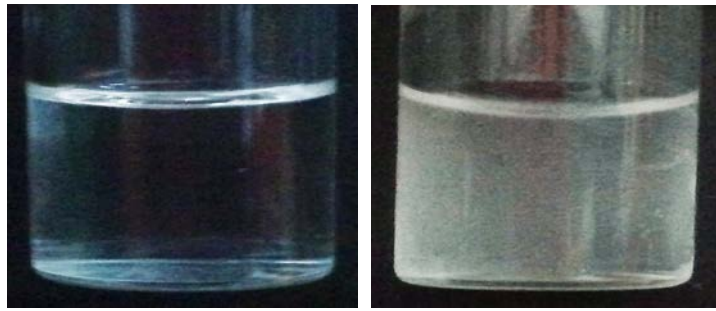


Figure S5



A

B