

10.1071/CP13140_AC
© CSIRO 2014

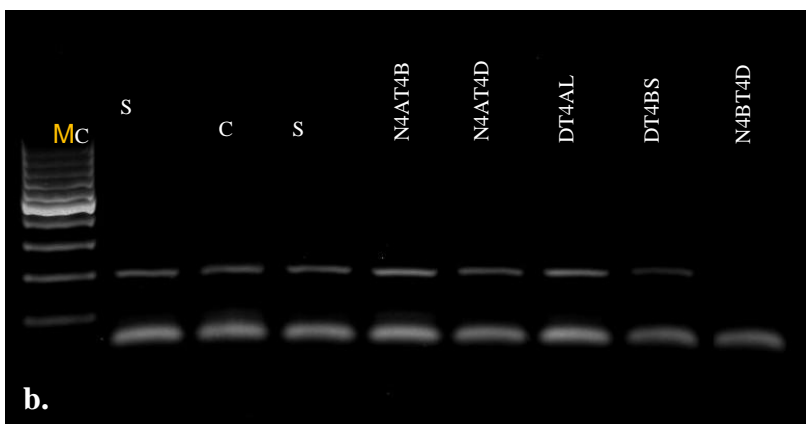
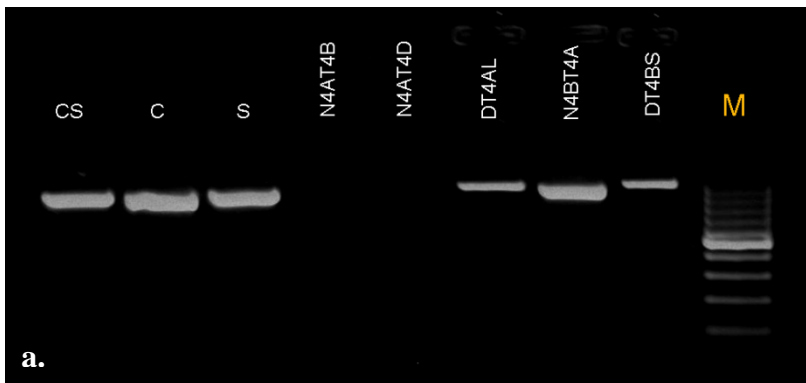
Supplementary Material: *Crop & Pasture Science*, 2014, 65(1), 38–45.

Isolation and characterisation of cytosolic glutamine synthetase (*GSe*) genes and association with grain protein content in durum wheat

Agata Gadaleta^{A,B}, *Domenica Nigro*^A, *Ilaria Marcotuli*^A, *Angelica Giancaspro*^A, *Stefania L. Giove*^A and *Antonio Blanco*^A

^ADepartment of Soil, Plant and Food Sciences, Section of Genetics and Plant Breeding, University of Bari ‘Aldo Moro’, Via G. Amendola 165/A – 70126 Bari, Italy.

^BCorresponding author. Email: agata.gadaleta@agr.uniba.it



Suppl. Fig. 1. Physical mapping of *GSe-A4* and *GSe-B4* genes on the homologous chromosome of group 4 using nulli-tetrasomic and ditelosomic aneuploid lines of cv. Chinese Spring (Sears 1966, Sears 1978). *GSe-A4* is localized on the chromosome 4A (a) and *GSe-B4* on the chromosome 4B (b).

Suppl. Table 1. Primer pairs specific for the two isoforms of *Gse* gene used for *GSe-A4* and *GSe-B4* genes physical mapping

Gene name	Primer Orientation	Primer 5'-3' sequence
<i>GSe-A4</i>	Fw	CAATTTTGTGTTTGTGTAACC
	Rev	AGCATACACCACATCACATC
<i>GSe-B4</i>	Fw	AGGAACATACATCCAGCTAGG
	Rev	GGGAGGGCAACGAGCGCCGGC

Suppl. Table 2. correspondence between mapped SNP number code and their name in the Illumina chip

Mapped marker name	Accession name of marker in Illumina chip
SNP_02862	BobWhite_c3670_517
SNP_04178	BobWhite_c64932_360
SNP_05336	BobWhite_rep_c63130_876
SNP_06616	BS00015354_51
SNP_08051	BS00036422_51
SNP_08555	BS00049729_51
SNP_09940	BS00067030_51
SNP_10141	BS00067759_51
SNP_10939	BS00077560_51
SNP_11693	BS00091101_51
SNP_19715	Excalibur_c10563_523
SNP_20752	Excalibur_c15904_1331
SNP_26135	Excalibur_c62090_277
SNP_29611	Excalibur_s114708_55
SNP_30711	Ex_c37521_670
SNP_31141	Ex_c6348_1205
SNP_31275	Ex_c6870_1704
SNP_31402	Ex_c7514_3072
SNP_34106	GENE-4691_462
SNP_34318	IAAV1069
SNP_34967	IAAV5054
SNP_34968	IAAV5058
SNP_35159	IAAV6170
SNP_35786	IACX1734
SNP_36191	IACX7409
SNP_36723	Jagger_c7141_114
SNP_38237	Kukri_c107526_208
SNP_38979	Kukri_c14150_109
SNP_39587	Kukri_c17556_411
SNP_41808	Kukri_c31596_630
SNP_41809	Kukri_c31596_818
SNP_41810	Kukri_c31596_872
SNP_44203	Kukri_c53985_59
SNP_44961	Kukri_c64283_212
SNP_45180	Kukri_c67076_479
SNP_46898	Kukri_rep_c105330_552
SNP_47693	Kukri_rep_c69291_170
SNP_48133	Kukri_rep_c75743_357
SNP_51056	RAC875_c109483_523

SNP_51278	RAC875_c118749_111
SNP_52880	RAC875_c20657_2535
SNP_56659	RAC875_c52232_196
SNP_58113	RAC875_c7019_754
SNP_58495	RAC875_c81356_645
SNP_58496	RAC875_c81356_688
SNP_59513	RAC875_rep_c107142_414
SNP_62075	Ra_c21042_617
SNP_63403	Ra_c8425_1331
SNP_65074	RFL_Contig5676_1956
SNP_65076	RFL_Contig5676_748
SNP_66313	Tdurum_contig10174_155
SNP_66768	Tdurum_contig10833_1928
SNP_67426	Tdurum_contig12069_385
SNP_70728	Tdurum_contig42011_1051
SNP_71893	Tdurum_contig48442_645
SNP_72148	Tdurum_contig51089_1066
SNP_72608	Tdurum_contig5799_773
SNP_74033	Tdurum_contig98197_73
SNP_74369	tplb0029f21_174
SNP_75369	wsnp_BE405483A_Ta_1_1
SNP_75475	wsnp_be471272A_Ta_2_1
SNP_75548	wsnp_BE498209A_Ta_2_1
SNP_76299	wsnp_Ex_c11417_18429357
SNP_76544	wsnp_Ex_c1358_2600929
SNP_77492	wsnp_Ex_c26560_35803210
SNP_78243	wsnp_Ex_c4819_8600618
SNP_79065	wsnp_Ex_rep_c102317_87512660
SNP_80354	wsnp_Ku_c2958_5561339
SNP_80412	wsnp_Ku_c340_706774
SNP_80836	wsnp_Ku_rep_c71755_71490557
SNP_80902	wsnp_Ra_c12708_20281439
SNP_80907	wsnp_Ra_c13009_20690735
SNP_80908	wsnp_Ra_c1303_2598907
SNP_81279	wsnp_Ra_rep_c104968_88985755
