

10.1071/CP14181_AC

© CSIRO 2015

Supplementary Material: *Crop & Pasture Science*, 2015, 66(2), 168–183.

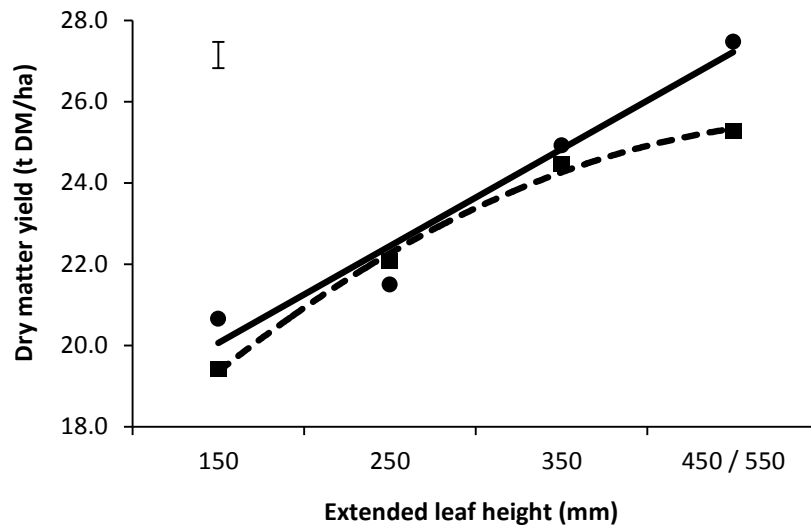
Management strategies for chicory (*Cichorium intybus*) and plantain (*Plantago lanceolata*): impact on dry matter yield, nutritive characteristics and plant density

Julia M. Lee^{A,C}, Nivonne R. Hemmingson^A, Elena M. K. Minnee^A and Cameron E. F. Clark^B

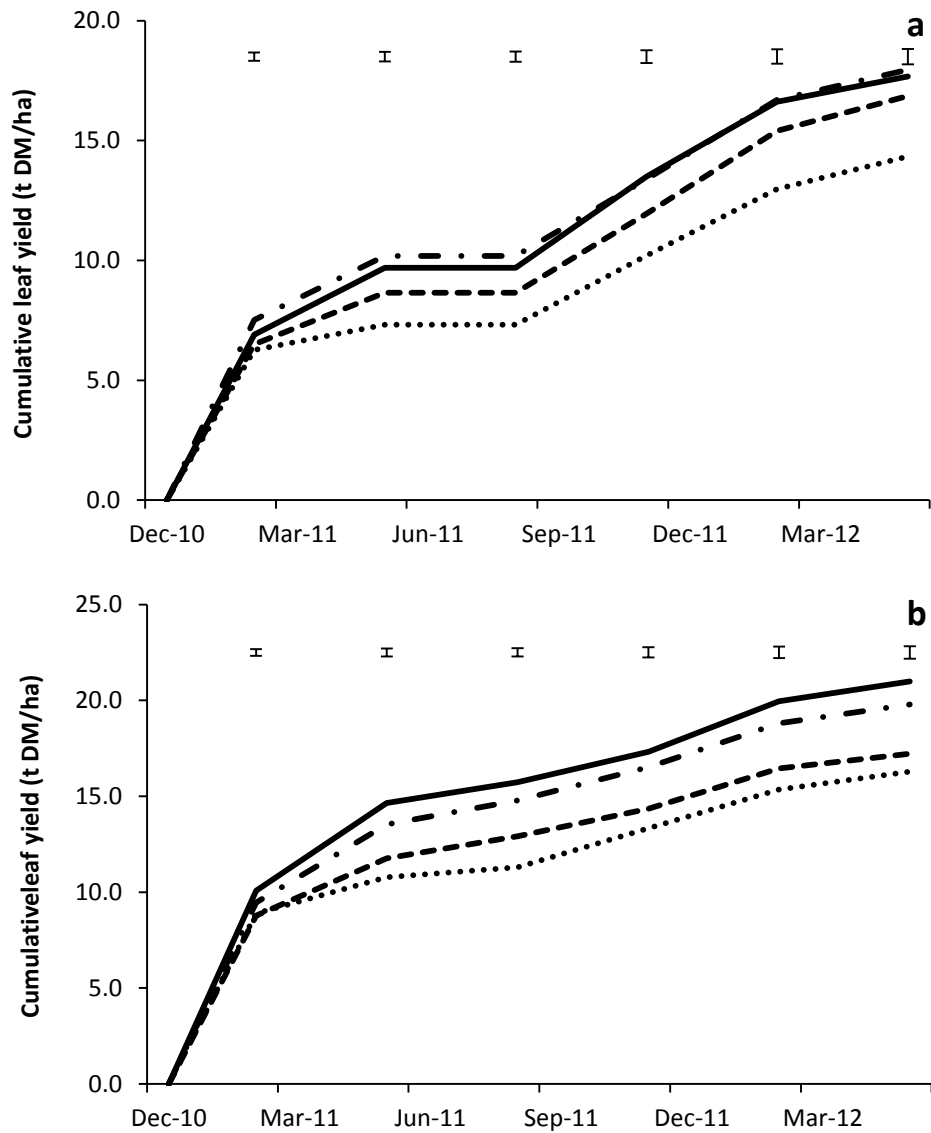
^ADairyNZ Ltd Private Bag 3221, Hamilton 3240, New Zealand.

^BDairy Science Group, Faculty of Veterinary Science, University of Sydney, Private Mail Bag 3, 425 Werombi Road, Camden, NSW 2570, Australia.

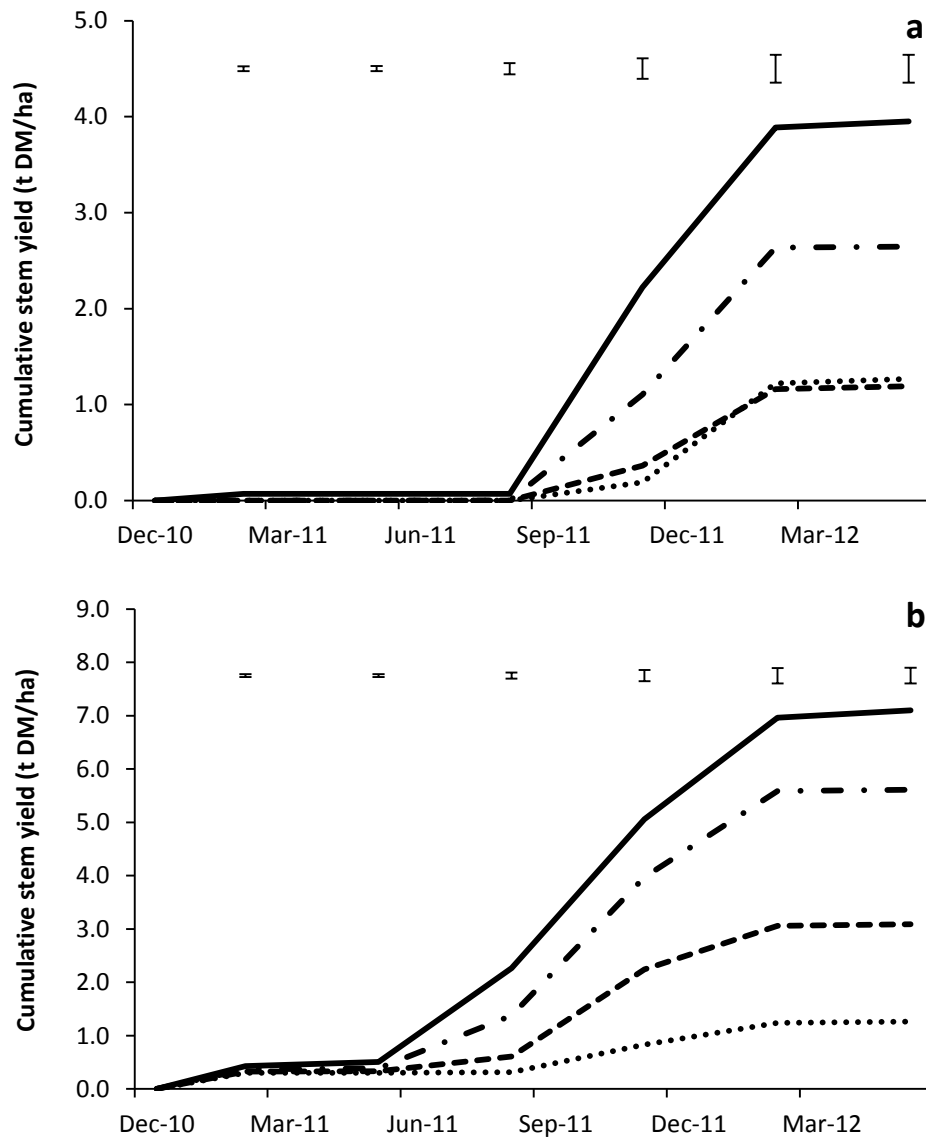
^CCorresponding author. Email: julia.lee@dairynz.co.nz



Supplementary figure 1. Interaction between extended leaf height (ELH) and residual height of spring-sown chicory and plantain on total dry matter yield (t DM/ha) from December 2010 to May 2012. Swards were cut at ELH of 150, 250, 350 or 450 or 550 mm to residual heights of 30-50 (●; solid line) or 60-80 mm (■; dashed line). The error bar indicates the standard error of the difference between treatment means.



Supplementary figure 2. Cumulative dry matter yield (t DM/ha) of (a) chicory and (b) plantain leaf from December 2010 to May 2012. Swards were defoliated at extended leaf heights (ELH) of 150 (dotted lines), 250 (dashed lines), 350 (dash-dot lines) or 450 or 550 mm (solid lines). Error bars indicate the standard error of the difference between ELH treatments at each timepoint.



Supplementary figure 3. Cumulative dry matter yield (t DM/ha) of (a) chicory and (b) plantain reproductive stem (including seedhead and flowers) from December 2010 to May 2012. Swards were defoliated at extended leaf heights (ELH) of 150 (dotted lines), 250 (dashed lines), 350 (dash-dot lines) or 450 or 550 mm (solid lines). Error bars indicate the standard error of the difference between ELH treatments at each timepoint.