

**Accessory publication****Composition of dissolved organic matter within a lacustrine environment**

*Margaret V. McCaul,<sup>A</sup> David Sutton,<sup>C</sup> André J. Simpson,<sup>B</sup> Adrian Spence,<sup>A</sup> David J. McNally,<sup>B</sup> Brian W. Moran,<sup>A</sup> Alok Goel,<sup>D</sup> Brendan O'Connor,<sup>D</sup> Kris Hart<sup>A</sup> and Brian P. Kelleher<sup>A,E</sup>*

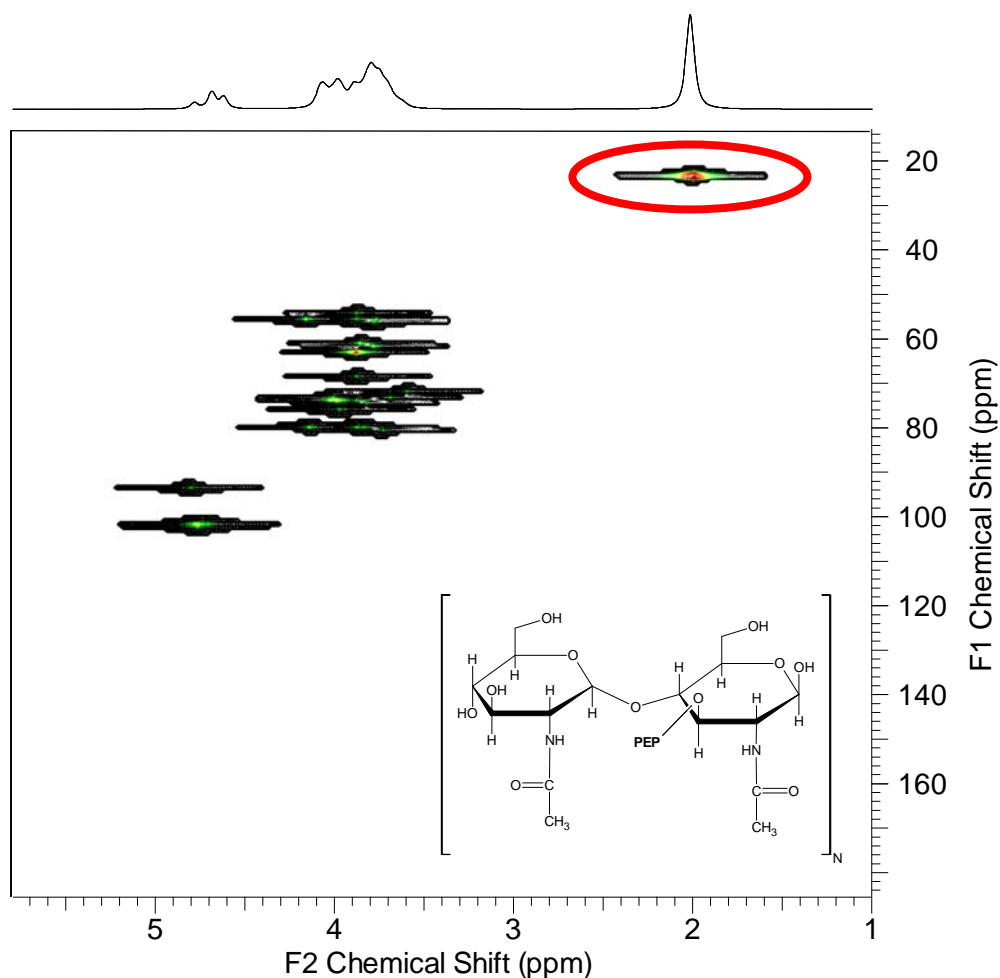
<sup>A</sup>School of Chemical Sciences, Dublin City University, Glasnevin, Dublin 9, Ireland.

<sup>B</sup>Department of Chemistry, University of Toronto, Scarborough College, 1265 Military Trail, Toronto, ON, M1C 1A4, Canada.

<sup>C</sup>School of Science, Limerick Institute of Technology, Limerick, Ireland.

<sup>D</sup>Center for Bioanalytical Sciences and School of Biotechnology, DCU, Glasnevin, Dublin 9, Ireland.

<sup>E</sup>Corresponding author. Email: brian.kelleher@dcu.ie



**Fig. A1.** Chemical shift prediction and 2-D  $^1\text{H}$ - $^{13}\text{C}$  spectral simulation of the backbone structure of peptidoglycan. PEP indicates the peptide branches that are not included in the prediction/simulation. Note: the chemical shifts of the carbohydrate units should be considered as rough approximations only as the chemical shifts of carbohydrates varies considerably with solution conditions (pH, concentration, salt background, etc.). The main purpose of the simulation is to demonstrate the strong  $\text{CH}_3$ - $(\text{C}=\text{O})$ -N resonance that is characteristic of peptidoglycan and is marked by a red oval. Spectral predictions were carried out using Advanced Chemistry Development's ACD/SpecManager and ACD/2-D NMR Predictor using Neural Network Prediction algorithms (version 12.01) and water as the solvent. Parameters used for prediction including spectral resolution, and base frequency were chosen to match those of the real datasets as closely as possible.