

Supplementary material

Range and habitat associations of the native macroalga *Caulerpa filiformis* in New South Wales, Australia

Tim M. Glasby^{A,D}, Peter. T. Gibson^A, Gregory West^A, Peter Davies^B and Sofietje Voerman^C

^ANew South Wales Department of Primary Industries, Port Stephens Fisheries Institute, Locked Bag 1, Nelson Bay, NSW 2315 Australia.

^BOffice of Environment and Heritage, NSW Department of Premier and Cabinet, Sydney, NSW 2000, Australia.

^CSchool of the Environment and Plant Functional Biology and Climate Change Cluster, University of Technology, Sydney, NSW 2007, Australia.

^DCorresponding author. Email: tim.glasby@dpi.nsw.gov.au

Examples of imagery of rocky reefs captured from a helicopter. Note that the size and resolution of images have been reduced considerably.

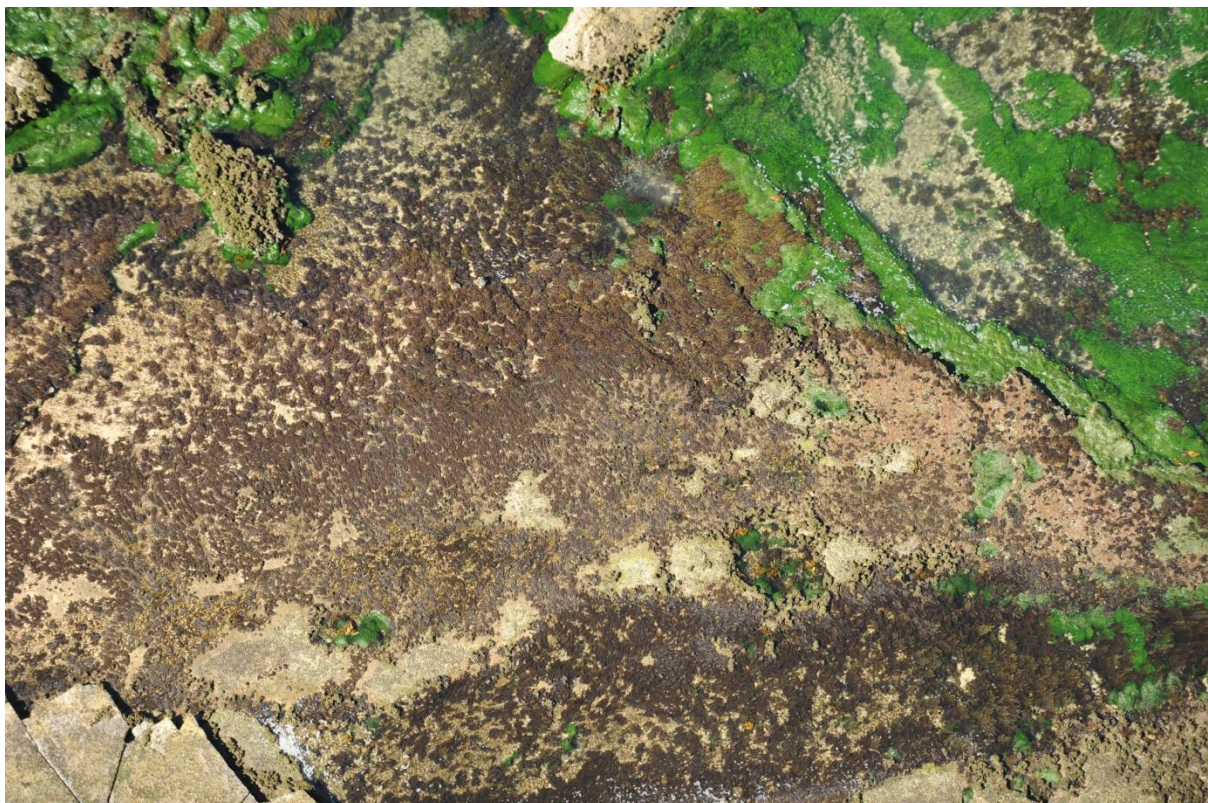


Fig. S1. Low-shore intertidal rock platform at Nobbys Headland (Newcastle) taken from 40 m in 2013. Image shows *Caulerpa filiformis* (bright green) plus other macroalgae (*Sargassum* spp., *Ecklonia radiata*) and the ascidian *Pyura stolonifera* (centre right).

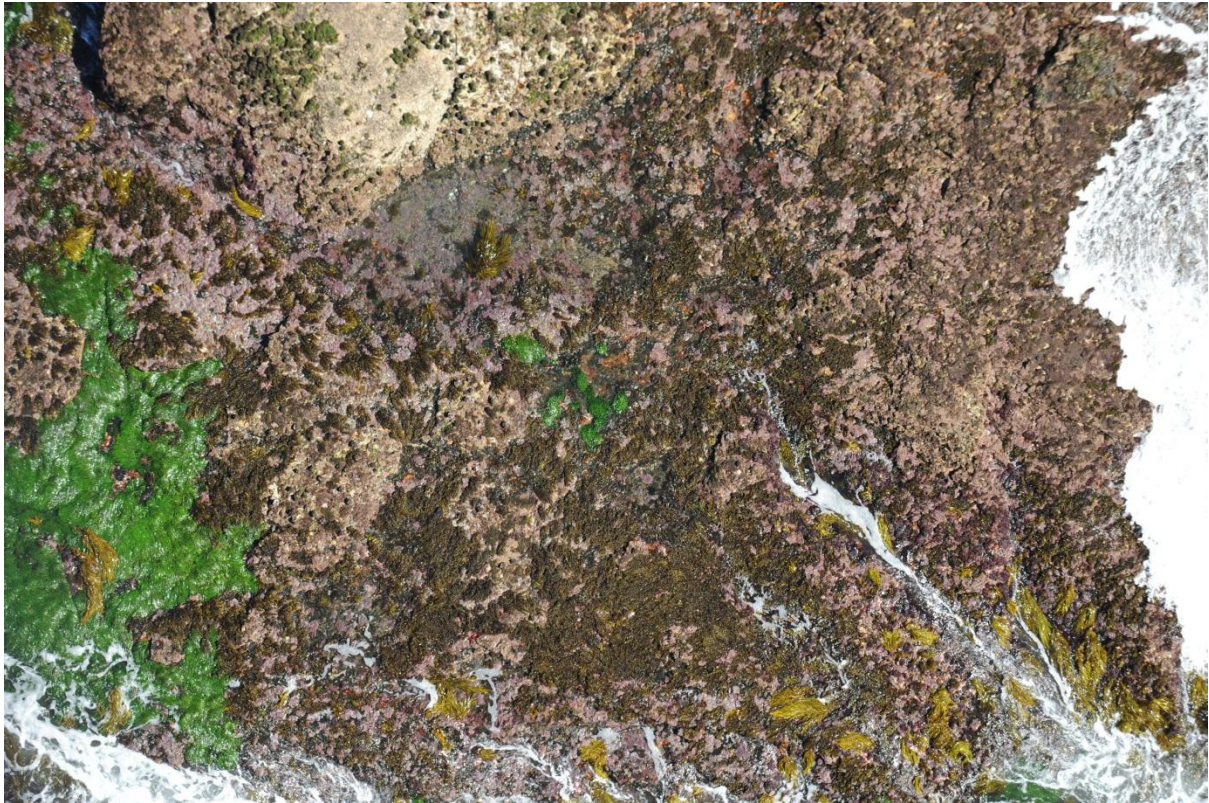


Fig. S2. Low-shore intertidal rock platform at Fishermans Bay (Port Stephens) taken from 40 m in 2013. Image shows *Caulerpa filiformis* (bright green), articulated coralline algae (red), *Sargassum* spp. (dark brown), *Phyllospora comosa* (light brown) and the ascidian *Pyura stolonifera* (top).

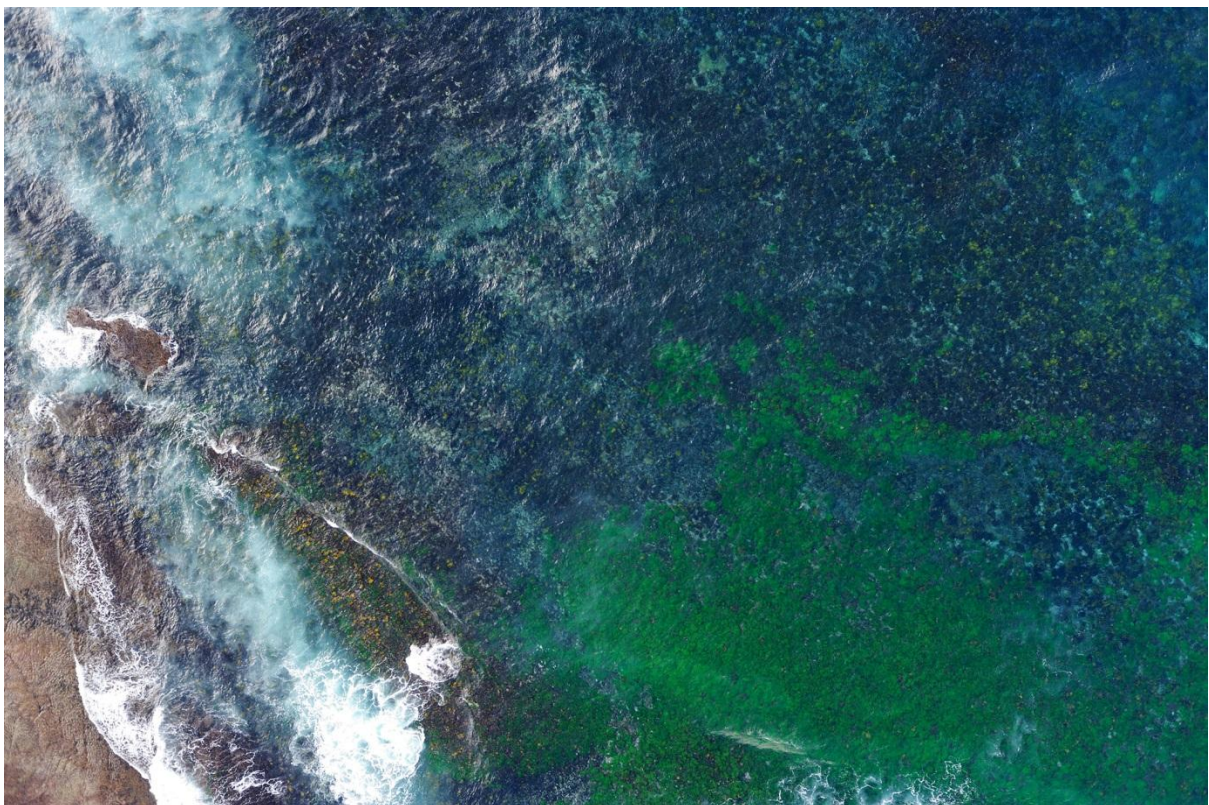


Fig. S3. Shallow (down to 4 m) subtidal reef (Long Reef, Sydney) taken from 250 m in 2012. Image shows *Caulerpa filiformis* (bright green), *Ecklonia radiata* (light brown) and other macroalgae.



Fig. S4. Shallow (1–5 m) subtidal reef (Flagstaff Point, Wollongong) taken from 250 m in 2010. Image shows *Caulerpa filiformis* (bright green) mixed with other macroalgae and sand.