

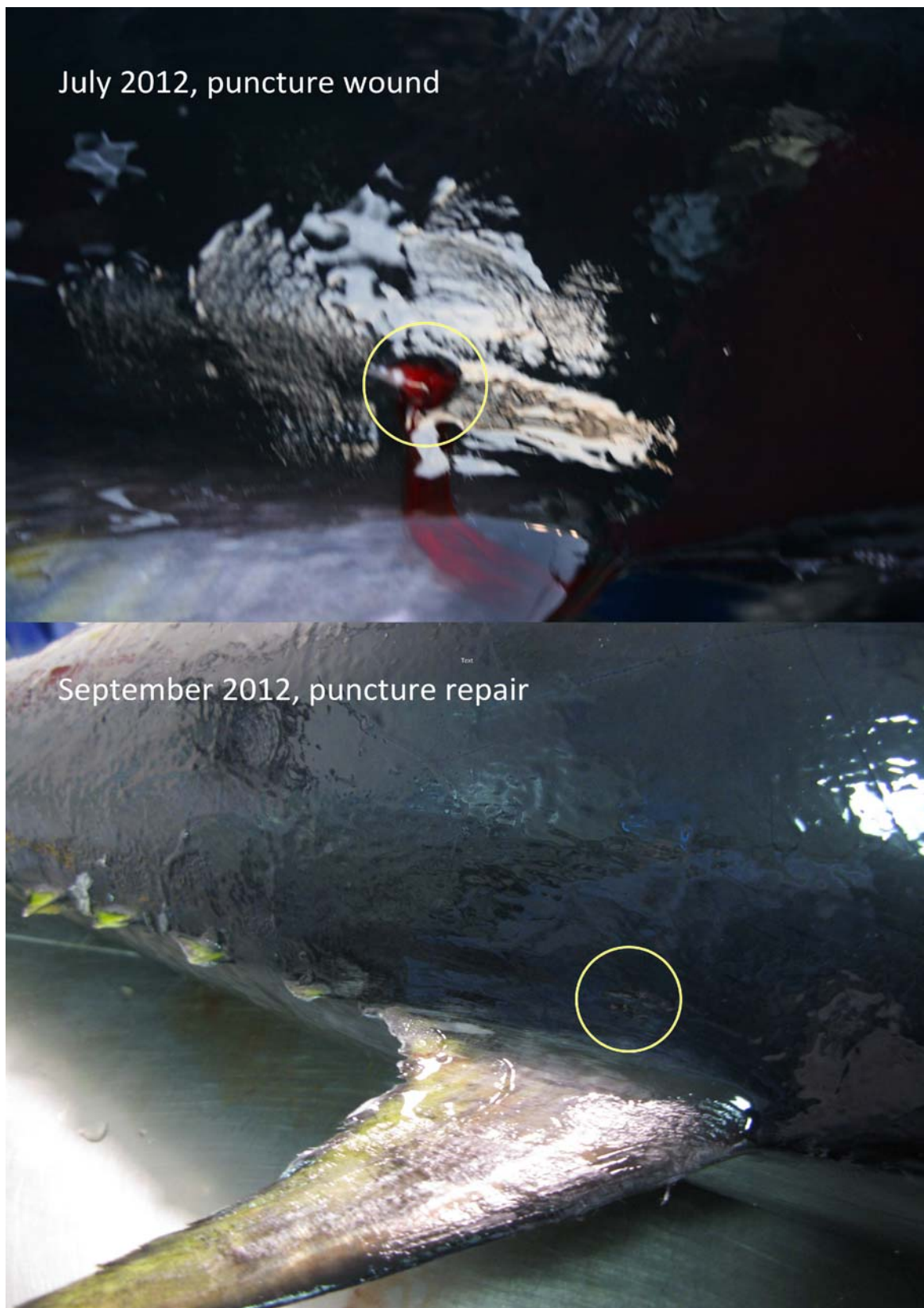
**Supplementary material**

**A new tool in the toolbox for large-scale, high-throughput fisheries mark–recapture studies using genetic identification**

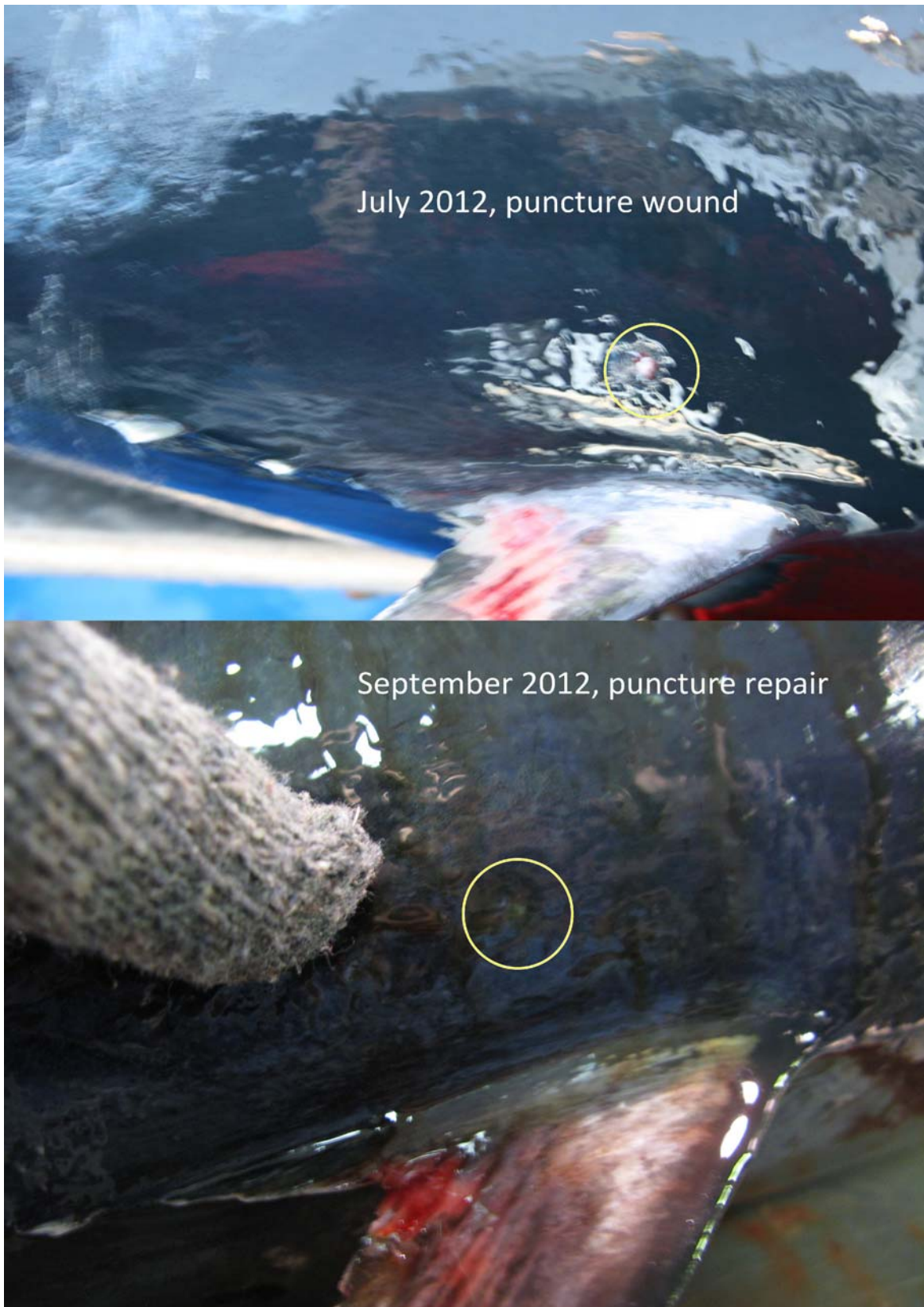
*Russell W. Bradford<sup>A,B</sup>, Peta Hill<sup>A</sup>, Campbell Davies<sup>A</sup> and Peter Grewe<sup>A</sup>*

<sup>A</sup>CSIRO Wealth from Oceans Flagship, Marine and Atmospheric Research, GPO Box 1538, Hobart, Tas. 7001, Australia.

<sup>B</sup>Corresponding author. Email: russ.bradford@csiro.au

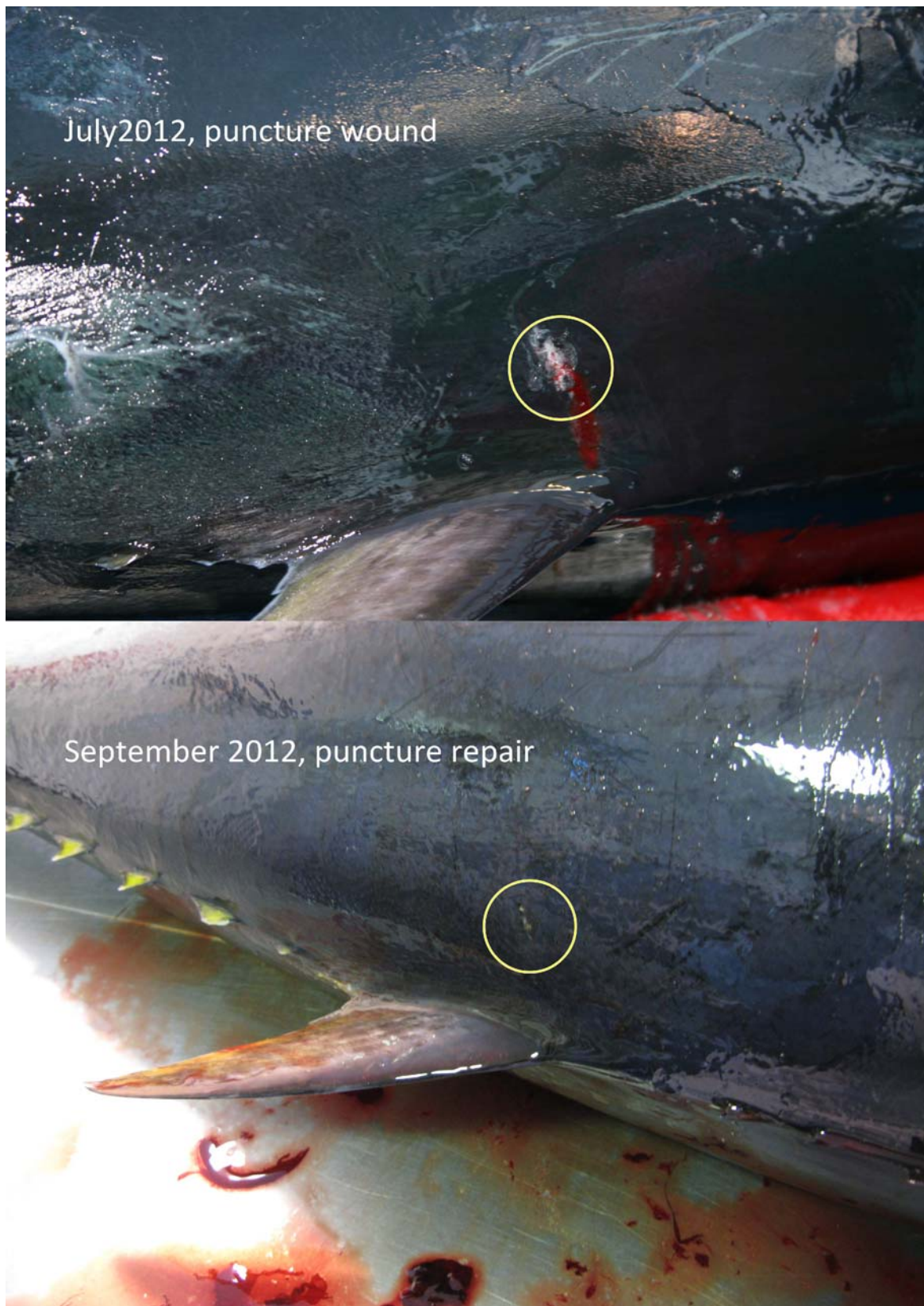


**Fig. S1.** Paired photographs of southern bluefin tuna showing damage resulting from biopsy needle at time of biopsy collection (top) and at harvest (bottom) 73 days after the biopsy was collected. The location of the biopsy has been circled in yellow.



**Fig. S1.** (Cont.)





**Fig. S1.** (Cont.)



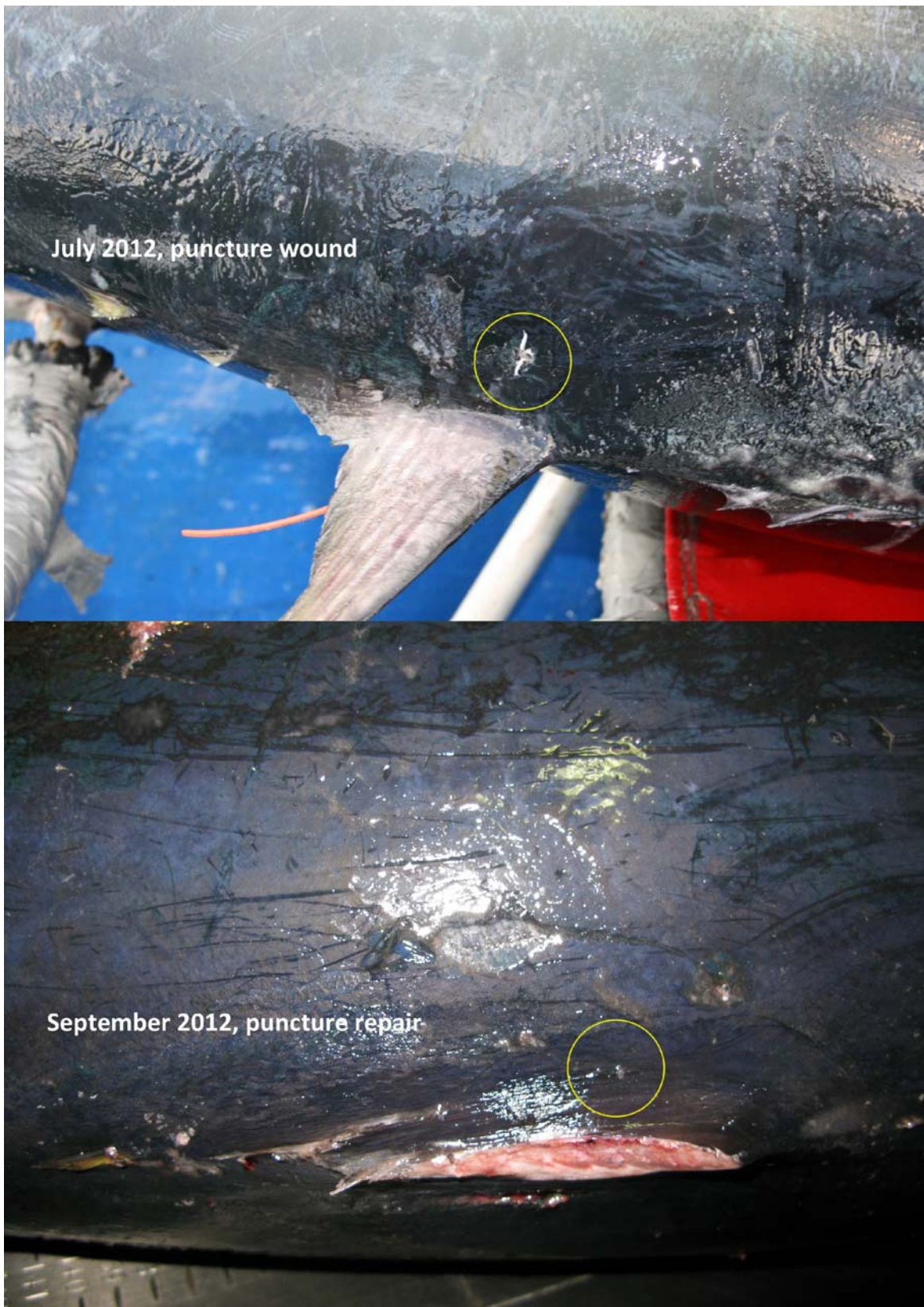


**Fig. S1.** (Cont.)

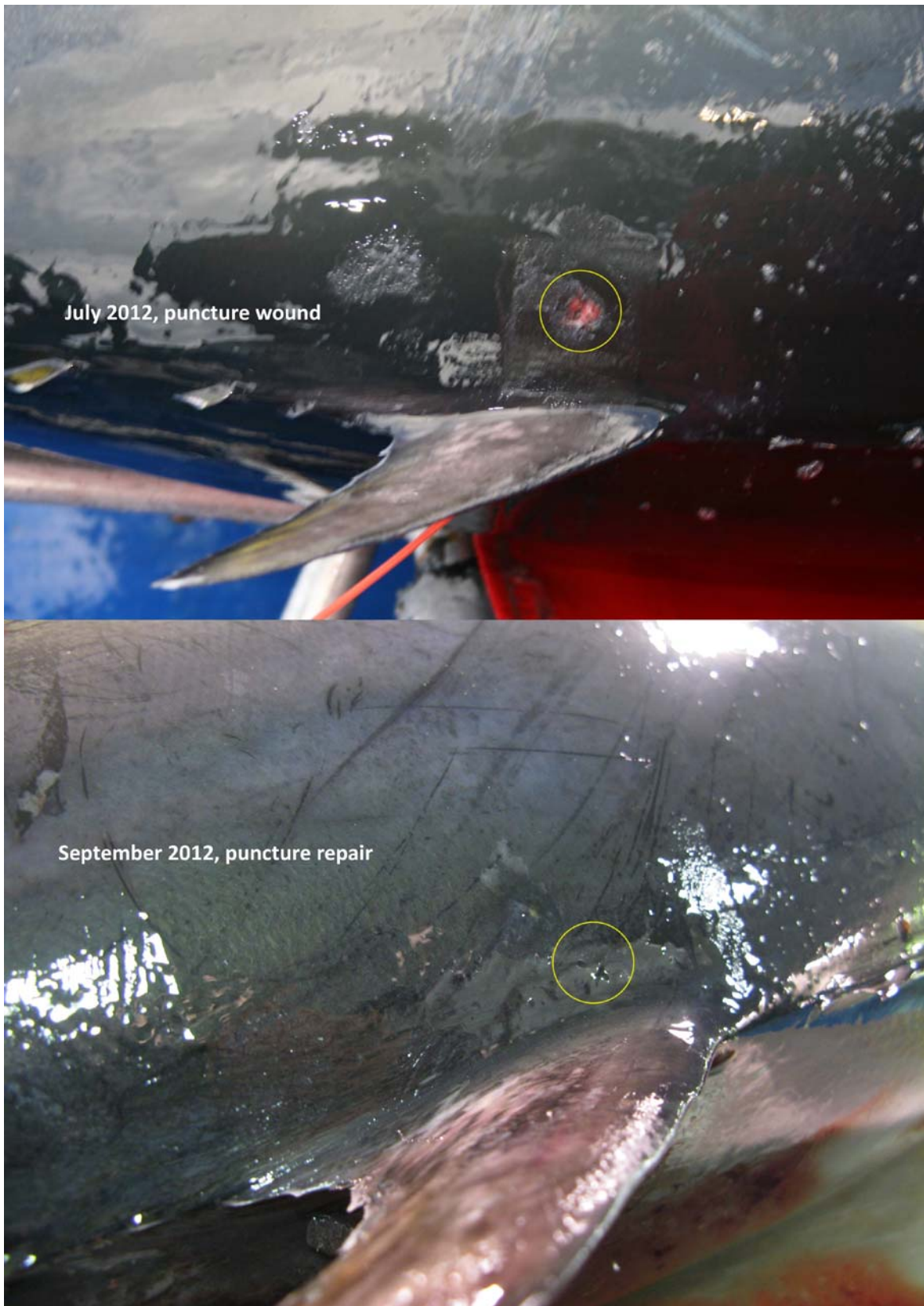


**Fig. S1.** (Cont.)





**Fig. S1.** (Cont.)



**Fig. S1.** (Cont.)





**Fig. S1.** (Cont.)



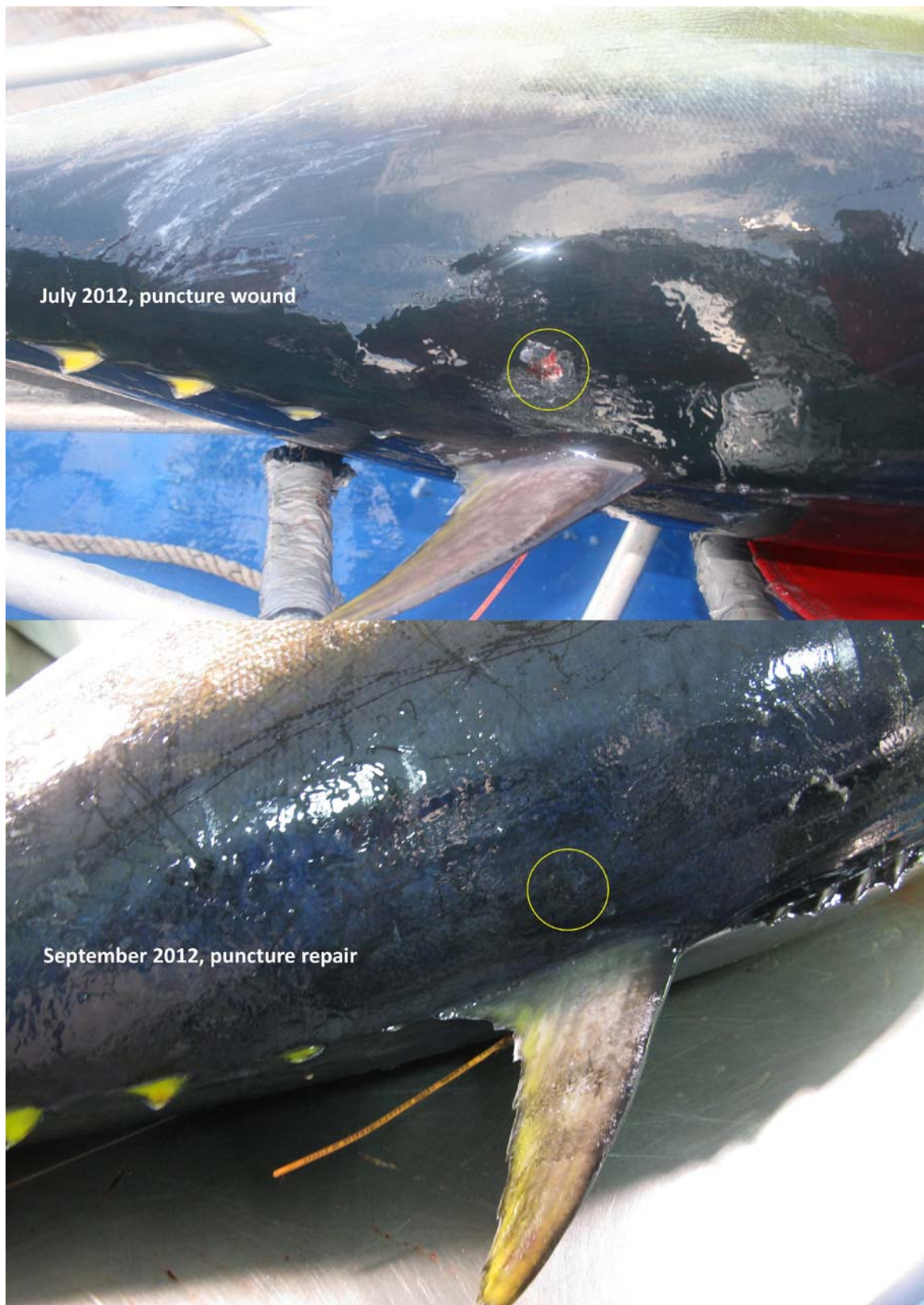


**Fig. S1.** (Cont.)





**Fig. S1.** (Cont.)



**Fig. S1.** (Cont.)



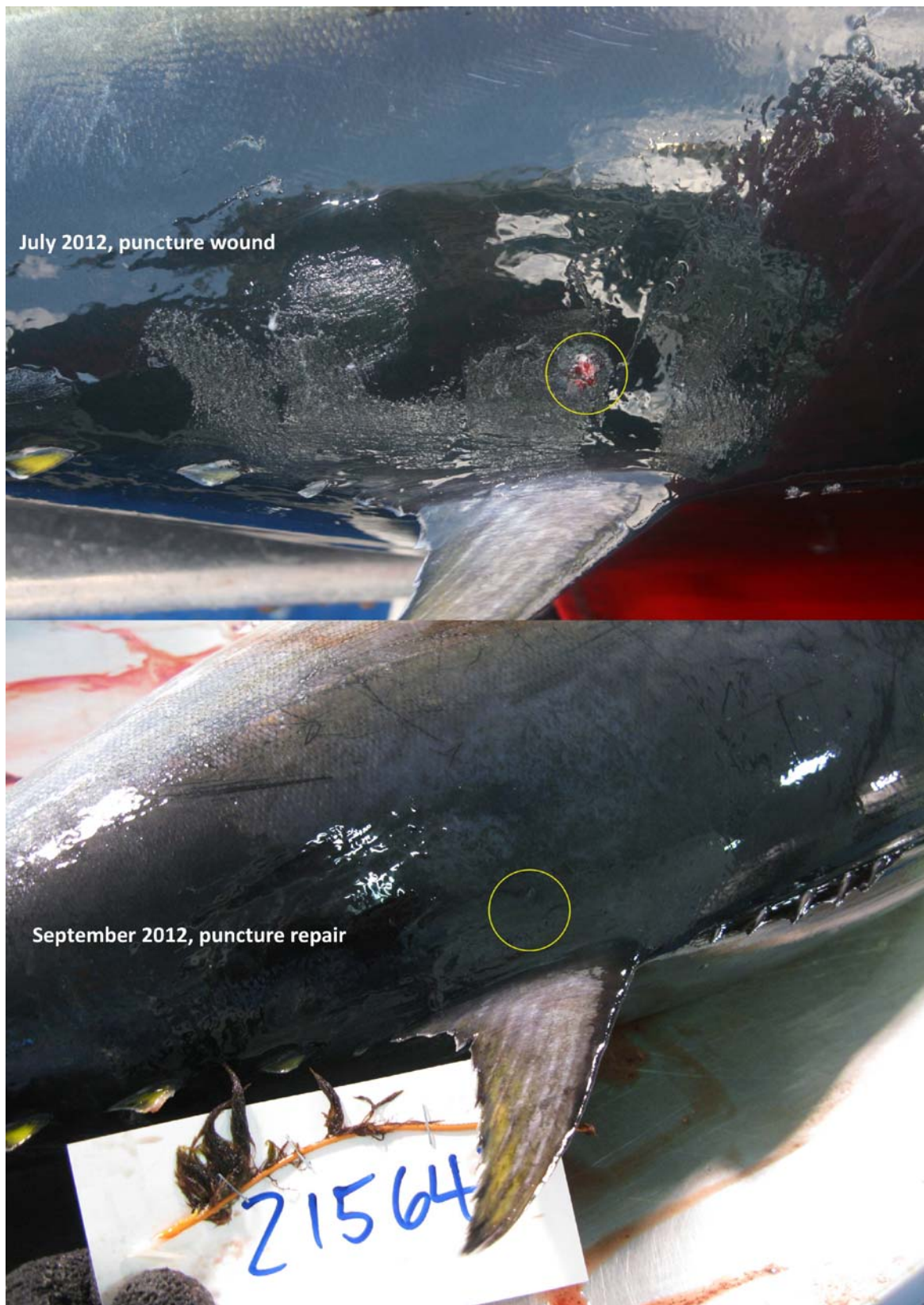


Fig. S1. (Cont.)