

**Supplementary material**

**How does marker choice affect your diet analysis: comparing genetic markers and digestion levels for diet metabarcoding of tropical-reef piscivores**

*Floriaan Devloo-Delva*<sup>A,B,C,I</sup>, *Roger Huerlimann*<sup>A,D</sup>, *Gladys Chua*<sup>A</sup>, *Jordan K. Matley*<sup>E</sup>,  
*Michelle R. Heupel*<sup>F</sup>, *Colin A. Simpfendorfer*<sup>A</sup> and *Gregory E. Maes*<sup>A,D,G,H</sup>

<sup>A</sup>Centre for Sustainable Tropical Fisheries and Aquaculture, College of Science and Engineering, James Cook University, 145 James Cook Drive, Townsville, Qld 4811, Australia.

<sup>B</sup>Oceans and Atmosphere, CSIRO, GPO Box 1538, Hobart, Tas 7000, Australia.

<sup>C</sup>School of Biological Sciences–Quantitative Marine Science, University of Tasmania, Private Bag 55, Hobart, Tas 7001, Australia.

<sup>D</sup>Comparative Genomics Centre, College of Science and Engineering, James Cook University, 145 James Cook Drive, Townsville, Qld 4811, Australia.

<sup>E</sup>Center for Marine and Environmental Studies, University of the Virgin Islands, 2 John Brewers Bay, St Thomas, VI 00802, USA.

<sup>F</sup>Australian Institute of Marine Science, PMB 3, Townsville, Qld 4810, Australia.

<sup>G</sup>Laboratory of Biodiversity and Evolutionary Genomics, KU Leuven, Charles Deberiotstraat 32, BE-3000 Leuven, Belgium.

<sup>H</sup>Center for Human Genetics, UZ Leuven–Genomics Core, KU Leuven, Herestraat 49, BE-3000 Leuven, Belgium.

<sup>I</sup>Corresponding author. Email: [floriaan.devloo.delva@hotmail.com](mailto:floriaan.devloo.delva@hotmail.com)



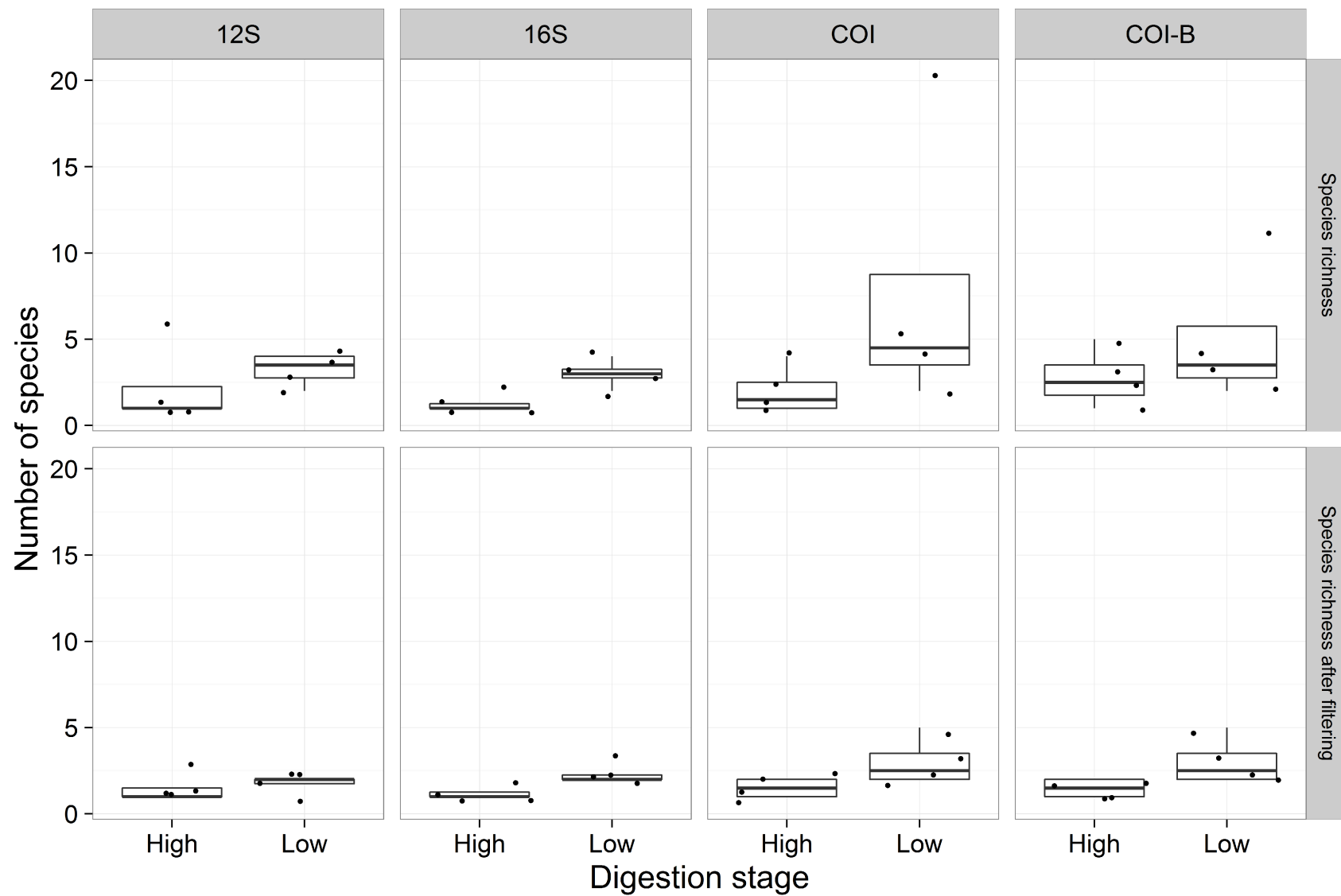
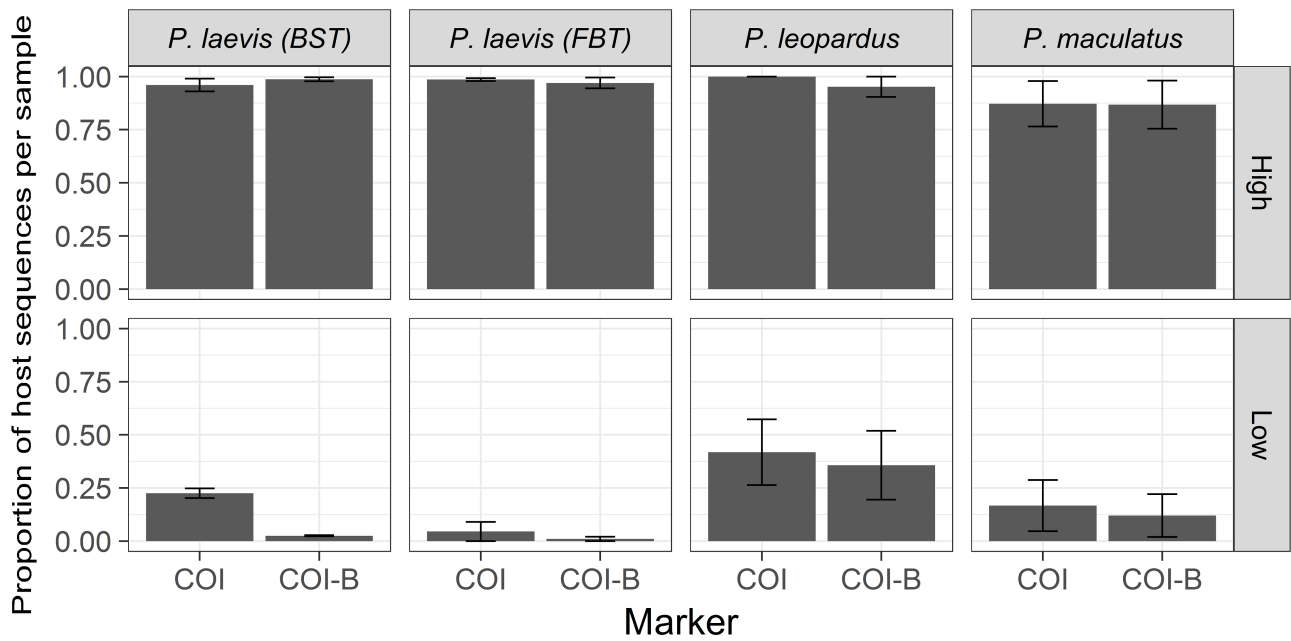


Fig. S2. Species richness of four low- and four high-digestion samples, compared across the four markers before and after blast-quality filtering.



**Fig. S3.** Efficiency of host amplification with host-blocking components for *COI*. Proportion of the number of host sequences over total number of sequences per sample is contrasted against the host species and digestion stage. Error bars represent standard errors.