

## News and Notes

### XIV INTERNATIONAL ORNITHOLOGICAL CONGRESS GREAT BRITAIN, 1966

The dates for the Congress have been fixed as follows:

Scottish Study Cruise: 16-23 July 1966 (inclusive)

Scientific Meeting in Oxford: 24-30 July 1966 (inclusive)

The Congress is open to all ornithologists over the age of 18 years.

The Study Cruise, on the 12,800 ton liner "DEVONIA", of the British India Steamship Company, will leave from Glasgow, sail round the North of Scotland and its seabird islands, and end in Edinburgh. Parties will be landed on some of the islands. Accommodation on board will be in a limited number of 1-, 2-, 3-, and 4-berth cabins, and in dormitories. A special night train will convey members from Edinburgh to Oxford, where they will arrive during the course of the Sunday morning, 24 July.

Accommodation in Oxford will be arranged in University Colleges, or, if desired, a list of hotels will be supplied. After a formal opening on the Sunday evening, 24 July, the rest of the week will be devoted to scientific meetings. These will consist of Plenary Sessions in the mornings, at which invited speakers will review recent advances in selected fields of ornithology, and of sectional sessions in the afternoons, at which short, offered papers will be read. In addition there will be exhibits, a whole day excursion, film shows, and a Social Centre for informal contacts.

Members may apply for either: both the Oxford meeting and the Study Cruise, or: the Oxford meeting only. Application forms, with full details, can be obtained from:

The Secretary-General,  
International Ornithological Congress,  
c/o Department of Zoology,  
Parks Road,  
Oxford, England.

(Applications for the Study Cruise will be dealt with in the order in which they arrive.)

The costs of the Congress are as follows:

#### CONGRESS FEE:

Full Members: £10. This entitles members to attend all functions and to receive the Proceedings.

Associate Members: £7. Wives or husbands of full members can register as Associate Members at this reduced fee, which entitles them to attend all functions, but not to receive the Proceedings.

#### CRUISE:

From: approximately £30 for dormitory passengers.

To: approximately £75 for 1-berth cabin accommodation.

(The train fare from Edinburgh to Oxford will be an additional cost)

#### ACCOMMODATION IN OXFORD:

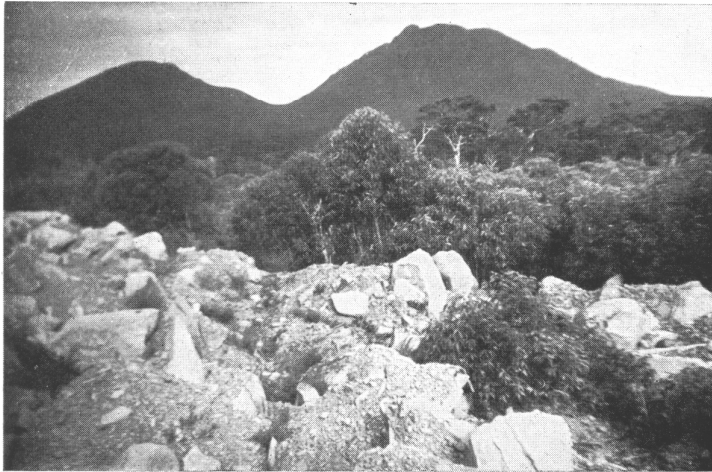
The cost, to be paid by individual members, will be approximately 50/- per day for full board in the Colleges. Hotels are, in general, more expensive.

N. Tinbergen  
Secretary-General

## CORRIGENDUM

Volume 64, Part 1

Page 6—delete lower photograph in Plate 2 and substitute the following



Warrungup from the north-east. Mallee in the foreground, Wandoo forest in middle distance

Page 8—in Figure 1, Bluff Knoll is the mountain immediately to the north-west of Coyanarup, not as shown.

Page 28—in Figure 1, under legend, read 'Savannah' for 'Dry Sclerophyll Forest' and *vice versa*.

The date of publication was March 31, 1965.