

10.1071/PC16023_AC
© CSIRO 2017
Pacific Conservation Biology 23(1), 88-94

Supplementary material

Habitat use by Grey-crowned Babblers, *Pomatostomus temporalis* in urban and peri-urban environments

Kathryn Teare Ada Lambert^{A,B} and Hugh Ford^A

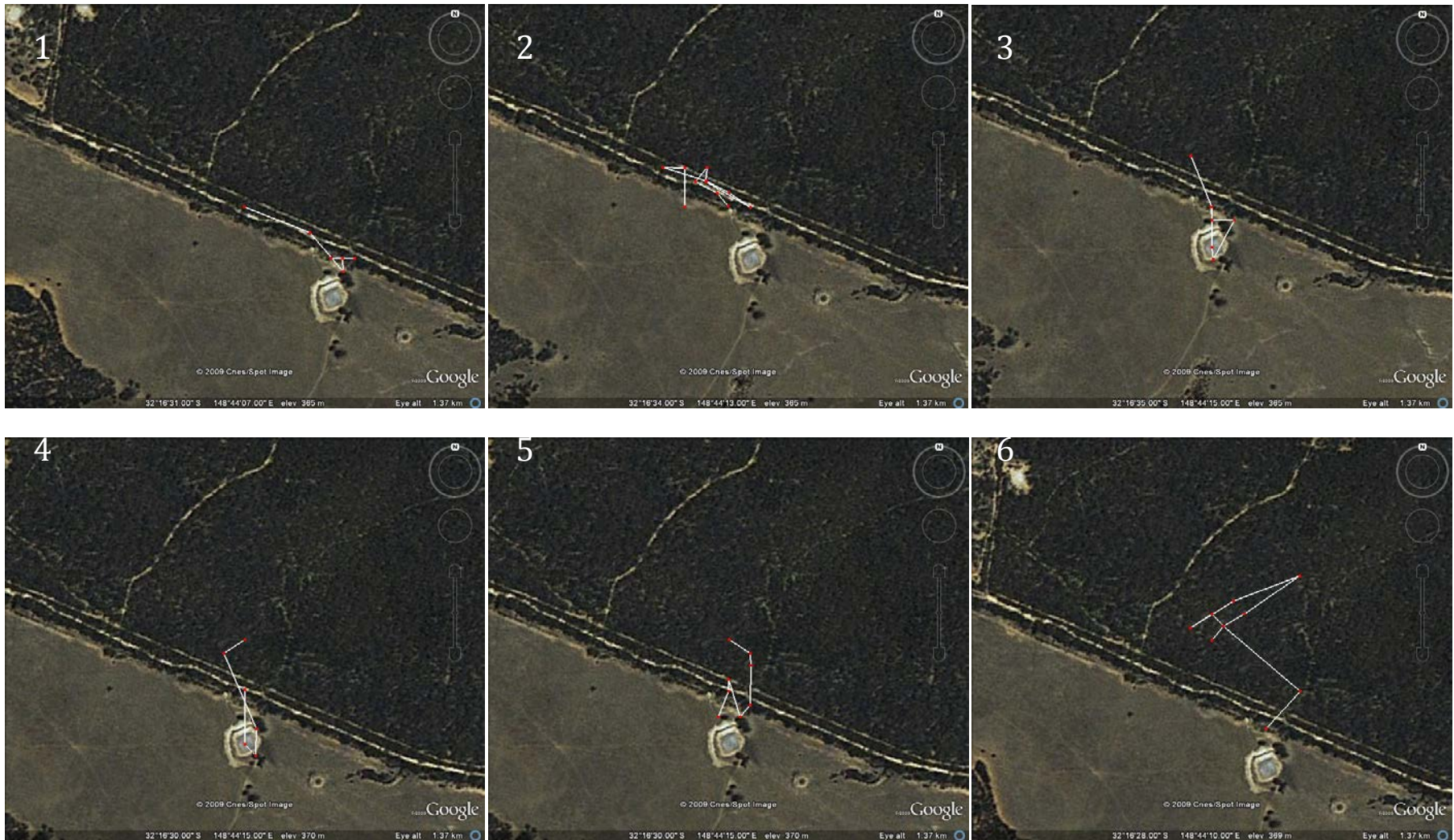
^ACentre in Behavioural and Physiological Ecology, Zoology, School of Environmental and Rural Science, University of New England, Armidale, NSW 2351, Australia.

^BCorresponding author. Email: kathryn.ta.lambert@gmail.com

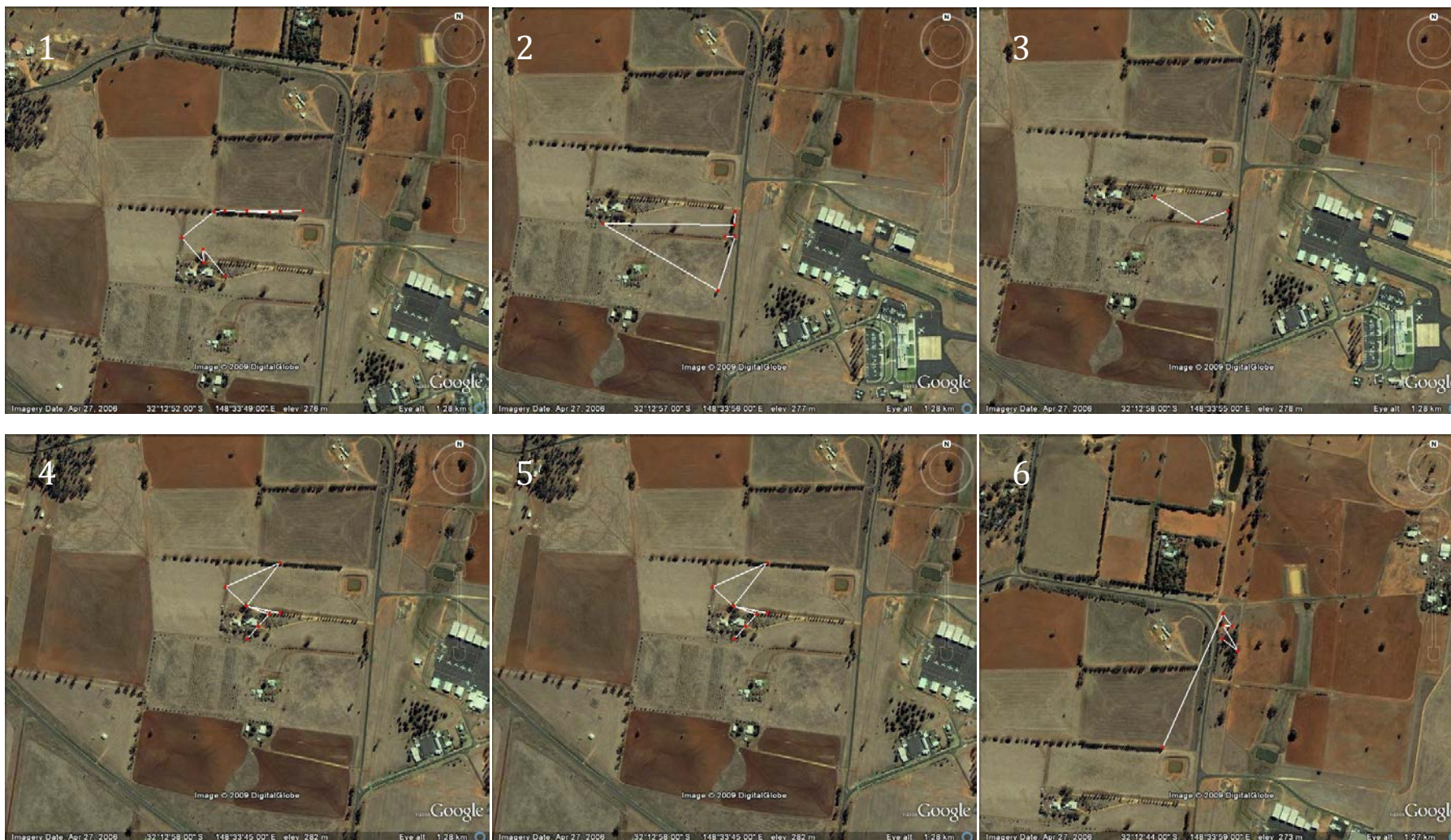
Figure S1



Beni 1 distance paths. 1=569.12m (08/06/2009, 08:05-09:25), 2=508.67m (23/06/2009, 15:23-16:53), 3= 655.72m (09/07/2009, 08:15-09:55), 4=378.94m (16/07/2009, 08:19-09:59), 5=1027.04m (20/08/2009, 15:03-16:43), 6=1007.09m (25/08/2009, 15:09-16:33).



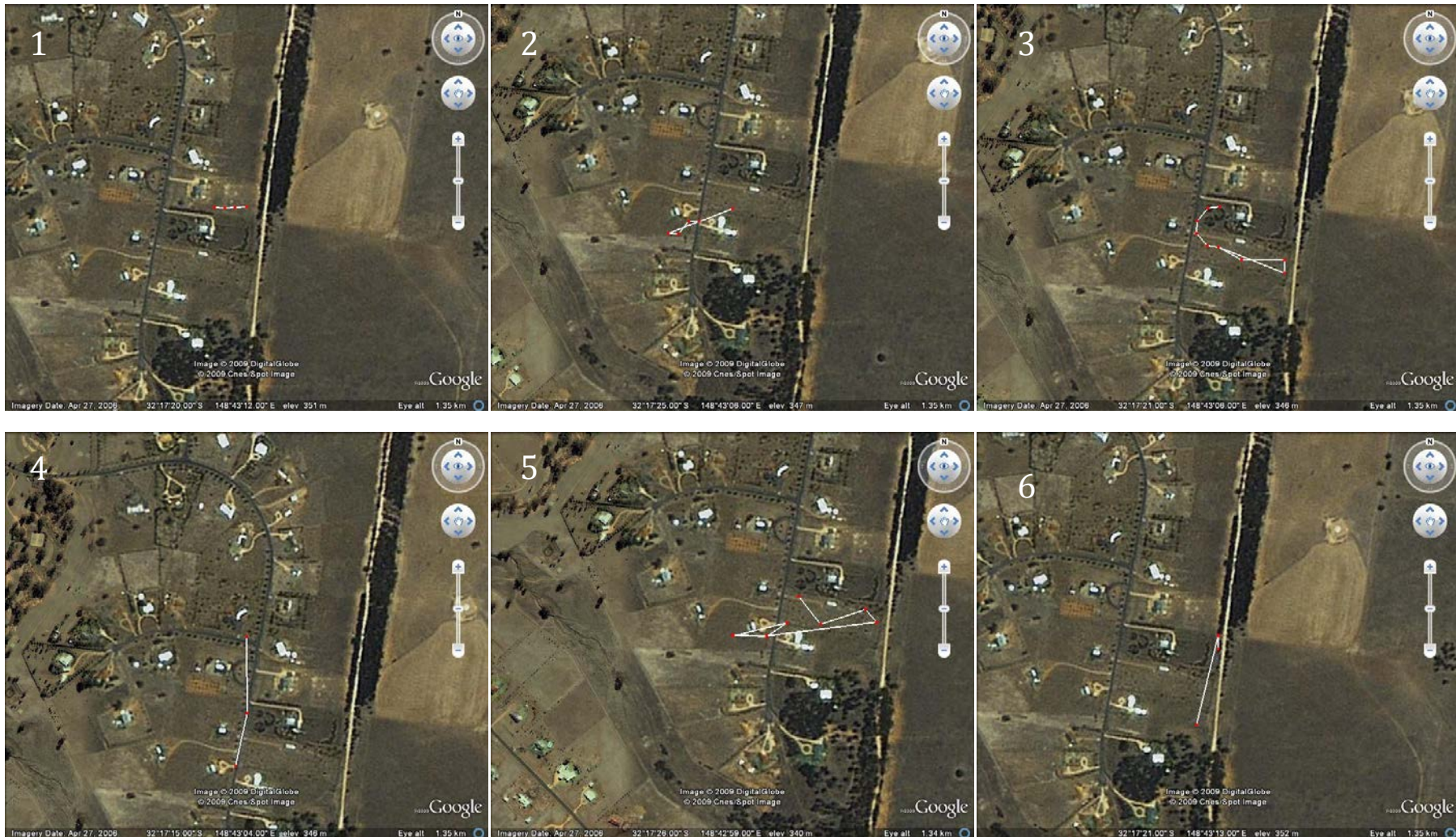
Beni 2 distance path. 1=406.70m (22/06/2009, 08:40-10:00), 2=679.27m (29/06/2009, 14:56-16:36), 3=450.48m (21/07/2009, 15:25-17:03), 4=493.30m (29/07/2009, 15:06-16:34), 5=415.03m (03/09/2009, 08:13-09:53), 6=1016.90m (16/08/2009, 08:12-09:58).



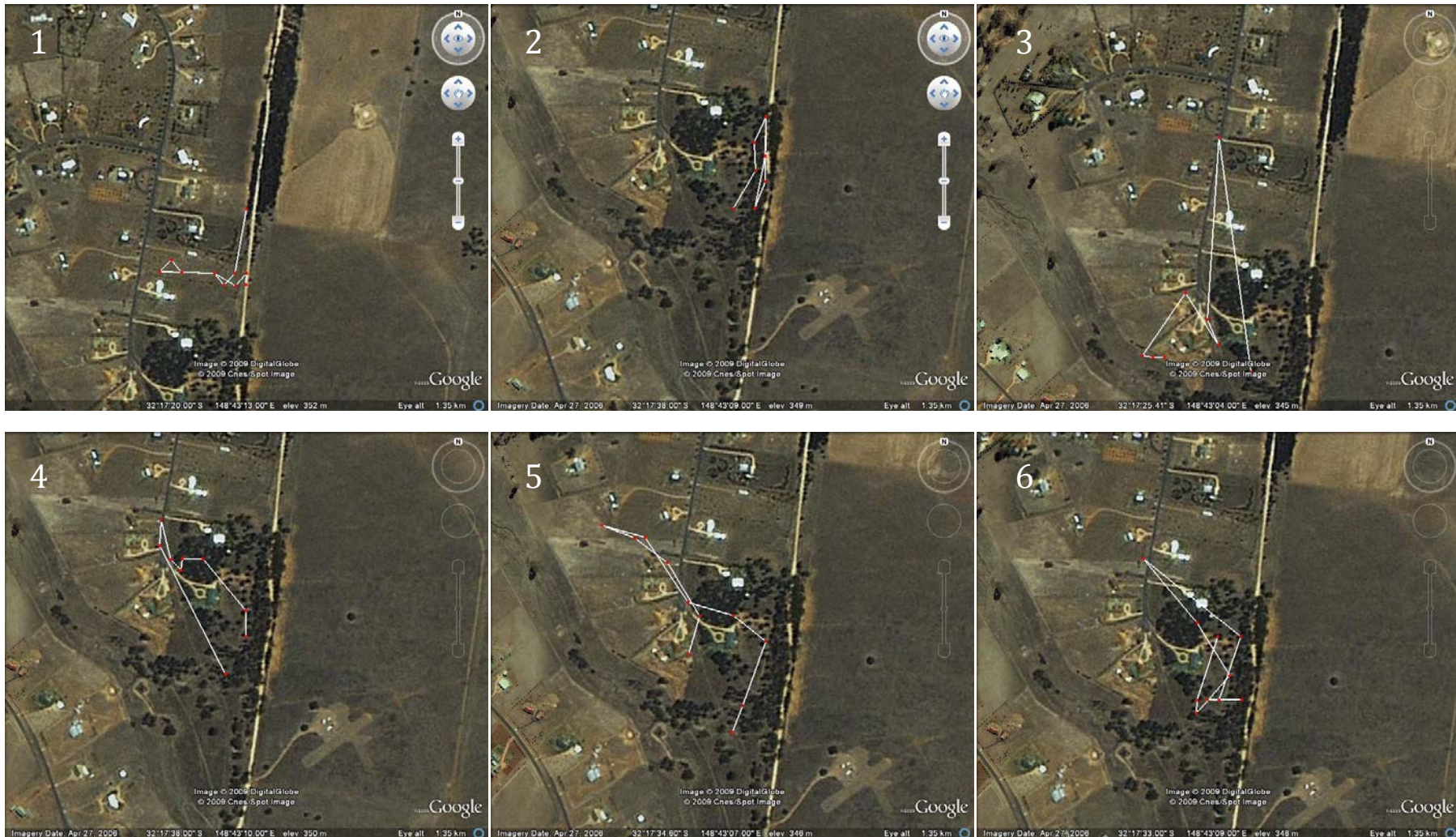
Cooreena Rd 1 distance paths. 1=638.08m (10/06/2009, 08:17-09:57), 2=816.76m (22/06/2009, 15:06-16:46), 3=193.38m (09/07/2009, 16:30-17:10), 4=561.08m (22/07/2009, 08:03-09:21), 5=426.08m (03/08/2009, 16:33-17:28), 6=522.85m (20/08/2009, 08:05-10:01).



Firgrove 1 distance paths. 1= 538.09m (12/06/2009, 15:49-16:58), 2= 696.90m (24/06/2009, 08:34-09:54), 3= 542.31m (07/07/2009, 15:06-16:46), 4=1115.16m (21/07/2009, 08:33-09:53), 5=803.50m (17/08/2009, 08:16-09:56), 6= 562.85m (26/08/2009, 15:00-16:40).



Firgrove 2 distance paths. 1=126.46m (16/06/2009, 16:09-17:09), 2=254.54m (30/06/2009, 08:56-09:56), 3=529.80m (16/07/2009, 15:09-16:51), 4= 310.53m (30/07/2009, 08:24-09:06), 5=851.39m (14/08/2009, 14:56-16:36), 6=283.38m (24/08/2009, 08:07-09:34).



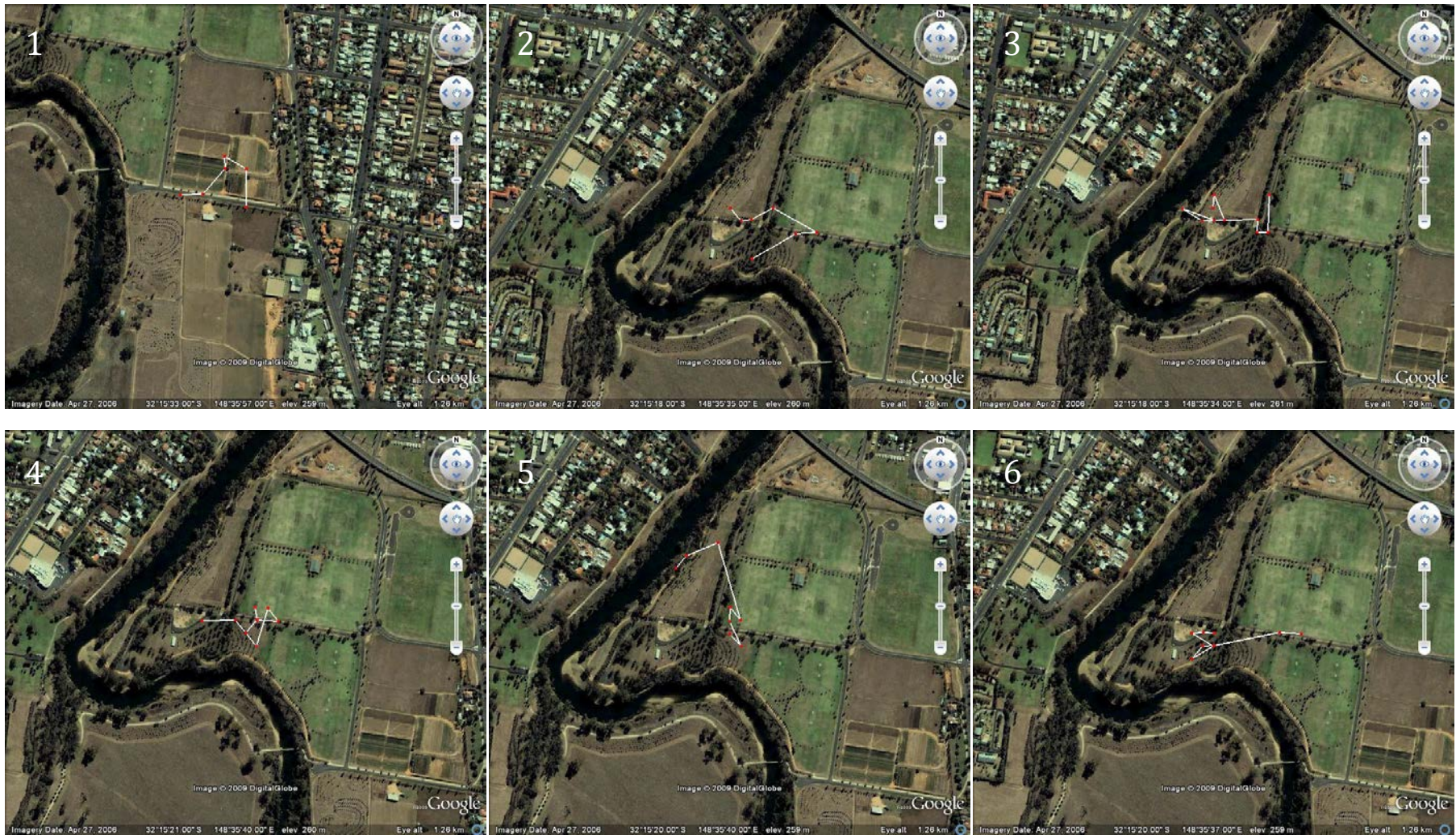
Firgrove 3 distance paths. 1=648.83m (11/06/2009, 15:20-16:48), 2=678.36m (23/06/2009, 14:56-16:36), 3=1443.35m (08/07/2009, 08:00-10:00), 4=839.25m (07/08/2009, 08:22-10:04), 5=1164.28m (18/08/2009, 15:23-17:01), 6=1228.43m (25/08/2009, 08:07-10:00).



Keswick Estate 1. 1=659-76m (09/06/2009, 15:18-16:58), 2=993.95m (21/06/2009, 08:10-09:50), 3=868.45m (07/07/2009, 08:20-10:00), 4=846.40m (23/07/2009, 14:57-16:37), 5=872.50m (05/08/2009, 08:07-09:46), 6=1172.42m (31/08/2009, 15:09-16:49).



Keswick Estate 2. 1=401.05m (20/06/2009, 15:20-17:00), 2=120.86m (23/06/2009, 08:16-09:51), 3=407.30m (08/07/2009, 15:00-16:40), 4=1030.68m (26/07/2009, 07:59-09:41), 5=699.66m (07/09/2009, 15:00-16:40), 6=697.40m (18/09/2009, 08:22-10:01).

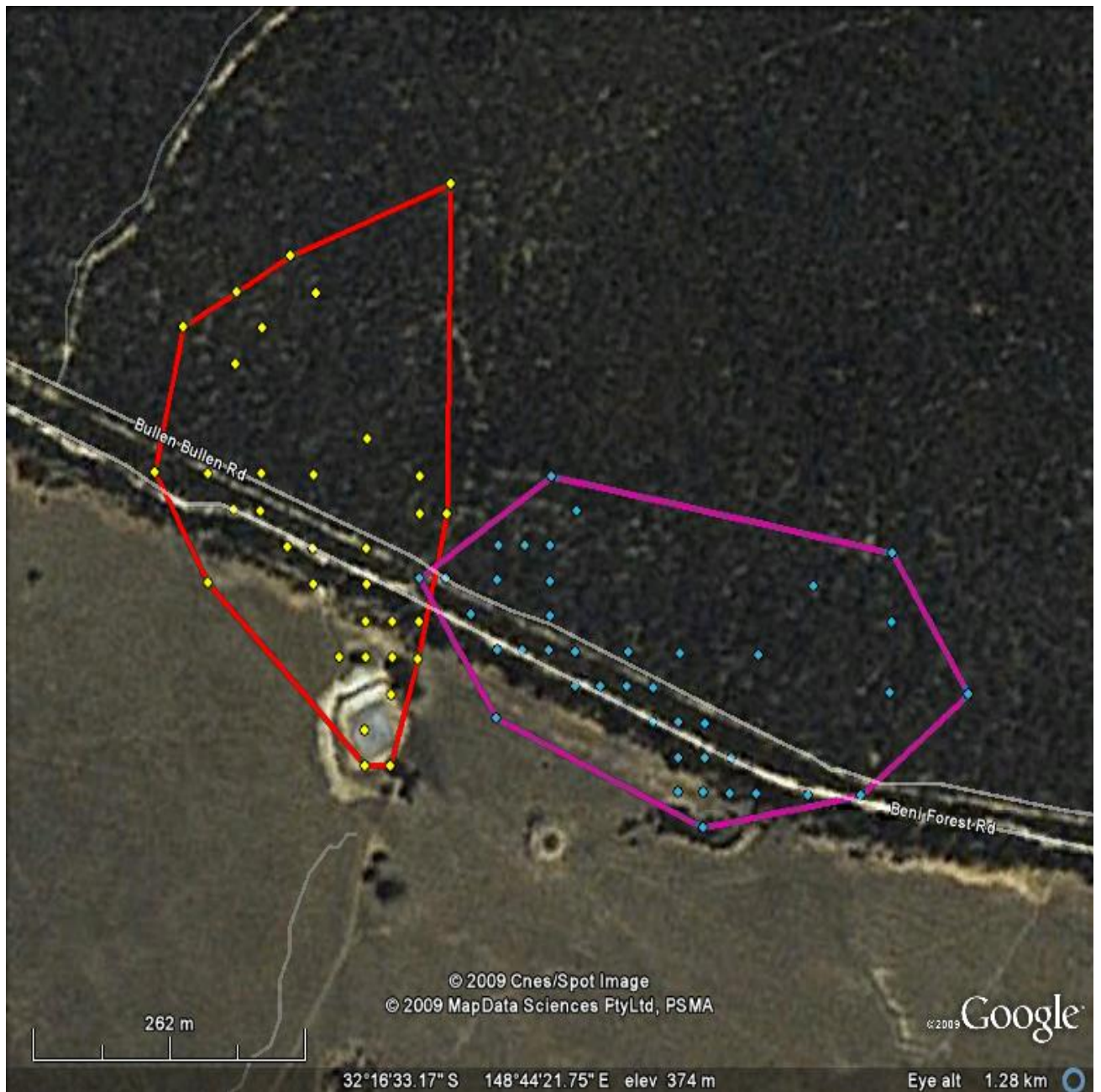


Lady Cutler Oval 1. 1=317.01m (13/06/2009, 09:20-10:10), 2=416.10m (17/06/2009, 14:55-16:35), 3=538.03m (17/07/2009, 07:09-08:48), 4=450.64m (30/07/2009, 14:51-16:31), 5=492.72m (14/08/2009, 07:28-09:08), 6=455.87m (24/08/2009, 15:09-16:49).



South Dubbo Oval 1. 1=747.71m (15/06/2009, 16:14-17:17), 2=449.25m (04/07/2009, 07:04-08:21), 3=120.58m (13/07/2009, 16:37-17:22), 4=782.14m (29/07/2009, 07:01-09:07), 5=482.25m (17/08/2009, 15:03-16:39), 6=363.74m (25/008/2009, 07:04-08:44).

Figure S2



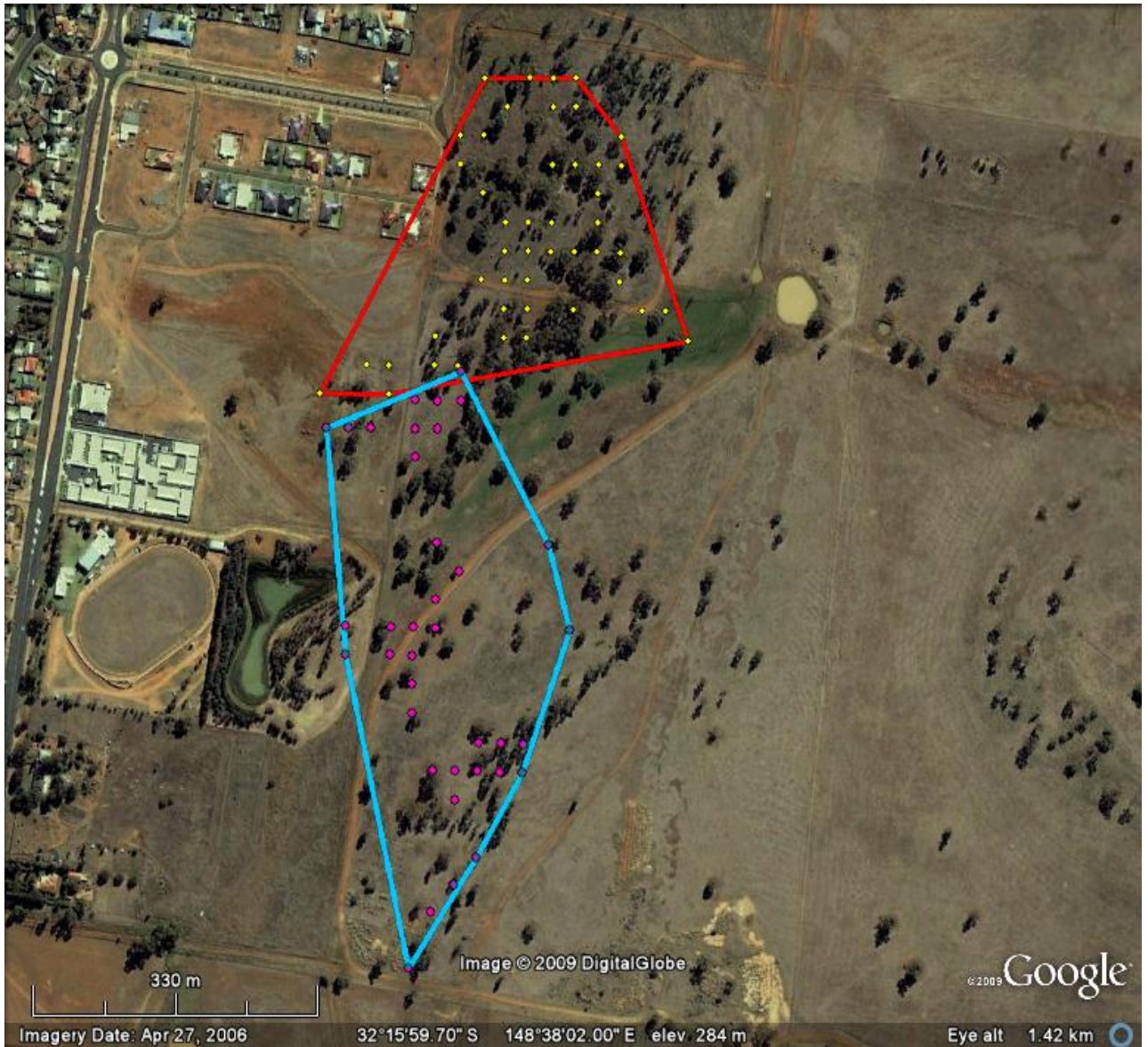
Beni 1 and Beni 2. Home ranges of natural habitats in Beni State Conservation Area. Beni 1 is on the right in pink (11.08ha) and Beni 2 is on the left in red (9.47ha).



Cooreena Rd1. Home range of Cooreena Rd 1 (15.24ha).



South Dubbo Oval 1. Home range of South Dubbo Oval 1 (65.00ha).



Keswick Estate 1 and Keswick Estate 2. Home ranges of Keswick estate 1 in the red at the top (8.54ha) and Keswick estate 2 in the blue at the bottom of the photograph (11.12ha).



Lady Cutler Oval 1. Home range of Lady Cutler Oval 1 (16.08ha).



Firgrove 1. Home range of Firgrove 1 (12.17ha).



Firgrove 2 and Firgrove 3. Home ranges of Firgrove 2 in the red (9.43ha) and Firgrove 3 in the green (25.30ha).