

10.1071/PC210009

Pacific Conservation Biology

Supplementary materials

A summer and winter's tale: factors influencing avian community composition and species abundances in fragmented lowland floodplain forests in central eastern Australia

Mark Fitzgerald^A, Simon Gorta^B and Robert M. Kooyman^{C,D}

^AMark Fitzgerald Ecological Consultant, Mullumbimby, NSW 2482, Australia.

^BCentre for Ecosystem Science, School of Biological, Earth and Environmental Sciences, University of New South Wales, NSW 2052, Australia.

^CDepartment of Biological Sciences, Macquarie University, NSW 2019, Australia.

^DCorresponding author. Email: robert.kooyman@mq.edu.au

Vegetation

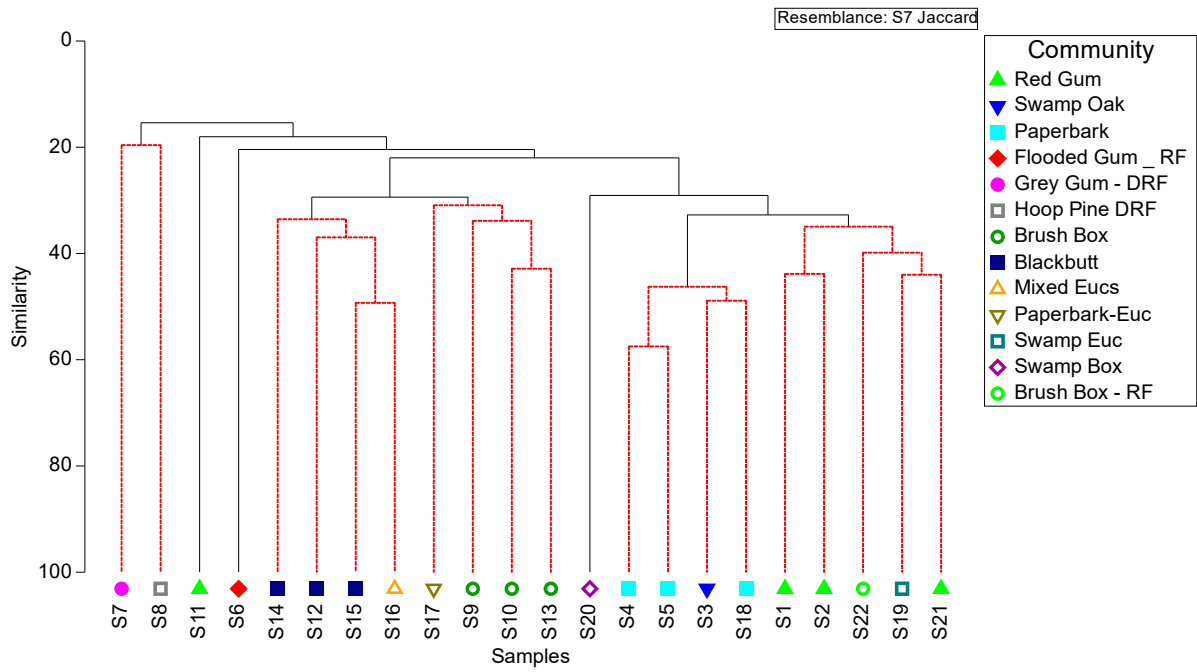


Figure S1. Dendrogram of 22 / 20 x 20m abundance-weighted vegetation samples from the location.

Supporting data (as Excel workbook) includes abundance-weighted floristic data, habitat features, size class distributions (trees >10 cm dbhob), and environmental variables. Data available on request.

Avian Taxonomy - checklist

Table S1. Taxonomic checklist with common and scientific names, genus, family.

Common Name	Species	Genus	Family
Australasian Figbird	<i>Sphecotheres vieilloti</i>	Sphecotheres	Oriolidae
Australian Brush-turkey	<i>Alectura lathamii</i>	Alectura	Megapodidae
Australian King Parrot	<i>Alisterus scapularis</i>	Alisterus	Psittacidae
Australian Magpie	<i>Cracticus tibicen</i>	Cracticus	Artamidae
Australian White Ibis	<i>Threskiornis molucca</i>	Threskiornis	Ardeidae
Barred Cuckoo-shrike	<i>Coracina lineata</i>	Coracina	Campephagidae
Bar-shouldered Dove	<i>Geopelia humeralis</i>	Geopelia	Columbidae
Black-faced Cuckoo-shrike	<i>Coracina novaehollandiae</i>	Coracina	Campephagidae
Black-faced Monarch	<i>Monarcha melanopsis</i>	Monarcha	Monarchidae
Blue-faced Honeyeater	<i>Entomyzon cyanotis</i>	Entomyzon	Meliphagidae
Brahminy Kite	<i>Haliastur indus</i>	Haliastur	Accipitridae
Brown Cuckoo-dove	<i>Macropygia phasianella</i>	Macropygia	Columbidae
Brown Gerygone	<i>Gerygone mouki</i>	Gerygone	Acanthizidae
Brown Goshawk	<i>Accipiter fasciatus</i>	Accipiter	Accipitridae
Brown Honeyeater	<i>Lichmera indistincta</i>	Lichmera	Meliphagidae
Brown Quail	<i>Synoicus ypsilophorus</i>	Synoicus	Phasianidae
Brown Thornbill	<i>Acanthiza pusilla</i>	Acanthiza	Acanthizidae
Brown Treecreeper	<i>Climacteris picumnus</i>	Climacteris	Climacteridae
Brush Cuckoo	<i>Cacomantis variolosus</i>	Cacomantis	Cuculidae
Channel-billed Cuckoo	<i>Scythrops novaehollandiae</i>	Scythrops	Cuculidae
Common Cicadabird	<i>Edolisoma tenuirostre</i>	Coracina	Campephagidae
Common Bronzewing	<i>Phaps chalcoptera</i>	Phaps	Columbidae
Common Myna	<i>Acridotheres tristis</i>	Acridotheres	Turdidae
Oriental Dollarbird	<i>Eurystomus orientalis</i>	Eurystomus	Coraciidae
Cattle Egret	<i>Bubulcus ibis</i>	Bubulcus	Ardeidae
Great Egret	<i>Ardea alba</i>	Ardea	Ardeidae
Eastern Koel	<i>Eudynamis scolopaceus</i>	Eudynamis	Cuculidae
Eastern Rosella	<i>Platycercus eximius</i>	Platycercus	Psittacidae
Eastern Spinebill	<i>Acanthorhynchus tenuirostris</i>	Acanthorhynchus	Meliphagidae
Eastern Whipbird	<i>Psophodes olivaceus</i>	Psophodes	Psophodidae
Eastern Yellow Robin	<i>Eopsaltria australis</i>	Eopsaltria	Petroicidae
Brown-capped Emerald-Dove	<i>Chalcophaps longirostris</i>	Chalcophaps	Columbidae
Fairy Martin	<i>Petrochelidon ariel</i>	Petrochelidon	Hirundinidae
Fan-tailed Cuckoo	<i>Cacomantis flabelliformis</i>	Cacomantis	Cuculidae
Fuscous Honeyeater	<i>Lichenostomus fuscus</i>	Lichenostomus	Meliphagidae
Galah	<i>Eolophus roseicapillus</i>	Cacatua	Cacatuidae
Golden Whistler	<i>Pachycephala pectoralis</i>	Pachycephala	Pachycephalidae
Great Cormorant	<i>Phalacrocorax carbo</i>	Phalacrocorax	Phalacrocoracidae
Green Catbird	<i>Ailuroedus crassirostris</i>	Ailuroedus	Ptilinorhynchidae
Grey Butcherbird	<i>Cracticus torquatus</i>	Cracticus	Artamidae
Grey Fantail	<i>Rhipidura albiscapa</i>	Rhipidura	Rhipiduridae

Grey Goshawk	<i>Accipiter novaehollandiae</i>	Accipiter	Accipitridae
Grey Shrike-thrush	<i>Colluricincla harmonica</i>	Colluricincla	Pachycephalidae
Horsfield's Bronze-Cuckoo	<i>Chalcites basalis</i>	Chalcites	Cuculidae
Large-billed Scrubwren	<i>Sericornis magnirostris</i>	Sericornis	Acanthizidae
Laughing Kookaburra	<i>Dacelo novaeguineae</i>	Dacelo	Alcedinidae
Leaden Flycatcher	<i>Myiagra rubecula</i>	Myiagra	Monarchidae
Lewin Honeyeater	<i>Meliphaga lewinii</i>	Meliphaga	Meliphagidae
Little Bronze Cuckoo	<i>Chalcites minutillus</i>	Chalcites	Cuculidae
Little Button-quail	<i>Turnix velox</i>	Turnix	Turnicidae
Little Corella	<i>Cacatua sanguinea</i>	Cacatua	Cacatuidae
Little Lorikeet	<i>Glossopsitta pusilla</i>	Glossopsitta	Psittacidae
Little Shrike-thrush	<i>Colluricincla megarhyncha</i>	Colluricincla	Pachycephalidae
Little Wattlebird	<i>Anthochaera chrysoptera</i>	Anthochaera	Meliphagidae
Logrunner	<i>Orthonyx temminckii</i>	Orthonyx	Orthonychidae
Magpie-lark	<i>Grallina cyanoleuca</i>	Grallina	Monarchidae
Masked Lapwing	<i>Vanellus miles</i>	Vanellus	Charadriidae
Mistletoebird	<i>Dicaeum hirundinaceum</i>	Dicaeum	Dicaeidae
New Holland Honeyeater	<i>Phylidonyris novaehollandiae</i>	Phylidonyris	Meliphagidae
Noisy Friarbird	<i>Philemon corniculatus</i>	Philemon	Meliphagidae
Noisy Miner	<i>Manorina melanocephala</i>	Manorina	Meliphagidae
Noisy Pitta	<i>Pitta versicolor</i>	Pitta	Pittidae
Olive-backed Oriole	<i>Oriolus sagittatus</i>	Oriolus	Oriolidae
Oriental Cuckoo	<i>Cuculus optatus</i>	Cuculus	Cuculidae
Owlet Nightjar	<i>Aegotheles criatus</i>	Aegotheles	Aegothelidae
Pacific Baza	<i>Aviceda subcristata</i>	Aviceda	Accipitridae
Pale Yellow Robin	<i>Tregallasia capito</i>	Tregallasia	Petroicidae
Pallid cuckoo	<i>Cacomantis pallidus</i>	Cacomantis	Cuculidae
Peaceful Dove	<i>Geopelia striata</i>	Geopelia	Columbidae
Pheasant Coucal	<i>Centropus phasianinus</i>	Centropus	Centropodidae
Pied Butcherbird	<i>Cracticus nigrogularis</i>	Cracticus	Artamidae
Pied Currawong	<i>Strepera graculina</i>	Strepera	Artamidae
Rainbow Bee-eater	<i>Merops ornatus</i>	Merops	Meropidae
Rainbow Lorikeet	<i>Trichoglossus haematodus</i>	Trichoglossus	Psittacidae
Red Wattlebird	<i>Anthochaera carunculata</i>	Anthochaera	Meliphagidae
Red-backed Fairy-wren	<i>Malurus melanocephalus</i>	Malurus	Maluridae
Red-browed Finch	<i>Neochmia temporalis</i>	Neochmia	Estrildidae
Regent Bowerbird	<i>Sericulus chrysocephalus</i>	Sericulus	Ptilinorhynchidae
Restless Flycatcher	<i>Myiagra inquieta</i>	Myiagra	Monarchidae
Rose Robin	<i>Petroica rosea</i>	Petroica	Petroicidae
Rose-crowned Fruit-dove	<i>Ptilinopus regina</i>	Ptilinopus	Columbidae
Rufous Fantail	<i>Rhipidura rufifrons</i>	Rhipidura	Rhipiduridae
Rufous Whistler	<i>Pachycephala rufiventris</i>	Pachycephala	Pachycephalidae
Sacred Kingfisher	<i>Todiramphus sanctus</i>	Todiramphus	Alcedinidae
Satin Bowerbird	<i>Ptilinorhynchus volaceus</i>	Ptilinorhynchus	Ptilinorhynchidae
Satin Flycatcher	<i>Myiagra cyanoleuca</i>	Myiagra	Monarchidae
Scaly-breasted Lorikeet	<i>Trichoglossus chlorolepidotus</i>	Trichoglossus	Psittacidae

Scarlet Honeyeater	<i>Myzomela sanguinolenta</i>	Myzomela	Meliphagidae
Shining Bronze Cuckoo	<i>Chalcites lucidus</i>	Chalcites	Cuculidae
Silvereye	<i>Zosterops lateralis</i>	Zosterops	Zosteropidae
Southern Boobook	<i>Ninox boobook</i>	Ninox	Strigidae
Spangled Drongo	<i>Dicrurus bracteatus</i>	Dicrurus	Dicruridae
Spectacled Monarch	<i>Symposiachrus trivirgatus</i>	Symposiarchus	Monarchidae
Spotted Pardalote	<i>Pardalotus punctatus</i>	Pardalotus	Pardalotidae
Straw-necked Ibis	<i>Threskiornis spinicollis</i>	Threskiornis	Ardeidae
Striated Pardalote	<i>Pardalotus striatus</i>	Pardalotus	Pardalotidae
Striated Thornbill	<i>Acanthiza lineata</i>	Acanthiza	Acanthizidae
Striped Honeyeater	<i>Plectorhyncha lanceolata</i>	Plectorhyncha	Meliphagidae
Sulphur-crested Cockatoo	<i>Cacatua galerita</i>	Cacatua	Cacatuidae
Superb Fairy Wren	<i>Malurus cyaneus</i>	Malurus	Maluridae
Tawny Grassbird	<i>Megalurus timoriensis</i>	Megalurus	Locustellidae
Top-knot Pigeon	<i>Lopholaimus antarcticus</i>	Lopholaimus	Columbidae
Torresian Crow	<i>Corvus orru</i>	Corvus	Corvidae
Varied Triller	<i>Lalage leucomela</i>	Lalage	Campephagidae
Variegated Fairy-wren	<i>Malurus lamberti</i>	Malurus	Maluridae
Welcome Swallow	<i>Hirundo neoxena</i>	Hirundo	Hirundinidae
Whistling Kite	<i>Haliastur sphenurus</i>	Haliastur	Accipitridae
White-bellied Cuckoo-shrike	<i>Coracina papuensis</i>	Coracina	Campephagidae
White-bellied Sea-eagle	<i>Haliaeetus leucogaster</i>	Haliaeetus	Accipitridae
White-breasted Wood Swallow	<i>Artamus leucoryn</i>	Artamus	Artamidae
White-browed Scrubwren	<i>Sericornis frontalis</i>	Sericornis	Acanthizidae
White-cheeked Honeyeater	<i>Phylidonyris niger</i>	Phylidonyris	Meliphagidae
White-eared Monarch	<i>Carterornis leucotis</i>	Carterornis	Monarchidae
White-faced Heron	<i>Egretta novaehollandiae</i>	Egretta	Ardeidae
White-headed Pigeon	<i>Columba leucomela</i>	Columba	Columbidae
White-throated Gerygone	<i>Gerygone olivacea</i>	Gerygone	Acanthizidae
White-throated Honeyeater	<i>Melithreptus albogularis</i>	Melithreptus	Meliphagidae
White-throated Needletail	<i>Hirundapus caudacutus</i>	Hirundapus	Apodidae
White-throated Nightjar	<i>Eurostopodus mystacalis</i>	Eurostopodus	Caprimulgidae
White-throated Treecreeper	<i>Cormobates leucophaeus</i>	Cormobates	Climacteridae
Willie Wagtail	<i>Rhipidura leucophrys</i>	Rhipidura	Rhipiduridae
Wompoo Fruit Dove	<i>Megaloprepia magnifica</i>	Megaloprepia	Columbidae
Wonga Pigeon	<i>Leucosarcia melanoleuca</i>	Leucosarcia	Columbidae
Yellow-faced Honeyeater	<i>Caligavis chrysops</i>	Caligavis	Meliphagidae
Yellow-tailed Black Cockatoo	<i>Zanda funerea</i>	Zanda	Cacatuidae

Average Taxonomic Distinctness

Average taxonomic distinctness is known to be orthogonal to richness and, importantly, is unaffected by either sample size or sampling effort. The measure (AvTD) describes the relatedness of taxa within a sample at a given richness and uses a simple taxonomic (relatedness) tree with equalized branch lengths, based on the background list of species, genera and families. Expected values at a given richness represent a null (no taxonomic structure) derived from 1000 random draws from the available pool of species. Lower values (outside the 95% confidence intervals [CIs] for average taxonomic distinctness in relation to random draws from the full pool occur when species assemblages have lower taxonomic breadth at a level of richness than expected under a null model (i.e., species are more related than expected by chance i.e., they are clustered). Higher values reflect greater taxonomic breadth at a given richness in relation to the null and equate with overdispersion or evenness (i.e., species are less related than by chance). Primer v7 was used to undertake the initial multivariate analyses and generate the presented ordinations (Clarke and Gorley 2015).

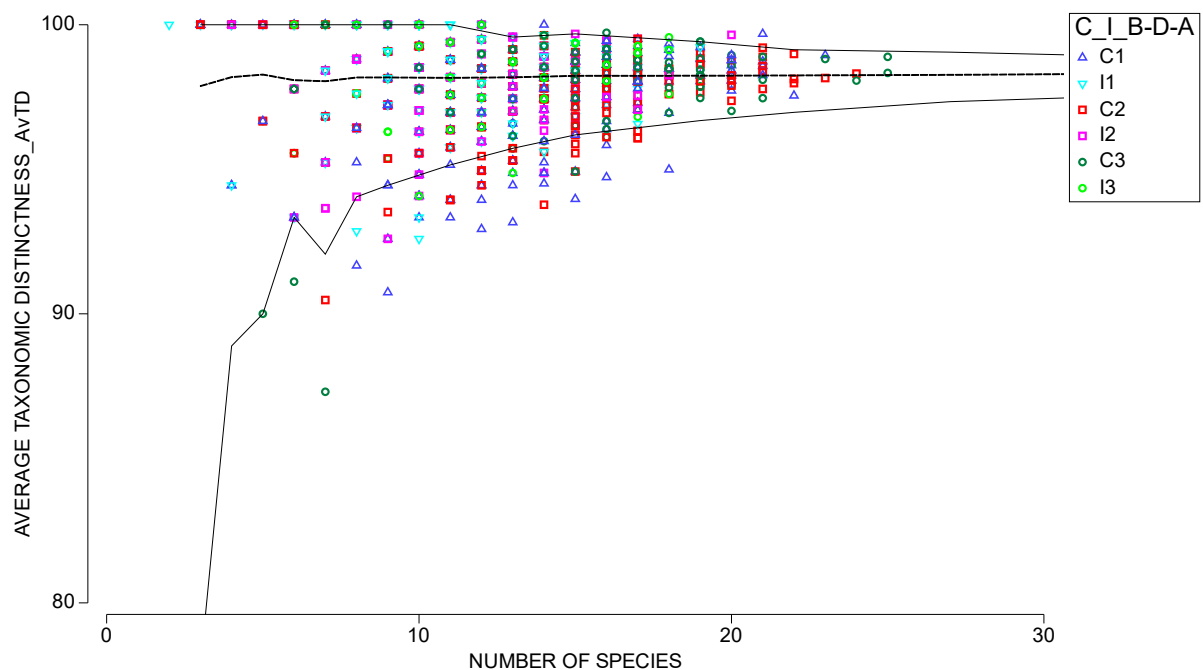


Figure S2.1. Average Taxonomic Distinctness of summer-winter avian assemblage samples. C1 – control transect ‘Before’ (dark blue triangle), I1 – impact (light blue triangle); C2 – control transect ‘During’ (red square), I2 – impact (pink square); C3 – control transect ‘After’ (dark green circle), I3 – impact (light green circle).

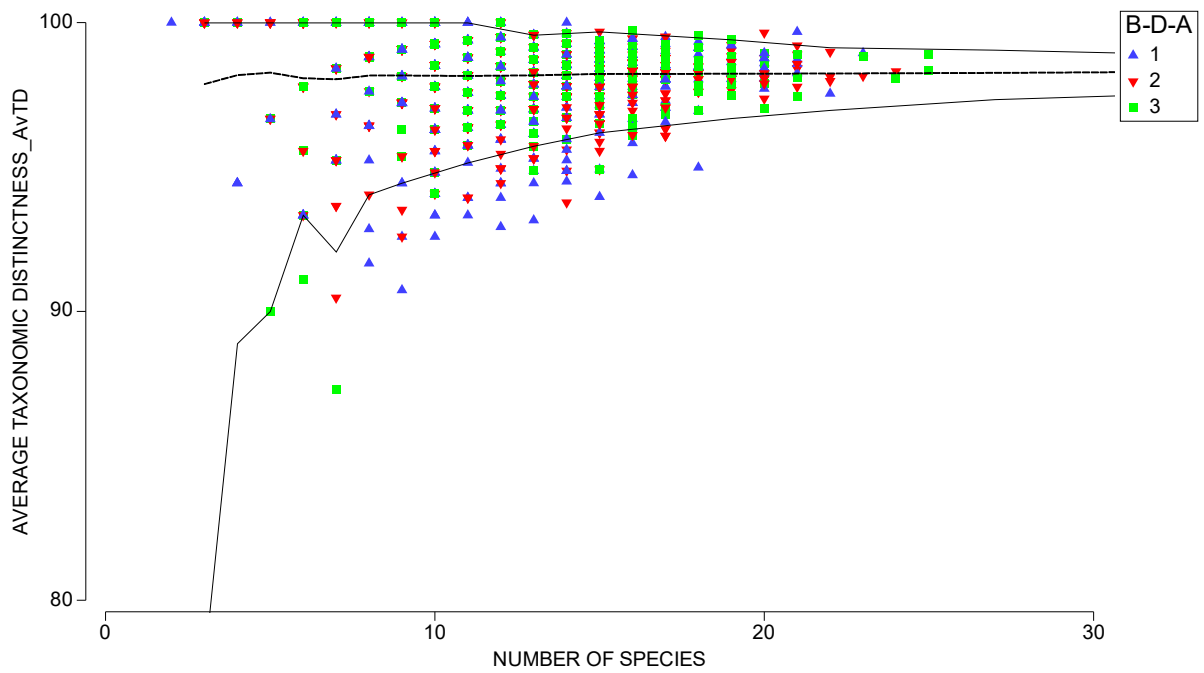


Figure S2.2. Average Taxonomic Distinctness of summer-winter avian assemblage samples showing 'Before' (dark blue triangle), 'During' (red triangle), 'After' (light green square).

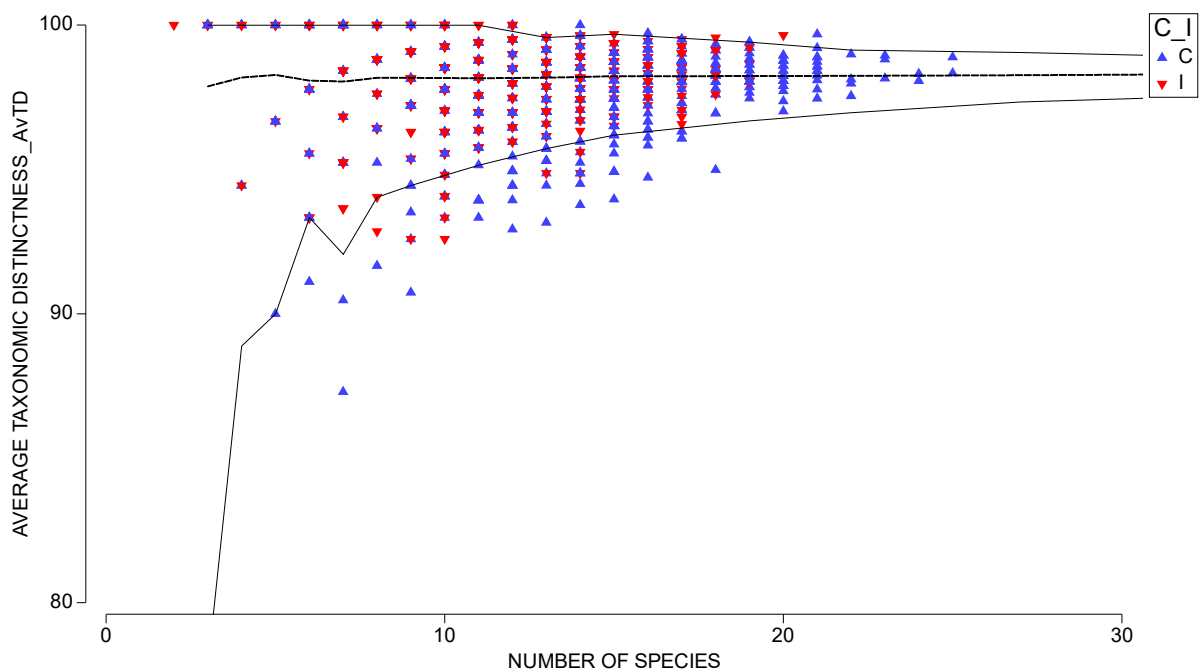


Figure S2.3. Average Taxonomic Distinctness of summer-winter avian assemblage samples. C – control transect samples (dark blue triangle), I – impact (red triangle).

Table S2. Univariate tests of bird species for the effects of inter-year (Year) and summer-winter (Season) variation, control vs. impact (event disturbance), Before -During-After (BDA) (timing relative to disturbance), and the interaction between before-during-after and control vs. impact on abundance of bird species. These tests were run in ‘mvabund’ using the ‘p.uni = adjusted’ function which calculates univariate results of a multivariate analysis of variance with corrected *P*-values (Holm) for multiple hypothesis testing. Values have statistical support for a difference from the null when $P < 0.1$, and include those with weak ($0.05 \geq P < 0.1$) and stronger ($P < 0.05$) statistical support described in the presentation of results.

Species	Year		Season		Control-Impact		Before-During-After		Control-Impact * Before-During-After	
	<i>Deviance</i>	<i>P</i>	<i>Deviance</i>	<i>P</i>	<i>Deviance</i>	<i>P</i>	<i>Deviance</i>	<i>P</i>	<i>Deviance</i>	<i>P</i>
Australasian Figbird	16.575	0.003	25.923	0.001	13.81	0.053	0.128	1	3.373	1
Australian Brush-turkey	0.72	1	8.776	0.133	14.112	0.051	3.495	1	23.64	0.021
Australian Golden Whistler	5.688	0.715	4.582	0.862	0.008	1	1.616	1	0.158	1
Australian King-parrot	8.502	0.274	38.576	0.001	7.844	0.4	29.473	0.01	2.26	1
Australian Magpie	1.875	1	2.403	0.996	0.717	1	0.197	1	1.55	1
Australian Owlet-nightjar	1.318	1	1.992	1	1.04	1	3.137	1	0.011	1

Australian White Ibis	2.689	1	0.206	1	1.132	1	1.45	1	2.622	1
Barred Cuckoo-shrike	1.751	1	5.794	0.608	0.164	1	11.051	0.381	0	1
Bar-shouldered Dove	1.21	1	0.269	1	48.195	0.001	0.353	1	0.603	1
Black-faced Cuckoo-shrike	14.91	0.006	0.031	1	1.781	1	10.817	0.411	4.165	0.999
Black-faced Monarch	0.026	1	0.04	1	0.057	1	7.718	0.877	0.356	1
Blue-faced Honeyeater	0.078	1	3.167	0.989	0.048	1	1.689	1	2.652	1
Brahminy Kite	4.494	0.953	0.537	1	1.007	1	2.164	1	0.013	1
Brown Cuckoo-dove	0.845	1	3.297	0.976	28.86	0.005	0.809	1	0.35	1
Brown Gerygone	0.182	1	2.85	0.992	0.192	1	2.608	1	0.515	1
Brown Goshawk	0.231	1	17.448	0.001	0.064	1	4.001	1	10.033	0.49
Brown Honeyeater	1.16	1	14.154	0.015	2.296	1	5.726	0.995	2.268	1
Brown Quail	0	1	1.207	1	1.025	1	2.172	1	0.006	1
Brown Thornbill	20.45	0.001	93.595	0.001	32.103	0.004	1.766	1	2.615	1
Brown Treecreeper	0.197	1	6.349	0.477	0.667	1	1.172	1	4.378	0.999
Brush Cuckoo	1.017	1	57.099	0.001	1.062	1	2.281	1	0.151	1
Channel-billed Cuckoo	41.55	0.001	97.158	0.001	0.632	1	0.566	1	3.476	1
Common Bronzewing	2.483	1	2.203	0.998	2.051	1	1.587	1	0.003	1
Common Cicadabird	0.062	1	221.11	0.001	0.077	1	106.212	0.001	1.526	1
Common Myna	0	1	1.581	1	1.826	1	2.23	1	0.009	1

Eastern Cattle Egret	0.227	1	1.61	1	1.007	1	1.905	1	0.006	1
Eastern Rosella	8.058	0.365	40.655	0.001	2.39	1	43.984	0.001	1.437	1
Eastern Spinebill	35.66	0.001	55.673	0.001	41.313	0.002	15.627	0.094	3.785	1
Eastern Whipbird	0.226	1	65.261	0.001	121.719	0.001	1.37	1	6.275	0.973
Eastern Yellow Robin	0.332	1	4.77	0.835	1.703	1	11.889	0.306	1.075	1
Emerald Dove	1.222	1	104.907	0.001	1.146	1	28.209	0.014	1.124	1
Fairy Martin	1.562	1	1.07	1	1.823	1	2.203	1	0.013	1
Fan-tailed Cuckoo	0.083	1	12.265	0.027	5.307	0.867	2.228	1	1.602	1
Fuscous Honeyeater	4.494	0.956	0.537	1	1.007	1	2.164	1	0.013	1
Galah	0.005	1	3.971	0.918	2.957	1	1.177	1	0.975	1
Great Cormorant	1.242	1	1.74	1	0.995	1	1.583	1	0.006	1
Great Egret	110.688	0.001	73.4	0.001	0.012	1	7.289	0.91	1.827	1
Green Catbird	0	1	1.584	1	1.021	1	2.275	1	0.008	1
Grey Butcherbird	7.471	0.430	32.541	0.001	0.519	1	22.964	0.026	3.001	1
Grey Fantail	3.245	1	269.424	0.001	0.793	1	81.786	0.001	2.905	1
Grey Goshawk	3.116	1	0.101	1	1.236	1	11.364	0.352	1.527	1
Grey Shrike-thrush	0.446	1	70.657	0.001	7.704	0.421	18.925	0.047	0.477	1
Horsfield's Bronze-cuckoo	0.06	1	0.376	1	3.085	0.998	2.886	1	0.002	1
Large-billed Scrubwren	2.249	1	5.459	0.669	0.837	1	0.365	1	5.014	0.998

Laughing Kookaburra	0.362	1	68.872	0.001	1.361	1	12.021	0.293	2.474	1
Leaden Flycatcher	1.074	1	134.986	0.001	5.565	0.807	36.584	0.002	3.955	1
Lewin's Honeyeater	7.238	0.466	291.897	0.001	1.765	1	59.326	0.001	1.292	1
Little Bronze-cuckoo	4.388	0.964	2.44	0.996	0.019	1	0.019	1	9.45	0.579
Little Buttonquail	0	1	1.207	1	1.025	1	2.22	1	0.006	1
Little Corella	26.251	0.001	51.082	0.001	3.485	0.997	3.368	1	13.708	0.193
Little Lorikeet	0.096	1	4.55	0.817	7.168	0.542	5.484	0.994	0.003	1
Little Shrike-thrush	0.972	1	2.295	0.998	12.248	0.089	3.734	1	2.327	1
Little Wattlebird	0.459	1	36.079	0.001	18.023	0.027	10.356	0.465	1.254	1
Logrunner	1.518	1	0.644	1	28.458	0.005	1.103	1	0.257	1
Magpie-lark	1.395	1	6.799	0.414	3.515	0.997	5.458	0.995	7.167	0.909
Masked Lapwing	1.409	1	1.804	1	4.904	0.920	9.397	0.623	3.747	1
Mistletoebird	1.283	1	2.34	0.998	0.407	1	3.731	1	3.028	1
New Holland Honeyeater	0	1	1.208	1	1.026	1	2.227	1	0.007	1
Noisy Friarbird	26.706	0.001	5.177	0.730	73.661	0.001	5.455	0.995	7.5	0.887
Noisy Miner	1.753	1	5.481	0.669	1.74	1	8.16	0.819	2.972	1
Noisy Pitta	1.895	1	4.552	0.863	4.097	0.975	0.462	1	0	1
Olive-backed Oriole	3.222	1	10.433	0.069	5.051	0.918	0.231	1	1.793	1
Oriental Cuckoo	8.287	0.351	10.136	0.082	0.002	1	13.03	0.204	2.081	1

Oriental Dollarbird	11.388	0.071	101.502	0.001	1.892	1	4.786	0.998	4.645	0.999
Pacific Baza	9.105	0.174	16.375	0.004	1.139	1	12.872	0.215	0.663	1
Pacific Koel	0.01	1	102.615	0.001	1.195	1	11.233	0.365	6.078	0.98
Pale Yellow Robin	13.574	0.016	0.06	1	0.747	1	2.021	1	3.639	1
Pallid Cuckoo	0.553	1	0.022	1	3.668	0.986	4.861	0.997	0.007	1
Peaceful Dove	1.575	1	5.049	0.761	80.471	0.001	4.711	0.999	1.807	1
Pheasant Coucal	1.798	1	9.952	0.085	0.124	1	1.997	1	4.812	0.998
Pied Butcherbird	2.574	1	2.996	0.991	9.986	0.191	6.292	0.98	3.204	1
Pied Currawong	3.127	1	2.34	0.998	0.064	1	0.762	1	1.654	1
Rainbow Bee-eater	13.511	0.016	21.631	0.001	17.797	0.028	17.968	0.055	3.332	1
Rainbow Lorikeet	16.781	0.003	48.153	0.001	3.346	0.997	17.581	0.064	6.401	0.969
Red Wattlebird	0.046	1	0.004	1	0.023	1	2.538	1	4.105	0.999
Red-backed Fairywren	0.3	1	1.161	1	1.821	1	2.187	1	0.008	1
Red-browed Finch	1.349	1	0.832	1	0.008	1	0.351	1	0.2	1
Regent Bowerbird	0.608	1	6.683	0.423	12.457	0.084	0.244	1	0	1
Restless Flycatcher	0.622	1	0.006	1	0.351	1	3.687	1	0.586	1
Rose Robin	5.776	0.694	10.034	0.084	5.31	0.867	10.257	0.480	1.167	1
Rose-crowned Fruit-dove	0.221	1	44.487	0.001	0.421	1	3.692	1	3.43	1
Rufous Fantail	0.387	1	2.856	0.992	10.517	0.157	0.809	1	3.252	1

Rufous Whistler	5.557	0.726	4.985	0.764	38.195	0.002	53.491	0.001	1.953	1
Sacred Kingfisher	0	1	113.716	0.001	6.698	0.591	11.211	0.365	0.72	1
Satin Bowerbird	1.265	1	4.685	0.859	0.102	1	3.278	1	5.541	0.993
Satin Flycatcher	0.296	1	0.044	1	0.411	1	0.585	1	5.2	0.998
Scaly-breasted Lorikeet	8.008	0.366	10.781	0.06	22.506	0.011	0.675	1	7.995	0.84
Scarlet Myzomela	0.366	1	662.96	0.001	22.704	0.01	38.178	0.002	8.876	0.703
Shining Bronze-cuckoo	4.405	0.964	17.896	0.001	1.156	1	15.993	0.089	0.388	1
Silvereye	1.806	1	47.876	0.001	2.2	1	7.539	0.895	0.078	1
Southern Boobook	0.899	1	3.485	0.967	5.473	0.832	6.578	0.967	0.011	1
Spangled Drongo	1.797	1	205.922	0.001	0.375	1	17.99	0.055	2.93	1
Spectacled Monarch	0.725	1	3.779	0.932	7.588	0.425	28.801	0.013	6.13	0.977
Spotted Pardalote	1.239	1	54.368	0.001	5.748	0.772	3.05	1	0.79	1
Straw-necked Ibis	5.057	0.836	2.009	0.999	3.693	0.986	1.65	1	0.006	1
Striated Pardalote	1.124	1	97.08	0.001	0.12	1	1.133	1	6.399	0.969
Striated Thornbill	10.288	0.11	0.372	1	2.402	1	6.365	0.978	1.302	1
Striped Honeyeater	1.242	1	1.74	1	0.995	1	1.583	1	0.006	1
Sulphur-crested Cockatoo	2.734	1	1.506	1	12.803	0.074	5.059	0.997	0.674	1
Superb Fairywren	0.01	1	1.429	1	0.252	1	3.428	1	1.478	1
Tawny Grassbird	0.399	1	0.16	1	3.08	0.999	0.001	1	0	1

Topknot Pigeon	1.337	1	17.021	0.001	2.757	1	6.866	0.955	1.449	1
Torresian Crow	13.255	0.019	0.576	1	0.899	1	11.944	0.301	7.857	0.846
Varied Triller	9.23	0.169	0.884	1	0.852	1	4.193	1	0.367	1
Variegated Fairywren	0	1	1.149	1	20.746	0.018	1.002	1	0.104	1
Welcome Swallow	3.757	0.997	0.552	1	9.222	0.248	0.569	1	0	1
Whistling Kite	4.494	0.949	0.537	1	1.007	1	2.18	1	0.011	1
White-bellied Cuckoo-shrike	17.92	0.002	2.691	0.993	1.831	1	19.379	0.040	0.661	1
White-bellied Sea-eagle	1.374	1	1.109	1	22.969	0.01	3.39	1	3.701	1
White-breasted Woodswallow	4.494	0.958	2.84	0.992	1.1	1	0.02	1	0.011	1
White-browed Scrubwren	29.039	0.001	2.095	0.998	31.446	0.005	0.596	1	0.578	1
White-cheeked Honeyeater	1.353	1	0.21	1	37.992	0.002	9.362	0.623	13.923	0.183
White-eared Monarch	0.057	1	13.392	0.017	0.009	1	1.491	1	2.612	1
White-faced Heron	4.158	0.984	2.036	0.999	1.811	1	1.836	1	0.016	1
White-headed Pigeon	7.867	0.384	46.966	0.001	0.001	1	2.672	1	0.384	1
White-throated Gerygone	11.195	0.079	5.634	0.643	8.87	0.292	5.786	0.995	1.547	1
White-throated Honeyeater	26.509	0.001	1.287	1	2.834	1	0	1	6.919	0.934
White-throated Needle-tail	3.308	1	29.124	0.001	1.806	1	1.449	1	2.102	1
White-throated Nightjar	0	1	1.581	1	1.826	1	2.341	1	0.009	1
White-throated Treecreeper	23.033	0.001	0.466	1	36.98	0.002	0.147	1	0.082	1

Willie Wagtail	0.018	1	0.173	1	61.588	0.001	0.888	1	1.891	1
Wompoo Fruit-dove	2.483	1	2.203	0.998	0.079	1	4.373	1	0	1
Wonga Pigeon	1.438	1	5.486	0.647	0.669	1	3.384	1	1.839	1
Yellow-faced Honeyeater	0.335	1	363.029	0.001	10.81	0.147	131.646	0.001	5.456	0.995
Yellow-tailed Black-cockatoo	0	1	0.003	1	0.333	1	2.084	1	12.71	0.193
