

# Phylogenetics of the skyhoppers (*Kosciuscola*) of the Australian Alps: evolutionary and conservation implications

Kate DL Umbers<sup>A,B,J</sup>, Rachel A Slatyer<sup>C</sup>, Nikolai J Tatarnic<sup>D,E</sup>, Giselle R Muschett<sup>F,G</sup>, Shichen Wang<sup>H</sup> and Hojun Song<sup>1</sup>

<sup>A</sup>School of Science, Western Sydney University, Penrith, NSW 2751, Australia.

<sup>B</sup>Hawkesbury Institute for the Environment, Western Sydney University, Penrith, NSW 2751, Australia.

<sup>C</sup>Division of Ecology & Evolution, Research School of Biology, The Australian National University, Canberra, ACT, Australia.

<sup>D</sup>Collections and Research, Western Australian Museum, 49 Kew St, Welshpool, WA 6106, Australia.

<sup>E</sup>Centre for Evolutionary Biology, University of Western Australia, Crawley, WA 6009, Australia.

<sup>F</sup>Department of Biological Sciences, Macquarie University, North Ryde, NSW, 2109, Australia.

<sup>G</sup>Vicerrectoría de Investigación, Pontificia Universidad Católica de Valparaíso, Valparaíso, Chile.

<sup>H</sup>Texas A&M AgriLife Research: Genomics and Bioinformatics Service, College Station, TX, USA.

<sup>1</sup>Department of Entomology, Texas A&M University, College Station, TX, USA.

<sup>J</sup>Corresponding author. Email: [k.umbers@westernsydney.edu.au](mailto:k.umbers@westernsydney.edu.au)

**Table S1** Sampling locations for this study, latitude and longitude is in decimal degrees, including (A) raw read file names and sample IDs, and (B) Genbank accession numbers for mitochondrial genes.

**Table S1A**

| Sample ID         | Genus              | Species        | Population | Collecting locality                                  | Raw Read File R1                            | Raw Read File R2                            | BioSample ID |
|-------------------|--------------------|----------------|------------|--|---|---|--------------|
| TAMUIC-IGC-001774 | <i>Kosciuscola</i> | <i>tristis</i> | BawBaw     | Australia: BawBaw, St Gwinear (-37.83347, 146.30814) | TAMUIC_IGC_001774_S15_L001_R1_001.fastq.gz  | TAMUIC_IGC_001774_S15_L001_R2_001.fastq.gz  | SAMN18172464 |
| TAMUIC-IGC-001775 | <i>Kosciuscola</i> | <i>tristis</i> | BawBaw     | Australia: BawBaw, St Gwinear (-37.83347, 146.30814) | TAMUIC_IGC_001775_S14_L001_R1_001.fastq.gz  | TAMUIC_IGC_001775_S14_L001_R2_001.fastq.gz  | SAMN18172465 |
| TAMUIC-IGC-001776 | <i>Kosciuscola</i> | <i>tristis</i> | BawBaw     | Australia: BawBaw, St Gwinear (-37.83347, 146.30814) | TAMUIC_IGC_001776_S42_L001_R1_001.fastq.gz  | TAMUIC_IGC_001776_S42_L001_R2_001.fastq.gz  | SAMN18172466 |
| TAMUIC-IGC-001778 | <i>Kosciuscola</i> | <i>tristis</i> | BawBaw     | Australia: BawBaw, St Gwinear (-37.83347, 146.30814) | TAMUIC_IGC_001778_S25_L001_R1_001.fastq.gz  | TAMUIC_IGC_001778_S25_L001_R2_001.fastq.gz  | SAMN18172467 |
| TAMUIC-IGC-001779 | <i>Kosciuscola</i> | <i>tristis</i> | Buller     | Australia: Buller, Black Diamond (-37.1493, 146.439) | TAMUIC_IGC_001779_S137_L004_R1_001.fastq.gz | TAMUIC_IGC_001779_S137_L004_R2_001.fastq.gz | SAMN18172468 |
| TAMUIC-IGC-001780 | <i>Kosciuscola</i> | <i>tristis</i> | Buller     | Australia: Buller, Black Diamond (-37.1493, 146.439) | TAMUIC_IGC_001780_S136_L004_R1_001.fastq.gz | TAMUIC_IGC_001780_S136_L004_R2_001.fastq.gz | SAMN18172469 |

|                   |             |          |          |  |   |   |                  |
|-------------------|-------------|----------|----------|--|---|---|------------------|
| TAMUIC-IGC-001782 | Kosciuscola | tristis  | Buller   | Australia: Buller, Black Diamond (-37.1493, 146.439)   | TAMUIC_IGC_001782_S183_L005_R1_001.fastq.gz | TAMUIC_IGC_001782_S183_L005_R2_001.fastq.gz | SAMN181724<br>70 |
| TAMUIC-IGC-001783 | Kosciuscola | tristis  | Buller   | Australia: Buller, Black Diamond (-37.1493, 146.439)   | TAMUIC_IGC_001783_S7_L001_R1_001.fastq.gz   | TAMUIC_IGC_001783_S7_L001_R2_001.fastq.gz   | SAMN181724<br>71 |
| TAMUIC-IGC-001784 | Kosciuscola | tristis  | Stirling | Australia: Stirling, Post 37 (-37.12401, 146.49937)    | TAMUIC_IGC_001784_S3_L001_R1_001.fastq.gz   | TAMUIC_IGC_001784_S3_L001_R2_001.fastq.gz   | SAMN181724<br>72 |
| TAMUIC-IGC-001785 | Kosciuscola | tristis  | Stirling | Australia: Stirling, Post 37 (-37.12401, 146.49937)    | TAMUIC_IGC_001785_S28_L001_R1_001.fastq.gz  | TAMUIC_IGC_001785_S28_L001_R2_001.fastq.gz  | SAMN181724<br>73 |
| TAMUIC-IGC-001787 | Kosciuscola | tristis  | Stirling | Australia: Stirling, Post 37 (-37.12401, 146.49937)    | TAMUIC_IGC_001787_S23_L001_R1_001.fastq.gz  | TAMUIC_IGC_001787_S23_L001_R2_001.fastq.gz  | SAMN181724<br>74 |
| TAMUIC-IGC-001788 | Kosciuscola | tristis  | Stirling | Australia: Stirling, Post 37 (-37.12401, 146.49937)    | TAMUIC_IGC_001788_S43_L001_R1_001.fastq.gz  | TAMUIC_IGC_001788_S43_L001_R2_001.fastq.gz  | SAMN181724<br>75 |
| TAMUIC-IGC-001789 | Kosciuscola | tristis  | Hotham   | Australia: Hotham, Ormond Lodge (-36.98902, 147.14702) | TAMUIC_IGC_001789_S20_L001_R1_001.fastq.gz  | TAMUIC_IGC_001789_S20_L001_R2_001.fastq.gz  | SAMN181724<br>76 |
| TAMUIC-IGC-001790 | Kosciuscola | tristis  | Hotham   | Australia: Hotham, Ormond Lodge (-36.98902, 147.14702) | TAMUIC_IGC_001790_S37_L001_R1_001.fastq.gz  | TAMUIC_IGC_001790_S37_L001_R2_001.fastq.gz  | SAMN181724<br>77 |
| TAMUIC-IGC-001791 | Kosciuscola | tristis  | Hotham   | Australia: Hotham, Ormond Lodge (-36.98902, 147.14702) | TAMUIC_IGC_001791_S187_L005_R1_001.fastq.gz | TAMUIC_IGC_001791_S187_L005_R2_001.fastq.gz | SAMN181724<br>78 |
| TAMUIC-IGC-001792 | Kosciuscola | tristis  | Hotham   | Australia: Hotham, Ormond Lodge (-36.98902, 147.14702) | TAMUIC_IGC_001792_S227_L006_R1_001.fastq.gz | TAMUIC_IGC_001792_S227_L006_R2_001.fastq.gz | SAMN181724<br>79 |
| TAMUIC-IGC-001793 | Kosciuscola | tristis  | Hotham   | Australia: Hotham, Ormond Lodge (-36.98902, 147.14702) | TAMUIC_IGC_001793_S223_L006_R1_001.fastq.gz | TAMUIC_IGC_001793_S223_L006_R2_001.fastq.gz | SAMN181724<br>80 |
| TAMUIC-IGC-001794 | Kosciuscola | usitatus | Hotham   | Australia: Hotham, Mt Hotham (-36.98888, 147.14639)    | TAMUIC_IGC_001794_S224_L006_R1_001.fastq.gz | TAMUIC_IGC_001794_S224_L006_R2_001.fastq.gz | SAMN181724<br>81 |
| TAMUIC-IGC-001795 | Kosciuscola | usitatus | Hotham   | Australia: Hotham, Mt Hotham (-36.98888, 147.14639)    | TAMUIC_IGC_001795_S179_L005_R1_001.fastq.gz | TAMUIC_IGC_001795_S179_L005_R2_001.fastq.gz | SAMN181724<br>82 |
| TAMUIC-IGC-001796 | Kosciuscola | usitatus | Hotham   | Australia: Hotham, Mt Hotham (-36.98888, 147.14639)    | TAMUIC_IGC_001796_S34_L001_R1_001.fastq.gz  | TAMUIC_IGC_001796_S34_L001_R2_001.fastq.gz  | SAMN181724<br>83 |
| TAMUIC-IGC-001797 | Kosciuscola | usitatus | Hotham   | Australia: Hotham, Mt Hotham (-36.98888, 147.14639)    | TAMUIC_IGC_001797_S17_L001_R1_001.fastq.gz  | TAMUIC_IGC_001797_S17_L001_R2_001.fastq.gz  | SAMN181724<br>84 |
| TAMUIC-IGC-001799 | Kosciuscola | cognatus | WBHP     | Australia: WBHP, Dibbins Hut (-36.94837, 147.18297)    | TAMUIC_IGC_001799_S190_L005_R1_001.fastq.gz | TAMUIC_IGC_001799_S190_L005_R2_001.fastq.gz | SAMN181724<br>85 |
| TAMUIC-IGC-001800 | Kosciuscola | cognatus | WBHP     | Australia: WBHP, Dibbins Hut (-36.94837, 147.18297)    | TAMUIC_IGC_001800_S27_L001_R1_001.fastq.gz  | TAMUIC_IGC_001800_S27_L001_R2_001.fastq.gz  | SAMN181724<br>86 |
| TAMUIC-IGC-001801 | Kosciuscola | cognatus | WBHP     | Australia: WBHP, Dibbins Hut (-36.94837, 147.18297)    | TAMUIC_IGC_001801_S36_L001_R1_001.fastq.gz  | TAMUIC_IGC_001801_S36_L001_R2_001.fastq.gz  | SAMN181724<br>87 |
| TAMUIC-IGC-001802 | Kosciuscola | cognatus | WBHP     | Australia: WBHP, Dibbins Hut (-36.94837, 147.18297)    | TAMUIC_IGC_001802_S200_L005_R1_001.fastq.gz | TAMUIC_IGC_001802_S200_L005_R2_001.fastq.gz | SAMN181724<br>88 |
| TAMUIC-IGC-001803 | Kosciuscola | cognatus | WBHP     | Australia: WBHP, Dibbins Hut (-36.94837, 147.18297)    | TAMUIC_IGC_001803_S44_L001_R1_001.fastq.gz  | TAMUIC_IGC_001803_S44_L001_R2_001.fastq.gz  | SAMN181724<br>89 |

|                   |             |          |            |  |   |   |              |
|-------------------|-------------|----------|------------|--|---|---|--------------|
| TAMUIC-IGC-001804 | Kosciuscola | tristis  | WBHP       | Australia: WBHP, Cope summit saddle (-36.92661, 147.27841)     | TAMUIC_IGC_001804_S30_L001_R1_001.fastq.gz  | TAMUIC_IGC_001804_S30_L001_R2_001.fastq.gz  | SAMN18172490 |
| TAMUIC-IGC-001805 | Kosciuscola | tristis  | WBHP       | Australia: WBHP, Cope summit saddle (-36.92661, 147.27841)     | TAMUIC_IGC_001805_S133_L004_R1_001.fastq.gz | TAMUIC_IGC_001805_S133_L004_R2_001.fastq.gz | SAMN18172491 |
| TAMUIC-IGC-001806 | Kosciuscola | tristis  | WBHP       | Australia: WBHP, Cope summit saddle (-36.92661, 147.27841)     | TAMUIC_IGC_001806_S189_L005_R1_001.fastq.gz | TAMUIC_IGC_001806_S189_L005_R2_001.fastq.gz | SAMN18172492 |
| TAMUIC-IGC-001807 | Kosciuscola | tristis  | WBHP       | Australia: WBHP, Cope summit saddle (-36.92661, 147.27841)     | TAMUIC_IGC_001807_S22_L001_R1_001.fastq.gz  | TAMUIC_IGC_001807_S22_L001_R2_001.fastq.gz  | SAMN18172493 |
| TAMUIC-IGC-001808 | Kosciuscola | tristis  | WBHP       | Australia: WBHP, Cope summit saddle (-36.92661, 147.27841)     | TAMUIC_IGC_001808_S39_L001_R1_001.fastq.gz  | TAMUIC_IGC_001808_S39_L001_R2_001.fastq.gz  | SAMN18172494 |
| TAMUIC-IGC-001809 | Kosciuscola | usitatus | WBHP       | Australia: WBHP, Cope summit saddle (-36.92661, 147.27841)     | TAMUIC_IGC_001809_S182_L005_R1_001.fastq.gz | TAMUIC_IGC_001809_S182_L005_R2_001.fastq.gz | SAMN18172495 |
| TAMUIC-IGC-001810 | Kosciuscola | usitatus | WBHP       | Australia: WBHP, Cope summit saddle (-36.92661, 147.27841)     | TAMUIC_IGC_001810_S188_L005_R1_001.fastq.gz | TAMUIC_IGC_001810_S188_L005_R2_001.fastq.gz | SAMN18172496 |
| TAMUIC-IGC-001813 | Kosciuscola | usitatus | WBHP       | Australia: WBHP, Cope summit saddle (-36.92661, 147.27841)     | TAMUIC_IGC_001813_S19_L001_R1_001.fastq.gz  | TAMUIC_IGC_001813_S19_L001_R2_001.fastq.gz  | SAMN18172497 |
| TAMUIC-IGC-001814 | Kosciuscola | cognatus | Cobberas   | Australia: Cobberas, Native dog flat (-36.89827, 148.09123)    | TAMUIC_IGC_001814_S229_L006_R1_001.fastq.gz | TAMUIC_IGC_001814_S229_L006_R2_001.fastq.gz | SAMN18172498 |
| TAMUIC-IGC-001816 | Kosciuscola | cognatus | Cobberas   | Australia: Cobberas, Native dog flat (-36.89827, 148.09123)    | TAMUIC_IGC_001816_S195_L005_R1_001.fastq.gz | TAMUIC_IGC_001816_S195_L005_R2_001.fastq.gz | SAMN18172499 |
| TAMUIC-IGC-001817 | Kosciuscola | cognatus | Cobberas   | Australia: Cobberas, Native dog flat (-36.89827, 148.09123)    | TAMUIC_IGC_001817_S33_L001_R1_001.fastq.gz  | TAMUIC_IGC_001817_S33_L001_R2_001.fastq.gz  | SAMN18172500 |
| TAMUIC-IGC-001818 | Kosciuscola | cognatus | Cobberas   | Australia: Cobberas, Native dog flat (-36.89827, 148.09123)    | TAMUIC_IGC_001818_S139_L004_R1_001.fastq.gz | TAMUIC_IGC_001818_S139_L004_R2_001.fastq.gz | SAMN18172501 |
| TAMUIC-IGC-001819 | Kosciuscola | tristis  | Feathertop | Australia: Feathertop, Federation hut (-36.89696, 147.11234)   | TAMUIC_IGC_001819_S8_L001_R1_001.fastq.gz   | TAMUIC_IGC_001819_S8_L001_R2_001.fastq.gz   | SAMN18172502 |
| TAMUIC-IGC-001820 | Kosciuscola | tristis  | Feathertop | Australia: Feathertop, Federation hut (-36.89696, 147.11234)   | TAMUIC_IGC_001820_S185_L005_R1_001.fastq.gz | TAMUIC_IGC_001820_S185_L005_R2_001.fastq.gz | SAMN18172503 |
| TAMUIC-IGC-001821 | Kosciuscola | tristis  | Feathertop | Australia: Feathertop, Federation hut (-36.89696, 147.11234)   | TAMUIC_IGC_001821_S197_L005_R1_001.fastq.gz | TAMUIC_IGC_001821_S197_L005_R2_001.fastq.gz | SAMN18172504 |
| TAMUIC-IGC-001822 | Kosciuscola | tristis  | Feathertop | Australia: Feathertop, Federation hut (-36.89696, 147.11234)   | TAMUIC_IGC_001822_S6_L001_R1_001.fastq.gz   | TAMUIC_IGC_001822_S6_L001_R2_001.fastq.gz   | SAMN18172505 |
| TAMUIC-IGC-001824 | Kosciuscola | cuneatus | WBHP       | Australia: WBHP, Mt Jaithmathang summit (-36.89026, 147.19231) | TAMUIC_IGC_001824_S16_L001_R1_001.fastq.gz  | TAMUIC_IGC_001824_S16_L001_R2_001.fastq.gz  | SAMN18172506 |
| TAMUIC-IGC-001825 | Kosciuscola | cuneatus | WBHP       | Australia: WBHP, Mt Jaithmathang summit (-36.89026, 147.19231) | TAMUIC_IGC_001825_S40_L001_R1_001.fastq.gz  | TAMUIC_IGC_001825_S40_L001_R2_001.fastq.gz  | SAMN18172507 |
| TAMUIC-IGC-001826 | Kosciuscola | cuneatus | WBHP       | Australia: WBHP, Mt Jaithmathang summit (-36.89026, 147.19231) | TAMUIC_IGC_001826_S144_L004_R1_001.fastq.gz | TAMUIC_IGC_001826_S144_L004_R2_001.fastq.gz | SAMN18172508 |
| TAMUIC-IGC-001828 | Kosciuscola | cuneatus | WBHP       | Australia: WBHP, Mt Jaithmathang summit (-36.89026, 147.19231) | TAMUIC_IGC_001828_S32_L001_R1_001.fastq.gz  | TAMUIC_IGC_001828_S32_L001_R2_001.fastq.gz  | SAMN18172509 |

|                   |             |          |          |   |   |   |            |    |
|-------------------|-------------|----------|----------|---|---|---|------------|----|
| TAMUIC-IGC-001829 | Kosciuscola | usitatus | Cobberas | Australia: Cobberas, Brumby tracks (-36.8757, 148.11533)  | TAMUIC_IGC_001829_S142_L004_R1_001.fastq.gz | TAMUIC_IGC_001829_S142_L004_R2_001.fastq.gz | SAMN181725 | 10 |
| TAMUIC-IGC-001830 | Kosciuscola | usitatus | Cobberas | Australia: Cobberas, Brumby tracks (-36.8757, 148.11533)  | TAMUIC_IGC_001830_S9_L001_R1_001.fastq.gz   | TAMUIC_IGC_001830_S9_L001_R2_001.fastq.gz   | SAMN181725 | 11 |
| TAMUIC-IGC-001832 | Kosciuscola | usitatus | Cobberas | Australia: Cobberas, Brumby tracks (-36.8757, 148.11533)  | TAMUIC_IGC_001832_S186_L005_R1_001.fastq.gz | TAMUIC_IGC_001832_S186_L005_R2_001.fastq.gz | SAMN181725 | 12 |
| TAMUIC-IGC-001833 | Kosciuscola | usitatus | Cobberas | Australia: Cobberas, Brumby tracks (-36.8757, 148.11533)  | TAMUIC_IGC_001833_S26_L001_R1_001.fastq.gz  | TAMUIC_IGC_001833_S26_L001_R2_001.fastq.gz  | SAMN181725 | 13 |
| TAMUIC-IGC-001835 | Kosciuscola | tristis  | EBHP     | Australia: EBHP, Cleve Cole hut (-36.75586, 147.32664)    | TAMUIC_IGC_001835_S178_L005_R1_001.fastq.gz | TAMUIC_IGC_001835_S178_L005_R2_001.fastq.gz | SAMN181725 | 14 |
| TAMUIC-IGC-001836 | Kosciuscola | tristis  | EBHP     | Australia: EBHP, Cleve Cole hut (-36.75586, 147.32664)    | TAMUIC_IGC_001836_S184_L005_R1_001.fastq.gz | TAMUIC_IGC_001836_S184_L005_R2_001.fastq.gz | SAMN181725 | 15 |
| TAMUIC-IGC-001837 | Kosciuscola | tristis  | EBHP     | Australia: EBHP, Cleve Cole hut (-36.75586, 147.32664)    | TAMUIC_IGC_001837_S31_L001_R1_001.fastq.gz  | TAMUIC_IGC_001837_S31_L001_R2_001.fastq.gz  | SAMN181725 | 16 |
| TAMUIC-IGC-001838 | Kosciuscola | tristis  | EBHP     | Australia: EBHP, Cleve Cole hut (-36.75586, 147.32664)    | TAMUIC_IGC_001838_S134_L004_R1_001.fastq.gz | TAMUIC_IGC_001838_S134_L004_R2_001.fastq.gz | SAMN181725 | 17 |
| TAMUIC-IGC-001839 | Kosciuscola | tristis  | EBHP     | Australia: EBHP, Cleve Cole hut (-36.75586, 147.32664)    | TAMUIC_IGC_001839_S181_L005_R1_001.fastq.gz | TAMUIC_IGC_001839_S181_L005_R2_001.fastq.gz | SAMN181725 | 18 |
| TAMUIC-IGC-001840 | Kosciuscola | usitatus | EBHP     | Australia: EBHP, Cleve Cole hut (-36.75586, 147.32664)    | TAMUIC_IGC_001840_S5_L001_R1_001.fastq.gz   | TAMUIC_IGC_001840_S5_L001_R2_001.fastq.gz   | SAMN181725 | 19 |
| TAMUIC-IGC-001841 | Kosciuscola | usitatus | EBHP     | Australia: EBHP, Cleve Cole hut (-36.75586, 147.32664)    | TAMUIC_IGC_001841_S135_L004_R1_001.fastq.gz | TAMUIC_IGC_001841_S135_L004_R2_001.fastq.gz | SAMN181725 | 20 |
| TAMUIC-IGC-001842 | Kosciuscola | usitatus | EBHP     | Australia: EBHP, Cleve Cole hut (-36.75586, 147.32664)    | TAMUIC_IGC_001842_S230_L006_R1_001.fastq.gz | TAMUIC_IGC_001842_S230_L006_R2_001.fastq.gz | SAMN181725 | 21 |
| TAMUIC-IGC-001843 | Kosciuscola | usitatus | EBHP     | Australia: EBHP, Cleve Cole hut (-36.75586, 147.32664)    | TAMUIC_IGC_001843_S143_L004_R1_001.fastq.gz | TAMUIC_IGC_001843_S143_L004_R2_001.fastq.gz | SAMN181725 | 22 |
| TAMUIC-IGC-001844 | Kosciuscola | usitatus | EBHP     | Australia: EBHP, Cleve Cole hut (-36.75586, 147.32664)    | TAMUIC_IGC_001844_S13_L001_R1_001.fastq.gz  | TAMUIC_IGC_001844_S13_L001_R2_001.fastq.gz  | SAMN181725 | 23 |
| TAMUIC-IGC-001845 | Kosciuscola | tristis  | Buffalo  | Australia: Buffalo, Corral carpark (-36.75529, 146.79135) | TAMUIC_IGC_001845_S194_L005_R1_001.fastq.gz | TAMUIC_IGC_001845_S194_L005_R2_001.fastq.gz | SAMN181725 | 24 |
| TAMUIC-IGC-001846 | Kosciuscola | tristis  | Buffalo  | Australia: Buffalo, Corral carpark (-36.75529, 146.79135) | TAMUIC_IGC_001846_S236_L006_R1_001.fastq.gz | TAMUIC_IGC_001846_S236_L006_R2_001.fastq.gz | SAMN181725 | 25 |
| TAMUIC-IGC-001847 | Kosciuscola | tristis  | Buffalo  | Australia: Buffalo, Corral carpark (-36.75529, 146.79135) | TAMUIC_IGC_001847_S225_L006_R1_001.fastq.gz | TAMUIC_IGC_001847_S225_L006_R2_001.fastq.gz | SAMN181725 | 26 |
| TAMUIC-IGC-001848 | Kosciuscola | tristis  | Buffalo  | Australia: Buffalo, Corral carpark (-36.75529, 146.79135) | TAMUIC_IGC_001848_S226_L006_R1_001.fastq.gz | TAMUIC_IGC_001848_S226_L006_R2_001.fastq.gz | SAMN181725 | 27 |
| TAMUIC-IGC-001849 | Kosciuscola | tristis  | Buffalo  | Australia: Buffalo, Corral carpark (-36.75529, 146.79135) | TAMUIC_IGC_001849_S233_L006_R1_001.fastq.gz | TAMUIC_IGC_001849_S233_L006_R2_001.fastq.gz | SAMN181725 | 28 |
| TAMUIC-IGC-001850 | Kosciuscola | cuneatus | EBHP     | Australia: EBHP, Eskdale spur 4 (-36.72366, 147.31488)    | TAMUIC_IGC_001850_S228_L006_R1_001.fastq.gz | TAMUIC_IGC_001850_S228_L006_R2_001.fastq.gz | SAMN181725 | 29 |

|                   |             |          |         |   |   |   |                  |
|-------------------|-------------|----------|---------|---|---|---|------------------|
| TAMUIC-IGC-001854 | Kosciuscola | cuneatus | Buffalo | Australia: Buffalo, Mt McLeod summit (-36.69513, 146.78908) | TAMUIC_IGC_001854_S201_L005_R1_001.fastq.gz | TAMUIC_IGC_001854_S201_L005_R2_001.fastq.gz | SAMN181725<br>30 |
| TAMUIC-IGC-001855 | Kosciuscola | cuneatus | Buffalo | Australia: Buffalo, Mt McLeod summit (-36.69513, 146.78908) | TAMUIC_IGC_001855_S196_L005_R1_001.fastq.gz | TAMUIC_IGC_001855_S196_L005_R2_001.fastq.gz | SAMN181725<br>31 |
| TAMUIC-IGC-001856 | Kosciuscola | cuneatus | Buffalo | Australia: Buffalo, Mt McLeod summit (-36.69513, 146.78908) | TAMUIC_IGC_001856_S141_L004_R1_001.fastq.gz | TAMUIC_IGC_001856_S141_L004_R2_001.fastq.gz | SAMN181725<br>32 |
| TAMUIC-IGC-001857 | Kosciuscola | cuneatus | Buffalo | Australia: Buffalo, Mt McLeod summit (-36.69513, 146.78908) | TAMUIC_IGC_001857_S191_L005_R1_001.fastq.gz | TAMUIC_IGC_001857_S191_L005_R2_001.fastq.gz | SAMN181725<br>33 |
| TAMUIC-IGC-001859 | Kosciuscola | cognatus | Thredbo | Australia: Thredbo, DHG wombat hole (-36.51389, 148.2878)   | TAMUIC_IGC_001859_S199_L005_R1_001.fastq.gz | TAMUIC_IGC_001859_S199_L005_R2_001.fastq.gz | SAMN181725<br>34 |
| TAMUIC-IGC-001860 | Kosciuscola | cognatus | Thredbo | Australia: Thredbo, DHG wombat hole (-36.51389, 148.2878)   | TAMUIC_IGC_001860_S180_L005_R1_001.fastq.gz | TAMUIC_IGC_001860_S180_L005_R2_001.fastq.gz | SAMN181725<br>35 |
| TAMUIC-IGC-001862 | Kosciuscola | cognatus | Thredbo | Australia: Thredbo, DHG wombat hole (-36.51389, 148.2878)   | TAMUIC_IGC_001862_S234_L006_R1_001.fastq.gz | TAMUIC_IGC_001862_S234_L006_R2_001.fastq.gz | SAMN181725<br>36 |
| TAMUIC-IGC-001863 | Kosciuscola | cuneatus | Thredbo | Australia: Thredbo, DHG wombat hole (-36.51389, 148.2878)   | TAMUIC_IGC_001863_S232_L006_R1_001.fastq.gz | TAMUIC_IGC_001863_S232_L006_R2_001.fastq.gz | SAMN181725<br>37 |
| TAMUIC-IGC-001864 | Kosciuscola | cuneatus | Thredbo | Australia: Thredbo, DHG wombat hole (-36.51389, 148.2878)   | TAMUIC_IGC_001864_S235_L006_R1_001.fastq.gz | TAMUIC_IGC_001864_S235_L006_R2_001.fastq.gz | SAMN181725<br>38 |
| TAMUIC-IGC-001865 | Kosciuscola | cuneatus | Thredbo | Australia: Thredbo, DHG wombat hole (-36.51389, 148.2878)   | TAMUIC_IGC_001865_S192_L005_R1_001.fastq.gz | TAMUIC_IGC_001865_S192_L005_R2_001.fastq.gz | SAMN181725<br>39 |
| TAMUIC-IGC-001866 | Kosciuscola | cuneatus | Thredbo | Australia: Thredbo, DHG wombat hole (-36.51389, 148.2878)   | TAMUIC_IGC_001866_S198_L005_R1_001.fastq.gz | TAMUIC_IGC_001866_S198_L005_R2_001.fastq.gz | SAMN181725<br>40 |
| TAMUIC-IGC-001867 | Kosciuscola | cuneatus | Thredbo | Australia: Thredbo, DHG wombat hole (-36.51389, 148.2878)   | TAMUIC_IGC_001867_S237_L006_R1_001.fastq.gz | TAMUIC_IGC_001867_S237_L006_R2_001.fastq.gz | SAMN181725<br>41 |
| TAMUIC-IGC-001868 | Kosciuscola | tristis  | Thredbo | Australia: Thredbo, Mt Flat (-36.49532, 148.29497)          | TAMUIC_IGC_001868_S29_L001_R1_001.fastq.gz  | TAMUIC_IGC_001868_S29_L001_R2_001.fastq.gz  | SAMN181725<br>42 |
| TAMUIC-IGC-001869 | Kosciuscola | tristis  | Thredbo | Australia: Thredbo, Mt Flat (-36.49532, 148.29497)          | TAMUIC_IGC_001869_S24_L001_R1_001.fastq.gz  | TAMUIC_IGC_001869_S24_L001_R2_001.fastq.gz  | SAMN181725<br>43 |
| TAMUIC-IGC-001870 | Kosciuscola | tristis  | Thredbo | Australia: Thredbo, Mt Flat (-36.49532, 148.29497)          | TAMUIC_IGC_001870_S4_L001_R1_001.fastq.gz   | TAMUIC_IGC_001870_S4_L001_R2_001.fastq.gz   | SAMN181725<br>44 |
| TAMUIC-IGC-001871 | Kosciuscola | tristis  | Thredbo | Australia: Thredbo, Mt Flat (-36.49532, 148.29497)          | TAMUIC_IGC_001871_S2_L001_R1_001.fastq.gz   | TAMUIC_IGC_001871_S2_L001_R2_001.fastq.gz   | SAMN181725<br>45 |
| TAMUIC-IGC-001872 | Kosciuscola | tristis  | Thredbo | Australia: Thredbo, Mt Flat (-36.49532, 148.29497)          | TAMUIC_IGC_001872_S21_L001_R1_001.fastq.gz  | TAMUIC_IGC_001872_S21_L001_R2_001.fastq.gz  | SAMN181725<br>46 |
| TAMUIC-IGC-001873 | Kosciuscola | usitatus | Thredbo | Australia: Thredbo, Mt Flat (-36.49532, 148.29497)          | TAMUIC_IGC_001873_S1_L001_R1_001.fastq.gz   | TAMUIC_IGC_001873_S1_L001_R2_001.fastq.gz   | SAMN181725<br>47 |
| TAMUIC-IGC-001876 | Kosciuscola | usitatus | Thredbo | Australia: Thredbo, Mt Flat (-36.49532, 148.29497)          | TAMUIC_IGC_001876_S193_L005_R1_001.fastq.gz | TAMUIC_IGC_001876_S193_L005_R2_001.fastq.gz | SAMN181725<br>48 |
| TAMUIC-IGC-001877 | Kosciuscola | usitatus | Thredbo | Australia: Thredbo, Mt Flat (-36.49532, 148.29497)          | TAMUIC_IGC_001877_S11_L001_R1_001.fastq.gz  | TAMUIC_IGC_001877_S11_L001_R2_001.fastq.gz  | SAMN181725<br>49 |

|                   |             |          |          |   |   |   |                  |
|-------------------|-------------|----------|----------|---|---|---|------------------|
| TAMUIC-IGC-001879 | Kosciuscola | tristis  | Townsend | Australia: Townsend, Townsend summit (-36.42245, 148.25883) | TAMUIC_IGC_001879_S138_L004_R1_001.fastq.gz | TAMUIC_IGC_001879_S138_L004_R2_001.fastq.gz | SAMN181725<br>50 |
| TAMUIC-IGC-001880 | Kosciuscola | tristis  | Townsend | Australia: Townsend, Townsend summit (-36.42245, 148.25883) | TAMUIC_IGC_001880_S18_L001_R1_001.fastq.gz  | TAMUIC_IGC_001880_S18_L001_R2_001.fastq.gz  | SAMN181725<br>51 |
| TAMUIC-IGC-001882 | Kosciuscola | tristis  | Townsend | Australia: Townsend, Townsend summit (-36.42245, 148.25883) | TAMUIC_IGC_001882_S35_L001_R1_001.fastq.gz  | TAMUIC_IGC_001882_S35_L001_R2_001.fastq.gz  | SAMN181725<br>52 |
| TAMUIC-IGC-001883 | Kosciuscola | usitatus | Townsend | Australia: Townsend, Townsend summit (-36.42245, 148.25883) | TAMUIC_IGC_001883_S41_L001_R1_001.fastq.gz  | TAMUIC_IGC_001883_S41_L001_R2_001.fastq.gz  | SAMN181725<br>53 |
| TAMUIC-IGC-001884 | Kosciuscola | usitatus | Townsend | Australia: Townsend, Townsend summit (-36.42245, 148.25883) | TAMUIC_IGC_001884_S38_L001_R1_001.fastq.gz  | TAMUIC_IGC_001884_S38_L001_R2_001.fastq.gz  | SAMN181725<br>54 |
| TAMUIC-IGC-001888 | Kosciuscola | cognatus | Tate     | Australia: Tate, Tate lift (-36.37334, 148.3678)            | TAMUIC_IGC_001888_S10_L001_R1_001.fastq.gz  | TAMUIC_IGC_001888_S10_L001_R2_001.fastq.gz  | SAMN181725<br>55 |
| TAMUIC-IGC-001889 | Kosciuscola | cognatus | Tate     | Australia: Tate, Tate lift (-36.37334, 148.3678)            | TAMUIC_IGC_001889_S12_L001_R1_001.fastq.gz  | TAMUIC_IGC_001889_S12_L001_R2_001.fastq.gz  | SAMN181725<br>56 |
| TAMUIC-IGC-001890 | Kosciuscola | cognatus | Tate     | Australia: Tate, Tate lift (-36.37334, 148.3678)            | TAMUIC_IGC_001890_S251_L006_R1_001.fastq.gz | TAMUIC_IGC_001890_S251_L006_R2_001.fastq.gz | SAMN181725<br>57 |
| TAMUIC-IGC-001892 | Kosciuscola | cognatus | Tate     | Australia: Tate, Tate lift (-36.37334, 148.3678)            | TAMUIC_IGC_001892_S253_L006_R1_001.fastq.gz | TAMUIC_IGC_001892_S253_L006_R2_001.fastq.gz | SAMN181725<br>58 |
| TAMUIC-IGC-001893 | Kosciuscola | tristis  | Tate     | Australia: Tate, Mid Tate lift (-36.37263, 148.3652)        | TAMUIC_IGC_001893_S250_L006_R1_001.fastq.gz | TAMUIC_IGC_001893_S250_L006_R2_001.fastq.gz | SAMN181725<br>59 |
| TAMUIC-IGC-001894 | Kosciuscola | tristis  | Tate     | Australia: Tate, Mid Tate lift (-36.37263, 148.3652)        | TAMUIC_IGC_001894_S256_L006_R1_001.fastq.gz | TAMUIC_IGC_001894_S256_L006_R2_001.fastq.gz | SAMN181725<br>60 |
| TAMUIC-IGC-001895 | Kosciuscola | tristis  | Tate     | Australia: Tate, Mid Tate lift (-36.37263, 148.3652)        | TAMUIC_IGC_001895_S257_L006_R1_001.fastq.gz | TAMUIC_IGC_001895_S257_L006_R2_001.fastq.gz | SAMN181725<br>61 |
| TAMUIC-IGC-001896 | Kosciuscola | tristis  | Tate     | Australia: Tate, Mid Tate lift (-36.37263, 148.3652)        | TAMUIC_IGC_001896_S221_L005_R1_001.fastq.gz | TAMUIC_IGC_001896_S221_L005_R2_001.fastq.gz | SAMN181725<br>62 |
| TAMUIC-IGC-001897 | Kosciuscola | tristis  | Tate     | Australia: Tate, Mid Tate lift (-36.37263, 148.3652)        | TAMUIC_IGC_001897_S248_L006_R1_001.fastq.gz | TAMUIC_IGC_001897_S248_L006_R2_001.fastq.gz | SAMN181725<br>63 |
| TAMUIC-IGC-001898 | Kosciuscola | usitatus | Tate     | Australia: Tate, Tate knoll (-36.36229, 148.35495)          | TAMUIC_IGC_001898_S207_L005_R1_001.fastq.gz | TAMUIC_IGC_001898_S207_L005_R2_001.fastq.gz | SAMN181725<br>64 |
| TAMUIC-IGC-001899 | Kosciuscola | usitatus | Tate     | Australia: Tate, Tate knoll (-36.36229, 148.35495)          | TAMUIC_IGC_001899_S145_L004_R1_001.fastq.gz | TAMUIC_IGC_001899_S145_L004_R2_001.fastq.gz | SAMN181725<br>65 |
| TAMUIC-IGC-001900 | Kosciuscola | usitatus | Tate     | Australia: Tate, Tate knoll (-36.36229, 148.35495)          | TAMUIC_IGC_001900_S241_L006_R1_001.fastq.gz | TAMUIC_IGC_001900_S241_L006_R2_001.fastq.gz | SAMN181725<br>66 |
| TAMUIC-IGC-001901 | Kosciuscola | usitatus | Tate     | Australia: Tate, Tate knoll (-36.36229, 148.35495)          | TAMUIC_IGC_001901_S87_L002_R1_001.fastq.gz  | TAMUIC_IGC_001901_S87_L002_R2_001.fastq.gz  | SAMN181725<br>67 |
| TAMUIC-IGC-001903 | Kosciuscola | usitatus | Jagungal | Australia: Jagungal, Jagungal slope (-36.1493, 148.41019)   | TAMUIC_IGC_001903_S210_L005_R1_001.fastq.gz | TAMUIC_IGC_001903_S210_L005_R2_001.fastq.gz | SAMN181725<br>68 |
| TAMUIC-IGC-001904 | Kosciuscola | usitatus | Jagungal | Australia: Jagungal, Jagungal slope (-36.1493, 148.41019)   | TAMUIC_IGC_001904_S247_L006_R1_001.fastq.gz | TAMUIC_IGC_001904_S247_L006_R2_001.fastq.gz | SAMN181725<br>69 |

|                   |             |            |          |   |   |   |              |
|-------------------|-------------|------------|----------|---|---|---|--------------|
| TAMUIC-IGC-001905 | Kosciuscola | usitatus   | Jagungal | Australia: Jagungal, Jagungal slope (-36.1493, 148.41019)       | TAMUIC_IGC_001905_S57_L002_R1_001.fastq.gz  | TAMUIC_IGC_001905_S57_L002_R2_001.fastq.gz  | SAMN18172570 |
| TAMUIC-IGC-001906 | Kosciuscola | usitatus   | Jagungal | Australia: Jagungal, Jagungal slope (-36.1493, 148.41019)       | TAMUIC_IGC_001906_S69_L002_R1_001.fastq.gz  | TAMUIC_IGC_001906_S69_L002_R2_001.fastq.gz  | SAMN18172571 |
| TAMUIC-IGC-001907 | Kosciuscola | usitatus   | Jagungal | Australia: Jagungal, Jagungal slope (-36.1493, 148.41019)       | TAMUIC_IGC_001907_S242_L006_R1_001.fastq.gz | TAMUIC_IGC_001907_S242_L006_R2_001.fastq.gz | SAMN18172572 |
| TAMUIC-IGC-001908 | Kosciuscola | tristis    | Jagungal | Australia: Jagungal, Jagungal summit (-36.1481, 148.38754)      | TAMUIC_IGC_001908_S153_L004_R1_001.fastq.gz | TAMUIC_IGC_001908_S153_L004_R2_001.fastq.gz | SAMN18172573 |
| TAMUIC-IGC-001909 | Kosciuscola | tristis    | Jagungal | Australia: Jagungal, Jagungal summit (-36.1481, 148.38754)      | TAMUIC_IGC_001909_S86_L002_R1_001.fastq.gz  | TAMUIC_IGC_001909_S86_L002_R2_001.fastq.gz  | SAMN18172574 |
| TAMUIC-IGC-001910 | Kosciuscola | tristis    | Jagungal | Australia: Jagungal, Jagungal summit (-36.1481, 148.38754)      | TAMUIC_IGC_001910_S80_L002_R1_001.fastq.gz  | TAMUIC_IGC_001910_S80_L002_R2_001.fastq.gz  | SAMN18172575 |
| TAMUIC-IGC-001911 | Kosciuscola | tristis    | Jagungal | Australia: Jagungal, Jagungal summit (-36.1481, 148.38754)      | TAMUIC_IGC_001911_S84_L002_R1_001.fastq.gz  | TAMUIC_IGC_001911_S84_L002_R2_001.fastq.gz  | SAMN18172576 |
| TAMUIC-IGC-001912 | Kosciuscola | tristis    | Jagungal | Australia: Jagungal, Jagungal summit (-36.1481, 148.38754)      | TAMUIC_IGC_001912_S245_L006_R1_001.fastq.gz | TAMUIC_IGC_001912_S245_L006_R2_001.fastq.gz | SAMN18172577 |
| TAMUIC-IGC-001913 | Kosciuscola | cognatus   | Jagungal | Australia: Jagungal, Cesjack's Hut (-36.14526, 148.45255)       | TAMUIC_IGC_001913_S61_L002_R1_001.fastq.gz  | TAMUIC_IGC_001913_S61_L002_R2_001.fastq.gz  | SAMN18172578 |
| TAMUIC-IGC-001914 | Kosciuscola | cognatus   | Jagungal | Australia: Jagungal, Cesjack's Hut (-36.14526, 148.45255)       | TAMUIC_IGC_001914_S244_L006_R1_001.fastq.gz | TAMUIC_IGC_001914_S244_L006_R2_001.fastq.gz | SAMN18172579 |
| TAMUIC-IGC-001915 | Kosciuscola | cognatus   | Jagungal | Australia: Jagungal, Cesjack's Hut (-36.14526, 148.45255)       | TAMUIC_IGC_001915_S240_L006_R1_001.fastq.gz | TAMUIC_IGC_001915_S240_L006_R2_001.fastq.gz | SAMN18172580 |
| TAMUIC-IGC-001916 | Kosciuscola | cognatus   | Jagungal | Australia: Jagungal, Cesjack's Hut (-36.14526, 148.45255)       | TAMUIC_IGC_001916_S60_L002_R1_001.fastq.gz  | TAMUIC_IGC_001916_S60_L002_R2_001.fastq.gz  | SAMN18172581 |
| TAMUIC-IGC-001924 | Kosciuscola | cuneatus   | Gingera  | Australia: Gingera, Mt Gingera (-35.57593, 148.77913)           | TAMUIC_IGC_001924_S54_L002_R1_001.fastq.gz  | TAMUIC_IGC_001924_S54_L002_R2_001.fastq.gz  | SAMN18172582 |
| TAMUIC-IGC-001926 | Kosciuscola | cuneatus   | Gingera  | Australia: Gingera, Mt Gingera (-35.57593, 148.77913)           | TAMUIC_IGC_001926_S50_L002_R1_001.fastq.gz  | TAMUIC_IGC_001926_S50_L002_R2_001.fastq.gz  | SAMN18172583 |
| TAMUIC-IGC-001927 | Kosciuscola | cognatus   | Gingera  | Australia: Gingera, Mt Gingera (-35.57593, 148.77913)           | TAMUIC_IGC_001927_S46_L002_R1_001.fastq.gz  | TAMUIC_IGC_001927_S46_L002_R2_001.fastq.gz  | SAMN18172584 |
| TAMUIC-IGC-001930 | Kosciuscola | cognatus   | Gingera  | Australia: Gingera, Mt Gingera (-35.57593, 148.77913)           | TAMUIC_IGC_001930_S203_L005_R1_001.fastq.gz | TAMUIC_IGC_001930_S203_L005_R2_001.fastq.gz | SAMN18172585 |
| TAMUIC-IGC-001931 | Kosciuscola | usitatus   | Gingera  | Australia: Gingera, Mt Gingera (-35.57593, 148.77913)           | TAMUIC_IGC_001931_S56_L002_R1_001.fastq.gz  | TAMUIC_IGC_001931_S56_L002_R2_001.fastq.gz  | SAMN18172586 |
| TAMUIC-IGC-001932 | Kosciuscola | usitatus   | Gingera  | Australia: Gingera, Mt Gingera (-35.57593, 148.77913)           | TAMUIC_IGC_001932_S220_L005_R1_001.fastq.gz | TAMUIC_IGC_001932_S220_L005_R2_001.fastq.gz | SAMN18172587 |
| TAMUIC-IGC-001937 | Kosciuscola | tasmanicus | Bronte   | Australia: Tasmania, Bronte Park, Dee Rd (-42.24059, 146.54063) | TAMUIC_IGC_001937_S255_L006_R1_001.fastq.gz | TAMUIC_IGC_001937_S255_L006_R2_001.fastq.gz | SAMN18172588 |
| TAMUIC-IGC-001938 | Kosciuscola | tasmanicus | Bronte   | Australia: Tasmania, Bronte Park, Dee Rd (-42.24059, 146.54063) | TAMUIC_IGC_001938_S48_L002_R1_001.fastq.gz  | TAMUIC_IGC_001938_S48_L002_R2_001.fastq.gz  | SAMN18172589 |

|                   |             |             |         |   |   |   |            |    |
|-------------------|-------------|-------------|---------|---|---|---|------------|----|
| TAMUIC-IGC-001941 | Kosciuscola | tasmanic us | Bronte  | Australia: Tasmania, Bronte Park, Dee Rd (-42.24059, 146.54063)           | TAMUIC_IGC_001941_S152_L004_R1_001.fastq.gz | TAMUIC_IGC_001941_S152_L004_R2_001.fastq.gz | SAMN181725 | 90 |
| TAMUIC-IGC-001942 | Kosciuscola | tasmanic us | Bronte  | Australia: Tasmania, Bronte Park, Dee Rd (-42.24059, 146.54063)           | TAMUIC_IGC_001942_S150_L004_R1_001.fastq.g  | TAMUIC_IGC_001942_S150_L004_R2_001.fastq.gz | SAMN181725 | 91 |
| TAMUIC-IGC-001943 | Kosciuscola | tasmanic us | Bronte  | Australia: Tasmania, Bronte Park, Dee Rd (-42.24059, 146.54063)           | TAMUIC_IGC_001943_S71_L002_R1_001.fastq.gz  | TAMUIC_IGC_001943_S71_L002_R2_001.fastq.gz  | SAMN181725 | 92 |
| TAMUIC-IGC-001944 | Kosciuscola | tasmanic us | Bronte  | Australia: Tasmania, Bronte Park, Dee Rd (-42.24059, 146.54063)           | TAMUIC_IGC_001944_S59_L002_R1_001.fastq.gz  | TAMUIC_IGC_001944_S59_L002_R2_001.fastq.gz  | SAMN181725 | 93 |
| TAMUIC-IGC-001945 | Kosciuscola | tasmanic us | Bronte  | Australia: Tasmania, Bronte Park, Dee Rd (-42.24059, 146.54063)           | TAMUIC_IGC_001945_S72_L002_R1_001.fastq.gz  | TAMUIC_IGC_001945_S72_L002_R2_001.fastq.gz  | SAMN181725 | 94 |
| TAMUIC-IGC-001947 | Kosciuscola | tasmanic us | StClair | Australia: Tasmania, Lake St Clair, Derwent Bridge (-42.13268, 146.23166) | TAMUIC_IGC_001947_S148_L004_R1_001.fastq.gz | TAMUIC_IGC_001947_S148_L004_R2_001.fastq.gz | SAMN181725 | 95 |
| TAMUIC-IGC-001948 | Kosciuscola | tasmanic us | StClair | Australia: Tasmania, Lake St Clair, Derwent Bridge (-42.13268, 146.23166) | TAMUIC_IGC_001948_S202_L005_R1_001.fastq.gz | TAMUIC_IGC_001948_S202_L005_R2_001.fastq.gz | SAMN181725 | 96 |
| TAMUIC-IGC-001949 | Kosciuscola | tasmanic us | StClair | Australia: Tasmania, Lake St Clair, Derwent Bridge (-42.13268, 146.23166) | TAMUIC_IGC_001949_S79_L002_R1_001.fastq.gz  | TAMUIC_IGC_001949_S79_L002_R2_001.fastq.gz  | SAMN181725 | 97 |
| TAMUIC-IGC-001950 | Kosciuscola | tasmanic us | StClair | Australia: Tasmania, Lake St Clair, Derwent Bridge (-42.13268, 146.23166) | TAMUIC_IGC_001950_S213_L005_R1_001.fastq.gz | TAMUIC_IGC_001950_S213_L005_R2_001.fastq.gz | SAMN181725 | 98 |
| TAMUIC-IGC-001951 | Kosciuscola | tasmanic us | StClair | Australia: Tasmania, Lake St Clair, Derwent Bridge (-42.13268, 146.23166) | TAMUIC_IGC_001951_S51_L002_R1_001.fastq.gz  | TAMUIC_IGC_001951_S51_L002_R2_001.fastq.gz  | SAMN181725 | 99 |
| TAMUIC-IGC-001952 | Kosciuscola | tasmanic us | StClair | Australia: Tasmania, Lake St Clair, Derwent Bridge (-42.13268, 146.23166) | TAMUIC_IGC_001952_S217_L005_R1_001.fastq.gz | TAMUIC_IGC_001952_S217_L005_R2_001.fastq.gz | SAMN181726 | 00 |
| TAMUIC-IGC-001953 | Kosciuscola | tasmanic us | StClair | Australia: Tasmania, Lake St Clair, Derwent Bridge (-42.13268, 146.23166) | TAMUIC_IGC_001953_S206_L005_R1_001.fastq.gz | TAMUIC_IGC_001953_S206_L005_R2_001.fastq.gz | SAMN181726 | 01 |
| TAMUIC-IGC-001954 | Kosciuscola | tasmanic us | StClair | Australia: Tasmania, Lake St Clair, Derwent Bridge (-42.13268, 146.23166) | TAMUIC_IGC_001954_S252_L006_R1_001.fastq.gz | TAMUIC_IGC_001954_S252_L006_R2_001.fastq.gz | SAMN181726 | 02 |
| TAMUIC-IGC-001955 | Kosciuscola | tasmanic us | StClair | Australia: Tasmania, Lake St Clair, Derwent Bridge (-42.13268, 146.23166) | TAMUIC_IGC_001955_S62_L002_R1_001.fastq.gz  | TAMUIC_IGC_001955_S62_L002_R2_001.fastq.gz  | SAMN181726 | 03 |
| TAMUIC-IGC-001956 | Kosciuscola | tasmanic us | StClair | Australia: Tasmania, Lake St Clair, Derwent Bridge (-42.13268, 146.23166) | TAMUIC_IGC_001956_S219_L005_R1_001.fastq.gz | TAMUIC_IGC_001956_S219_L005_R2_001.fastq.gz | SAMN181726 | 04 |
| TAMUIC-IGC-001957 | Kosciuscola | tasmanic us | Miena   | Australia: Tasmania, Miena, Miena Rd (-42.09886, 146.51686)               | TAMUIC_IGC_001957_S146_L004_R1_001.fastq.gz | TAMUIC_IGC_001957_S146_L004_R2_001.fastq.gz | SAMN181726 | 05 |
| TAMUIC-IGC-001958 | Kosciuscola | tasmanic us | Miena   | Australia: Tasmania, Miena, Miena Rd (-42.09886, 146.51686)               | TAMUIC_IGC_001958_S53_L002_R1_001.fastq.gz  | TAMUIC_IGC_001958_S53_L002_R2_001.fastq.gz  | SAMN181726 | 06 |
| TAMUIC-IGC-001959 | Kosciuscola | tasmanic us | Miena   | Australia: Tasmania, Miena, Miena Rd (-42.09886, 146.51686)               | TAMUIC_IGC_001959_S47_L002_R1_001.fastq.gz  | TAMUIC_IGC_001959_S47_L002_R2_001.fastq.gz  | SAMN181726 | 07 |
| TAMUIC-IGC-001960 | Kosciuscola | tasmanic us | Miena   | Australia: Tasmania, Miena, Miena Rd (-42.09886, 146.51686)               | TAMUIC_IGC_001960_S70_L002_R1_001.fastq.gz  | TAMUIC_IGC_001960_S70_L002_R2_001.fastq.gz  | SAMN181726 | 08 |
| TAMUIC-IGC-001961 | Kosciuscola | tasmanic us | Miena   | Australia: Tasmania, Miena, Miena Rd (-42.09886, 146.51686)               | TAMUIC_IGC_001961_S212_L005_R1_001.fastq.gz | TAMUIC_IGC_001961_S212_L005_R2_001.fastq.gz | SAMN181726 | 09 |



|                   |             |            |           |   |   |   |                  |
|-------------------|-------------|------------|-----------|---|---|---|------------------|
| TAMUIC-IGC-001962 | Kosciuscola | tasmanicus | Miena     | Australia: Tasmania, Miena, Miena Rd (-42.09886, 146.51686) | TAMUIC_IGC_001962_S149_L004_R1_001.fastq.gz | TAMUIC_IGC_001962_S149_L004_R2_001.fastq.gz | SAMN181726<br>10 |
| TAMUIC-IGC-001963 | Kosciuscola | tasmanicus | Miena     | Australia: Tasmania, Miena, Miena Rd (-42.09886, 146.51686) | TAMUIC_IGC_001963_S58_L002_R1_001.fastq.gz  | TAMUIC_IGC_001963_S58_L002_R2_001.fastq.gz  | SAMN181726<br>11 |
| TAMUIC-IGC-001964 | Kosciuscola | tasmanicus | Miena     | Australia: Tasmania, Miena, Miena Rd (-42.09886, 146.51686) | TAMUIC_IGC_001964_S52_L002_R1_001.fastq.gz  | TAMUIC_IGC_001964_S52_L002_R2_001.fastq.gz  | SAMN181726<br>12 |
| TAMUIC-IGC-001965 | Kosciuscola | tasmanicus | Miena     | Australia: Tasmania, Miena, Miena Rd (-42.09886, 146.51686) | TAMUIC_IGC_001965_S216_L005_R1_001.fastq.gz | TAMUIC_IGC_001965_S216_L005_R2_001.fastq.gz | SAMN181726<br>13 |
| TAMUIC-IGC-001966 | Kosciuscola | tasmanicus | Miena     | Australia: Tasmania, Miena, Miena Rd (-42.09886, 146.51686) | TAMUIC_IGC_001966_S215_L005_R1_001.fastq.gz | TAMUIC_IGC_001966_S215_L005_R2_001.fastq.gz | SAMN181726<br>14 |
| TAMUIC-IGC-001967 | Kosciuscola | cuneatus   | TinMine   | Australia: TinMine, F1 (-36.70005, 148.25055)               | TAMUIC_IGC_001967_S205_L005_R1_001.fastq.gz | TAMUIC_IGC_001967_S205_L005_R2_001.fastq.gz | SAMN181726<br>15 |
| TAMUIC-IGC-001968 | Kosciuscola | cognatus   | TinMine   | Australia: TinMine, F3 (-36.70005, 148.01575)               | TAMUIC_IGC_001968_S67_L002_R1_001.fastq.gz  | TAMUIC_IGC_001968_S67_L002_R2_001.fastq.gz  | SAMN181726<br>16 |
| TAMUIC-IGC-001969 | Kosciuscola | cognatus   | TinMine   | Australia: TinMine, F3 (-36.70005, 148.01575)               | TAMUIC_IGC_001969_S154_L004_R1_001.fastq.gz | TAMUIC_IGC_001969_S154_L004_R2_001.fastq.gz | SAMN181726<br>17 |
| TAMUIC-IGC-001970 | Kosciuscola | cognatus   | TinMine   | Australia: TinMine, F3 (-36.70005, 148.01575)               | TAMUIC_IGC_001970_S63_L002_R1_001.fastq.gz  | TAMUIC_IGC_001970_S63_L002_R2_001.fastq.gz  | SAMN181726<br>18 |
| TAMUIC-IGC-001972 | Kosciuscola | tristis    | Stronachs | Australia: Stronachs, A1 (-37.76014, 146.22523)             | TAMUIC_IGC_001972_S222_L005_R1_001.fastq.gz | TAMUIC_IGC_001972_S222_L005_R2_001.fastq.gz | SAMN181726<br>19 |
| TAMUIC-IGC-001973 | Kosciuscola | tristis    | Stronachs | Australia: Stronachs, A1 (-37.76014, 146.22523)             | TAMUIC_IGC_001973_S85_L002_R1_001.fastq.gz  | TAMUIC_IGC_001973_S85_L002_R2_001.fastq.gz  | SAMN181726<br>20 |
| TAMUIC-IGC-001974 | Kosciuscola | tristis    | Stronachs | Australia: Stronachs, A1 (-37.76014, 146.22523)             | TAMUIC_IGC_001974_S76_L002_R1_001.fastq.gz  | TAMUIC_IGC_001974_S76_L002_R2_001.fastq.gz  | SAMN181726<br>21 |
| TAMUIC-IGC-001976 | Kosciuscola | tristis    | Skene     | Australia: Skene, A3 (-37.4687, 146.22523)                  | TAMUIC_IGC_001976_S66_L002_R1_001.fastq.gz  | TAMUIC_IGC_001976_S66_L002_R2_001.fastq.gz  | SAMN181726<br>22 |
| TAMUIC-IGC-001977 | Kosciuscola | tristis    | Skene     | Australia: Skene, A3 (-37.4687, 146.22523)                  | TAMUIC_IGC_001977_S83_L002_R1_001.fastq.gz  | TAMUIC_IGC_001977_S83_L002_R2_001.fastq.gz  | SAMN181726<br>23 |
| TAMUIC-IGC-001979 | Kosciuscola | tristis    | Skene     | Australia: Skene, A3 (-37.4687, 146.22523)                  | TAMUIC_IGC_001979_S254_L006_R1_001.fastq.gz | TAMUIC_IGC_001979_S254_L006_R2_001.fastq.gz | SAMN181726<br>24 |
| TAMUIC-IGC-001980 | Kosciuscola | tristis    | Sunday    | Australia: Sunday, B1 (-37.35218, 146.39339)                | TAMUIC_IGC_001980_S82_L002_R1_001.fastq.gz  | TAMUIC_IGC_001980_S82_L002_R2_001.fastq.gz  | SAMN181726<br>25 |
| TAMUIC-IGC-001982 | Kosciuscola | tristis    | Sunday    | Australia: Sunday, B1 (-37.35218, 146.39339)                | TAMUIC_IGC_001982_S155_L004_R1_001.fastq.gz | TAMUIC_IGC_001982_S155_L004_R2_001.fastq.gz | SAMN181726<br>26 |
| TAMUIC-IGC-001983 | Kosciuscola | tristis    | Sunday    | Australia: Sunday, B1 (-37.35218, 146.39339)                | TAMUIC_IGC_001983_S243_L006_R1_001.fastq.gz | TAMUIC_IGC_001983_S243_L006_R2_001.fastq.gz | SAMN181726<br>27 |
| TAMUIC-IGC-001984 | Kosciuscola | tristis    | Sunday    | Australia: Sunday, B1 (-37.35218, 146.39339)                | TAMUIC_IGC_001984_S65_L002_R1_001.fastq.gz  | TAMUIC_IGC_001984_S65_L002_R2_001.fastq.gz  | SAMN181726<br>28 |
| TAMUIC-IGC-001985 | Kosciuscola | tristis    | Magdala   | Australia: Magdala, B4 (-37.1958, 146.48756)                | TAMUIC_IGC_001985_S151_L004_R1_001.fastq.gz | TAMUIC_IGC_001985_S151_L004_R2_001.fastq.gz | SAMN181726<br>29 |

|                   |             |          |           |  |   |   |            |    |
|-------------------|-------------|----------|-----------|--|---|---|------------|----|
| TAMUIC-IGC-001988 | Kosciuscola | tristis  | Magdala   | Australia: Magdala, B4 (-37.1958, 146.48756)     | TAMUIC_IGC_001988_S81_L002_R1_001.fastq.gz  | TAMUIC_IGC_001988_S81_L002_R2_001.fastq.gz  | SAMN181726 | 30 |
| TAMUIC-IGC-001989 | Kosciuscola | tristis  | Magdala   | Australia: Magdala, B4 (-37.1958, 146.48756)     | TAMUIC_IGC_001989_S147_L004_R1_001.fastq.gz | TAMUIC_IGC_001989_S147_L004_R2_001.fastq.gz | SAMN181726 | 31 |
| TAMUIC-IGC-001990 | Kosciuscola | cuneatus | Magdala   | Australia: Magdala, B4 (-37.1958, 146.48756)     | TAMUIC_IGC_001990_S239_L006_R1_001.fastq.gz | TAMUIC_IGC_001990_S239_L006_R2_001.fastq.gz | SAMN181726 | 32 |
| TAMUIC-IGC-001992 | Kosciuscola | tristis  | Selwyn    | Australia: Selwyn, B3 (-37.05345, 146.72719)     | TAMUIC_IGC_001992_S78_L002_R1_001.fastq.gz  | TAMUIC_IGC_001992_S78_L002_R2_001.fastq.gz  | SAMN181726 | 33 |
| TAMUIC-IGC-001995 | Kosciuscola | tristis  | Selwyn    | Australia: Selwyn, B3 (-37.05345, 146.72719)     | TAMUIC_IGC_001995_S77_L002_R1_001.fastq.gz  | TAMUIC_IGC_001995_S77_L002_R2_001.fastq.gz  | SAMN181726 | 34 |
| TAMUIC-IGC-001996 | Kosciuscola | tristis  | Selwyn    | Australia: Selwyn, B3 (-37.05345, 146.72719)     | TAMUIC_IGC_001996_S246_L006_R1_001.fastq.gz | TAMUIC_IGC_001996_S246_L006_R2_001.fastq.gz | SAMN181726 | 35 |
| TAMUIC-IGC-001997 | Kosciuscola | tristis  | Selwyn    | Australia: Selwyn, B3 (-37.05345, 146.72719)     | TAMUIC_IGC_001997_S73_L002_R1_001.fastq.gz  | TAMUIC_IGC_001997_S73_L002_R2_001.fastq.gz  | SAMN181726 | 36 |
| TAMUIC-IGC-001998 | Kosciuscola | cuneatus | Selwyn    | Australia: Selwyn, B3B (-37.04022, 146.89156)    | TAMUIC_IGC_001998_S45_L002_R1_001.fastq.gz  | TAMUIC_IGC_001998_S45_L002_R2_001.fastq.gz  | SAMN181726 | 37 |
| TAMUIC-IGC-001999 | Kosciuscola | tristis  | MacDonald | Australia: MacDonald, B5 (-37.28841, 146.4247)   | TAMUIC_IGC_001999_S88_L002_R1_001.fastq.gz  | TAMUIC_IGC_001999_S88_L002_R2_001.fastq.gz  | SAMN181726 | 38 |
| TAMUIC-IGC-002000 | Kosciuscola | tristis  | MacDonald | Australia: MacDonald, B5 (-37.28841, 146.4247)   | TAMUIC_IGC_002000_S156_L004_R1_001.fastq.gz | TAMUIC_IGC_002000_S156_L004_R2_001.fastq.gz | SAMN181726 | 39 |
| TAMUIC-IGC-002001 | Kosciuscola | tristis  | MacDonald | Australia: MacDonald, B5 (-37.28841, 146.4247)   | TAMUIC_IGC_002001_S218_L005_R1_001.fastq.gz | TAMUIC_IGC_002001_S218_L005_R2_001.fastq.gz | SAMN181726 | 40 |
| TAMUIC-IGC-002002 | Kosciuscola | tristis  | MacDonald | Australia: MacDonald, B5 (-37.28841, 146.4247)   | TAMUIC_IGC_002002_S211_L005_R1_001.fastq.gz | TAMUIC_IGC_002002_S211_L005_R2_001.fastq.gz | SAMN181726 | 41 |
| TAMUIC-IGC-002003 | Kosciuscola | tristis  | MacDonald | Australia: MacDonald, B5 (-37.28841, 146.4247)   | TAMUIC_IGC_002003_S74_L002_R1_001.fastq.gz  | TAMUIC_IGC_002003_S74_L002_R2_001.fastq.gz  | SAMN181726 | 42 |
| TAMUIC-IGC-002004 | Kosciuscola | cuneatus | MacDonald | Australia: MacDonald, B5C (-37.28246, 146.46753) | TAMUIC_IGC_002004_S64_L002_R1_001.fastq.gz  | TAMUIC_IGC_002004_S64_L002_R2_001.fastq.gz  | SAMN181726 | 43 |
| TAMUIC-IGC-002005 | Kosciuscola | tristis  | Viking    | Australia: Viking, B2 (-37.11916, 146.60074)     | TAMUIC_IGC_002005_S75_L002_R1_001.fastq.gz  | TAMUIC_IGC_002005_S75_L002_R2_001.fastq.gz  | SAMN181726 | 44 |
| TAMUIC-IGC-002006 | Kosciuscola | tristis  | Viking    | Australia: Viking, B2 (-37.11916, 146.60074)     | TAMUIC_IGC_002006_S208_L005_R1_001.fastq.gz | TAMUIC_IGC_002006_S208_L005_R2_001.fastq.gz | SAMN181726 | 45 |
| TAMUIC-IGC-002007 | Kosciuscola | tristis  | Viking    | Australia: Viking, B2 (-37.11916, 146.60074)     | TAMUIC_IGC_002007_S209_L005_R1_001.fastq.gz | TAMUIC_IGC_002007_S209_L005_R2_001.fastq.gz | SAMN181726 | 46 |
| TAMUIC-IGC-002008 | Kosciuscola | tristis  | Viking    | Australia: Viking, B2 (-37.11916, 146.60074)     | TAMUIC_IGC_002008_S214_L005_R1_001.fastq.gz | TAMUIC_IGC_002008_S214_L005_R2_001.fastq.gz | SAMN181726 | 47 |
| TAMUIC-IGC-002009 | Kosciuscola | tristis  | Viking    | Australia: Viking, B2 (-37.11916, 146.60074)     | TAMUIC_IGC_002009_S204_L005_R1_001.fastq.gz | TAMUIC_IGC_002009_S204_L005_R2_001.fastq.gz | SAMN181726 | 48 |
| TAMUIC-IGC-002010 | Kosciuscola | cuneatus | Viking    | Australia: Viking, B2 (-37.11916, 146.60074)     | TAMUIC_IGC_002010_S68_L002_R1_001.fastq.gz  | TAMUIC_IGC_002010_S68_L002_R2_001.fastq.gz  | SAMN181726 | 49 |

|                   |             |          |            |  |   |   |            |    |
|-------------------|-------------|----------|------------|--|---|---|------------|----|
| TAMUIC-IGC-002011 | Kosciuscola | cuneatus | Viking     | Australia: Viking, B2 (-37.11916, 146.60074)     | TAMUIC_IGC_002011_S266_L006_R1_001.fastq.gz | TAMUIC_IGC_002011_S266_L006_R2_001.fastq.gz | SAMN181726 | 50 |
| TAMUIC-IGC-002012 | Kosciuscola | cuneatus | HappyJacks | Australia: HappyJacks, D4 (-36.04914, 148.37036) | TAMUIC_IGC_002012_S1_L005_R1_001.fastq.gz   | TAMUIC_IGC_002012_S1_L005_R2_001.fastq.gz   | SAMN181726 | 51 |
| TAMUIC-IGC-002013 | Kosciuscola | cognatus | HappyJacks | Australia: HappyJacks, D4 (-36.04914, 148.37036) | TAMUIC_IGC_002013_S2_L005_R1_001.fastq.gz   | TAMUIC_IGC_002013_S2_L005_R2_001.fastq.gz   | SAMN181726 | 52 |
| TAMUIC-IGC-002014 | Kosciuscola | usitatus | HappyJacks | Australia: HappyJacks, D4 (-36.04914, 148.37036) | TAMUIC_IGC_002014_S3_L005_R1_001.fastq.gz   | TAMUIC_IGC_002014_S3_L005_R2_001.fastq.gz   | SAMN181726 | 53 |
| TAMUIC-IGC-002015 | Kosciuscola | cuneatus | HappyJacks | Australia: HappyJacks, D4 (-36.04914, 148.37036) | TAMUIC_IGC_002015_S4_L005_R1_001.fastq.gz   | TAMUIC_IGC_002015_S4_L005_R2_001.fastq.gz   | SAMN181726 | 54 |
| TAMUIC-IGC-002016 | Kosciuscola | cognatus | HappyJacks | Australia: HappyJacks, D4 (-36.04914, 148.37036) | TAMUIC_IGC_002016_S5_L005_R1_001.fastq.gz   | TAMUIC_IGC_002016_S5_L005_R2_001.fastq.gz   | SAMN181726 | 55 |
| TAMUIC-IGC-002017 | Kosciuscola | usitatus | HappyJacks | Australia: HappyJacks, D4 (-36.04914, 148.37036) | TAMUIC_IGC_002017_S6_L005_R1_001.fastq.gz   | TAMUIC_IGC_002017_S6_L005_R2_001.fastq.gz   | SAMN181726 | 56 |
| TAMUIC-IGC-002018 | Kosciuscola | usitatus | HappyJacks | Australia: HappyJacks, D4 (-36.04914, 148.37036) | TAMUIC_IGC_002018_S267_L006_R1_001.fastq.gz | TAMUIC_IGC_002018_S267_L006_R2_001.fastq.gz | SAMN181726 | 57 |
| TAMUIC-IGC-002019 | Kosciuscola | cuneatus | Jagungal   | Australia: Jagungal, D5B (-36.15092, 148.35063)  | TAMUIC_IGC_002019_S264_L006_R1_001.fastq.gz | TAMUIC_IGC_002019_S264_L006_R2_001.fastq.gz | SAMN181726 | 58 |
| TAMUIC-IGC-002020 | Kosciuscola | tristis  | Strumbo    | Australia: Strumbo, D5 (-36.19154, 148.38507)    | TAMUIC_IGC_002020_S7_L005_R1_001.fastq.gz   | TAMUIC_IGC_002020_S7_L005_R2_001.fastq.gz   | SAMN181726 | 59 |
| TAMUIC-IGC-002021 | Kosciuscola | usitatus | Strumbo    | Australia: Strumbo, D5 (-36.19154, 148.38507)    | TAMUIC_IGC_002021_S265_L006_R1_001.fastq.gz | TAMUIC_IGC_002021_S265_L006_R2_001.fastq.gz | SAMN181726 | 60 |
| TAMUIC-IGC-002022 | Kosciuscola | usitatus | Strumbo    | Australia: Strumbo, D5 (-36.19154, 148.38507)    | TAMUIC_IGC_002022_S8_L005_R1_001.fastq.gz   | TAMUIC_IGC_002022_S8_L005_R2_001.fastq.gz   | SAMN181726 | 61 |
| TAMUIC-IGC-002023 | Kosciuscola | usitatus | Strumbo    | Australia: Strumbo, D5 (-36.19154, 148.38507)    | TAMUIC_IGC_002023_S158_L004_R1_001.fastq.gz | TAMUIC_IGC_002023_S158_L004_R2_001.fastq.gz | SAMN181726 | 62 |
| TAMUIC-IGC-002024 | Kosciuscola | usitatus | Strumbo    | Australia: Strumbo, D5 (-36.19154, 148.38507)    | TAMUIC_IGC_002024_S263_L006_R1_001.fastq.gz | TAMUIC_IGC_002024_S263_L006_R2_001.fastq.gz | SAMN181726 | 63 |
| TAMUIC-IGC-002025 | Kosciuscola | usitatus | Strumbo    | Australia: Strumbo, D5 (-36.19154, 148.38507)    | TAMUIC_IGC_002025_S9_L005_R1_001.fastq.gz   | TAMUIC_IGC_002025_S9_L005_R2_001.fastq.gz   | SAMN181726 | 64 |
| TAMUIC-IGC-002026 | Kosciuscola | cuneatus | Strumbo    | Australia: Strumbo, D5 (-36.19154, 148.38507)    | TAMUIC_IGC_002026_S10_L005_R1_001.fastq.gz  | TAMUIC_IGC_002026_S10_L005_R2_001.fastq.gz  | SAMN181726 | 65 |
| TAMUIC-IGC-002027 | Kosciuscola | cognatus | Strumbo    | Australia: Strumbo, D5 (-36.19154, 148.38507)    | TAMUIC_IGC_002027_S168_L004_R1_001.fastq.gz | TAMUIC_IGC_002027_S168_L004_R2_001.fastq.gz | SAMN181726 | 66 |
| TAMUIC-IGC-002030 | Kosciuscola | usitatus | Tabletop   | Australia: Tabletop, D1B (-35.92875, 148.50928)  | TAMUIC_IGC_002030_S161_L004_R1_001.fastq.gz | TAMUIC_IGC_002030_S161_L004_R2_001.fastq.gz | SAMN181726 | 67 |
| TAMUIC-IGC-002031 | Kosciuscola | usitatus | Tabletop   | Australia: Tabletop, D1B (-35.92875, 148.50928)  | TAMUIC_IGC_002031_S171_L004_R1_001.fastq.gz | TAMUIC_IGC_002031_S171_L004_R2_001.fastq.gz | SAMN181726 | 68 |
| TAMUIC-IGC-002032 | Kosciuscola | cuneatus | Tabletop   | Australia: Tabletop, D1B (-35.92875, 148.50928)  | TAMUIC_IGC_002032_S11_L005_R1_001.fastq.gz  | TAMUIC_IGC_002032_S11_L005_R2_001.fastq.gz  | SAMN181726 | 69 |

|                   |             |          |          |   |   |   |                  |
|-------------------|-------------|----------|----------|---|---|---|------------------|
| TAMUIC-IGC-002033 | Kosciuscola | cuneatus | Tabletop | Australia: Tabletop, D1B (-35.92875, 148.50928) | TAMUIC_IGC_002033_S12_L005_R1_001.fastq.gz  | TAMUIC_IGC_002033_S12_L005_R2_001.fastq.gz  | SAMN181726<br>70 |
| TAMUIC-IGC-002036 | Kosciuscola | cognatus | Tabletop | Australia: Tabletop, D1 (-35.97084, 148.53456)  | TAMUIC_IGC_002036_S13_L005_R1_001.fastq.gz  | TAMUIC_IGC_002036_S13_L005_R2_001.fastq.gz  | SAMN181726<br>71 |
| TAMUIC-IGC-002039 | Kosciuscola | cognatus | Tabletop | Australia: Tabletop, D1 (-35.97084, 148.53456)  | TAMUIC_IGC_002039_S172_L004_R1_001.fastq.gz | TAMUIC_IGC_002039_S172_L004_R2_001.fastq.gz | SAMN181726<br>72 |
| TAMUIC-IGC-002040 | Kosciuscola | usitatus | Whites   | Australia: Whites, D3 (-36.30508, 148.25475)    | TAMUIC_IGC_002040_S176_L004_R1_001.fastq.gz | TAMUIC_IGC_002040_S176_L004_R2_001.fastq.gz | SAMN181726<br>73 |
| TAMUIC-IGC-002041 | Kosciuscola | usitatus | Whites   | Australia: Whites, D3 (-36.30508, 148.25475)    | TAMUIC_IGC_002041_S14_L005_R1_001.fastq.gz  | TAMUIC_IGC_002041_S14_L005_R2_001.fastq.gz  | SAMN181726<br>74 |
| TAMUIC-IGC-002042 | Kosciuscola | cognatus | Whites   | Australia: Whites, D3 (-36.30508, 148.25475)    | TAMUIC_IGC_002042_S15_L005_R1_001.fastq.gz  | TAMUIC_IGC_002042_S15_L005_R2_001.fastq.gz  | SAMN181726<br>75 |
| TAMUIC-IGC-002043 | Kosciuscola | usitatus | Whites   | Australia: Whites, D3 (-36.30508, 148.25475)    | TAMUIC_IGC_002043_S258_L006_R1_001.fastq.gz | TAMUIC_IGC_002043_S258_L006_R2_001.fastq.gz | SAMN181726<br>76 |
| TAMUIC-IGC-002044 | Kosciuscola | tristis  | Whites   | Australia: Whites, D3 (-36.30508, 148.25475)    | TAMUIC_IGC_002044_S16_L005_R1_001.fastq.gz  | TAMUIC_IGC_002044_S16_L005_R2_001.fastq.gz  | SAMN181726<br>77 |
| TAMUIC-IGC-002045 | Kosciuscola | tristis  | Whites   | Australia: Whites, D3 (-36.30508, 148.25475)    | TAMUIC_IGC_002045_S174_L004_R1_001.fastq.gz | TAMUIC_IGC_002045_S174_L004_R2_001.fastq.gz | SAMN181726<br>78 |
| TAMUIC-IGC-002046 | Kosciuscola | tristis  | Whites   | Australia: Whites, D3 (-36.30508, 148.25475)    | TAMUIC_IGC_002046_S162_L004_R1_001.fastq.gz | TAMUIC_IGC_002046_S162_L004_R2_001.fastq.gz | SAMN181726<br>79 |
| TAMUIC-IGC-002047 | Kosciuscola | cuneatus | Whites   | Australia: Whites, D3 (-36.30508, 148.25475)    | TAMUIC_IGC_002047_S17_L005_R1_001.fastq.gz  | TAMUIC_IGC_002047_S17_L005_R2_001.fastq.gz  | SAMN181726<br>80 |
| TAMUIC-IGC-002048 | Kosciuscola | tristis  | Whites   | Australia: Whites, D3 (-36.30508, 148.25475)    | TAMUIC_IGC_002048_S166_L004_R1_001.fastq.gz | TAMUIC_IGC_002048_S166_L004_R2_001.fastq.gz | SAMN181726<br>81 |
| TAMUIC-IGC-002049 | Kosciuscola | cognatus | Whites   | Australia: Whites, D3 (-36.30508, 148.25475)    | TAMUIC_IGC_002049_S18_L005_R1_001.fastq.gz  | TAMUIC_IGC_002049_S18_L005_R2_001.fastq.gz  | SAMN181726<br>82 |
| TAMUIC-IGC-002050 | Kosciuscola | cognatus | Whites   | Australia: Whites, D3 (-36.30508, 148.25475)    | TAMUIC_IGC_002050_S19_L005_R1_001.fastq.gz  | TAMUIC_IGC_002050_S19_L005_R2_001.fastq.gz  | SAMN181726<br>83 |
| TAMUIC-IGC-002051 | Kosciuscola | cognatus | Whites   | Australia: Whites, D3 (-36.30508, 148.25475)    | TAMUIC_IGC_002051_S175_L004_R1_001.fastq.gz | TAMUIC_IGC_002051_S175_L004_R2_001.fastq.gz | SAMN181726<br>84 |
| TAMUIC-IGC-002052 | Kosciuscola | cuneatus | Whites   | Australia: Whites, D3 (-36.30508, 148.25475)    | TAMUIC_IGC_002052_S20_L005_R1_001.fastq.gz  | TAMUIC_IGC_002052_S20_L005_R2_001.fastq.gz  | SAMN181726<br>85 |
| TAMUIC-IGC-002053 | Kosciuscola | cognatus | Whites   | Australia: Whites, D3 (-36.30508, 148.25475)    | TAMUIC_IGC_002053_S159_L004_R1_001.fastq.gz | TAMUIC_IGC_002053_S159_L004_R2_001.fastq.gz | SAMN181726<br>86 |
| TAMUIC-IGC-002054 | Kosciuscola | cognatus | Whites   | Australia: Whites, D3 (-36.30508, 148.25475)    | TAMUIC_IGC_002054_S260_L006_R1_001.fastq.gz | TAMUIC_IGC_002054_S260_L006_R2_001.fastq.gz | SAMN181726<br>87 |
| TAMUIC-IGC-002055 | Kosciuscola | cognatus | Whites   | Australia: Whites, D3 (-36.30508, 148.25475)    | TAMUIC_IGC_002055_S170_L004_R1_001.fastq.gz | TAMUIC_IGC_002055_S170_L004_R2_001.fastq.gz | SAMN181726<br>88 |
| TAMUIC-IGC-002056 | Kosciuscola | usitatus | Cascade  | Australia: Cascade, F2 (-36.58188, 148.25055)   | TAMUIC_IGC_002056_S164_L004_R1_001.fastq.gz | TAMUIC_IGC_002056_S164_L004_R2_001.fastq.gz | SAMN181726<br>89 |

|                   |             |          |            |  |   |   |              |
|-------------------|-------------|----------|------------|--|---|---|--------------|
| TAMUIC-IGC-002057 | Kosciuscola | usitatus | Cascade    | Australia: Cascade, F2 (-36.58188, 148.25055)    | TAMUIC_IGC_002057_S21_L005_R1_001.fastq.gz  | TAMUIC_IGC_002057_S21_L005_R2_001.fastq.gz  | SAMN18172690 |
| TAMUIC-IGC-002058 | Kosciuscola | cognatus | Cascade    | Australia: Cascade, F2C (-36.56486, 148.25229)   | TAMUIC_IGC_002058_S22_L005_R1_001.fastq.gz  | TAMUIC_IGC_002058_S22_L005_R2_001.fastq.gz  | SAMN18172691 |
| TAMUIC-IGC-002059 | Kosciuscola | cognatus | Cascade    | Australia: Cascade, F2C (-36.56486, 148.25229)   | TAMUIC_IGC_002059_S23_L005_R1_001.fastq.gz  | TAMUIC_IGC_002059_S23_L005_R2_001.fastq.gz  | SAMN18172692 |
| TAMUIC-IGC-002062 | Kosciuscola | usitatus | Limestone  | Australia: Limestone, F4B (-36.8177, 148.07275)  | TAMUIC_IGC_002062_S24_L005_R1_001.fastq.gz  | TAMUIC_IGC_002062_S24_L005_R2_001.fastq.gz  | SAMN18172693 |
| TAMUIC-IGC-002064 | Kosciuscola | cognatus | Tantangara | Australia: Tantangara, D2 (-35.83066, 148.47067) | TAMUIC_IGC_002064_S26_L005_R1_001.fastq.gz  | TAMUIC_IGC_002064_S26_L005_R2_001.fastq.gz  | SAMN18172694 |
| TAMUIC-IGC-002065 | Kosciuscola | cognatus | Tantangara | Australia: Tantangara, D2 (-35.83066, 148.47067) | TAMUIC_IGC_002065_S261_L006_R1_001.fastq.gz | TAMUIC_IGC_002065_S261_L006_R2_001.fastq.gz | SAMN18172695 |
| TAMUIC-IGC-002066 | Kosciuscola | usitatus | Tantangara | Australia: Tantangara, D2 (-35.83066, 148.47067) | TAMUIC_IGC_002066_S27_L005_R1_001.fastq.gz  | TAMUIC_IGC_002066_S27_L005_R2_001.fastq.gz  | SAMN18172696 |
| TAMUIC-IGC-002067 | Kosciuscola | cuneatus | Tantangara | Australia: Tantangara, D2 (-35.83066, 148.47067) | TAMUIC_IGC_002067_S28_L005_R1_001.fastq.gz  | TAMUIC_IGC_002067_S28_L005_R2_001.fastq.gz  | SAMN18172697 |
| TAMUIC-IGC-002068 | Kosciuscola | cognatus | Tantangara | Australia: Tantangara, D2 (-35.83066, 148.47067) | TAMUIC_IGC_002068_S29_L005_R1_001.fastq.gz  | TAMUIC_IGC_002068_S29_L005_R2_001.fastq.gz  | SAMN18172698 |
| TAMUIC-IGC-002069 | Kosciuscola | usitatus | Cooleman   | Australia: Cooleman, E1B (-35.62349, 148.6761)   | TAMUIC_IGC_002069_S30_L005_R1_001.fastq.gz  | TAMUIC_IGC_002069_S30_L005_R2_001.fastq.gz  | SAMN18172699 |
| TAMUIC-IGC-002070 | Kosciuscola | cuneatus | Cooleman   | Australia: Cooleman, E1B (-35.62349, 148.6761)   | TAMUIC_IGC_002070_S177_L004_R1_001.fastq.gz | TAMUIC_IGC_002070_S177_L004_R2_001.fastq.gz | SAMN18172700 |
| TAMUIC-IGC-002071 | Kosciuscola | cognatus | Cooleman   | Australia: Cooleman, E1B (-35.62349, 148.6761)   | TAMUIC_IGC_002071_S31_L005_R1_001.fastq.gz  | TAMUIC_IGC_002071_S31_L005_R2_001.fastq.gz  | SAMN18172701 |
| TAMUIC-IGC-002072 | Kosciuscola | cuneatus | Cooleman   | Australia: Cooleman, E1B (-35.62349, 148.6761)   | TAMUIC_IGC_002072_S160_L004_R1_001.fastq.gz | TAMUIC_IGC_002072_S160_L004_R2_001.fastq.gz | SAMN18172702 |
| TAMUIC-IGC-002073 | Kosciuscola | cognatus | Cooleman   | Australia: Cooleman, E1B (-35.62349, 148.6761)   | TAMUIC_IGC_002073_S32_L005_R1_001.fastq.gz  | TAMUIC_IGC_002073_S32_L005_R2_001.fastq.gz  | SAMN18172703 |
| TAMUIC-IGC-002074 | Kosciuscola | cognatus | Cooleman   | Australia: Cooleman, E1 (-35.66343, 148.79753)   | TAMUIC_IGC_002074_S33_L005_R1_001.fastq.gz  | TAMUIC_IGC_002074_S33_L005_R2_001.fastq.gz  | SAMN18172704 |
| TAMUIC-IGC-002075 | Kosciuscola | cognatus | Cooleman   | Australia: Cooleman, E1 (-35.66343, 148.79753)   | TAMUIC_IGC_002075_S34_L005_R1_001.fastq.gz  | TAMUIC_IGC_002075_S34_L005_R2_001.fastq.gz  | SAMN18172705 |
| TAMUIC-IGC-002076 | Kosciuscola | cognatus | Cooleman   | Australia: Cooleman, E1 (-35.66343, 148.79753)   | TAMUIC_IGC_002076_S35_L005_R1_001.fastq.gz  | TAMUIC_IGC_002076_S35_L005_R2_001.fastq.gz  | SAMN18172706 |
| TAMUIC-IGC-002078 | Kosciuscola | cognatus | Long       | Australia: Long, E5 (-35.71898, 148.56584)       | TAMUIC_IGC_002078_S36_L005_R1_001.fastq.gz  | TAMUIC_IGC_002078_S36_L005_R2_001.fastq.gz  | SAMN18172707 |
| TAMUIC-IGC-002079 | Kosciuscola | cognatus | Long       | Australia: Long, E5 (-35.71898, 148.56584)       | TAMUIC_IGC_002079_S37_L005_R1_001.fastq.gz  | TAMUIC_IGC_002079_S37_L005_R2_001.fastq.gz  | SAMN18172708 |
| TAMUIC-IGC-002080 | Kosciuscola | cognatus | Long       | Australia: Long, E5 (-35.71898, 148.56584)       | TAMUIC_IGC_002080_S259_L006_R1_001.fastq.gz | TAMUIC_IGC_002080_S259_L006_R2_001.fastq.gz | SAMN18172709 |

|                   |             |          |         |  |   |   |            |    |
|-------------------|-------------|----------|---------|--|---|---|------------|----|
| TAMUIC-IGC-002081 | Kosciuscola | cognatus | Long    | Australia: Long, E5 (-35.71898, 148.56584)     | TAMUIC_IGC_002081_S38_L005_R1_001.fastq.gz  | TAMUIC_IGC_002081_S38_L005_R2_001.fastq.gz  | SAMN181727 | 10 |
| TAMUIC-IGC-002082 | Kosciuscola | cognatus | Long    | Australia: Long, E5 (-35.71898, 148.56584)     | TAMUIC_IGC_002082_S167_L004_R1_001.fastq.gz | TAMUIC_IGC_002082_S167_L004_R2_001.fastq.gz | SAMN181727 | 11 |
| TAMUIC-IGC-002084 | Kosciuscola | cognatus | Bimberi | Australia: Bimberi, E4D (-35.66882, 148.79749) | TAMUIC_IGC_002084_S39_L005_R1_001.fastq.gz  | TAMUIC_IGC_002084_S39_L005_R2_001.fastq.gz  | SAMN181727 | 12 |
| TAMUIC-IGC-002086 | Kosciuscola | usitatus | Bimberi | Australia: Bimberi, E4D (-35.66882, 148.79749) | TAMUIC_IGC_002086_S169_L004_R1_001.fastq.gz | TAMUIC_IGC_002086_S169_L004_R2_001.fastq.gz | SAMN181727 | 13 |
| TAMUIC-IGC-002089 | Kosciuscola | usitatus | Bimberi | Australia: Bimberi, E4D (-35.66882, 148.79749) | TAMUIC_IGC_002089_S163_L004_R1_001.fastq.gz | TAMUIC_IGC_002089_S163_L004_R2_001.fastq.gz | SAMN181727 | 14 |
| TAMUIC-IGC-002090 | Kosciuscola | cognatus | Bimberi | Australia: Bimberi, E4C (-35.66991, 148.79869) | TAMUIC_IGC_002090_S262_L006_R1_001.fastq.gz | TAMUIC_IGC_002090_S262_L006_R2_001.fastq.gz | SAMN181727 | 15 |
| TAMUIC-IGC-002091 | Kosciuscola | cuneatus | Bimberi | Australia: Bimberi, E4C (-35.66991, 148.79869) | TAMUIC_IGC_002091_S173_L004_R1_001.fastq.gz | TAMUIC_IGC_002091_S173_L004_R2_001.fastq.gz | SAMN181727 | 16 |
| TAMUIC-IGC-002092 | Kosciuscola | cuneatus | Bimberi | Australia: Bimberi, E4C (-35.66991, 148.79869) | TAMUIC_IGC_002092_S165_L004_R1_001.fastq.gz | TAMUIC_IGC_002092_S165_L004_R2_001.fastq.gz | SAMN181727 | 17 |
| TAMUIC-IGC-002093 | Kosciuscola | usitatus | Bimberi | Australia: Bimberi, E4C (-35.66991, 148.79869) | TAMUIC_IGC_002093_S40_L005_R1_001.fastq.gz  | TAMUIC_IGC_002093_S40_L005_R2_001.fastq.gz  | SAMN181727 | 18 |
| TAMUIC-IGC-002094 | Kosciuscola | cognatus | Bimberi | Australia: Bimberi, E4C (-35.66991, 148.79869) | TAMUIC_IGC_002094_S41_L005_R1_001.fastq.gz  | TAMUIC_IGC_002094_S41_L005_R2_001.fastq.gz  | SAMN181727 | 19 |
| TAMUIC-IGC-002095 | Kosciuscola | cognatus | Bimberi | Australia: Bimberi, E4B (-35.67461, 148.552)   | TAMUIC_IGC_002095_S157_L004_R1_001.fastq.gz | TAMUIC_IGC_002095_S157_L004_R2_001.fastq.gz | SAMN181727 | 20 |
| TAMUIC-IGC-002096 | Kosciuscola | cognatus | Bimberi | Australia: Bimberi, E4B (-35.67461, 148.552)   | TAMUIC_IGC_002096_S42_L005_R1_001.fastq.gz  | TAMUIC_IGC_002096_S42_L005_R2_001.fastq.gz  | SAMN181727 | 21 |
| TAMUIC-IGC-002097 | Kosciuscola | cognatus | Bimberi | Australia: Bimberi, E4B (-35.67461, 148.552)   | TAMUIC_IGC_002097_S43_L005_R1_001.fastq.gz  | TAMUIC_IGC_002097_S43_L005_R2_001.fastq.gz  | SAMN181727 | 22 |
| TAMUIC-IGC-002098 | Kosciuscola | cognatus | Bimberi | Australia: Bimberi, E4B (-35.67461, 148.552)   | TAMUIC_IGC_002098_S44_L005_R1_001.fastq.gz  | TAMUIC_IGC_002098_S44_L005_R2_001.fastq.gz  | SAMN181727 | 23 |

Table S1B

| Sample ID         | Genus       | Species  | Collecting locality  | Code       | Name                 | Genbank Accession Number |          |              |
|-------------------|-------------|----------|--|------------|----------------------|--------------------------|----------|--------------|
|                   |             |          |  |            |                      | COI                      | COII     | COIII        |
| TAMUIC-IGC-001776 | Kosciuscola | tristis  | Australia: BawBaw, St Gwinear (-37.83347, 146.30814)           | BawBaw     | tristis (BawBaw)     | MW646102                 | MW646228 | MW64616<br>5 |
| TAMUIC-IGC-001782 | Kosciuscola | tristis  | Australia: Buller, Black Diamond (-37.1493, 146.439)           | Buller     | tristis (Buller)     | MW646103                 | MW646229 | MW64616<br>6 |
| TAMUIC-IGC-001785 | Kosciuscola | tristis  | Australia: Stirling, Post 37 (-37.12401, 146.49937)            | Stirling   | tristis (Stirling)   | MW646104                 | MW646230 | MW64616<br>7 |
| TAMUIC-IGC-001791 | Kosciuscola | tristis  | Australia: Hotham, Ormond Lodge (-36.98902, 147.14702)         | Hotham     | tristis (Hotham)     | MW646105                 | MW646231 | MW64616<br>8 |
| TAMUIC-IGC-001794 | Kosciuscola | usitatus | Australia: Hotham, Mt Hotham (-36.98902, 147.14639)            | Hotham     | usitatus (Hotham)    | MW646106                 | MW646232 | MW64616<br>9 |
| TAMUIC-IGC-001799 | Kosciuscola | cognatus | Australia: WBHP, Dibbins Hut (-36.94837, 147.18297)            | WBHP       | cognatus (WBHP)      | MW646107                 | MW646233 | MW64617<br>0 |
| TAMUIC-IGC-001805 | Kosciuscola | tristis  | Australia: WBHP, Cope summit saddle (-36.92661, 147.27841)     | WBHP       | tristis (WBHP)       | MW646108                 | MW646234 | MW64617<br>1 |
| TAMUIC-IGC-001809 | Kosciuscola | usitatus | Australia: WBHP, Cope summit saddle (-36.92661, 147.27841)     | WBHP       | usitatus (WBHP)      | MW646109                 | MW646235 | MW64617<br>2 |
| TAMUIC-IGC-001817 | Kosciuscola | cognatus | Australia: Cobberas, Native dog flat (-36.89827, 148.09123)    | Cobberas   | cognatus (Cobberas)  | MW646110                 | MW646236 | MW64617<br>3 |
| TAMUIC-IGC-001822 | Kosciuscola | tristis  | Australia: Feathertop, Federation hut (-36.89696, 147.11234)   | Feathertop | tristis (Feathertop) | MW646111                 | MW646237 | MW64617<br>4 |
| TAMUIC-IGC-001825 | Kosciuscola | cuneatus | Australia: WBHP, Mt Jaithmathang summit (-36.89026, 147.19231) | WBHP       | cuneatus (WBHP)      | MW646112                 | MW646238 | MW64617<br>5 |
| TAMUIC-IGC-001830 | Kosciuscola | usitatus | Australia: Cobberas, Brumby tracks (-36.8757, 148.11533)       | Cobberas   | usitatus (Cobberas)  | MW646113                 | MW646239 | MW64617<br>6 |
| TAMUIC-IGC-001837 | Kosciuscola | tristis  | Australia: EBHP, Cleve Cole hut (-36.75586, 147.32664)         | EBHP       | tristis (EBHP)       | MW646114                 | MW646240 | MW64617<br>7 |
| TAMUIC-IGC-001843 | Kosciuscola | usitatus | Australia: EBHP, Cleve Cole hut (-36.75586, 147.32664)         | EBHP       | usitatus (EBHP)      | MW646115                 | MW646241 | MW64617<br>8 |
| TAMUIC-IGC-001845 | Kosciuscola | tristis  | Australia: Buffalo, Corral carpark (-36.75529, 146.79135)      | Buffalo    | tristis (Buffalo)    | MW646116                 | MW646242 | MW64617<br>9 |
| TAMUIC-IGC-001850 | Kosciuscola | cuneatus | Australia: EBHP, Eskdale spur 4 (-36.72366, 147.31488)         | EBHP       | cuneatus (EBHP)      | MW646117                 | MW646243 | MW64618<br>0 |
| TAMUIC-IGC-001857 | Kosciuscola | cuneatus | Australia: Buffalo, Mt McLeod summit (-36.69513, 146.78908)    | Buffalo    | cuneatus (Buffalo)   | MW646118                 | MW646244 | MW64618<br>1 |
| TAMUIC-IGC-001860 | Kosciuscola | cognatus | Australia: Thredbo, DHG wombat hole (-36.51389, 148.2878)      | Thredbo    | cognatus (Thredbo)   | MW646119                 | MW646245 | MW64618<br>2 |
| TAMUIC-IGC-001866 | Kosciuscola | cuneatus | Australia: Thredbo, DHG wombat hole (-36.51389, 148.2878)      | Thredbo    | cuneatus (Thredbo)   | MW646120                 | MW646246 | MW64618<br>3 |
| TAMUIC-IGC-001871 | Kosciuscola | tristis  | Australia: Thredbo, Mt Flat (-36.49532, 148.29497)             | Thredbo    | tristis (Thredbo)    | MW646121                 | MW646247 | MW64618<br>4 |

|                   |             |            |   |           |                       |          |          |          |
|-------------------|-------------|------------|---|-----------|-----------------------|----------|----------|----------|
| TAMUIC-IGC-001876 | Kosciuscola | usitatus   | Australia: Thredbo, Mt Flat (-36.49532, 148.29497)                        | Thredbo   | usitatus (Thredbo)    | MW646122 | MW646248 | MW646185 |
| TAMUIC-IGC-001882 | Kosciuscola | tristis    | Australia: Townsend, Townsend summit (-36.42245, 148.25883)               | Townsend  | tristis (Townsend)    | MW646123 | MW646249 | MW646186 |
| TAMUIC-IGC-001883 | Kosciuscola | usitatus   | Australia: Townsend, Townsend summit (-36.42245, 148.25883)               | Townsend  | usitatus (Townsend)   | MW646124 | MW646250 | MW646187 |
| TAMUIC-IGC-001889 | Kosciuscola | cognatus   | Australia: Tate, Tate lift (-36.37334, 148.3678)                          | Tate      | cognatus (Tate)       | MW646125 | MW646251 | MW646188 |
| TAMUIC-IGC-001897 | Kosciuscola | tristis    | Australia: Tate, Mid Tate lift (-36.37263, 148.35495)                     | Tate      | tristis (Tate)        | MW646126 | MW646252 | MW646189 |
| TAMUIC-IGC-001900 | Kosciuscola | usitatus   | Australia: Tate, Tate knoll (-36.36229, 148.35495)                        | Tate      | usitatus (Tate)       | MW646127 | MW646253 | MW646190 |
| TAMUIC-IGC-001905 | Kosciuscola | usitatus   | Australia: Jagungal, Jagungal slope (-36.1493, 148.41019)                 | Jagungal  | usitatus (Jagungal)   | MW646128 | MW646254 | MW646191 |
| TAMUIC-IGC-001911 | Kosciuscola | tristis    | Australia: Jagungal, Jagungal summit (-36.1481, 148.38754)                | Jagungal  | tristis (Jagungal)    | MW646129 | MW646255 | MW646192 |
| TAMUIC-IGC-001915 | Kosciuscola | cognatus   | Australia: Jagungal, Cesjack's Hut (-36.14526, 148.45255)                 | Jagungal  | cognatus (Jagungal)   | MW646130 | MW646256 | MW646193 |
| TAMUIC-IGC-001924 | Kosciuscola | cuneatus   | Australia: Gingera, Mt Gingera (-35.57593, 148.77913)                     | Gingera   | cuneatus (Gingera)    | MW646131 | MW646257 | MW646194 |
| TAMUIC-IGC-001930 | Kosciuscola | usitatus   | Australia: Gingera, Mt Gingera (-35.57593, 148.77913)                     | Gingera   | usitatus (Gingera)    | MW646132 | MW646258 | MW646195 |
| TAMUIC-IGC-001937 | Kosciuscola | tasmanicus | Australia: Tasmania, Bronte Park, Dee Rd (-42.24059, 146.54063)           | Tasmania  | tasmanicus (Tasmania) | MW646133 | MW646259 | MW646196 |
| TAMUIC-IGC-001949 | Kosciuscola | tasmanicus | Australia: Tasmania, Lake St Clair, Derwent Bridge (-42.13268, 146.23166) | Tasmania  | tasmanicus (Tasmania) | MW646134 | MW646260 | MW646197 |
| TAMUIC-IGC-001959 | Kosciuscola | tasmanicus | Australia: Tasmania, Miena, Miena Rd (-42.09886, 146.51686)               | Tasmania  | tasmanicus (Tasmania) | MW646135 | MW646261 | MW646198 |
| TAMUIC-IGC-001967 | Kosciuscola | cuneatus   | Australia: TinMine, F1 (-36.70005, 148.25055)                             | TinMine   | cuneatus (TinMine)    | MW646136 | MW646262 | MW646199 |
| TAMUIC-IGC-001968 | Kosciuscola | cognatus   | Australia: TinMine, F3 (-36.70005, 148.01575)                             | TinMine   | cognatus (TinMine)    | MW646137 | MW646263 | MW646200 |
| TAMUIC-IGC-001972 | Kosciuscola | tristis    | Australia: Stronachs, A1 (-37.76014, 146.22523)                           | Stronachs | tristis (Stronachs)   | MW646138 | MW646264 | MW646201 |
| TAMUIC-IGC-001977 | Kosciuscola | tristis    | Australia: Skene, A3 (-37.4687, 146.22523)                                | Skene     | tristis (Skene)       | MW646139 | MW646265 | MW646202 |
| TAMUIC-IGC-001980 | Kosciuscola | tristis    | Australia: Sunday, B1 (-37.35218, 146.39339)                              | Sunday    | tristis (Sunday)      | MW646140 | MW646266 | MW646203 |
| TAMUIC-IGC-001988 | Kosciuscola | tristis    | Australia: Magdala, B4 (-37.1958, 146.48756)                              | Magdala   | tristis (Magdala)     | MW646141 | MW646267 | MW646204 |
| TAMUIC-IGC-001990 | Kosciuscola | cuneatus   | Australia: Magdala, B4 (-37.1958, 146.48756)                              | Magdala   | cuneatus (Magdala)    | MW646142 | MW646268 | MW646205 |
| TAMUIC-IGC-001996 | Kosciuscola | tristis    | Australia: Selwyn, B3 (-37.05345, 146.72719)                              | Selwyn    | tristis (Selwyn)      | MW646143 | MW646269 | MW646206 |
| TAMUIC-IGC-001998 | Kosciuscola | cuneatus   | Australia: Selwyn, B3B (-37.04022, 146.89156)                             | Selwyn    | cuneatus (Selwyn)     | MW646144 | MW646270 | MW646207 |
| TAMUIC-IGC-002000 | Kosciuscola | tristis    | Australia: MacDonald, B5 (-37.28841, 146.4247)                            | MacDonald | tristis (MacDonald)   | MW646145 | MW646271 | MW646208 |



|                   |             |          |  |            |                       |          |          |          |
|-------------------|-------------|----------|--|------------|-----------------------|----------|----------|----------|
| TAMUIC-IGC-002004 | Kosciuscola | cuneatus | Australia: MacDonald, B5C (-37.28246, 146.46753) | MacDonald  | cuneatus (MacDonald)  | MW646146 | MW646272 | MW646209 |
| TAMUIC-IGC-002006 | Kosciuscola | tristis  | Australia: Viking, B2 (-37.11916, 146.60074)     | Viking     | tristis (Viking)      | MW646147 | MW646273 | MW646210 |
| TAMUIC-IGC-002010 | Kosciuscola | cuneatus | Australia: Viking, B2 (-37.11916, 146.60074)     | Viking     | cuneatus (Viking)     | MW646148 | MW646274 | MW646211 |
| TAMUIC-IGC-002012 | Kosciuscola | cognatus | Australia: HappyJacks, D4 (-36.04914, 148.37036) | HappyJacks | cognatus (HappyJacks) | MW646149 | MW646275 | MW646212 |
| TAMUIC-IGC-002019 | Kosciuscola | cuneatus | Australia: Jagungal, D5B (-36.15092, 148.35063)  | Jagungal   | cuneatus (Jagungal)   | MW646150 | MW646276 | MW646213 |
| TAMUIC-IGC-002020 | Kosciuscola | usitatus | Australia: Strumbo, D5 (-36.19154, 148.38507)    | Strumbo    | usitatus (Strumbo)    | MW646151 | MW646277 | MW646214 |
| TAMUIC-IGC-002027 | Kosciuscola | cognatus | Australia: Strumbo, D5 (-36.19154, 148.38507)    | Strumbo    | cognatus (Strumbo)    | MW646152 | MW646278 | MW646215 |
| TAMUIC-IGC-002030 | Kosciuscola | usitatus | Australia: Tabletop, D1B (-35.92875, 148.50928)  | Tabletop   | usitatus (Tabletop)   | MW646153 | MW646279 | MW646216 |
| TAMUIC-IGC-002039 | Kosciuscola | cognatus | Australia: Tabletop, D1 (-35.97084, 148.53456)   | Tabletop   | cognatus (Tabletop)   | MW646154 | MW646280 | MW646217 |
| TAMUIC-IGC-002040 | Kosciuscola | tristis  | Australia: Whites, D3 (-36.30508, 148.25475)     | Whites     | tristis (Whites)      | MW646155 | MW646281 | MW646218 |
| TAMUIC-IGC-002052 | Kosciuscola | cognatus | Australia: Whites, D3 (-36.30508, 148.25475)     | Whites     | cognatus (Whites)     | MW646156 | MW646282 | MW646219 |
| TAMUIC-IGC-002056 | Kosciuscola | usitatus | Australia: Cascade, F2 (-36.58188, 148.25055)    | Cascade    | usitatus (Cascade)    | MW646157 | MW646283 | MW646220 |
| TAMUIC-IGC-002059 | Kosciuscola | cuneatus | Australia: Cascade, F2C (-36.56486, 148.25229)   | Cascade    | cuneatus (Cascade)    | MW646158 | MW646284 | MW646221 |
| TAMUIC-IGC-002071 | Kosciuscola | cuneatus | Australia: Cooleman, E1B (-35.62349, 148.6761)   | Cooleman   | cuneatus (Cooleman)   | MW646159 | MW646285 | MW646222 |
| TAMUIC-IGC-002075 | Kosciuscola | cognatus | Australia: Cooleman, E1 (-35.66343, 148.79753)   | Cooleman   | cognatus (Cooleman)   | MW646160 | MW646286 | MW646223 |
| TAMUIC-IGC-002082 | Kosciuscola | cognatus | Australia: Long, E5 (-35.71898, 148.56584)       | Long       | cognatus (Long)       | MW646161 | MW646287 | MW646224 |
| TAMUIC-IGC-002089 | Kosciuscola | usitatus | Australia: Bimberi, E4D (-35.66882, 148.79749)   | Bimberi    | usitatus (Bimberi)    | MW646162 | MW646288 | MW646225 |
| TAMUIC-IGC-002090 | Kosciuscola | cognatus | Australia: Bimberi, E4C (-35.66991, 148.79869)   | Bimberi    | cognatus (Bimberi)    | MW646163 | MW646289 | MW646226 |
| TAMUIC-IGC-002098 | Kosciuscola | cognatus | Australia: Bimberi, E4B (-35.67461, 148.552)     | Bimberi    | cognatus (Bimberi)    | MW646164 | MW646290 | MW646227 |

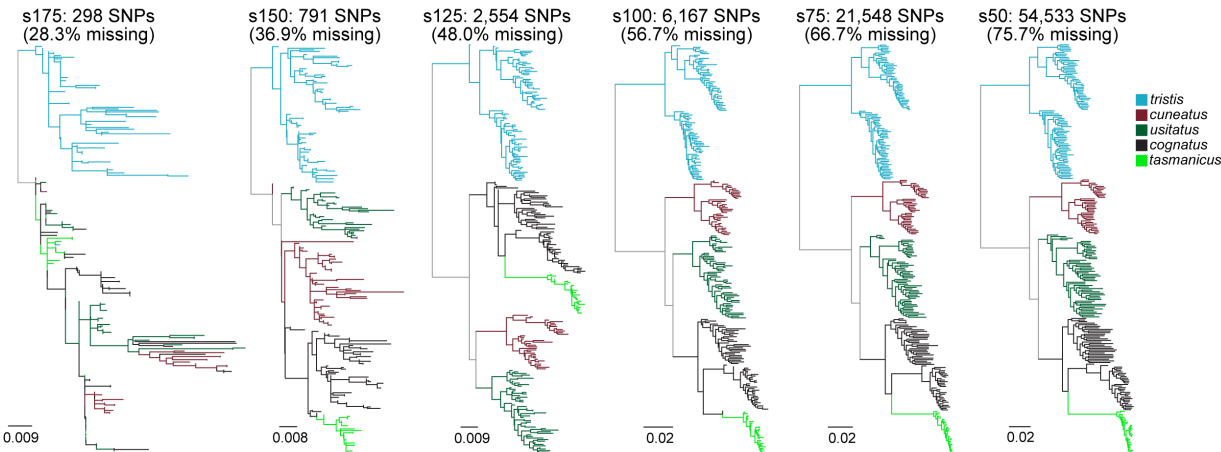
**Table S2** Summary of missing data, aligned base pairs and total SNPs.

| <b>Dataset</b> | <b>Proportion of missing data</b> | <b>Total number of aligned base pairs</b> | <b>Total number of SNPs</b> |
|----------------|-----------------------------------|---|-----------------------------|
| s175           | 28.26%                            | 559                                       | 298                         |
| s150           | 36.91%                            | 1,492                                     | 791                         |
| s125           | 48.05%                            | 6,698                                     | 2,554                       |
| s100           | 56.68%                            | 23,168                                    | 6,167                       |
| s75            | 66.66%                            | 115,767                                   | 21,548                      |
| s50            | 75.72%                            | 520,760                                   | 54,533                      |

**Figure S1** Map of the sampling transect, which followed the Australian Alps Walking Track marked here in red.



**Figure S2.** Sensitivity analysis across six RAD datasets (s175, s150, s125, s100, s75, and s50) analysed in a maximum likelihood framework varying the amounts of SNPs and missing data. For each dataset, the number of SNPs and the proportion missing data are noted. Each tree is an unrooted network showing branch lengths, and each branch is colour-coded by five *sensu lato* species of *Kosciuscola*.



**Figure S3.** Sensitivity analysis across six RAD datasets (s175, s150, s125, s100, s75, and s50) analysed in a multicoalescence species tree analysis framework based on 12 putative species varying the amounts of SNPs and missing data. For each dataset, the number of SNPs and the proportion missing data are noted. Each tree is an unrooted network showing branch lengths, and each branch is colour-coded by five *sensu lato* species of *Kosciuscola*.

