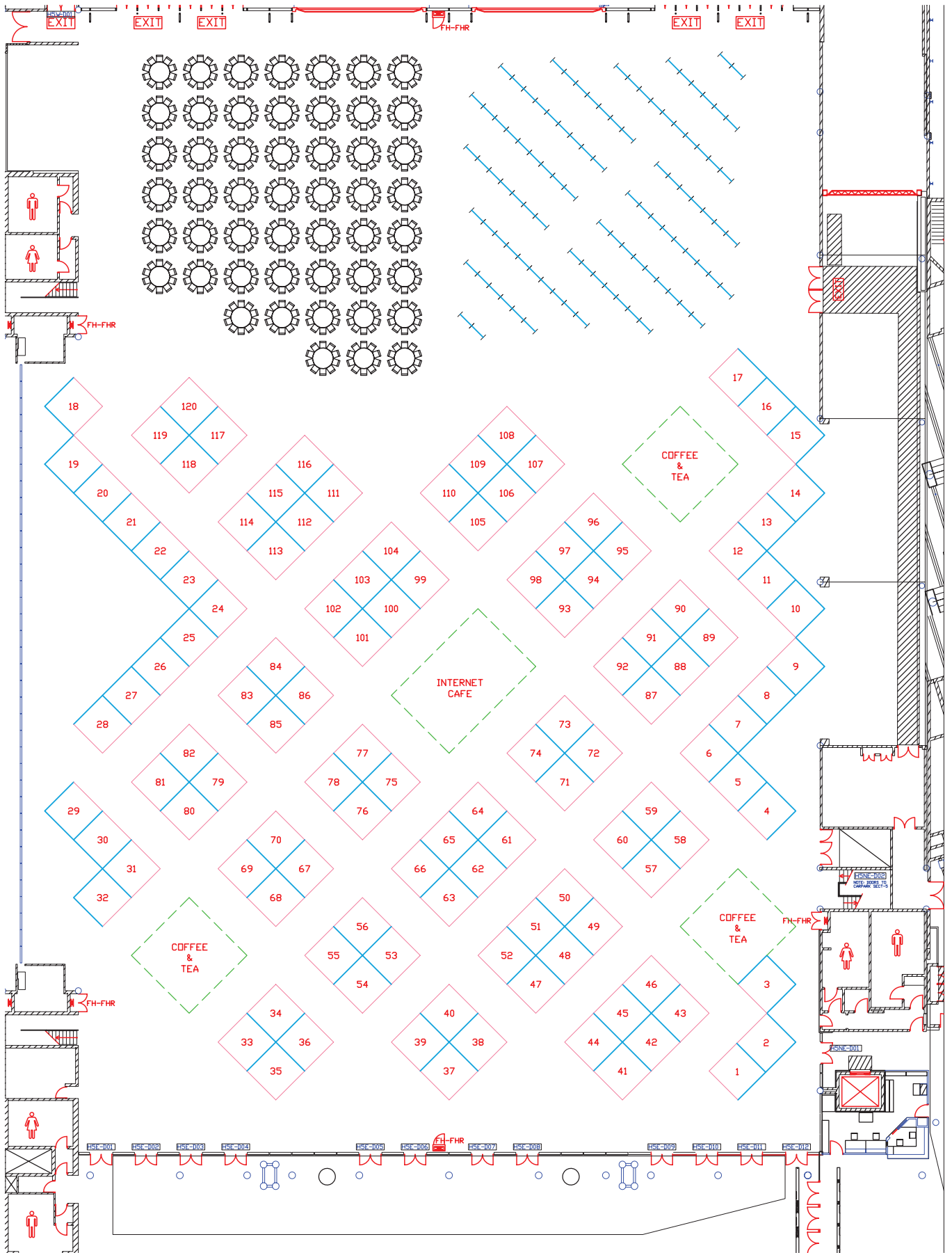


SECTION 2

EXHIBITION

EXHIBITION





© copyright of Moreton Hire

Company	Booth
3-D Geo Pty Ltd	108
Aarhus Geophysics ApS	102
Absolute Geophysics	9
Advanced Geosciences Inc.	5
Advanced Logic Technology S.A.	65
Aerosystems	106
Alpha Geoscience Pty Ltd	71 & 72
Archimedes Financial Planning Pty Ltd	101
ASEG-PESA	36
AuScope Ltd	6
Baoding Earth Science & Technology Co. Ltd	97
Bell Geospace Limited	120
CGGVeritas (Sponsor)	41–46
Coffey Geotechnics	113
Corescan Pty Ltd	98
CSIRO (Sponsor)	64
Curtin University	30
Daishsat Geodetic Surveyors	105
Dongeofizika Ltd	25
Downhole Surveys	32
DownUnder Geosolutions	37-40
EarthByte Group	26
Electromagnetic Imaging Technology	10 & 11
Elsevier	7
Fender Geophysics	114
Fugro Airborne Surveys	48-52
Fugro Airborne Surveys	57 & 60
Fugro Ground Geophysics	47
Fugro Instruments Pty Ltd	109
GAP Geophysics Australia Pty Ltd	8
GB Geotechnics Australia	99
GEM Systems Inc.	112
GeoKinetics	103 & 104
Geological Survey of Namibia	100
Geological Survey of NSW	62
Geological Survey of QLD	56
Geological Survey of Western Australia	84
Geomole Pty Ltd	31
Geophysical Resources & Services Pty Ltd	34
GeoScience Australia (Sponsor)	54 & 55
GeoScience Victoria	24
Geosensor/Scintrex Ltd	92
GeoSoft Australia	75 & 77
GeoTech Airborne Pty Ltd	87 & 88
Geovista Ltd	14
GPX surveys	63
Groundprobe Geophysics	115
Groundwater Imaging Pty Ltd	13
Halliburton, Landmark Software and Services	27 & 28
Ikon Science	15–17
Instrumentation GDD Inc	12

Company	Booth
Intermap Technologies	94
Intrepid Geophysics	66
Iris Instruments	110
Mira Geoscience	107
Outer-Rim Exploration Services Pty Ltd (Sponsor)	96
PESA – Petroleum Exploration Society of Australia	36
Petroleum Geo-Services (PGS)	67-70
Petrosys Pty Ltd	83 & 85
PIRSA (Sponsor)	73 & 74
Pitney Bowes Business Insight	58 & 59
Polarcus	1 & 2
Quantec Geoscience Pty Ltd	79
Radiation Solutions	4
Robertson Geologging Asia	93
RPS	111
Sander Geophysics	23
Seismic Asia Pacific Pty Ltd	116
Seismic Micro Technology Inc	61
SkyTEM ApS	86
Terrex Seismic	53
TGS	118
Thomson Aviation Pty Ltd	3
Ultramag Geophysics	95
UTS-Aeroquest	90 & 91
Velseis Pty Ltd (Sponsor)	81 & 82
Vortex Geophysics Pty Ltd	89
WesternGeco/Schlumberger Australia (Sponsor)	76 & 78
Zonge Engineering & Research Organisation (Aust) Pty Ltd	33 & 35

QUANTEC

GROUND GEOPHYSICS

Projects

Mineral Exploration
Geothermal
Oil & Gas
High Voltage DC

Proven Services

Consulting
Survey Design
Data Acquisition / Processing
Modeling and Interpretation

Technologies

IP / Resistivity
Magnetotellurics (MT)
Time Domain EM (TEM)
Magnetics

Our Commitment

Premium Data Quality
Safety and Environment
Realistic Interpretations
Latest Technologies

LEADERS IN DEEP EXPLORATION

www.QuantecGeoscience.com

For information, contact Trent Retallick

Phone: 0733590444

Email: tretallick@quantecgeoscience.com



Quantec
Geoscience

BOREHOLE WIRELINE

For Logging & Interpretation Service

Geophysical Borehole Logging

Acoustic / Optical BH Image Processing

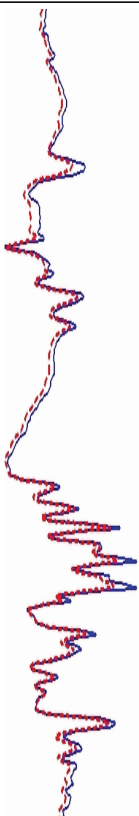
Uranium • Coal • CBM • Iron Ore •
Geothermal • Groundwater • Geotechnical

Units operating throughout Australia.

(Vehicle based & Portable)

www.borehole-wireline.com.au

2 Wilfrid St, Edwardstown. SA. 5039. Tel: 08 8351 3255



3D-GEO PTY LTD**Booth 108**

Level 5, 114 Flinders Street
Melbourne, VIC 3000, Australia
Tel: +61 3 9639 8028
Fax: +61 3 9011 6126
Emails: Info@3D-GEO.com, Keven@3D-GEO.com
Website: www.3D-GEO.com
Contact: Keven Asquith, Director

3D-GEO Pty Ltd is a geological modelling consultancy based in Melbourne, Australia. With a collaborative mixture of petroleum, minerals, geothermal and CCS industry experience and academic rigour, 3D-GEO provides innovative solutions to a broad range of clients across the Australasia region and the Middle East. 3D-GEO has demonstrated expertise in seismic interpretation, seismic attribute and inversion modelling, structural analysis, sequence stratigraphy, and basin modelling as well as in remote sensing, environmental monitoring, regolith-landscape reconstructions and geochemistry in the extensional and compressional basins of Australia, Asia and the Middle East.

AARHUS GEOPHYSICS APS**Booth 102**

Hoegh Guldbergs Gade 2
Aarhus C 8000, Denmark
Tel: +45 4696 3932
Emails: info@aarhusgeo.com, andrea.viezzoli@aarhusgeo.com
Website: www.aarhusgeo.com
Contact: Andrea Viezzoli, Manager

Aarhus Geophysics ApS is a world recognized consulting company expert in processing and inversion of airborne electromagnetic data, from any AEM system. Our services include feasibility studies, survey planning, QC of data acquisition, data processing and inversion, software development. Our goal is to deliver the best quantitative results from AEM data, results that can be used directly for management or drilling. We offer top quality results and products for those that need it, without taking shortcuts. Aarhus Geophysics ApS can also reprocess old datasets for extracting added valuable information from them.

ABSOLUTE GEOPHYSICS**Booth 9**

6/9 The Avenue
Midland, WA 6056, Australia
Tel: +61 8 9250 8100
Fax: +61 9 9250 7100
Email: aduncan@absolutegeo.com.au
Website: www.absolutegeo.com.au
Contact: Andrew Duncan

Absolute Geophysics Pty Ltd is a business formed in 2008 to offer a unique service in total field electromagnetic surveys. Absolute Geophysics is a joint venture between Electromagnetic Imaging Technology Pty Ltd and Gap Geophysics Pty Ltd. Absolute Geophysics operates the SAMSON B-field ground TEM system which can be deployed in fixed or moving loop modes. SAMSON offers very low noise data acquisition at low base frequencies and is often operated at base frequencies as low as 0.125 Hz. It is an excellent tool for the detection of highly conductive targets and/or the discrimination of highly conductive targets from host responses. Short station occupation times

and logistical simplicity mean that high production rates can be achieved in addition to high data quality.

ADVANCED GEOSCIENCES INC.**Booth 5**

2121 Geoscience Drive
Austin, Texas 78726, USA
Tel: +1 512 335 3338
Fax: +1 512 258 9958
Email: brad@agiusa.com
Website: www.agiusa.com
Contact: Bradley Carr

Advanced Geosciences Inc. (AGI) is a leading manufacturer of automatic and manual earth resistivity, induced polarization, and self-potential equipment for imaging and profiling the subsurface. Additionally, AGI is the developer of EarthImager Resistivity and IP inversion software as well as SP Analyzer software. AGI's sophisticated products include SuperSting R8/IP, SuperSting Marine, MiniSting, PowerSting External Transmitters (5kW, 10kW and 15kW), dual-mode and passive electrode cables with patented borehole and marine graphite electrodes, and Earthimager 1D, 2D and 3D inversion software (with roll-along, time lapse and forward modeling capabilities).

ADVANCED LOGIC TECHNOLOGY S.A.**Booth 65**

36th Floor, Menara Maxis
Kuala Lumpur City Centre
50088 Kuala Lumpur, Malaysia
Tel: +60 3 2615 7261
Fax: +60 3 2615 0088
Email: rien.corstanje@alt.lu
Website: www.alt.lu
Contact: Rien Corstanje

ALT – Advanced Logic Technology is a leading developer and supplier of data processing software and borehole logging equipment, including:

- WellCAD 4.3: log processing, core description and borehole data display software
- Stackable slim hole geophysical logging tools
- Acoustic and optic televiwer for cased and open hole inspection
- Medium and high temperature & pressure range acoustic televiwer suitable for geothermal logging
- Data acquisition systems

AEROSYSTEMS**Booth 106**

Tel: +61 8 8532 5973
Fax: +61 8 8531 0684
Email: info@aerosystems.com.au
Website: www.aerosystems.com.au
Contact: Andrew McCarthy
Mob: 0419042860

Aerosystems is a wholly Australian owned geophysical survey company that specialises in the rapid acquisition of high quality radiometric, magnetic and GPS data. We utilize the latest high resolution, industry leading airborne technologies available on the market to provide a total solution for the acquisition of magnetic, radiometric and DTM data throughout Australia.

ALPHA GEOSCIENCE PTY LTD

Booths 71 & 72

Unit 1, 43 Stanley Street
Peakhurst, NSW 2210, Australia
Tel: +61 2 9584 7500
Fax: +61 2 9584 7599
Emails: info@alpha-geo.com, tpippett@alpha-geo.com
Website: www.alpha-geo.com
Contact: Timothy (Tim) Pippett

Alpha Geoscience is a diverse geophysical company supplying geophysical instruments, contracting and consulting services to the exploration, mining, environmental, civil engineering, UXO and near surface industries in Australia and around the world. Alpha is the exclusive worldwide geophysical distributor for the terraTEM transient EM system and the magROCK magnetic susceptibility meter. Alpha has a range of geophysical instruments for rental, undertakes repairs on all instruments sold and provides training and post survey analysis of the data, if required.

ARCHIMEDES FINANCIAL PLANNING PTY LTD

Booth 101

3/1315 Gympie Rd
Aspley, QLD 4034, Australia
Tel: +61 07 3863 1846 or 1300 387 351
Email: Noll.Moriarty@archimedesfinancial.com.au
Website: www.archimedesfinancial.com.au
Contact: Ron Adams

Archimedes Financial Planning undertakes extremely thorough and personalised analyses of people's financial status, needs and objectives. It specialises in resource industry clients who live throughout Australia and internationally, providing highly advanced risk management techniques such as Efficient Frontier investment portfolios.

Specialist expertise areas include: Wealth creation planning; Personal insurances; Debt management; Tax planning strategies; Do-it-yourself superannuation; Corporate superannuation; Retirement Planning; Direct Securities; Mortgage broking and finance (through Australian Loan Company).

Advisers of Archimedes Financial Planning Pty Ltd provide financial services as Authorised Representatives of Professional Investment Services Pty Ltd, ABN 11 074 608 558, AFSL 234951.

ASEG – AUSTRALIAN SOCIETY OF EXPLORATION GEOPHYSICISTS

Booth 36

PO Box 8463
Perth Business Centre, WA 6849, Australia
Tel: +61 8 9427 0838
Email: secretary@aseg.org.au
Website: www.aseg.org.au
Contact: Ron Adams

The ASEG is a learned society of approximately 1400 members, embracing professional earth scientists specialising in the practical application of the principles of physics and mathematics to solve problems in a broad range of geological situations.

Its aims are to:

- promote the science of geophysics, and specifically exploration geophysics, throughout Australia

- foster fellowship and co-operation between geophysicists
- encourage closer understanding and co-operation with other earth scientists
- assist in the design and teaching of courses in geophysics and to sponsor student sections where appropriate.

AUSCOPE LTD

Booth 6

School of Earth Sciences
University of Melbourne, VIC 3010, Australia
Tel: +61 3 8344 8351
Fax: +61 3 8344 8359
Email: info@auscope.org
Website: www.auscope.org.au

AuScope is an organisation managing a national earth science infrastructure program. Through its six components – AuScope Grid and Interoperability, Simulation, Analysis and Modelling (SAM), Earth Imaging, Geospatial Framework, National Virtual Core Library and Earth Composition and Evolution – it aims to redefine knowledge transfer and access for Australian Earth Science Researchers to contribute to an Earth Model for the Australian Continent. Visitors to the AuScope booth will experience the seamless access being developed to earth science research through the AuScope Portal as well as the cutting edge work of the AuScope Simulator – a toolkit of simulation, modelling, inversion and data mining tools.

BAODING EARTH SCIENCE & TECHNOLOGY CO. LTD

Booth 97

No.1 Xinxing Road, Xushui
Baoding, Hebei 072550, China
Tel: +86 312 8691389
Fax: +86 312 8691387
Email: earth@bdest.com
Website: www.bdest.com
Contact: Yongli Liu

Baoding Earth Science & Technology Co. Ltd is specializing in producing and developing seismic geophone, seismic cable, connector, seismic exploration instrument etc., and has an Engineering Department of over 30 years combined experience. It is an ISO 9001:2008 Quality System Certified Enterprise. The products have been widely used in oil, gas and coal exploration and national defense monitoring etc.

BELL GEOSPACE LIMITED

Booth 120

Website: www.bellgeo.com
Email: mdouglas@bellgeo.com
Contact: Michael Douglas

Full Tensor Gravity Gradiometry uses one of the most sophisticated instruments ever developed to measure changes in the earth's gravity field. Data from these instruments combined with the knowledge and experience of Bell Geospace's acquisition and processing specialists, allow Bell Geospace to image density features within the earth in much greater detail than typical airborne and shipborne gravity surveys. The FTG system accurately measures extremely small changes in subsurface densities in all directions at prospect level resolution. Both the gravitational field and its gradient can be directly related to geological structures and anomalous densities such as salt, massive sulfides, kimberlites, faults, etc. Five independent

tensor measurements are measured providing both qualifiable and quantifiable physical data. When used in conjunction with other geological and geophysical data, FTG technology helps to determine and confirm the geometry of geologic structures well before drilling.

CGGVERITAS

Booths 41–46

38 Ord Street
West Perth, WA 6005, Australia
Tel: +61 8 9214 6200
Fax: +61 8 9214 6222
Emails: information.perth@cggveritas.com
Website: www.cggveritas.com
Contacts: Tony Weatherall, Suzanne Del Rosso

CGGVeritas is a global geophysical company, delivering since 1931 superior images of the earth's subsurface to our oil and gas company clients, to help them find and produce hydrocarbons both onshore and offshore. Our company is the only one of its kind in the world to develop, sell and support the complete range of geophysical products and services. The singular focus on the full spectrum of geophysics makes us unique in the E&P industry and ensures we create the best geophysical solutions to meet the local geological challenges faced by our clients.

Hampson-Russell (a CGGVeritas company) provides its renowned geophysical software, training and technical services throughout the Asia-Pacific region.

COFFEY GEOTECHNICS

Booth 113

8/12 Mars Road
Lane Cove West, NSW 2066, Australia
Postal address: PO Box 125
North Ryde, NSW 1670, Australia
Tel: +61 2 9911 1000
Fax: +61 2 9911 1001
89–91 Burswood Rd
Burswood, WA 6100, Australia
Tel: +61 8 9347 0000
Fax: +61 8 9347 0099
Email: geophysics@coffey.com
Website: www.coffey.com
Contact: Simon Stewart

Coffey Geotechnics' geophysics team delivers solution oriented geophysical consulting to the civil infrastructure, mining and exploration, environmental and groundwater markets. We use a range of techniques to identify risks and select the most effective solution for our clients. Our business is based on providing information to support design and decision making in combination with Coffey engineering technologies.

We are a part of Coffey International Limited, an ASX/S&P 300 global professional services consultancy focusing on both physical and social infrastructure. Coffey uses specialist knowledge to deliver extraordinary outcomes for clients across the full life cycle of a project, from concept to completion. Operating for 50 years, Coffey has over 4000 people working on projects in more than 80 countries and permanent offices throughout the Americas, Africa, Asia Pacific, Europe and the Middle East.

CORESCAN PTY LTD

Booth 98

Unit 13, 28 Belmont Avenue
Belmont, WA 6104, Australia
Tel: +61 8 9277 2355
Fax: +61 8 9277 2466
Emails: info@corescan.com.au, neil.goodey@corescan.com.au
Website: www.corescan.com.au
Contact: Neil Goodey
Mob: 0417 985 369

Corescan is a mining and petroleum services company specialising in the hyperspectral scanning, processing and analysis of drill core, rock chips and other geological samples for the resources, oil and gas, and geotechnical industries. The logging of drill core is one of the most important aspects of exploration and mining. Corescan provides a turn-key drill core scanning, processing and interpretation service, using specialist geoscientists and the latest scanning technology. Corescan is the partner of choice when seeking greater objectivity, quality, efficiency and value from your investment in drilling.

CSIRO

Booth 64

CSIRO Earth Science & Resource Engineering
PO Box 136
North Ryde, NSW 1670, Australia
Website: www.csiro.au/org/CESRE.html

CSIRO Materials Science & Engineering
PO Box 218
Lindfield, NSW 2070, Australia
Website: www.csiro.au/org/CMSE.html
Tel: +61 2 9490 8730
Fax: +61 2 9490 8921
Email: phil.schmidt@csiro.au
Contact: Phil Schmidt

CSIRO is a world leader in developing new techniques and insights to help find targets buried under sediments, beneath Australia's ancient blanket of deeply weathered rock and even under the ocean.

We are pioneering new ways of designing mines and mining equipment to improve efficiency, reduce costs and improve safety. We also help to ensure that the industry meets the standards of sustainability and environmental responsibility our society demands.

Our research covers the:

- discovery of mineral resources
- efficient, safe and environmentally responsible mining of those resources
- transformation of these resources into:
 - concentrates and mineral products,
 - processed minerals, such as alumina and synthetic rutile,
 - metal products, such as ingots, bars, billets and sheets,
 - development of tools and technologies to improve monitoring and processing at each stage.

CURTIN UNIVERSITY

Booth 30

GPO Box U1987
Perth, WA 6845, Australia
Tel: +61 8 9266 3565
Fax: +61 8 9266 3407

Email: a.kepic@curtin.edu.au
 Website: www.geophysics.curtin.edu.au
 Contact: Anton Kepic

The Department of Exploration Geophysics specialises in education and research in minerals, groundwater and petroleum geophysics. In 2010 the Department has 18 staff and 115 students. Since the inception of a Geophysics Program at Curtin, over 650 people have been awarded degrees at all levels. The Department is currently a member of two CRC Programs, CO₂CRC and DET CRC, and has been a state nominated Centre of Excellence in Exploration Geophysics. The petroleum arm of the research program is the Curtin Reservoir Geophysics Consortium. The annual operating budget of the department is approximately 6.5 million, most of which is received via research grants.

DAISHSAT GEODETIC SURVEYORS

Booth 105

Tel: +61 8 8531 0349
 Fax: +61 8 8531 0684
 Email: david.daish@daishsat.com
 Website: www.daishsat.com
 Contacts: David Daish (Mob: 0418 800 122), Grant Coopes (Mob: 0410 657 339), Harley Jones (Mob: 040 8843 079)

Daishsat is the leading provider of GPS positioned gravity surveys in Australia, having surveyed in excess of 1200000 gravity stations over the last 19 years since the introduction of precision GPS techniques to the exploration industry. The company has offices in South and Western Australia and is offering its gravity and precision GPS surveying services to clients around the globe who value experience, quality of service and a proven track record.

DONGEOFIZIKA LTD

Booth 25

54 Pochtovy Lane
 Tarasovsky, Tarasovsky municipality
 Rostovskaya oblast, Russia 346050
 Tel: +7 86386 3 22 22
 Email: mail@dongeofizika.ru
 Website: www.dongeofizika.ru
 Contacts: Sergey Lapin, Oleg Tsuprun

DONGEOFIZIKA was founded in 2006 as a service and sub-service company for carrying out seismic exploration works for oil and gas companies or service companies meeting difficulties in some special types of field operations. The main activity of the company is the conduction of the whole cycle of field operations in transition zones or individual types of works in shallow waters, extremely shallow-water zones, water-land boundaries, and the adjoining land. The integrated quality control is carried out at all the stages of seismic operations. The company was awarded the ISO 9001, ISO 14000, ISO 18000 certificates. The mobile and office processing systems such as RadExPro, SPW, and GeoCluster are used for the quality control.

The field operations are carried out with the aid of up-to-date recording, auxiliary, and technological equipment produced by SI Technology. 'SI Technology' company was founded in 1994. The basic company profile is development and production of seismic survey equipment. The goal of 'SI Technology' company is development of advanced seismic equipment of in-house fabrication, produced on their own on the basis of the world achievements potential.

Entire activity of our company from design and diagnostic inspections at the stage of pilot production and at production shops to product commissioning and management is concentrated on fulfillment of these requirements.

DOWNHOLE SURVEYS

Booth 32

PO Box 1210
 Midland, WA 6056, Australia
 Tel: +61 8 9250 1827
 Mob: 0409 289285
 Fax: +61 8 9274 8189
 Emails: info@downhole.com.au, kgillies@downhole.com.au
 Website: www.downhole.com.au
 Contact: Kate Gillies
 Mob: 0412 762528

Established in 1989 by Mike Ayris, Downhole Surveys (DHS) is a dynamic West Australian-based company specialising in directional surveying in the mining, oil and gas and civil engineering industries utilising the world's leading technologies. In addition to survey services, and sales/rental of equipment, DHS also manufacture a range of design-engineered geophysical wireline logging winches, from a portable 12v model, up to the top-of-the-range DS3000 – robust, reliable and built to last. Another unique product in their range is the Downhole Depth Encoder, a device specifically designed to measure depth of the wireline and rate of descent of the survey instrument.

DOWNUNDER GEOSOLUTIONS

Booths 37–40

80 Churchill Ave
 Subiaco, WA 6008, Australia
 Tel: +61 8 9287 4100
 Fax: +61 8 6380 2471
 Website: www.dugeo.com or www.dugsw.com

DownUnder GeoSolutions is an innovative, global geosciences company with a diverse range of capabilities. Our products and services are at the cutting edge of exploration and production services to the oil and gas industry. Our strength is the integrated approach across a comprehensive service offering:

- Seismic data processing
- Depth imaging
- Petrophysical processing and interpretation
- Geostatistical depth conversion
- Quantitative interpretation services (QI)
- Seismic acquisition design and implementation
- Full range of DUG software for all activities

We have offices in Perth, Indonesia, Kuala Lumpur, Houston and Chile.

EARTHBYTE GROUP, THE UNIVERSITY OF SYDNEY

Booth 26

Madsen Building
 School of Geosciences
 Faculty of Science
 The University of Sydney
 Sydney, NSW 2006, Australia
 Tel: +61 2 9036 6533, Prof Dietmar Müller – EarthByte head
 Tel: +61 2 9036 7175, John Cannon – Lead software developer

Fax: +61 2 9351 2442
 Emails: dietmar.muller@sydney.edu.au, john.cannon@sydney.edu.au
 Websites: www.gplates.org, www.earthbyte.org
 Contact: John Cannon

GPlates is desktop software for the interactive visualisation and quantitative analysis of plate-tectonics developed by the EarthByte Project, which materialised out of collaboration between The University of Sydney, Caltech, and Norwegian Geological survey.

GPlates offers a novel combination of GIS functionality and interactive plate-tectonic reconstructions of vector and raster data. GPlates enables both the visualisation and manipulation of plate-tectonic reconstructions and associated data through geological time.

Quantitative analyses are provided, including the generation of boundary constraint data (e.g. plate surface velocities), and ongoing development of a data mining capability to facilitate knowledge discovery through geological time.

GPlates provides interoperability by building the GPlates Geological Information Model (GPGIM) and its associated file format, the GPlates Markup Language (GPML), on the open Boothard Geography Markup Language (GML). GPlates can also interoperate with a variety of file formats including ESRI Shapefiles, and GeoSciML (coming soon).

GPlates is free software licensed under the General Public License (GPL) and runs on Windows, Linux and MacOS X.

ELECTROMAGNETIC IMAGING TECHNOLOGY Booths 10 & 11

6/9 The Avenue
 Midland, WA 6056, Australia
 Tel: +61 8 9250 8100
 Fax: +61 9 9250 7100
 Email: aduncan@electromag.com.au
 Website: www.electromag.com.au
 Contact: Andrew Duncan

ElectroMagnetic Imaging Technology Pty Ltd (EMIT) is a geophysical technology business based in Perth, Western Australia, established in 1994. EMIT develops industry-leading geophysical instrumentation and software. EMIT's main products are the SMARTem24 Receiver System, Maxwell EM Software and DigiAtlantis Borehole Magnetometer for EM. SMARTem24 is a 16-channel PC-based receiver system that has powerful signal processing, 24-bit A/Ds and full time-series recording. Maxwell software is industry Boothard in presentation, processing and interpretation of EM geophysical data. DigiAtlantis is a powerful and unique magnetometer system for borehole TEM, MMR and Magnetics – it is especially powerful for discriminating massive sulphides from weaker conductors and can be operated at very low base frequencies.

ELSEVIER Booth 7

Asia and Australasia
 Tel: +65 6 349 0222
 Email: infoapac@elsevier.com
 Websites: www.elsevier.com, www.geofacets.com

Elsevier, the world's leading publisher of science and health information, has combined world-class scientific content with

the latest technology to create Geofacets, a cutting-edge tool designed to help geoscientists as they assimilate information, analyze data, and develop models to deliver comprehensive, accurate geological assessments.

FENDER GEOPHYSICS Booth 114

1/116 Milson Rd
 Cremorne Point, NSW 2090, Australia
 Tel: +61 2 9953 1601
 Mob: 0448 493 717
 Email: asloot@bigpond.net.au
 Website: www.fendergeophysics.com.au
 Contact: Andrew Sloot

Fender Geophysics is a Sydney based geophysical contracting company with a keen focus on the minerals fields of NSW. Fender has a clear objective of providing high quality, skilled field crew and a personalised service to clients to meet their specific needs. Fender Geophysics provides geophysical services that have moved beyond pure data acquisition to a greater project focus to deliver targeted outcomes and returns. The team at Fender Geophysics is committed to providing clients with superior contracting services underpinned by innovation, operating efficiencies and customer service.

FUGRO GROUP OF COMPANIES Booths 47–52, 57 & 60

Unit 3, 435 Scarborough Beach Road
 Osborne Park, WA 6017, Australia
 Postal Address:
 PO Box 1847
 Osborne Park DC, WA 6916, Australia
 Tel: +61 8 9273 6400
 Fax: +61 8 9273 6466
 Websites: www.fugroairborne.com, www.fugro.com

Fugro collects and interprets data related to the earth's surface and the soils and rocks beneath. On the basis of this, the company provides advice, generally for purposes related to the oil and gas, mining and construction industries, including exploration and infrastructure projects. Fugro operates around the world at sea, on land and from the air, using professional, highly specialised staff supported by advanced technologies and systems, many of which have been developed in-house.

Fugro companies exhibiting at ASEG are:

- Fugro Airborne Surveys
- Fugro Data Solutions
- Fugro Electro Magnetic
- Fugro Geoteam
- Fugro Gravity and Magnetic Services
- Fugro Ground Geophysics
- Fugro Instruments
- Fugro Jason
- Fugro Multiclient Services
- Fugro Seismic Imaging

FUGRO INSTRUMENTS PTY LTD Booth 109

21 Mellor St
 West Ryde, NSW 2114, Australia
 Tel: +61 2 8878 9000
 Fax: +61 2 8878 9012

Email: sales@fugroinstruments.com
 Website: www.fugroinstruments.com
 Contact: John Peacock

FUGRO INSTRUMENTS is a leading provider of innovative geoscientific solutions for land, marine and airborne applications in the international marketplace, providing sales, rentals, servicing, manufacturing and repairs for a wide range of instrumentation covering many applications. Fugro Instruments services the Australasia-Pacific region with an extensive range of geophysical products from a selection of reputable manufacturers in North America, United Kingdom, Europe and Australia, including Radiation Solutions, Iris Instruments, Robertson Geologging, AGI, Geonics, Geometrics and many more.

Our competitive advantage comes from a strong customer focus offering leading-edge solutions and services, backed by reliability in our products and outstanding after-sales support.

GAP GEOPHYSICS AUSTRALIA PTY LIMITED Booth 8

9/170 Montague Road
 South Brisbane, QLD 4101, Australia
 Tel: +61 7 3503 2000
 Fax: +61 7 3844 0022
 Email: mcattach@gageo.com
 Website: www.gageo.com
 Contact: Dr Malcolm Cattach

Gap Geophysics Australia is a Brisbane-based technology company specialising in leading edge geophysical survey technologies and instrumentation for the mining exploration, environmental mapping and UXO remediation industries. Our services include proprietary field techniques such as Sub-Audio Magnetism (SAM), Total Field Electromagnetics (SAMSON) and Ultra High Definition Magnetism (ground and airborne). The company manufactures very sophisticated, fast sampling, total field magnetometers and high powered (up to 350amps) EM transmitters.

GB GEOTECHNICS AUSTRALIA Booth 99

18 Fennell Street
 North Parramatta, NSW 2151, Australia
 Tel: +61 2 98902122
 Fax: +61 2 9890 2922
 Email: manakitia@gbgoz.com.au, simon@gbgoz.com.au, andrew@gbgoz.com.au
 Website: www.gbgoz.com.au
 Contact: Manakitia Whata (0405 641 137)

GBG Australia is a subsidiary of the GBG Group, a multi-national company specialising in the application of geophysical and advanced applied physics for precision investigations of geotechnical, environmental sites and engineered structures in UK and Europe since 1982. GBG has had a presence in Australia since 1993, originally through a joint venture with CMPS&F and GHD before becoming a stand alone company in 2003, operating in three main areas of business: geotechnical and environmental investigations; non destructive investigation of structures; and contracting of equipment and staff for data collection, processing and interpretation of data.

GBG Australia is an independent provider of non destructive and shallow geophysical investigation services with applications ranging from the location of a single pre-stressing strand in a

concrete slab to mine scale exploration geophysics. With clients ranging from Local to Federal Government, and from developers and engineering companies to private individuals, we can provide tailored solutions to your particular subsurface investigation requirements.

GEM SYSTEMS INC. Booth 112

135 Spy Court
 Markham, ON, Canada L3R 5H6
 Tel: +1 905 752 2202
 Fax: +1 905 752 2205
 Email: info@gemsys.ca
 Website: www.gemsys.ca
 Contacts: Francisco Lopez, Marketing Manager

GEM Systems manufactures ground and airborne magnetometers for geophysical exploration. Since 1980, oil and mining professionals have been getting great exploration results with GEM magnetometers. Whether your interest is discovering oil, diamonds, gold, silver, or base metals, GEM will help you illuminate structure, lithology, and prospective targets.

Highest sensitivity:

- Overhauser (0.022nT), Potassium (0.0007nT) and Proton (0.05nT)
- Integrated GPS (0.6m resolution) with navigation

GEM is introducing the New Declination, Inclination Magnetometer for Directional Drilling GSM-19DD and NEW GSMP-35 v8.0 Potassium Magnetometer.

GEM supplies systems that help to find gold in Mongolia, diamonds in Canada, oil in Argentina and more.

GEOKINETICS Booths 103 & 104

Suite 800, 1500 City West Blvd
 Houston, Texas, 77042 USA
 Tel: +1 281 848 6831
 Fax: +1 281 398 9996
 Email: louise.cooper@geokinetics.com
 Website: www.geokinetics.com

Geokinetics is a leading geophysical service company offering a broad range of specialized geophysical services to the petroleum and mining industries, worldwide. Services include, land, shallow water OBC (ocean bottom cable) and TZ (transition zone) seismic data acquisition and advanced processing and interpretation services. The company offers 2D, 3D, 3C and 4C seismic survey design, conventional and multi-component acquisition, leasing/permitting, survey and site preparation, dynamite, Vibroseis, airgun and low impact impulsive sources. Geokinetics has comprehensive global resources with in-depth expertise and experience operating in the US, Canada, Latin America, Europe, Africa, Middle East, Eastern Hemisphere and Asia Pacific regions.

GEOLOGICAL SURVEY OF NAMIBIA Booth 100

Private Bag 13297
 1 Aviation Road
 Windhoek, Namibia
 Tel: +264 61 284 8111
 Fax: +264 61 249144
 Email: dhutchins@mme.gov.na
 Website: www.mme.gov.na

The Geological Survey of Namibia, one of five directorates within the Ministry of Mines and Energy, is the national institution for earth science and geological resources. It aims to enhance knowledge and awareness of Namibia's geological resources and through scientific research assist in the development of mineral resources. In this regard Airborne Geophysics is making a major contribution with virtually complete national coverage of magnetic and radiometrics in excess of 4.4 million line kms. Airborne EM, hyperspectral and gravity surveys are also contributing significantly towards mineral exploration.

GEOLOGICAL SURVEY OF NEW SOUTH WALES

Booth 62

Department of Industry and Investment – Primary Industries and Energy
Tel: +61 2 4931 6666
Fax: +61 2 4931 6726
Email: geoscience.products@industry.nsw.gov.au
Website: www.dpi.nsw.gov.au/minerals/geological
Contact: David Robson

The Geological Survey of New South Wales develops the necessary geoscientific information framework to encourage mineral exploration and support land use assessment and natural resource management. Through the New Frontiers initiative, statewide grids and images of geophysical data are available as a set of four DVDs at \$110 per set. It includes 50m and 250m grids of airborne magnetic data, 100m grids of airborne radioelement data, a 500m grid of gravity data and a 80m grid of the SRTM DEM data totalling 15.1 Gb. Overview images as geo-rectified ECW, JPG and TIFF files are also included. The Geological Survey is currently undertaking a fixed-wing airborne geophysical survey over the southeast of New South Wales. The survey covers 24000 square kilometres and includes the Eden, Bombala, Delegate, Cooma, Adaminaby, and Brindabella regions.

New products:

- Statewide geophysical data on 4xDVD set
- 'NEW' image and gridded data sets of geophysical data for each 1 : 250000 scale sheets in New South Wales
- Thomson Orogen DVD – Update of work-in-progress that includes revised interpretation, improved depth-to-bedrock model, new age dating and updated imagery
- Murray Basin Geophysical Investigations – report on airborne and ground geophysical data

GEOLOGICAL SURVEY OF QUEENSLAND

Booth 56

Department of Employment, Economic Development and Innovation
Block A, 80 Meiers Road
Indooroopilly, QLD 4068, Australia
Geological Information
Hotline: +61 7 3006 4666
Fax: +61 7 3362 9368
Email: geological_info@dme.qld.gov.au
Website: www.dme.qld.gov.au/home.cfm
Contact: Bernie Stockill
Mob: 0409 833650

The Geological Survey of Queensland provides free pre-competitive regional geophysical data to the Mining and Exploration industries to help stimulate exploration investment

and promote regional development throughout Queensland. Building on to the successes achieved through the \$49 million *Smart Exploration and Smart Mining – Future Prosperity* programs, the Queensland Government has committed a further \$18 million over the next four years to continue supporting mineral and energy exploration. The new initiative, *Greenfields 2020* will deliver new geophysical data and provide regional geological interpretation that includes 3D models and resource assessments to assist industry and encourage exploration in under-explored terrains.

GEOLOGICAL SURVEY OF WESTERN AUSTRALIA

Booth 84

Department of Mines and Petroleum
Mineral House
100 Plain Street
East Perth, WA 6004, Australia
Tel: +61 8 9222 3333
Fax: +61 8 9222 3444
Email: geological.survey@dmp.wa.gov.au
Website: www.dmp.wa.gov.au/gswa
Contacts: David Howard, John Brett, Tom Lenane

The Western Australian Department of Mines & Petroleum (DMP) facilitates the State's economic development by delivering services and solutions to enhance Western Australia's business environment. The importance of the resources sector to the Western Australian economy means that a major function of the Department is to promote the sector and administer the legislation regulating the development of the mineral and petroleum industries. Within DMP, the Geological Survey of Western Australia (GSWA) gathers, synthesises, and publishes information on the State's geology, and mineral and petroleum resources, producing a huge volume of books, maps and state-of-the-art databases for the benefit of the Western Australian community including prospectors, explorers, miners, and investors.

GEOMOLE PTY LTD

Booth 31

Australian Technology Park
International Business Centre
Suite 108, 2 Cornwallis Street
Eveleigh, NSW 2015, Australia
Tel: +61 2 9209 4191
Fax: +61 2 9209 4192
Emails: tsindle@geomole.com, lynsey@geomole.com, info@geomole.com
Website: www.geomole.com
Contacts: Vesna Glisic, Lynsey Brett, Tim Sindle
Mob: 0438 443541

GeoMole provides high detailed continuous ore body and structural delineation information for mining and exploration using borehole radar technologies. Borehole radar is an electromagnetic subsurface imaging technique which is currently being used worldwide to reduce geological loss, find additional ore lenses and more accurately calculate resources. GeoMole are involved in the full range of borehole radar services including:

- BHR research and development
- BHR tool manufacturing
- BHR data processing and interpretation software development – SeisWin

- BHR deployment, processing and interpretation training
- Complete BHR solutions from problem description through to solution

GEOPHYSICAL RESOURCES AND SERVICES PTY LTD

Booth 34

PO Box 549
Sumner Park, QLD 4074, Australia
Tel: +61 7 3279 0111
Fax: +61 7 3279 0145
Email: tjritchie@consultgrs.com.au
Website: www.consultgrs.com.au
Contact: Terry Ritchie

International exploration and mining services.

GEOSCIENCE AUSTRALIA

Booths 54 & 55

GPO Box 378
Canberra, ACT 2601, Australia
Tel: +61 2 6249 9763
Fax: +61 2 6249 9965
Mob: 0 409 447 736
Email: ned.stolz@ga.gov.au
Website: www.ga.gov.au
Contact: Ned Stolz

Geoscience Australia is a prescribed Australian Government agency within the Department of Resources, Energy and Tourism.

Geoscience Australia provides geoscientific information and knowledge which enables government and community to make informed decisions about: resource exploration; environmental management; and natural hazard assessment. Onshore activities focus on enhancing mineral and energy exploration and environmental land-use planning. Offshore activities include providing pre-competitive data to help identify prospective basins for petroleum exploration and storage of carbon dioxide. Spatial information programs provide key spatial data about Australia with an emphasis on detection of change, natural risk assessment, emergency management, and marine zone stewardship.

GEOSCIENCE VICTORIA

Booth 24

GPO Box 4440
Melbourne, VIC 3001, Australia
Tel: +61 3 9658 4532
Fax: +61 3 9658 4555
Mob: 0437 090 381
Email: damia.ettakadoumi@dpi.vic.gov.au
Website: www.dpi.vic.gov.au/earth-resources
Contact: Paul McDonald, Acting Director, GeoScience Victoria

Victoria's Department of Primary Industries facilitates, promotes and regulates the state's mineral, oil, gas, geothermal energy and extractive exploration and mining. GeoScience Victoria (GSV) – a branch of DPI – provides the exploration industry and government with expert regional-scale geoscientific data and knowledge. GSV works with academic and commercial collaborative partners to produce high-quality products such as geological maps, scientific reports, results of prospectivity studies, GIS data packages and 3D models.

GEOSENSOR/SCINTREX LTD

Booth 92

222 Snidercroft Road
Concord, ON L4K2K1, Canada
Tel: +1 905 669 2280 ext 254, Richard Lachapelle – Canada
Tel: +61 0407608231, Matt Edmonds – Australia
Emails: rlachapelle@scintrexltd.com, matt@geosensor.com.au, scintrex@scintrexltd.com
Website: www.scintrexltd.com
Contact: Matt Edmonds

Scintrex is a world leader in geophysical instrumentation, providing sales and services for ground, borehole, marine and airborne gravity applications. Scintrex products are used in mineral, petroleum, groundwater, environmental, academic and scientific applications.

GEOSOFT AUSTRALIA

Booths 75 & 77

14/100 Railway Road
Subiaco, WA 6008, Australia
Tel: +61 8 9382 1900
Fax: +61 8 9382 1911
Email: info.au@geosoft.com
Website: www.geosoft.com
Contact: Andrew Speirs

Empowering your earth exploration is shaped by people, technology and innovation combined with personal experience. Geosoft harnesses all of these to build software solutions and services that accelerate knowledge development for successful earth exploration. With solutions designed to meet the unique needs of the mineral and energy exploration industries, we enable simple and natural access to data; efficient and collaborative knowledge development; and sharing with others.

GEOTECH AIRBORNE PTY LTD

Booths 87 & 88

Unit 1, 29 Mulgool Road
Malaga, WA 6090, Australia
Tel: +61 8 9249 8814
Fax: +61 8 9249 8894
Email: andrew.carpenter@geotechairborne.com.au
Website: www.geotechairborne.com.au

Geotech offers full-service airborne geophysical surveys worldwide, mainly to clients in the mining and mineral exploration industries. Our proprietary, large dipole-moment, VTEM (Versatile Time-Domain Electro Magnetics) system is the cornerstone of our business. Due to the unparalleled success of VTEM, 2010 has been Geotech's most productive year yet, with surveys spanning five continents. Geotech also offers Gravity, Magnetics, Gradient Magnetometer and Radiometrics. Geotech's AirMt (Airborne Magneto-tipper) is a new and innovative system that combines some of the best features of ZTEM, which has already proven to be an extremely valuable exploration tool.

GEOVISTA LTD

Booth 14

Unit 10, Cae Ffwrt Business Park
Glan Conwy, LL28 5SP, UK
Tel: +44 1492 573399
Fax: +44 1492 581177
Email: geovista@geovista.co.uk
Website: www.geovista.co.uk

Geovista geophysical logging and imaging tools serve geoscientists worldwide, with best in class performance. We supply a range of dependable systems to cover most borehole data requirements for exploration, exploitation, site investigation, and groundwater. We manufacture and supply compact loggers, sturdy winches with a full set of safety features, an extensive range of stackable sondes, televiwers, as well as borehole video inspection cameras. Sonde stacking capability allows for efficient logging operations. It also allows for useful sensor combinations that would otherwise not be possible. Both the cameras and the logging sondes can be run on the same wireline.

GPX SURVEYS

Booth 63

4 Hehir Street
Belmont, WA 6104, Australia
Tel: +61 8 9477 5111
Fax: +61 8 9477 5211
Email: info@gpxsurveys.com.au
Website: www.gpxsurveys.com.au
Contact: Katherine McKenna

GPX Surveys is an internationally recognised Australian service company specialising in the collection, processing and interpretation of airborne and ground geophysical data. GPX Surveys offers a suite of airborne systems, both fixed wing and helicopter collecting magnetics, radiometrics, electromagnetics, altimetry, and gravity. To complement this GPX Surveys also provides ground geophysical systems specialising in the collection of induced polarisation, resistivity, surface and borehole electromagnetics, radiometrics, magnetics, and gravity. Our management, operations and data processing team have accumulated years of experience and have operated for companies and government agencies in many countries throughout Australia, South East Asia, Micronesia, India, Africa, Middle East, Europe and the Americas.

GROUNDPROBE GEOPHYSICS

Booth 115

1/288 Victoria Road
Malaga, WA 6090, Australia
Tel: +61 8 9378 8000
Fax: +61 8 9378 8001
Email: tristan.campbell@groundprobe.com
Website: www.groundprobe.com
Contact: Tristan Campbell

GroundProbe Geophysics is a premium provider of land, marine and airborne geophysical services. With capabilities from high-level consulting, data acquisition through to delivery of complete solution packages, areas of expertise include:

- Locating and characterizing mining resources
- Characterizing rockmass integrity for geotechnical applications
- Defining and mapping cavities and old mines
- Monitoring integrity of infrastructure
- Hydrogeological surveying

GROUNDWATER IMAGING PTY LTD

Booth 13

279 Fitzroy St
Dubbo, NSW 2830, Australia
Tel: +61 2 6882 7465
Mob: 0418 964 097
Email: David@GroundwaterImaging.com
Website: www.GroundwaterImaging.com
Contact: Dr David Allen

Groundwater Imaging specializes in towed mobile platform imaging for both geological and groundwater imaging. We operate large 4WD towed TerraTEM systems capable of imaging as much as 100m deep and rivaling airborne systems. Suitable for use on open farmland, rangeland and water bodies, these systems can be mobilized at low cost for small jobs. We operate geo-electric equipment for resolving geology controlling canal and reservoir seepage, river/aquifer connectivity and saline inflow into rivers and drains. We publish our 3D images along with bore graphics in Google Earth. We also conduct moisture migration, magnetic and Gamma ray spectrometer surveys.

HALLIBURTON, LANDMARK SOFTWARE AND SERVICES

Booths 27 & 28

Level 2, 256 St Georges Terrace
Perth, WA 6000, Australia
Tel: +61 8 6424 4600
Fax: +61 8 6424 4699
Email: anita.boulazeris@halliburton.com
Website: www.halliburton.com/landmark
Contact: Anita Boulazeris

Landmark is a key provider of software and technology services for the upstream oil and gas industry. Our software solutions, built for the DecisionSpace® environment, help improve insight from data in ways never possible before, across the entire exploration and production lifecycle. Landmark's technology deployment and hosting services, petrotechnical computing portfolio, software training, and certified customer support are globally available to help our customers realize the maximum return on their technology investments.

Halliburton, founded in 1919, is one of the world's largest providers of products and services to the energy industry. With nearly 55 000 employees in approximately 70 countries, the company serves the upstream oil and gas industry throughout the life cycle of the reservoir – from locating hydrocarbons and managing geological data, to drilling and formation evaluation, well construction and completion, and optimizing production through the life of the field.

IKON SCIENCE AND GEOPRESSURE TECHNOLOGY

Booths 15–17

45 Ventnor Avenue
West Perth, WA 6005, Australia
Tel: +61 8 9429 8874
Fax: +61 8 9429 8800
Email: info@ikonscience.com
Websites: www.ikonscience.com, www.geopressure.co.uk
Contact: Henry Morris

Ikon Science and our subsidiary GeoPressure Technology are committed to bring geoscience technology to the upstream oil and gas industry. As specialists in subsurface workflows, we are developing and delivering quantitative prediction and reservoir characterisation to our customers with a fresh and flexible approach. With our industry-leading software, The RokDoc® System, and our responsive teams, we are dedicated to providing you with excellence, by combining innovation and scientific rigour on every project. Leading a journey to discover and share new technology, products and know-how, we deliver results and value on time, every time.

INSTRUMENTATION GDD INC.

Booth 12

860 boul. de la Chaudière, Suite 200
 Québec (Québec), Canada G1X 4B7
 Tel: +1 418 877 4249
 Fax: +1 418 877 4054
 Email: gdd@gdd.ca
 Website: www.gdd.ca
 Contact: Pierre Gaucher

Instrumentation GDD Inc. is a world leader in high-tech geophysical and electronic instrumentation for mining exploration geophysics and environmental levelling surveys. Since 1976, it has developed, manufactured and sold a wide range of electromagnetic (EM), levelling and induced polarization geophysical instruments. GDD's team of researchers, engineering design personnel and technicians is always committed to solving problems related to mining exploration, and the satisfaction of their clients is first in their priority list. GDD is renowned for its customer service and its very rugged and reliable instrumentation. GDD is now considered as a world leader in terms of state-of-the-art geophysical instrumentation.

INTERMAP TECHNOLOGIES

Booth 94

Email: info@intermap.com
 Website: www.intermap.com

INTREPID GEOPHYSICS

Booth 66

2/1 Male Street
 Brighton, VIC 3186, Australia
 Tel: +61 3 9593 1077
 Fax: +61 3 9592 4142
 Email: info@intrepid-geophysics.com
 Website: www.intrepid-geophysics.com
 Contact: Maggie Snow (maggie@intrepid-geophysics.com)

Desmond FitzGerald & Associates Pty Ltd (trading as Intrepid Geophysics since 2001) has operated for over thirty years. Since 1992, the company has developed software and services for potential field geophysics. The primary software developed is *Intrepid*, *GeoModeller* and *Jetstream*. Since 2002, 3D geological modelling and integration with Geophysics has played an important role in the company. This is an industry/government partnership with the company having close links to BRGM (France) and Geoscience Australia. Our associated company, GeoIntrepid, provides processing and interpretation services including a special ability to solve high end, very large data volumes and difficult issues. Substantial quality control and airborne processing expertise exists. We have offices in Melbourne and Namibia.

IRIS INSTRUMENTS

Booth 110

1 Avenue Buffon
 BP 16007- 45060 Orleans Cedex2, France
 Tel: +33 238 63 81 00
 Fax: +33 238 63 81 82
 Email: iris@iris-instruments.com
 Website: www.iris-instruments.com
 Contact: Jean Bernard

IRIS Instruments, a BRGM and OYO group joint venture, designs, manufactures and markets worldwide geophysical

instruments for environmental, groundwater, geotechnical and mining applications:

- Resistivity meters for 1D resistivity sounding and 2D-3D imaging (SYSCAL, SYSCAL Pro types)
- Induced Polarisation systems for shallow and deep mining exploration (VIP transmitters and ELREC receivers types)
- Magnetic Resonance Sounding (MRS) system for groundwater investigation (NUMIS type)
- Electro Magnetic equipment (PROMIS multi-frequency and multi-spacing system, VLF system) for lateral variation of resistivity surveys in mining and groundwater exploration

MIRA GEOSCIENCE

Booth 107

Level 1, 1 Swann Rd
 Taringa, QLD 4068, Australia
 Tel: +61 7 3377 6789
 Fax: +61 7 3377 6701
 Email: info@mirageoscience.com
 Website: www.mirageoscience.com
 Contact: Tim Chalke

Mira Geoscience offer software and consulting services in 3D earth modelling to the global mining industry for mineral exploration, resource assessment, mine planning, geotechnical hazard and environmental monitoring. Our work is focused on applications of the Gocad 3D-GIS software which offers the most advanced technology available today for 3D surface and volume modelling, visualisation, geophysical forward modelling and inversion, and multi-disciplinary decision support. Mira Geoscience provides software sales, support, and training, the development and sale of Gocad modular plug-ins for mining applications, as well as earth modelling and exploration targeting consulting services. Our Advanced Geophysical Interpretation Centre (AGIC) provides industry-leading modelling, inversion, and interpretation services across the range of geophysical methods.

OUTER-RIM EXPLORATION SERVICES PTY LTD Booth 96

42 Vivian Street
 Boulder, WA 6432, Australia
 Tel: +61 8 9093 4400
 Mob: 0428 300 134
 Fax: +61 8 9093 4411
 3 Katherine Street
 Norman Park, QLD 4170, Australia
 Tel: +61 7 3843 2922
 Fax: +61 7 3843 2966
 Mob: 0412 549 980
 Email: mail@outer-rim.com.au
 Website: www.outer-rim.com.au
 Contacts: John More, David Lemcke

Outer-Rim Exploration Services has been providing reliable, professional, cost effective surface, underground and downhole EM surveys to the exploration and mining industry throughout Australia for more than fifteen years. ORE was the first to provide dependable three component DHEM surveys to Australia and the first to provide the new SQUID technology (using high temperature superconductors) to surface EM surveys, with the introduction of the CSIRO developed LANDTEM system. The LANDTEM now has an enviable record of exploration success in a relatively short time. For excellence in EM surveys, contact one of the ORE team.

**PESA – PETROLEUM EXPLORATION
SOCIETY OF AUSTRALIA****Booth 36**Website: www.pesa.com.au

PESA is a non-profit association of individuals involved in the exploration of oil and gas. The purpose and objectives of PESA are:

- To promote professional and technical aspects of the upstream petroleum industry throughout Australia by providing a medium for gathering individuals interested in oil and gas exploration;
- To present views and discuss technical and professional matters relating to the upstream petroleum industry;
- To foster and provide continuing education for the benefit of members; and
- Maintain a high standard of professional conduct on the part of its members.

The Society has branches in all states. Technical meetings are held monthly as well as the occasional purely social function. With almost 2000 active members, the Society is the largest scientific society in the Upstream Oil and Gas Industry and indeed one of the largest scientific societies in Australia.

More information about the Society including membership registration is available on our website.

PETROLEUM GEO-SERVICES (PGS)**Booths 67–70**

Petroleum Geo-Services Asia Pacific Pte Ltd
Level 4, IBM Building
1060 Hay Street
West Perth, WA 6005, Australia
Tel: +61 8 9320 9000
Fax: +61 8 9320 9010
Email: Nick.David@pgs.com
Website: www.pgs.com
Contact: Mark Forsyth (Mark.Forsyth@pgs.com)

Petroleum Geo-Services (PGS) is a leading, worldwide geophysical company providing an extensive range of seismic services and products for the petroleum industry including seismic data acquisition, processing, reservoir analysis, interpretation and electromagnetic studies. The company also possesses the world's most extensive MultiClient data library. With its headquarters in Oslo, Norway, the company has over 40 offices worldwide in 25 different countries with larger regional offices in London, Houston and Singapore. The company is listed on the Oslo stock exchange (OSE: PGS).

PETROSYS PTY LTD**Booths 83 & 85**

Level 4 North, 191 Pulteney Street
Adelaide, SA 5000, Australia
Tel: +61 8 8227 2799
Fax: +61 8 8227 2626
Email: info@petrosys.com.au
Website: www.petrosys.com.au

Petrosys software provides the best combination of quality output, comprehensive mapping, 3D visualization, gridding and volumetrics calculations for integrating data from the wide range of systems involved in petroleum exploration. Fitting Petrosys to your existing environment will improve the ability of your team

to share and distribute information by being able to produce better maps more directly and in less time. So if the idea of suddenly enjoying greater productivity and greater success appeals to you, stop making ordinary maps. Unearth a masterpiece with Petrosys. Petrosys software is available on Windows and Linux and allows you direct access to a wide array of data sources, such as OpenWorks, GeoFrame, SMT, Petrel, PPDM, Petra and ArcSDE.

PIRSA**Booths 73 & 74**

Minerals and Energy Resources
Level 7, 101 Grenfell Street
Adelaide, SA 5000, Australia
Tel: +61 8 8463 3000
Fax: +61 8 8463 4155
Email: Tania.dhu@sa.gov.au
Website: www.pir.sa.gov.au
Contacts: Tania Dhu, Project Geophysicist

PIRSA's Minerals and Energy Resources Division facilitates mineral, petroleum and geothermal exploration and development within the State of South Australia. The Division provides a wide range of services including the gathering and value-adding of geoscientific datasets for delivery to the exploration industry and wider public. Many databases, including geophysical data, can be accessed and downloaded via the South Australian Resources Information Geoserver – or SARIG (<https://sarig.pir.sa.gov.au/sarig/frameSet.jsp>).

The Division also plays a role within the community through education and ensuring the responsible development of South Australia's mineral, petroleum and geothermal resources. It is responsible for industry regulation, legislation development and review, policy development and provision of advice.

PITNEY BOWES BUSINESS INSIGHT**Booths 58 & 59**

Level 7, 1 Elizabeth Plaza
North Sydney, NSW 2060, Australia
Tel: +61 2 9437 6255
Fax: +61 2 9439 1773
Email: pbbi.australia@pb.com
Website: www.pbinsight.com.au
Contact: Caroline Hladilo, caroline.hladilo@pb.com

Pitney Bowes Business Insight brings together award-winning location intelligence software, specialist geospatial data and service solutions and renowned data integration capabilities to profoundly change the way businesses manage and evaluate their geospatial and technical data. Our expertise in the geosciences industry delivered by our natural resources group provides award-winning Encom software solutions to help with every aspect of the natural resources industry.

POLARCUS**Booths 1 & 2**

Almas Tower, Level 32, Jumeirah Lakes Towers
PO Box 283373
Dubai, United Arab Emirates
Tel: + 971 4 4360 800
Fax: +971 4 4360 808
Email: info@polarcus.com
Website: www.polarcus.com
Contact: Christian Fenwick – SVP Business Development and MC

Polarcus is a pure play marine geophysical company with a pioneering environmental agenda, specializing in high-end towed streamer data acquisition from Pole to Pole. Polarcus is launching a fleet of modern 3D seismic vessels using the innovative ULSTEIN X-BOW® design and incorporating advanced maritime technologies for improved operational efficiency with a reduced environmental footprint. Polarcus offers contract seismic surveys and multi client projects worldwide and has its principal office in Dubai, United Arab Emirates. For more information, visit www.polarcus.com

QUANTEC GEOSCIENCE PTY LTD

Booth 79

2/77 Araluen Street
Kedron, QLD 4031, Australia
Postal address: PO Box 276, Ashgrove, QLD 4060, Australia
Tel: +61 7 3359 0444
Fax: +61 7 3359 0011
Email: tretallick@quantecgeoscience.com
Website: www.quantecgeoscience.com
Contact: Trent Retallick
Mob: 0410 529992

Quantec Geoscience delivers high-quality data acquisition, processing, interpretation and other geophysical services to the mining, geothermal, and oil and gas exploration industries. With more than 2500 surveys completed globally since 1986, Quantec clients benefit from leading and proven technologies that address many earth science challenges – from grassroots and near mine mineral exploration to deep imaging of geothermal host rocks to exploring under volcanic cover or salt for oil and gas. Quantec also provides survey solutions for coal based methane (CBM) and other specialized work.

RADIATION SOLUTIONS

Booth 4

386 Watline Avenue
Mississauga, ON L4Z1X2, Canada
Tel: +1 905 890 1111
Fax: +1 905 890 1964
Email: info@radiationsolutions.ca
Website: www.radiationsolutions.ca
Contact: Ron Martin

Radiation Solutions Inc is a manufacturer of low level radiation detection instruments for geophysical exploration, agriculture, environmental and industrial applications. Instruments for geophysical applications are designed for precise measurement as well as to meet rugged environments. Products include the widely used model RS-500 airborne gamma ray spectrometer, the RS-700 land vehicle spectrometer and the models RS-120, 125 and the RS-230 handheld field scintillometers and spectrometers. A selection of mobile and handheld units will be on display.

ROBERTSON GEOLOGGING ASIA

Booth 93

24A Conduit Tower
20 Conduit Road
Mid-Levels
Hong Kong
Tel: +852 2548 9081
Fax: +852 2548 9082
Email: rgasiasteve@netvigator.com
Website: www.geologging.com
Contact: Steve Parry

Now, as probably the major supplier of slim-hole borehole logging equipment in the world, our success remains based on technological leadership and global customer support. Our extensive product range includes the latest Micrologger-II portable digital log acquisition unit, various winches ranging from 150m to 3000m capacity, and nearly 50 digital combination probes for geotechnical, water, mineral and oil/gas applications. We will be show-casing our new Slim Oilfield combination open-hole logging suite which is designed for oil/gas and CBM methane operations up to 14 000 ft. Maximum working temperature is 125°C and maximum pressure is 12 500 psi with a maximum probe diameter of 2.5" (63 mm).

RPS

Booth 111

38 Station St
Subiaco, WA 6008, Australia
Tel: +61 8 9211 1111
Fax: +61 8 9211 1122
Email: john.stanton@rpsgroup.com.au
Website: www.rpsgroup.com.au
Contact: Martin Holbrook (+61 8 9387 7955, Martin.holbrook@rpsmetocean.com)

RPS is an international consultancy offering comprehensive and independent technical support to clients in Australia, New Zealand, SE Asia and other international regions. Whether the requirement is for a complete outsourced project solution, a full multidiscipline team or simply to supply a specialist individual consultant, RPS is the solution. RPS offers services in the areas of Technical Geoscience and Petroleum Engineering, Safety and Risk Assessment, HSE Training, Environmental Planning, Approvals and Advice, Marine Ecology and MMOs, Seismic and Drilling Bridging Documents, Seismic Operations and Process Control, Physical Oceanography and Measurement Programs, Numerical Modelling, Real-Time Systems and Desktop Studies.

SANDER GEOPHYSICS

Booth 23

260 Hunt Club Road
Ottawa, ON K1V 1C1, Canada
Phone: +1 613 521 9626
Fax: +1 613 521 0215
Email: surveys@sgl.com
Website: www.sgl.com
Contact: Adrian Archer (aarcher@sgl.com)

Sander Geophysics Ltd (SGL) provides worldwide airborne geophysical surveys for petroleum and mineral exploration, and geological and environmental mapping. Founded in 1956, SGL's services include high resolution airborne gravity, magnetic, electromagnetic, and radiometric surveys, using fixed-wing aircraft and helicopters. Sander Geophysics offers gravity surveys with AIRGrav, which was designed specifically for the unique characteristics of the airborne environment and is the highest resolution gravimeter available. Sander Geophysics also offers a full range of data enhancement programs and integrated interpretation services by experienced geoscientists.

SEISMIC ASIA PACIFIC PTY LTD**Booth 116**

556 Tarragindi Road
Salisbury, QLD 4107, Australia
Tel: +61 7 3719 3400
Fax: +61 7 3216 7665
Email: sales@seismic.com.au
Websites: www.seismic.com.au, www.mitchamindustries.com
Contact: Jack Prakash

Established in 1959, Seismic Asia Pacific Pty Ltd (www.seismic.com.au), is a leading provider of Hydrographic, Oceanographic, Geophysical, Exploration and Navigation Systems within Australia and throughout South East Asia. With its Corporate Office located in Salisbury, Queensland, Australia, Seismic Asia Pacific provides both hardware and software equipment and system solutions to local government, defence and resource related sectors. Seismic Asia Pacific has a distribution, sales, engineering, workshop, support, repair and maintenance office located in Brisbane, Queensland, Australia with other offices/branches in Beijing, Singapore and Jakarta with teaming partners in Bangkok, Kuala Lumpur, Suva, Hanoi and Manila.

Seismic Asia Pacific is a subsidiary of Mitcham Industries, Inc. (www.mitchamindustries.com), a geophysical equipment supplier, offering for lease or sale, new and "experienced" seismic equipment to the oil and gas industry, seismic contractors, environmental agencies, governmental agencies and universities. Headquartered in Texas, with strategically located global operations in Huntsville, Texas, Canada, Australia, United Kingdom, Russia, Singapore, Colombia and Peru. Mitcham conducts operations on a global scale, offering a diverse array of technologically advanced geophysical equipment for short-term lease or sale-on-demand and is the largest independent exploration lessor in the industry.

SEISMIC MICRO-TECHNOLOGY INC.**Booth 61**

79 Robinson Road
#25-01 CPF Building
Singapore 068897
Tel: +65 6220 1089
Fax: +65 6220 1081
Email: rw@seismicmicro.com
Website: www.seismicmicro.com
Contact: Eileen Tan

Since 1984, Seismic Micro-Technology, Inc. (SMT) has offered geoscience software technology to the upstream E&P industry. SMT is committed to providing software with broad functionality that is easy to learn and use, is truly integrated, and is flexible in its operation. SMT was the first company to develop geoscience interpretation tools for Windows and continues to lead the industry in PC-based exploration and reservoir management software. SMT's success is based upon total software integration and complete portability. The entire KINGDOM of SMT geoscience interpretation tools functions off of one single executable and can work anywhere the user is. With the click of just one application the interpreter can instantly operate each of SMT's geoscience modules.

SKYTEM APS**Booth 86**

Tofteledet 18
DK-8330 Beder, Denmark
Tel: +45 8620 2050
Email: info@skytem.com
Website: www.skytem.com
Contact: Lene Kirkegaard, lk@skytem.com

SkyTEM ApS provides commercial airborne geophysical surveys worldwide with focus on clients' demands, high accuracy, safety and environmental issues. SkyTEM ApS offers helicopter-borne time-domain electromagnetic and magnetic surveys. A majority of the surveys are flown using the SkyTEM method. By use of this technique lateral as well as horizontal variations in the resistivity of the geology are mapped with very high accuracy. The results are of great benefit for geologists when it comes to mapping groundwater aquifers, vulnerability of water resources, geology related to petroleum and mineral targets as well as assessing geotechnical concerns such as landslides.

TERREX SEISMIC**Booth 53**

2/37 Howson Way
Bibra Lake, WA 6163, Australia
Tel: +61 8 9434 4388
Fax: +61 8 9434 5211
Email: steve@terrexseismic.com
Website: www.terrexseismic.com
Contact: Stephen Tobin
Mob: 0418 909294

Terrex Seismic is Australia's premier onshore seismic acquisition company providing seismic services for:

- Oil and Gas exploration and development,
- Coal Seam Gas (CSG) exploration and development,
- High resolution underground Coal exploration and mine development,
- Research – Deep Crustal and Regional seismic studies,
- Minerals exploration and development,
- Underground Carbon Storage (Geosequestration),
- Groundwater Resource Development.

Terrex Seismic operates Sercel 428XL recording systems, Shothole and Vibroseis operations (up to 62 000 lb Peak Force) with two supporting offices, Perth and Brisbane. We have recorded more than 600 2D and 3D seismic programs since 1981 employing 250+ employees with a full HSE department.

TGS**Booth 118**

Level 5, 1100 Hay Street
West Perth, WA 6005, Australia
Tel: +61 8 9480 0000
Fax: +61 8 9321 5312
Email: info@tgsnopec.com
Website: www.tgsnopec.com

TGS provides multi-client geoscience data and services to E&P companies around the globe. The company's geophysical and geological data products include multi-client seismic libraries, extensive magnetic and gravity data, the industry's largest global database of digital well logs, and regional interpretive products. TGS also provides high-end depth imaging services to help resolve complex seismic imaging problems. Within Asia Pacific,

TGS maintains the largest multi-client seismic data libraries in Indonesia and Vietnam with new focus on expanding across the region. An exciting new project is currently underway in Australia's Browse Basin to develop a new regional geological model which integrates wells, seismic and biostratigraphic data into a detailed sequence stratigraphic interpretation and online facies map.

THOMSON AVIATION PTY LTD

Booth 3

Hanger 14, Griffith Airport
Griffith, NSW 2680, Australia
Postal address: PO Box 1845, Griffith, NSW 2680, Australia
Tel: +61 2 6964 9487
Fax: +61 2 6962 2992
Email: paul@thomsonaviation.com.au
Website: www.thomsonaviation.com.au
Contact: Paul Rogerson (0427 681 484)

Thomson Aviation Geophysical Survey can offer the highest resolution airborne magnetic, radiometric and digital terrain data available. Our advanced acquisition techniques, combined with the latest instruments and systems ensure the best value for money data sets in the industry. Thomson Aviation have over 18 years experience in low level operations and can offer fixed wing and helicopter systems for both domestic and international projects. All data is processed by Thomson Aviation at our data processing house. Our processing facility utilises both Intrepid and Geosoft software for data Quality Control and final processing. Please come and have a chat.

ULTRAMAG GEOPHYSICS

Booth 95

21 Cowmeadow Rd
Mt Hutton, NSW 2290, Australia
Tel: +61 2 4948 8100
Fax: +61 2 4948 8477
Email: phil@ultramag.com, michael@ultramag.com
Website: www.ultramag.com
Contact: Michael McClelland (0429 916 601)

Ultramag Geophysics offers a range of customised geophysical techniques to help our clients map geological hazards during grass roots exploration, in open-cut mines and over underground mines.

We pioneered high resolution ground magnetic surveys in the coal industry in 1995 and have been adding new techniques thereafter. We are innovative and develop customised solutions for clients. With over 130 jobs for coal companies in the Hunter Valley, Bowen Basin and Indonesia since 1995, we draw on a wealth of practical experience. We believe our expertise in this area is unparalleled.

UTS-AEROQUEST

Booths 90 & 91

116 Fauntleroy Avenue
Perth Airport, WA 6105, Australia
Tel: +61 8 9479 4232
Fax: +61 8 9479 7361
Email: info@uts.com.au
Website: www.uts.com.au
Contact: Michael Lees (Sales Manager), michael_lees@uts.com.au

UTS-Aeroquest (UTS) forms part of the Aeroquest Group of Companies. Since 1992, UTS has been successful in the development of many new airborne geophysical techniques and have acquired and processed more than 9.0 million line kilometres of high resolution airborne geophysical data. UTS has an ongoing commitment to safety, innovation and system development, ensuring that the services provided to its clients will always be of the most technologically advanced, and acquired following strict safety guidelines. Survey capabilities currently include:

- Fixed wing & helicopter magnetics and radiometrics;
- Helicopter-borne TEM and FEM (AeroTEM & Impulse);
- Fixed wing gravity; and
- High quality data processing, presentation, and interpretation.

VELSEIS PTY LTD

Booths 81 & 82

83 Jijaws Street
Sumner Park, QLD 4074, Australia
Tel: +61 7 3376 5544
Fax: +61 7 3376 6939
Website: www.velseis.com.au
Email: enquiries@velseis.com.au
Contact: Rob Wiens, Commercial Manager

Velseis Pty Ltd is a highly experienced Australian seismic contractor, whose reputation is based upon 30 years of diverse operations throughout the Asia-Pacific region. Velseis offers fully integrated seismic services to the petroleum, coal and mineral industries.

The company's operations encompass seismic design, surveying, shot-hole drilling, data acquisition, processing and interpretation. The extensive experience of Velseis' key personnel ensures reliable and technically innovative solutions tailored to meet the needs of individual clients.

Velseis provides comprehensive seismic acquisition services, designed to accommodate geophysical, logistical, climatic, environmental and safety objectives. The company provides conventional 3D and 2D crews, utilising multi-component, heliportable, and shallow marine recording. In keeping with its full-service approach, Velseis provides a specialised shot-hole drilling service through its Seisdrill division and has recently purchased new Envirovibe units (light-weight Vibroseis buggies) which offer an alternative energy source for CSG and shallow petroleum targets. In addition, PT Velseis Indonesia provides comprehensive geophysical logging services in South East Asia.

Velseis is an industry leader in the processing of high-resolution seismic data, and is at the forefront of 3D seismic mine-planning imagery. Velseis also has an experienced oil and gas processing division, delivering high-quality 3D and 2D onshore, transition and marine seismic data processing services. Velseis maintains its competitiveness with a proactive commitment to research and development. The R&D division engages in focussed research projects and provides technical support to production divisions.

VORTEX GEOPHYSICS PTY LTD

Booth 89

8 Hart Street
Lesmurdie, WA 6076, Australia
Tel: +61 8 9291 7733
Fax: +61 8 9291 7737
Email: sales@vortexgeophysics.com.au
Website: www.vortexgeophysics.com.au
Contact: Allan Perry

Vortex Geophysics provide contract electrical geophysical services specialising in down hole surveys such as electromagnetic (DHMMR), magnetometric resistivity (DHMMR) and induced polarisation (DHIP). We also provide surface EM and MMR surveys and consulting services. Vortex Geophysics sets a high standard in safety, protection of the environment and data quality. We are based in Perth, Western Australia and provide services throughout Australia.

WESTERNGECO (SCHLUMBERGER)

Booths 76 & 78

AUSTRALIA PTY LTD

Level 5, 256 St Georges Terrace
Perth, WA 6000, Australia
Tel: +61 8 9420 4801
Fax: +61 8 9420 4600
Email: via website www.westerngeco.com/contact.aspx
Website: www.westerngeco.com
Contact: Ryan Taylor-Walshe, walshe1@slb.com
Mob: 0413 020853

WesternGeco, a business segment of Schlumberger, is the world's leading geophysical services company, providing comprehensive worldwide reservoir imaging, monitoring, and development services, with the most extensive geophysical survey crews and data processing centers in the industry, as well as the world's largest multiclient data library. Services range from 3D and 4D (time-lapse) seismic surveys to multicomponent and electromagnetic surveys, supplying our clients with accurate measurements of subsurface geology.

ZONGE ENGINEERING & RESEARCH

Booths 33 & 35

(AUST) PTY LTD ORGANIZATION

39 Raglan Avenue
Edwardstown, SA 5039, Australia
Tel: +61 8 8371 0020
Fax: +61 8 8371 0080
Email: zonge@zonge.com.au
Website: www.zonge.com.au
Contacts: Simon Mann, Kelly Keates

Zonge are specialists in conducting a broad range of electrical geophysical solutions for mining exploration, environmental and geotechnical applications. With over 25 years experience both in Australia and internationally, Zonge Australia offer expertise in electrical techniques, providing high quality data in a safe, professional and efficient manner. Geophysical Services include: geophysical consulting, survey design, data acquisition, data processing, forward and inversion modelling, geotechnical staff hire, field services, equipment sales, rental and repairs.

Survey methods:

- IP/resistivity including 3D, dipole-dipole, pole-dipole and other techniques in either time or frequency domains
- Surface EM including moving and fixed geometries
- High resolution surface EM (NanoTEM)
- Controlled and Natural source Magneto-Telluric techniques (CSAMT, AMT, MT)
- Down hole techniques including EM, IP/resistivity and MMR
- Ground Penetrating Radar (GPR)

All Your GEOPHYSICAL Needs

**Geophysical Instrumentation
Manufacturer & Distributor**

- Total Field Magnetics
- Time Domain Electro-magnetics
- Magnetic Susceptibility Meter
- Borehole Logging
- Radiometrics
- Seismic Refraction / Reflection
- Ground Penetrating Radar
- Resistivity Imaging
- Ground Conductivity Mapping
- Geophysical Interpretation Software

Rental Instrumentation

Equipment Repairs

Ground Geophysical Surveying
(large and small projects)

- Mineral Exploration
- Mine Development
- Environmental
- Civil Engineering
- Archaeological Surveys

Geophysical Consulting

- Data Interpretation
- Reporting







Phone: 02 9584 7500
E-mail: info@alpha-geo.com
Web: www.alpha-geo.com

Introducing the Air Tractor 502 'Data Boss'

- » Highest resolution radiometrics
- » 66 ltr crystal capacity
- » Fly lower and safer
- » Latest technology



HIGH QUALITY MAGNETIC & RADIOMETRIC SURVEY

FIXED WING & HELICOPTER PLATFORMS



Call Paul Rogerson
General Manager

P: (02) 6964 9487

M: 0427 681 484

paul@thomsonaviation.com.au
or visit thomsonaviation.com.au

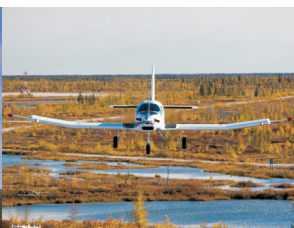
Thomson Aviation
Geophysical Survey



UTS AEROQUEST

it's all in the detail

HIGH RESOLUTION AIRBORNE GEOPHYSICS



MAGNETICS • RADIOMETRICS • GRAVITY • EM

operating around Australia and throughout the world

p: +61 8 9479 4232 **f:** +61 8 9479 7361 **e:** info@uts.com.au **w:** www.uts.com.au

