

Embryo-endometrial expression of leukemia inhibitory factor in the golden hamster (*Mesocricetus auratus*): increased expression during proestrous and window of implantation stages

Rajnish P. Rao^A, Bernd Fischer^B and Polani B. Seshagiri^{A,C}

^ADepartment of Molecular Reproduction, Development and Genetics, Indian Institute of Science, Bangalore, 560 012, India.

^BDepartment of Anatomy and Cell Biology, Martin Luther University, Faculty of Medicine, Halle (Saale), D-06097, Germany.

^CCorresponding author. Email: polani@mrdg.iisc.ernet.in

Accessory publication

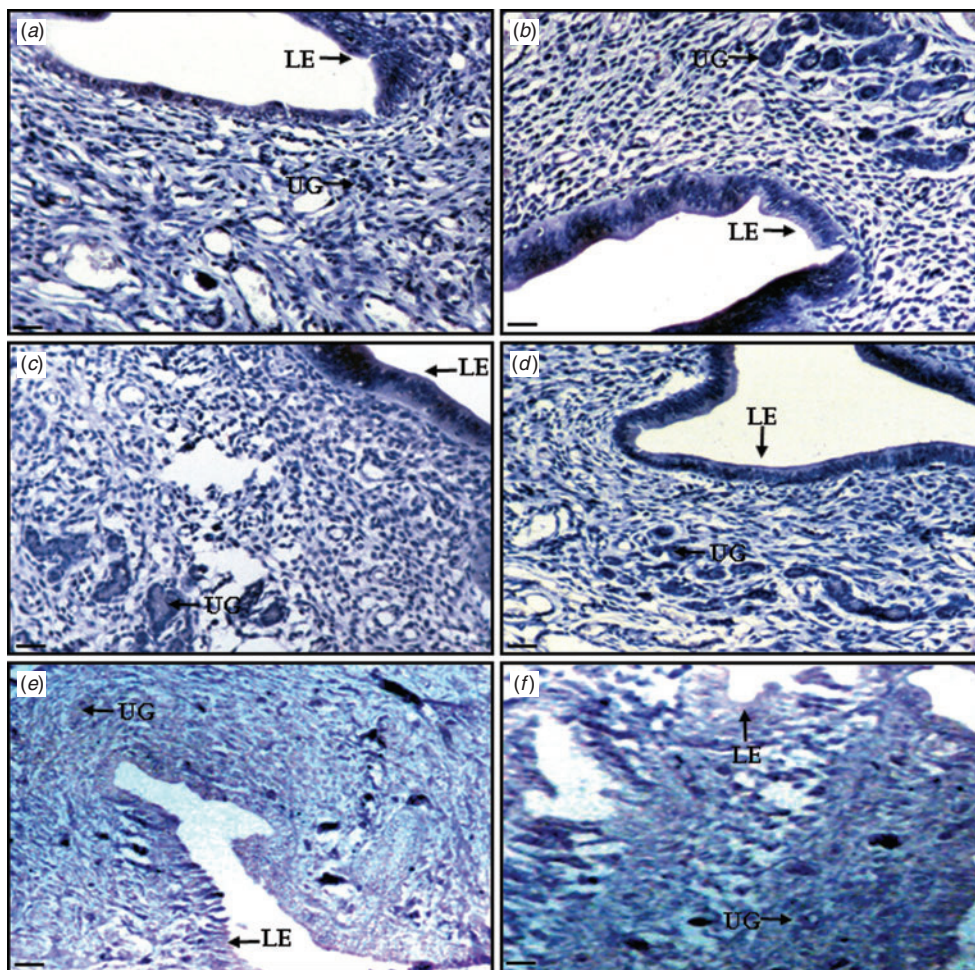


Fig. S1. Negative controls of hamster uterine LIF immunolocalization (shown in Fig. 4): days 2 (a), 3 (b), 3' (c) and 4 (d) of pregnancy and on diestrous (e) and proestrous (f) stages of the estrous cycle. Tissue sections were probed with non-immune IgG and anti-rabbit HRP-conjugated secondary antibody. Staining was performed with DAB and haematoxylin was used as a counterstain. Luminal epithelium (LE) and uterine glands (UG) are as indicated. Bar = 40 μ m.