

Accessory Publication

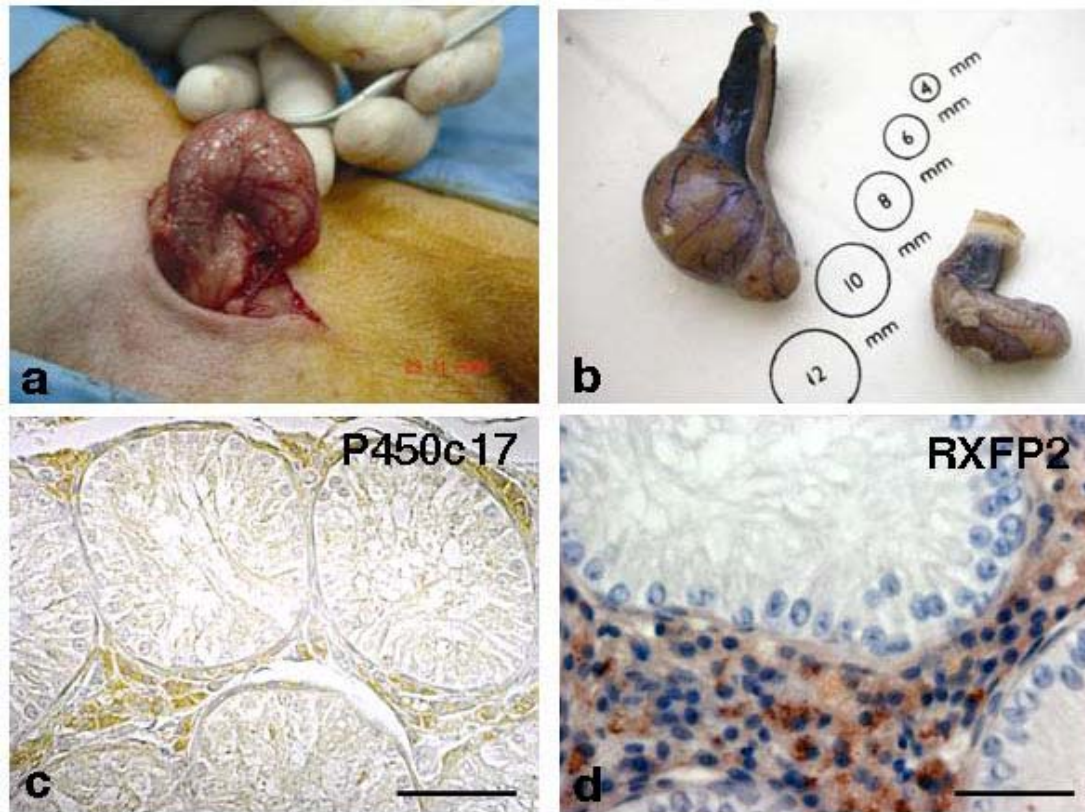


Fig. S1. Macroanatomical and immunohistochemical results relative to cryptorchid dogs. (a) Intraoperative aspect of a cryptorchid testicle. (b) The undescended testicle (right) is usually smaller than the descended, scrotal testicle (left). (c, d) In the seminiferous tubules of the cryptorchid testis, the spermatogenesis is absent. The Leydig cells show P450c17-immunoreactivity (c) and RXFP2-immunoreactivity (d), respectively. Scale bars = 50 μ m in (c), 20 μ m in (d).

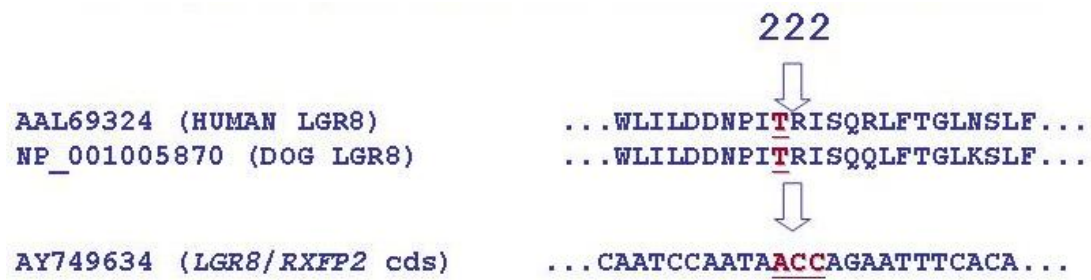


Fig. S2. Identification of canine amino acid and its coding triplet corresponding to human *LGR8* residue at position 222. Sironi *et al.* (2007) Analysis of RXFP2 (LGR8) as candidate gene for canine cryptorchidism. *Reprod. Domest. Anim.* **42**(Suppl. 2), 82.