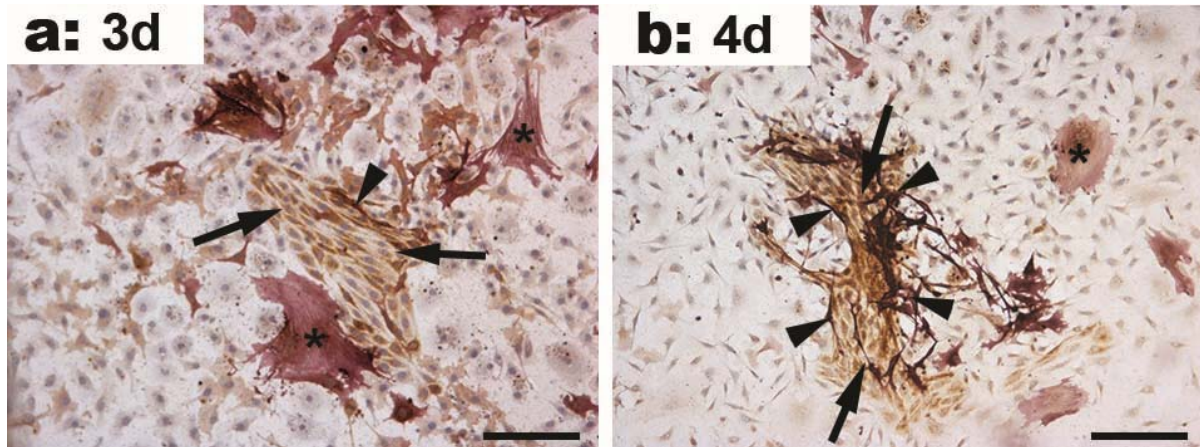


### Supplementary material



**Fig. S1.** The dual localisation of endothelial and mural cells in a CL-derived luteal angiogenesis culture system. On (a) day 3 and (b) day 4, cells were fixed and dual immunostained for von Willebrand factor (brown; endothelial cell marker) and smooth muscle actin (red; mural cell marker). Mural cells (singular flattened cells with cell projection; indicated by asterisk) were abundant across the whole well, but were frequently associated with endothelial cell (EC) islands (indicated by arrows). Often, the morphology of mural cells was different when they were aligned around or within an EC island. Namely, they had a contracted, elongated phenotype (arrowheads) and this was more noticeable as time progressed. The bars represent 200  $\mu\text{m}$ .