

Supplementary Material

Development of interspecies testicular germ-cell transplantation in flatfish

Tiziana Pacchiarini^A, Carmen Sarasquete^A and Elsa Cabrita^{A,B}

^AInstitute of Marine Science of Andalusia- ICMAN.CSIC, Av Republica Saharaui 2, 11510 Puerto Real, Cádiz, Spain.

^BCorresponding author. Email: elsa.cabrita@icman.csic.es

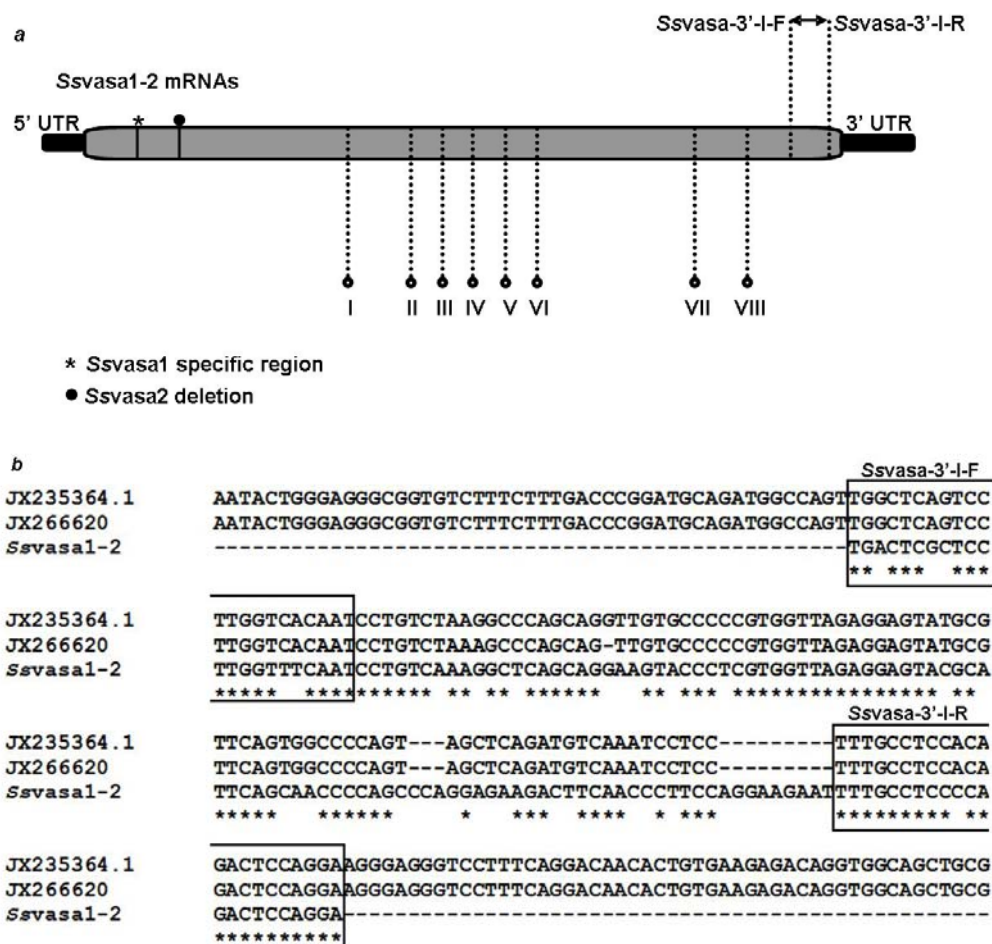


Fig. 1. (a) The graphical representation of *S. senegalensis* vasa markers 1 and 2 shows the position of the Svasa-3'-I-F and Svasa-3'-I-R primers in the Svasa1-2 3' region. Roman numbers the eight conserved regions of DEAD-box family. (b) The differences between Svasa1-2 and the two turbot vasa sequences: JX235364.1 (Lin *et al.* 2012) and JX266620 from this work, are showed. In black boxes the Svasa-3'-I primers Senegalese sole are showed.