

## Supplementary Material

### Exposure to Brefeldin A promotes initiation of meiosis in murine female germ cells

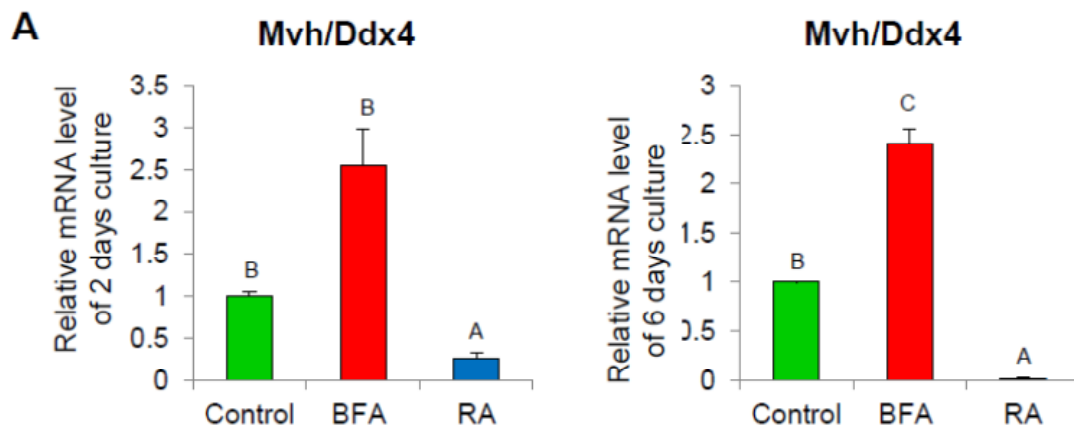
Lian-Jun Zhang<sup>A,C</sup>, Bo Chen<sup>A,C</sup>, Xin-Lei Feng<sup>A</sup>, Hua-Gang Ma<sup>B</sup>, Li-lan Sun<sup>B</sup>, Yan-Min Feng<sup>A</sup>, Gui-Jin Liang<sup>A</sup>, Shun-Feng Cheng<sup>A</sup>, Lan Li<sup>A</sup> and Wei Shen<sup>A,D</sup>

<sup>A</sup>Key Laboratory of Animal Reproduction and Germplasm Enhancement in Universities of Shandong, Qingdao Agricultural University, Qingdao, 266109, China.

<sup>B</sup>Center for Reproductive Biology, Weifang People's Hospital, Weifang, 261041, China.

<sup>C</sup>Lian-Jun Zhang and Bo Chen are the first coauthors.

<sup>D</sup>Corresponding author. Email: shenwei427@163.com



**Fig. S1.** *Mvh/Ddx4* expression in culture for 2 and 6 days in both BFA and RA group.

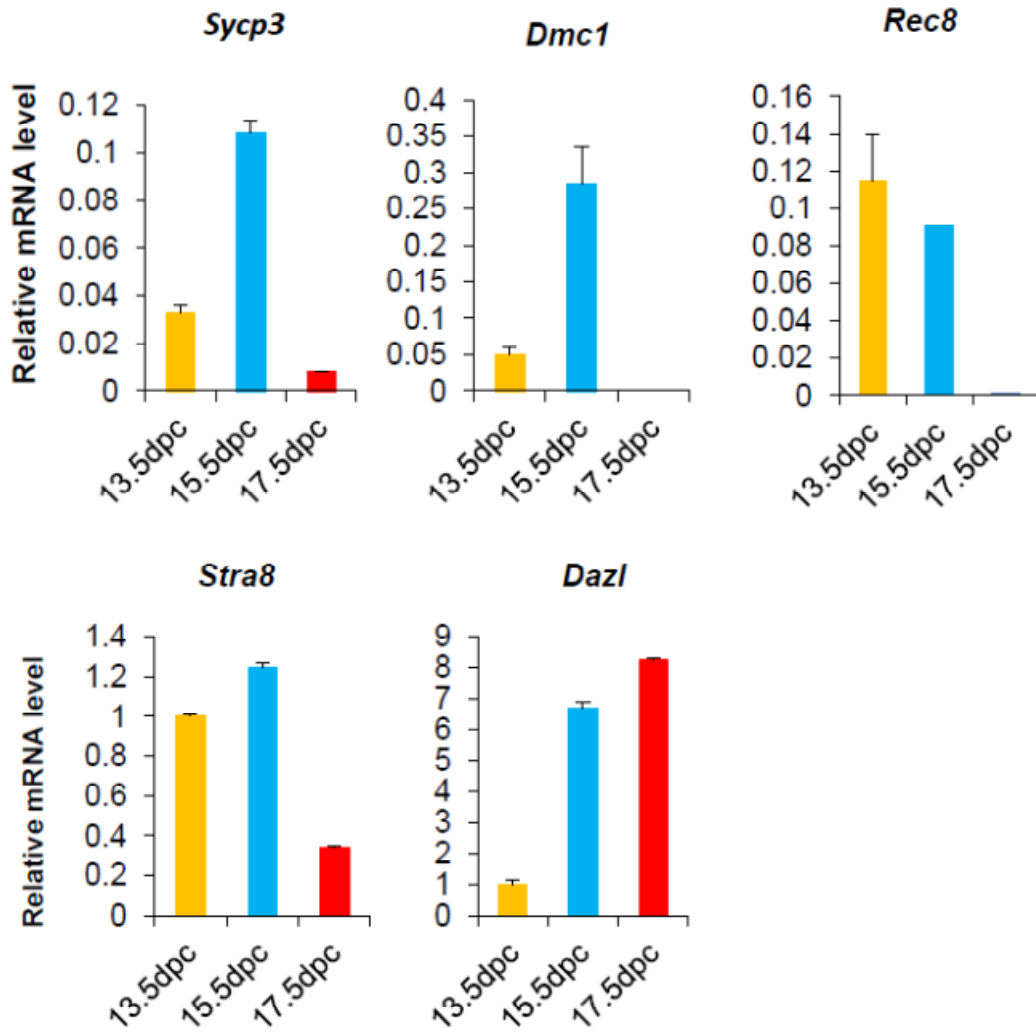
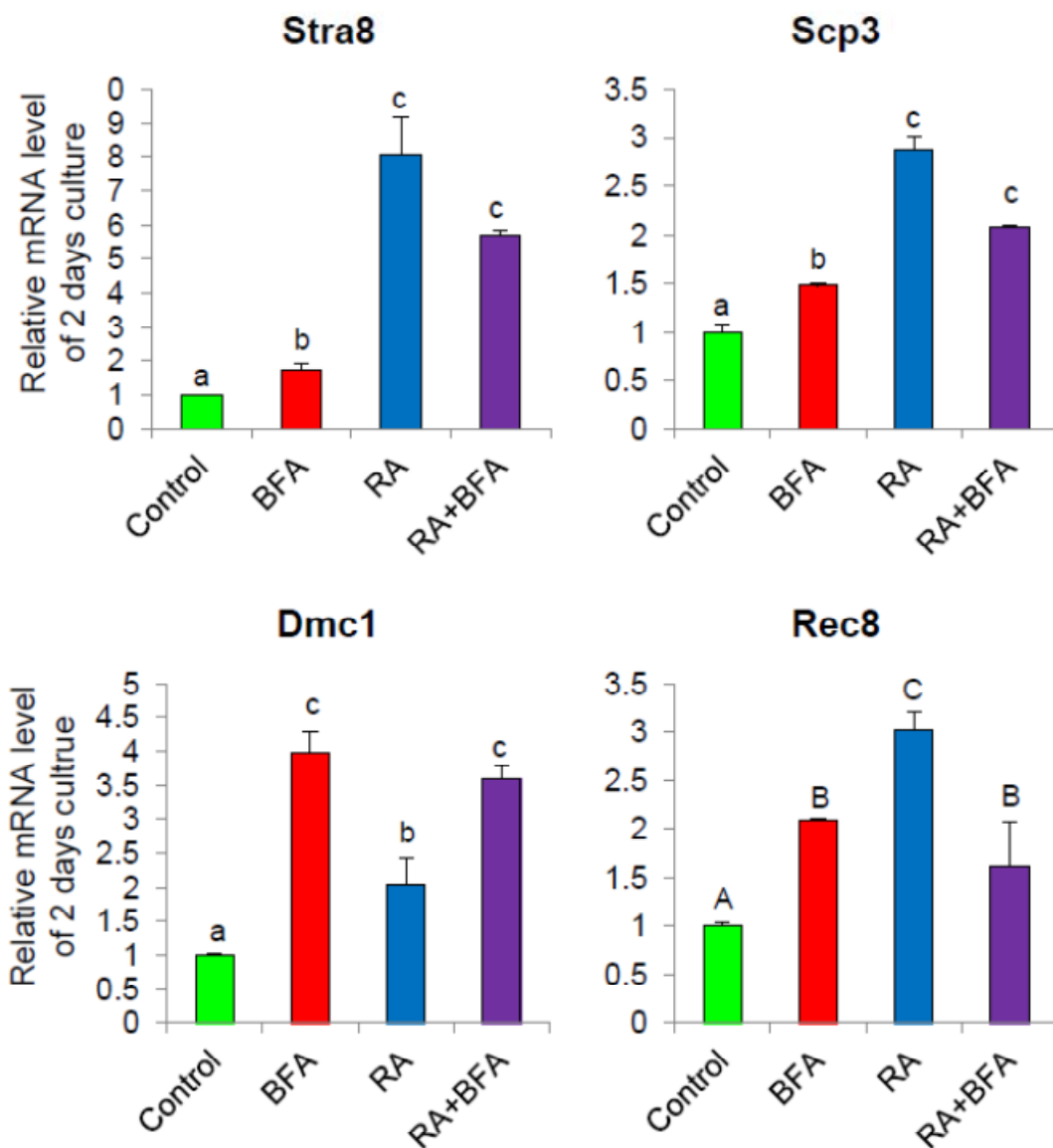
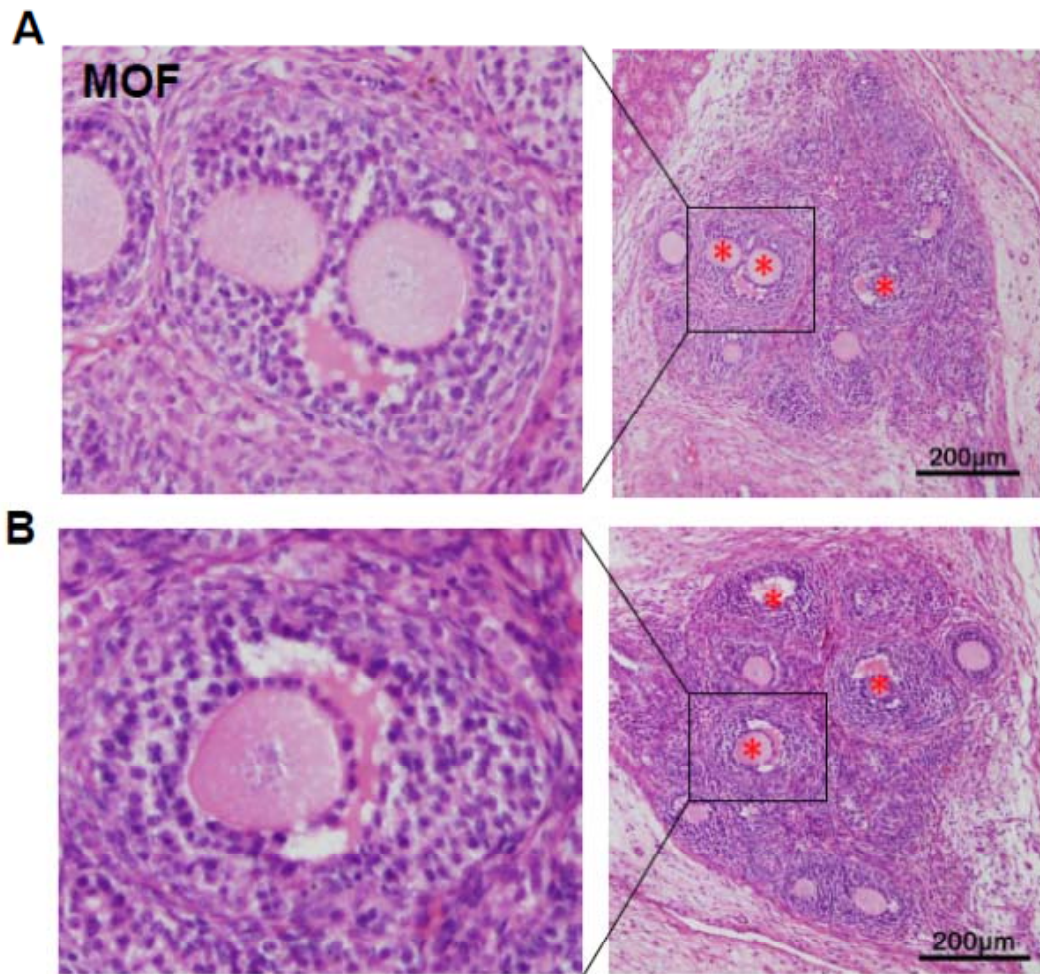


Fig. S2. Expression of meiosis-specific genes (*Stra8*, *Sycp3*, *Dmc1*, *Dazl* and *Rec8*) at 13.5 dpc, 15.5 dpc and 17.5 dpc *in vivo*.



**Fig. S3.** Expression of meiosis-specific genes (*Stra8*, *Scp3*, *Dmc1* and *Rec8*) in culture for 2 days in BFA, RA and BFA+RA group.



**Fig. S4.** Antral follicle was formed in the development organ after 22 days transplantation by histochemical analysis.