

## Supplementary Material

### **Regulation of primordial follicle recruitment by cross-talk between the Notch and phosphatase and tensin homologue (PTEN)/AKT pathways**

*Lin-Qing Wang<sup>A,B,\*</sup>, Jing-Cai Liu<sup>A,C,\*</sup>, Chun-Lei Chen<sup>A,B</sup>, Shun-Feng Cheng<sup>A,B</sup>, Xiao-Feng Sun<sup>A,C</sup>, Yong Zhao<sup>A,E</sup>, Shen Yin<sup>A,B</sup>, Zhu-Mei Hou<sup>A,D</sup>, Bo Pan<sup>E</sup>, Cheng Ding<sup>A,B</sup>, Wei Shen<sup>A,B</sup> and Xi-Feng Zhang<sup>A,B,F</sup>*

<sup>A</sup>Key Laboratory of Animal Reproduction and Germplasm Enhancement in Universities of Shandong, Qingdao 266109, China.

<sup>B</sup>College of Animal Science and Technology, Qingdao Agricultural University, Qingdao 266109, China.

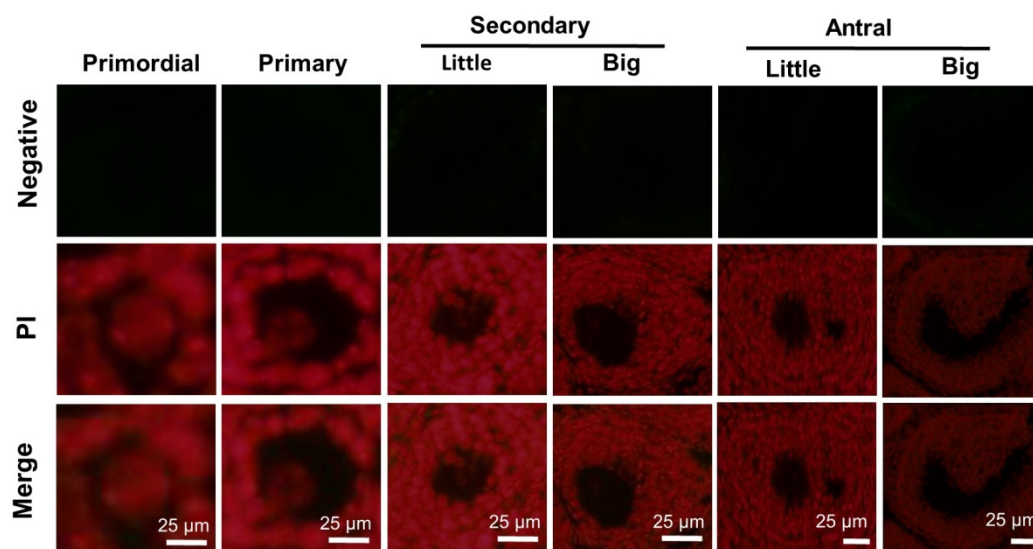
<sup>C</sup>College of Life Science, Qingdao Agricultural University, Qingdao 266109, China.

<sup>D</sup>College of Marine Science and Engineering, Qingdao Agricultural University, Qingdao 266109, China.

<sup>E</sup>Department of Animal and Poultry Science, University of Guelph, Guelph, ON N1G 2W1, Canada.

<sup>F</sup>Corresponding author. Email: zhangxf9465@163.com

\*Joint first authors.



**Fig. S1.** Negative control (no primary antibody for immunohistochemistry) for proteins involved in the Notch signaling pathway during follicular development.