

Supplementary Material

Involvement of G9A-like protein (GLP) in the development of mouse preimplantation embryos *in vitro*

Xian-Ju Huang^A, Xueshan Ma^B, Xuguang Wang^C, Xiaolong Zhou^A, Juan Li^A, Shao-Chen Sun^A and Honglin Liu^{A,D}

^ACollege of Animal Science and Technology, Nanjing Agricultural University, Weigang No. 1, Nanjing 210095, China.

^BState Key Laboratory of Reproductive Biology, Institute of Zoology, Chinese Academy of Sciences, Peking University People's Hospital, Beichen West Road No. 1, Chaoyang District, Beijing 100101, China.

^CAnimal Science College, Xinjiang Agricultural University, Nongda Road No. 311, Wulumuqi, Xinjiang 830052, China.

^DCorresponding author. Email: liuhonglin@njau.edu.cn

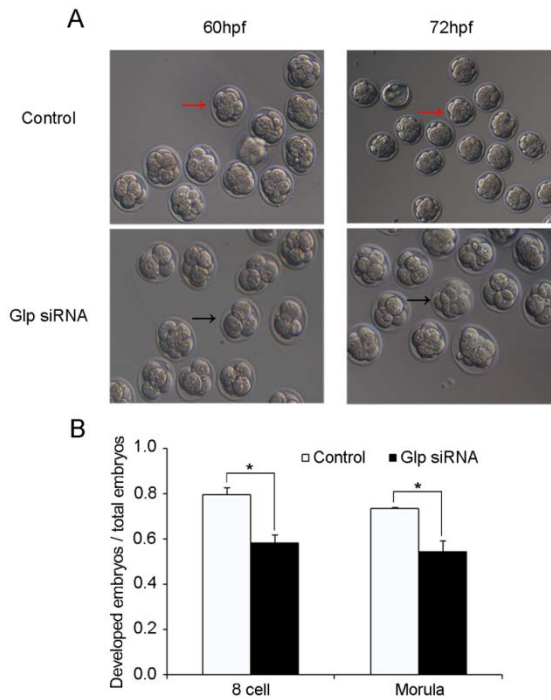


Fig. S1. The embryos developmental stages at definite time. (A) At 60 hpf, embryos have been already at 8-cell stage in control group and several embryos at 8-cell stage in Glp-siRNA group. At 72 hpf, only several embryos were at the morula stage in the Glp-siRNA group, while most embryos were at the morula stage in the control group (black arrows indicate retarded embryos, red arrows indicate embryos at the appropriate stage). (B) The developmental ratio of embryos in different groups at the 60 hpf or 72 hpf (* $P < 0.05$).

Table S1. Pairs of primers used in the study

Gene name	Primer sequence	Amplicon Size/bp	PrimerBank ID
<i>Glp</i>	F CAGATGGAGAAACAAATGGGTCT	171	26352233a1
	R TTTGCTTCCCCACTTCTGTGT		
<i>Oct4</i>	F GGCTTCAGACTTCGCCTCC	211	7305399a1
	R AACCTGAGGTCCACAGTATGC		
<i>Nanog</i>	F TCTTCCTGGTCCCCACAGTTT	100	31338864a1
	R GCAAGAATAGTTCTCGGGATGAA		
<i>Sox2</i>	F GCGGAGTGGAACCTTTGTCC	157	31543759a1
	R CGGGAAGCGTGTACTTATCCTT		
<i>Caspase 3</i>	F TGGTGATGAAGGGGTCATTATG	105	24416451a1
	R TTCGGCTTTCCAGTCAGACTC		
<i>Caspase 9</i>	F GACGCTCTGCTGAGTCGAG	244	6440948a1
	R GGTCTAGGGGTTTAACAGCCTC		
<i>Hprt1</i>	F TCAGTCAACGGGGGACATAAA	142	7305155a1
	R GGGGCTGTACTGCTTAACCAG		

Table S2. The number of embryos in the developmental process

Development from 2-cell to morula was examined in three replicates with each replicate group containing 30 to 43 embryos (* P < 0.05)

Group	Percentage(%) > 8cell (60 hpf)	Percentage(%) > Morula (72hpf)
Control	79.62 ± 0.03	73.53 ± 0.01
Glp siRNA	58.43 ± 0.04*	54.32 ± 0.05*