

Supplementary Material

IVM of mouse fully grown germinal vesicle oocytes upon a feeder layer of selected cumulus cells enhances their developmental competence

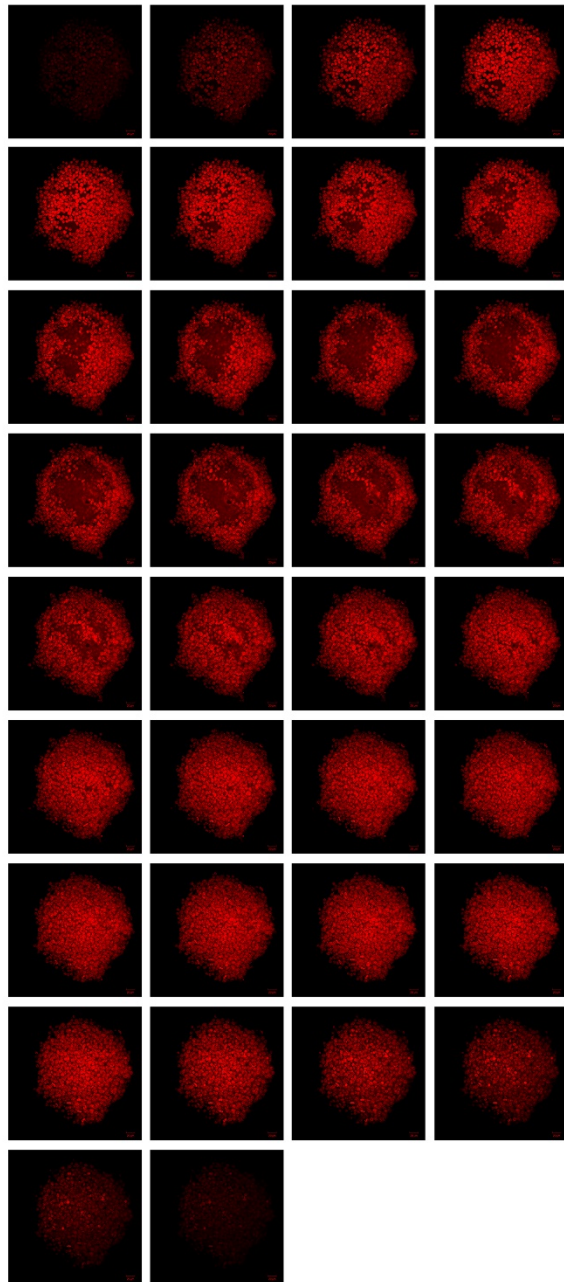
Federica Cavallera^A, Milena Simovic^{A,B}, Mario Zanoni^A, Valeria Merico^A, Silvia Garagna^{A,C} and Maurizio Zuccotti^{A,C}

^ALaboratorio di Biologia dello Sviluppo, Dipartimento di Biologia e Biotecnologie ‘Lazzaro Spallanzani’, University of Pavia, Via Ferrata, 9, 27100 Pavia, Italy.

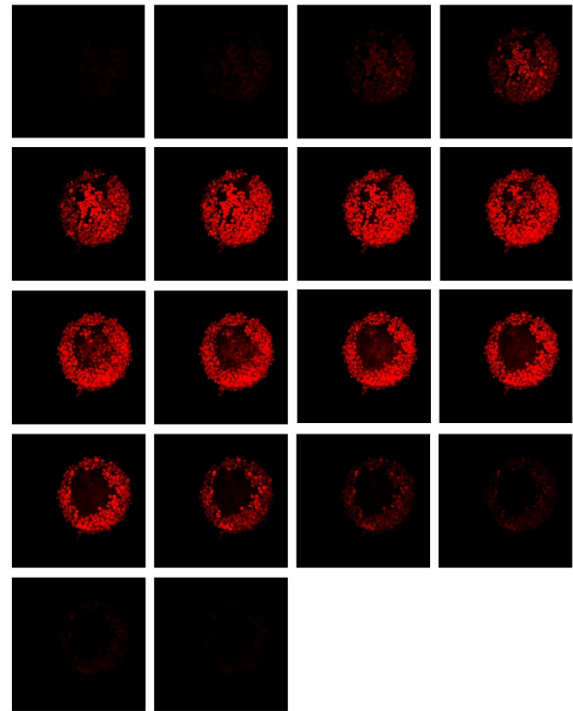
^BGerman Cancer Research Center, Im Neuenheimer Feld 280, Heidelberg 69120, Germany.

^CCorresponding authors. Email: silvia.garagna@unipv.it; maurizio.zuccotti@unipv.it

SN-COC

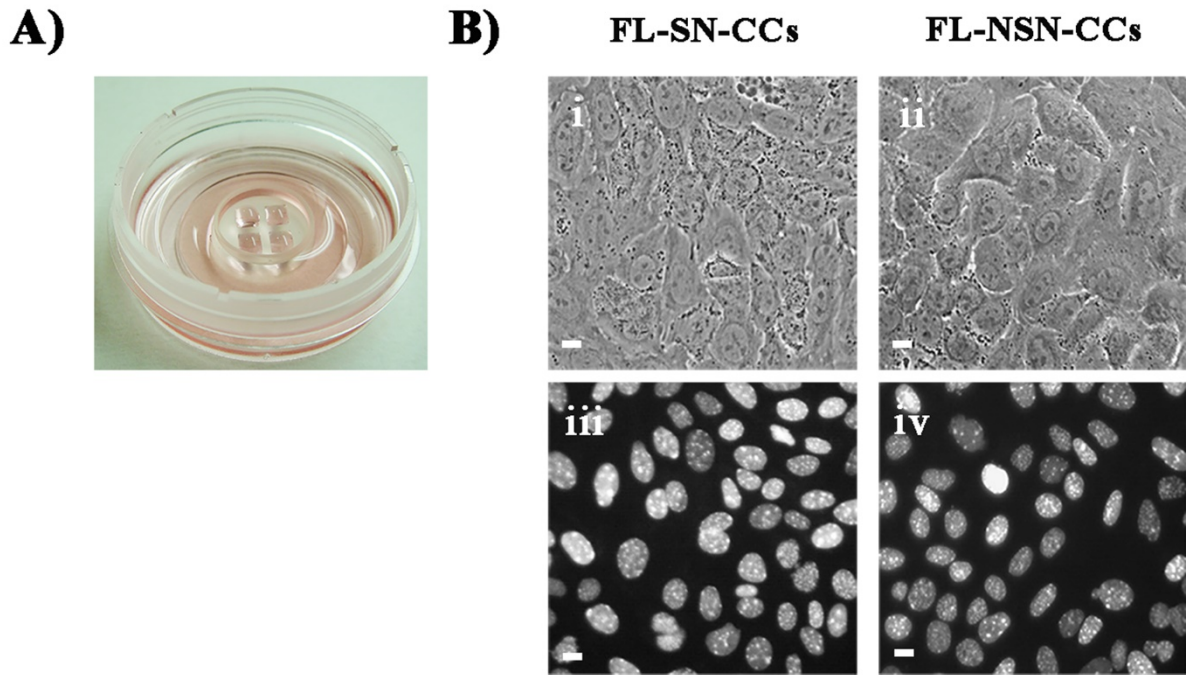


NSN-COC



Supplementary Figure 1

Fig. S1. Z-stack images of the Cumulus-Oocyte-Complexes enclosing Surrounded Nucleolus (SN) or Not Surrounded Nucleolus (NSN) oocytes shown in Figure 1.



Supplementary Figure 2

Fig. S2. Cumulus cells feeder layer. (A) Micro-Insert 4-well (Ibidi); (B) Representative images of a feeder layer of cumulus cells isolated from Surrounded Nucleolus oocytes (FL-SN-CCs) (i, iii) and a feeder layer of cumulus cells isolated from Not Surrounded Nucleolus oocytes (FL-NSN-CCs) (ii, iv) taken under phase contrast and after Hoechst 33342 staining. Bar, 5 μ m.