

## Supplementary Material

### Effects of LH and FSH on androgen and oestrogen release in the myometrium of pigs during the oestrous cycle and early pregnancy

Ewa M. Waszkiewicz<sup>A</sup>, Agata Zmijewska<sup>A</sup>, Wiktoria Kozłowska<sup>A</sup> and Anita Franczak<sup>A,B</sup>

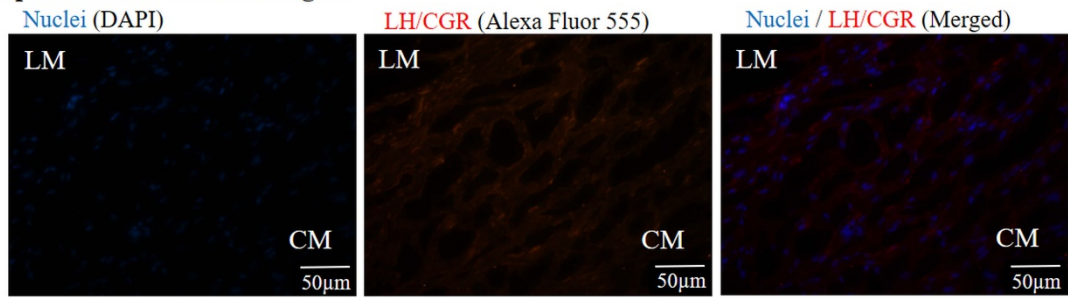
<sup>A</sup>Department of Animal Anatomy and Physiology, Faculty of Biology and Biotechnology, University of Warmia and Mazury in Olsztyn, Oczapowskiego 1A, 10-718 Olsztyn, Poland.

<sup>B</sup>Corresponding author. Email: [anitaf@uwm.edu.pl](mailto:anitaf@uwm.edu.pl)

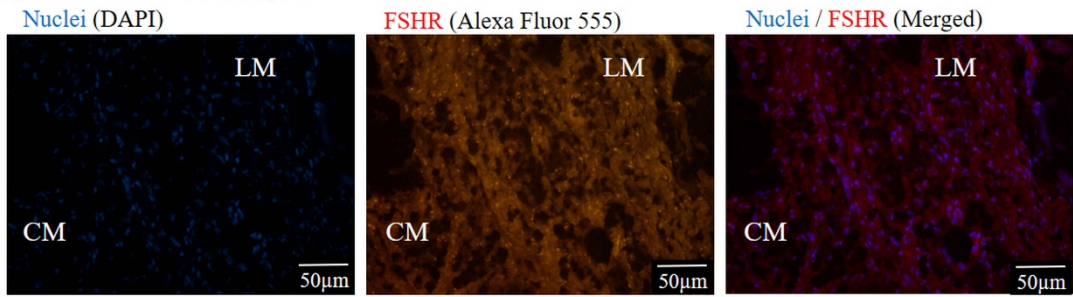
**Figure S1.** The randomly selected representative photographs of porcine myometrium after immunodetection of luteinizing hormone/chorion gonadotropin receptor (LH/CGR), follicle-stimulating hormone receptor (FSHR), 17 $\beta$ -hydroxysteroid dehydrogenase 1 (17 $\beta$ HSD1), and the relevant negative controls. Magnification 400  $\times$ . CM – circular muscle; LM – longitudinal muscle. The nuclei are stained with DAPI (blue), and binding sites are visualized with Alexa Fluor 555 (red).

(next page)

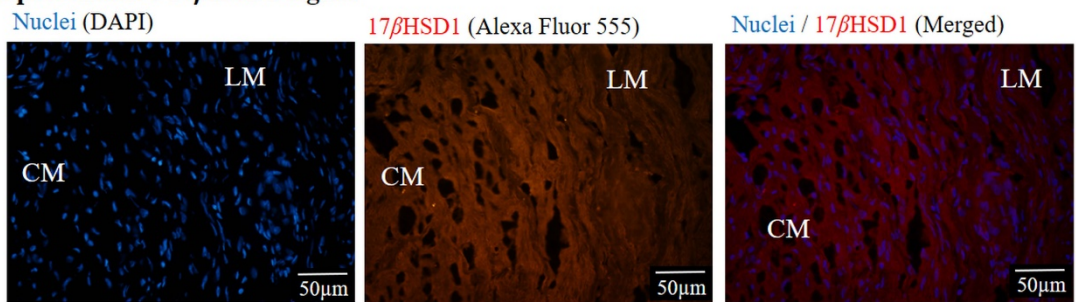
**A. Representative LH/CGR signal**



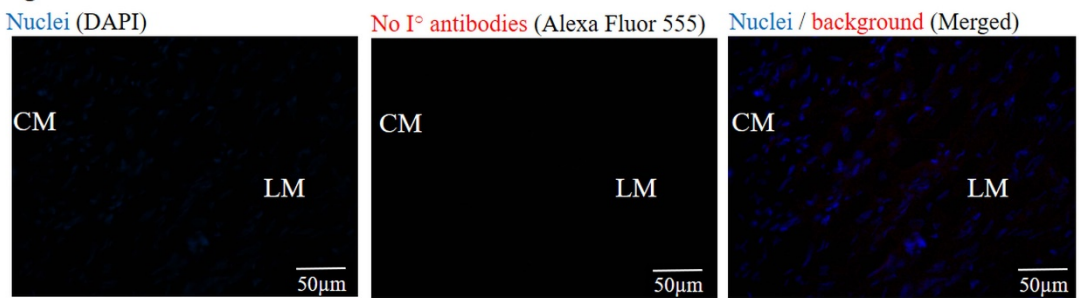
**B. Representative FSHR signal**



**C. Representative 17 $\beta$ HSD1 signal**



**D. Negative control 1**



**E. Negative control 2**

