

**Supplementary material**

**Transfer of the New Caledonian genus *Boronella* to *Boronia* (Rutaceae) based on analyses of cpDNA and nrDNA**

*Michael J. Bayly*<sup>A,E,F</sup>, *Marco F. Duretto*<sup>B</sup>, *Gareth D. Holmes*<sup>A,C</sup>, *Paul I. Forster*<sup>D</sup>, *David J. Cantrill*<sup>C</sup>  
and *Pauline Y. Ladiges*<sup>A,E</sup>

<sup>A</sup>School of Botany, The University of Melbourne, Vic. 3010, Australia.

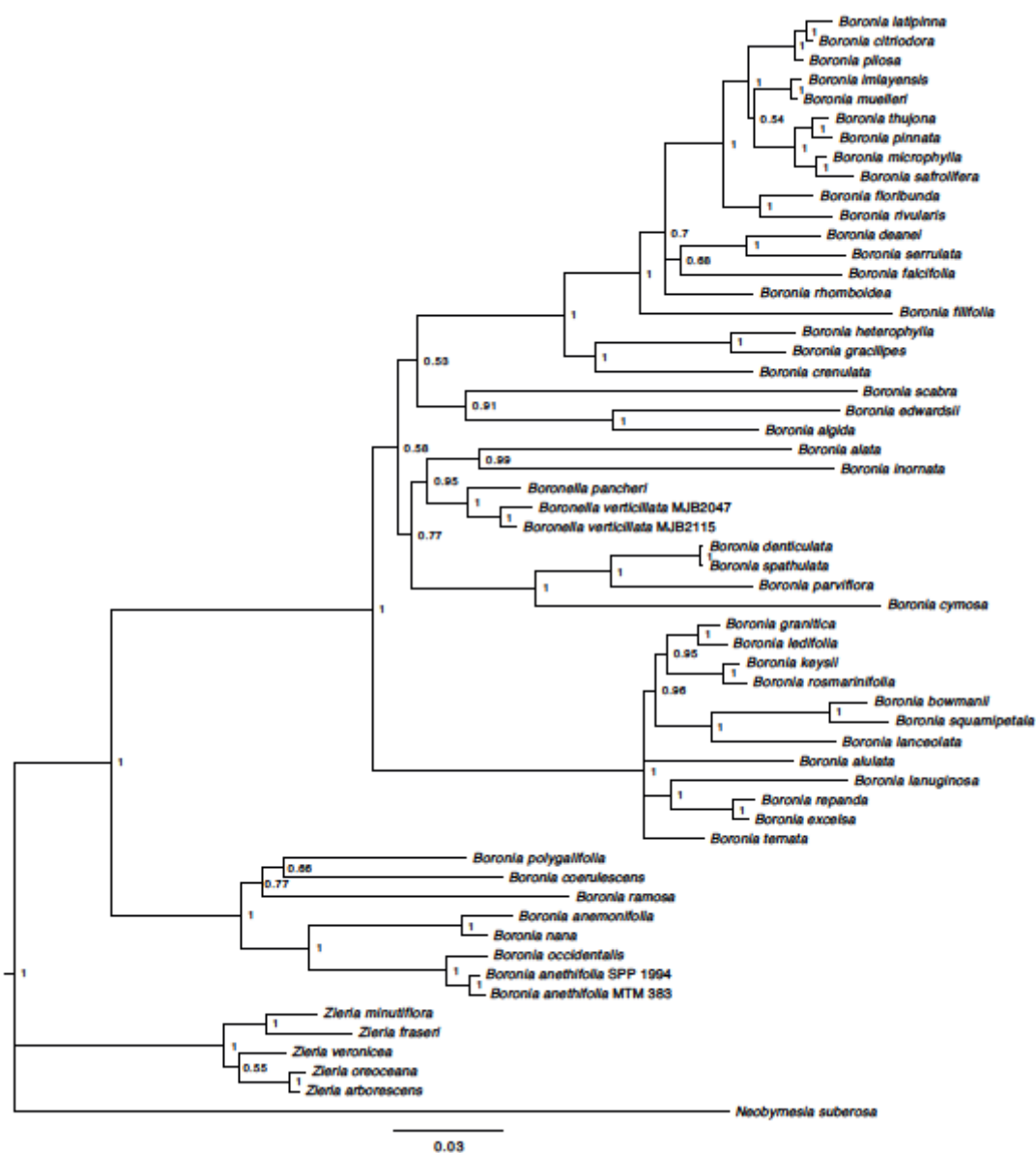
<sup>B</sup>National Herbarium of New South Wales, Royal Botanic Gardens and Domain Trust,  
Mrs Macquaries Road, Sydney, NSW 2000, Australia.

<sup>C</sup>Royal Botanic Gardens Melbourne, Birdwood Avenue, South Yarra, Vic. 3141, Australia.

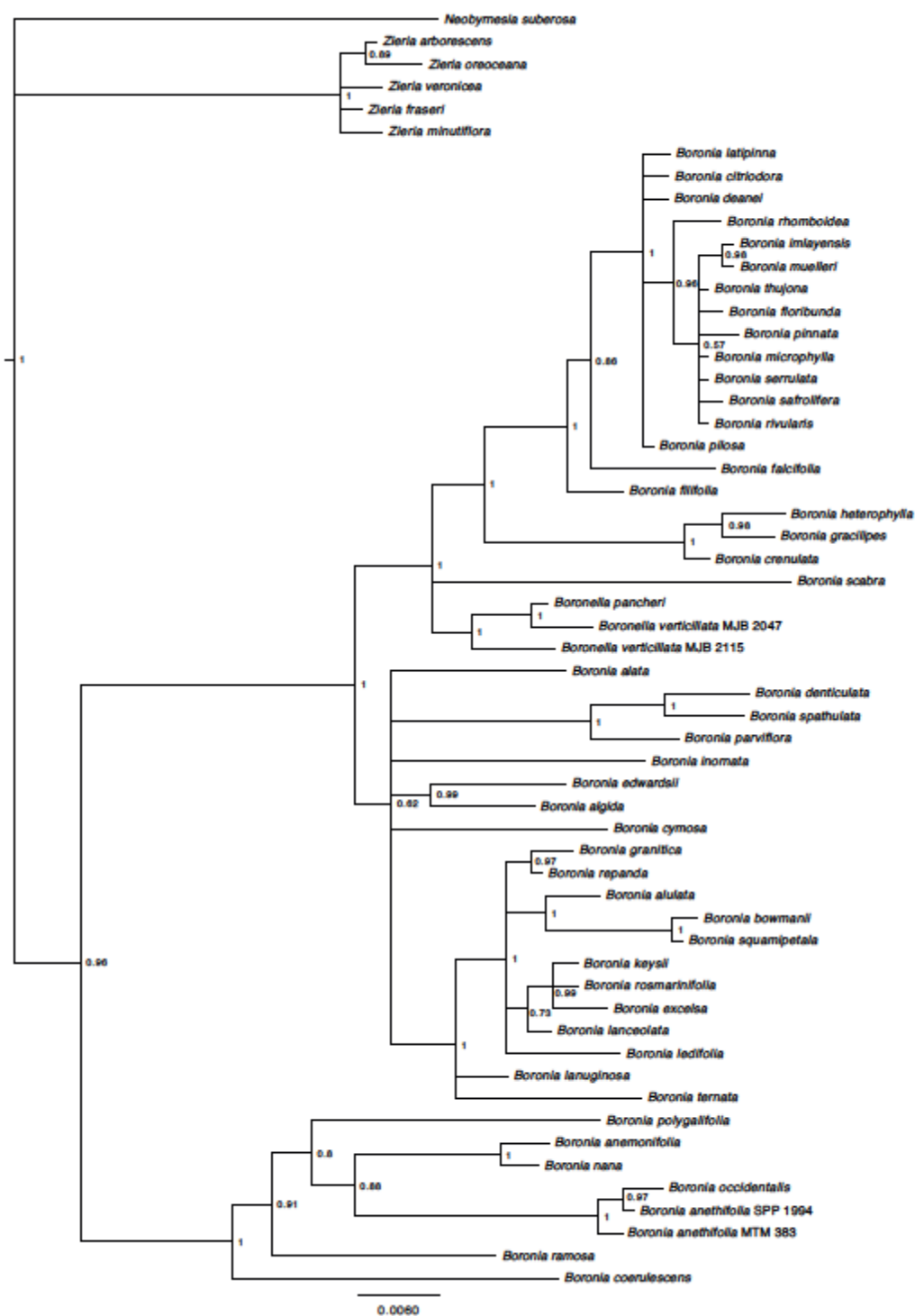
<sup>D</sup>Queensland Herbarium, Department of Science, Information Technology & Innovation,  
Brisbane Botanic Gardens, Toowong, Queensland, Australia.

<sup>E</sup>Present address: School of BioSciences, The University of Melbourne, Vic. 3010, Australia.

<sup>F</sup>Corresponding author. Email: mbayly@unimelb.edu.au



**Fig. S1.** Majority-rule consensus tree based on Bayesian inference analysis of combined internal transcribed spacer (ITS) and external transcribed spacer (ETS) datasets, showing mean branch lengths. Numbers above nodes are Bayesian posterior probabilities.



**Fig. S2.** Majority-rule consensus tree based on Bayesian inference analysis of *trnL-trnF* dataset, showing mean branch lengths. Numbers above nodes are Bayesian posterior probabilities.