

**Accessory publication**

**Long-term post-fire succession of *Pinus brutia* forest in the east Mediterranean**

*Ali Kavgacı<sup>A</sup>, Andraž Čarni<sup>B</sup>, Saime Başaran<sup>A</sup>, Mehmet Ali Başaran<sup>A</sup>, Petra Košir<sup>B</sup>, Aleksander Marinšek<sup>B</sup> and Urban Šilc<sup>B,C</sup>*

<sup>A</sup>Southwest Anatolia Forest Research Institute, POB 264, 07002 Antalya, Turkey.

<sup>B</sup>Institute of Biology, Scientific Research Centre of the Slovenian Academy of Sciences and Arts, Novi trg 2, 1000 Ljubljana, Slovenia.

<sup>C</sup>Corresponding author. Email: urban@zrc-sazu.si

**Table A1. List of taxa observed in all studied age classes**

Species abundance is shown as constancy classes, the figure in parentheses indicates Barkman's Total Cover Value of species within every successional stage. Abbreviations: layer: t, tree layer; s, shrub layer; h, herb layer; life span: a, annual; b, biennial; p, perennial; Wd, woody; Life form (Raunkaier): PH, Phanerophytes; CH, Chamaephytes; H, Hemicryptophytes; G, Geophytes; TH, Therophytes; Regeneration form: OR, obligate resprouter; OS, obligate seeder; FR, facultative resprouter; C, coloniser

Age No. of plots	1 10	2 10	3 10	4 10	7 10	12 10	20 10	40 10	Mature 10	Family	Raunkaier form	Life span	Regeneratio n form
<i>Aetheorhiza bulbosa</i> ssp. <i>microcephala</i>	70 (2.7)	50 (1)	30 (0.6)	10 (0.2)	30 (0.6)	– (–)	70 (1.5)	– (–)	90 (2.2)	Compositae	H	p	OR
<i>Ajuga chamaepitys</i> ssp. <i>chia</i> var. <i>chia</i>	80 (1.6)	30 (0.6)	– (–)	– (–)	– (–)	– (–)	– (–)	10 (0.2)	– (–)	Labiatae	H	p	OR?
<i>Alcea pallida</i>	20 (0.4)	– (–)	– (–)	– (–)	– (–)	– (–)	– (–)	10 (0.2)	– (–)	Malvaceae	H	b	
<i>Allium pallens</i> ssp. <i>pallens</i>	– (–)	20 (0.4)	– (–)	– (–)	– (–)	– (–)	50 (1.1)	– (–)	– (–)	Liliaceae	G	p	OR
<i>Anagallis arvensis</i> var. <i>arvensis</i>	60 (1.2)	40 (0.9)	– (–)	– (–)	40 (0.8)	– (–)	– (–)	– (–)	– (–)	Primulaceae	TH	a	OS
<i>Anagallis foemina</i>	80 (1.7)	40 (0.8)	70 (1.4)	– (–)	– (–)	– (–)	– (–)	– (–)	– (–)	Primulaceae	TH	a	OS
<i>Anthemis pseudocotula</i>	10 (0.2)	70 (1.6)	– (–)	30 (0.6)	– (–)	– (–)	– (–)	– (–)	– (–)	Compositae	TH	a	OS
<i>Arbutus andrachne</i>	50 (1)	80 (5.1)	– (–)	100 (9.6)	90 (4.6)	100 (9.5)	90 (3.9)	90 (7.3)	80 (5.8)	Ericaceae	PH	Wd	OR?
<i>Arisarum vulgare</i> ssp. <i>vulgare</i>	30 (0.6)	10 (0.2)	60 (1.2)	80 (1.6)	100 (2.2)	– (–)	30 (0.6)	– (–)	90 (2.1)	Araceae	G	p	OR
<i>Aristolochia paecilantha</i>	– (–)	– (–)	80 (1.6)	30 (0.6)	40 (0.8)	– (–)	– (–)	– (–)	60 (1.2)	Aristolochiaceae	H	p	
<i>Asparagus acutifolius</i>	50 (1.4)	70 (1.4)	80 (1.6)	90 (1.8)	50 (1)	90 (1.8)	100 (3.3)	50 (1)	90 (1.8)	Liliaceae	CH	Wd	OR
<i>Aster laevis</i>	70 (1.4)	20 (0.4)	– (–)	– (–)	– (–)	– (–)	– (–)	– (–)	– (–)	Compositae	H	p	OR
<i>Astragalus brachypterus</i>	10 (0.2)	– (–)	– (–)	– (–)	– (–)	– (–)	– (–)	10 (0.2)	– (–)	Leguminosae	PH	Wd	OR

Age No. of plots	1 10	2 10	3 10	4 10	7 10	12 10	20 10	40 10	Mature 10	Family	Raunkaier form	Life span	Regeneratio n form
<i>Biserrula pelecinus</i>	10 (0.2)	10 (0.2)	30 (0.6)	– (–)	– (–)	– (–)	– (–)	– (–)	– (–)	Leguminosae	TH	a	OS
<i>Brachypodium pinnatum</i>	– (–)	– (–)	– (–)	– (–)	10 (0.2)	20 (0.5)	– (–)	30 (0.6)	40 (0.8)	Gramineae	H	p	OR
<i>Bromus rigidus</i>	– (–)	– (–)	20 (0.4)	50 (1)	10 (0.3)	50 (1.2)	– (–)	– (–)	– (–)	Gramineae	TH	a	OS
<i>Bromus scoparius</i>	– (–)	– (–)	– (–)	30 (0.6)	70 (3.8)	30 (0.6)	– (–)	– (–)	10 (0.2)	Gramineae	TH	a	OS
<i>Bromus tectorum</i>	– (–)	– (–)	– (–)	30 (1.7)	10 (0.2)	– (–)	– (–)	– (–)	– (–)	Gramineae	TH	a	OS
<i>Campanula lyrata</i> ssp. <i>lyrata</i>	– (–)	50 (1)	– (–)	– (–)	– (–)	30 (0.6)	– (–)	– (–)	– (–)	Campanulaceae	H	b/p	
<i>Cardamine hirsuta</i>	– (–)	50 (1.1)	– (–)	10 (0.2)	– (–)	40 (0.8)	– (–)	– (–)	10 (0.2)	Cruciferae	TH	a	OS
<i>Carex flacca</i> ssp. <i>serrulata</i>	50 (1.5)	90 (3.4)	100 (5.7)	100 (2.8)	100 (2.9)	100 (8)	90 (2.4)	100 (2.6)	100 (2.5)	Cyperaceae	G	p	OR
<i>Carex muricata</i>	50 (1.3)	– (–)	10 (0.2)	– (–)	– (–)	– (–)	20 (0.5)	– (–)	– (–)	Cyperaceae	H	p	
<i>Carthamus lanatus</i>	80 (1.8)	– (–)	– (–)	– (–)	– (–)	– (–)	– (–)	– (–)	– (–)	Compositae	TH	a	OS
<i>Catapodium rigidum</i> ssp. <i>rigidum</i> var. <i>rigidum</i>	60 (1.2)	70 (1.6)	20 (0.4)	80 (1.6)	50 (1.2)	10 (0.2)	30 (0.6)	– (–)	20 (0.4)	Gramineae	TH	a	OS
<i>Cerastium glomeratum</i>	– (–)	70 (1.8)	20 (0.4)	70 (1.6)	– (–)	20 (0.4)	– (–)	– (–)	– (–)	Caryophyllaceae	TH	a	OS
<i>Ceratonia siliqua</i>	20 (0.5)	20 (0.5)	60 (1.3)	– (–)	40 (0.9)	– (–)	10 (0.4)	– (–)	– (–)	Leguminosae	PH	Wd	OR
<i>Ceterah officinarum</i>	– (–)	– (–)	– (–)	– (–)	20 (0.4)	– (–)	20 (0.4)	– (–)	60 (1.2)	Pteridophyta	H	p	
<i>Chrysopogon gryllus</i> ssp. <i>gryllus</i>	40 (3.2)	– (–)	– (–)	10 (0.2)	20 (0.4)	– (–)	– (–)	– (–)	– (–)	Gramineae	H	p	
<i>Cichorium intybus</i>	10 (0.2)	– (–)	– (–)	– (–)	– (–)	– (–)	– (–)	– (–)	– (–)	Compositae	H	a	OS

Age No. of plots	1 10	2 10	3 10	4 10	7 10	12 10	20 10	40 10	Mature 10	Family	Raunkaier form	Life span	Regeneratio n form
<i>Cirsium arvense</i> ssp. <i>vestitum</i>	20 (0.4)	– (–)	– (–)	– (–)	– (–)	– (–)	10 (0.2)	10 (0.2)	10 (0.2)	Compositae	H	p	OR
<i>Cirsium creticum</i> ssp. <i>creticum</i>	10 (0.2)	20 (0.4)	– (–)	– (–)	– (–)	10 (0.2)	– (–)	– (–)	– (–)	Compositae	H	p	OR
<i>Cistus creticus</i>	60 (2.3)	100 (10)	100 (9)	100 (27)	100 (25)	80 (6.6)	30 (0.8)	– (–)	70 (2.6)	Cistaceae	PH	Wd	OS
<i>Cistus salviifolius</i>	– (–)	10 (0.2)	100 (21)	– (–)	90 (5.9)	100 (22)	60 (1.6)	70 (1.6)	20 (0.4)	Cistaceae	PH	Wd	OS
<i>Conyza canadensis</i>	80 (1.7)	20 (0.4)	– (–)	– (–)	– (–)	– (–)	– (–)	– (–)	– (–)	Compositae	TH	a/b	OS
<i>Cotinus coggyria</i>	100 (7.2)	50 (2.3)	60 (1.3)	100 (8.9)	90 (4.2)	80 (2.6)	50 (6.1)	100 (5.4)	100 (28)	Anacardiaceae	PH	Wd	OR
<i>Crataegus monogyna</i> ssp. <i>monogyna</i>	20 (0.4)	– (–)	– (–)	– (–)	– (–)	– (–)	40 (1.1)	20 (0.4)	– (–)	Rosaceae	PH	Wd	OR
<i>Crepis reuterana</i> ssp. <i>reuterana</i>	60 (1.3)	40 (3.2)	30 (0.8)	50 (1.1)	40 (0.8)	90 (2)	70 (1.7)	– (–)	40 (0.8)	Compositae	H	p	OR
<i>Crepis</i> sp.	– (–)	30 (0.7)	– (–)	30 (0.6)	– (–)	– (–)	– (–)	– (–)	– (–)	Compositae			
<i>Crucianella latifolia</i>	40 (1)	80 (4.4)	10 (0.2)	60 (1.4)	100 (2.5)	40 (1)	30 (0.6)	– (–)	10 (0.2)	Rubiaceae	TH	a	OS
<i>Cupressus sempervirens</i>	– (–)	– (–)	– (–)	– (–)	– (–)	90 (3.8)	20 (0.5)	10 (0.2)	– (–)	Cupressaceae	PH	Wd	OR
<i>Cynodon dactylon</i> var. <i>dactylon</i>	10 (0.2)	10 (0.2)	– (–)	– (–)	– (–)	– (–)	– (–)	– (–)	– (–)	Gramineae	G	p	OR
<i>Cytinus hypocistis</i> ssp. <i>kermesinus</i>	– (–)	– (–)	20 (0.4)	40 (0.8)	100 (2.4)	30 (0.7)	30 (0.6)	– (–)	30 (0.6)	Rafflesiaceae	H	p	DR
<i>Dactylis glomerata</i> ssp. <i>hispanica</i>	50 (1.1)	20 (0.4)	30 (0.6)	– (–)	20 (0.5)	20 (0.4)	50 (1.3)	– (–)	– (–)	Gramineae	H	p	OR
<i>Daucus carota</i>	40 (0.8)	30 (0.6)	– (–)	– (–)	– (–)	– (–)	– (–)	– (–)	– (–)	Umbelliferae	TH	p	OS
<i>Dorycnium pentaphyllum</i> ssp. <i>anatolicum</i>	– (–)	– (–)	– (–)	– (–)	– (–)	80 (2.2)	40 (0.8)	10 (0.2)	– (–)	Leguminosae	sPH	Wd	OR

Age No. of plots	1 10	2 10	3 10	4 10	7 10	12 10	20 10	40 10	Mature 10	Family	Raunkaier form	Life span	Regeneratio n form
<i>Erica manipuliflora</i>	20 (0.4)	– (–)	– (–)	– (–)	– (–)	– (–)	– (–)	20 (0.5)	– (–)	Ericaceae	PH	Wd	FS
<i>Erophila verna</i> ssp. <i>praecox</i>	– (–)	10 (0.2)	– (–)	– (–)	– (–)	10 (0.2)	– (–)	– (–)	– (–)	Cruciferae	TH	a	OS
<i>Eryngium falcatum</i>	100 (4.7)	80 (2)	50 (1)	60 (1.5)	100 (2.7)	60 (2.4)	90 (3.5)	50 (1.1)	80 (1.6)	Umbelliferae	H	p	
<i>Euphorbia characias</i> ssp. <i>wulfenii</i>	– (–)	– (–)	– (–)	40 (0.9)	– (–)	– (–)	20 (0.4)	10 (0.2)	30 (0.8)	Euphorbiaceae	PH	Wd	OS
<i>Euphorbia exigua</i> var. <i>retusa</i>	20 (0.4)	– (–)	10 (0.2)	20 (0.4)	40 (0.8)	– (–)	– (–)	10 (0.2)	– (–)	Euphorbiaceae	TH	a	OS
<i>Euphorbia stricta</i>	– (–)	60 (2.6)	– (–)	– (–)	20 (0.4)	– (–)	– (–)	– (–)	– (–)	Euphorbiaceae	TH	a	OS
<i>Filago eriocephala</i>	40 (0.8)	90 (1.8)	– (–)	– (–)	10 (0.2)	– (–)	– (–)	– (–)	– (–)	Compositae	TH	a	OS
<i>Fontanesia philliraeoides</i> ssp. <i>philliraeoides</i>	50 (1)	30 (0.7)	– (–)	60 (2.4)	90 (2.4)	10 (0.2)	80 (4.7)	50 (1)	30 (0.7)	Oleaceae	PH	Wd	OR
<i>Fritillaria acmopetala</i> ssp. <i>acmopetala</i>	20 (0.4)	60 (1.4)	– (–)	– (–)	– (–)	– (–)	– (–)	– (–)	– (–)	Liliaceae	G	p	OR
<i>Gagea peduncularis</i>	– (–)	30 (0.6)	20 (0.4)	– (–)	20 (0.4)	– (–)	– (–)	– (–)	– (–)	Liliaceae	G	p	OR
<i>Galium aparine</i>	30 (0.6)	– (–)	– (–)	– (–)	– (–)	– (–)	– (–)	– (–)	10 (0.2)	Rubiaceae	TH	p	OS
<i>Galium murale</i>	10 (0.2)	20 (0.4)	– (–)	10 (0.2)	10 (0.2)	– (–)	– (–)	– (–)	– (–)	Rubiaceae	TH	a	OS
<i>Galium setaceum</i>	40 (0.9)	10 (0.2)	– (–)	– (–)	– (–)	– (–)	– (–)	– (–)	– (–)	Rubiaceae	TH	a	OS
<i>Geranium columbinum</i>	60 (1.2)	– (–)	– (–)	40 (0.8)	– (–)	– (–)	– (–)	– (–)	– (–)	Geraniaceae	TH	a	OS
<i>Geranium lucidum</i>	– (–)	– (–)	10 (0.2)	50 (1)	10 (0.2)	– (–)	– (–)	– (–)	– (–)	Geraniaceae	TH	a	OS
<i>Geranium molle</i> ssp. <i>molle</i>	– (–)	– (–)	– (–)	30 (0.6)	10 (0.2)	– (–)	– (–)	– (–)	10 (0.2)	Geraniaceae	TH	a	OS

Age No. of plots	1 10	2 10	3 10	4 10	7 10	12 10	20 10	40 10	Mature 10	Family	Raunkaier form	Life span	Regeneratio n form
<i>Geranium purpureum</i>	– (–)	20 (0.4)	20 (0.4)	50 (1)	– (–)	10 (0.2)	10 (0.2)	– (–)	60 (1.5)	Geraniaceae	TH	a	OS
<i>Gladiolus anatolicus</i>	80 (2.1)	40 (0.8)	– (–)	30 (0.6)	90 (1.8)	40 (0.8)	30 (0.6)	20 (0.4)	20 (0.4)	Iridaceae	G	p	OR
<i>Glycyrrhiza asymmetrica</i>	– (–)	10 (0.2)	– (–)	– (–)	– (–)	– (–)	– (–)	10 (0.2)	– (–)	Leguminosae	H	p	OS
<i>Helianthemum racemosum</i>	30 (0.6)	10 (0.2)	– (–)	– (–)	– (–)	– (–)	– (–)	– (–)	– (–)	Cistaceae	PH	Wd	OR
<i>Hordeum bulbosum</i>	– (–)	– (–)	– (–)	– (–)	– (–)	10 (0.2)	20 (0.4)	30 (0.6)	– (–)	Gramineae	H	p	
<i>Hymenocarpus circinnatus</i>	40 (0.9)	– (–)	50 (1.2)	– (–)	20 (0.4)	30 (0.6)	10 (0.2)	– (–)	– (–)	Leguminosae	TH	a	OS
<i>Hypericum perforatum</i>	– (–)	– (–)	– (–)	– (–)	– (–)	– (–)	10 (0.2)	– (–)	10 (0.2)	Guttiferae	H	p	C
<i>Inula viscosa</i>	– (–)	– (–)	90 (2)	70 (1.4)	40 (0.8)	20 (0.4)	10 (0.2)	– (–)	– (–)	Compositae	CH	p	
<i>Lactuca serriola</i>	130 (2.8)	90 (4.2)	100 (2)	20 (0.4)	– (–)	– (–)	– (–)	– (–)	– (–)	Compositae	TH	b	OS
<i>Lathyrus aphaca</i> var. <i>pseudoaphaca</i>	– (–)	– (–)	– (–)	10 (0.2)	– (–)	– (–)	– (–)	– (–)	– (–)	Leguminosae	TH	a	OS
<i>Lathyrus sativus</i>	10 (0.2)	10 (0.2)	– (–)	– (–)	– (–)	– (–)	– (–)	– (–)	– (–)	Leguminosae	TH	a	OS
<i>Legousia falcata</i>	40 (0.8)	70 (7.4)	20 (0.4)	40 (0.8)	10 (0.2)	– (–)	– (–)	– (–)	20 (0.4)	Campanulaceae	TH	a	OS
<i>Lens ervoides</i>	30 (2.9)	10 (0.2)	80 (4.2)	– (–)	90 (2)	– (–)	– (–)	– (–)	50 (1.2)	Leguminosae	TH	a	OS
<i>Leontodon tuberosus</i>	30 (0.7)	– (–)	70 (1.4)	– (–)	– (–)	– (–)	10 (0.2)	– (–)	– (–)	Compositae	H	p	OR
<i>Lithodora hispidula</i>	40 (0.8)	70 (2.7)	– (–)	– (–)	10 (0.2)	– (–)	– (–)	70 (4.1)	20 (0.5)	Boraginaceae	CH	Wd	OR
<i>Lolium temulentum</i> var. <i>temulentum</i>	10 (0.2)	– (–)	– (–)	10 (0.2)	– (–)	– (–)	– (–)	– (–)	– (–)	Gramineae	TH	a	OS

Age No. of plots	1 10	2 10	3 10	4 10	7 10	12 10	20 10	40 10	Mature 10	Family	Raunkaier form	Life span	Regeneratio n form
<i>Lysimachia linum-stellatum</i>	– (–)	20 (0.4)	50 (1)	10 (0.2)	– (–)	– (–)	– (–)	– (–)	– (–)	Primulaceae	TH	a	DS
<i>Medicago disciformis</i>	– (–)	– (–)	10 (0.2)	– (–)	10 (0.2)	10 (0.2)	– (–)	– (–)	– (–)	Leguminosae	TH	a	OS
<i>Medicago minima</i> var. <i>minima</i>	30 (0.6)	30 (0.7)	20 (0.5)	60 (1.3)	60 (1.4)	50 (1.1)	– (–)	– (–)	– (–)	Leguminosae	TH	a	OS
<i>Medicago orbicularis</i>	30 (0.6)	10 (0.2)	40 (0.9)	– (–)	20 (0.4)	10 (0.2)	– (–)	– (–)	– (–)	Leguminosae	TH	a	OS
<i>Medicago polymorpha</i> var. <i>polymorpha</i>	– (–)	– (–)	10 (0.2)	– (–)	20 (0.4)	50 (2.3)	10 (0.2)	– (–)	– (–)	Leguminosae	TH	a	OS
<i>Melica minuta</i>	– (–)	– (–)	10 (0.2)	30 (0.9)	– (–)	– (–)	50 (2.4)	– (–)	– (–)	Gramineae	H	p	
<i>Melilotus indica</i>	90 (2.1)	20 (0.4)	50 (1)	50 (1.1)	40 (0.8)	20 (0.4)	10 (0.2)	– (–)	– (–)	Leguminosae	TH	a/b	OS
<i>Melilotus officinalis</i>	– (–)	– (–)	– (–)	40 (0.9)	10 (0.2)	– (–)	– (–)	– (–)	– (–)	Leguminosae	H,TH	a/b	OS
<i>Mentha aquatica</i>	– (–)	– (–)	– (–)	40 (0.8)	– (–)	– (–)	– (–)	– (–)	10 (0.2)	Labiatae	H	p	OR
<i>Micromeria myrtifolia</i>	40 (0.8)	10 (0.2)	– (–)	– (–)	10 (0.2)	10 (0.2)	20 (0.4)	– (–)	– (–)	Labiatae	CH	p	
<i>Minuartia mesogitana</i> ssp. <i>mesogitana</i>	– (–)	50 (1)	– (–)	30 (0.6)	– (–)	– (–)	– (–)	– (–)	– (–)	Caryophyllaceae	TH	a	OS
<i>Muscari comosum</i>	– (–)	– (–)	– (–)	– (–)	30 (0.6)	10 (0.2)	20 (0.4)	– (–)	– (–)	Liliaceae	G	p	OR
<i>Myosotis ramosissima</i> ssp. <i>ramosissima</i>	– (–)	– (–)	– (–)	10 (0.2)	– (–)	– (–)	– (–)	– (–)	20 (0.4)	Boraginaceae	TH	a	OS
<i>Myrtus communis</i> ssp. <i>communis</i>	100 (5.7)	80 (5.3)	90 (5.3)	100 (9.7)	90 (2.5)	100 (22)	90 (16)	100 (19)	100 (23)	Myrtaceae	PH	Wd	OR
<i>Oenanthe prolifera</i>	40 (2.2)	– (–)	– (–)	– (–)	– (–)	– (–)	10 (0.2)	– (–)	– (–)	Umbelliferae	CH	p	
<i>Olea europaea</i> var. <i>sylvestris</i>	– (–)	70 (1.4)	– (–)	– (–)	10 (0.2)	20 (0.5)	10 (0.2)	10 (0.2)	– (–)	Oleaceae	PH	Wd	OR

Age No. of plots	1 10	2 10	3 10	4 10	7 10	12 10	20 10	40 10	Mature 10	Family	Raunkaier form	Life span	Regeneratio n form
<i>Onobrychis caput-galli</i>	10 (0.2)	– (–)	60 (1.3)	– (–)	– (–)	– (–)	– (–)	– (–)	– (–)	Leguminosae	TH	a	OS
<i>Ononis</i> sp.	80 (1.9)	30 (0.6)	– (–)	10 (0.2)	30 (0.6)	20 (0.4)	– (–)	– (–)	20 (0.4)	Leguminosae			
<i>Ophrys vernixia</i> ssp. <i>vernixia</i>	– (–)	– (–)	– (–)	– (–)	10 (0.2)	10 (0.2)	10 (0.2)	– (–)	– (–)	Orchidaceae	G	p	OR
<i>Ornithogalum lanceolatum</i>	10 (0.2)	50 (1)	30 (0.6)	– (–)	20 (0.4)	– (–)	– (–)	– (–)	– (–)	Liliaceae	G	p	OR
<i>Ornithogalum orthophyllum</i>	– (–)	20 (0.4)	– (–)	10 (0.2)	– (–)	– (–)	– (–)	– (–)	– (–)	Liliaceae	G	p	OR
<i>Ornithopus compressus</i>	– (–)	– (–)	80 (1.8)	– (–)	10 (0.2)	– (–)	– (–)	– (–)	– (–)	Leguminosae	TH	a	OS
<i>Osyris alba</i>	10 (0.2)	– (–)	– (–)	– (–)	– (–)	– (–)	– (–)	– (–)	– (–)	Santalaceae	CH	Wd	OR
<i>Paliurus spina-christi</i>	– (–)	10 (0.2)	– (–)	10 (0.3)	– (–)	– (–)	– (–)	– (–)	– (–)	Rhamnaceae	PH	Wd	OR
<i>Pallenis spinosa</i>	20 (0.4)	– (–)	– (–)	– (–)	– (–)	– (–)	– (–)	– (–)	– (–)	Compositae	H	a	OR
<i>Phillyrea latifolia</i>	80 (2)	50 (1.3)	80 (2.1)	50 (1.4)	90 (2.5)	90 (2.9)	70 (4.6)	100 (7.1)	40 (1)	Oleaceae	PH	Wd	OR
<i>Phlomis grandiflora</i> var. <i>grandiflora</i>	– (–)	– (–)	60 (1.4)	– (–)	– (–)	– (–)	– (–)	– (–)	– (–)	Labiatae	PH	Wd	OR
<i>Phlomis lunariifolia</i>	– (–)	50 (1.3)	– (–)	20 (0.4)	40 (0.8)	10 (0.2)	80 (2)	– (–)	40 (0.8)	Labiatae	PH	Wd	OR
<i>Phlomis lycia</i>	100 (5.6)	– (–)	– (–)	– (–)	– (–)	– (–)	– (–)	20 (0.4)	– (–)	Labiatae	PH	Wd	OR
<i>Pinus brutia</i>	100 (3.8)	100 (5.5)	100 (3.6)	100 (15)	100 (30)	100 (27)	100 (61)	100 (62)	100 (80)	Pinaceae	PH	Wd	OS
<i>Piptatherum coerulescens</i>	10 (0.2)	– (–)	– (–)	– (–)	10 (0.2)	20 (0.4)	50 (1.4)	– (–)	50 (1.2)	Gramineae	H	p	OR
<i>Piptatherum miliaceum</i> ssp. <i>thomasi</i>	40 (0.9)	60 (2.4)	90 (15)	100 (2.8)	40 (0.9)	– (–)	– (–)	20 (0.4)	40 (0.8)	Gramineae	H	p	OR

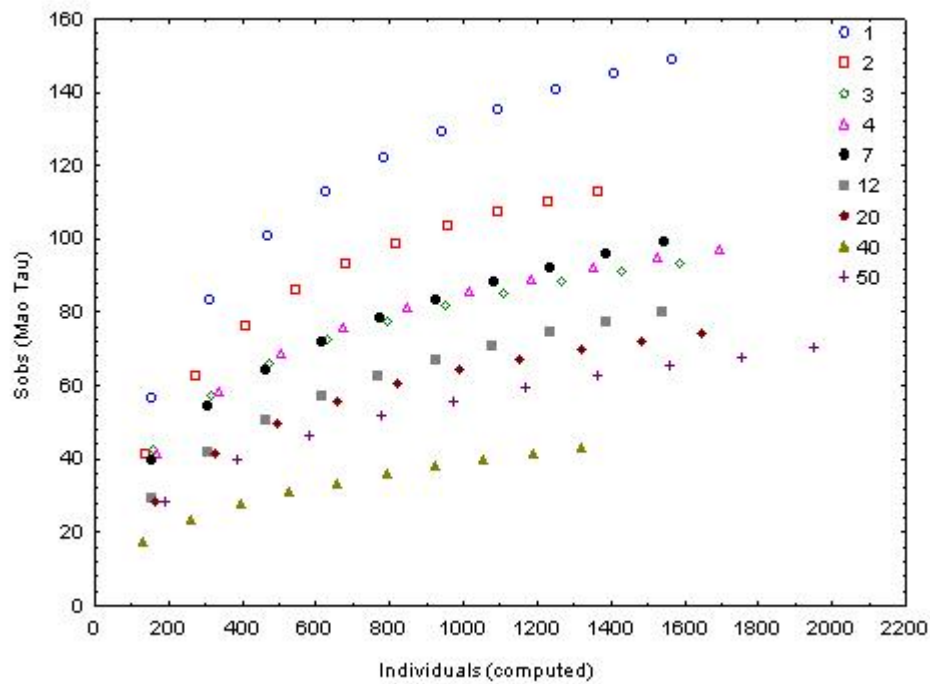


Age No. of plots	1 10	2 10	3 10	4 10	7 10	12 10	20 10	40 10	Mature 10	Family	Raunkaier form	Life span	Regeneratio n form
<i>Pistacia terebinthus</i> ssp. <i>palaestina</i>	90 (3.1)	50 (1.2)	10 (0.2)	60 (1.4)	90 (2.1)	30 (0.6)	60 (3.1)	70 (1.4)	60 (1.5)	Anacardiaceae	PH	Wd	OR
<i>Poa annua</i>	10 (0.2)	– (–)	– (–)	10 (0.2)	– (–)	– (–)	– (–)	– (–)	– (–)	Gramineae	TH	a	C
<i>Psoralea bituminosa</i>	70 (1.4)	– (–)	– (–)	– (–)	10 (0.2)	– (–)	– (–)	– (–)	– (–)	Leguminosae	PH	Wd	OR
<i>Pyrus communis</i> ssp. <i>communis</i>	– (–)	– (–)	– (–)	– (–)	20 (0.4)	– (–)	10 (0.2)	– (–)	– (–)	Rosaceae	PH	Wd	OR
<i>Quercus coccifera</i>	100 (2.6)	100 (6.8)	100 (2.6)	100 (4.2)	100 (7.7)	40 (1)	20 (0.7)	100 (3.4)	100 (2.9)	Fagaceae	PH	Wd	OR
<i>Quercus infectoria</i> ssp. <i>boissieri</i>	100 (2.2)	30 (0.6)	10 (0.2)	20 (0.5)	70 (1.5)	– (–)	100 (11)	30 (0.6)	70 (1.5)	Fagaceae	PH	Wd	OR
<i>Rhamnus pichleri</i>	30 (0.6)	40 (0.8)	100 (2)	20 (0.4)	40 (0.9)	– (–)	– (–)	10 (0.2)	10 (0.2)	Rhamnaceae	PH	Wd	OR
<i>Romulea tempskyana</i>	– (–)	10 (0.2)	– (–)	– (–)	– (–)	– (–)	– (–)	– (–)	– (–)	Iridaceae	G	p	OR
<i>Rostraria cristata</i> var. <i>cristata</i>	– (–)	20 (0.5)	20 (0.4)	50 (1)	– (–)	10 (0.2)	– (–)	– (–)	– (–)	Gramineae	TH	a	C
<i>Rubia tenuifolia</i> ssp. <i>doniittii</i>	40 (2.2)	– (–)	– (–)	– (–)	– (–)	– (–)	20 (0.4)	– (–)	10 (0.2)	Rubiaceae	PH	Wd	OR
<i>Ruscus aculeatus</i> var. <i>angustifolius</i>	80 (2.9)	40 (0.8)	– (–)	10 (0.2)	30 (0.6)	10 (0.2)	20 (0.4)	– (–)	20 (0.4)	Iridaceae	CH	Wd	OR
<i>Sagina maritima</i>	10 (0.2)	– (–)	– (–)	40 (0.8)	– (–)	10 (0.3)	– (–)	– (–)	– (–)	Caryophyllaceae	TH	a	OS
<i>Salvia tomentosa</i>	– (–)	20 (0.5)	– (–)	– (–)	10 (0.2)	60 (1.3)	40 (0.8)	50 (1.1)	50 (1.1)	Labiatae	CH	p	
<i>Sarcopoterium spinosum</i>	10 (0.2)	– (–)	– (–)	– (–)	– (–)	– (–)	– (–)	– (–)	– (–)	Rosaceae	CH	Wd	FS
<i>Scorpiurus muricatus</i> var. <i>subvillosus</i>	50 (1)	10 (0.2)	10 (0.2)	10 (0.2)	30 (0.6)	– (–)	– (–)	– (–)	10 (0.2)	Leguminosae	TH	a	OS
<i>Scorzonera elata</i>	70 (1.6)	– (–)	10 (0.2)	– (–)	– (–)	– (–)	– (–)	– (–)	– (–)	Compositae	G	p	OR

Age No. of plots	1 10	2 10	3 10	4 10	7 10	12 10	20 10	40 10	Mature 10	Family	Raunkaier form	Life span	Regeneratio n form
<i>Securigera securidaca</i>	100 (7.9)	50 (1.2)	20 (0.6)	60 (1.2)	80 (1.6)	50 (1)	50 (1)	– (–)	– (–)	Leguminosae	TH	a	OS
<i>Senecio vernalis</i>	10 (0.2)	30 (0.6)	– (–)	– (–)	– (–)	– (–)	– (–)	– (–)	10 (0.2)	Compositae	TH	a	OS
<i>Senecio vulgaris</i>	– (–)	20 (0.4)	30 (0.6)	40 (0.8)	– (–)	– (–)	– (–)	– (–)	– (–)	Compositae	TH	a	OS
<i>Sherardia arvensis</i>	30 (0.6)	– (–)	– (–)	20 (0.4)	80 (2.1)	30 (0.8)	– (–)	– (–)	10 (0.2)	Rubiaceae	TH	a	OS
<i>Sinapis arvensis</i>	– (–)	10 (0.2)	10 (0.2)	– (–)	– (–)	– (–)	– (–)	– (–)	– (–)	Cruciferae	TH	a	OS
<i>Smilax aspera</i>	80 (1.9)	60 (1.2)	60 (1.2)	90 (1.9)	90 (1.8)	100 (3.5)	100 (2.7)	100 (3.1)	100 (3.4)	Smilacaceae	PH	Wd	OR
<i>Sonchus asper</i> ssp. <i>glaucescens</i>	30 (0.6)	50 (2.3)	60 (1.2)	– (–)	20 (0.4)	– (–)	10 (0.2)	– (–)	10 (0.2)	Compositae	TH	a	OS
<i>Sonchus oleraceus</i>	50 (1)	50 (1)	– (–)	90 (1.9)	20 (0.4)	– (–)	– (–)	– (–)	– (–)	Compositae	TH	a	OS
<i>Sorghum halepense</i> var. <i>muticum</i>	10 (0.3)	– (–)	– (–)	– (–)	10 (0.2)	– (–)	10 (0.2)	20 (0.4)	– (–)	Gramineae	G	p	OR
<i>Spartium junceum</i>	– (–)	– (–)	– (–)	20 (0.6)	10 (0.2)	– (–)	– (–)	– (–)	– (–)	Leguminosae	PH	Wd	FR
<i>Stachys cretica</i> ssp. <i>anatolica</i>	– (–)	20 (0.4)	50 (1)	20 (0.4)	20 (0.4)	– (–)	– (–)	– (–)	– (–)	Labiatae	H	p	OR?
<i>Stipa bromoides</i>	10 (0.2)	60 (2.5)	100 (4.5)	80 (12)	40 (1)	20 (0.4)	40 (2)	60 (1.5)	100 (4.6)	Gramineae	H	p	
<i>Styrax officinalis</i>	40 (2.1)	– (–)	– (–)	– (–)	10 (0.2)	– (–)	50 (1.7)	– (–)	10 (0.2)	Styracaceae	PH	Wd	OR
<i>Tamus communis</i> ssp. <i>communis</i>	40 (0.8)	50 (1)	– (–)	– (–)	– (–)	– (–)	30 (0.7)	10 (0.2)	– (–)	Dioscoreaceae	G	p	OR
<i>Teucrium chamaedrys</i> ssp. <i>lydium</i>	10 (0.2)	30 (0.6)	10 (0.2)	10 (0.2)	– (–)	10 (0.2)	50 (1)	10 (0.2)	60 (1.2)	Labiatae	CH	p	OR?
<i>Teucrium polium</i>	20 (0.4)	20 (0.4)	20 (0.4)	10 (0.2)	40 (0.8)	10 (0.2)	10 (0.2)	10 (0.2)	20 (0.4)	Labiatae	CH	p	OR?

Age No. of plots	1 10	2 10	3 10	4 10	7 10	12 10	20 10	40 10	Mature 10	Family	Raunkiaer form	Life span	Regeneratio n form
<i>Theligonum cynocrambe</i>	50 (1)	70 (1.5)	– (–)	40 (0.8)	120 (2.4)	– (–)	– (–)	– (–)	40 (0.8)	Cynocrambaceae	TH	a	OS
<i>Thesium bergeri</i>	40 (0.8)	20 (0.4)	– (–)	– (–)	– (–)	– (–)	– (–)	– (–)	10 (0.2)	Santalaceae	H	p	OR
<i>Tordylium aegaeum</i>	– (–)	– (–)	10 (0.2)	– (–)	30 (0.6)	– (–)	– (–)	– (–)	– (–)	Umbelliferae	TH	a	OS
<i>Torilis arvensis</i> ssp. <i>arvensis</i>	– (–)	40 (0.8)	100 (2.1)	100 (6)	60 (1.2)	30 (0.7)	30 (1.7)	– (–)	70 (1.4)	Umbelliferae	TH	a	C
<i>Trachynia distachya</i>	– (–)	– (–)	– (–)	– (–)	20 (0.5)	– (–)	– (–)	– (–)	10 (0.2)	Gramineae	TH	a	OS
<i>Tragopogon longirostris</i> var. <i>longirostris</i>	20 (0.4)	– (–)	50 (1)	– (–)	10 (0.2)	– (–)	– (–)	– (–)	– (–)	Compositae	H	b	OR
<i>Trifolium arvense</i> var. <i>arvense</i>	– (–)	10 (0.3)	60 (1.4)	70 (1.6)	– (–)	40 (0.8)	20 (0.4)	– (–)	– (–)	Leguminosae	TH	a	OS
<i>Trifolium campestre</i>	70 (1.5)	20 (1.5)	120 (3.4)	20 (0.4)	30 (0.6)	– (–)	– (–)	– (–)	– (–)	Leguminosae	TH	a	OS
<i>Trifolium dubium</i>	10 (0.2)	40 (0.8)	– (–)	60 (1.4)	20 (0.4)	60 (1.5)	60 (1.2)	– (–)	– (–)	Leguminosae	H,TH	a	OS
<i>Trifolium hirtum</i>	20 (0.5)	10 (0.2)	80 (2)	70 (1.4)	10 (0.2)	10 (0.2)	– (–)	– (–)	– (–)	Leguminosae	TH	a	OS
<i>Trifolium lappaceum</i>	90 (2)	40 (0.8)	– (–)	60 (1.4)	50 (1)	70 (1.6)	20 (0.4)	10 (0.2)	– (–)	Leguminosae	TH	a	OS
<i>Trifolium nigrescens</i> ssp. <i>petrisavii</i>	60 (1.2)	20 (0.4)	100 (5.7)	50 (1.3)	10 (0.2)	– (–)	– (–)	– (–)	– (–)	Leguminosae	TH	a	OS
<i>Trifolium pratense</i> var. <i>pratense</i>	– (–)	– (–)	120 (2.7)	– (–)	– (–)	20 (0.5)	– (–)	– (–)	– (–)	Leguminosae	H	p	OS
<i>Trifolium resupinatum</i> var. <i>resupinatum</i>	50 (1)	– (–)	20 (0.4)	40 (0.8)	– (–)	– (–)	– (–)	– (–)	– (–)	Leguminosae	TH	a	OS
<i>Trifolium spumosum</i>	10 (0.2)	– (–)	10 (0.2)	– (–)	– (–)	– (–)	– (–)	– (–)	– (–)	Leguminosae	TH	a	OS
<i>Trigonella monspeliaca</i>	– (–)	30 (0.6)	20 (0.4)	– (–)	– (–)	– (–)	– (–)	– (–)	– (–)	Leguminosae	TH	a	OS

Age No. of plots	1 10	2 10	3 10	4 10	7 10	12 10	20 10	40 10	Mature 10	Family	Raunkaier form	Life span	Regeneratio n form
<i>Urginea maritima</i>	10 (0.2)	40 (0.8)	60 (1.2)	60 (1.2)	90 (1.8)	10 (0.2)	50 (1)	– (–)	80 (1.7)	Liliaceae	G	p	OR
<i>Urospermum picroides</i>	20 (0.4)	60 (1.4)	80 (1.7)	90 (1.8)	50 (1)	40 (0.9)	50 (1.5)	– (–)	60 (1.2)	Compositae	TH	a	OS
<i>Verbascum sinuatum</i> var. <i>adenosepalum</i>	30 (0.6)	– (–)	90 (2.4)	50 (1.1)	– (–)	– (–)	– (–)	– (–)	– (–)	Scrophulariaceae	H	b	
<i>Veronica arvensis</i>	60 (1.2)	40 (0.9)	20 (0.4)	20 (0.4)	10 (0.2)	10 (0.2)	– (–)	– (–)	– (–)	Scrophulariaceae	TH	a	OS
<i>Veronica persica</i>	50 (1.1)	10 (0.2)	– (–)	10 (0.2)	– (–)	20 (0.4)	– (–)	– (–)	– (–)	Scrophulariaceae	TH	p	OS
<i>Vicia cracca</i> ssp. <i>cracca</i>	– (–)	– (–)	– (–)	– (–)	10 (0.2)	100 (2.7)	40 (0.9)	– (–)	– (–)	Leguminosae	H	p	OS
<i>Vicia meyeri</i>	– (–)	30 (1.9)	60 (1.5)	50 (1)	50 (1.2)	50 (1)	30 (0.6)	– (–)	60 (1.2)	Leguminosae	TH	a	OS
<i>Vicia sativa</i> ssp. <i>nigra</i> var. <i>nigra</i>	– (–)	10 (0.2)	20 (0.4)	30 (0.6)	– (–)	– (–)	– (–)	– (–)	– (–)	Leguminosae	TH	a	OS
<i>Vitis sylvestris</i>	– (–)	– (–)	– (–)	– (–)	– (–)	10 (0.2)	– (–)	30 (0.6)	10 (0.2)	Vitaceae	PH	Wd	OR
<i>Vitis vinifera</i>	– (–)	– (–)	– (–)	10 (0.2)	10 (0.2)	– (–)	– (–)	– (–)	– (–)	Vitaceae	PH	Wd	OR



**Fig. A1.** Mao Tau rarefaction curves in each post-fire regeneration stage.