

Supplementary material

Effect of heterogeneity in burn severity on Mexican fox squirrels following the return of fire

Sandra L. Doumas^{A,B} and John L. Koprowski^A

^ASchool of Natural Resources and the Environment, The University of Arizona, 325 Biological Sciences East, Tucson, AZ 85721 United States.

^BCorresponding author. Email: sdoumas@email.arizona.edu

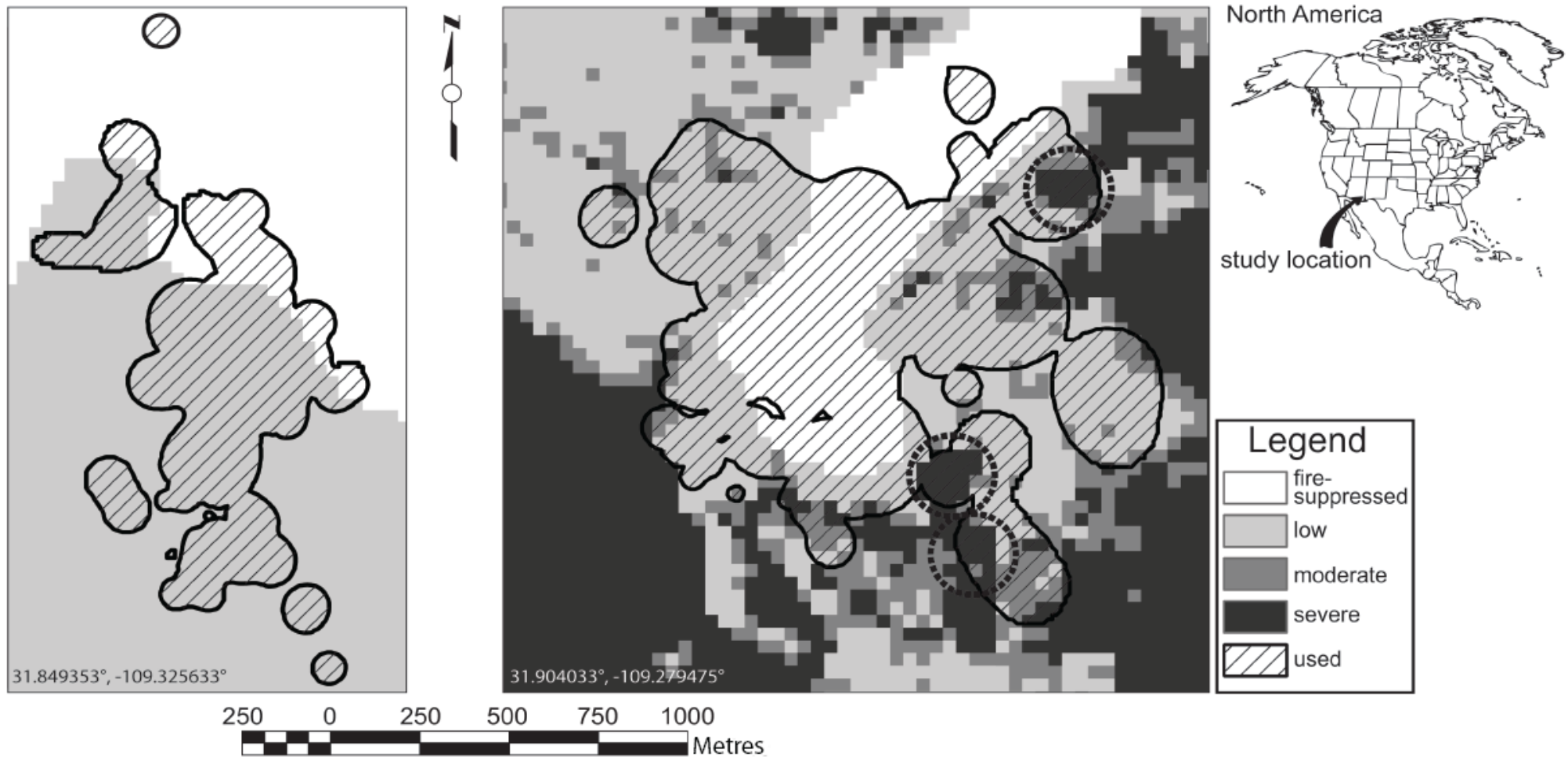


Fig. S1. Study area burned by prescribed fire (left) was more homogeneous in burn severity than study area burned by wildfire (right). Home ranges of Mexican fox squirrels (*Sciurus nayaritensis chiricahuae*) in the Chiricahua Mountains, Cochise Co., Arizona are outlined (adjacent ranges merged into one shape). Squirrels used severe burn at patch edges or where a narrow band extended into low-severity burn (dashed circles).