

## Supplementary Material

### **Relating fuel loads to overstory structure and composition in a fire-excluded Sierra Nevada mixed-conifer forest**

*Jamie M. Lydersen<sup>A,E</sup>, Brandon M. Collins<sup>A,B</sup>, Eric E. Knapp<sup>C</sup>, Gary B. Roller<sup>D</sup> and Scott Stephens<sup>D</sup>*

<sup>A</sup>USDA Forest Service, Pacific Southwest Research Station, 1731 Research Park Dr., Davis, CA 95618, USA.

<sup>B</sup>Center for Fire Research and Outreach, College of Natural Resources, University of California, Berkeley, USA.

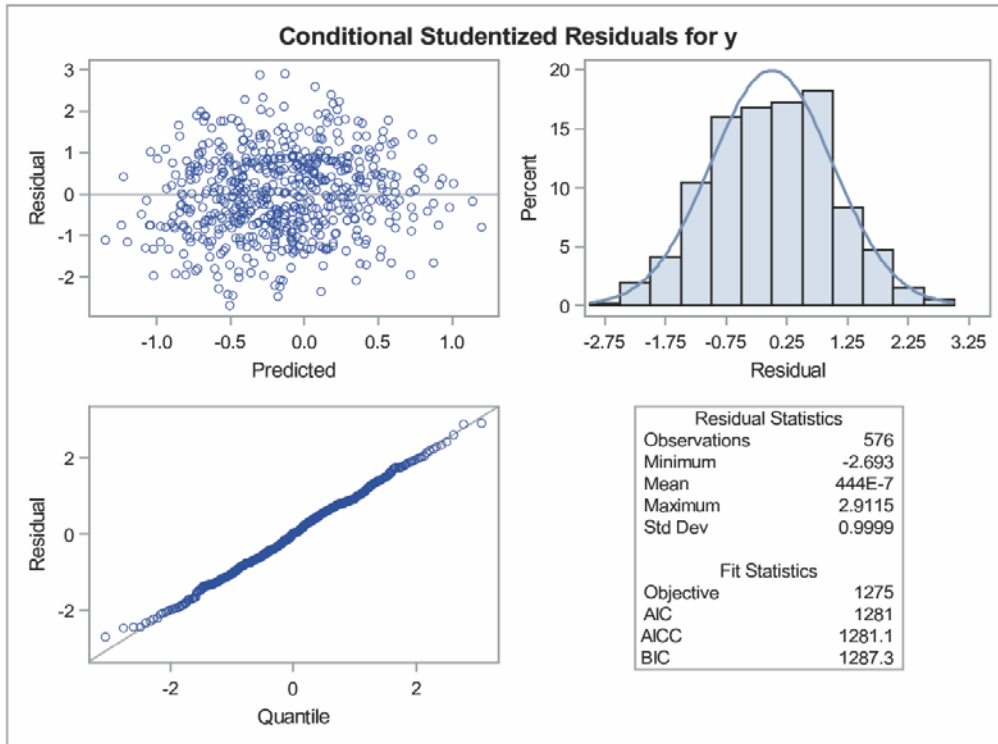
<sup>C</sup>USDA Forest Service, Pacific Southwest Research Station, 3644 Avtech Parkway, Redding, CA 96002, USA.

<sup>D</sup>Department of Environmental Science, Policy and Management, University of California, Berkeley, 130 Mulford Hall, MC#3114, Berkeley, CA 94720, USA.

<sup>E</sup>Corresponding author. Email: [jmlydersen@fs.fed.us](mailto:jmlydersen@fs.fed.us)

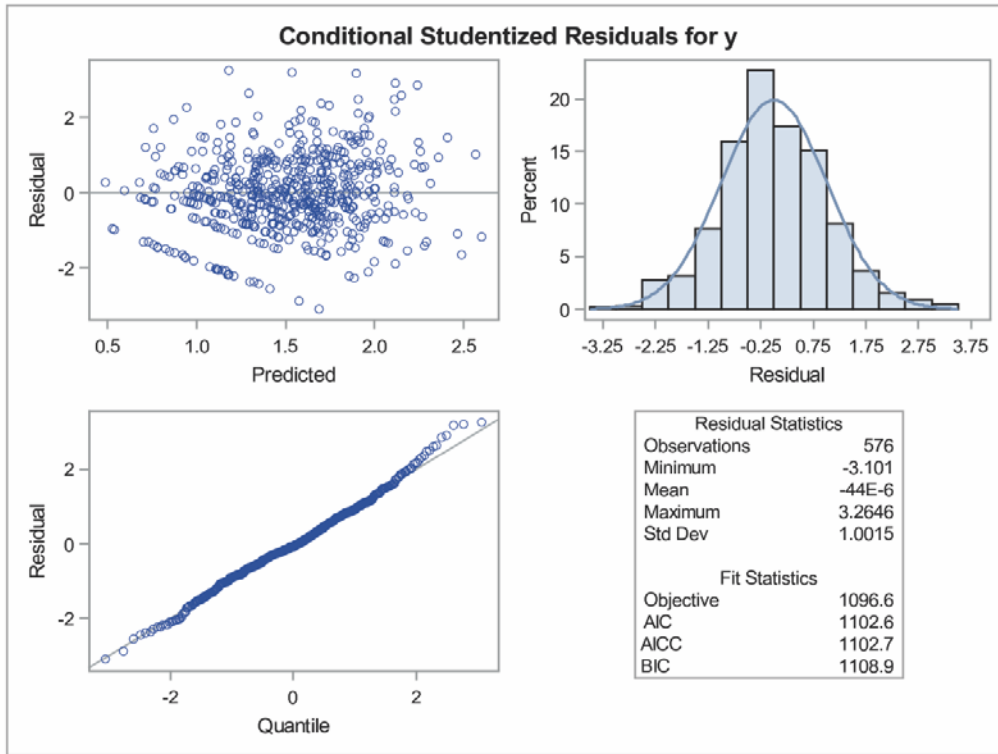
$\log(\text{OneHour} + 0.1) = \text{CC\_ABCO} \text{BAlive\_pine} \text{BA\_liveTot}$

The Mixed Procedure



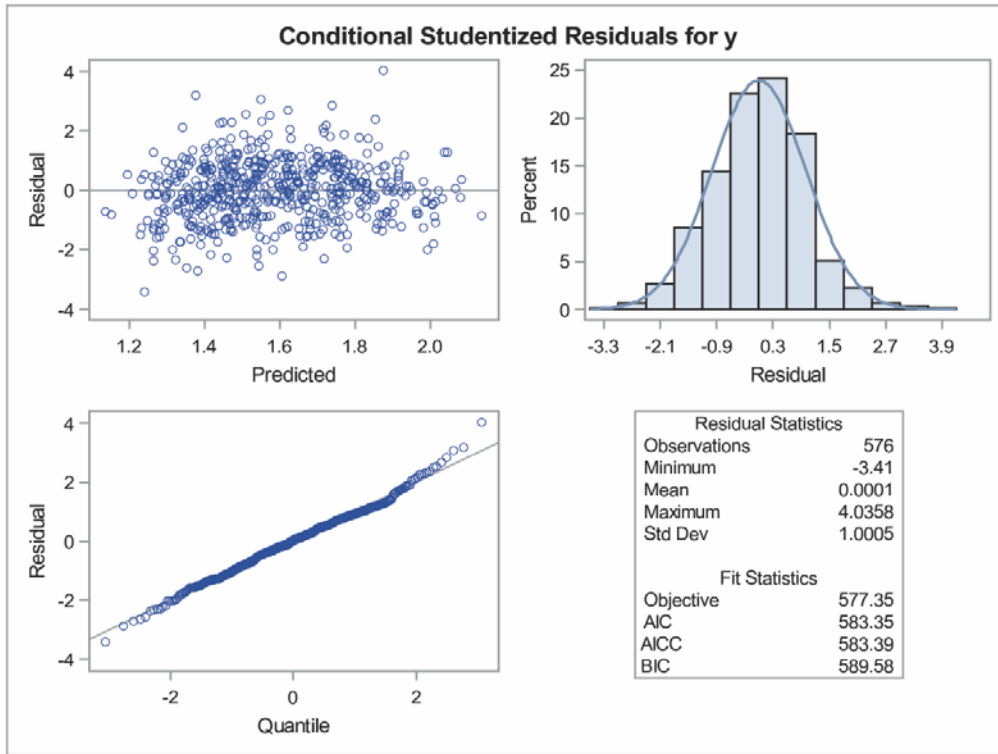
$(\text{TenHour} + 0)**0.4 = \text{CC\_tot BA\_live\_pine BA\_liveTot}$

The Mixed Procedure



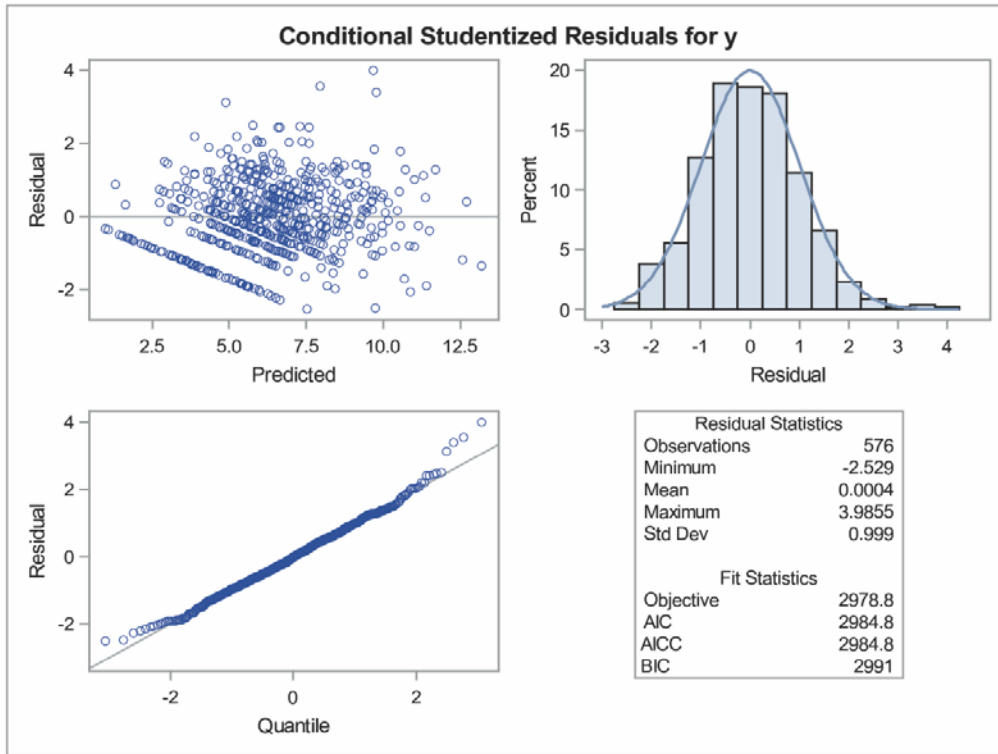
$(\text{One2HundredHour} + 0)**0.25 = \text{CC\_ABCO BAlive\_fir BA\_deadTot}$

The Mixed Procedure



$$(Duff + 0)**0.58 = CC\_tot BA\_liveTot BA\_deadTot$$

The Mixed Procedure



$$(Litter + 0)^{0.4} = CC\_tot \quad CC\_pine \quad BA\_deadTot$$

The Mixed Procedure

