
Supplementary material

Bandicoots return to Booderee: initial survival, dispersal, home range and habitat preferences of reintroduced southern brown bandicoots (eastern sub species; *Isoodon obesulus obesulus*)

N. M. Robinson^{A,B,E}, *C. I. MacGregor*^A, *B. A. Hradsky*^{B,C}, *N. Dexter*^D and *D. B. Lindenmayer*^{A,B}

^AFenner School of Environment and Society, The Australian National University, Canberra, ACT 2601, Australia.

^BThe National Environmental Science Program, Threatened Species Recovery Hub, The University of Queensland, St Lucia, QLD 4072, Australia.

^CSchool of BioSciences, University of Melbourne, VIC 3010, Australia.

^DBooderee National Park, Village Road, Jervis Bay, Jervis Bay Territory 2540, Australia.

^ECorresponding author. Email: natasha.robinson@anu.edu.au

Supplementary Material

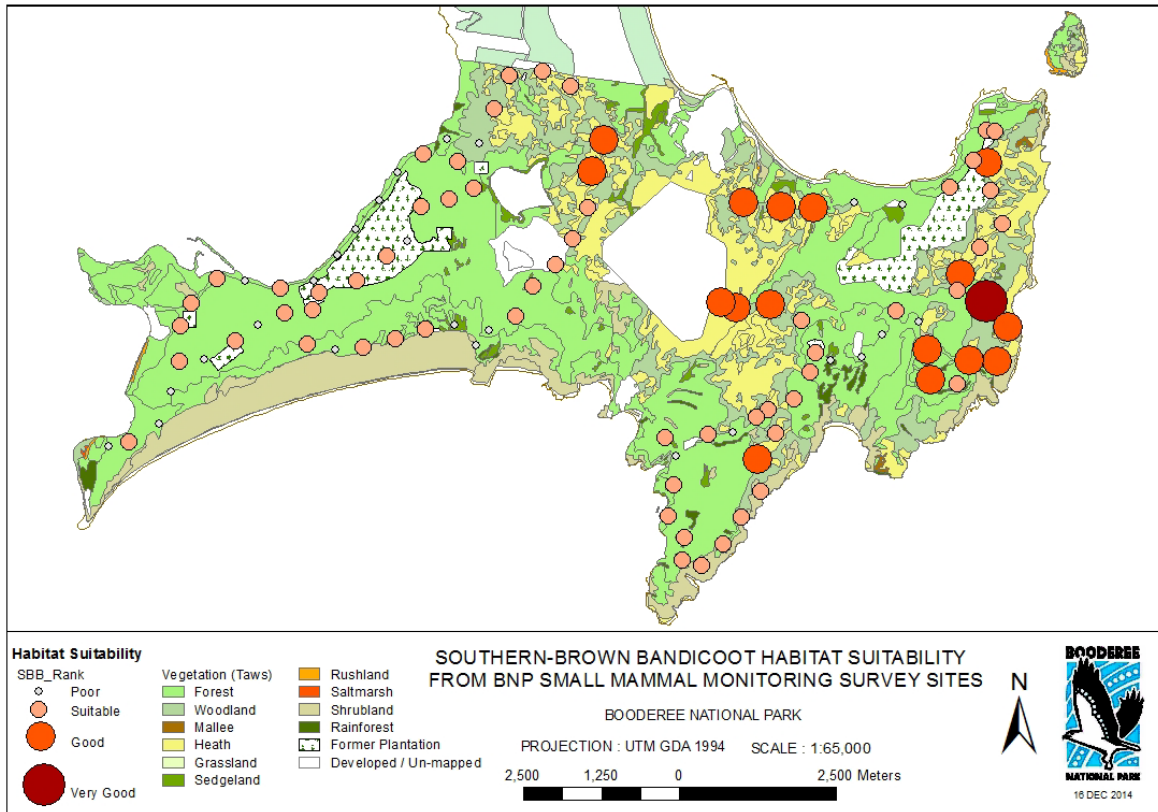


Fig. S1. Habitat suitability scores for southern brown bandicoots throughout Booderee National Park (BNP).

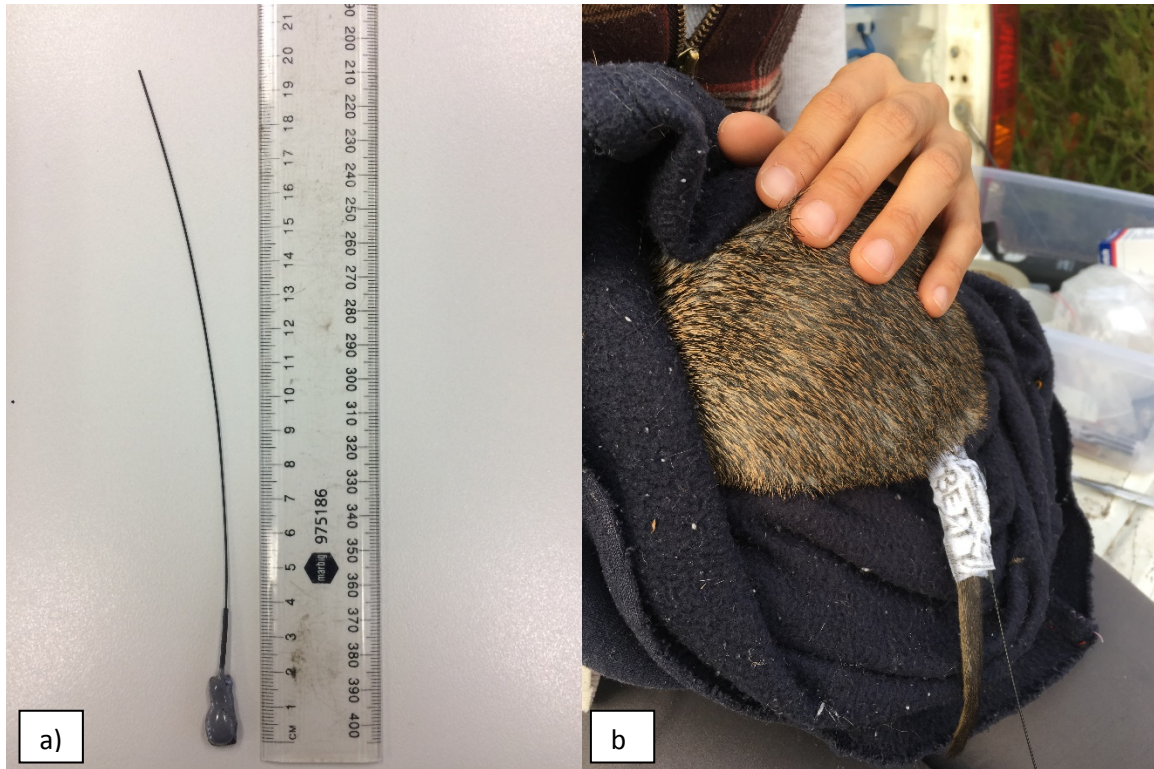


Fig. S2. Photos of (a) radio transmitter and (b) transmitter attached to the tail of a bandicoot using 5 cm Fixomull stretch tape. Radio transmitter specifications are Holohil Systems BD-2, 1.9 g, $20 \times 9 \times 6.6$ mm, 180 mm whip antennae, 151–152 MHz, 10-week battery life and no mortality signal.

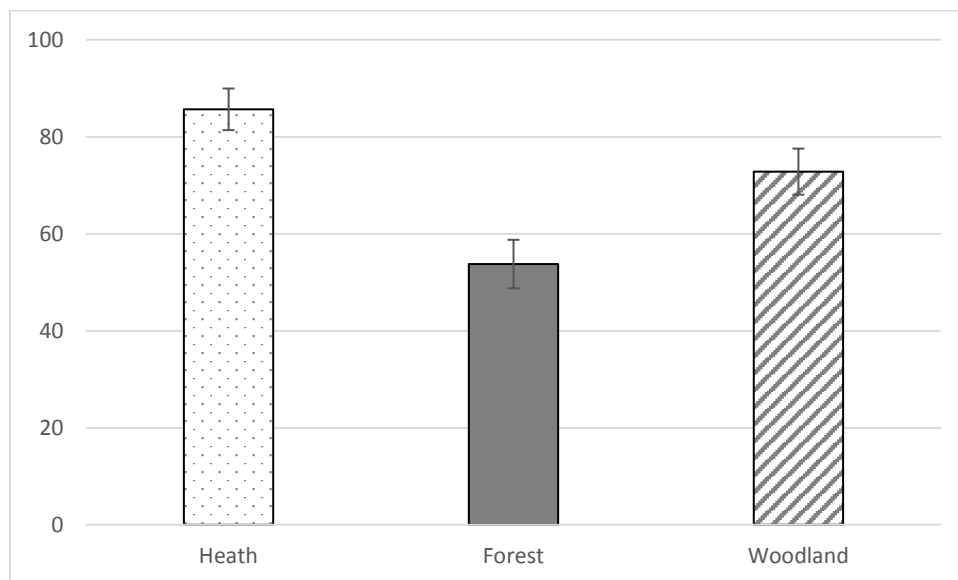


Fig. S3. Percentage ground cover of heath, forest and woodland at the release area, Booderee National Park. Error bars are 95% confidence intervals.

Table S1. Baseline average measurements of male and female reintroduced bandicoots, with standard deviation.

Sex	Number	Weight (g)	Head length (mm)	Pes length (mm)	Ear length (mm)
Male	5	1221.8 (271.5)	87.7 (9.4)	62.8 (2.8)	33.8 (1.5)
Female	6	726.7 (226.1)	77.7 (6.4)	56.6 (3.0)	31.8 (3.0)

Table S2. Summary of release variables, dispersal, home range, nests and post-release observations (6 months) for reintroduced Southern Brown Bandicoots.

Source locations are Nadgee State Forest (NSF), Timbillica State Forest (TSF) and East Boyd State Forest (EBSF). Sex is male (M) or female (F). Release vegetation types are forest (F), heath (H) and woodland (W). PY = Pouch Young.

Name	Source location	Sex	Pre-release weight (g)	Release order	Release vegetation	Dispersal distance (m)	Home range size (ha) [no. of locations]	No. of recorded nests	Post-release weight (g)	Post - release breeding
Clyde	NSF	M	1110	1	F	604.1	10.1 [82]	2	n/a	n/a
Kanye	NSF	M	1240	2	F	336.5	0.7 [53]	1	1130	n/a
Dora	NSF	F	503	3	W	391.9	5.9 [52]	n/a	n/a	n/a
Wally	NSF	M	1175	4	H	989.6	26.4 [51]	2	1210	n/a
Charlotte	NSF	F	442	5	H	327.6	2.6 [84]	1	n/a	n/a
Betty	NSF	F	979	6	H	243.5	4.2 [63]	3	960	3 PY
Max	NSF	M	1418	7	W	587.1	8.5 [52]	n/a	1460	n/a
KimK	NSF	F	667	8	W	202.7	2.9 [39]	1	750	4 PY
Wanda	NSF	F	823	9	W	412.0	6.3 [28]	n/a	830	3 PY
Bonnie	NSF	F	946	10	H	413.5	5.9 [54]	3	890	3 PY
Ned	NSF	M	798	11	H	1002.9	30.4 [34]	2	n/a	n/a

Table S3. Tests of differences in percentage ground cover of the major vegetation types at the release area, Booderee National Park.

	t	p	df
Heath v. forest	9.48	<0.001	115
Woodland v. forest	5.41	<0.001	122
Woodland v. heath	3.9	<0.001	82