

10.1071/CH13334\_AC

©CSIRO 2014

Australian Journal of Chemistry 2014, 67(1), 127-133

## Supplementary Material

### **Complex Micelles with Glucose-Responsive Shells for Self-regulated Release of Glibenclamide**

Rujiang Ma, Xiaocheng Sun, Xiaojun Liu, Yingli An, Linqi Shi\*

Key Laboratory of Functional Polymer Materials, Ministry of Education, and Institute  
of Polymer Chemistry, Nankai University, Tianjin 300071, China

\*Email: [shilinqi@nankai.edu.cn](mailto:shilinqi@nankai.edu.cn)

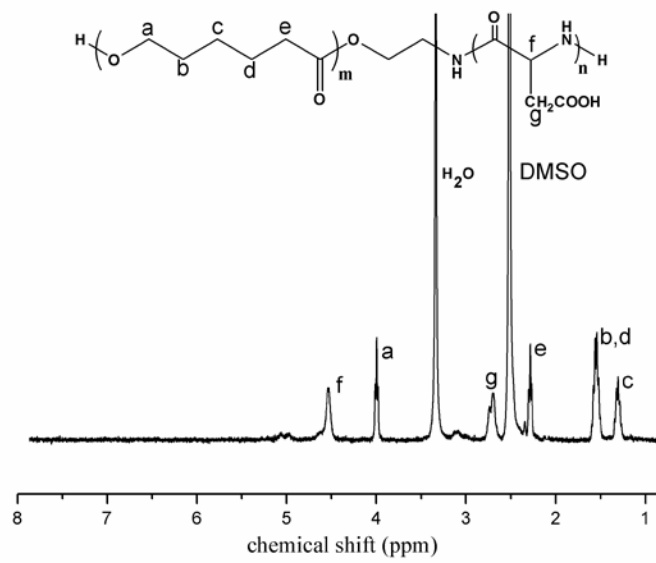


Figure S1. <sup>1</sup>H NMR spectra of PCL-*b*-PAsp in DMSO-*d*<sub>6</sub>

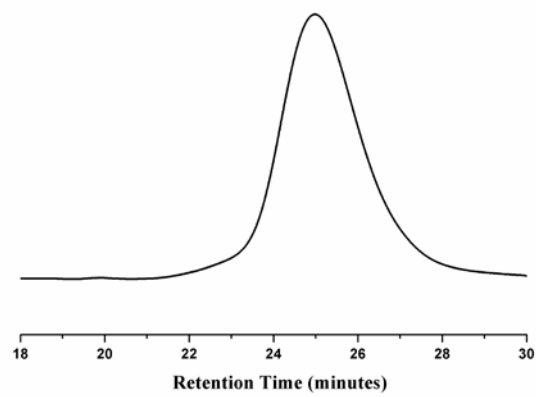


Figure S2. GPC trace of PCL-*b*-PAsp in DMF at room temperature.

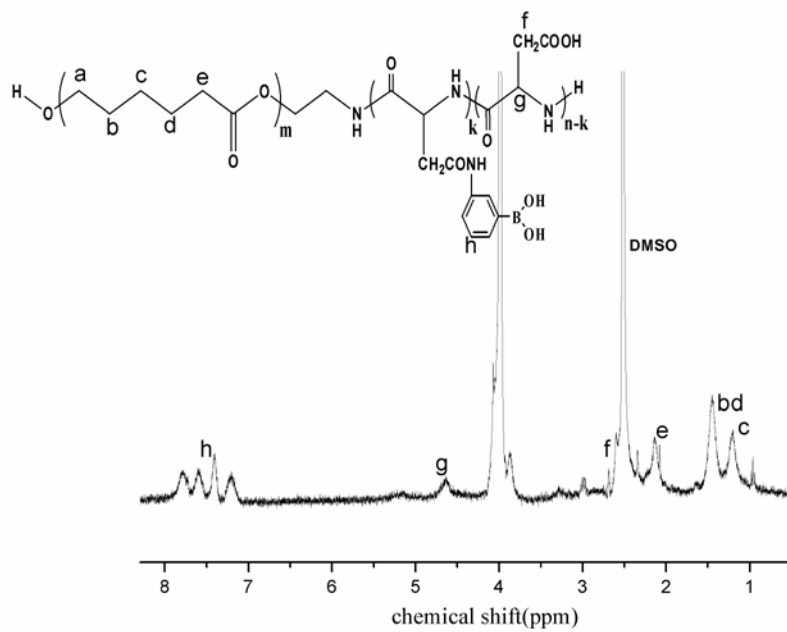


Figure S3.  $^1\text{H}$  NMR spectra of PCL-*b*-P(Asp-*co*-AspPBA) in  $\text{DMSO-}d_6$

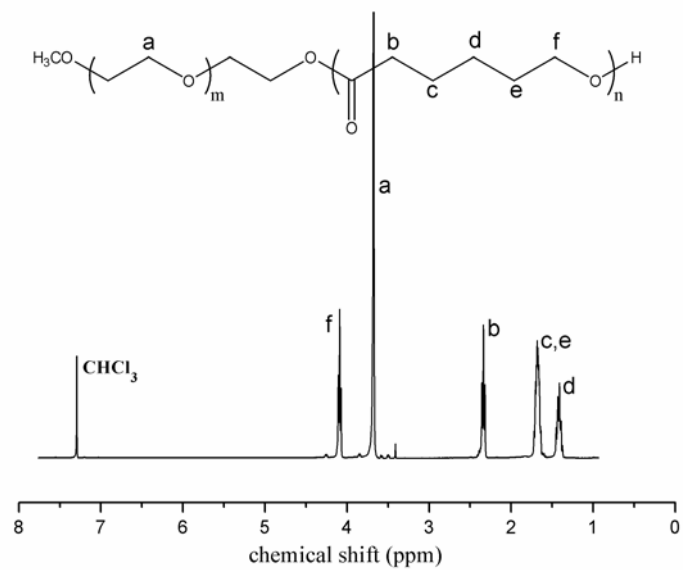


Figure S4.  $^1\text{H}$  NMR spectra of PEG-*b*-PCL in  $\text{CDCl}_3$ .

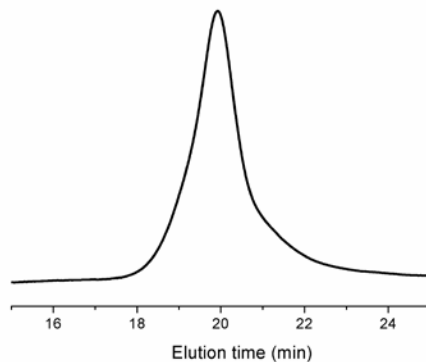


Figure S5. GPC trace of PEG-*b*-PCL in THF at room temperature.

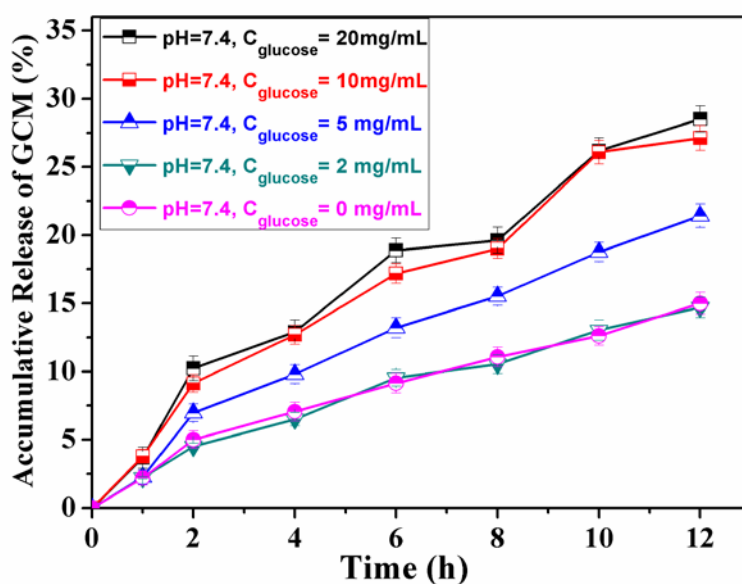


Figure S6. Release profiles of GCM from PEG-*b*-PCL/PCL-*b*-P(Asp-*co*-AspPBA) (PEG/P(Asp-*co*-AspPBA), 3/7, mol/mol) complex micelles under different glucose concentrations at pH 7.4 at 37 °C.