

Supplementary Material

Annulation of Eight- to Ten-membered Oxaza Rings to the Benzo[*b*]thiophene System via Intramolecular Nucleophilic Displacement

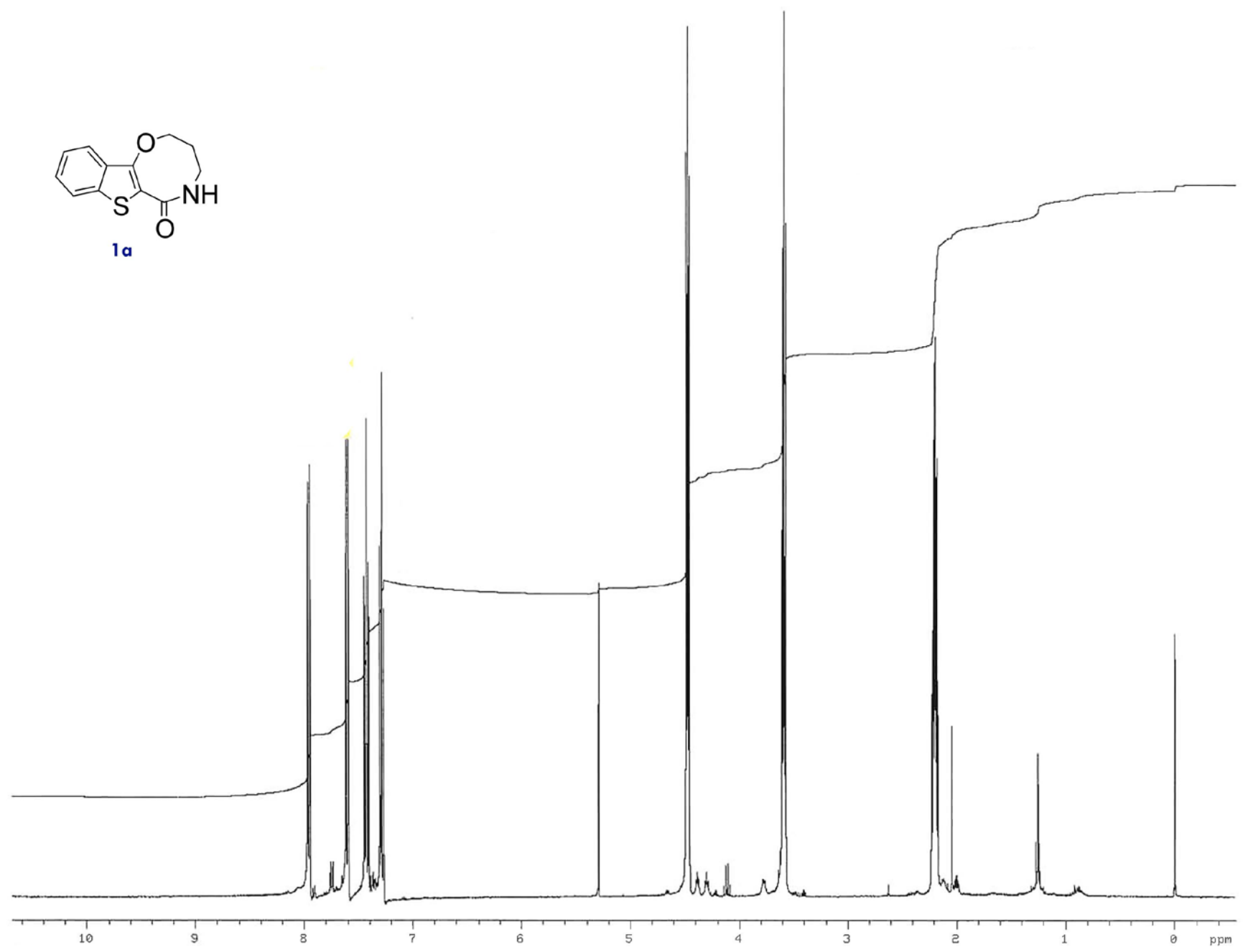
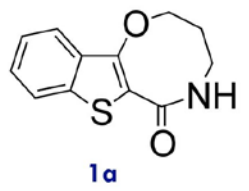
John B. Bremner,^{A,B} and Zemin Wu^{A,}*

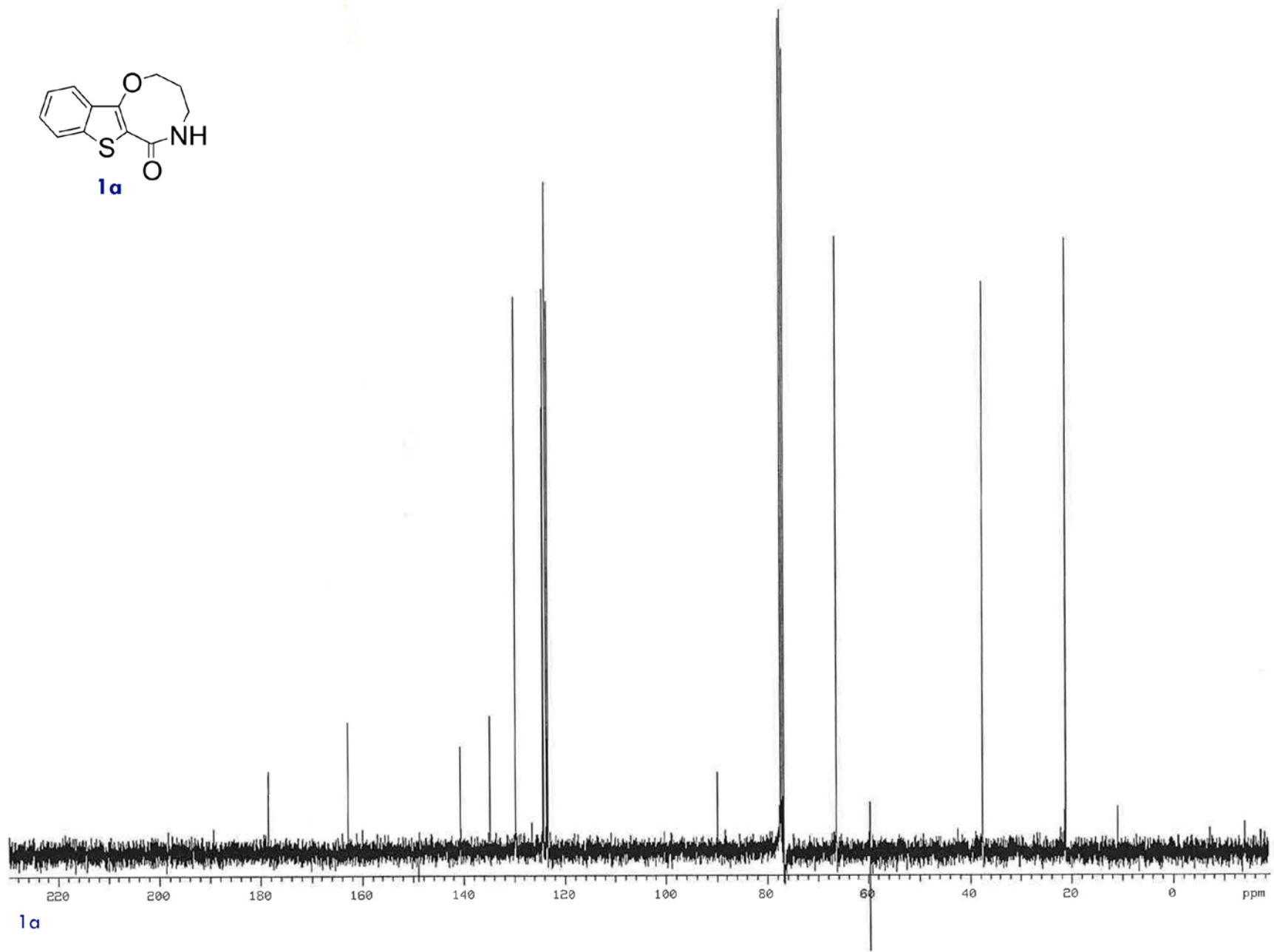
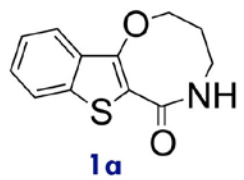
^ASchool of Chemistry, University of Wollongong, Wollongong, NSW 2522, Australia

^BCorresponding author. Email: john_bremner@uow.edu.au

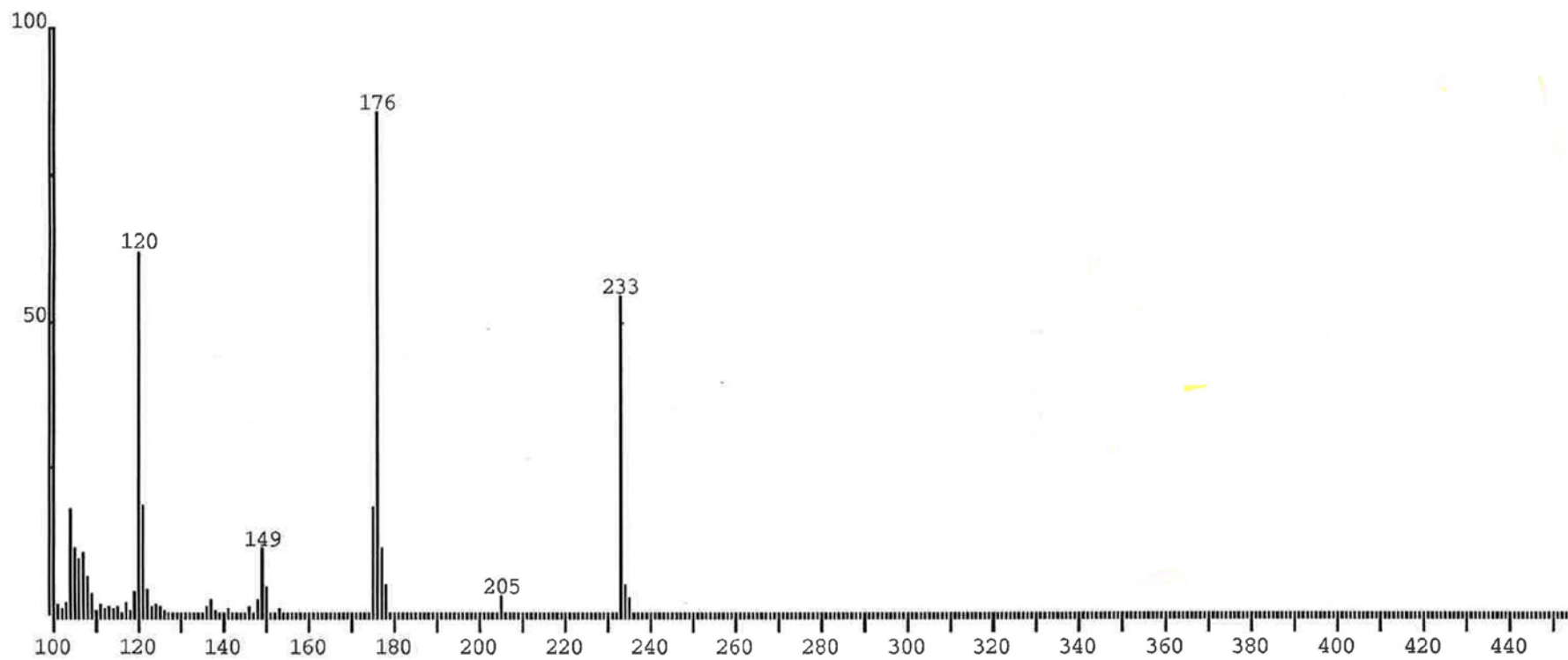
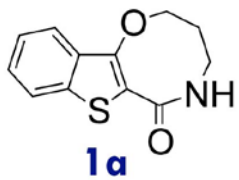
*Present address: Avipep Pty Ltd, 343 Royal Parade, Parkville, Vic., 3052, Australia

NMR and Mass Spectra of compounds 1a-c, 6a-f, and 7a-c

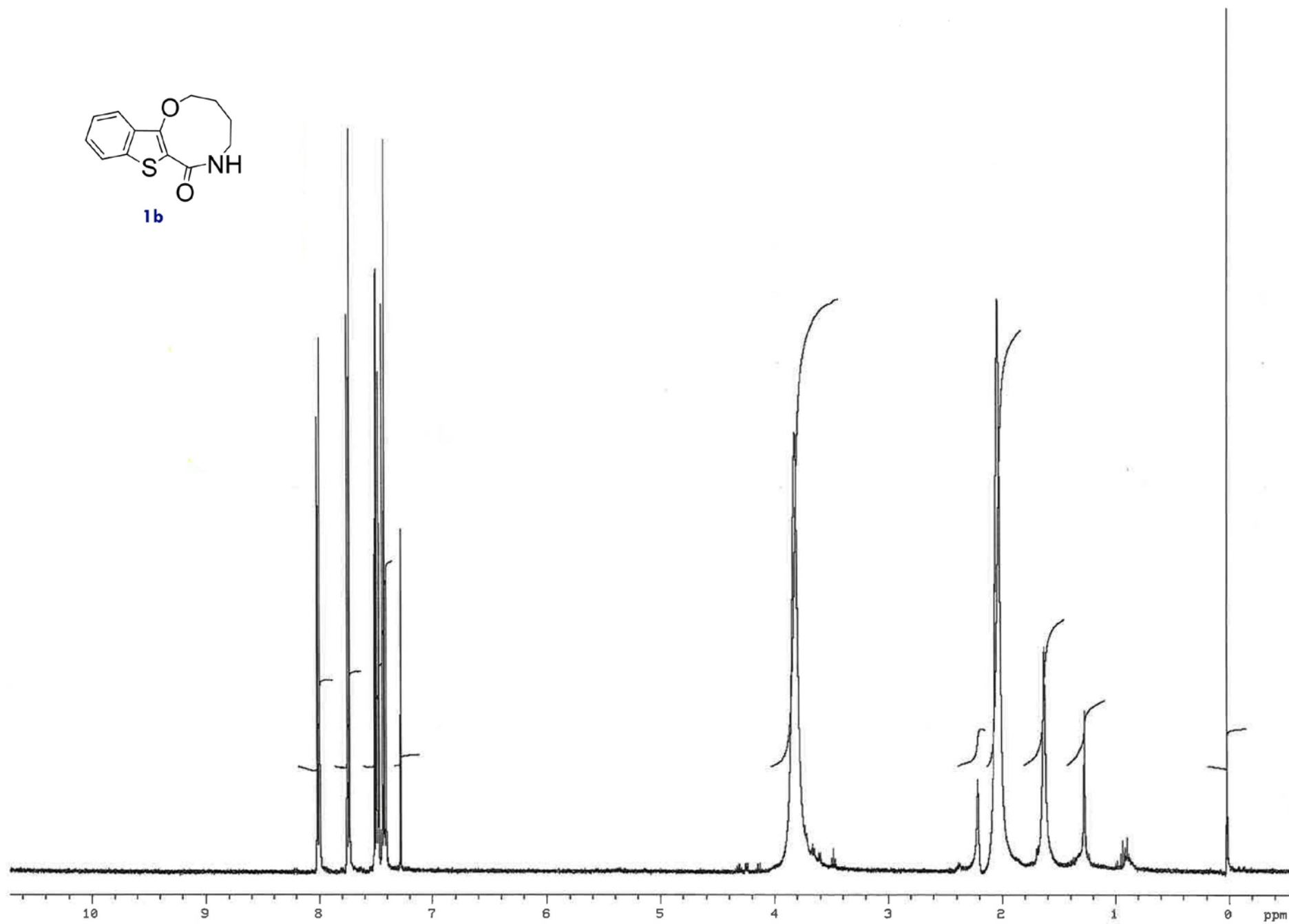
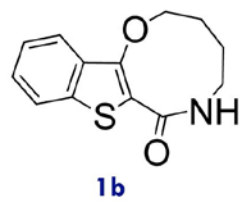


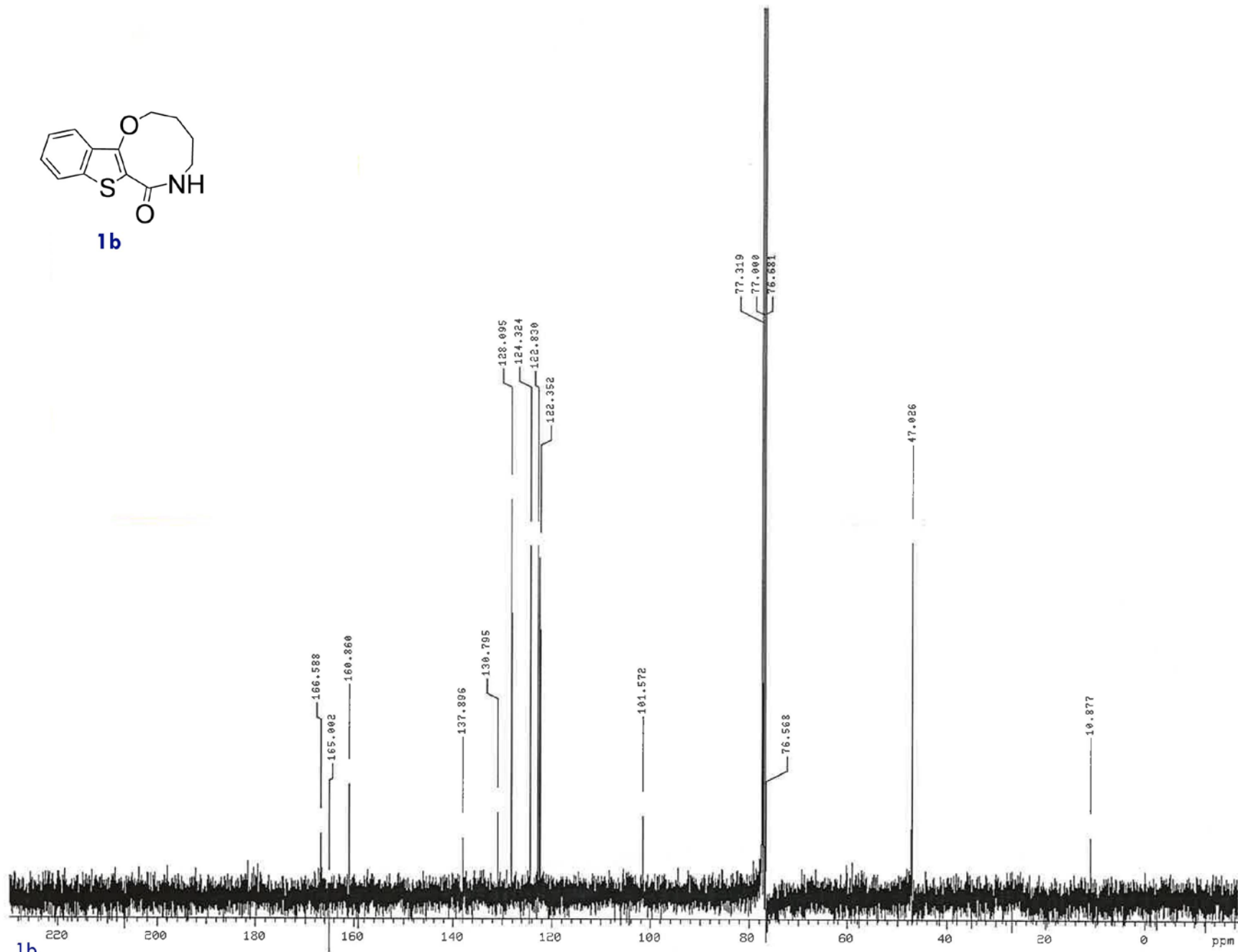
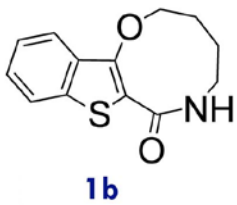


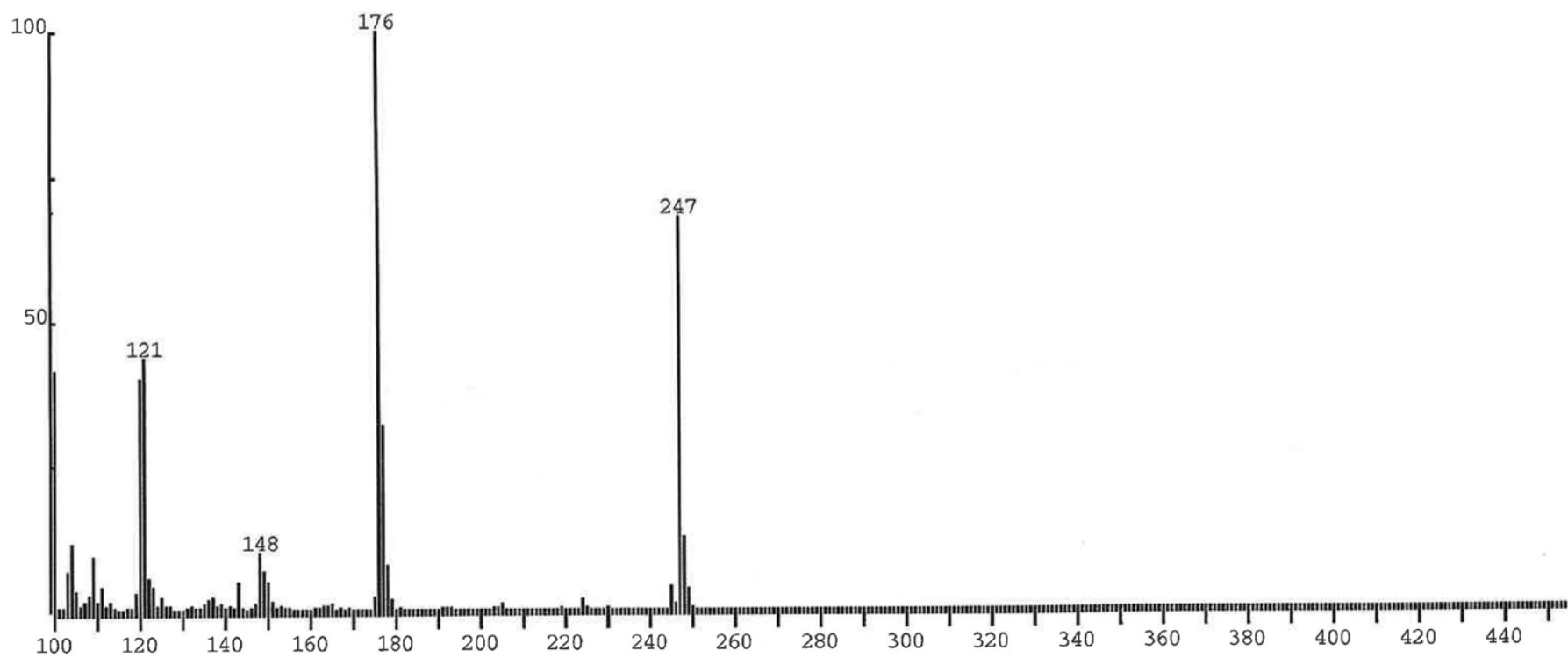
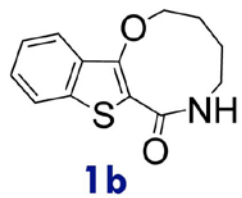
1a



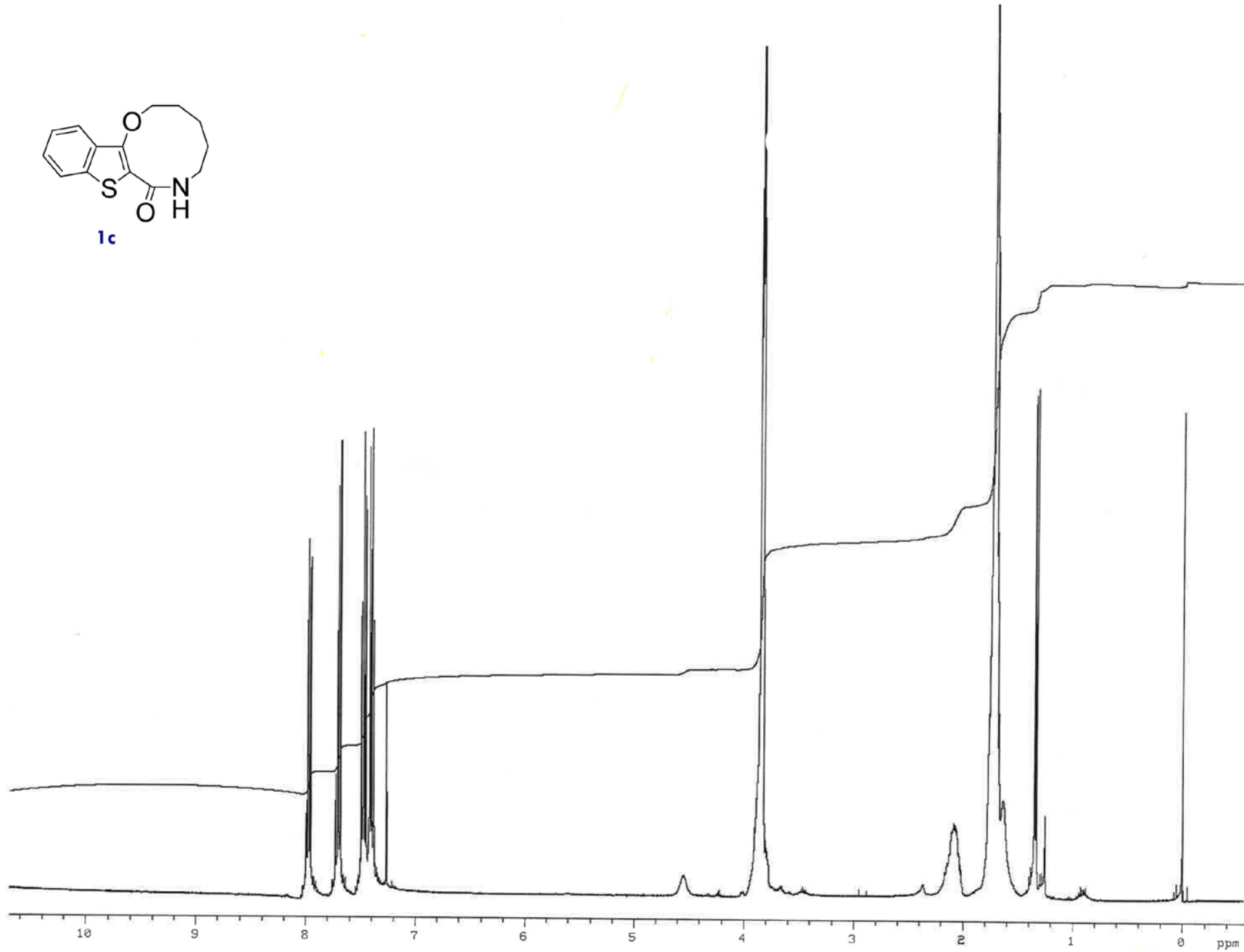
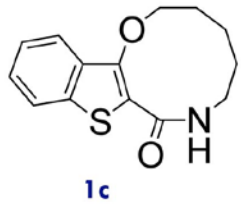
zm3-54 Spect. No. 7

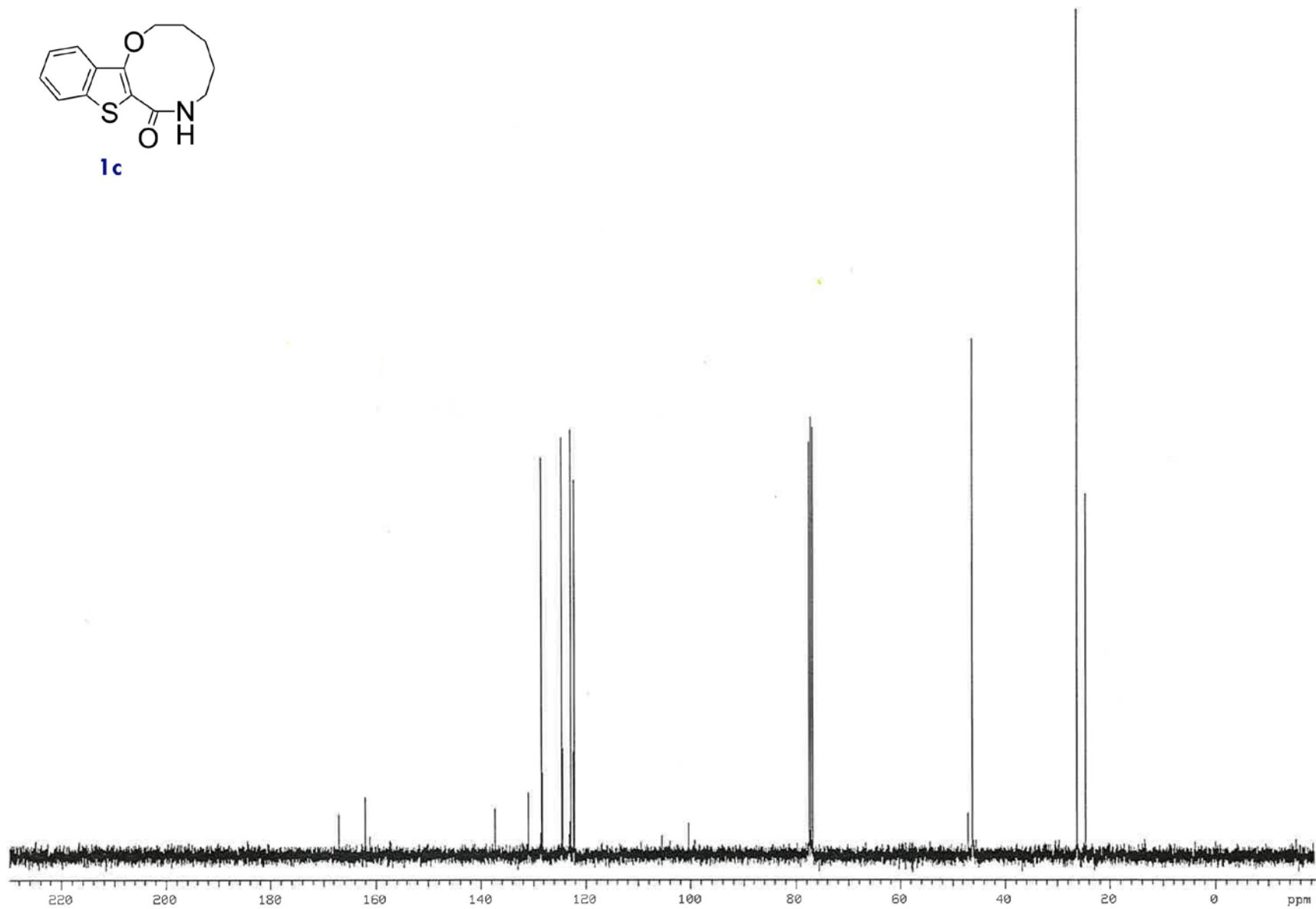
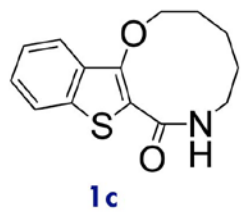


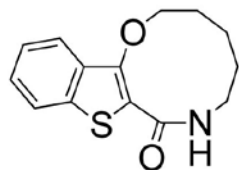




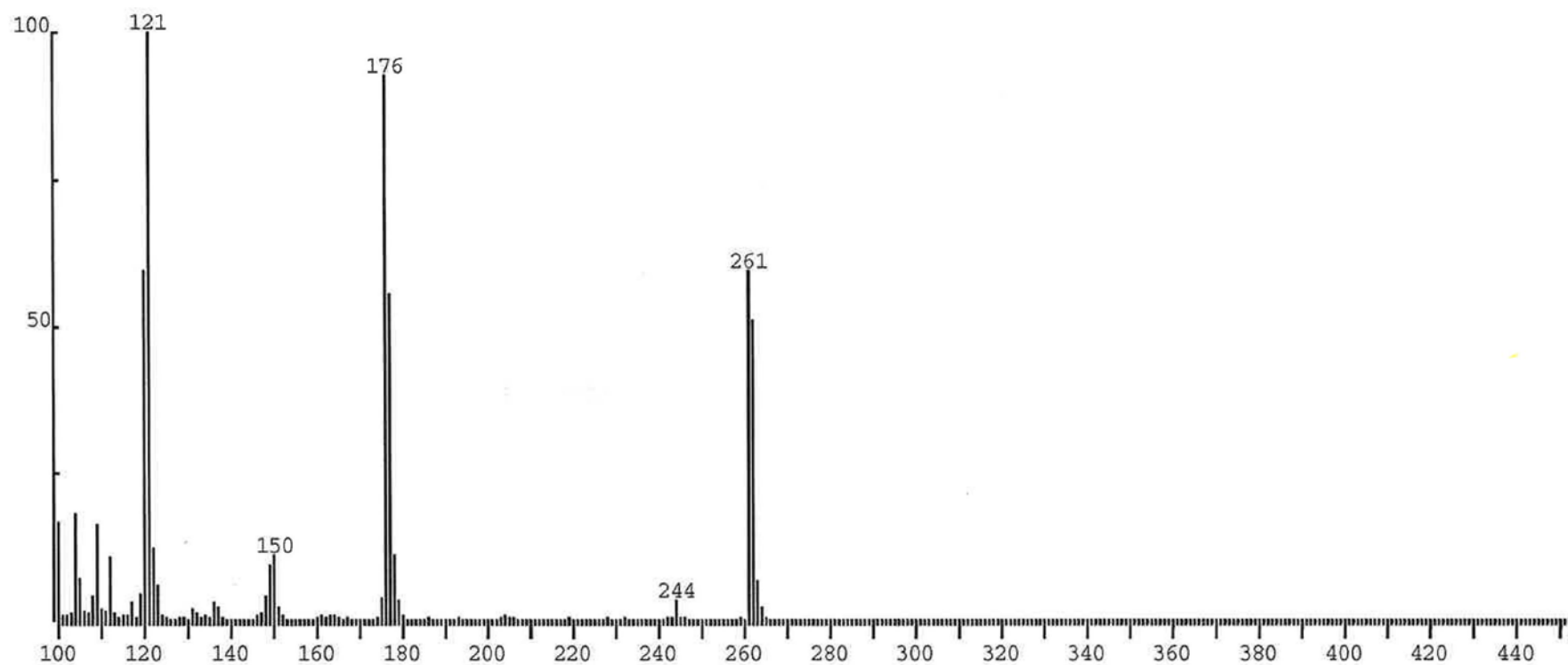
ZM3-26 Spect. No. 11



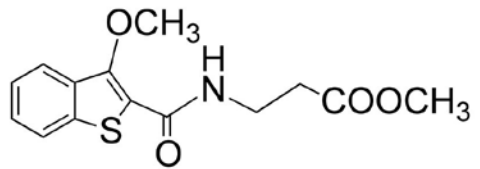




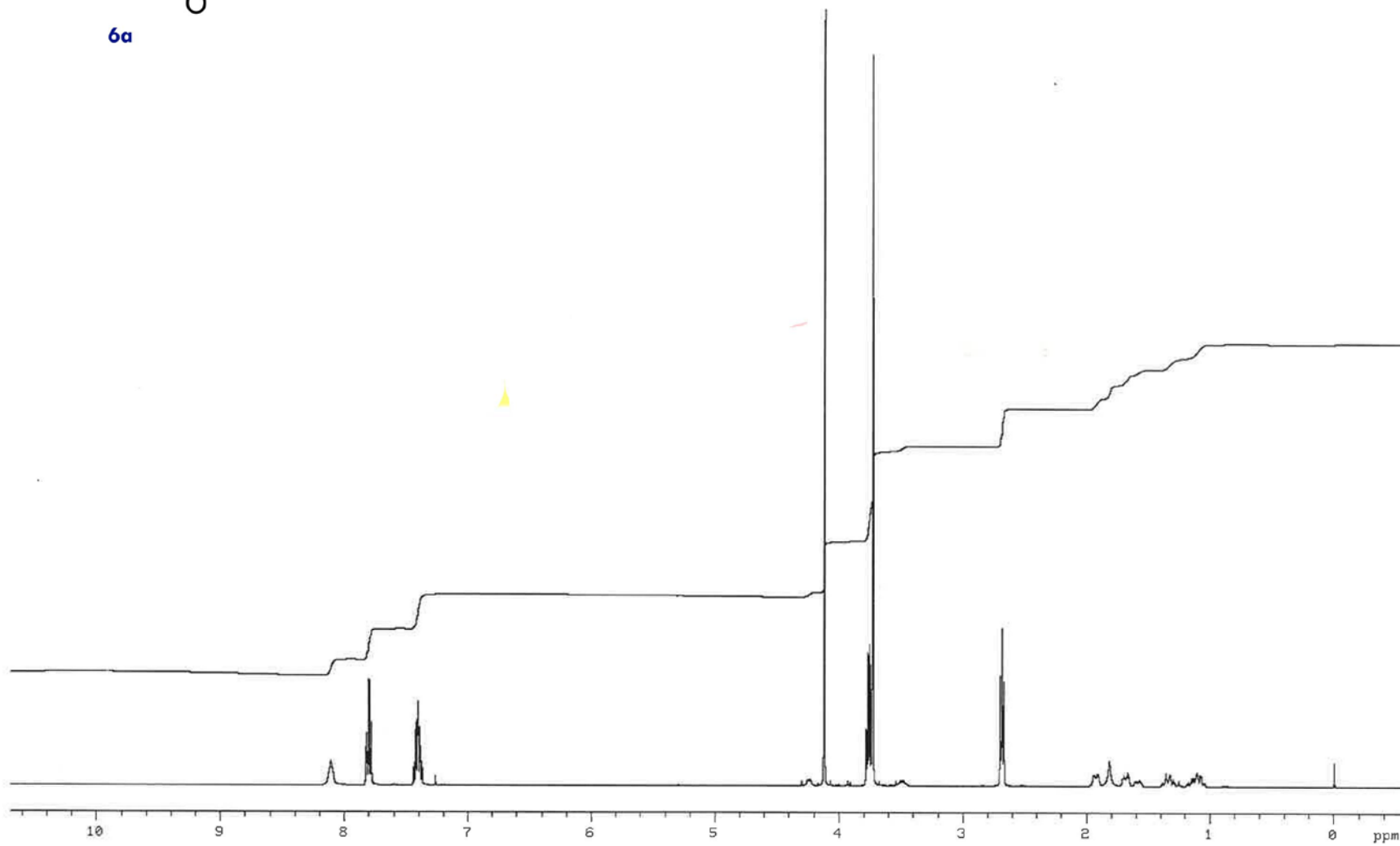
1c

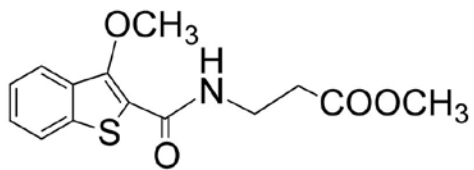


zm3-50 Spect. No. 6

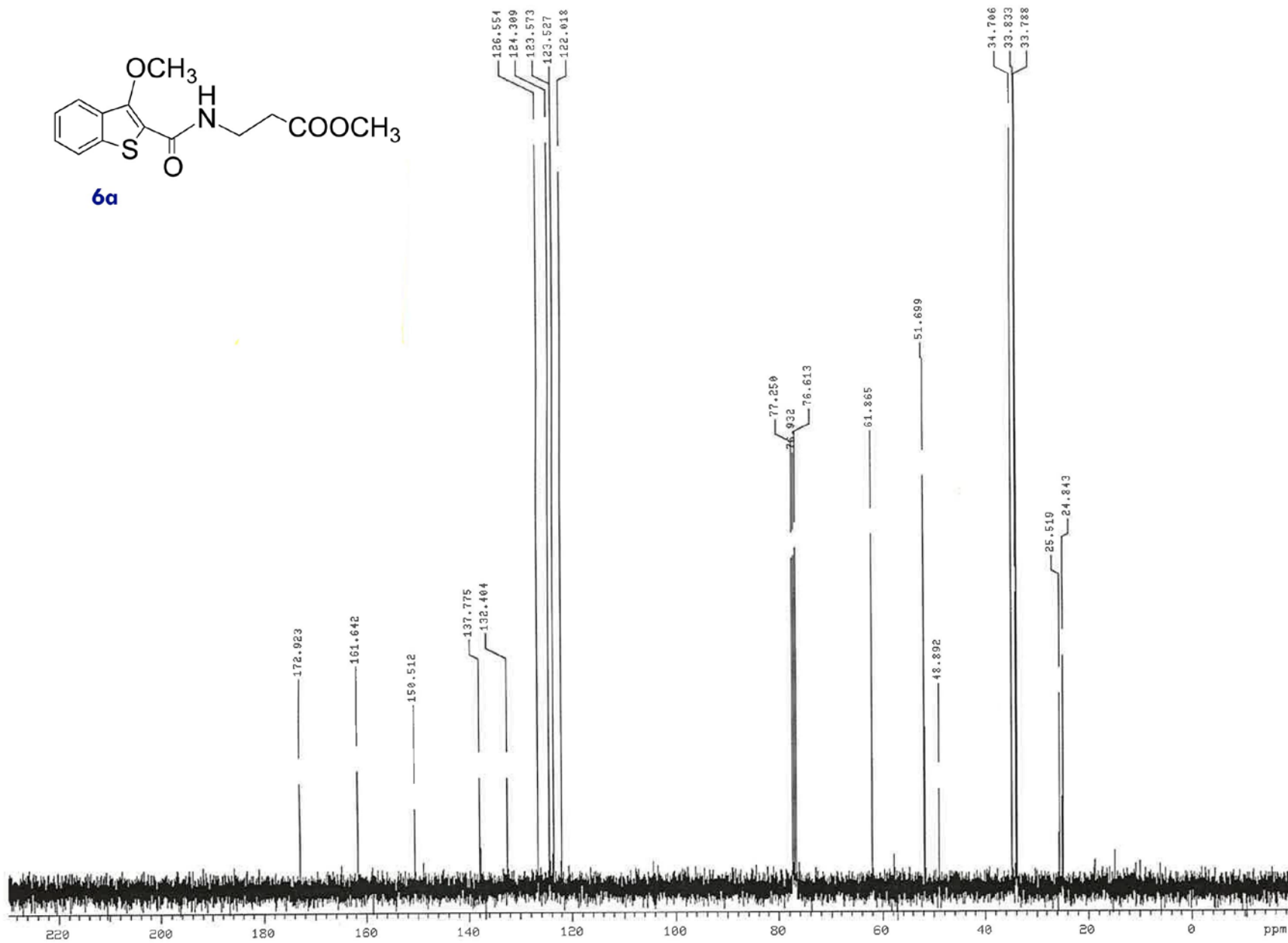


6a

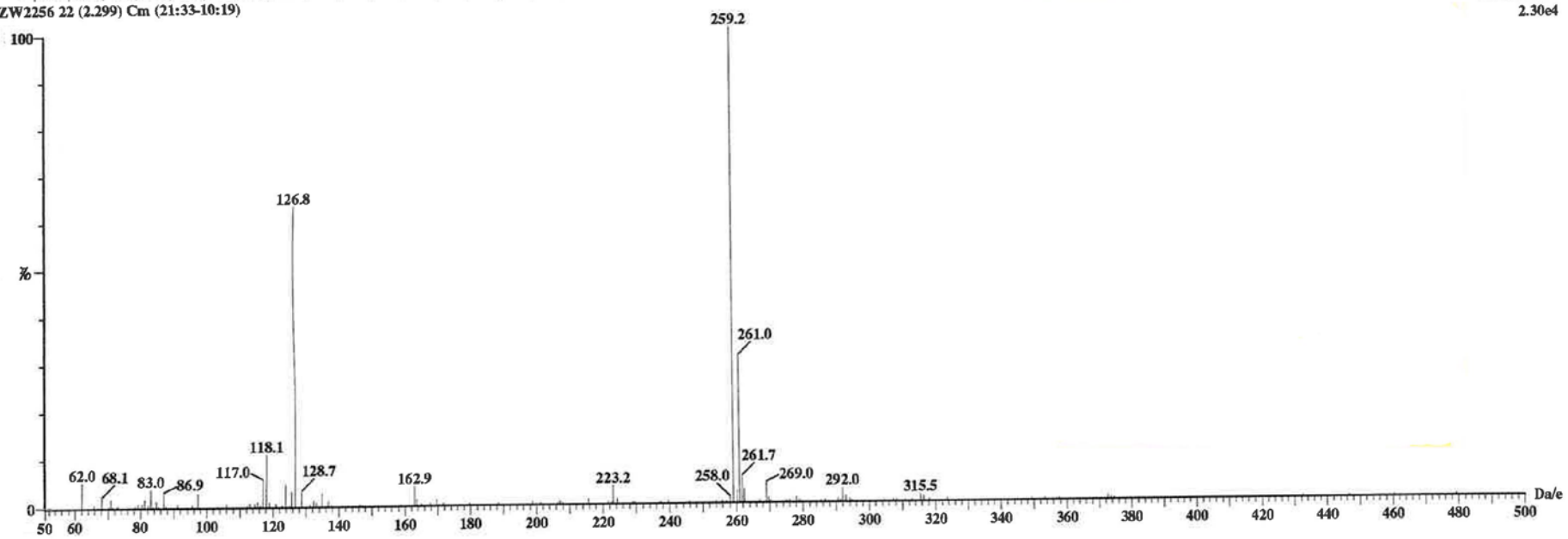
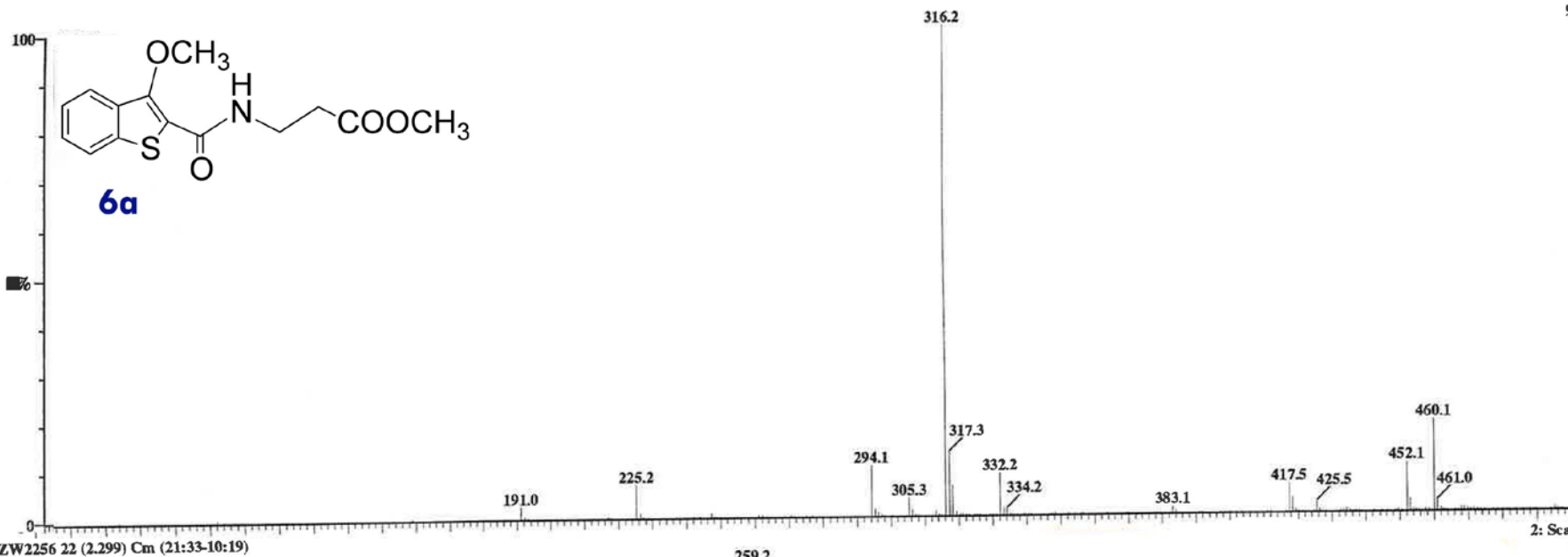


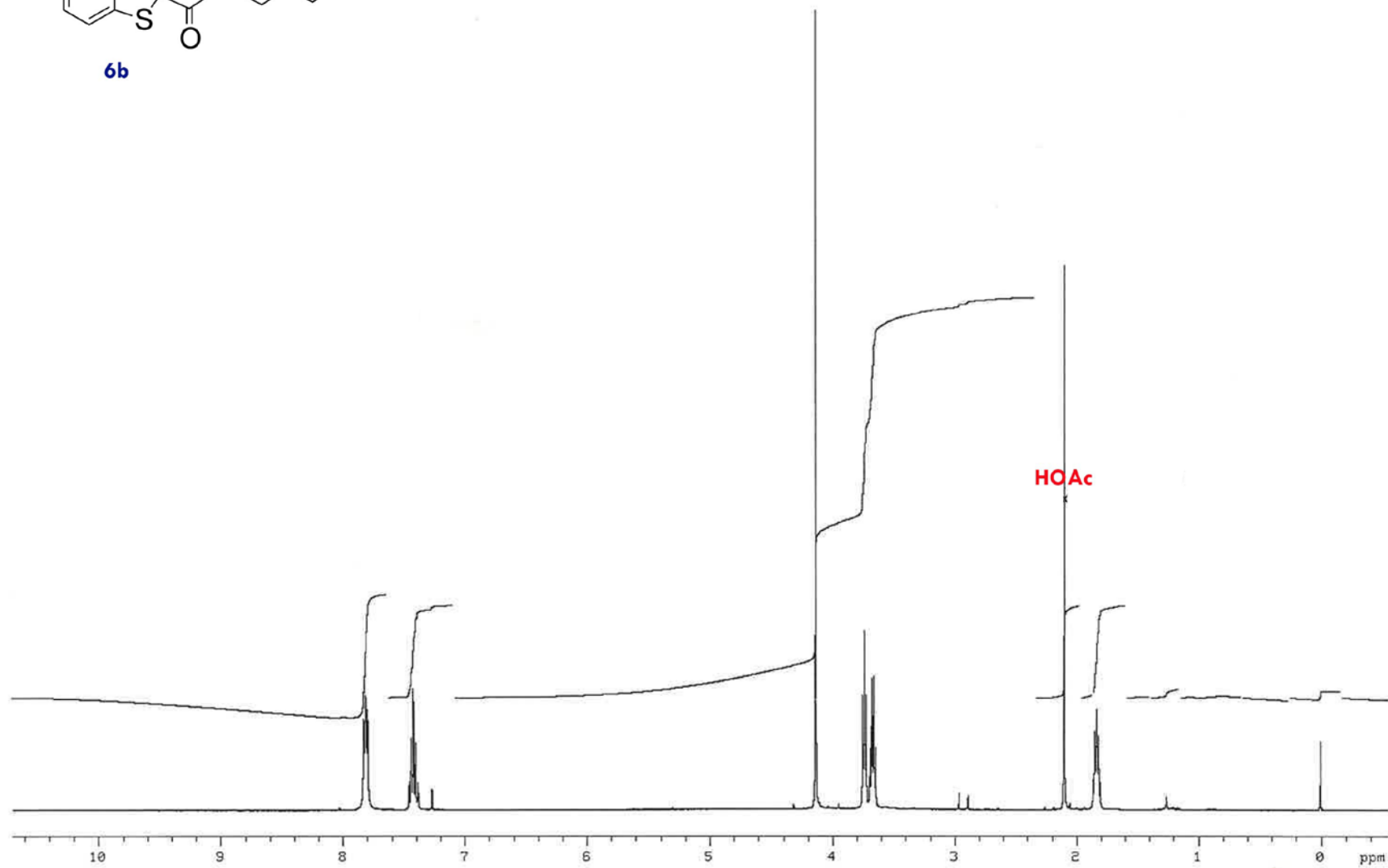
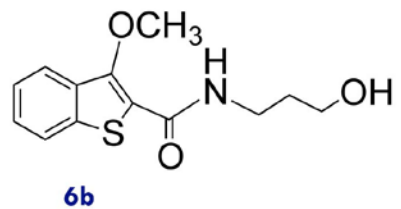


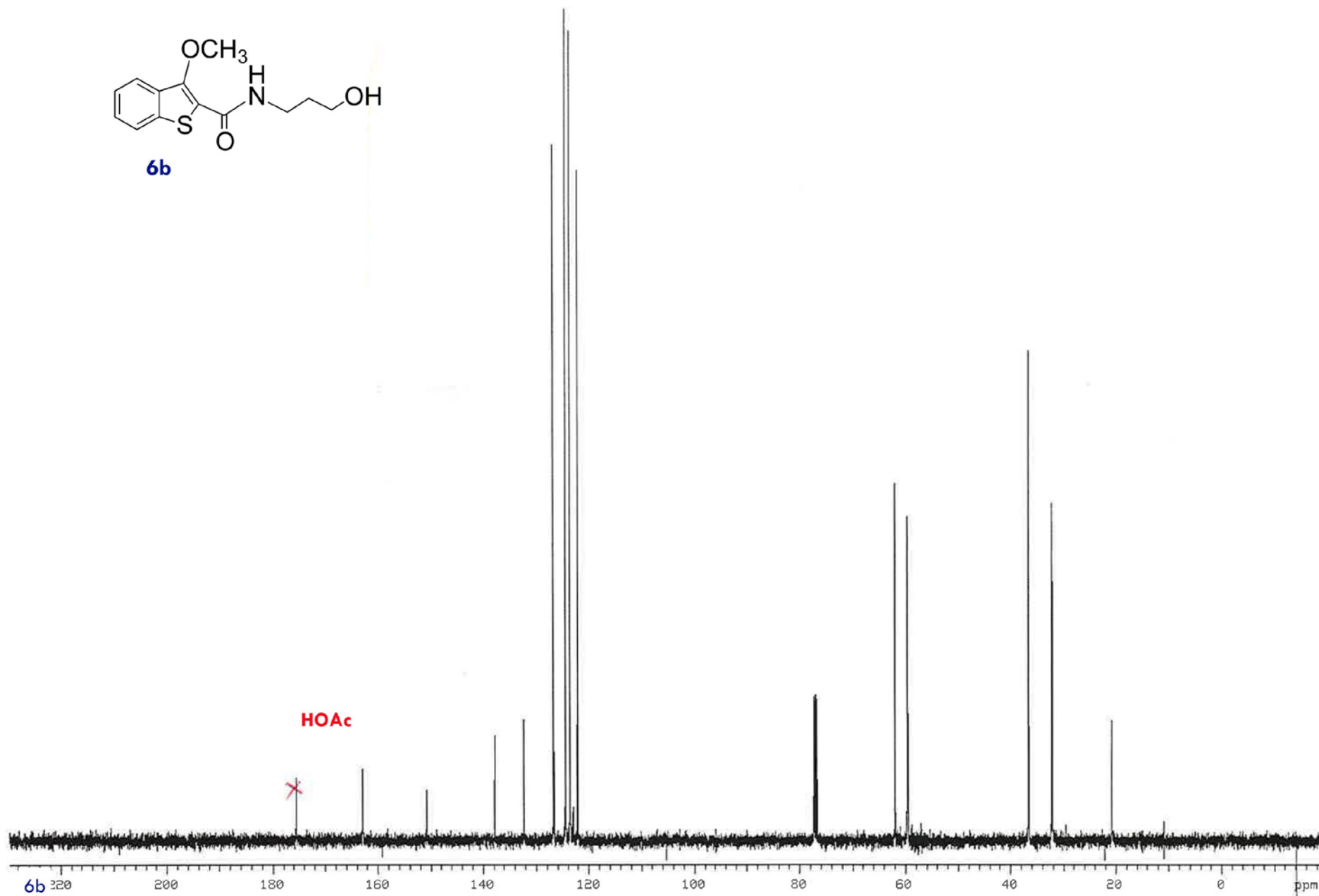
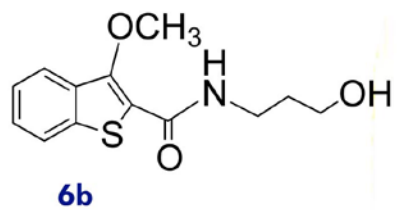
6a



1: Scan ES+
9.38e5



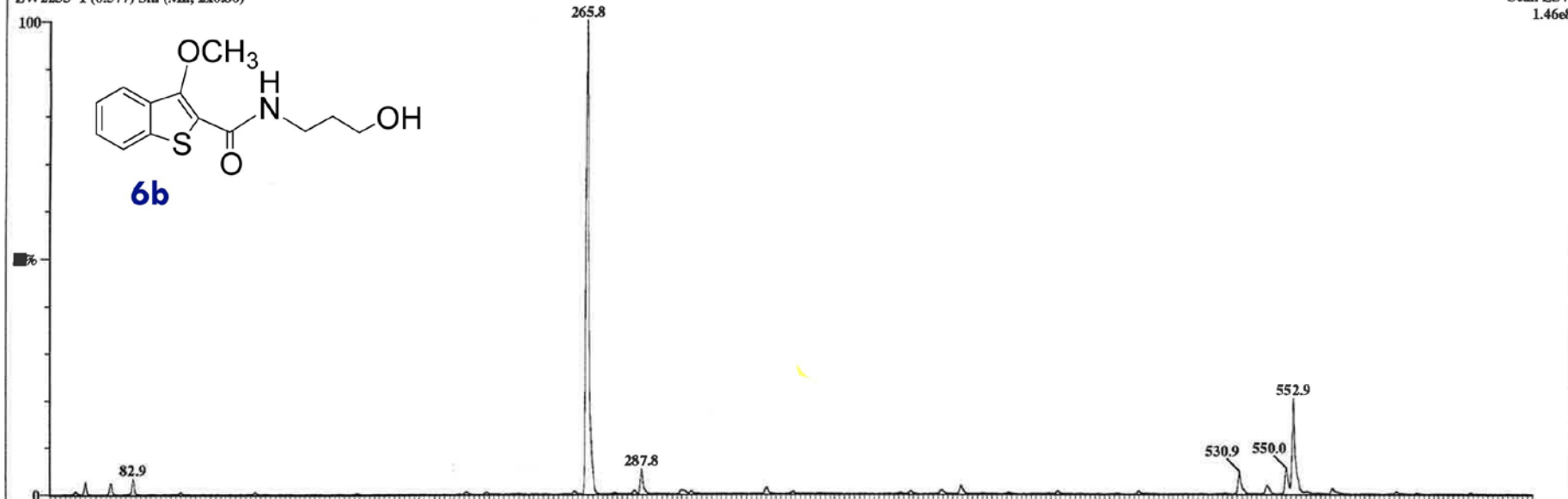




ZMIII-52, res=12.5/12.5, B1=50V

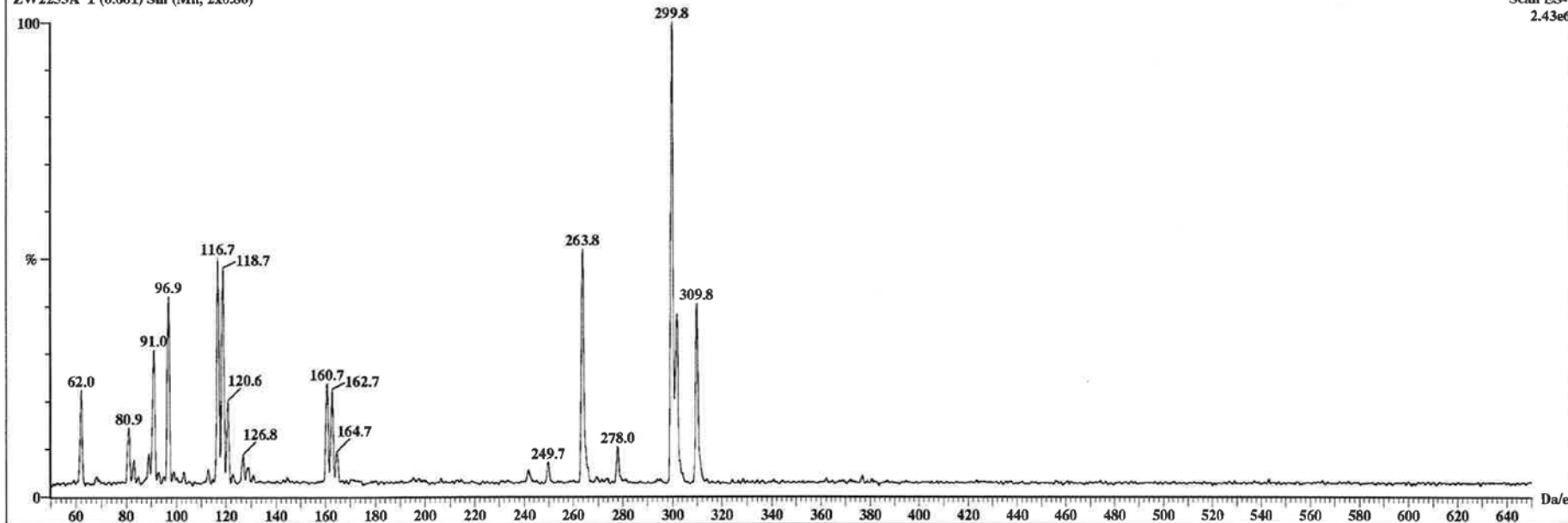
ZW2255 1 (0.577) Sm (Mn, 2x0.80)

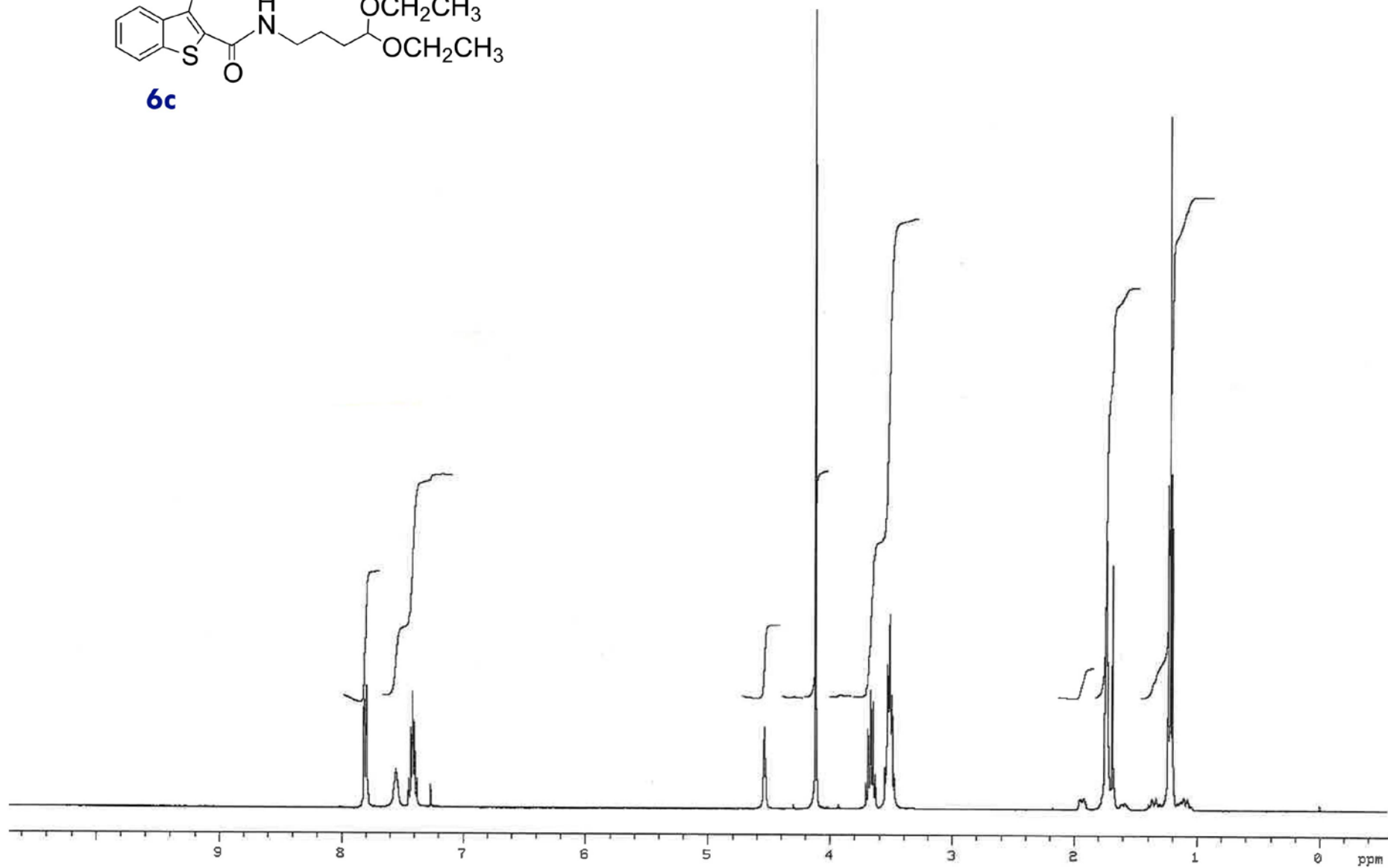
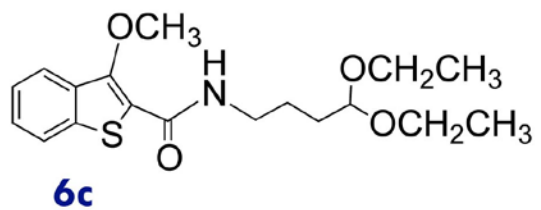
Scan ES+
1.46e8

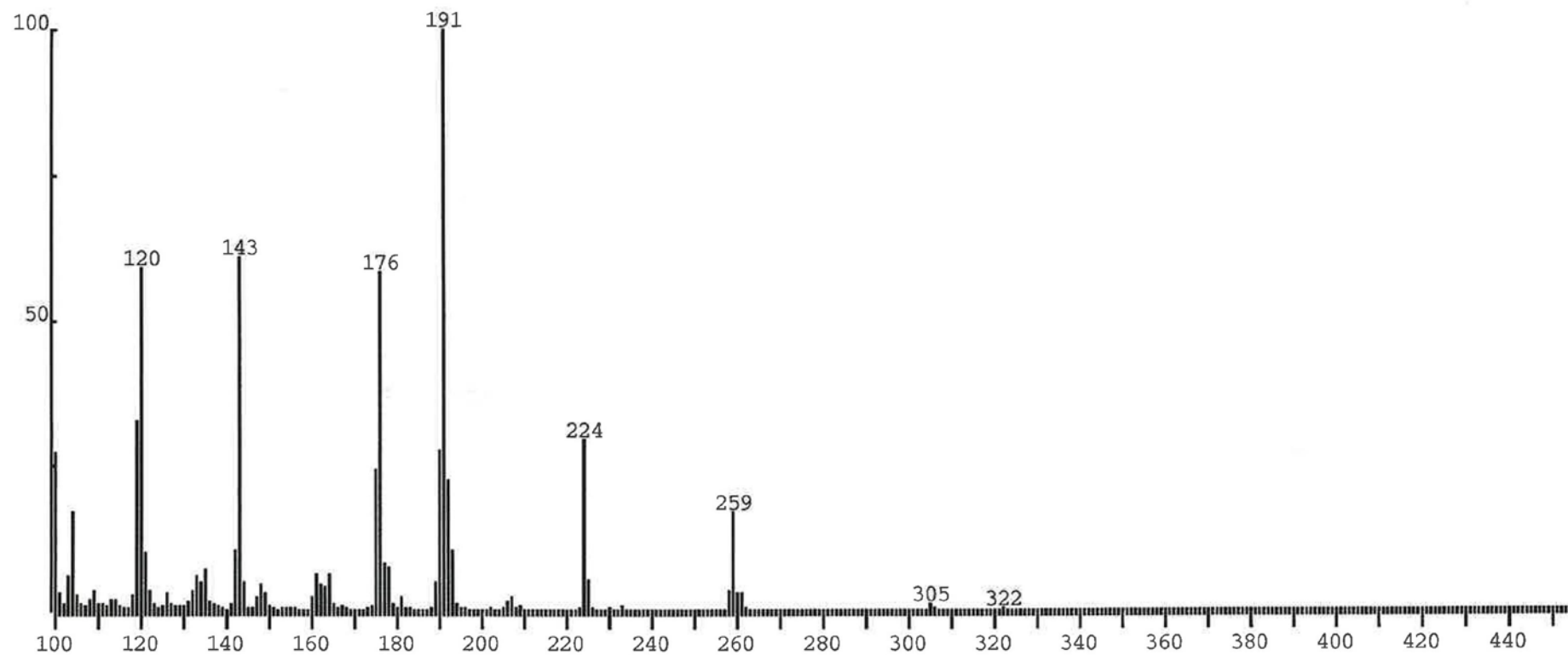
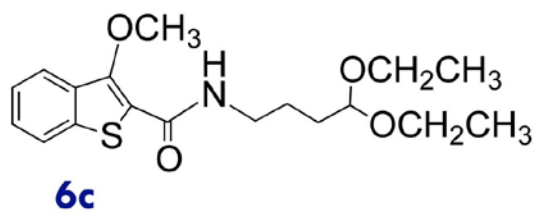


ZW2255A 1 (0.661) Sm (Mn, 2x0.80)

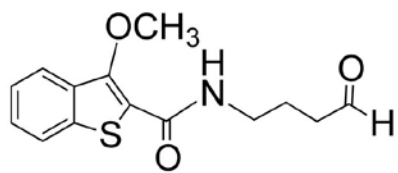
Scan ES-
2.43e6



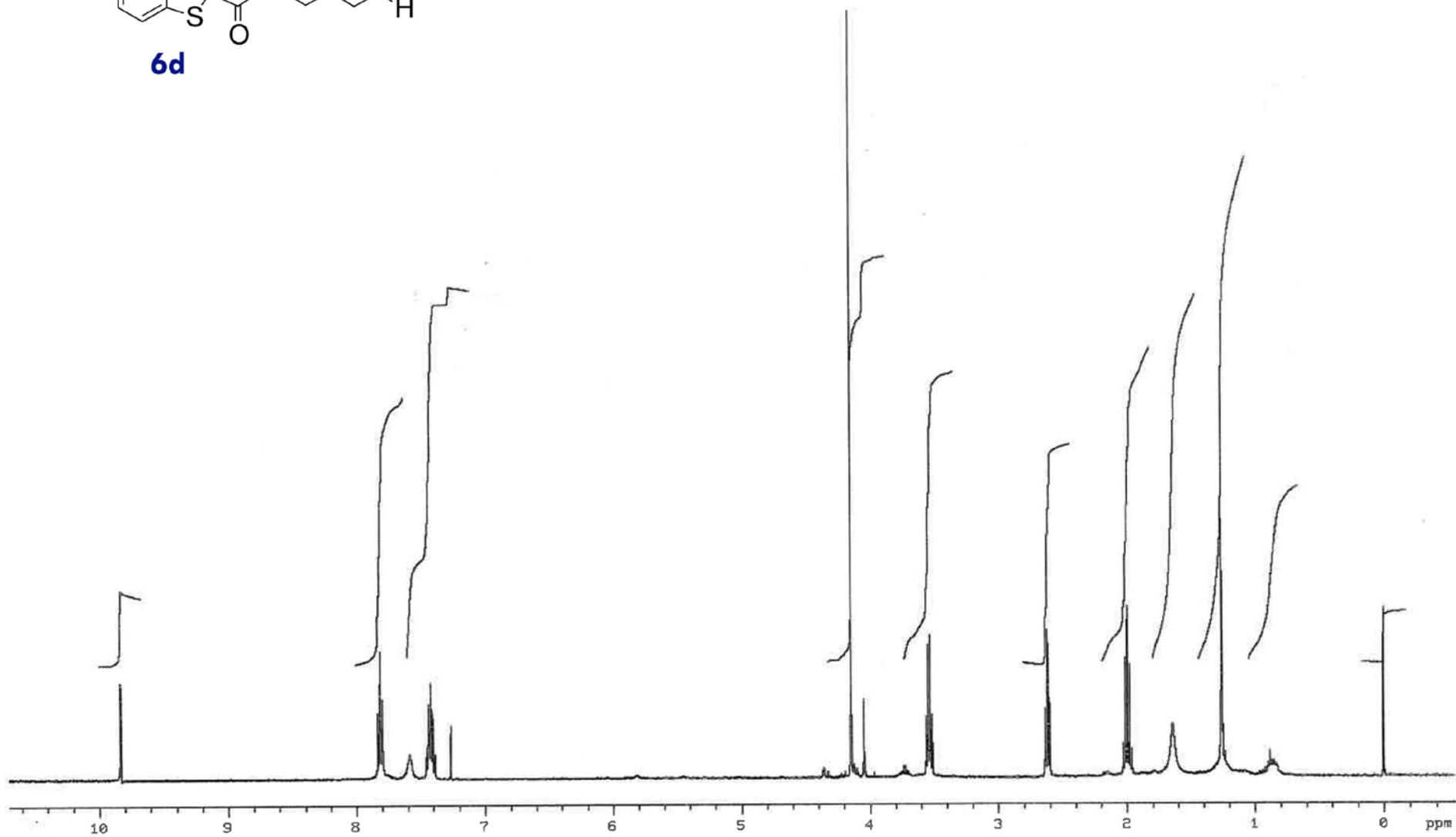


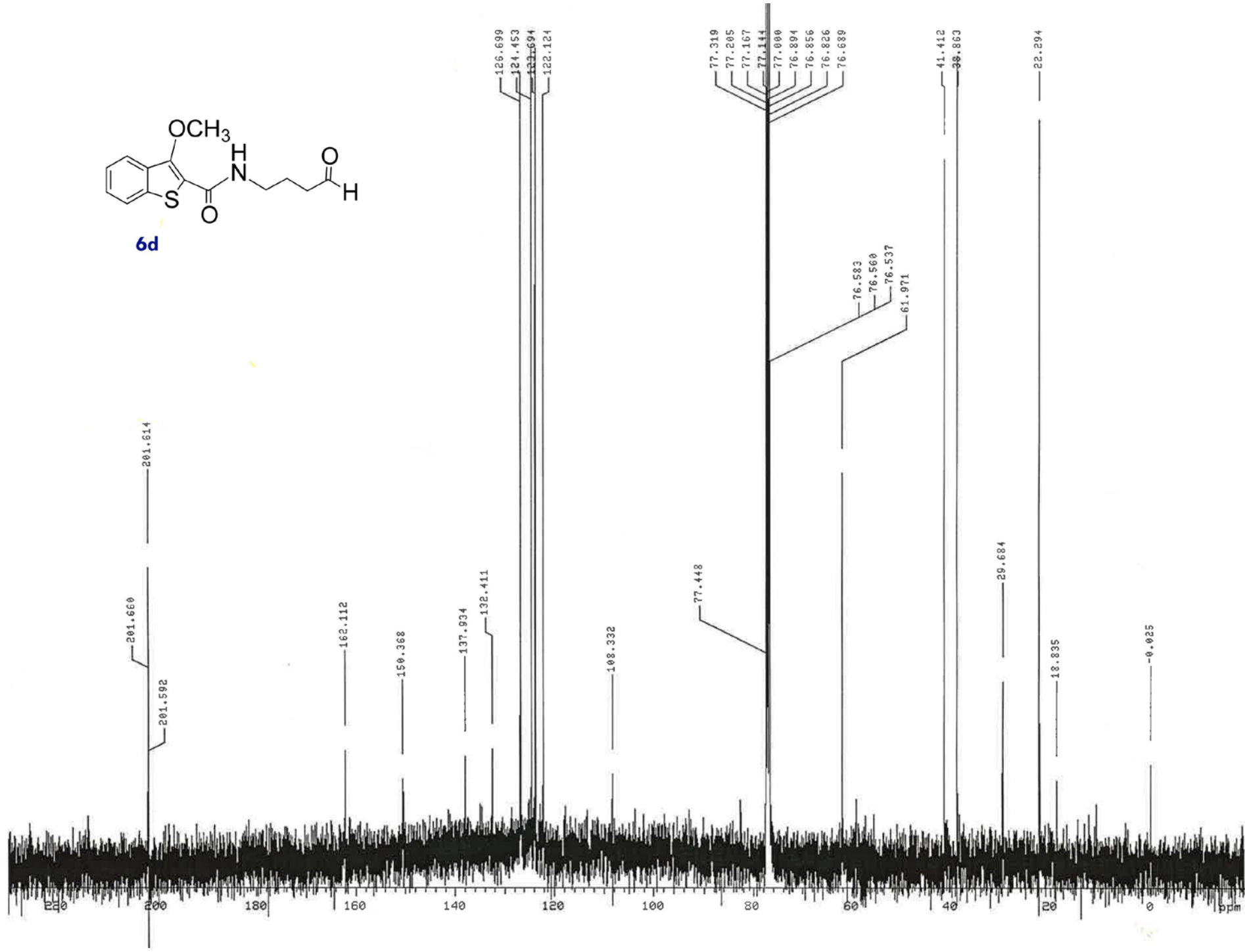
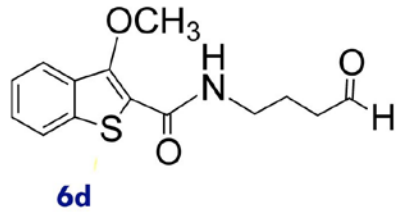


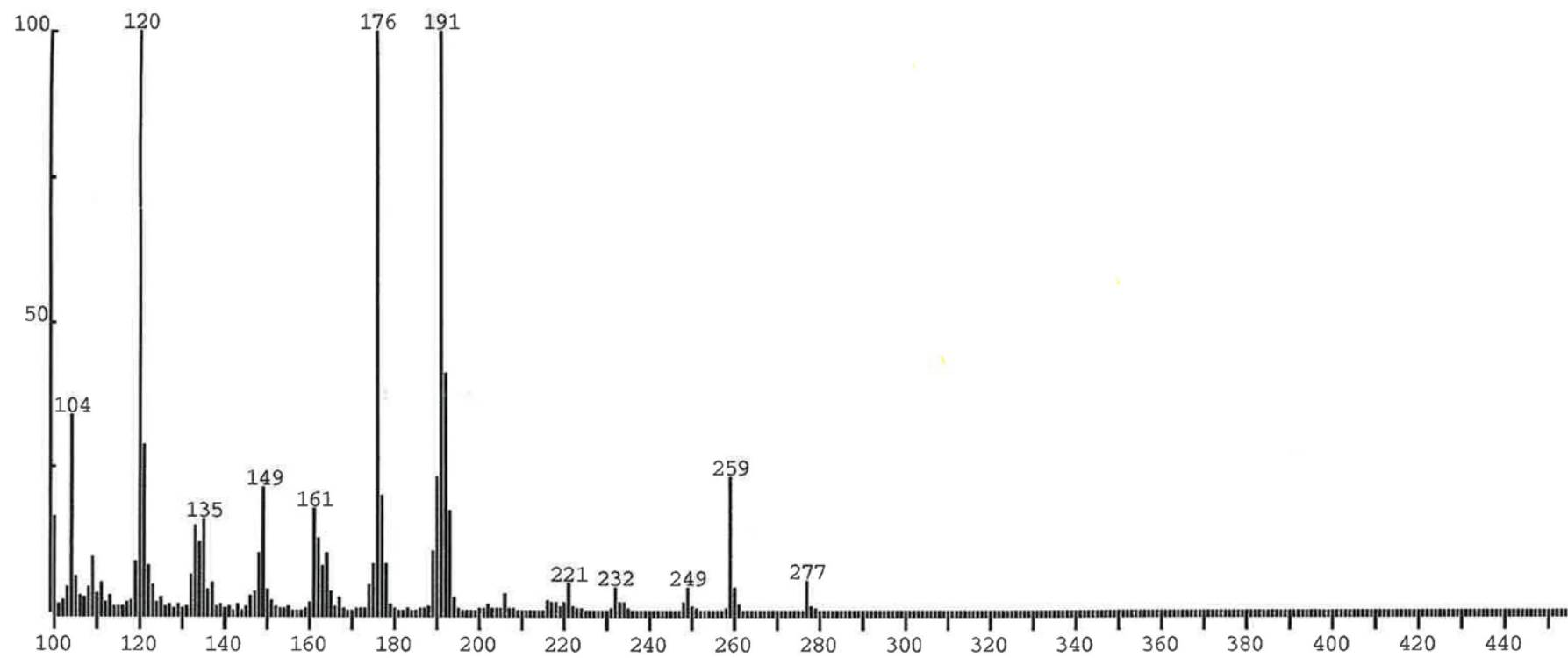
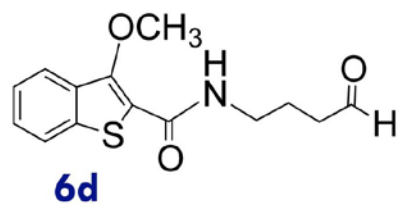
ZM3-20 Spect. No. 6



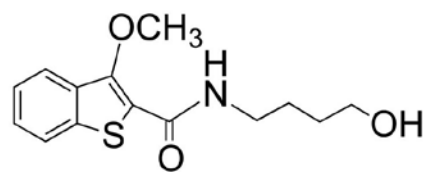
6d



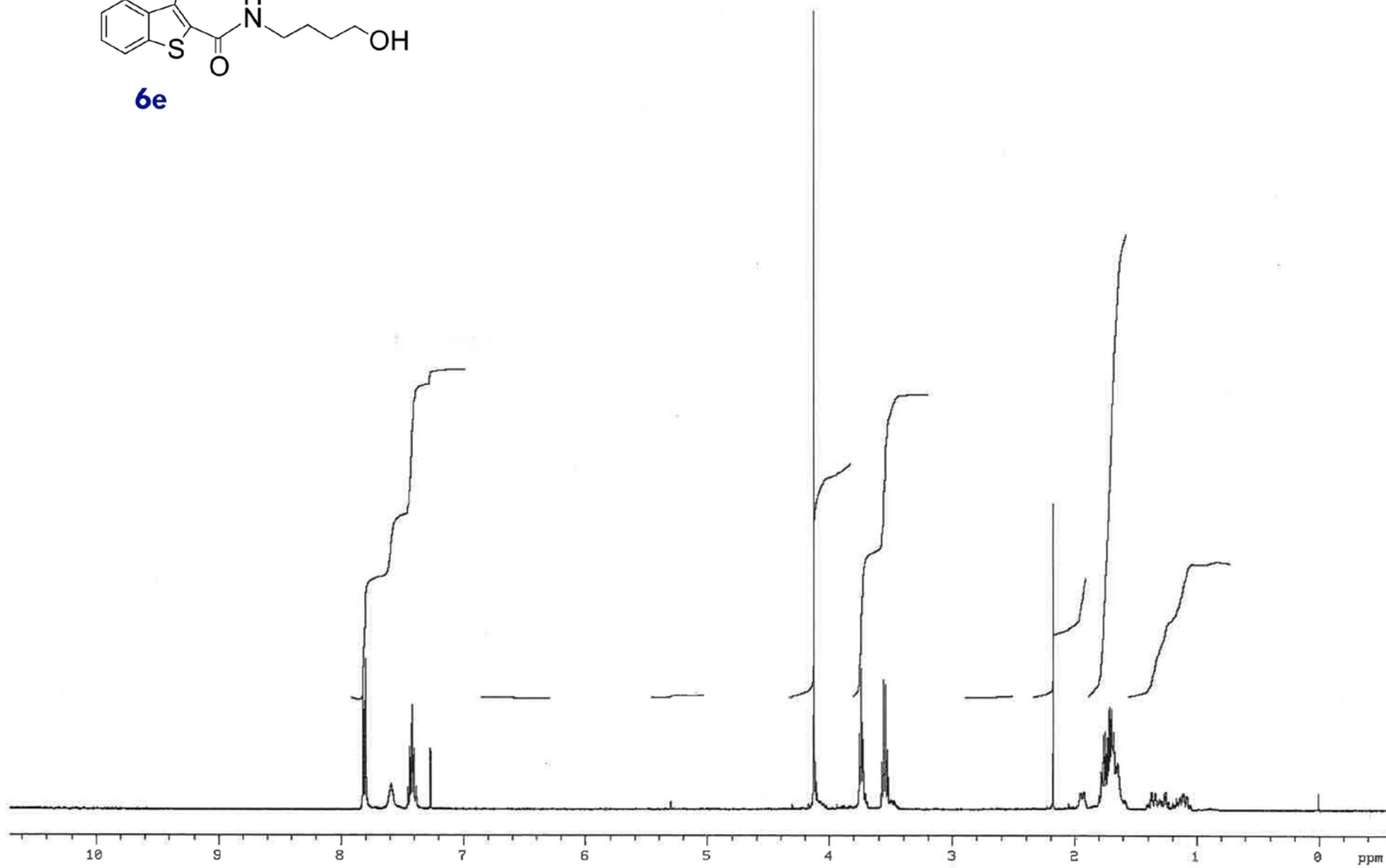


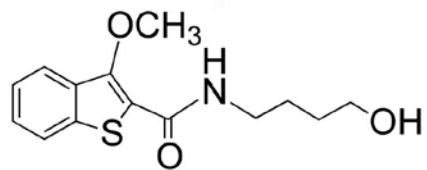


ZM3-22 Spect. No. 4

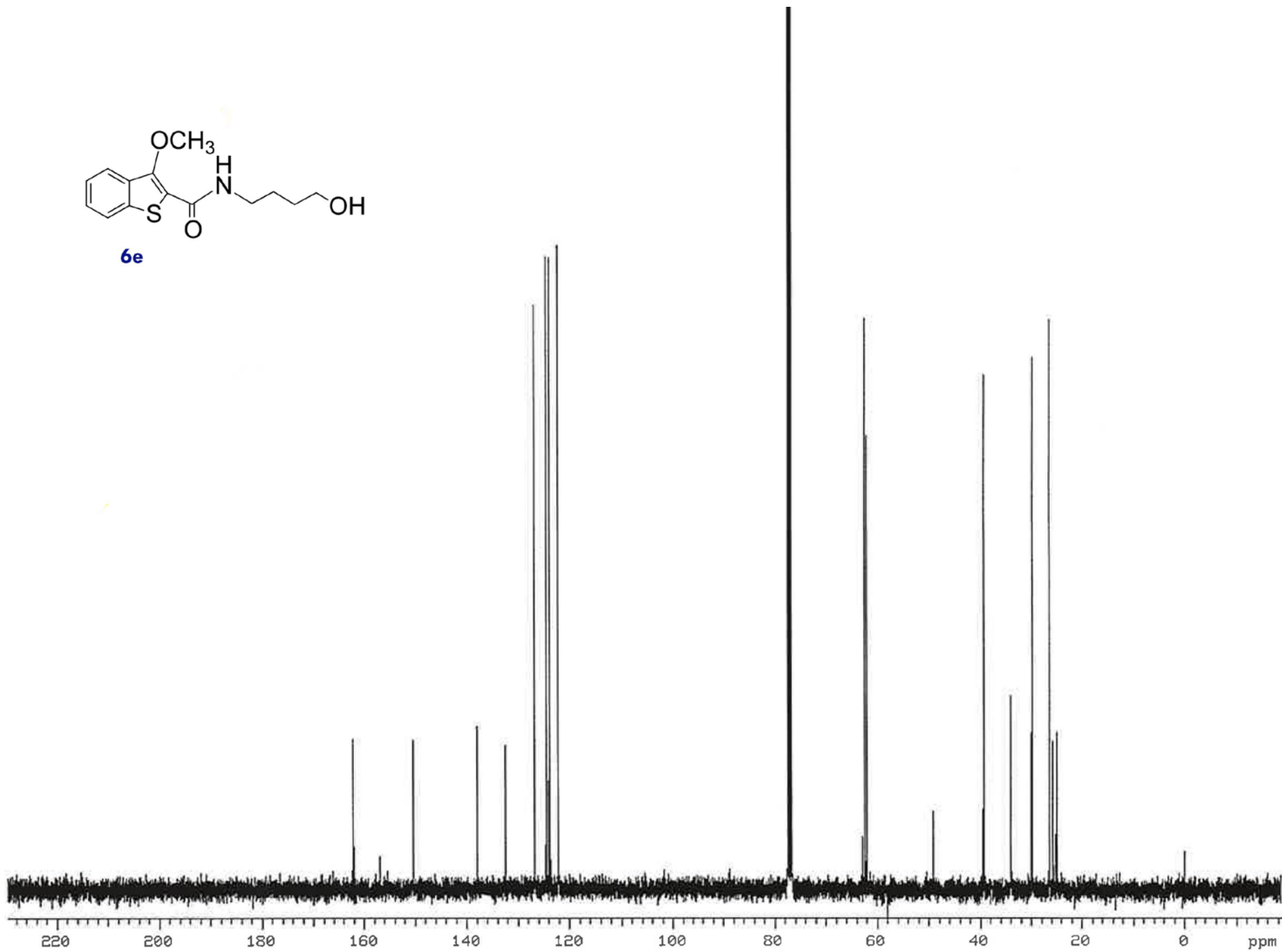


6e





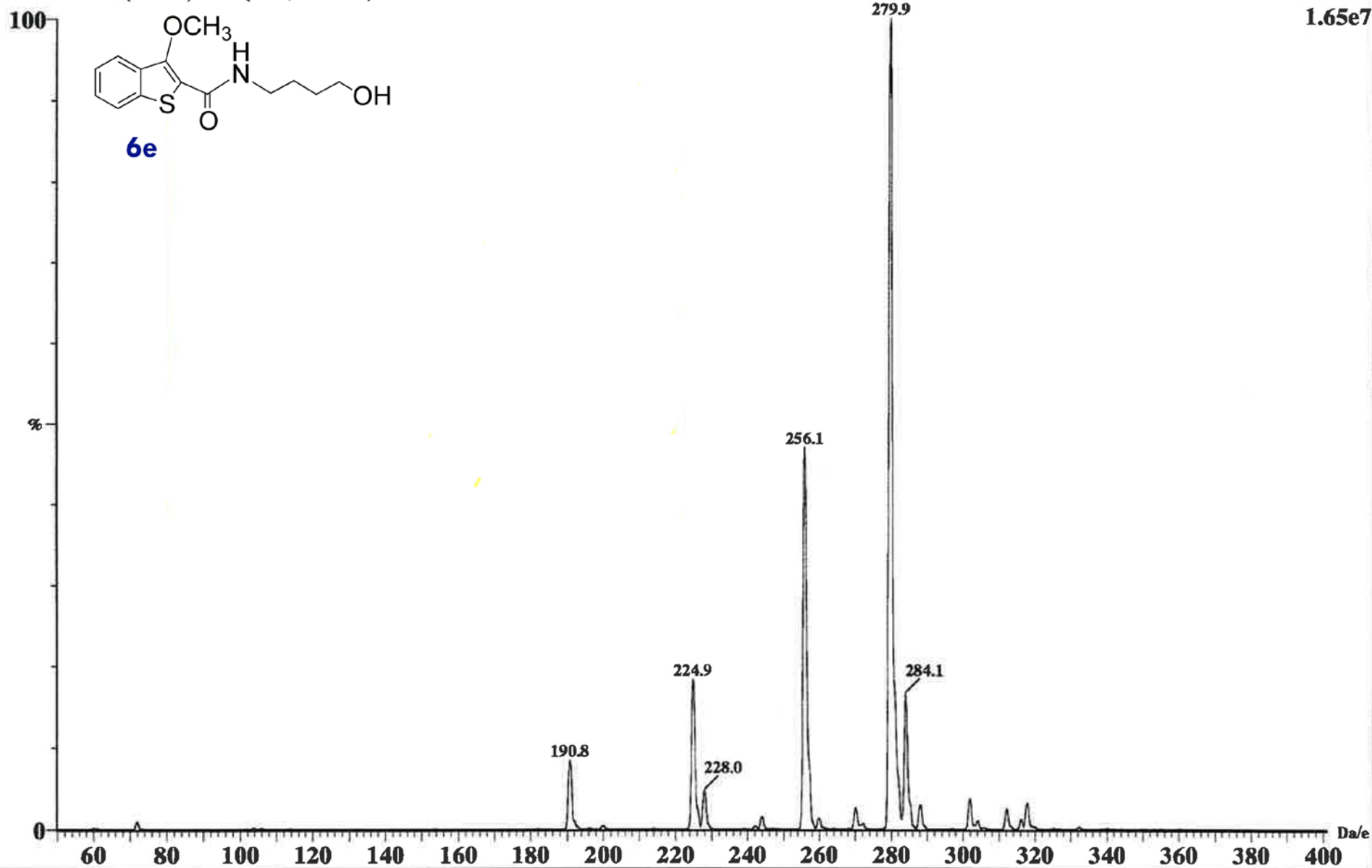
6e

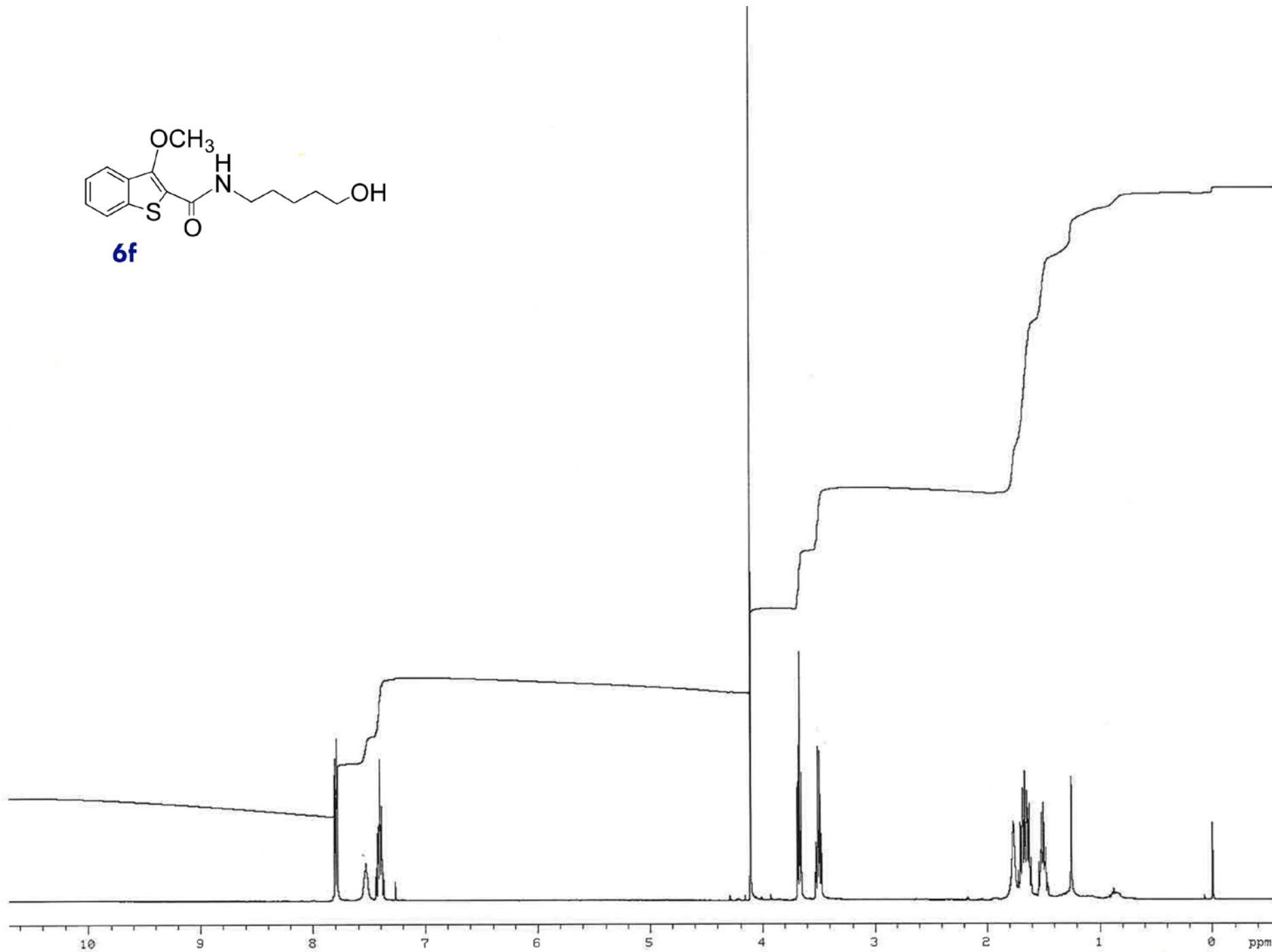
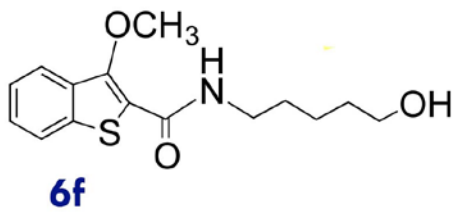


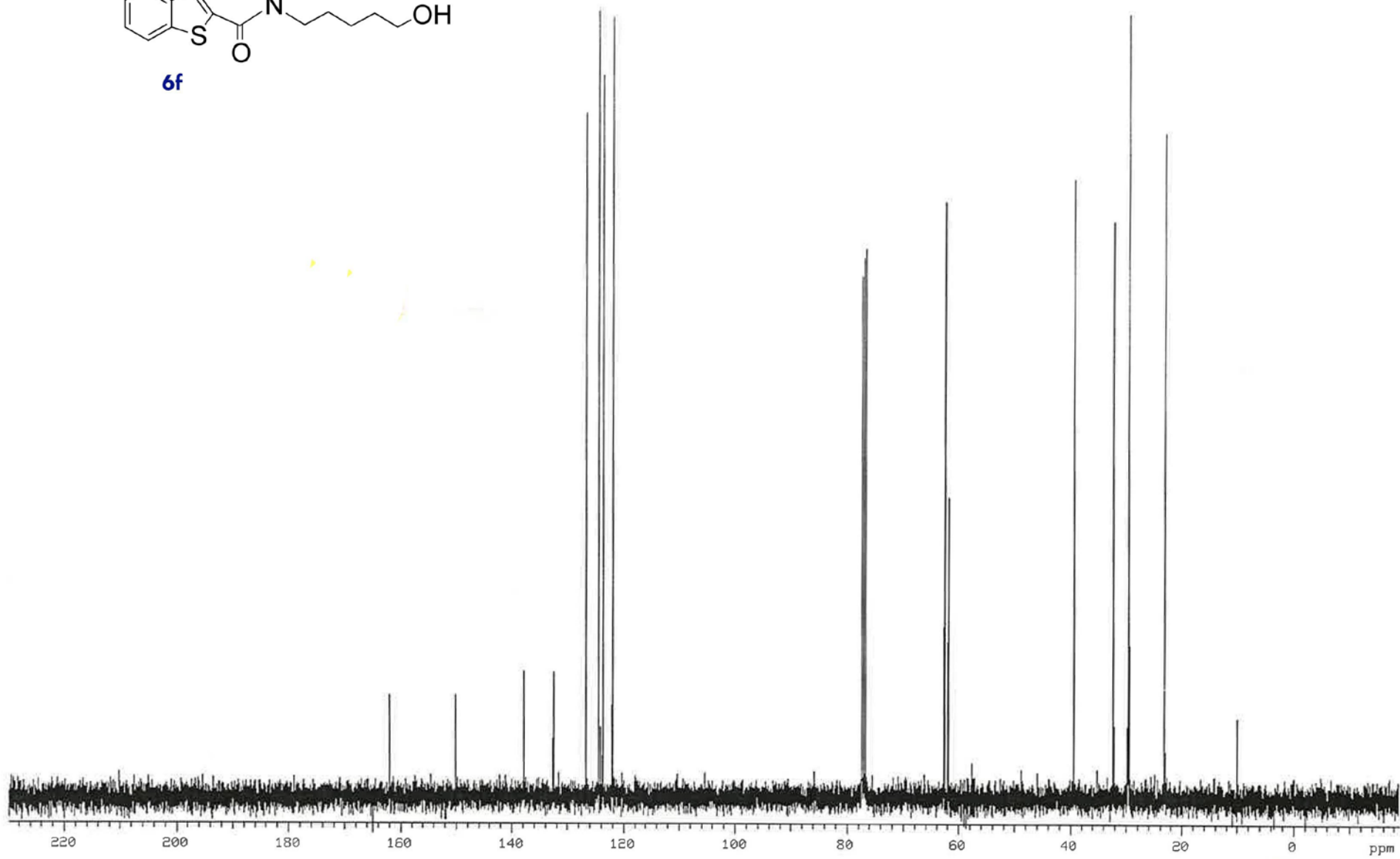
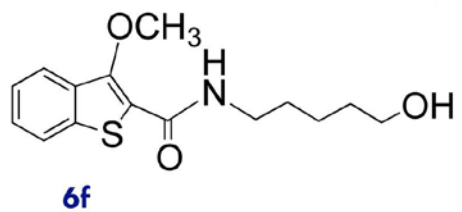
ZM3-23, B1=50V res=12.5/14

ZW2030 1 (1.052) Sm (Mn, 2x0.50)

Scan ES+
1.65e7



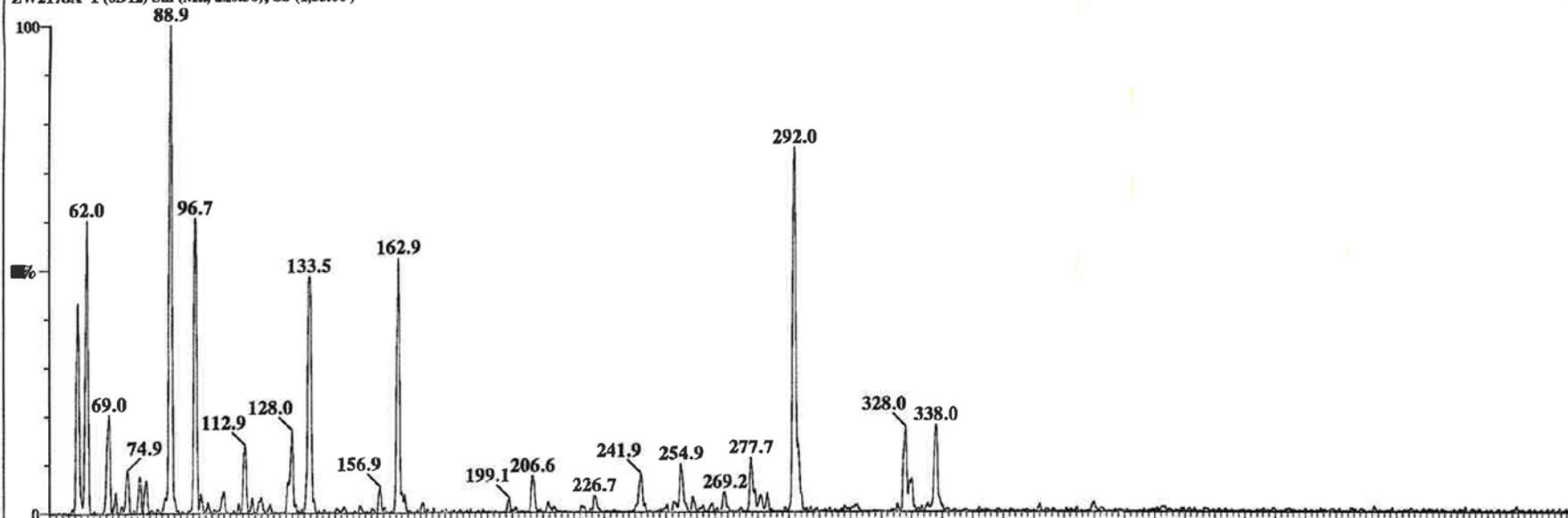




ZM3-48, res 12/14, B1=50V

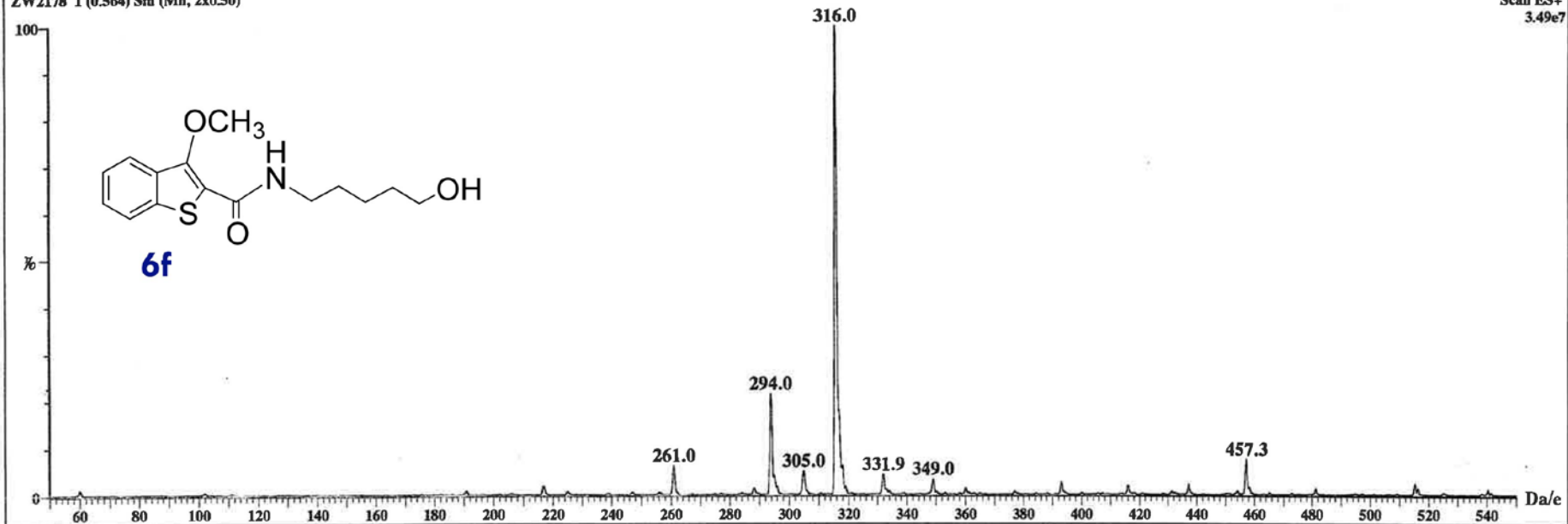
ZW2178A 1 (0.912) Sm (Mn, 2x0.50); Sb (1,33.00)

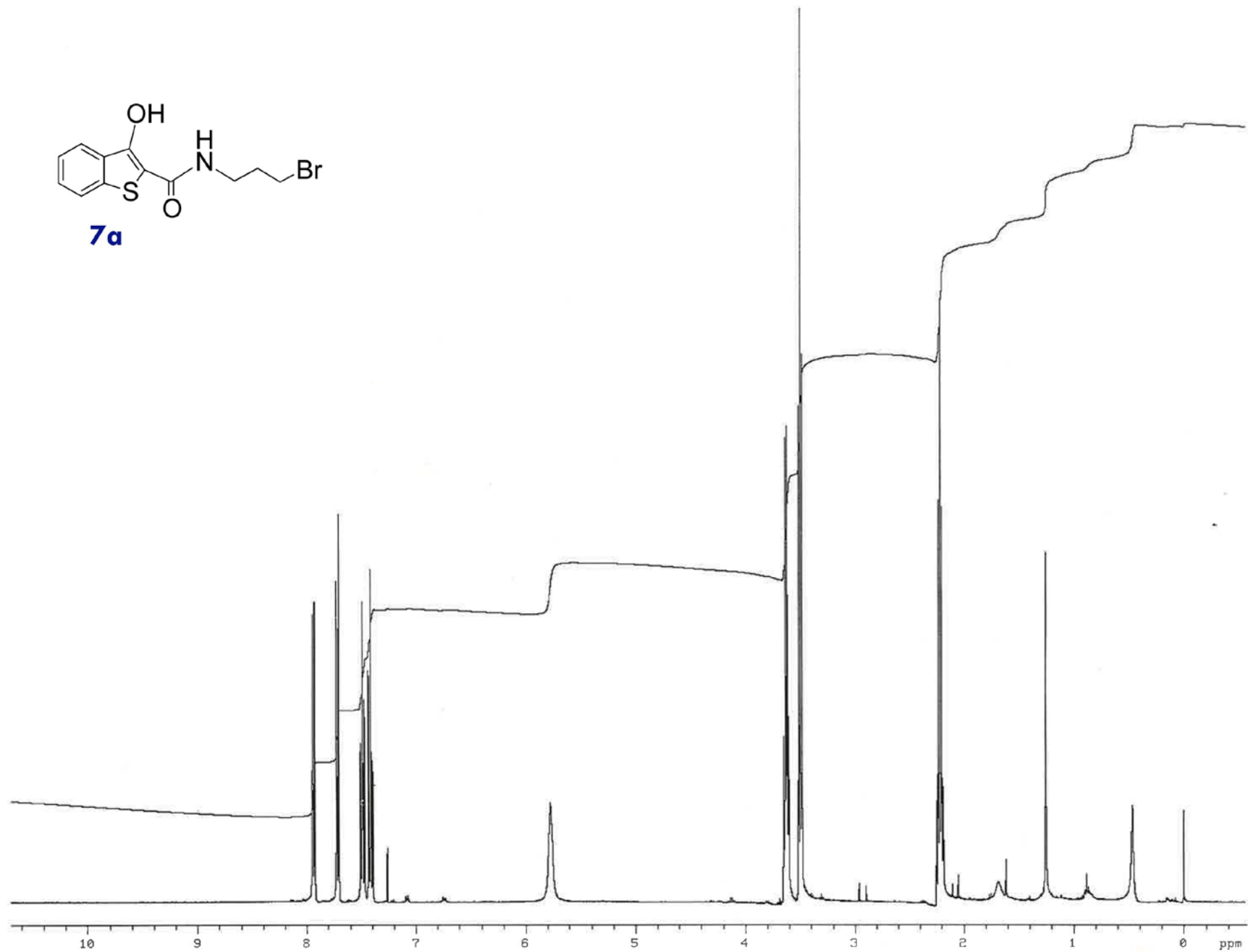
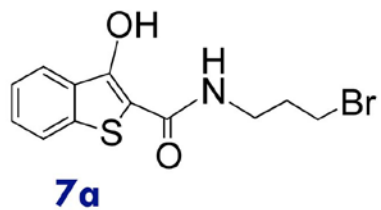
Scan ES-
2.01e6

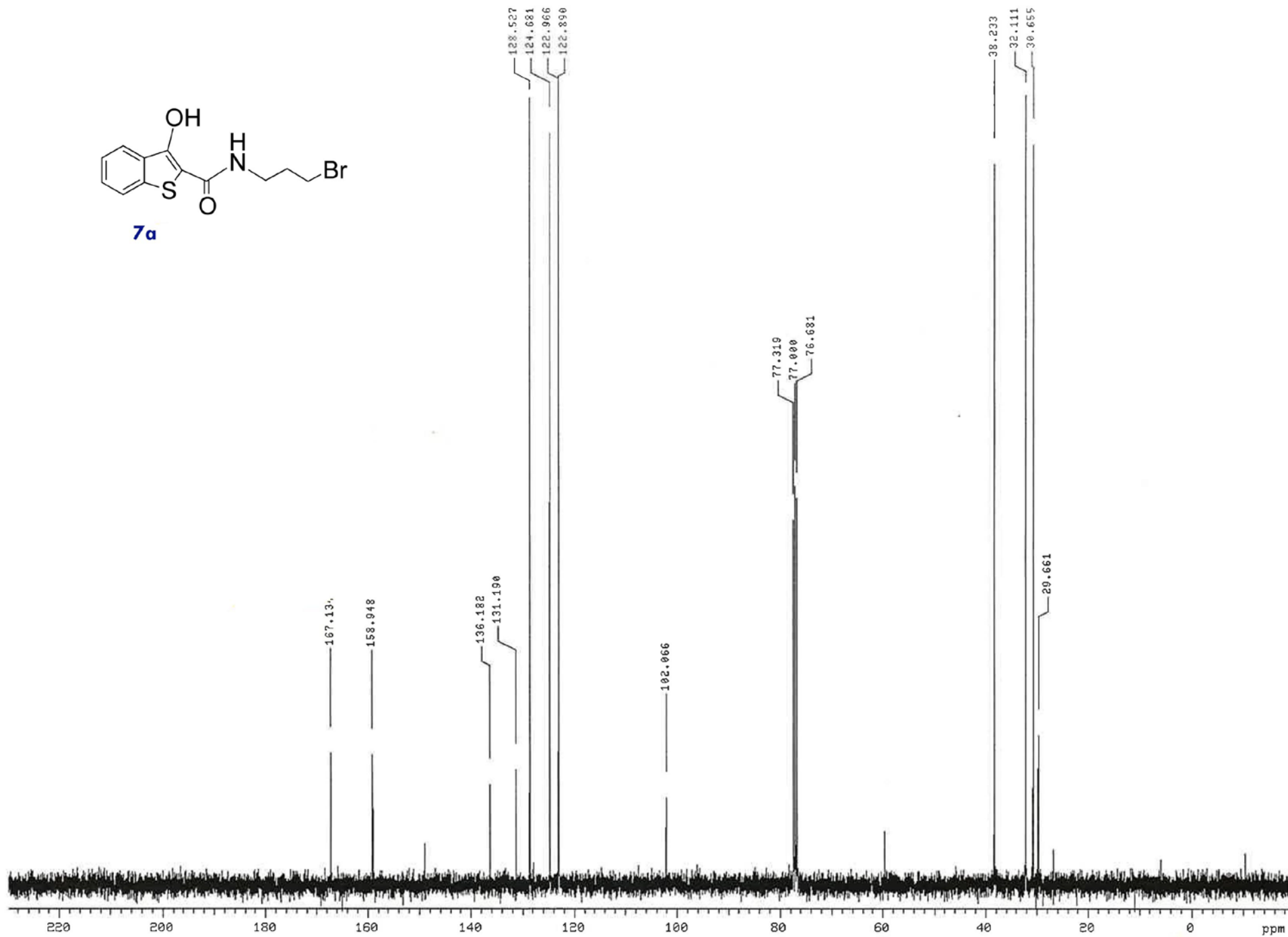
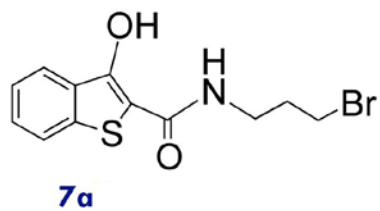


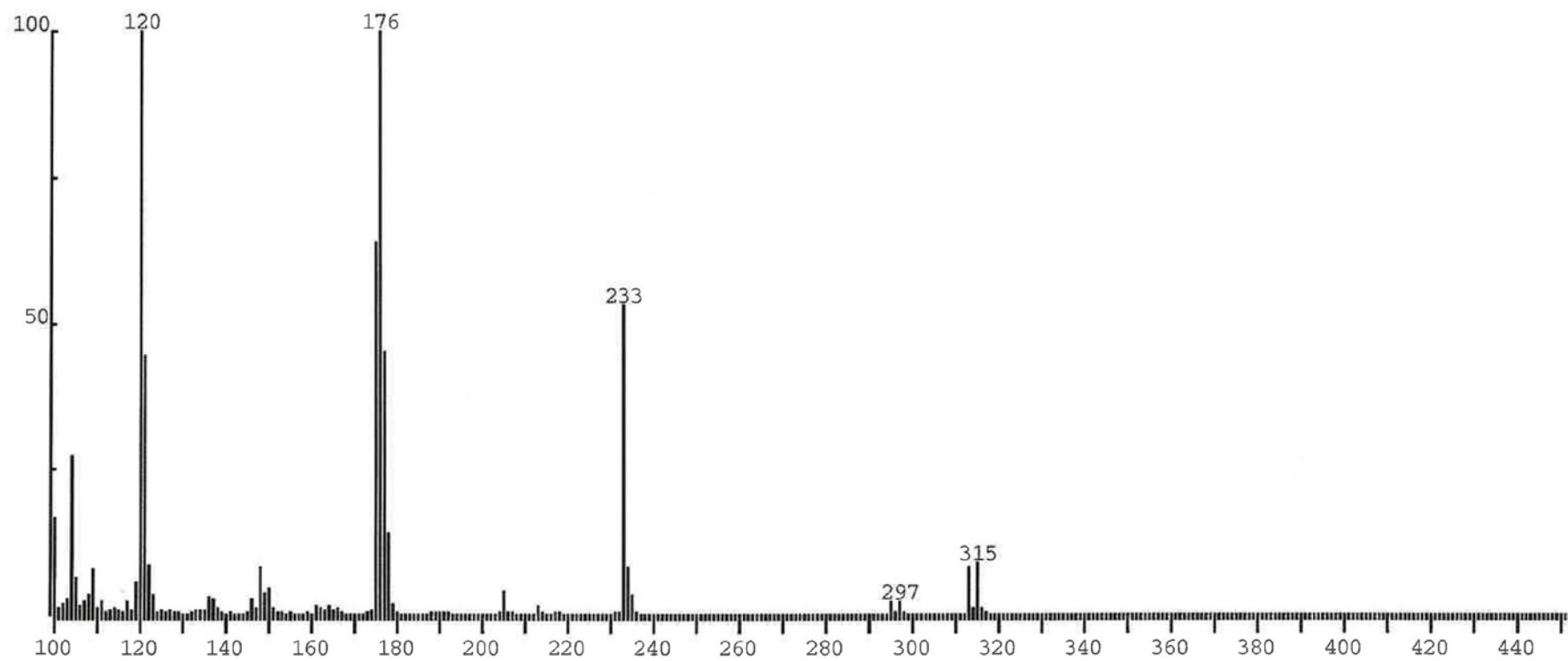
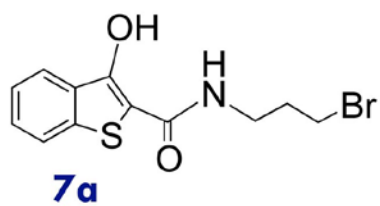
ZW2178 1 (0.564) Sm (Mn, 2x0.50)

Scan ES+
3.49e7

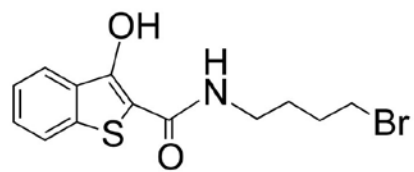




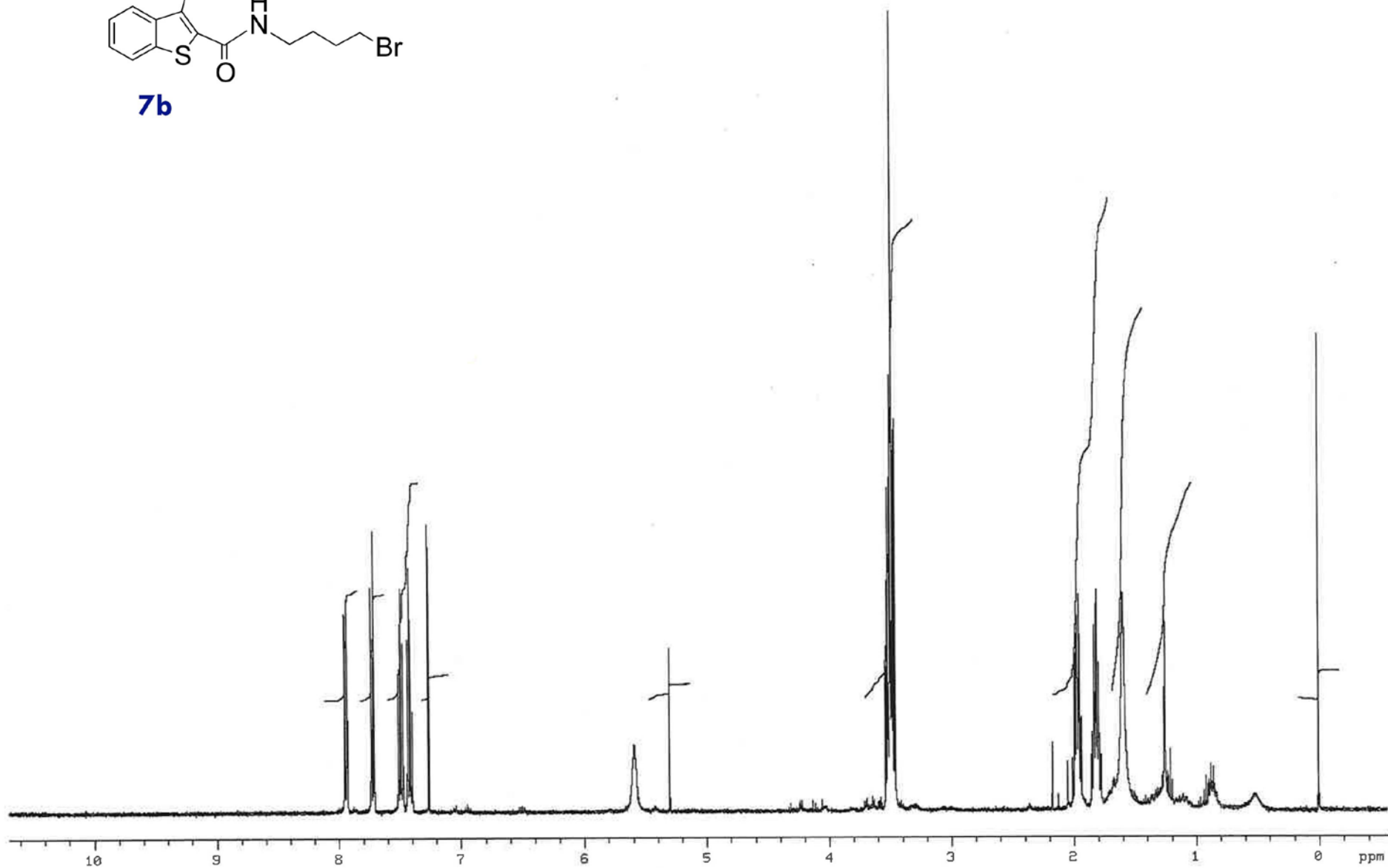


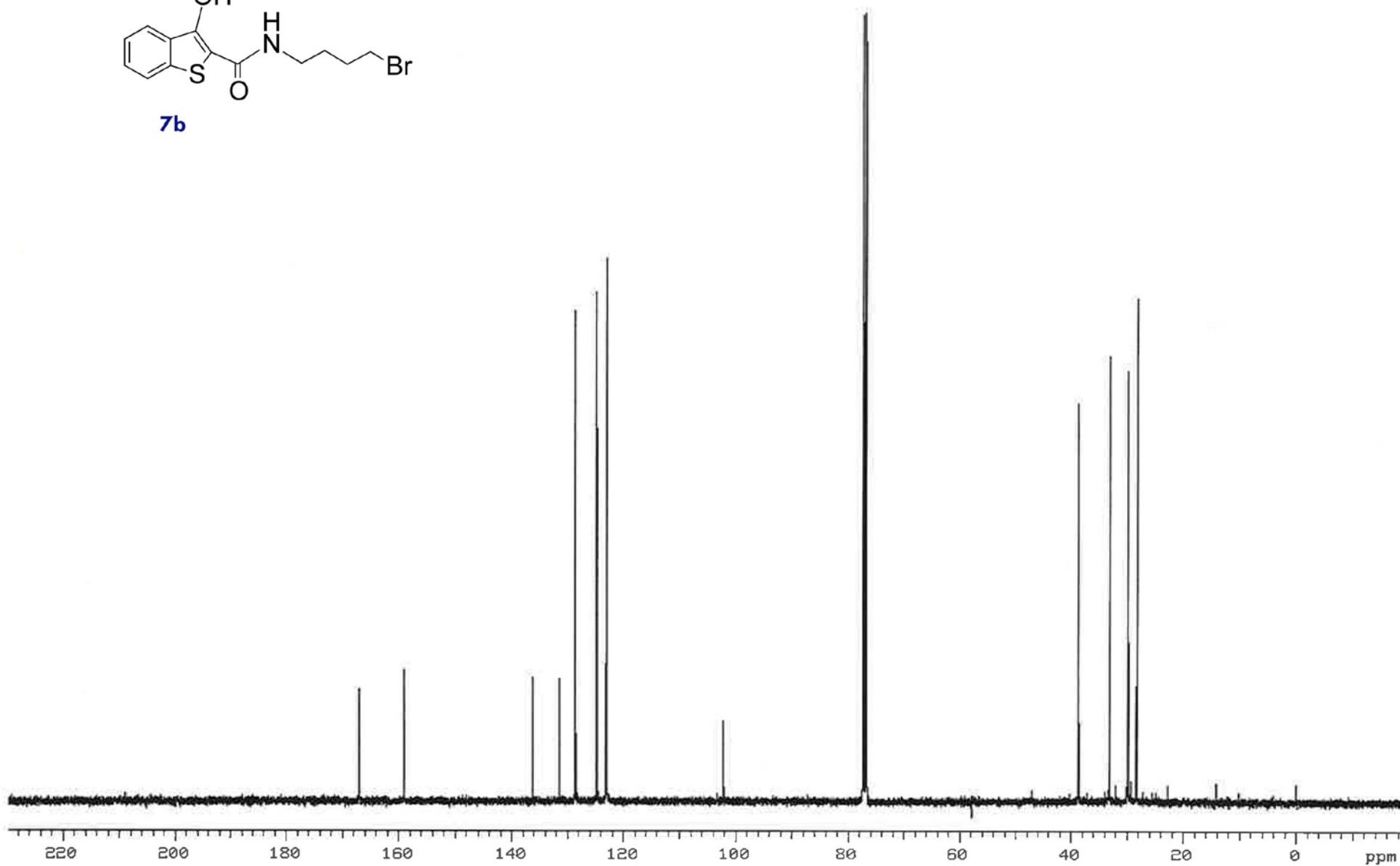
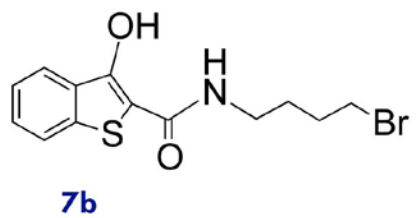


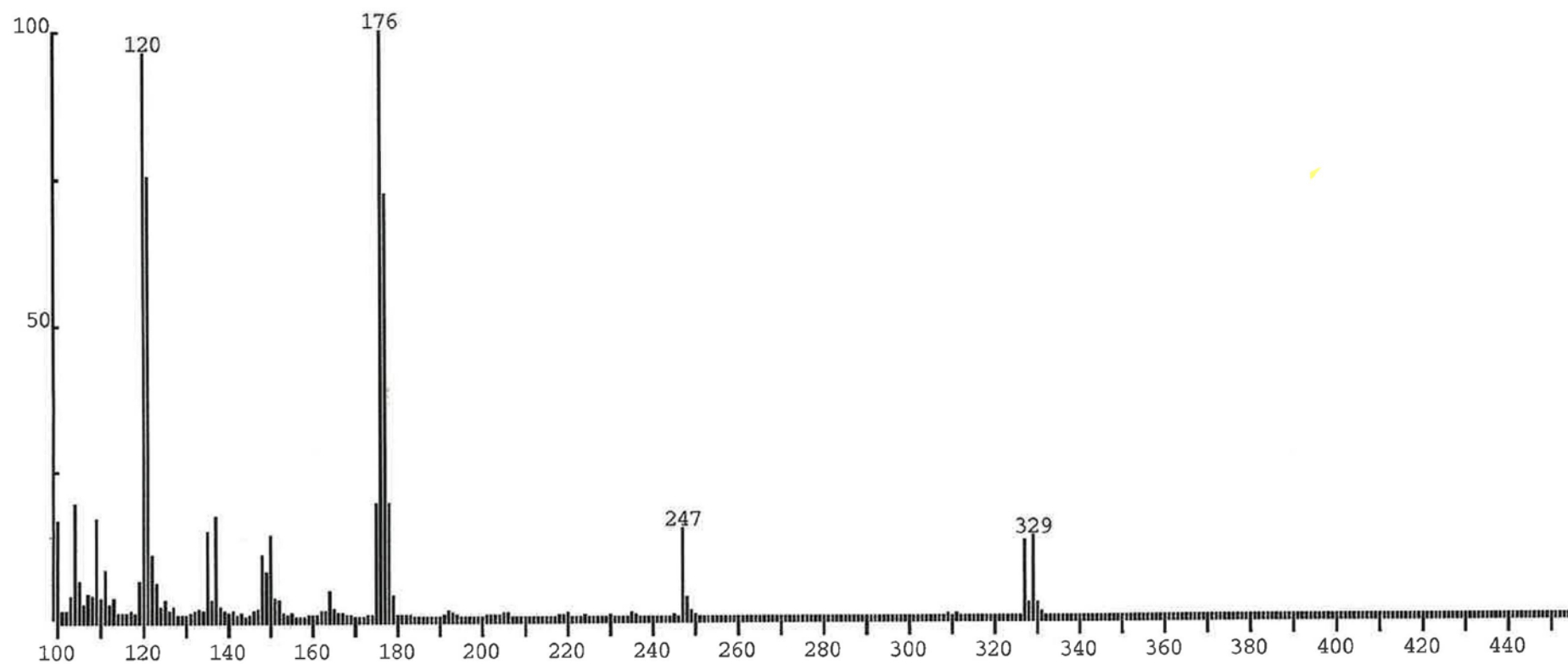
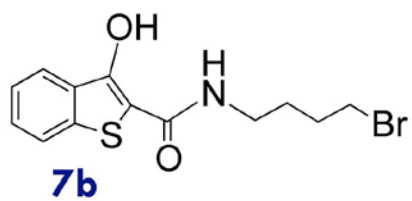
zm3-53 Spect. No. 15



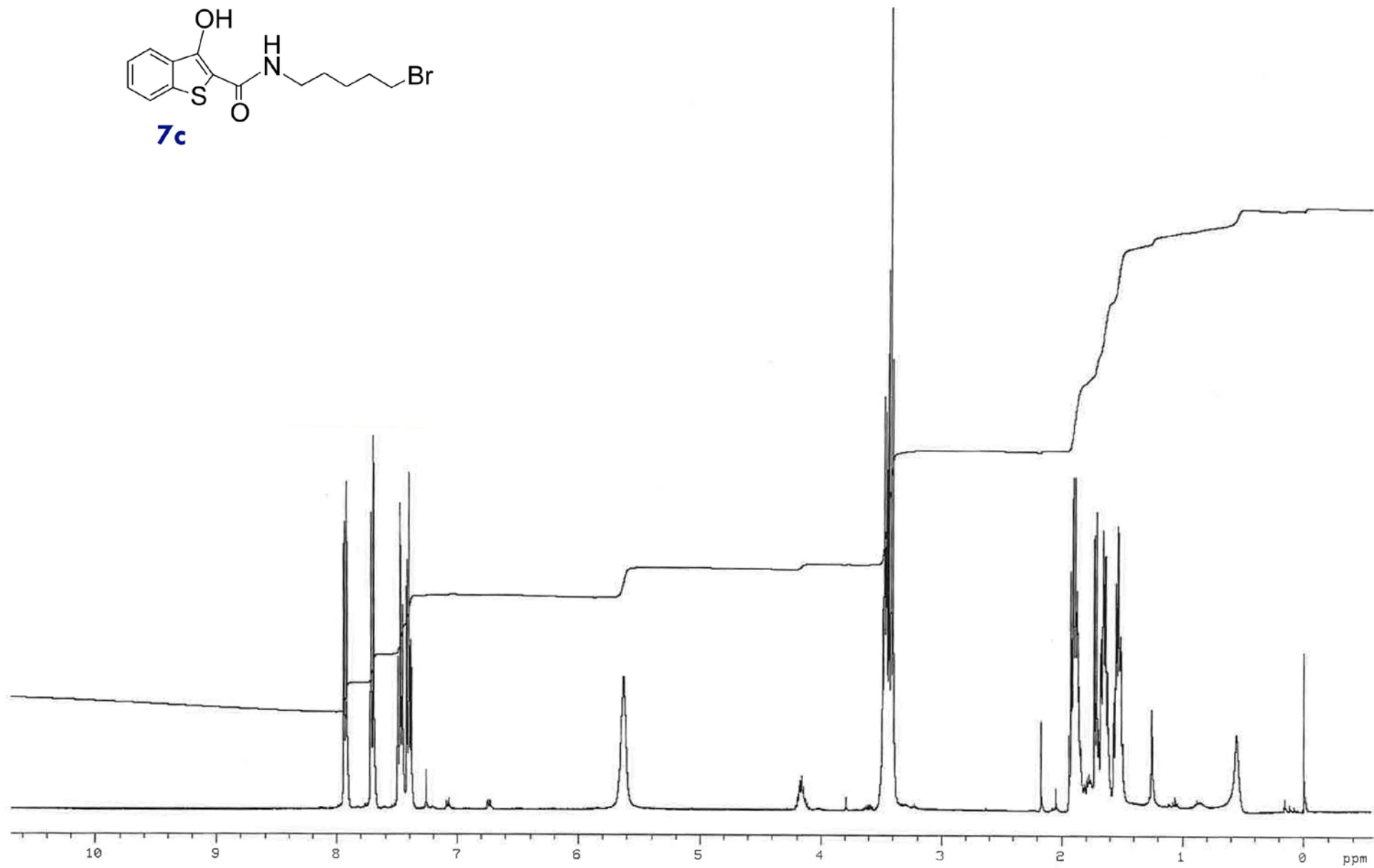
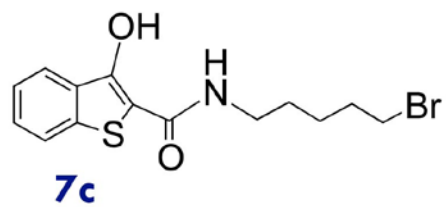
7b

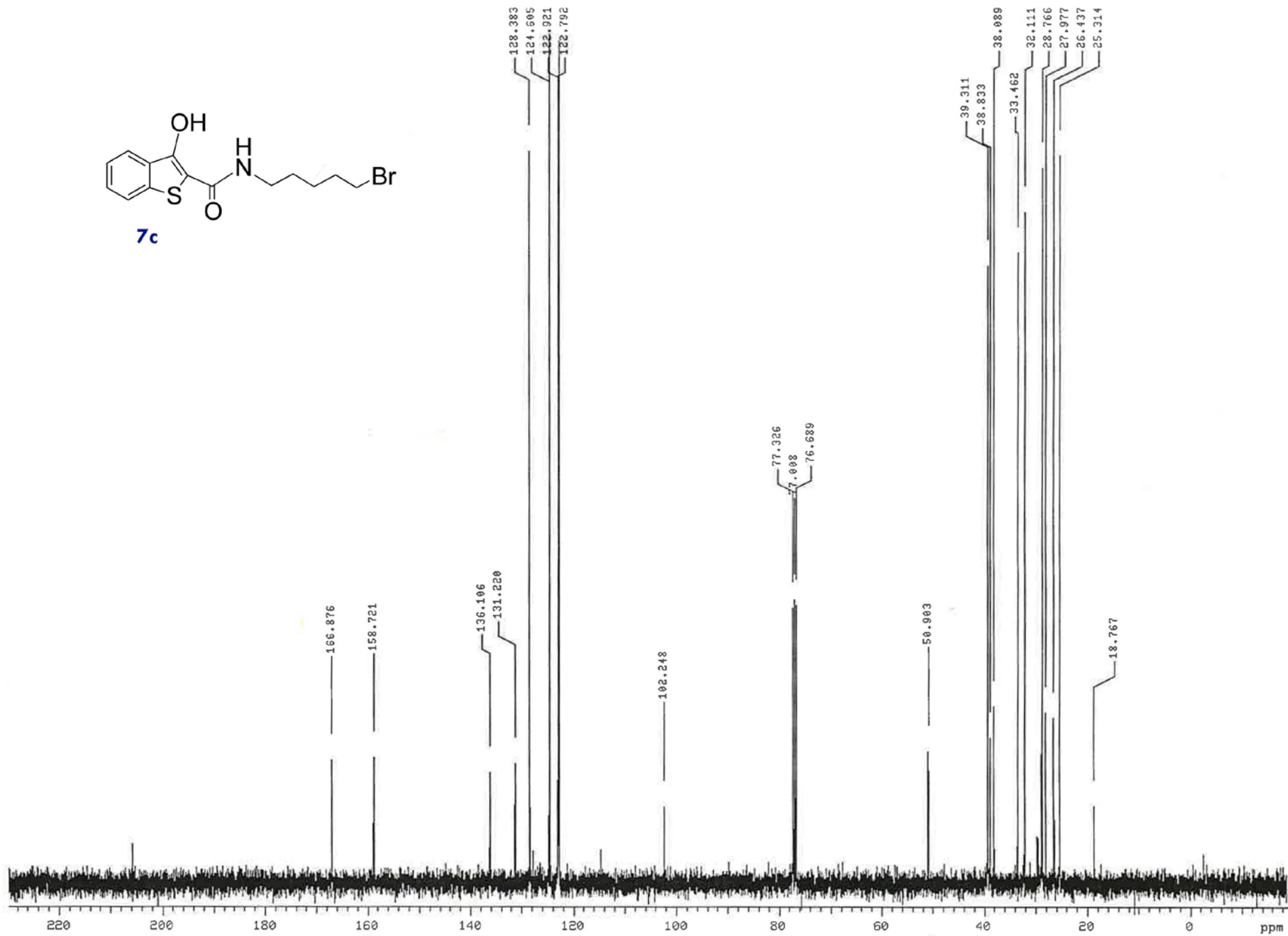
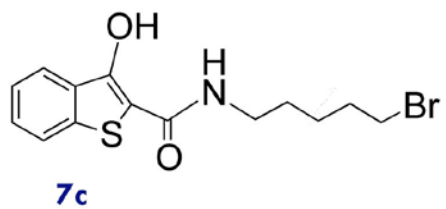






ZM3-25 Spect. No. 25

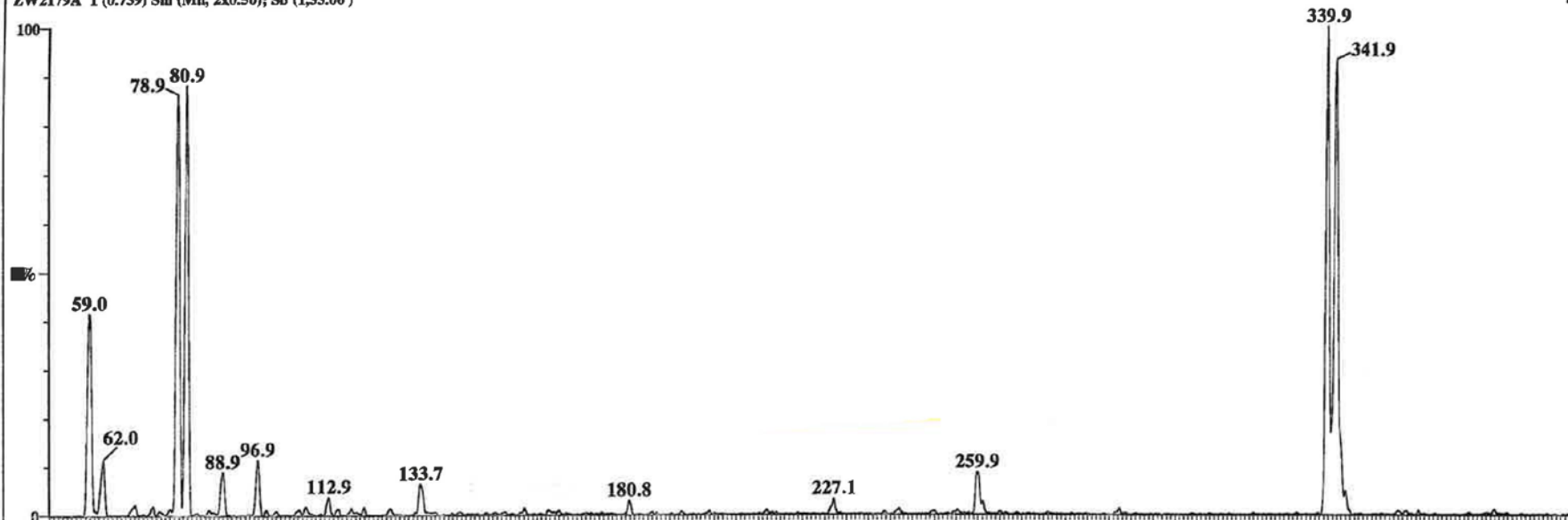




ZM3-49, res 12/14, B1=50V

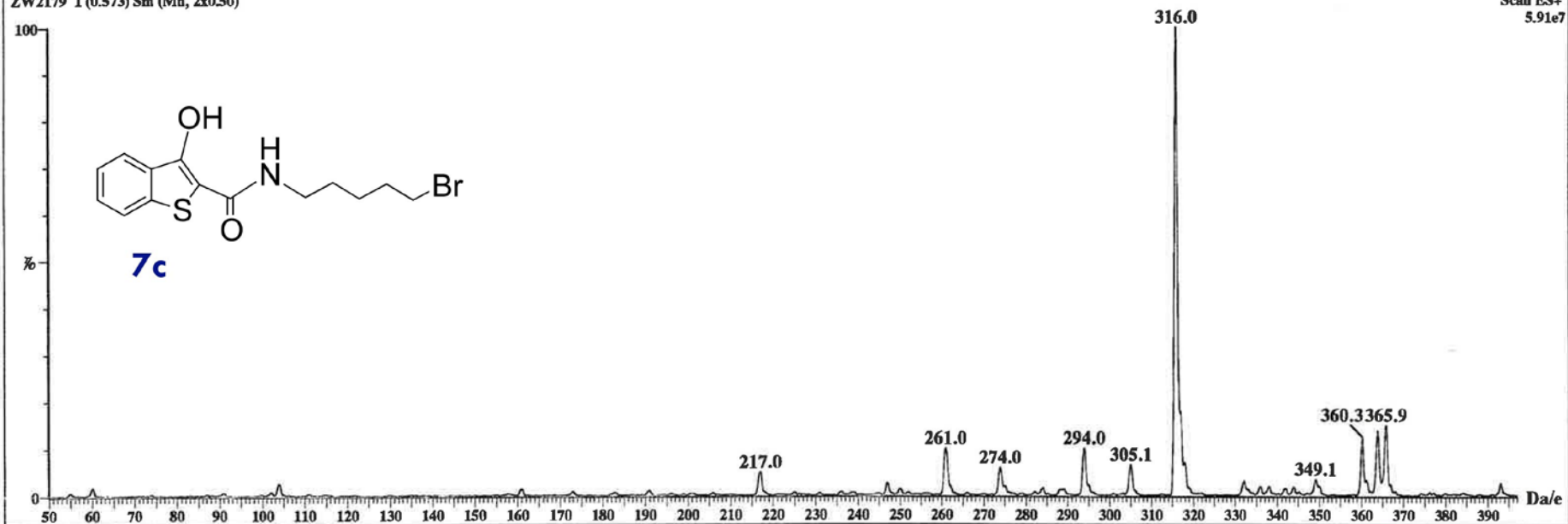
ZW2179A 1 (0.739) Sm (Mn, 2x0.50); Sb (1,33.00)

Scan ES-
4.83e6



ZW2179 1 (0.573) Sm (Mn, 2x0.50)

Scan ES+
5.91e7



7c