

Supplementary Material

Epoxidation of *trans*-4-Aminocyclohex-2-en-1-ol Derivatives: Competition of Hydroxyl-directed and Ammonium-directed Pathways

Méabh B. Brennan, Stephen G. Davies,* Ai M. Fletcher, James A. Lee,
Paul M. Roberts, Angela J. Russell and James E. Thomson

*Department of Chemistry, Chemistry Research Laboratory,
University of Oxford, Mansfield Road, Oxford OX1 3TA, U.K.*

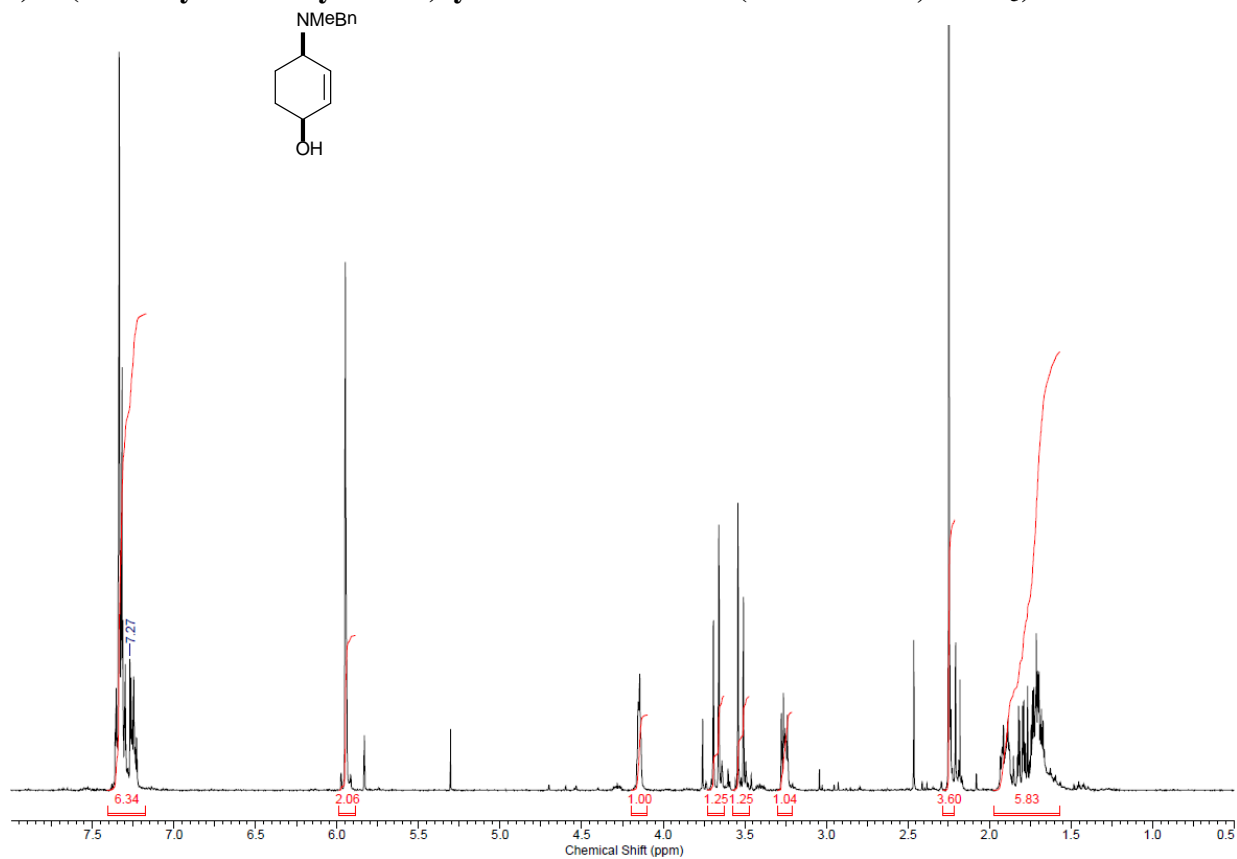
*steve.davies@chem.ox.ac.uk

Table of Contents

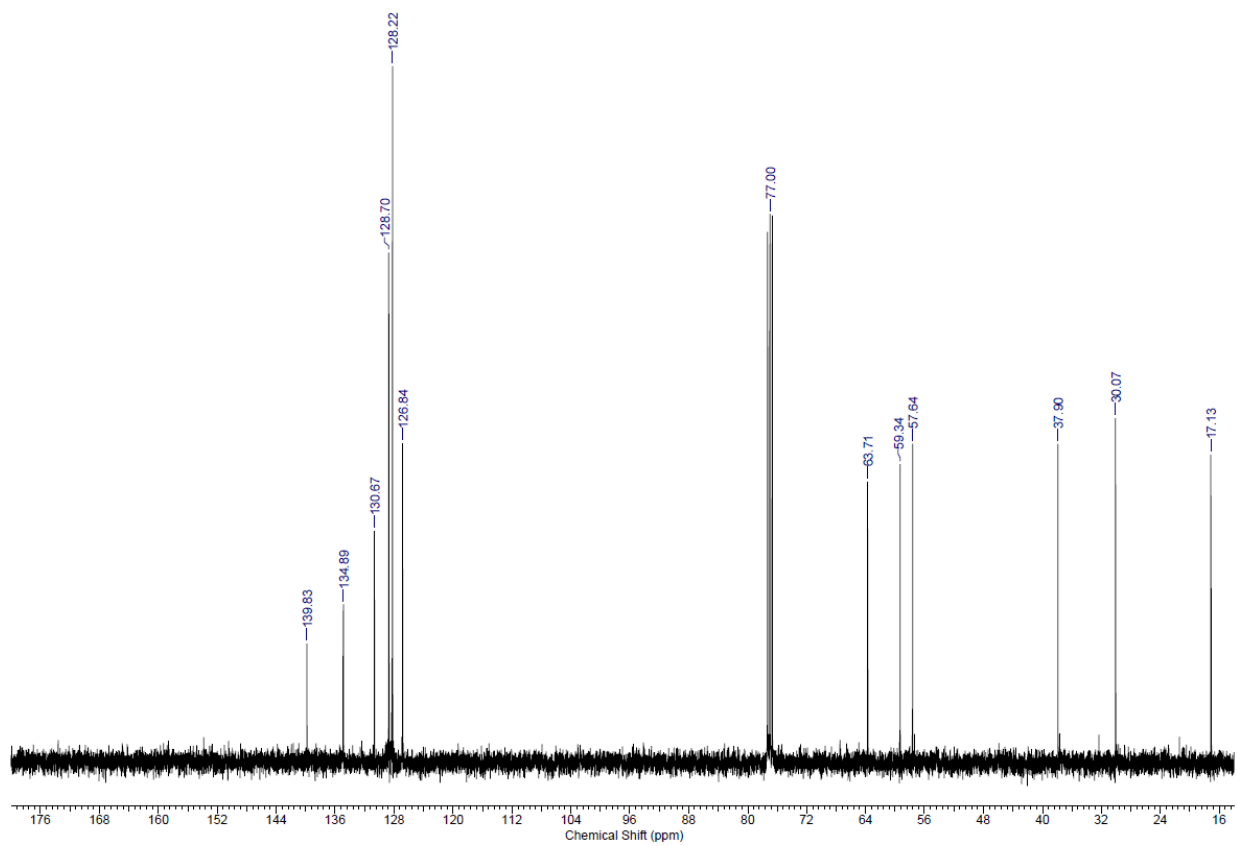
1. Copies of ¹ H and ¹³ C NMR Spectra	2-9
2. Thermal Ellipsoid Plots	10-11

1. Copies of ^1H and ^{13}C NMR Spectra

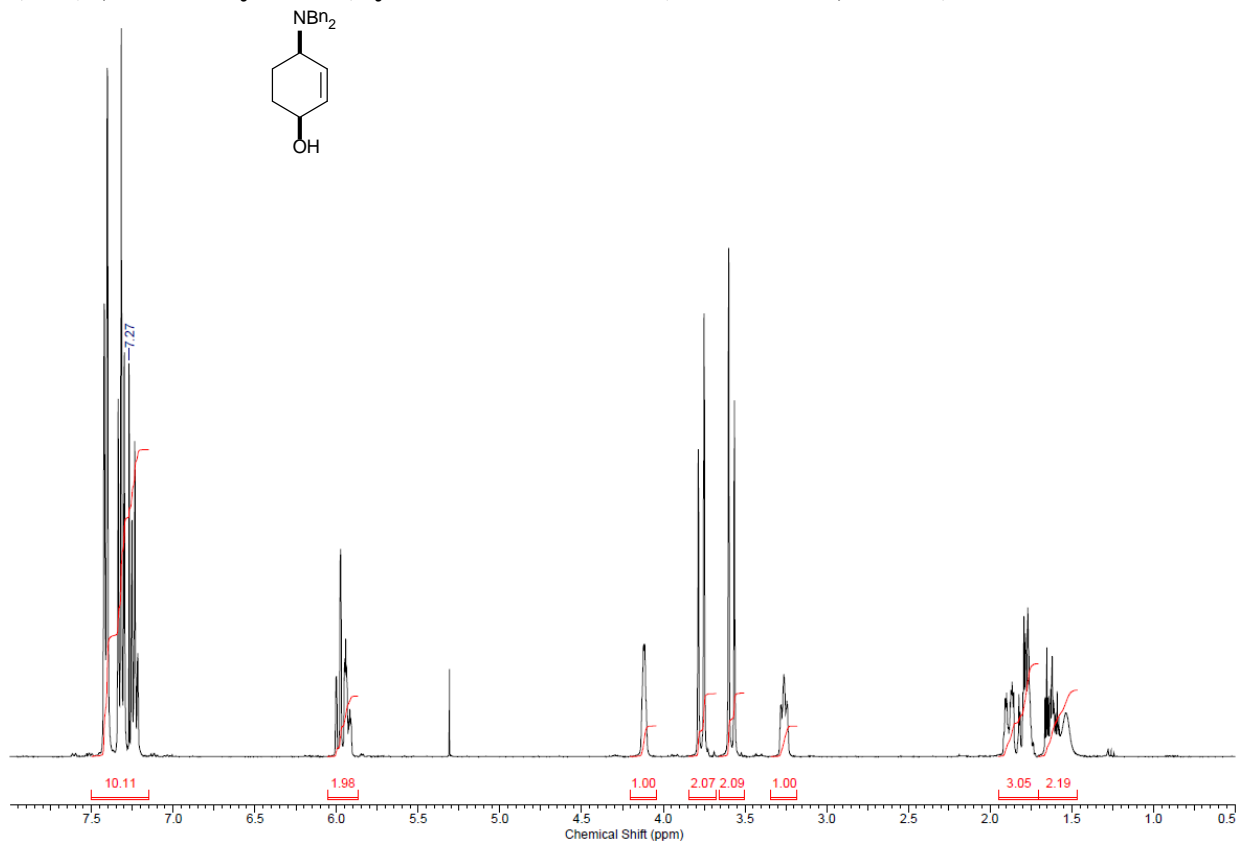
(*RS,SR*)-4-(*N*-Benzyl-*N*-methylamino)cyclohex-2-en-1-ol 31 (400 MHz ^1H , CDCl_3)



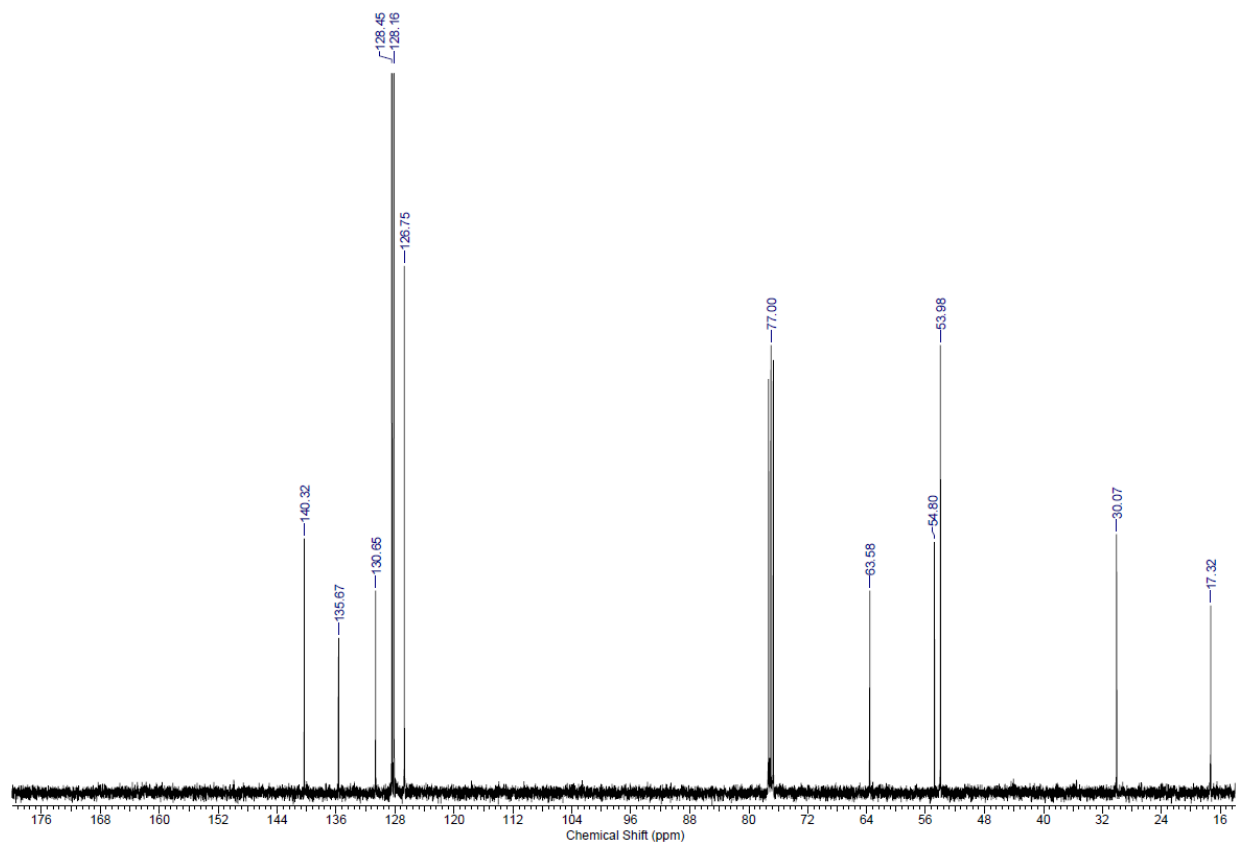
(*RS,SR*)-4-(*N*-Benzyl-*N*-methylamino)cyclohex-2-en-1-ol 31 (100 MHz ^{13}C , CDCl_3)



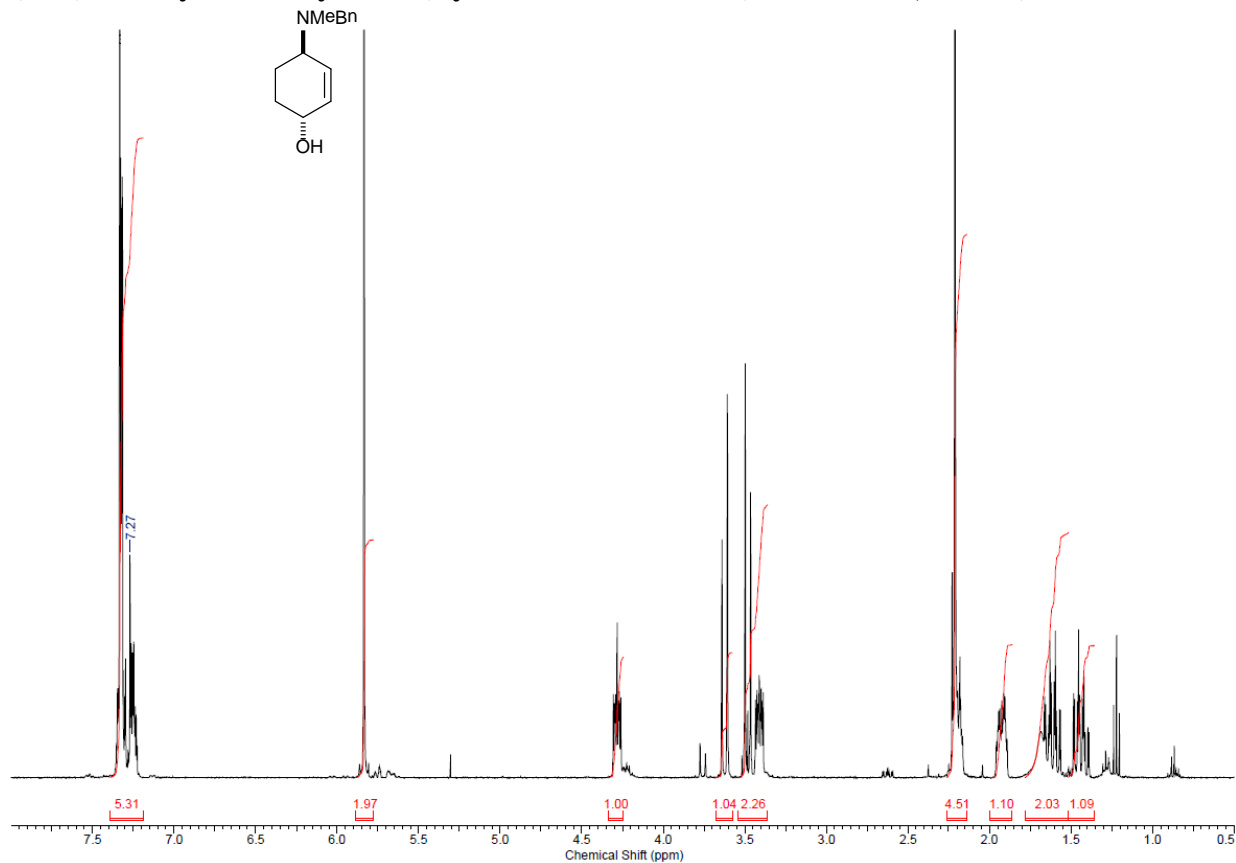
(*RS,SR*)-4-(*N,N*-Dibenzylamino)cyclohex-2-en-1-ol 32 (400 MHz ^1H , CDCl_3)



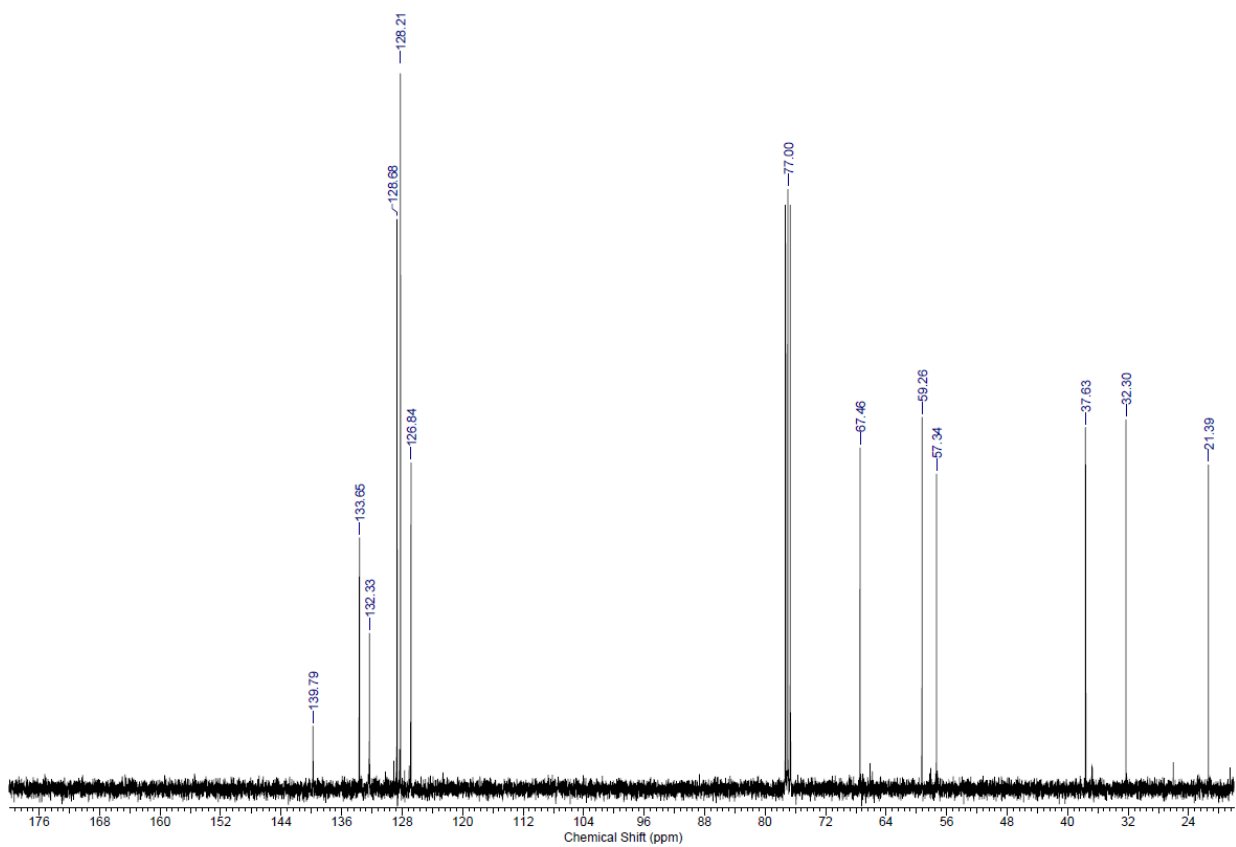
(*RS,SR*)-4-(*N,N*-Dibenzylamino)cyclohex-2-en-1-ol 32 (100 MHz ^{13}C , CDCl_3)



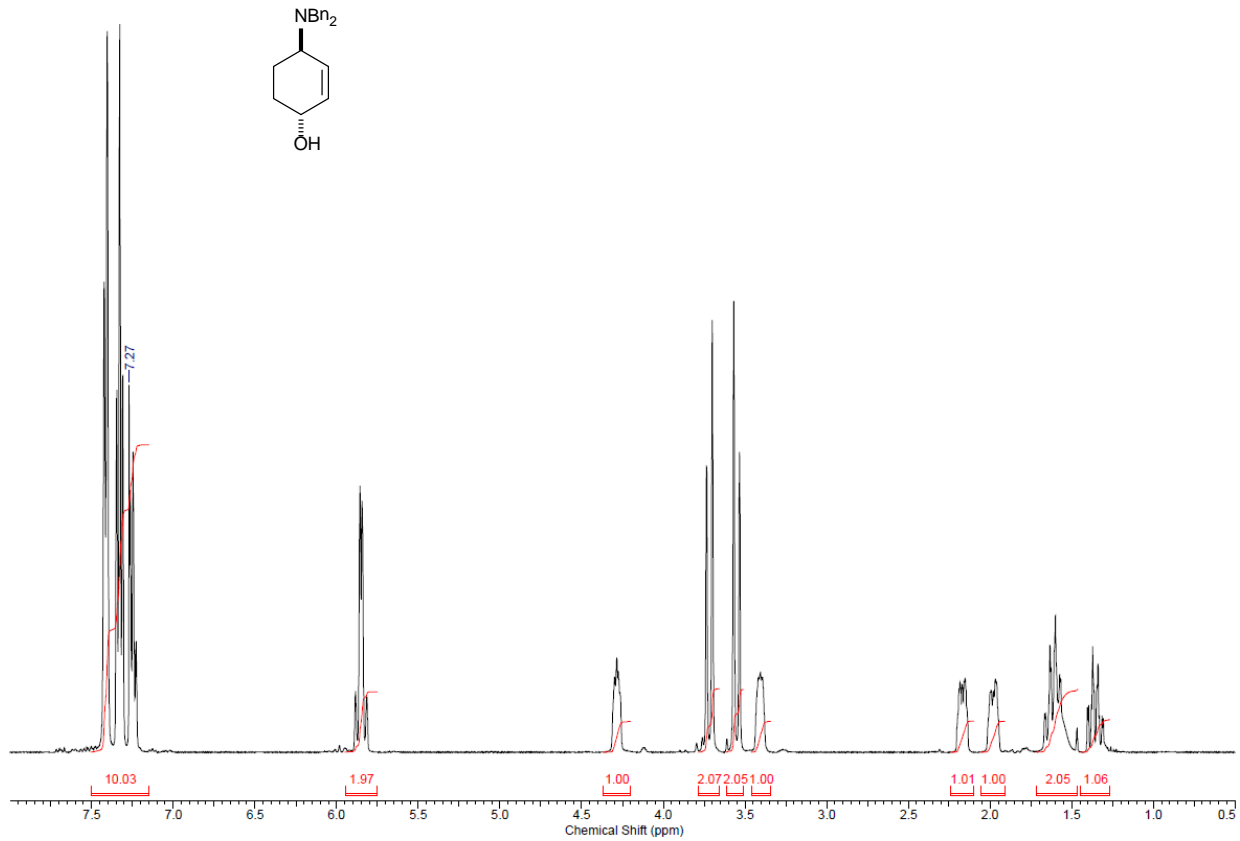
(*RS,RS*)-4-(*N*-Benzyl-*N*-methylamino)cyclohex-2-en-1-ol 37 (400 MHz ^1H , CDCl_3)



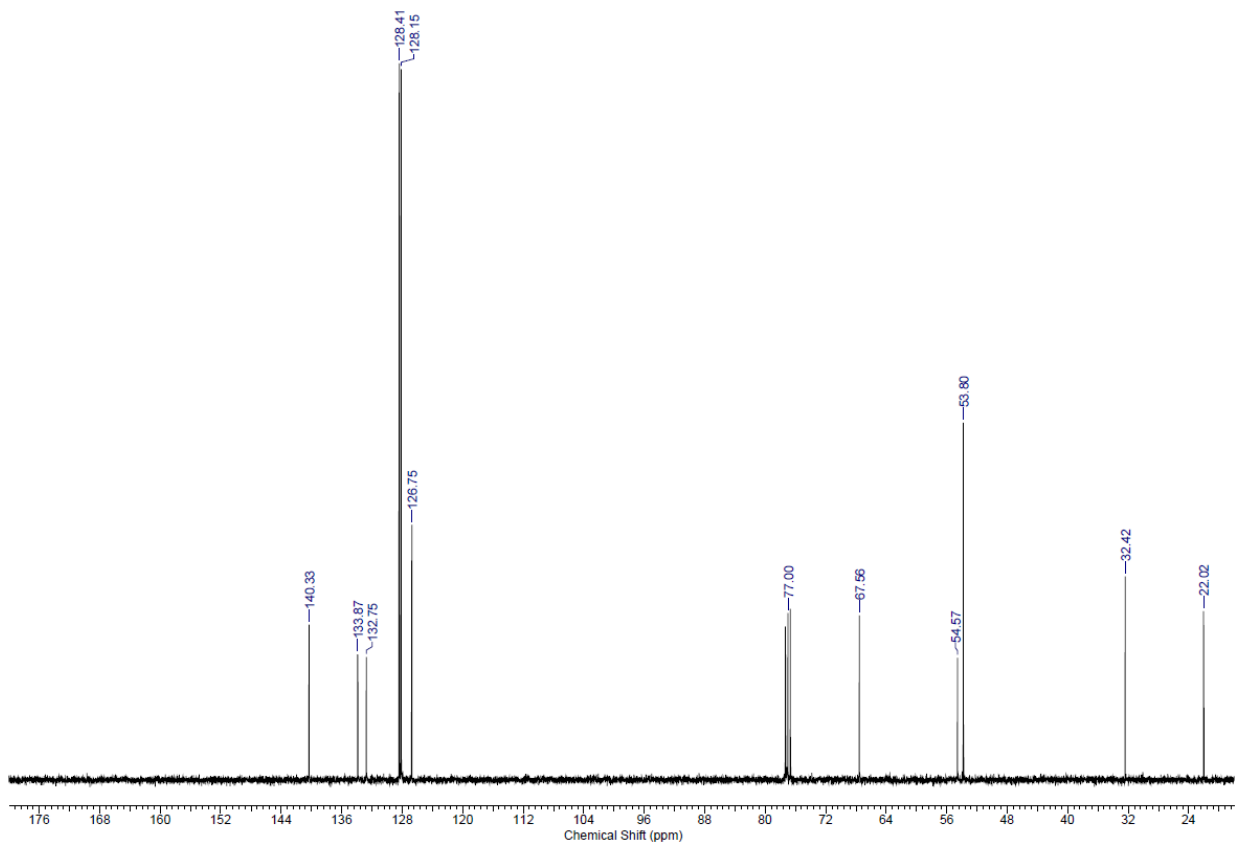
(*RS,RS*)-4-(*N*-Benzyl-*N*-methylamino)cyclohex-2-en-1-ol 37 (100 MHz ^{13}C , CDCl_3)



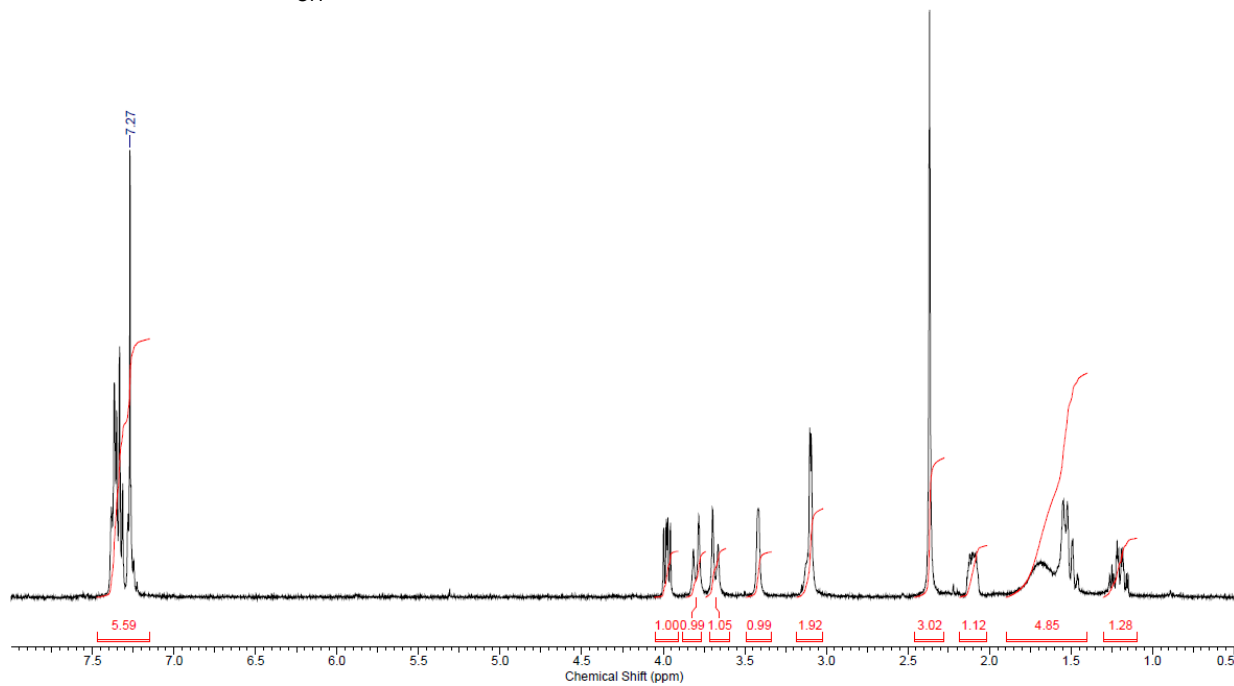
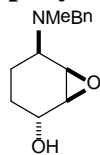
(*RS,RS*)-4-(*N,N*-Dibenzylamino)cyclohex-2-en-1-ol 38 (400 MHz ^1H , CDCl_3)



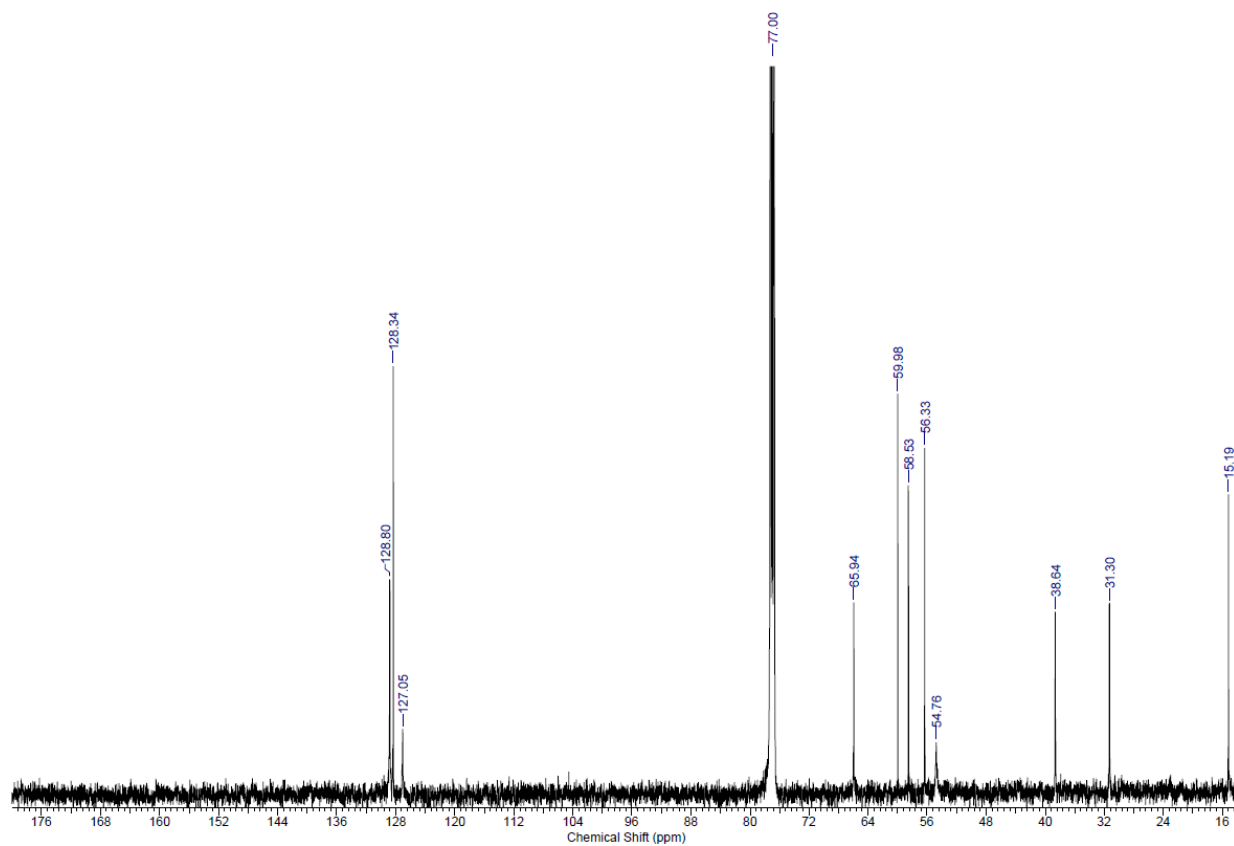
(*RS,RS*)-4-(*N,N*-Dibenzylamino)cyclohex-2-en-1-ol 38 (100 MHz ^{13}C , CDCl_3)



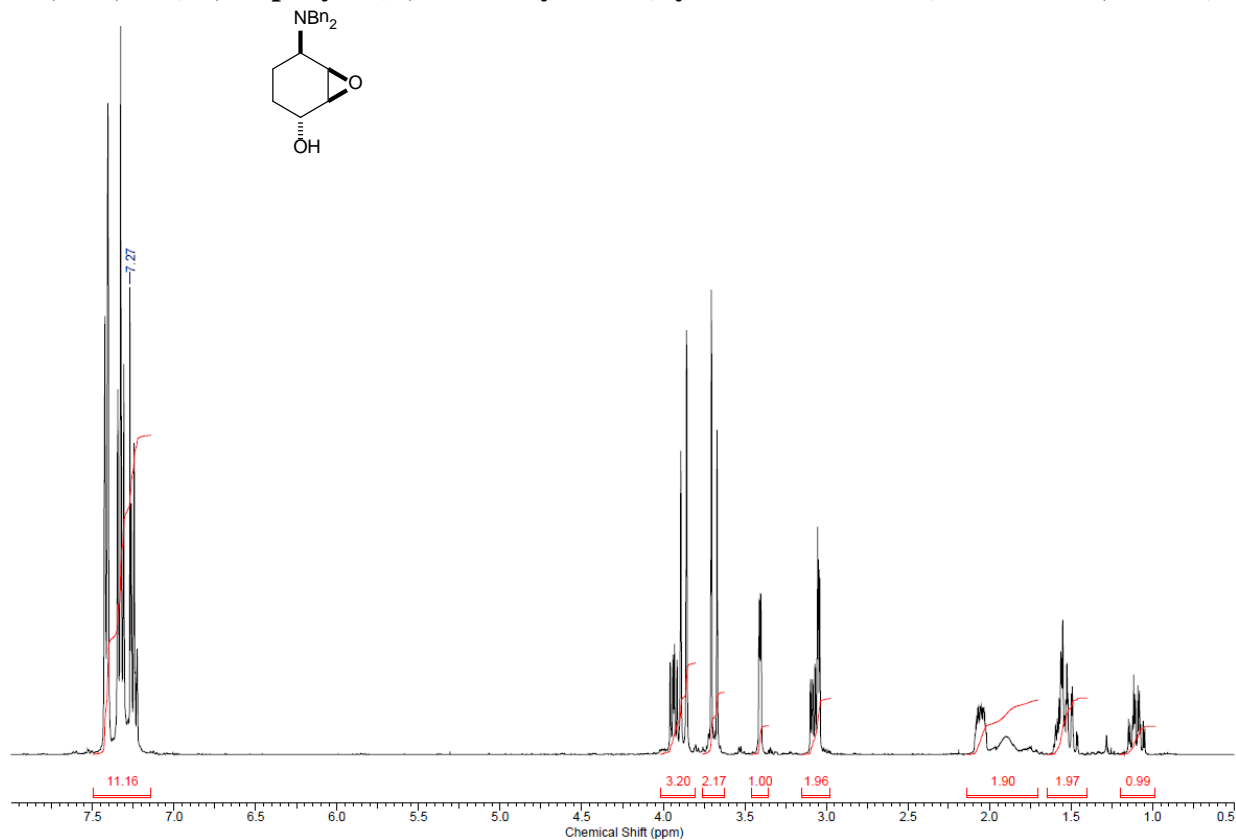
(1*RS*,2*SR*,3*RS*,4*RS*)-2,3-Epoxy-4-(*N*-benzyl-*N*-methylamino)cyclohexan-1-ol 49 (400 MHz ^1H , CDCl_3)



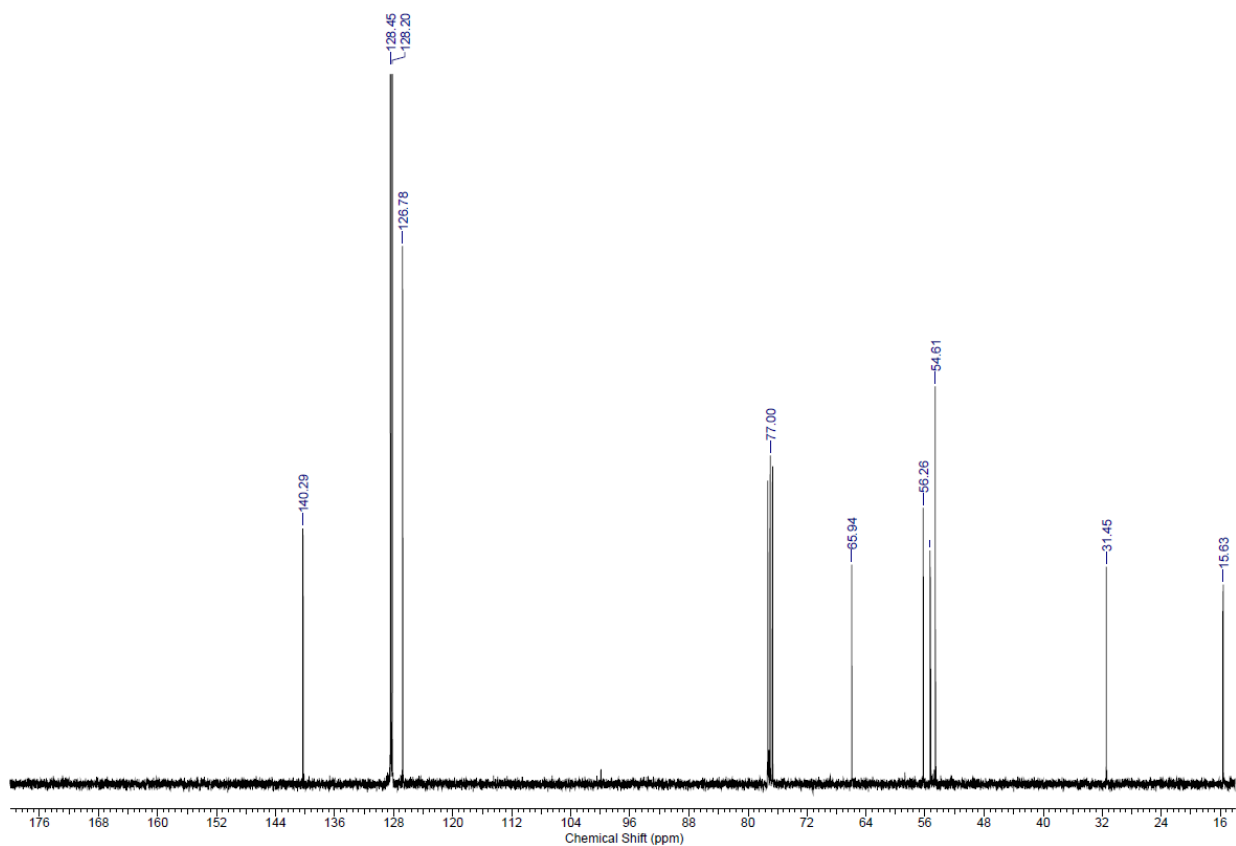
(1*RS*,2*SR*,3*RS*,4*RS*)-2,3-Epoxy-4-(*N*-benzyl-*N*-methylamino)cyclohexan-1-ol 49 (100 MHz ^{13}C , CDCl_3)



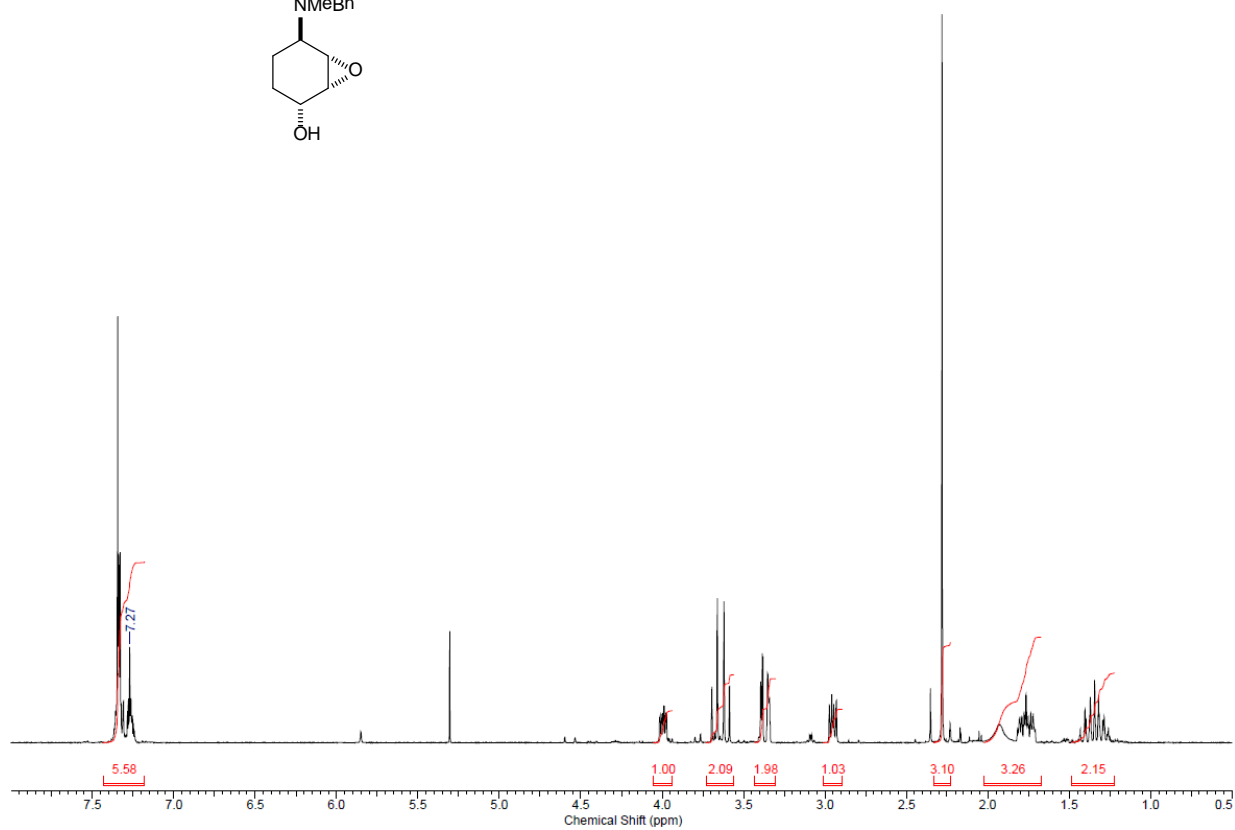
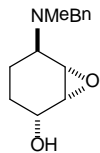
(1*RS*,2*SR*,3*RS*,4*RS*)-2,3-Epoxy-4-(*N,N*-dibenzylamino)cyclohexan-1-ol 50 (400 MHz ¹H, CDCl₃)



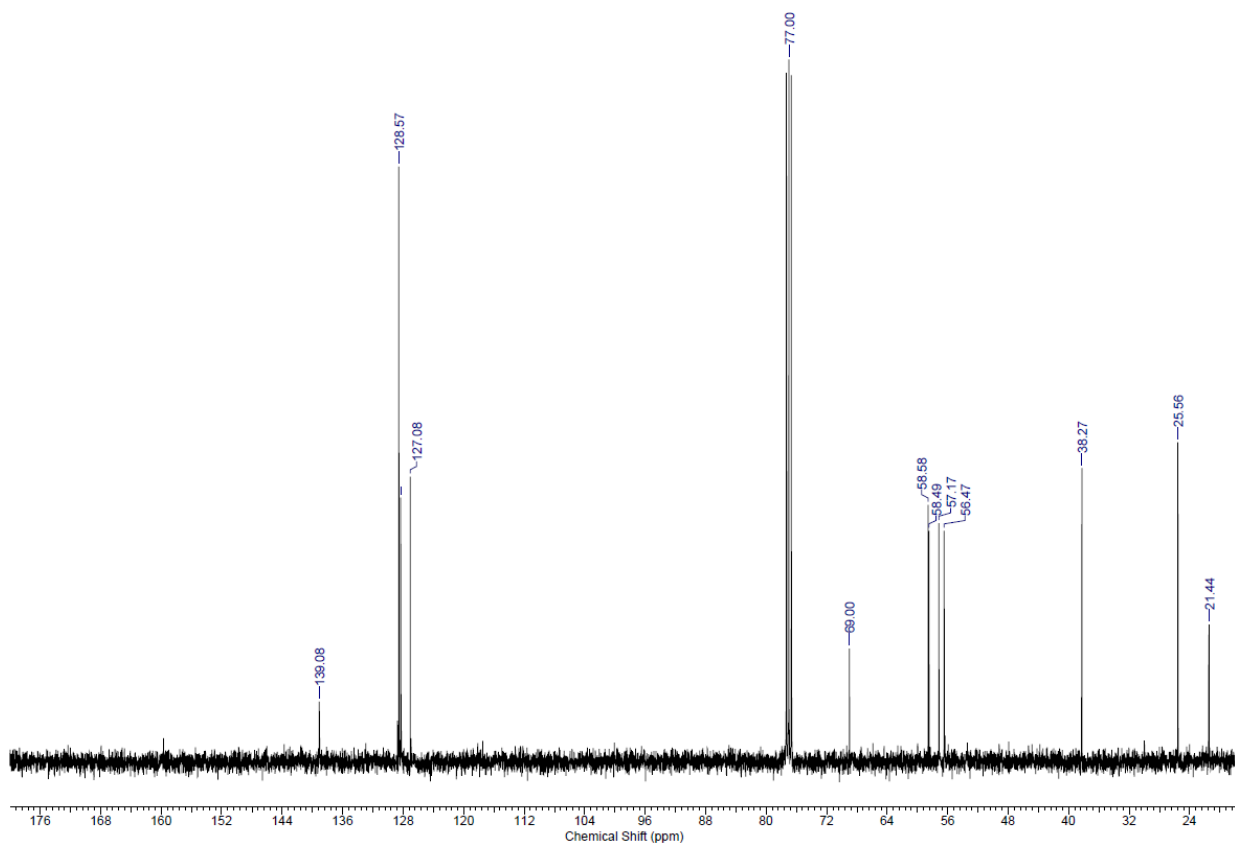
(1*RS*,2*SR*,3*RS*,4*RS*)-2,3-Epoxy-4-(*N,N*-dibenzylamino)cyclohexan-1-ol 50 (100 MHz ¹³C, CDCl₃)



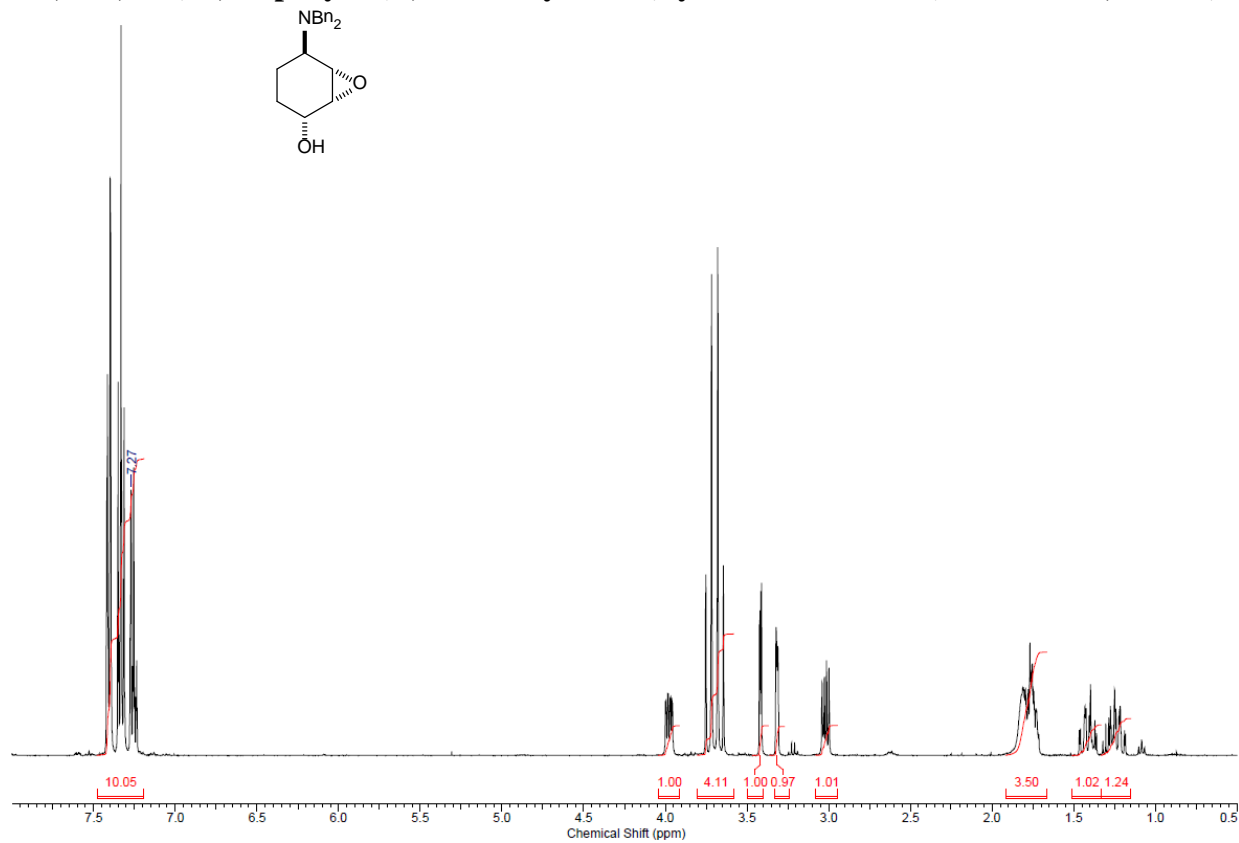
(1*RS*,2*RS*,3*SR*,4*RS*)-2,3-Epoxy-4-(*N*-benzyl-*N*-methylamino)cyclohexan-1-ol 52 (400 MHz ¹H, CDCl₃)



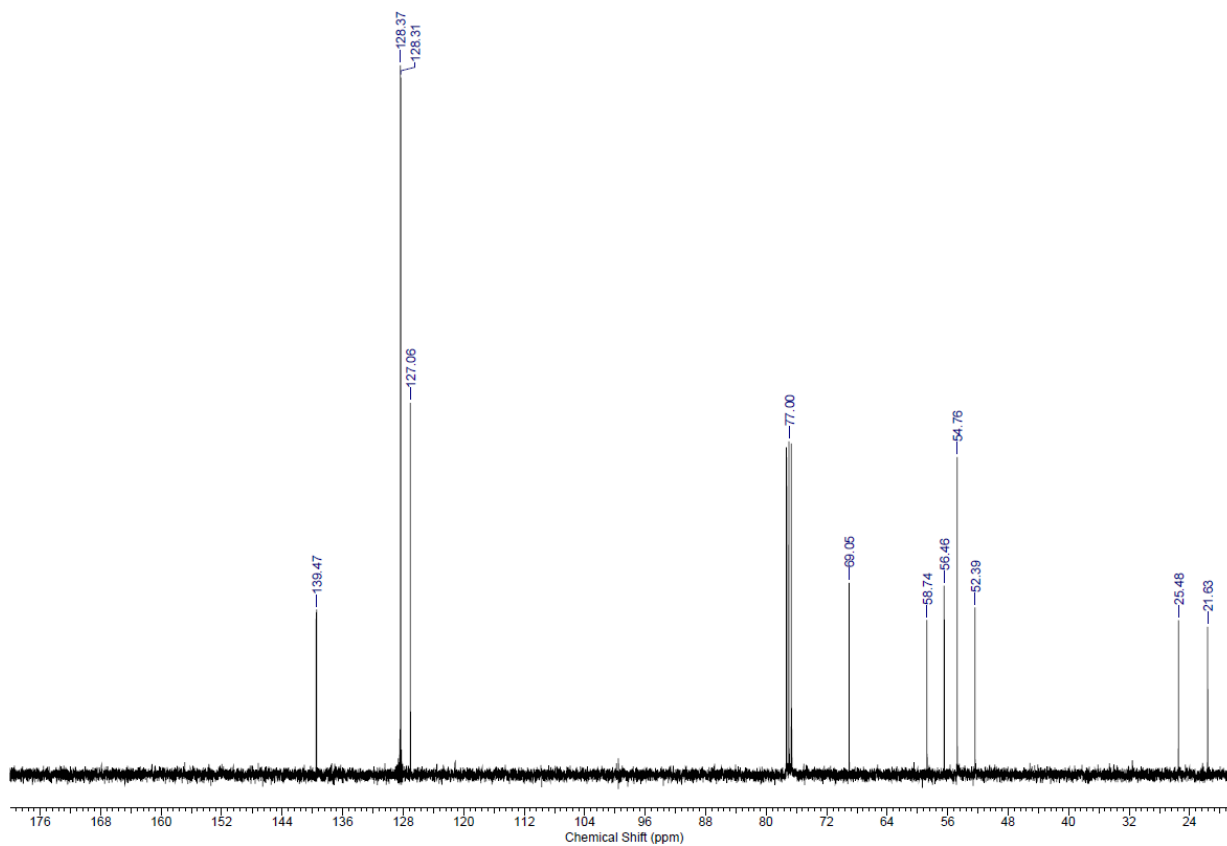
(1*RS*,2*RS*,3*SR*,4*RS*)-2,3-Epoxy-4-(*N*-benzyl-*N*-methylamino)cyclohexan-1-ol 52 (100 MHz ¹³C, CDCl₃)



(1*RS*,2*RS*,3*SR*,4*RS*)-2,3-Epoxy-4-(*N,N*-dibenzylamino)cyclohexan-1-ol 53 (400 MHz ¹H, CDCl₃)

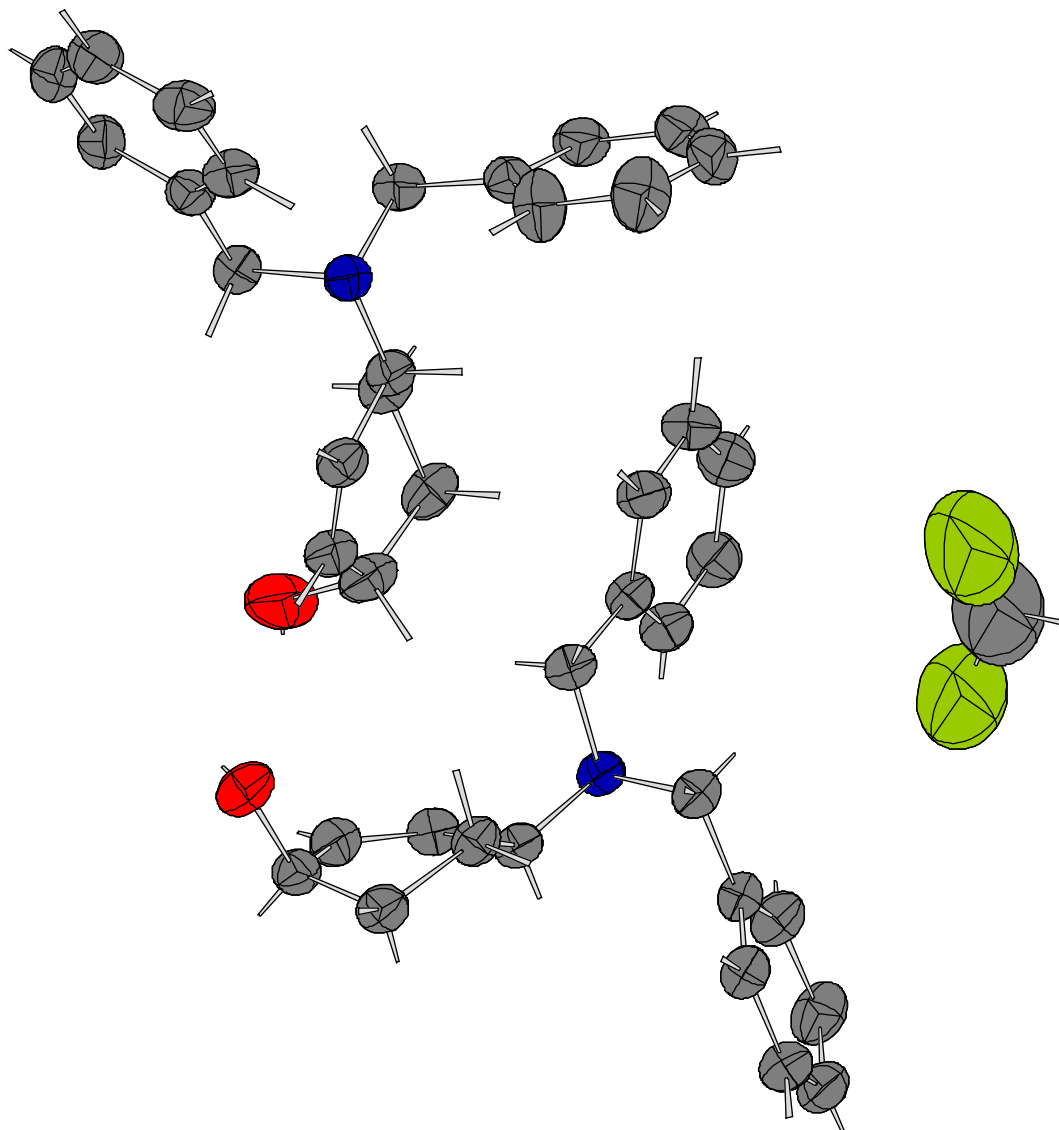


(1*RS*,2*RS*,3*SR*,4*RS*)-2,3-Epoxy-4-(*N,N*-dibenzylamino)cyclohexan-1-ol 53 (100 MHz ¹³C, CDCl₃)



2. Thermal Ellipsoid Plots

Thermal ellipsoid plot for *(RS,SR)*-4-(*N,N*-dibenzylamino)cyclohex-2-en-1-ol 32



Thermal ellipsoid plot for (1*RS*,2*RS*,3*SR*,4*RS*)-2,3-epoxy-4-(*N,N*-dibenzylamino)cyclohexan-1-ol 53

