

## Supplementary Material

### **Combining mitochondrial DNA and morphological data to delineate four new millipede species and provisional assignment to the genus *Apeuthes* Hoffman & Keeton (Diplopoda : Spirobolida : Pachybolidae : Trigoniulinae)**

*Piyatida Pimvichai*<sup>A,\*</sup>, *Somsak Panha*<sup>B</sup> and *Thierry Backeljau*<sup>C,D</sup>

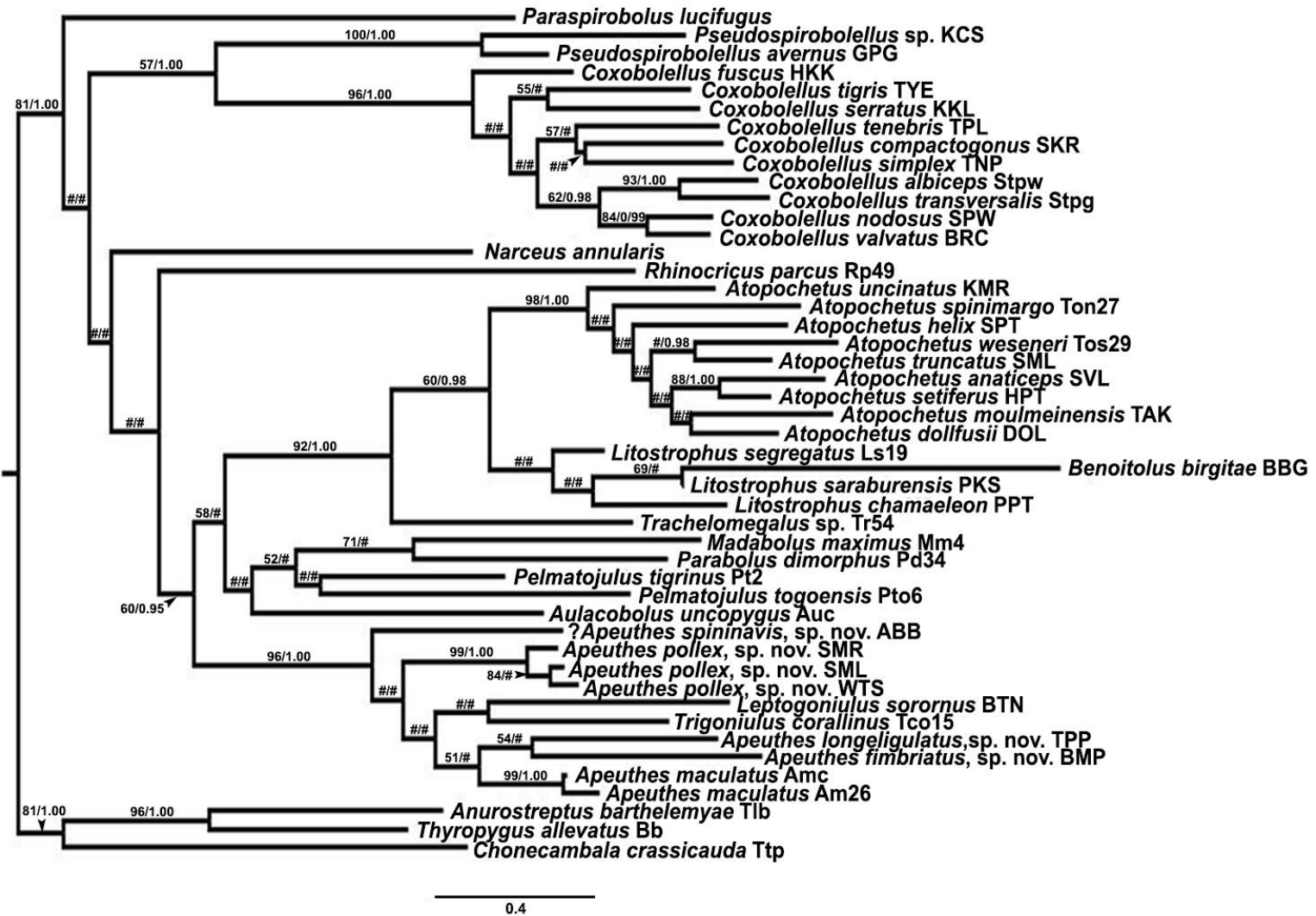
<sup>A</sup>Department of Biology, Faculty of Science, Mahasarakham University, Maha Sarakham 44150, Thailand.

<sup>B</sup>Animal Systematics Research Unit, Department of Biology, Faculty of Science, Chulalongkorn University, Bangkok 10330, Thailand.

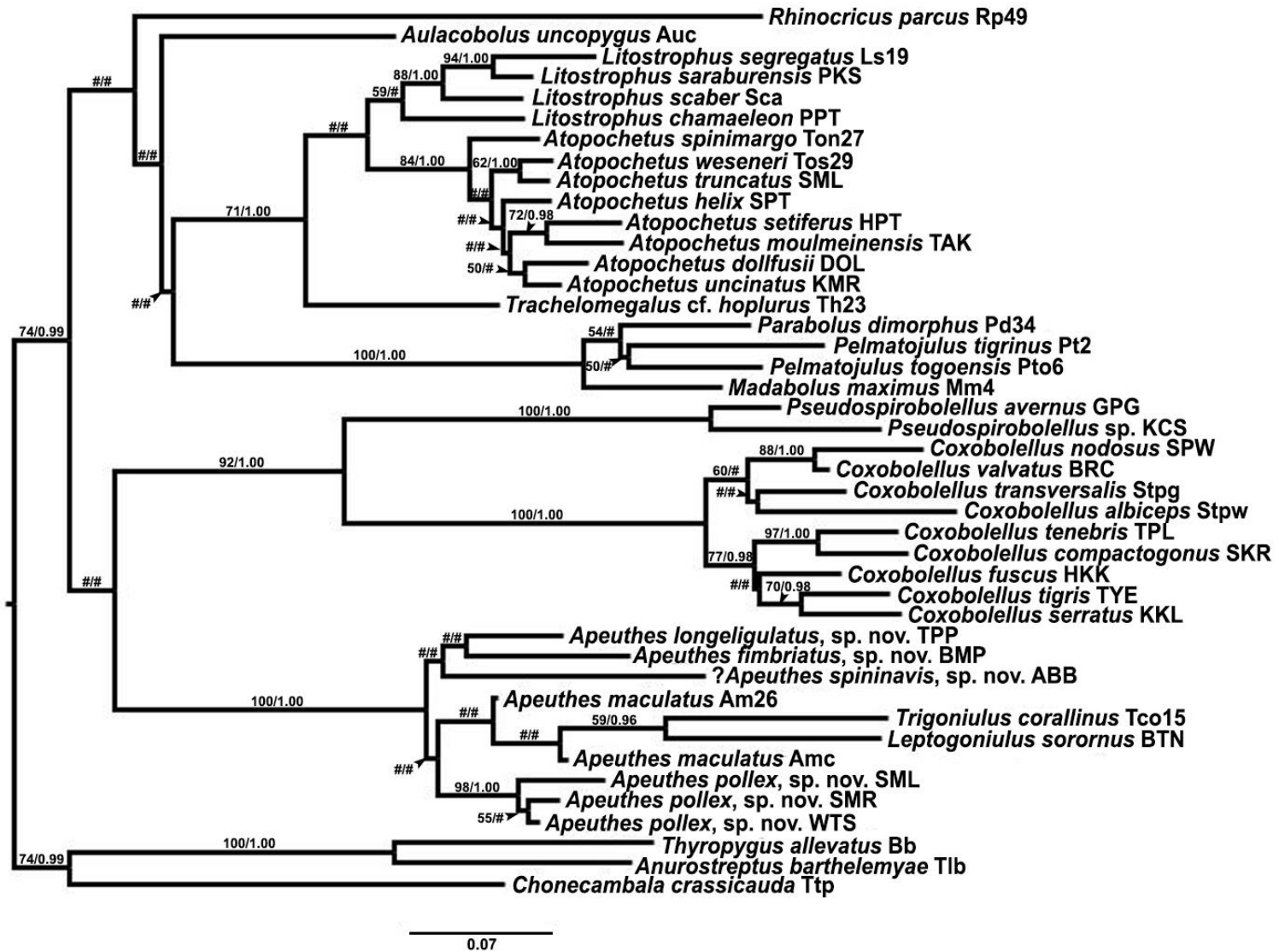
<sup>C</sup>Royal Belgian Institute of Natural Sciences, Vautierstraat 29, BE-1000 Brussels, Belgium.

<sup>D</sup>Evolutionary Ecology Group, University of Antwerp, Universiteitsplein 1, BE-2610 Antwerp, Belgium

\*Correspondence to: Email: [piyatida.p@msu.ac.th](mailto:piyatida.p@msu.ac.th)



**Fig. S1.** Phylogenetic relationships of the subfamily Trigoniulinae based on maximum likelihood analysis (ML) and Bayesian Inference (BI) of 660 bp of cytochrome *c* oxidase I (*COI*). Numbers at nodes indicate branch support based on bootstrapping (ML) and posterior probabilities (BI). Scale bar: 0.4 substitutions per site. The number sign (#) indicates branches with <50% ML bootstrap support and <0.95 Bayesian posterior probability.



**Fig. S2.** Phylogenetic relationships of the subfamily Trigoniulinae based on maximum likelihood analysis (ML) and Bayesian Inference (BI) of *16S* ribosomal RNA (458 bp). Numbers at nodes indicate branch support based on bootstrapping (ML) and posterior probabilities (BI). Scale bar: 0.07 substitutions per site. The number sign (#) indicates branches with <50% ML bootstrap support and <0.95 Bayesian posterior probability.