

Supplementary Material for

Trends in presentations to a private emergency department during the first and second waves of the COVID-19 pandemic in Australia

Nisal Punchihewa^{1,5,6} MD, Junior Medical Staff

*David Rankin*² MBChB, Director of Clinical Governance and Informatics

*Michael Ben-Meir*¹ MBBS, Emergency Physician

Lisa Brichko^{1,3,4} MBBS(Hons), Emergency Physician

*Ian Turner*¹ MBBS, Emergency Physician

¹Emergency Department, Cabrini Health, Melbourne, Vic., Australia. Email: mhenmeir@cabrini.com.au; lisabrichko@cabrini.com.au, iturner@cabrini.com.au

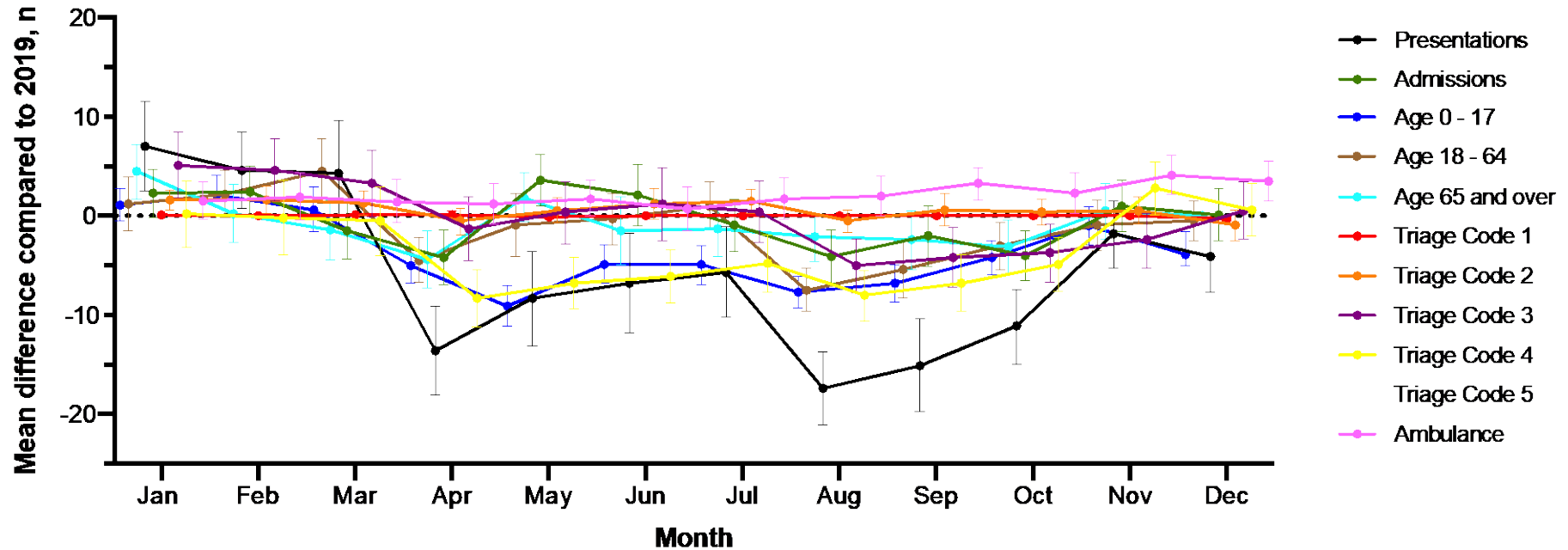
²Department of Clinical Informatics, Cabrini Health Malvern, Melbourne, Vic., Australia. Email: drankin@cabrini.com.au

³Alfred Hospital Emergency and Trauma Centre, Melbourne, Vic., Australia.

⁴School of Public Health and Preventative Medicine, Monash University, Melbourne, Vic., Australia.

⁵Present address: Monash Medical Centre, Melbourne, Vic., Australia.

⁶Corresponding author. Email nisal.punchihewa@gmail.com



Supplementary Figure S1: Daily mean difference of presentations by category in 2020 compared to 2019

Refer to Box 1 for details of Covid-19 restrictions presented in figure

Box 1 : Timeline of Covid-19 restrictions presented in Figures 1-3

1: Introduction of 1.5m social distancing measures | 2: Only four reasons to leave home: shopping for food or supplies, medical care and caregiving, exercise, essential work or study | 3: Restrictions eased with opening of restaurants and shops with indoor and gatherings of up to 20 people | 4: Re-introduction of restrictions with same four reasons to leave home as per 2 | 5: Addition of curfew between 8PM to 5AM | 6: No restrictions to leave home with travel limit of 25km radius and re-opening of restaurants and shops

Supplementary Table S1 : Clinical subgroups: Daily mean difference of presentations to ED in 2020 compared to 2019

	Jan	Feb	Mar	Apr	May	Jun
Cardiovascular	+0.4 (-0.7 to 1.5)	+0.5 (-1.1 to 2.3)	+1.0 (-0.2 to 2.3)	+0.2 (-1.1 to 1.5)	-0.1 (-1.4 to 1.1)	+0.1 (-1.1 to 1.4)
Respiratory	+1.7 (0.7 to 2.6)*	+0.8 (-0.3 to 2)	+4.2 (2.1 to 6.2)*	+1.0 (-0.1 to 2.2)*	+0.6 (0.6 to 0.4)	-0.4 (-1.7 to 0.9)
Abdominal/ gastrointestinal	+0.5 (-1.1 to 2.2)	+0.5 (-1 to 2)	-1.4 (-2.8 to 0)*	-2.6 (-3.9 to -1.2)*	-1.5 (-3.2 to 0.1)	+0.4 (-1.1 to 2)
Musculoskeletal	+0.9 (-1.4 to 3.2)	+1.1 (-1.1 to 3.5)	-0.3 (-2.4 to 1.7)	-4.1 (-6.3 to -1.9)*	-3.3 (-6.1 to -0.6)*	-2.9 (-5.2 to -0.6)*
Urological/ renal	+0.4 (-0.2 to 1.2)	-0.1 (-1 to 0.7)*	-0.8 (0.6 to 0.6)	-1.2 (-1.8 to -0.6)*	+0.1 (-0.4 to 0.8)	+0.1 (-0.7 to 0.9)
Neurology/ stroke	-0.2 (-1.2 to 0.7)	0 (-1.2 to 1.1)	-1.0 (-2.1 to 0)	-0.9 (-1.9 to 0.1)	+0.7 (-0.3 to 1.8)	+0.1 (-1 to 1.2)
Infectious Diseases	0 (-0.8 to 0.7)	+0.5 (-0.5 to 1.6)	+0.5 (-0.5 to 1.6)	-0.8 (-1.7 to 0.1)	-1.0 (-1.9 to 0)*	-0.3 (-1.4 to 0.8)
Psychiatry/ alcohol or drug related	+0.1 (0 to 0.3)	0 (-0.1 to 0.2)	+0.1 (0 to 0.3)	0 (-0.1 to 0.1)	0 (-0.3 to 0.2)	+0.1 (-0.1 to 0.3)
Haematology/ oncology	+0.3 (-0.3 to 0.9)	+0.3 (-0.3 to 0.9)	+0.5 (-0.1 to 1.3)	+0.4 (0 to 0.9)*	+0.6 (0 to 1.3)*	-0.2 (-0.9 to 0.4)
Endocrinology/ metabolic	0 (-0.3 to 0.3)	-0.2 (-0.5 to 0)	-0.1 (-0.5 to 0.1)	0 (-0.2 to 0.1)	-0.2 (-0.5 to 0.1)	+0.1 (-0.1 to 0.3)
ENT/ oral/ ophthalmology	0 (-0.4 to 0.4)	+0.4 (-0.1 to 1)	+0.9 (0.4 to 1.4)*	-0.3 (-0.7 to 0.1)	-0.5 (-1 to 0)*	+0.4 (0 to 0.9)
Obstetrics and gynaecology	+0.2 (-0.1 to 0.6)	0 (-0.3 to 0.4)	0 (-0.4 to 0.2)	-0.2 (-0.6 to 0.1)	-0.3 (-0.7 to 0.1)	-0.3 (-0.7 to 0.1)
Allergy/skin	0 (-0.3 to 0.4)	+0.2 (-0.1 to 0.7)	+0.1 (-0.3 to 0.6)	-0.2 (-0.5 to 0.1)	-0.1 (-0.5 to 0.2)	-0.3 (-0.7 to 0)
Uncodeable	+0.1 (-0.8 to 1.2)	-0.5 (1.8 to 0.6)	+1.5 (-0.2 to 3.3)	+1.0 (-0.4 to 2.4)	+2.1 (0.8 to 3.5)*	-0.7 (-1.7 to 0.2)

Daily mean difference of cases presented with 95% confidence intervals.. *P-value significant at p<0.05, p-values computed with student's t-test

Note: Mean difference is calculated relative to the reference baseline of 2019

	Jul	Aug	Sep	Oct	Nov	Dec
Cardiovascular	+1.0 (-0.4 to 2.6)	-0.6 (-2 to 0.7)	+0.5 (-1 to 2.1)	-0.6 (-2.1 to 0.8)	-1.1 (-2.5 to 0.2)	+1.1 (-0.2 to 2.5)
Respiratory	-0.1 (-1.2 to 0.9)	-1.0 (-2 to 0)	-2.0 (-3 to -0.9)*	-2.5 (-3.4 to -1.7)	-1.7 (-3 to -0.3)*	+0.5 (-1.2 to 0.9)
Abdominal/ gastrointestinal	+0.3 (-1.2 to 1.9)	-1.2 (-2.8 to 0.3)	-0.5 (-2.2 to 1.1)	0.1 (-1.5 to 1.7)	+1.7 (0.2 to 3.2)*	+1.5 (0 to 3.0)
Musculoskeletal	-1.0 (-3.3 to 1.2)	-7.0 (-9.2 to -4.8)*	-3.5 (-5.4 to -1.6)*	-1.4 (-3.5 to 0.6)	+1.2 (-0.8 to 3.2)	+1.2 (-0.9 to 3.3)
Urological/ renal	+0.1 (-0.5 to 0.8)	0 (-0.6 to 0.6)	-0.1 (-0.9 to 0.6)	-0.2 (-1.0 to 0.7)	+0.3 (-0.4 to 1.2)	-0.2 (-1.0 to 0.6)
Neurology/ stroke	-1.0 (-2.1 to 0.1)	0 (-1.1 to 1.1)	-0.1 (-1.3 to 1.1)	-0.5 (-1.7 to 0.8)	+0.7 (-0.3 to 1.8)	+0.2 (-1.0 to 1.4)
Infectious Diseases	-1.1 (-2.1 to 0)*	-0.9 (-1.9 to 0)	-1.7 (-2.9 to -0.4)*	-0.8 (-1.6 to 0)	+0.2 (-0.6 to 1)	-1.5 (-2.4 to -0.6)*
Psychiatry/ alcohol or drug related	0 (-0.2 to 0.3)	0 (0 to 0.1)	+0.1 (0 to 0.2)	0.1 (-0.2 to 0.3)	+0.1 (0 to 0.3)	0 (-0.3 to 0.2)
Haematology/ oncology	+0.3 (-0.2 to 0.9)	-0.3 (-0.7 to 0)	-0.3 (-0.8 to 0.1)	-0.9 (-1.5 to -0.2)	-0.4 (-1.1 to 0.2)	-0.6 (-1.2 to -0.1)*
Endocrinology/ metabolic	0 (-0.1 to 0.2)	-0.1 (-0.3 to 0)	+0.1 (-0.1 to 0.3)	+0.3 (0 to 0.7)	+0.1 (-0.1 to 0.4)	+0.2 (-0.1 to 0.5)
ENT/ oral/ ophthalmology	-0.3 (-0.7 to 0)	-0.1 (-0.6 to 0.3)	0 (-0.5 to 0.3)	-0.4 (-1.0 to 0.2)	0 (-0.5 to 0.4)	-0.7 (-1.3 to 0)*
Obstetrics and gynaecology	0 (-0.4 to 0.3)	-0.2 (-0.5 to 0)	-0.3 (-0.7 to 0)	-0.1 (-0.5 to 0.4)	0 (-0.3 to 0.3)	0 (-0.4 to 0.4)
Allergy/skin	-0.3 (-0.7 to 0.1)	-0.3 (-0.7 to 0)	-0.1 (-0.6 to 0.2)	-0.1 (-0.6 to 0.4)	-0.4 (-0.9 to 0)	+0.1 (-0.4 to 0.7)
Uncodeable	+0.2 (-1.1 to 1.6)	-0.2 (-1.3 to 0.8)	-0.7 (-1.8 to 0.4)	-0.3 (-1.3 to 0.8)	+0.6 (-0.5 to 1.8)	+1.2 (-0.1 to 2.6)

Daily mean difference of cases presented with 95% confidence intervals.. *P-value significant at $p < 0.05$, p-values computed with student's t-test
Note: Mean difference is calculated relative to the reference baseline of 2019