

Australian Health Review

CONTENTS Volume 44, Number 4, 2020

Policy Reflections

There can be no quality without equity

Derek Feeley 503

Positives to be found in COVID response

Bronwyn Evans 504

Equity – Special Focus

Assessing the support of health leadership for increased Indigenous participation in the health workforce

Christopher Bourke, Julie Lahn, Colleen Gibbs and Natasha Lennard 505

Risk factors for non-participation in a universal developmental surveillance program in a population in Australia

Chandra Ayer, Valsamma Eapen, Bronwyn Overs, Joseph Descallar, Bin Jalaludin, John Graeme Eastwood, Cheryl Dissanayake, Katrina Williams, Elisabeth Murphy and Susan Woolfenden, for the Watch Me Grow Study Group 512

Promoting hospital and primary care collaboration for timely and effective care for chronic hepatitis B in western Melbourne

Katherine Sievert, Rachel Liddle, Annie Tan, Niranjana Arachchi, Zina Valaydon and Nicole Allard 521

Responsibility for evidence-based policy in cardiovascular disease in rural communities: implications for persistent rural health inequalities

Laura Alston, Lisa Bourke, Melanie Nichols and Steven Allender 527

COVID-19 – Special Focus

Provision of a consistent national approach to radiation therapy workforce protection measures in Australia during the COVID-19 pandemic

Min Ku, Tanya Morgan, Alan Malbon, Timothy Bartram, Jillian Cavanagh and Beni Halvorsen 535

Are pharmacists willing to work in disasters?

Elizabeth M. McCourt, Kaitlyn E. Watson, Judith A. Singleton, Vivienne Tippet and Lisa M. Nissen 540

Quantitative fit testing with limited supplies of respirator masks in hospital personnel during the COVID-19 pandemic

Shanel Cameron, Winston Cheung, Nigel Cronin, Karina Griffiths, Rhiannon Hunt, Lesley Innes, Mark Kol, Amy Lawrence, Asim Shah, Katina Skylas and Atul Wagh, The Sydney Local Health District Mask Fit Investigators 542

Health Law and Ethics

Evidence-based law making on voluntary assisted dying

Ben P. White and Lindy Willmott 544

Improving Healthcare

It's time for the mandatory use of simulation and human factors in hospital design

Brooke Dench, Stephanie Barwick and Melanie Barlow 547

Predictors of ED attendance in older patients with chronic disease: a data linkage study

Ting Xia, Joanne Enticott, Christopher Pearce, Danielle Mazza and Lyle R. Turner 550

Scoping review of Australian evaluations of healthcare delivery models: are we making the most of the evidence?

Jacqueline Roseleur, Andrew Partington and Jonathan Karnon 557

Integrating a pharmacist into the perioperative setting

Tori G. Forrester, Sara Sullivan, Centaine L. Snoswell, Peter Pillans, Michael Barras and David Sturgess 563

Strengthening care for children: pilot of an integrated general practitioner–paediatrician model of primary care in Victoria, Australia

Harriet Hiscock, Rachel O'Loughlin, Rachel Pelly, Catherine Laird, Jessica Holman, Kim Dalziel, Shaoke Lei, Douglas Boyle and Gary Freed 569

Efficiency gains from a standardised approach to older people presenting to the emergency department after a fall

Glenn Arendts, Naomi Leyte, Sandra Dumas, Shabana Ahamed, Vethanjaly Khokulan, Ouday Wahbi, Andrea Lomman, David Hughes, Vanessa Clayden and Bhaskar Mandal 576

Does policy change to allow pharmacist provision of influenza vaccination increase population uptake? A systematic review

Jean Spinks, Emilie Bettington, Martin Downes, Lisa Nissen and Amanda Wheeler 582

Evaluation of HealthPathways: an appraisal of usage, experiences and opinions of healthcare professionals in Australia and New Zealand

Arran Goddard-Nash, Marshall Makate, Richard Varhol, Frances Quirk, Richard Larsen, Graham McGeoch, Brett Shand and Suzanne Robinson 590

Service use of young people with Type 1 diabetes after transition from paediatric to adult-based diabetes health care

Lin Perry, Janet Dunbabin, Xiaoyue Xu, Julia Lowe, Shamasunder Acharya, Steven James and Katharine S. Steinbeck 601

Health Workforce

Emotional exhaustion among regional doctors in training and the application of international guidelines on sustainable employability management for organisations

Madeleine Fitzpatrick, Kathryn Garsia, Kezia Eyre, Courtney-Anne Blackhall and Sabrina Pit 609

Development of a physiotherapy-led bronchoscopy service: a regional hospital perspective

Jane Lockstone, Ianthe Boden, Nadia Zalucki, James Darvas and Scott Parkes 618

Evolving experience of operating theatre staff with the implementation of robotic-assisted surgery in the public sector

Daniel Steffens, Kate E. McBride, Rachael Roberts, Paul G. Bannon and Michael J. Solomon 624

Health Services Research

Estimating the prevalence of life-limiting conditions in Queensland for children and young people aged 0–21 years using health administration data

Alison P. Bowers, Raymond J. Chan, Anthony Herbert and Patsy Yates 630

Characterising the number and type of presentations to a tertiary emergency department by young people affected by drugs and alcohol

Yusuf Nagree and Ben Darwent 637

Sociodemographic and health risk profile associated with participation in a private health insurance weight loss maintenance and chronic disease management program

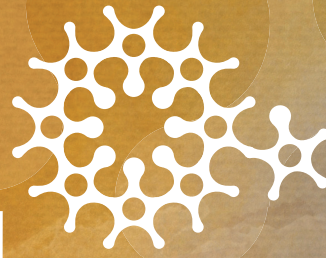
Bronwyn McGill, Blythe J. O'Hara, Anne C. Grunseit, Adrian Bauman, Luke Lawler and Philayrath Phongsavan 642

Cancer patients' use of and attitudes towards medicinal cannabis

Allison Drosdowsky, Sarah Blaschke, Trista Koproski, Sonia Fullerton, Arti Thackerar, Steve Ellen, Jo Phipps-Nelson and Corry de Neef 650

Corrigendum: Cancer patients' use of and attitudes towards medicinal cannabis

Allison Drosdowsky, Sarah Blaschke, Trista Koproski, Sonia Fullerton, Arti Thackerar, Steve Ellen, Jo Phipps-Nelson and Corry de Neef 656



ahha

australian healthcare &
hospitals association

the voice of public healthcare®

AHHA—the voice of public healthcare

The Australian Healthcare and Hospitals Association (AHHA) is the 'voice of public healthcare'—we have been Australia's peak body for public and not-for-profit hospitals and healthcare for over 70 years.

Our vision is a healthy Australia, supported by the best possible healthcare system. We want Australians to have equitable access to high quality affordable healthcare when and where they need it.

We build networks, we share ideas, we advocate, and we consult. Our advocacy and thought leadership is backed by high

quality research, events and courses, and our publications—a twice-weekly electronic newsletter, *Healthcare in Brief*, a bi-monthly member magazine *The Health Advocate* and our peer-reviewed journal *Australian Health Review*.

AHHA is committed to working with all stakeholders from across the health sector.

Talk to us about how we can support your organisation to be a more effective, innovative and sustainable part of the Australian health system.

www.ahha.asn.au



**“I want a
super fund
that’s an
expert at
managing
money.”**

Vindhya Mendis,
HESTA member

We’ve been awarded a 15 year platinum performance rating from Australia’s most respected super research company, SuperRatings.

That means we’re not only one of the largest super funds in the country, we’re also one of the best.



HESTA



Product ratings are only one factor to be considered when making a decision. See hesta.com.au/ratings for more information. Issued by H.E.S.T. Australia Ltd ABN 66 006 818 695 AFSL 235249, the Trustee of Health Employees Superannuation Trust Australia (HESTA) ABN 64 971 749 321. This information is of a general nature. It does not take into account your objectives, financial situation or specific needs so you should look at your own financial position and requirements before making a decision. You may wish to consult an adviser when doing this. Before making a decision about HESTA products you should read the relevant product disclosure statement (call 1800 813 327 or visit hesta.com.au/pds for a copy), and consider any relevant risks (hesta.com.au/understandingrisk).

Australian Healthcare and Hospitals Association

***Australian Health Review* is the journal of the Australian Healthcare and Hospitals Association (AHHA), Australia's national peak body for public health care providers.**

We are a national voice for public healthcare, advocating our vision for an effective, innovative and sustainable health system where all Australians have equitable access to healthcare of the highest standard when and where they need it. We inform, advocate and influence health debate and policy development by undertaking and promoting research, highlighting evidence-informed practice, and effectively communicating issues and ideas.

Our membership includes state health departments, Local Hospital Networks and public hospitals, community health services, Primary Health Networks and primary healthcare providers, aged care and allied health providers, health-related businesses, universities, individual health professionals and academics. As such, we are uniquely placed to be an independent, national voice for universal high quality healthcare to benefit the whole community.

Membership

Membership of AHHA is open to any organisation whose aims or activities are connected with:

- the provision of hospital or healthcare services
- the improvement of healthcare, or
- the supply of goods and services to hospitals or healthcare services

Universities or other educational organisations that offer courses of education and/or research in relevant healthcare related fields and individuals who are practitioners, employees within a relevant health field or students in a relevant field of health-related study are also welcome to join AHHA.

In addition to membership of the AHHA, organisations such as universities and institutes conducting health system research can become members of AHHA through the Deeble Institute for Health Policy Research. Deeble Institute membership confers similar benefits to AHHA membership along with the opportunity to influence and participate in the research activities of the Institute.

For further details on becoming a member of the AHHA including the fees and specific member benefits for each membership type, please visit our website at ahha.asn.au/membership.

Our contact details

Australian Healthcare and Hospitals Association
PO Box 78
Deakin West ACT 2061

P. 02 6162 0780

F. 02 6162 0779

E. admin@ahha.asn.au

W. ahha.asn.au

 [facebook.com/AusHealthcare](https://www.facebook.com/AusHealthcare)

 @AusHealthcare

 [linkedin.com/company/australian-healthcare-&-hospitals-association](https://www.linkedin.com/company/australian-healthcare-&-hospitals-association)

© Australian Healthcare and Hospitals Association 2020

AHHA's mission: to conduct research, educate and influence the healthcare system to achieve better health outcomes, improved patient and provider experience, greater equity and sustainability.

