



human energy®

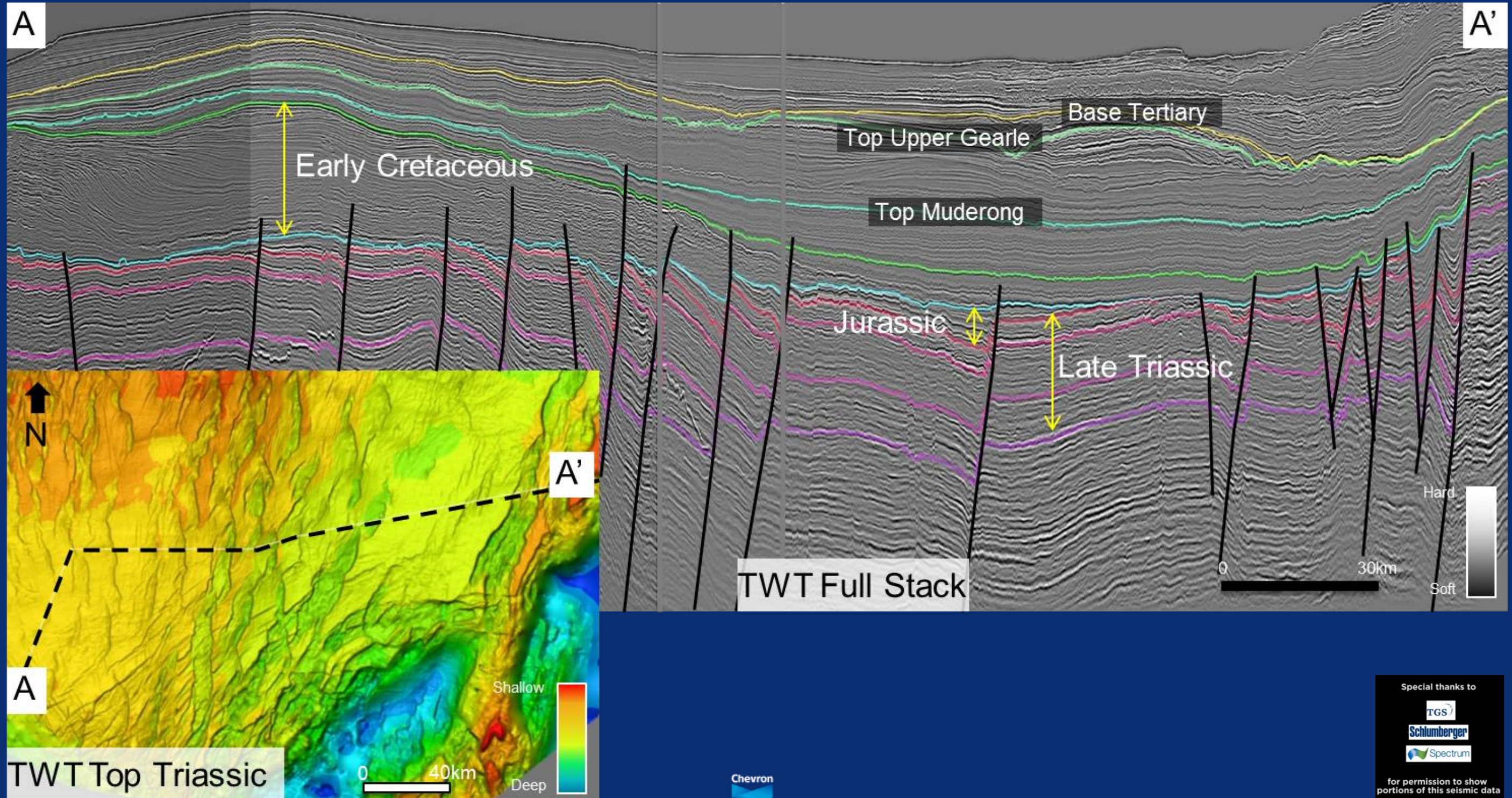
# Unravelling the Triassic Mungaroo Formation in the North Carnarvon Basin Using Regional Stratal Slice Volumes

\*Tony Marsh, Bill Kowalik (retired), Anne Powell, Rhonda Welch,  
Heidi Howe, Bill Hallager (retired)

APPEA Conference, May 15th, 2018



# Tectonostratigraphy

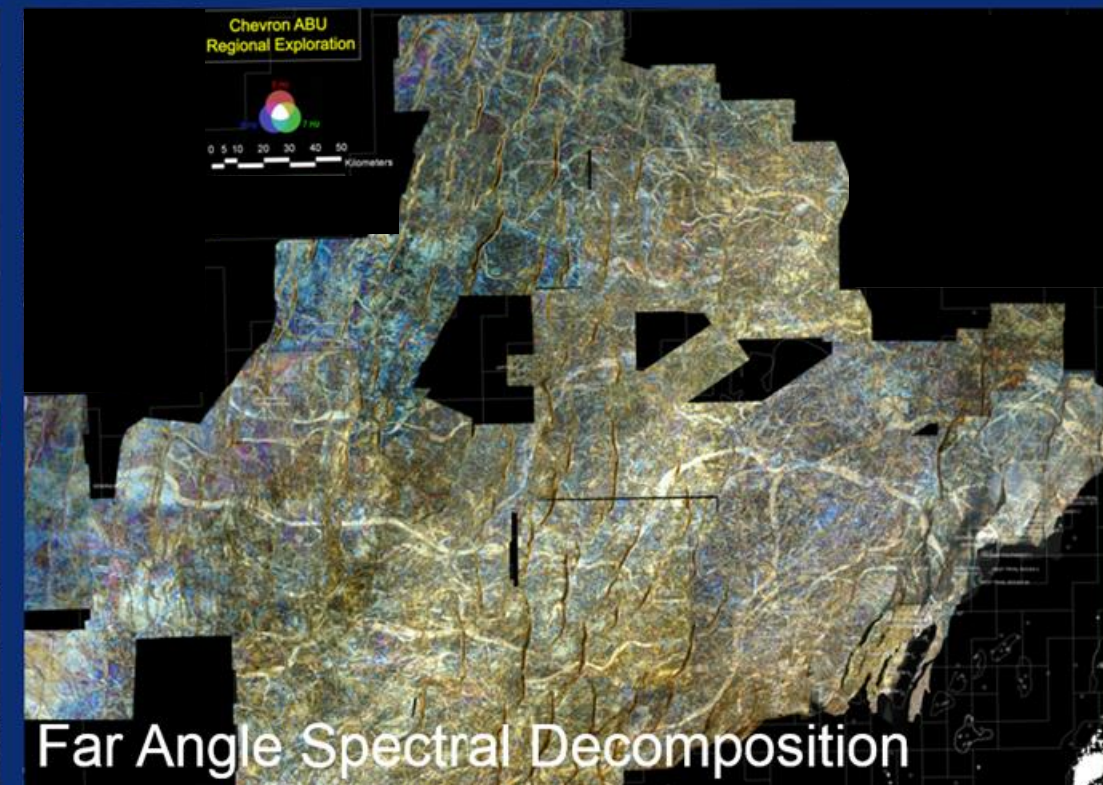
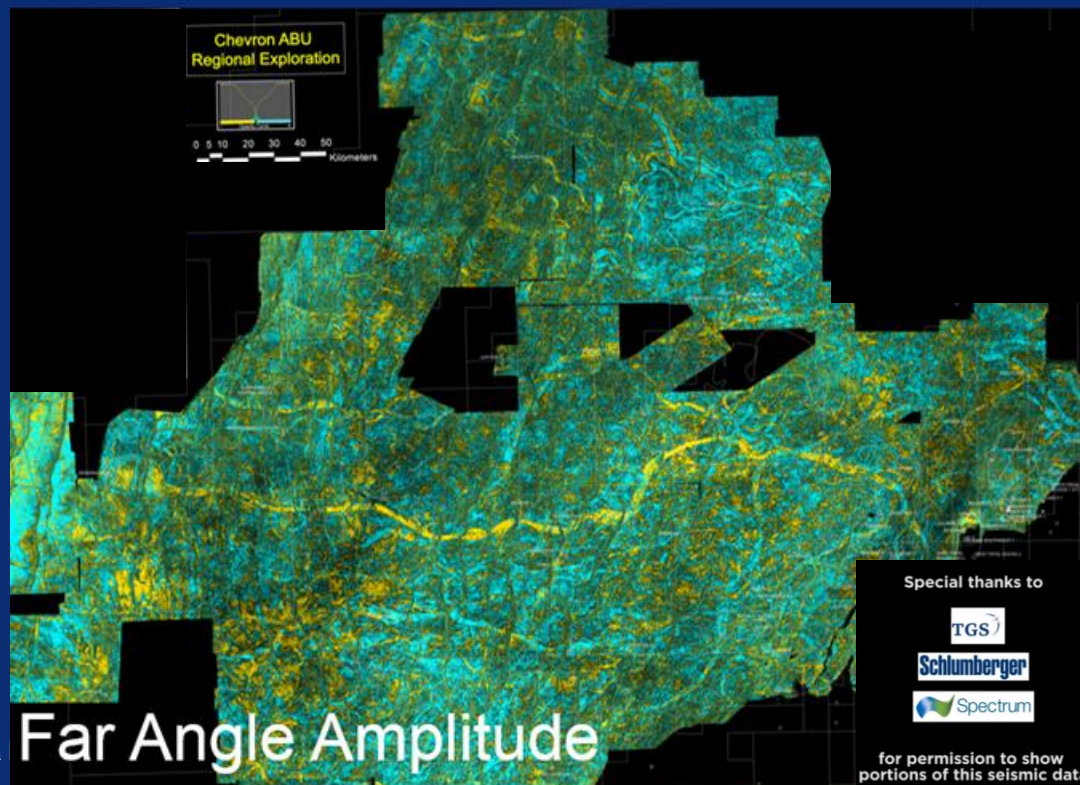
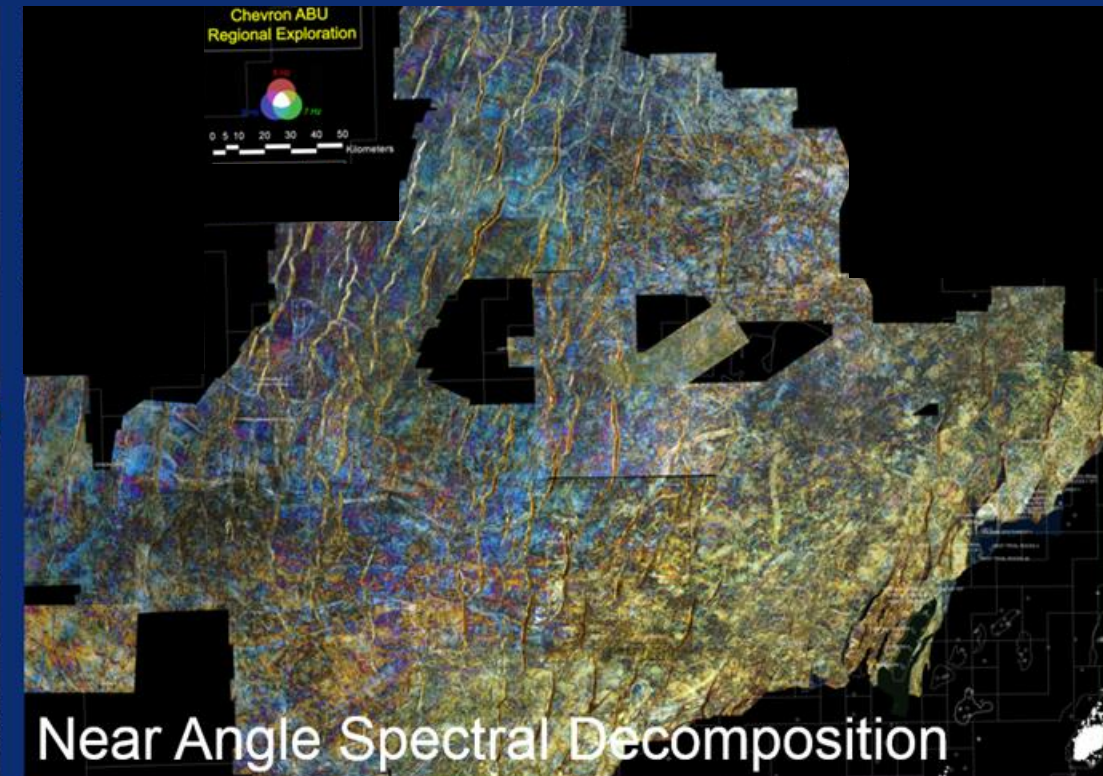
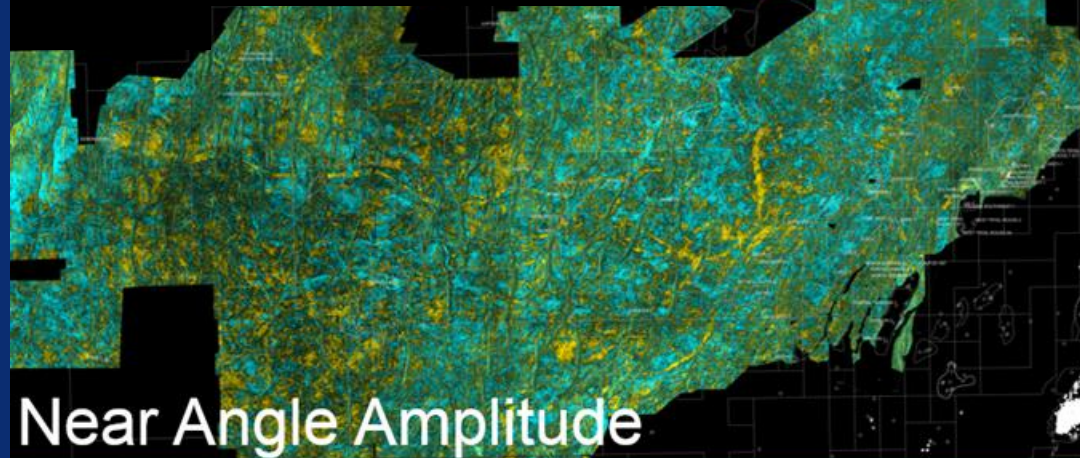




# Pre-Rift RSSV Example

## Attribute Selection Criteria

- AVO Class (Calibrated Data)
- Polarity & Polarity Reversals
- Rock & Fluid Discrimination
- Environment of Deposition

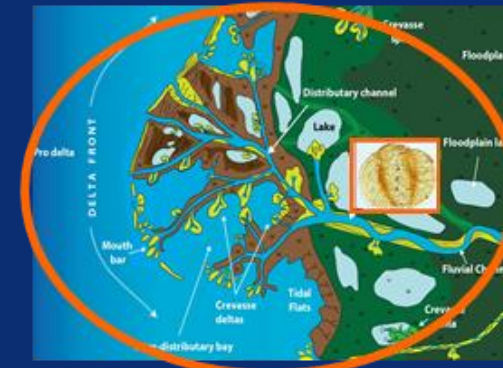
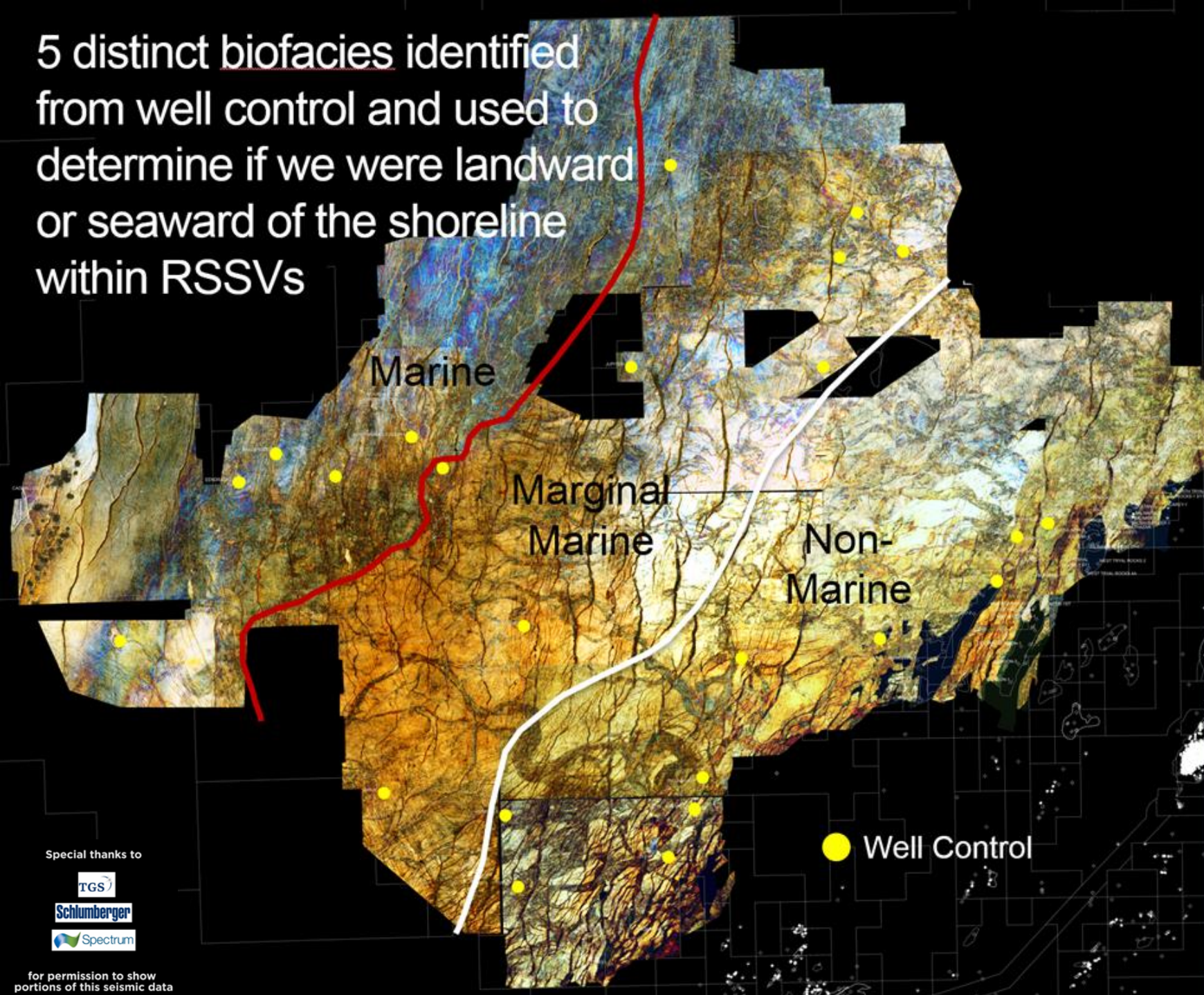




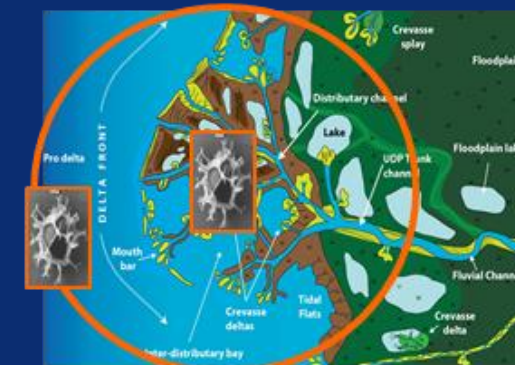
# Environments of Deposition

## Shoreline & Marginal Marine to Non-Marine Transition Mapping

5 distinct biofacies identified from well control and used to determine if we were landward or seaward of the shoreline within RSSVs



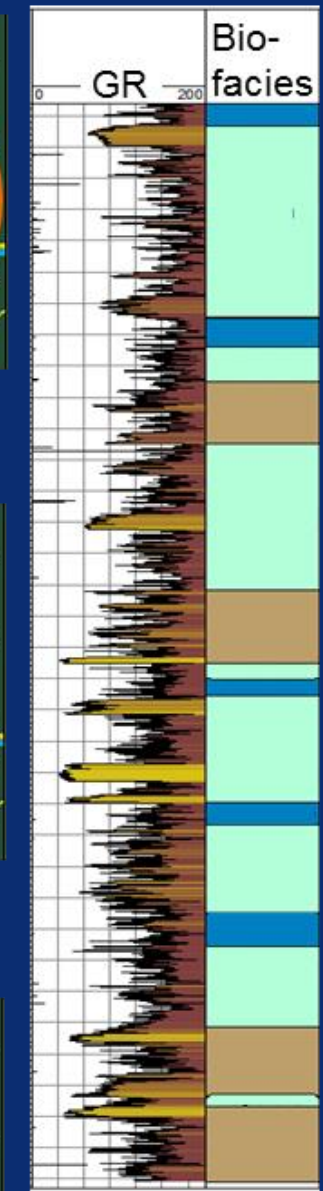
Spores & pollen  
Freshwater Algae



Dinocysts &  
Acritarchs



Nannofossils



### Biofacies

- Non-Marine (AP)
- Non-Marine (DP)
- Marginal Marine
- Shallow Marine
- Offshore Marine



# Summary & Conclusion

- **Chevron have used proprietary RSSV technology to map and de-risk the presence of seal, reservoir, trap, and source rock throughout the Mungaroo Formation, Jurassic, and Cretaceous of the North Carnarvon Basin.**
- **RSSV work has led to the identification of numerous exploration leads and prospects within the North Carnarvon Basin giving Chevron a leading commercial position in the basin.**
- **The RSSV's provide regional EOD context for our exploration, development and production teams, building reservoir models and refining well locations. For example stratigraphic details have been used to build statistical analogue databases used to improve our reservoir models.**
- **RSSVs are used to influence Chevron's acreage position and gas exploitation strategy in the North Carnarvon Basin through and industry-leading understanding of the geology of the North Carnarvon Basin.**

