

EXPLORATION GEOPHYSICS

www.publish.csiro.au/journals/eg

10.1071/EGv43n3toc

137–148 Correlation analysis and imaging technique of TEM data

Wen-Bo Guo, Guo-Qiang Xue, Xiu Li and Yin-Ai Liu

149–155 A physical model study of the travel times and reflection points of SH-waves reflected from transversely isotropic media with tilted symmetry axes

Li-Chung Sun, Young-Fo Chang, Chih-Hsiung Chang and Chia-Lung Chung

156–161 A modified EOM method for PS-wave migration

Yun Wang, Wei Wang and Junjie Yin

162–170 Error analysis of the converted wave deduced by equivalent velocity assumption

Wei Wang, Yun Wang, Junjie Yin and Xing Gao

171–177 Amplitude-preserved pre-stack time migration in 3D VTI media

Jiangjie Zhang and Jianfeng Zhang

178–189 Parametric inversion of residual magnetic anomalies due to simple geometric bodies

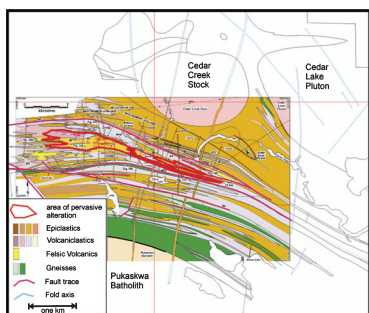
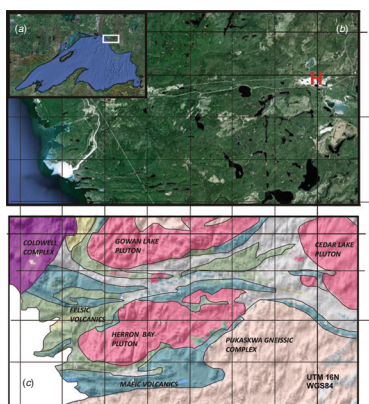
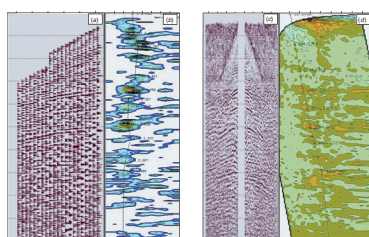
El-Sayed M. Abdelrahman, Eid R. Abo-Ezz and Khalid S. Essa

190–197 A simple adaptable data fusion methodology for geophysical exploration

George Leblanc, Madeline Lee and William Morris

198–212 Analysis of the risk of karst collapse in Lapão, Bahia, Brazil

Emerson S. M. dos Santos, Raymundo W. S. Silva and Edson E. S. Sampaio



Australian Society of Exploration Geophysicists



Society of Exploration Geophysicists of Japan



Korean Society of Earth and Exploration Geophysicists