

Supplementary Material

Heads Together Online Peer Education (HOPE): co-design of a family-led, video-based resource for families affected by paediatric acquired brain injury

Marnie Drake^{A,B,C}, *Taylor Jenkin*^{A,B}, *Kate Heine*^A, *Penelope Analytis*^{A,B}, *Michael Kendall*^A, *Adam Scheinberg*^{B,D,E} and *Sarah Knight*^{B,C,D,E,*}

^AHeads Together for ABI, Melbourne, Vic., Australia

^BClinical Sciences, Murdoch Children's Research Institute, Melbourne, Vic., Australia

^CMelbourne School of Psychological Sciences, The University of Melbourne, Vic., Australia

^DDepartment of Paediatrics, The University of Melbourne, Vic., Australia

^EVictorian Paediatric Rehabilitation Service, Royal Children's Hospital, Melbourne, Vic., Australia

*Correspondence to: Email: sarah.knight@unimelb.edu.au

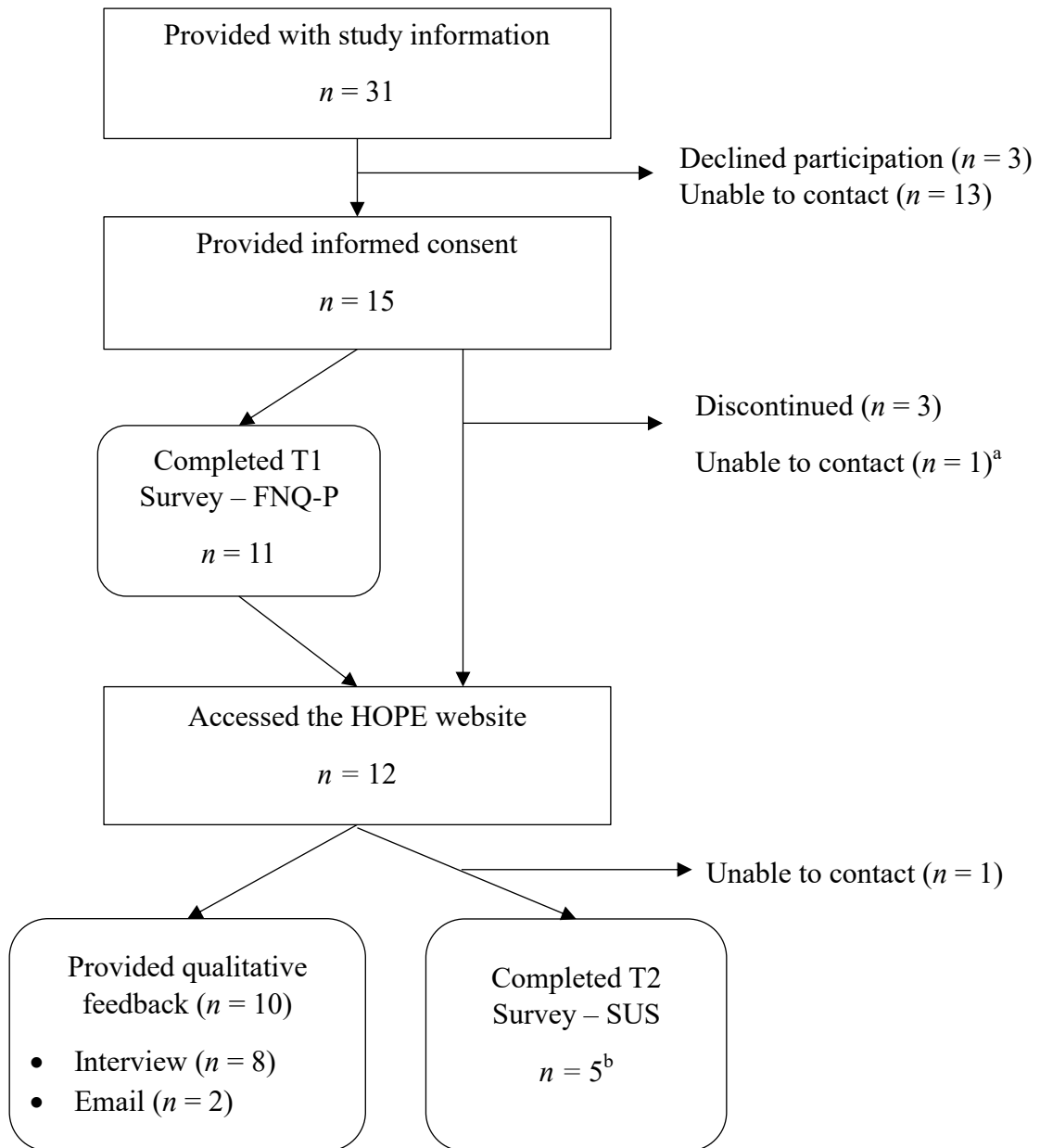
Supplementary Materials – Semi-structured interview questions

Topic	Example
Expectations	<p>I would like to start by asking you about before you accessed Project HOPE.^a</p> <p>What was going on for you at that time?^a</p> <p>What was going on for your family?^a</p> <p>What were you looking for? What were you hoping Project HOPE would offer?</p> <p>What were your expectations of peer support more generally?</p>
Evaluation of content and online delivery	<p>After accessing Project HOPE, what are your impressions?</p> <p>What did you think of the stories in the video/audio?</p> <p>What did you think of the website and online format?</p> <p>What did you like/dislike about Project HOPE?</p> <p>How often did you access Project HOPE? Was it easy to access Project HOPE? Were there barriers to accessing Project HOPE?</p> <p>What do you think of online peer support?</p> <p>Did you access Project HOPE with anybody else? If yes, who?^a</p>
Clinical implementation ^b	<p>After accessing Project HOPE, would you suggest the resource to parents of a child with an ABI? Why/Why not?^b</p> <p>Are there particular circumstances when you would not recommend the resource? (e.g., particular family situations and/or family dynamics)^b</p> <p>More broadly, what factors or circumstances would you consider in deciding whether to recommend online peer support to families?^b</p>
Evaluation of benefits	<p>Did you get something out of viewing Project HOPE? If so, what? If not, what was missing?</p> <p>Do you think parents/families would get something out of Project HOPE? If so, what? If not, what was missing?^b</p>
Future development	<p>How do you think Project HOPE could be improved?</p> <p>How do you think online peer support could be improved?</p> <p>What clinical considerations do you think should be factored into future development of online peer support resources?^b</p>

^aThese questions were asked to parent/caregiver participants only.

^bThese questions were asked to clinician participants only.

Supplementary Materials – Family/Caregiver Flow Diagram



Note. FNQ-P = Family Needs Questionnaire – Pediatric Version; SUS = System Usability Scale

^a One participant did not complete the FNQ-P and was unable to be contacted following their recruitment but went on to the HOPE website.

^b All participants were provided a link to complete the T2 survey prior to participating in an interview, but completion of the survey was limited.

Supplementary Materials – Clinician Flow Diagram

