

Supplementary material

**Convergent evolution of sexually dimorphic glands
in an amphi-Pacific harvestman family**

Guilherme Gainett^{A,D}, *Rodrigo H. Willemart*^B, *Gonzalo Giribet*^C, and *Prashant P. Sharma*^A

^ADepartment of Integrative Biology, University of Wisconsin–Madison, 352 Birge Hall,
430 Lincoln Drive, Madison, WI 53706, USA.

^BLaboratório de Ecologia Sensorial e Comportamento de Artrópodes, Escola de Artes,
Ciências e Humanidades, Universidade de São Paulo, Rua Arlindo Bétio, 1000,
Ermelino Matarazzo, São Paulo, SP 03828-000, Brazil.

^CMuseum of Comparative Zoology and Department of Organismic and Evolutionary Biology,
Harvard University, 26 Oxford Street, Cambridge, MA 02138, USA.

^DCorresponding author. Email: guilherme.gainett@wisc.edu

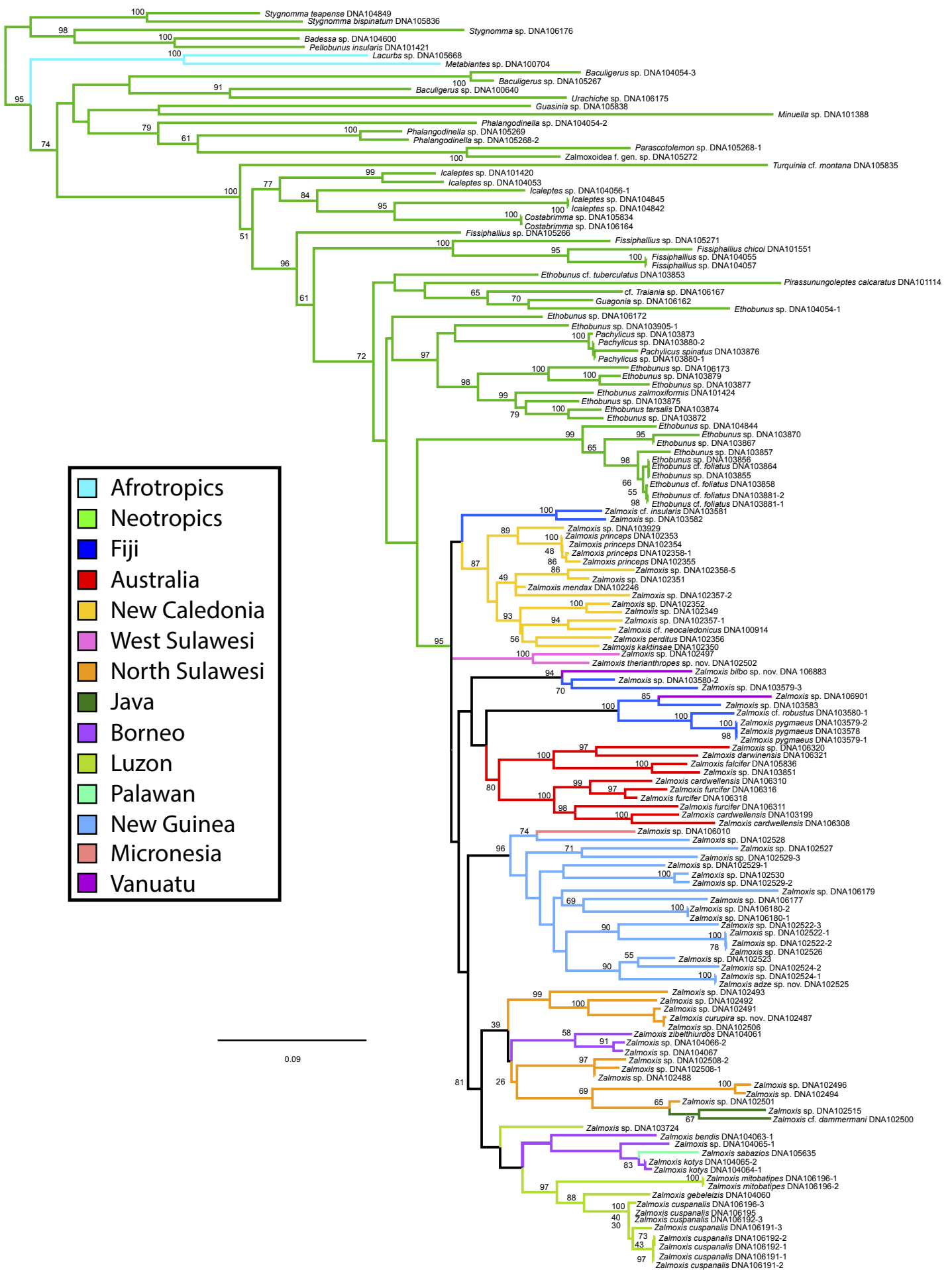


Fig. S1. Maximum-likelihood tree of all terminals from Sharma and Giribet (2012) supplemented with *Zalmoxis bilbo*, sp. nov. and *Zalmoxis* sp. MCZ IZ-131205 (Vanuatu). Colour on the branches represent localities following the code in the figure. Numbers on the nodes are bootstrap values.

Table S1. Table of terminals used in the analysis of gland evolution, with accession numbers and coding

Species	ID on tree	MCZ DNA number	MCZ Inv. Zool. number	Latitude	Longitude	Locality	Specific locality	Tarsus condition	GenBank number
<i>Zalmoxis</i> sp.	SL2494	DNA102494	131118	0.455	123.9491667	North Sulawesi	Gunung Bonde, near Matayangan, Bogani Nani Wartabone N.P., north Sulawesi	sexually monomorphic	DNA Reference Code = DNA102494; NCBI GenBank number = HE654071; NCBI GenBank number = JQ435173; NCBI GenBank number = JQ435270; NCBI GenBank number = JQ435340; NCBI GenBank number = JQ435471
<i>Zalmoxis</i> sp.	SL2496	DNA102496	131119	1.345571978	124.871063	North Sulawesi	Gunung Mahawu, Rurukan, Tomohon	sexually monomorphic	DNA Reference Code = DNA102496; NCBI GenBank number = HE654054; NCBI GenBank number = JQ435124; NCBI GenBank number = JQ435271; NCBI GenBank number = JQ435472
<i>Zalmoxis therianthropes</i> sp. nov.	SL2502	DNA102502	131124	-5.042222222	119.7352778	West Sulawesi	Bantimurung-Bulusaraung N.P., Sulawesi Selatan	sexually monomorphic	DNA Reference Code = DNA102502; NCBI GenBank number = HE654056; NCBI GenBank number = JQ435106; NCBI GenBank number = JQ435286; NCBI GenBank number = JQ435347; NCBI GenBank number = JQ435419; NCBI GenBank number = JQ435442
<i>Zalmoxis curupira</i> sp. nov.	SL2487	DNA102487	131112	0.575277778	123.895	North Sulawesi	Bukit Linggua, near Doloduo, north Sulawesi	sexually monomorphic	DNA Reference Code = DNA102487; NCBI GenBank number = HE605029; NCBI GenBank number = JN885723; NCBI GenBank number = JN885743; NCBI GenBank number = JN885774; NCBI GenBank number = JN885779; NCBI GenBank number = JN885791
<i>Zalmoxis</i> sp.	BR40662	DNA104066-2	131177	-2.644444444	115.4127778	Borneo	South Kalimantan Prov., Pagat, ~6 km E of Barabai, Gunung Batu Benawa	sexually monomorphic	DNA Reference Code = DNA104066_2; NCBI GenBank number = HE654065
<i>Zalmoxis</i> sp.	SL2488	DNA102488	131113	0.759166667	124.4213889	North Sulawesi	Gunung Ambang, near Modinding, NE of Kotamobagu, north Sulawesi	sexually monomorphic	DNA Reference Code = DNA102488; NCBI GenBank number = HE654023; NCBI GenBank number = JQ435123; NCBI GenBank number = JQ435278; NCBI GenBank number = JQ435435
<i>Zalmoxis</i> sp.	SL2493	DNA102493	131117	0.759166667	124.4213889	North Sulawesi	Gunung Ambang, near Modinding, NE of Kotamobagu, north Sulawesi	sexually monomorphic	DNA Reference Code = DNA102493; NCBI GenBank number = JQ435099; NCBI GenBank number = JQ435280; NCBI GenBank number = JQ435334
<i>Zalmoxis</i> cf. <i>dammermani</i>	JV2500	DNA102500	131122	-6.746111111	106.9966667	Java	Gunung Gede-Pangrango N.P., Jawa Barat	sexually monomorphic	DNA Reference Code = DNA102500; NCBI GenBank number = HE605028; NCBI GenBank number = JN885738; NCBI GenBank number = JN885742; NCBI GenBank number = JN885773; NCBI GenBank number = JN885790
<i>Zalmoxis</i> sp.	SL25081	DNA102508-1	131127	0.758611111	124.4202778	North Sulawesi	Gunung Ambang, near Modinding, NE of Kotamobagu, north Sulawesi	sexually monomorphic	DNA Reference Code = DNA102508; NCBI GenBank number = HE654058; NCBI GenBank number = HE654059
<i>Zalmoxis kotys</i> Sharma <i>et al.</i> , 2012	BR40641	DNA104064-1	131175	2.134444444	117.4108333	Borneo	East Kalimantan Prov., Berau District, Hutan Wisata Sei Tangap,	sexually monomorphic	DNA Reference Code = DNA104064; NCBI GenBank number = HE654062

Species	ID on tree	MCZ DNA number	MCZ Inv. Zool. number	Latitude	Longitude	Locality	Specific locality	Tarsus condition	GenBank number
<i>Zalmoxis bendis</i> Sharma <i>et al.</i> , 2012	BR40631	DNA104063-1	131174	1.995	117.6008333	Borneo	~8 km W of Tanjungredeb East Kalimantan Prov., Berau District, near Kampung Suaran, ca. 40 km N of Tanjungredeb	sexually dimorphic	DNA Reference Code = DNA104063; NCBI GenBank number = HE654061
<i>Zalmoxis zibelthiurdos</i> Sharma <i>et al.</i> , 2012	BR4061	DNA104061	131172	-1.143333333	116.8497222	Borneo	East Kalimantan Prov., Sungai Wain Protection Forest, ca. 15 km N of Balikpapan	sexually monomorphic	DNA Reference Code = DNA104061; NCBI GenBank number = HE654060; NCBI GenBank number = JQ435102; NCBI GenBank number = JQ435267; NCBI GenBank number = JQ435400
<i>Zalmoxis gebelezis</i> Sharma <i>et al.</i> , 2012	PN4060	DNA104060	131171	11.81972222	121.9666667	Luzon	Panay: PESCP research station, Sibaliw	sexually monomorphic	DNA Reference Code = DNA104060; NCBI GenBank number = HE654091; NCBI GenBank number = JQ435187; NCBI GenBank number = JQ435272; NCBI GenBank number = JQ435393; NCBI GenBank number = JQ435424
<i>Zalmoxis mitobatipes</i> Roewer, 1926	LZ61961	DNA106196-1	131216	14.17475	121.0168056	Luzon	Luzon: Cabangaan Silang Cavite	sexually monomorphic	DNA Reference Code = DNA106196; NCBI GenBank number = HE605018; NCBI GenBank number = HE654115; NCBI GenBank number = HE654116; NCBI GenBank number = JN885721; NCBI GenBank number = JN885741; NCBI GenBank number = JN885764; field number = Locality 798
<i>Zalmoxis mitobatipes</i> Roewer, 1926	LZ61962	DNA106196-2	131216	14.17475	121.0168056	Luzon	Luzon: Cabangaan Silang Cavite	sexually monomorphic	DNA Reference Code = DNA106196; NCBI GenBank number = HE605018; NCBI GenBank number = HE654115; NCBI GenBank number = HE654116; NCBI GenBank number = JN885721; NCBI GenBank number = JN885741; NCBI GenBank number = JN885764; field number = Locality 798
<i>Zalmoxis cuspanalis</i> Roewer, 1927	LZ61963	DNA106196-3	131216	14.17475	121.0168056	Luzon	Luzon: Cabangaan Silang Cavite	sexually monomorphic	DNA Reference Code = DNA106196; NCBI GenBank number = HE605018; NCBI GenBank number = HE654115; NCBI GenBank number = HE654116; NCBI GenBank number = JN885721; NCBI GenBank number = JN885741; NCBI GenBank number = JN885764; field number = Locality 798
<i>Zalmoxis cuspanalis</i> Roewer, 1927	LZ61911	DNA106191-1	131211	14.13041667	121.21	Luzon	Luzon: Mount Makiling	sexually monomorphic	DNA Reference Code = DNA106191; NCBI GenBank number = HE654109; NCBI GenBank number = HE654110; NCBI GenBank number = HE654111; field number = Locality 790
<i>Zalmoxis cuspanalis</i> Roewer, 1927	LZ61912	DNA106191-2	131211	14.13041667	121.21	Luzon	Luzon: Mount Makiling	sexually monomorphic	DNA Reference Code = DNA106191; NCBI GenBank number = HE654109; NCBI GenBank number = HE654110; NCBI GenBank number = HE654111; field number = Locality 790

Species	ID on tree	MCZ DNA number	MCZ Inv. Zool. number	Latitude	Longitude	Locality	Specific locality	Tarsus condition	GenBank number
<i>Zalmoxis cuspanalis</i> Roewer, 1927	LZ61913	DNA106191-3	131211	14.13041667	121.21	Luzon	Luzon: Mount Makiling	sexually monomorphic	DNA Reference Code = DNA106191; NCBI GenBank number = HE654109; NCBI GenBank number = HE654110; NCBI GenBank number = HE654111; field number = Locality 790
<i>Zalmoxis cuspanalis</i> Roewer, 1927	LZ6195	DNA106195	131215	14.13513889	121.2255833	Luzon	Luzon: Mount Makiling	sexually monomorphic	DNA Reference Code = DNA106195; NCBI GenBank number = HE654114; NCBI GenBank number = JQ435205; NCBI GenBank number = JQ435277; field number = Locality 797
<i>Zalmoxis cuspanalis</i> Roewer, 1927	LZ61923	DNA106192-3	131212	14.13675	121.20475	Luzon	Luzon: Mount Makiling	sexually monomorphic	DNA Reference Code = DNA106192; NCBI GenBank number = HE605019; NCBI GenBank number = HE654112; NCBI GenBank number = HE654113; NCBI GenBank number = JN885722; NCBI GenBank number = JN885740; NCBI GenBank number = JN885765; NCBI GenBank number = JN885778; field number = Locality 792
<i>Zalmoxis</i> sp.	LZ3724	DNA103724	131163	13.65	123.3430556	Luzon	Luzon: Camarines Sur Province, 15 km E Naga City, Mt. Isarog	sexually monomorphic	DNA Reference Code = DNA103724; NCBI GenBank number = HE654080; NCBI GenBank number = JQ435175; NCBI GenBank number = JQ435276; NCBI GenBank number = JQ435379
<i>Zalmoxis sabazios</i> Sharma <i>et al.</i> , 2012	PW5635	DNA105635	131180	10.15166667	118.8861111	Palawan	Palawan: Puerto Princesa Region, Sabang Underground N.P., Daylight Hole & Lions Cave	sexually monomorphic	DNA Reference Code = DNA105635; NCBI GenBank number = HE654097; NCBI GenBank number = JQ435184; NCBI GenBank number = JQ435304
<i>Zalmoxis perditus</i> Sharma, 2012	NC2356	DNA102356	131105	-22.58916667	167.52225	New Caledonia	Isle of Pines, Baie d'Upi	sexually monomorphic	DNA Reference Code = DNA102356; NCBI GenBank number = JN885727; NCBI GenBank number = JN885748; NCBI GenBank number = JN885762; NCBI GenBank number = JN885784
<i>Zalmoxis</i> sp.	NC2351	DNA102351	131100	-22.24713889	166.8279167	New Caledonia	Pic du Pin	sexually monomorphic	DNA Reference Code = DNA102351; NCBI GenBank number = HE654018; NCBI GenBank number = JQ435115; NCBI GenBank number = JQ435251; NCBI GenBank number = JQ435430
<i>Zalmoxis princeps</i> Sharma, 2012	NC23581	DNA102358-1	124546	-22.34202778	166.95925	New Caledonia	Port Boise Bay	sexually monomorphic	DNA Reference Code = DNA102358; NCBI GenBank number = HE605017; NCBI GenBank number = HE654081; NCBI GenBank number = JN885726; NCBI GenBank number = JN885746; NCBI GenBank number = JN885763; NCBI GenBank number = JN885777; NCBI GenBank number = JN885785
<i>Zalmoxis princeps</i> Sharma, 2012	NC2353	DNA102353	131102	-22.27961111	166.8279167	New Caledonia	Pic du Grand Kaori	sexually monomorphic	DNA Reference Code = DNA102353; NCBI GenBank number = HE654020; NCBI GenBank number = JQ435117; NCBI GenBank number = JQ435254; NCBI GenBank number = JQ435351; NCBI GenBank number = JQ435432

Species	ID on tree	MCZ DNA number	MCZ Inv. Zool. number	Latitude	Longitude	Locality	Specific locality	Tarsus condition	GenBank number
<i>Zalmoxis</i> sp.	NC2352	DNA102352	131101	-22.17697222	166.5106389	New Caledonia	Mt. Koghis	sexually monomorphic	DNA Reference Code = DNA102352; NCBI GenBank number = HE654019; NCBI GenBank number = JQ435116; NCBI GenBank number = JQ435247; NCBI GenBank number = JQ435354; NCBI GenBank number = JQ435431
<i>Zalmoxis kaktinsae</i> Sharma, 2012	NC2350	DNA102350	131099	-22.06011111	166.3489444	New Caledonia	Mt. Mou	sexually monomorphic	DNA Reference Code = DNA102350; NCBI GenBank number = HE605015; NCBI GenBank number = JN885728; NCBI GenBank number = JN885749; NCBI GenBank number = JN885761; NCBI GenBank number = JN885783
<i>Zalmoxis</i> sp.	NC23585	DNA102358-5	154597	-22.342028	166.95925	New Caledonia		sexually dimorphic	DNA Reference Code = DNA102358-5; NCBI GenBank number = JQ435252.1; NCBI GenBank number = JQ435164.1; NCBI GenBank number = JQ435461.1; NCBI GenBank number = JQ435411.1; NCBI GenBank number = JQ435366.1; NCBI GenBank number = HE654081.1
<i>Zalmoxis</i> sp.	NC23571	DNA102357-1	131106	-21.75402778	166.0001111	New Caledonia	Mt. Do	sexually monomorphic	DNA Reference Code = DNA102357; NCBI GenBank number = HE654022; NCBI GenBank number = HE654051
<i>Zalmoxis mendax</i> Sharma, 2012	NC2246	DNA102246	124552	-20.55	164.7833333	New Caledonia	Mt. Panie track	sexually monomorphic	DNA Reference Code = DNA102246; NCBI GenBank number = HE605014.1; NCBI GenBank number = JN885739; NCBI GenBank number = JN885747; NCBI GenBank number = JN885782
<i>Zalmoxis</i> sp.	NG2527	DNA102527	131140	-5.138694444	145.7745	New Guinea	Madang, Bitabag Reserve, Madang Province	sexually dimorphic	DNA Reference Code = DNA102527; NCBI GenBank number = HE654026; NCBI GenBank number = JQ435119; NCBI GenBank number = JQ435311; NCBI GenBank number = JQ435327; NCBI GenBank number = JQ435414
<i>Zalmoxis</i> sp.	NG6180m	DNA106180-1	131186	-6.1621	146.841933	New Guinea	Finisterre Mts., Yawan, primary forest plot	sexually monomorphic	DNA Reference Code = DNA106180; NCBI GenBank number = HE654107; NCBI GenBank number = HE654108
<i>Zalmoxis</i> sp.	NG2526	DNA102526	131139	-6.014777778	145.4124722	New Guinea	Goroka, Gahavisuka Park, East Highlands Province, Loc. #457	sexually monomorphic	DNA Reference Code = DNA102526; NCBI GenBank number = HE654085; NCBI GenBank number = JQ435169; NCBI GenBank number = JQ435216; NCBI GenBank number = JQ435367; NCBI GenBank number = JQ435463
<i>Zalmoxis</i> sp.	NG25221	DNA102522-1	131135	-6.014777778	145.4124722	New Guinea	Goroka, Gahavisuka Park, East Highlands Province, Loc. #457 to 458	sexually monomorphic	DNA Reference Code = DNA102522; NCBI GenBank number = HE654025; NCBI GenBank number = HE654052; NCBI GenBank number = HE654083
<i>Zalmoxis</i> sp.	NG25222	DNA102522-2	131135	-6.014777778	145.4124722	New Guinea	Goroka, Gahavisuka Park, East Highlands Province, Loc. #457 to 458	sexually monomorphic	DNA Reference Code = DNA102522; NCBI GenBank number = HE654025; NCBI GenBank number = HE654052; NCBI GenBank number = HE654083
<i>Zalmoxis</i> sp.	NG25223	DNA102522-3	131135	-6.014777778	145.4124722	New Guinea	Goroka, Gahavisuka Park, East Highlands	sexually monomorphic	DNA Reference Code = DNA102522; NCBI GenBank number = HE654025; NCBI GenBank number = HE654052;

Species	ID on tree	MCZ DNA number	MCZ Inv. Zool. number	Latitude	Longitude	Locality	Specific locality	Tarsus condition	GenBank number
<i>Zalmoxis</i> sp.	NG2528	DNA102528	131141	-5.138694444	145.7745	New Guinea	Province, Loc. #457 to 458 Madang, Bitabag Reserve, Madang Province	sexually monomorphic	NCBI GenBank number = HE654083 DNA Reference Code = DNA102528; NCBI GenBank number = FJ977798; NCBI GenBank number = HE605030; NCBI GenBank number = JN885724; NCBI GenBank number = JN885744; NCBI GenBank number = JN885775; NCBI GenBank number = JN885780; NCBI GenBank number = JN885792
<i>Zalmoxis</i> sp.	NG2529	DNA102529-1	131142	-5.138694444	145.7745	New Guinea	Madang, Bitabag Reserve, Madang Province	sexually monomorphic	DNA Reference Code = DNA102529; NCBI GenBank number = HE654070; NCBI GenBank number = HE654086; NCBI GenBank number = HE654087; NCBI GenBank number = JQ435126; NCBI GenBank number = JQ435243
<i>Zalmoxis</i> sp.	NG25292	DNA102529-2	131142	-5.138694444	145.7745	New Guinea	Madang, Bitabag Reserve, Madang Province	sexually monomorphic	DNA Reference Code = DNA102529; NCBI GenBank number = HE654070; NCBI GenBank number = HE654086; NCBI GenBank number = HE654087; NCBI GenBank number = JQ435126; NCBI GenBank number = JQ435243
<i>Zalmoxis</i> sp.	NG25293	DNA102529-3	131142	-5.138694444	145.7745	New Guinea	Madang, Bitabag Reserve, Madang Province	sexually monomorphic	DNA Reference Code = DNA102529; NCBI GenBank number = HE654070; NCBI GenBank number = HE654086; NCBI GenBank number = HE654087; NCBI GenBank number = JQ435126; NCBI GenBank number = JQ435243
<i>Zalmoxis</i> sp.	NG6177	DNA106177	131183	-6.1621	146.8419333	New Guinea	Finisterre Mts., Yawan, primary forest plot	sexually monomorphic	DNA Reference Code = DNA106177; NCBI GenBank number = HE654105; NCBI GenBank number = JQ435177; NCBI GenBank number = JQ435310; NCBI GenBank number = JQ435386; NCBI GenBank number = JQ435477
<i>Zalmoxis</i> sp.	NG2530	DNA102530	131143	-5.138694444	145.7745	New Guinea	Madang, Bitabag Reserve, Madang Province	sexually monomorphic	DNA Reference Code = DNA102530; NCBI GenBank number = HE654028; NCBI GenBank number = JQ435109; NCBI GenBank number = JQ435245; NCBI GenBank number = JQ435345; NCBI GenBank number = JQ435464
<i>Zalmoxis adze</i> sp. nov.	NG2525	DNA102525	131138	-9.444027778	147.3408333	New Guinea	Virarata National Park, Central Province, Loc. #461	sexually monomorphic	DNA Reference Code = DNA102525; NCBI GenBank number = HE654069; NCBI GenBank number = JQ435168; NCBI GenBank number = JQ435236; NCBI GenBank number = JQ435329; NCBI GenBank number = JQ435413; NCBI GenBank number = JQ435483
<i>Zalmoxis</i> sp.	FJ3582	DNA103582	131159	-17.66508333	178.7583611	Fiji	Forest above Viro, near river	sexually monomorphic	DNA Reference Code = DNA103582; NCBI GenBank number = HE654030; NCBI GenBank number = JQ435111; NCBI GenBank number = JQ435234; NCBI GenBank number = JQ435348; NCBI GenBank number = JQ435440

Species	ID on tree	MCZ DNA number	MCZ Inv. Zool. number	Latitude	Longitude	Locality	Specific locality	Tarsus condition	GenBank number
<i>Zalmoxis pygmaeus</i> Sørensen, 1886	FJ3579	DNA103579-1	131156	-18.07083333	178.4444167	Fiji	Savura Park, along ridge trail	sexually monomorphic	DNA Reference Code = DNA103579; NCBI GenBank number = HE605021; NCBI GenBank number = HE654090; NCBI GenBank number = JN885732; NCBI GenBank number = JN885753; NCBI GenBank number = JN885767; NCBI GenBank number = JN885787
<i>Zalmoxis</i> sp.	FJ3583	DNA103583	131160	-17.67108333	178.7610556	Fiji	Forest above Viro, in drier forest	sexually monomorphic	DNA Reference Code = DNA103583; NCBI GenBank number = HE654040; NCBI GenBank number = JQ435122; NCBI GenBank number = JQ435239; NCBI GenBank number = JQ435316; NCBI GenBank number = JQ435446
<i>Zalmoxis</i> sp.	WA3851	DNA103851	131165	-14.44666667	125.9944444	Western Australia	Bonaparte Archipelago, Sleep Head Island, site STMH01	sexually monomorphic	DNA Reference Code = DNA103851; NCBI GenBank number = HE654073; NCBI GenBank number = JQ435174; NCBI GenBank number = JQ435228; NCBI GenBank number = JQ435371; NCBI GenBank number = JQ435421; NCBI GenBank number = JQ435482
<i>Zalmoxis cardwellensis</i> Forster, 1955	QL6308	DNA106308	131207	-19.01088889	146.2055278	Queensland	Paluma Range N.P., H track	sexually monomorphic	DNA Reference Code = DNA106308; NCBI GenBank number = JN885734; NCBI GenBank number = JN885755; NCBI GenBank number = JN885769; field number = Locality 855
<i>Zalmoxis fuscifer</i> Sharma, 2012	QL6311	DNA106311	131187	-16.06136111	145.4617222	Queensland	Daintree N.P., Cape Tribulation Road, Emmagen Creek, adjacent to '4WD track'	sexually monomorphic	DNA Reference Code = DNA106311; NCBI GenBank number = HE605025; NCBI GenBank number = JN885735; NCBI GenBank number = JN885756; field number = Locality 859
<i>Zalmoxis darwinensis</i> Goodnight & Goodnight, 1948	WA6321	DNA106321	131196	-12.45766667	131.0510833	Western Australia	Howard Springs Reserve, grassy area before forest, adjacent to springs	sexually monomorphic	DNA Reference Code = DNA106321; NCBI GenBank number = HE605022; NCBI GenBank number = JN885730; NCBI GenBank number = JN885751; NCBI GenBank number = JN885768; field number = Locality 876
<i>Zalmoxis falcifer</i> Sharma, 2012	WA5836	DNA105836	131181	-14.51666667	124.9166667	Western Australia	Western Australia, Bonaparte Archipelago	sexually monomorphic	DNA Reference Code = DNA105836; NCBI GenBank number = HE605024; NCBI GenBank number = JN885729; NCBI GenBank number = JN885750; NCBI GenBank number = JN885771; NCBI GenBank number = JN885789
<i>Zamoxis bilbo</i> sp. nov.	VN6883	DNA 106883	131200	-15.36824	166.97804	Vanuatu	Tanakar, near Butmas, Mt. Espiritu Santo, Vanuatu	sexually dimorphic	MT583734; MT559431; MT559432; MT559338; MT568926
<i>Ethobunus</i> cf. <i>foliatus</i>	MX38811	DNA103881-1	81158	17.514278	-92.294861	Neotropics		sexually monomorphic	DNA Reference Code = DNA103881-1; NCBI GenBank number = JQ435460.1; NCBI GenBank number = JQ435409.1; NCBI GenBank number = JQ435318.1; NCBI GenBank number = JQ435223.1; NCBI GenBank number = JQ435162.1;

Species	ID on tree	MCZ DNA number	MCZ Inv. Zool. number	Latitude	Longitude	Locality	Specific locality	Tarsus condition	GenBank number
<i>Ethobunus</i> cf. <i>foliatus</i>	MX38812	DNA103881-2	81158	17.514278	-92.294861	Neotropics		sexually monomorphic	NCBI GenBank number = HE654048.1 DNA Reference Code = DNA103881-2; NCBI GenBank number = JQ435410.1; NCBI GenBank number = JQ435319.1; NCBI GenBank number = JQ435224.1; NCBI GenBank number = JQ435163.1; NCBI GenBank number = HE654049.1
<i>Ethobunus</i> cf. <i>foliatus</i>	MX3864	DNA103864	80720	17.12365	-91.63656	Neotropics	Lago Metzabok	sexually monomorphic	DNA Reference Code = DNA103864; NCBI GenBank number = HE654046; NCBI GenBank number = JQ435137; NCBI GenBank number = JQ435222; field number = LLAMA Wa-A-06-2-all
<i>Pachylicus</i> sp.	CR38801	DNA103880-1	80070	8.40667	-83.32833	Neotropics	13 km. SSW Pto. Jimenez	sexually monomorphic	DNA Reference Code = DNA103880; NCBI GenBank number = HE654038; NCBI GenBank number = HE654039; field number = LLAMA 6209
<i>Pachylicus</i> sp.	CR38802	DNA103880-2	80070	8.40667	-83.32833	Neotropics	13 km. SSW Pto. Jimenez	sexually monomorphic	DNA Reference Code = DNA103880; NCBI GenBank number = HE654038; NCBI GenBank number = HE654039; field number = LLAMA 6209
<i>Pachylicus spinatus</i> Goodnight & Goodnight, 1983	CR3876	DNA103876	79937	8.78658	-82.95987	Neotropics	Las Cruces Biological Station	sexually monomorphic	DNA Reference Code = DNA103876; NCBI GenBank number = HE654034; NCBI GenBank number = HE654035; NCBI GenBank number = JQ435145; NCBI GenBank number = JQ435146; NCBI GenBank number = JQ435265; NCBI GenBank number = JQ435295; NCBI GenBank number = JQ435324; NCBI GenBank number = JQ435358; NCBI GenBank number = JQ435453; field number = LLAMA MGB 514
<i>Ethobunus</i> sp.	CR3875	DNA103875	79937	8.78658	-82.95987	Neotropics	Las Cruces Biological Station	sexually dimorphic	DNA Reference Code = DNA103875; DNA Reference Code = DNA103876; NCBI GenBank number = HE654034; NCBI GenBank number = HE654035; NCBI GenBank number = JQ435145; NCBI GenBank number = JQ435146; NCBI GenBank number = JQ435265; NCBI GenBank number = JQ435295; NCBI GenBank number = JQ435324; NCBI GenBank number = JQ435358; NCBI GenBank number = JQ435453; field number = LLAMA MGB 514
<i>Ethobunus tarsalis</i> Banks, 1909	CR3874	DNA103874	81222	8.94997	-82.83375	Neotropics	Las Alturas Biological Station	sexually dimorphic	DNA Reference Code = DNA103874; NCBI GenBank number = HE654033; NCBI GenBank number = JQ435144; NCBI GenBank number = JQ435264; NCBI GenBank number = JQ435357; field number = LLAMA MGB 521
<i>Ethobunus zalmoxiformis</i> Roewer, 1949	CR1424	DNA101424	130955	10.208503	-84.215183	Neotropics	Volcán Poás	sexually dimorphic	DNA Reference Code = DNA101424; NCBI GenBank number = FJ475953; NCBI GenBank number = FJ475972; NCBI GenBank number = FJ495972;

Species	ID on tree	MCZ DNA number	MCZ Inv. Zool. number	Latitude	Longitude	Locality	Specific locality	Tarsus condition	GenBank number
<i>Ethobunus</i> sp.	NI39052	DNA103905-2	83070	11.883411	-85.97902	Neotropics	Volcán Mombacho, 10.6 km SSW Granada	sexually monomorphic	NCBI GenBank number = FJ786550; NCBI GenBank number = FJ796478; NCBI GenBank number = FJ796490.2; NCBI GenBank number = FJ796494; NCBI GenBank number = FJ796501; NCBI GenBank number = JF786550 DNA Reference Code = DNA103905; NCBI GenBank number = HE654053; field number = LLAMA MGB 1170
<i>Ethobunus</i> sp.	GM4844	DNA104844	89625	16.44147064	-89.53447	Neotropics	13 km NW Machaquilá	sexually monomorphic	DNA Reference Code = DNA104844; NCBI GenBank number = HE654078; NCBI GenBank number = JQ435159; NCBI GenBank number = JQ435226; NCBI GenBank number = JQ435321; field number = LLAMA Wa-B-06-2-all
Additional terminal sequenced <i>Zalmoxis</i> sp.		MCZ DNA number DNA106901	Invertebrate Zoology number 131205	Latitude not available	Longitude not available	Locality Vanuatu			MT554641; MT583735; MT559433; MT568927

Reference

Sharma, P. P., and Giribet, G. (2012). Out of the Neotropics: Late Cretaceous colonization of Australasia by American arthropods. *Proceedings of the Royal Society of London – B. Biological Sciences* **279**, 3501–3509 [doi:10.1098/rspb.2012.0675](https://doi.org/10.1098/rspb.2012.0675).