

Supplementary Material

Systematic revision of the Indo-West Pacific bubble-snails of the genus *Haloa* (Pilsbry, 1921) (Cephalaspidea : Haminoeidae)

Trond R. Oskars^{A,B,*} and *Manuel António E. Malaquias*^A

^ADepartment of Natural History, University Museum of Bergen, University of Bergen, PB7800, NO-5020 Bergen, Norway

^BMøreforskning AS, Research group Ocean and Health, Campus Kristiansund, Fosnagata 13, NO-6509 Kristiansund, Norway

*Correspondence to: Email: trond.roger.oskars@moreforskning.no; trondoskars@gmail.com

Figure S1. Output of the Automatic Barcode Gap Discovery (ABGD) web-interface (<http://wwwabi.snv.jussieu.fr/public/abgd/>) for the full dataset showing results of the Jukes-Cantor (JC69) model. A. Recovered groups. B. Histogram of distances. C. Ranked distances. D. Initial and recursive partitions.

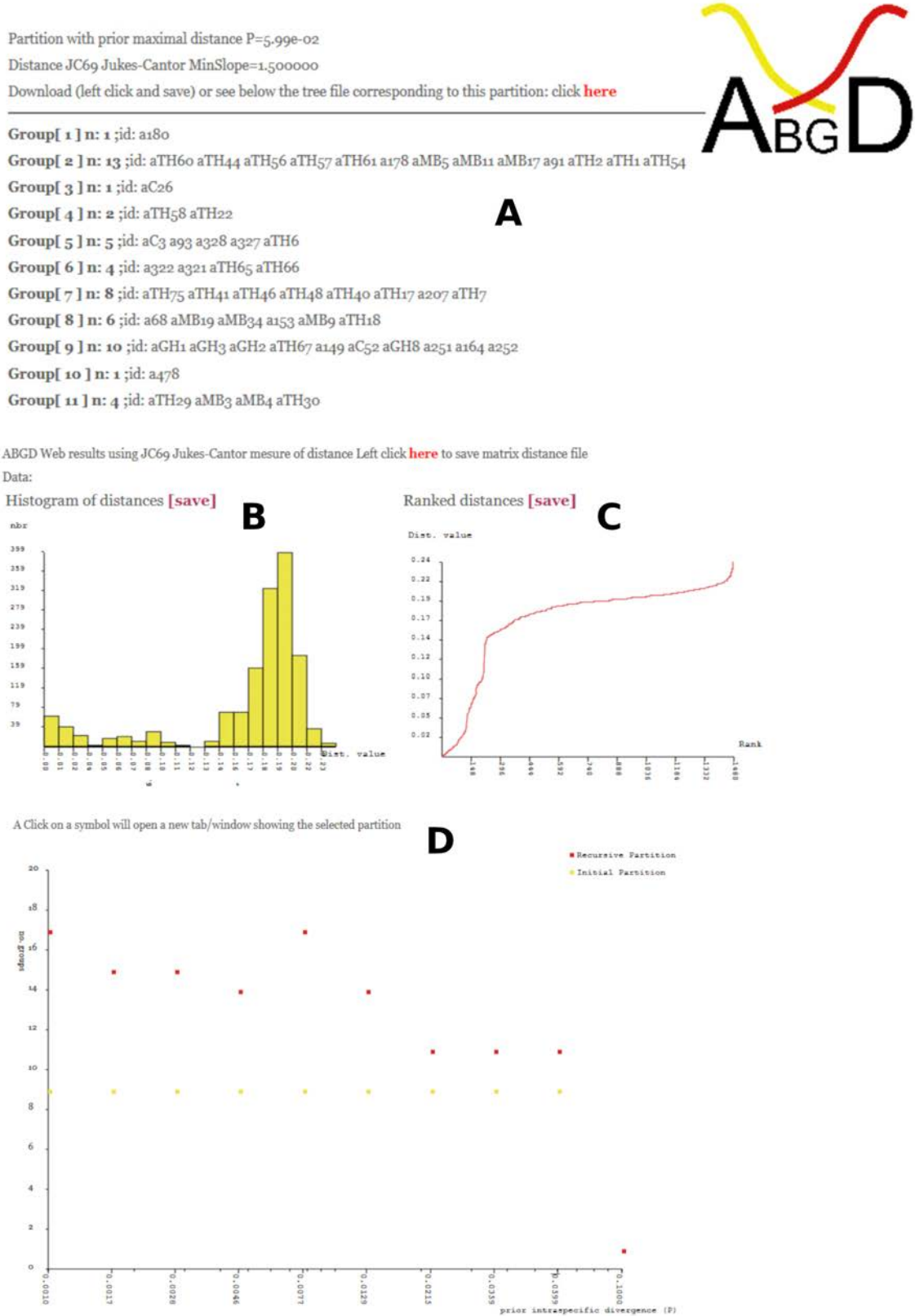


Figure S2. Output of the Automatic Barcode Gap Discovery (ABGD) web-interface (<http://wwwabi.snv.jussieu.fr/public/abgd/>) for the reduced dataset showing results of the Kimura (K80) model. A. Recovered groups. B. Histogram of distances. C. Ranked distances. D. Initial and recursive partitions.

Initial Partition with prior maximal distance $P=2.15e-02$
 Distance K80 Kimura MinSlope=1.000000
 Download (left click and save) or see below the tree file corresponding to this partition: click [here](#)



- Group[1] n: 1 ;id: a18o
- Group[2] n: 4 ;id: a91 aTH2 aTH1 aTH54
- Group[3] n: 1 ;id: aC26
- Group[4] n: 2 ;id: aTH58 aTH22
- Group[5] n: 5 ;id: aC3 a93 a328 a327 aTH6
- Group[6] n: 1 ;id: a478
- Group[7] n: 4 ;id: aTH29 aMB3 aMB4 aTH30
- Group[8] n: 4 ;id: a322 a321 aTH65 aTH66
- Group[9] n: 8 ;id: aTH75 aTH41 aTH46 aTH48 aTH40 aTH17 a207 aTH7
- Group[10] n: 6 ;id: a68 aMB19 aMB34 a153 aMB9 aTH18
- Group[11] n: 10 ;id: aGH1 aGH3 aGH2 aTH67 a149 aC52 aGH8 a251 a164 a252

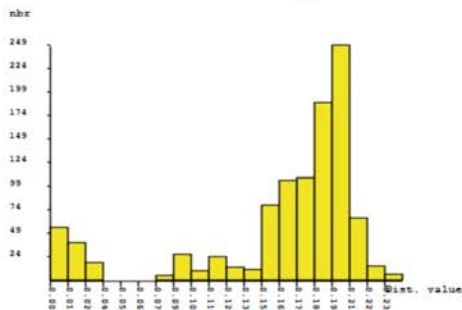
A

ABGD Web results using K80 Kimura mesure of distance Left click [here](#) to save matrix distance file

Data:

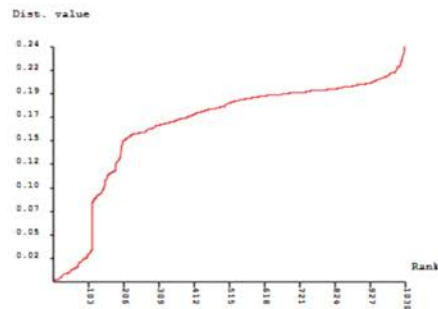
Histogram of distances [\[save\]](#)

B



Ranked distances [\[save\]](#)

C



A Click on a symbol will open a new tab/window showing the selected partition

D

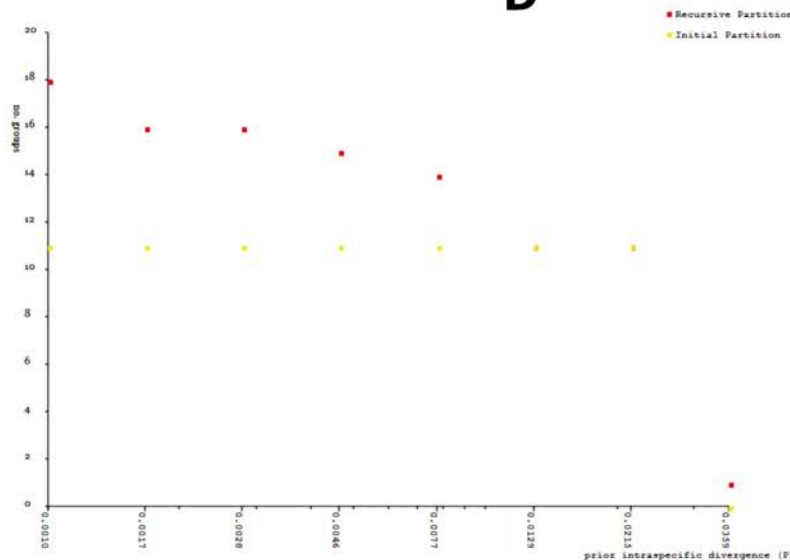


Figure S3. Output of the Automatic Barcode Gap Discovery (ABGD) web-interface (<http://wwwabi.snv.jussieu.fr/public/abgd/>) for the full dataset showing results of the Simple Distance model for reduced dataset. A. Recovered groups for P distance 1.2 %. B. Recovered groups for P distance 5.9%. C. Histogram of distances. D. Ranked distances. E. Initial and recursive partitions.

