

Supplementary Material

An integrative approach reveals high species diversity in the primitively segmented spider genus *Songthela* (Mesothelae: Liphistiidae) from Hunan, China

Dengqing Li^A, *Zhaoyang Chen*^A, *Fengxiang Liu*^B, *Daiqin Li*^{C,*} and *Xin Xu*^{A,*}

^ACollege of Life Sciences, Hunan Normal University, 36 Lushan Road, Changsha, 410081, Hunan Province, PR China

^BState Key Laboratory of Biocatalysis and Enzyme Engineering, and Centre for Behavioural Ecology and Evolution, School of Life Sciences, Hubei University, 368 Youyi Road, Wuhan, 430062, Hubei Province, PR China

^CDepartment of Biological Sciences, National University of Singapore, 14 Science Drive 4, Singapore 117543, Singapore

*Correspondence to: Email: dbslidq@nus.edu.sg; xuxin@hunnu.edu.cn

Table S1. Samples used in phylogenetic analysis and species delimitation: species group, specimen label, taxon name, sample collection locality with coordinates and GenBank accession numbers

Species group	Specimen code	Genus	Species	Latitude	Longitude	Elevation (m)	Locality	COI GenBank accession code
<i>bispina</i>	XUX-2018-438A	<i>Songthela</i>	<i>aokoulong</i> sp. nov.	28.137	109.749	210	Jiefangyan Town, Luxi County, Xiangxi autonomous Prefecture, Hunan, China	OK351172
	XUX-2018-439	<i>Songthela</i>	<i>aokoulong</i> sp. nov.	28.137	109.749	210	Jiefangyan Town, Luxi County, Xiangxi autonomous Prefecture, Hunan, China	OK351173
	XUX-2018-438	<i>Songthela</i>	<i>aokoulong</i> sp. nov.	28.137	109.749	210	Jiefangyan Town, Luxi County, Xiangxi autonomous Prefecture, Hunan, China	OK351171
	XUX-2018-441	<i>Songthela</i>	<i>aokoulong</i> sp. nov.	28.137	109.749	210	Jiefangyan Town, Luxi County, Xiangxi autonomous Prefecture, Hunan, China	OK351174
	XUX-2018-441A	<i>Songthela</i>	<i>aokoulong</i> sp. nov.	28.137	109.749	210	Jiefangyan Town, Luxi County, Xiangxi autonomous Prefecture, Hunan, China	OK351175
	XUX-2018-442	<i>Songthela</i>	<i>aokoulong</i> sp. nov.	28.137	109.749	210	Jiefangyan Town, Luxi County, Xiangxi autonomous Prefecture, Hunan, China	OK351176
	XUX-2018-445	<i>Songthela</i>	<i>aokoulong</i> sp. nov.	28.137	109.749	210	Jiefangyan Town, Luxi County, Xiangxi autonomous Prefecture, Hunan, China	OK351178
	XUX-2018-447	<i>Songthela</i>	<i>aokoulong</i> sp. nov.	28.137	109.749	222	Jiefangyan Town, Luxi County, Xiangxi autonomous Prefecture, Hunan, China	OK351179
	XUX-2018-443	<i>Songthela</i>	<i>aokoulong</i> sp. nov.	28.137	109.749	210	Jiefangyan Town, Luxi County, Xiangxi autonomous Prefecture, Hunan, China	OK351177
	XUX-2018-448	<i>Songthela</i>	<i>aokoulong</i> sp. nov.	28.127	109.822	393	Matadeng Village, Luxi County, Xiangxi autonomous Prefecture, Hunan, China	OK351181
	XUX-2018-437	<i>Songthela</i>	<i>aokoulong</i> sp. nov.	28.063	109.729	259	Mujiangping Town, Luxi County, Xiangxi autonomous Prefecture, Hunan, China	OK351168
	XUX-2018-437A	<i>Songthela</i>	<i>aokoulong</i> sp. nov.	28.063	109.729	259	Mujiangping Town, Luxi County, Xiangxi autonomous Prefecture, Hunan, China	OK351169
	XUX-2018-437B	<i>Songthela</i>	<i>aokoulong</i> sp. nov.	28.063	109.729	259	Mujiangping Town, Luxi County, Xiangxi autonomous Prefecture, Hunan, China	OK351170
	XUX-2018-447A	<i>Songthela</i>	<i>aokoulong</i> sp. nov.	28.063	109.729	259	Jiefangyan Town, Luxi County, Xiangxi autonomous Prefecture, Hunan, China	OK351180
	XUX-2018-467	<i>Songthela</i>	<i>huayangxi</i> sp. nov.	28.730	111.524	123	Huayanxi, Dingcheng District, Changde City, Hunan, China	OK351128
	XUX-2018-471	<i>Songthela</i>	<i>huayangxi</i> sp. nov.	28.702	111.526	90	Huayanxi, Dingcheng District, Changde City, Hunan, China	OK351132
	XUX-2018-468	<i>Songthela</i>	<i>huayangxi</i> sp. nov.	28.702	111.526	90	Huayanxi, Dingcheng District, Changde City, Hunan, China	OK351129
	XUX-2018-469	<i>Songthela</i>	<i>huayangxi</i> sp. nov.	28.702	111.526	90	Huayanxi, Dingcheng District, Changde City, Hunan, China	OK351130
	XUX-2018-470	<i>Songthela</i>	<i>huayangxi</i> sp. nov.	28.702	111.526	90	Huayanxi, Dingcheng District, Changde City, Hunan, China	OK351131
	XUX-2018-473	<i>Songthela</i>	<i>huayangxi</i> sp. nov.	28.702	111.526	90	Huayanxi, Dingcheng District, Changde City, Hunan, China	OK351133
XUX-2018-466	<i>Songthela</i>	<i>huayangxi</i> sp. nov.	28.730	111.524	123	Huayanxi, Dingcheng District, Changde City, Hunan, China	OK351127	
XUX-2011-078	<i>Songthela</i>	<i>zizhu</i> sp. nov.	27.277	112.700	758	Mt. Heng, Hengyang, Hunan, China	OK351106	
XUX-2011-043	<i>Songthela</i>	<i>zizhu</i> sp. nov.	27.271	112.715	378	Mt. Heng, Hengyang, Hunan, China	OK351089	
XUX-2011-039	<i>Songthela</i>	<i>zizhu</i> sp. nov.	27.270	112.715	369	Mt. Heng, Hengyang, Hunan, China	OK351087	

XUX-2011-041	<i>Songthela</i>	<i>zizhu</i> sp. nov.	27.271	112.715	379	Mt. Heng, Hengyang, Hunan, China	OK351088
XUX-2011-044	<i>Songthela</i>	<i>zizhu</i> sp. nov.	27.271	112.715	378	Mt. Heng, Hengyang, Hunan, China	OK351090
XUX-2011-045	<i>Songthela</i>	<i>zizhu</i> sp. nov.	27.271	112.715	378	Mt. Heng, Hengyang, Hunan, China	OK351091
XUX-2011-046	<i>Songthela</i>	<i>zizhu</i> sp. nov.	27.271	112.715	383	Mt. Heng, Hengyang, Hunan, China	OK351092
XUX-2011-048	<i>Songthela</i>	<i>zizhu</i> sp. nov.	27.271	112.715	385	Mt. Heng, Hengyang, Hunan, China	OK351093
XUX-2011-049	<i>Songthela</i>	<i>zizhu</i> sp. nov.	27.271	112.715	385	Mt. Heng, Hengyang, Hunan, China	OK351094
XUX-2011-050	<i>Songthela</i>	<i>zizhu</i> sp. nov.	27.271	112.715	385	Mt. Heng, Hengyang, Hunan, China	OK351095
XUX-2011-052	<i>Songthela</i>	<i>zizhu</i> sp. nov.	27.271	112.715	385	Mt. Heng, Hengyang, Hunan, China	OK351096
XUX-2011-064	<i>Songthela</i>	<i>zizhu</i> sp. nov.	27.284	112.694	955	Mt. Heng, Hengyang, Hunan, China	OK351098
XUX-2011-065	<i>Songthela</i>	<i>zizhu</i> sp. nov.	27.284	112.694	955	Mt. Heng, Hengyang, Hunan, China	OK351099
XUX-2011-067	<i>Songthela</i>	<i>zizhu</i> sp. nov.	27.284	112.694	957	Mt. Heng, Hengyang, Hunan, China	OK351100
XUX-2011-069	<i>Songthela</i>	<i>zizhu</i> sp. nov.	27.282	112.696	874	Mt. Heng, Hengyang, Hunan, China	OK351101
XUX-2011-073	<i>Songthela</i>	<i>zizhu</i> sp. nov.	27.282	112.696	860	Mt. Heng, Hengyang, Hunan, China	OK351102
XUX-2011-074	<i>Songthela</i>	<i>zizhu</i> sp. nov.	27.281	112.696	858	Mt. Heng, Hengyang, Hunan, China	OK351103
XUX-2011-076	<i>Songthela</i>	<i>zizhu</i> sp. nov.	27.281	112.696	858	Mt. Heng, Hengyang, Hunan, China	OK351104
XUX-2011-077	<i>Songthela</i>	<i>zizhu</i> sp. nov.	27.281	112.696	857	Mt. Heng, Hengyang, Hunan, China	OK351105
XUX-2011-079	<i>Songthela</i>	<i>zizhu</i> sp. nov.	27.277	112.700	758	Mt. Heng, Hengyang, Hunan, China	OK351107
XUX-2011-080	<i>Songthela</i>	<i>zizhu</i> sp. nov.	27.277	112.700	758	Mt. Heng, Hengyang, Hunan, China	OK351108
XUX-2011-082	<i>Songthela</i>	<i>zizhu</i> sp. nov.	27.277	112.700	758	Mt. Heng, Hengyang, Hunan, China	OK351109
XUX-2011-085	<i>Songthela</i>	<i>zizhu</i> sp. nov.	27.277	112.700	758	Mt. Heng, Hengyang, Hunan, China	OK351111
XUX-2011-087	<i>Songthela</i>	<i>zizhu</i> sp. nov.	27.277	112.700	758	Mt. Heng, Hengyang, Hunan, China	OK351112
XUX-2011-088	<i>Songthela</i>	<i>zizhu</i> sp. nov.	27.277	112.700	758	Mt. Heng, Hengyang, Hunan, China	OK351113
XUX-2011-089	<i>Songthela</i>	<i>zizhu</i> sp. nov.	27.275	112.694	654	Mt. Heng, Hengyang, Hunan, China	OK351114
XUX-2011-091	<i>Songthela</i>	<i>zizhu</i> sp. nov.	27.275	112.694	650	Mt. Heng, Hengyang, Hunan, China	OK351115
XUX-2011-092	<i>Songthela</i>	<i>zizhu</i> sp. nov.	27.275	112.694	650	Mt. Heng, Hengyang, Hunan, China	OK351116
XUX-2011-053	<i>Songthela</i>	<i>zizhu</i> sp. nov.	27.284	112.694	959	Mt. Heng, Hengyang, Hunan, China	OK351097
XUX-2011-084	<i>Songthela</i>	<i>zizhu</i> sp. nov.	27.277	112.700	758	Mt. Heng, Hengyang, Hunan, China	OK351110
XUX-2019-242A	<i>Songthela</i>	<i>bispina</i> sp. nov.	29.343	110.467	565	Zhangjiajie National Forest Park, Zhangjiajie City, Hunan, China	OK351255
XUX-2019-227	<i>Songthela</i>	<i>bispina</i> sp. nov.	29.320	110.431	613	Zhangjiajie National Forest Park, Zhangjiajie City, Hunan, China	OK351253
XUX-2019-239	<i>Songthela</i>	<i>bispina</i> sp. nov.	29.346	110.464	542	Zhangjiajie National Forest Park, Zhangjiajie City, Hunan, China	OK351254
XUX-2011-169	<i>Songthela</i>	<i>bispina</i> sp. nov.	29.345	110.460	481	Zhangjiajie National Forest Park, Zhangjiajie City, Hunan, China	OK351236
XUX-2011-170	<i>Songthela</i>	<i>bispina</i> sp. nov.	29.342	110.457	505	Zhangjiajie National Forest Park, Zhangjiajie City, Hunan, China	KP229811*
XUX-2011-177	<i>Songthela</i>	<i>bispina</i> sp. nov.	29.344	110.461	496	Zhangjiajie National Forest Park, Zhangjiajie City, Hunan, China	OK351239
XUX-2011-185	<i>Songthela</i>	<i>bispina</i> sp. nov.	29.338	110.470	490	Zhangjiajie National Forest Park, Zhangjiajie City, Hunan, China	OK351241

XUX-2011-187	<i>Songthela</i>	<i>bispina</i> sp. nov.	29.338	110.470	531	Zhangjiajie National Forest Park, Zhangjiajie City, Hunan, China	OK351242
XUX-2011-187A	<i>Songthela</i>	<i>bispina</i> sp. nov.	29.338	110.470	531	Zhangjiajie National Forest Park, Zhangjiajie City, Hunan, China	OK351243
XUX-2011-187B	<i>Songthela</i>	<i>bispina</i> sp. nov.	29.338	110.470	531	Zhangjiajie National Forest Park, Zhangjiajie City, Hunan, China	OK351244
XUX-2011-190B	<i>Songthela</i>	<i>bispina</i> sp. nov.	29.338	110.470	532	Zhangjiajie National Forest Park, Zhangjiajie City, Hunan, China	OK351247
XUX-2011-191	<i>Songthela</i>	<i>bispina</i> sp. nov.	29.338	110.470	531	Zhangjiajie National Forest Park, Zhangjiajie City, Hunan, China	OK351248
XUX-2011-192	<i>Songthela</i>	<i>bispina</i> sp. nov.	29.338	110.470	531	Zhangjiajie National Forest Park, Zhangjiajie City, Hunan, China	OK351249
XUX-2018-449	<i>Songthela</i>	<i>bispina</i> sp. nov.	28.252	110.120	128	Luxi County, Xiangxi autonomous Prefecture, Hunan, China	OK351182
XUX-2018-450	<i>Songthela</i>	<i>bispina</i> sp. nov.	28.252	110.120	128	Luxi County, Xiangxi autonomous Prefecture, Hunan, China	OK351183
XUX-2018-451	<i>Songthela</i>	<i>bispina</i> sp. nov.	28.252	110.120	128	Luxi County, Xiangxi autonomous Prefecture, Hunan, China	OK351184
XUX-2018-452	<i>Songthela</i>	<i>bispina</i> sp. nov.	28.252	110.120	128	Luxi County, Xiangxi autonomous Prefecture, Hunan, China	OK351185
XUX-2018-454	<i>Songthela</i>	<i>bispina</i> sp. nov.	28.252	110.120	128	Luxi County, Xiangxi autonomous Prefecture, Hunan, China	OK351187
XUX-2018-455	<i>Songthela</i>	<i>bispina</i> sp. nov.	28.252	110.120	128	Luxi County, Xiangxi autonomous Prefecture, Hunan, China	OK351188
XUX-2018-456	<i>Songthela</i>	<i>bispina</i> sp. nov.	28.296	110.333	170	Yuanling County, Huaihua City, Hunan, China	OK351221
XUX-2018-457	<i>Songthela</i>	<i>bispina</i> sp. nov.	28.296	110.333	170	Yuanling County, Huaihua City, Hunan, China	OK351224
XUX-2018-460	<i>Songthela</i>	<i>bispina</i> sp. nov.	28.449	110.518	376	Liangshuijing Town, Yuanling County, Huaihua City, Hunan, China	OK351230
XUX-2018-461	<i>Songthela</i>	<i>bispina</i> sp. nov.	28.461	110.546	367	Liangshuijing Town, Yuanling County, Huaihua City, Hunan, China	OK351231
XUX-2018-463	<i>Songthela</i>	<i>bispina</i> sp. nov.	28.462	110.546	366	Liangshuijing Town, Yuanling County, Huaihua City, Hunan, China	OK351234
XUX-2018-465	<i>Songthela</i>	<i>bispina</i> sp. nov.	28.462	110.546	363	Liangshuijing Town, Yuanling County, Huaihua City, Hunan, China	OK351235
XUX-2019-208	<i>Songthela</i>	<i>bispina</i> sp. nov.	29.387	110.495	1156	Zhangjiajie National Forest Park, Zhangjiajie City, Hunan, China	OK351197
XUX-2019-211	<i>Songthela</i>	<i>bispina</i> sp. nov.	29.386	110.495	1154	Zhangjiajie National Forest Park, Zhangjiajie City, Hunan, China	OK351198
XUX-2019-242	<i>Songthela</i>	<i>bispina</i> sp. nov.	29.343	110.467	565	Zhangjiajie National Forest Park, Zhangjiajie City, Hunan, China	OK351257
XUX-2011-174	<i>Songthela</i>	<i>bispina</i> sp. nov.	29.344	110.461	496	Zhangjiajie National Forest Park, Zhangjiajie City, Hunan, China	OK351237
XUX-2011-175	<i>Songthela</i>	<i>bispina</i> sp. nov.	29.344	110.461	496	Zhangjiajie National Forest Park, Zhangjiajie City, Hunan, China	OK351238
XUX-2011-181	<i>Songthela</i>	<i>bispina</i> sp. nov.	29.344	110.460	496	Zhangjiajie National Forest Park, Zhangjiajie City, Hunan, China	OK351240
XUX-2011-188	<i>Songthela</i>	<i>bispina</i> sp. nov.	29.338	110.470	532	Zhangjiajie National Forest Park, Zhangjiajie City, Hunan, China	OK351246
XUX-2018-452A	<i>Songthela</i>	<i>bispina</i> sp. nov.	28.252	110.120	128	Luxi County, Xiangxi autonomous Prefecture, Hunan, China	OK351186
XUX-2018-456A	<i>Songthela</i>	<i>bispina</i> sp. nov.	28.296	110.333	170	Yuanling County, Huaihua City, Hunan, China	OK351222

	XUX-2018-456B	<i>Songthela</i>	<i>bispina</i> sp. nov.	28.296	110.333	170	Yuanling County, Huaihua City, Hunan, China	OK351223
	XUX-2018-458	<i>Songthela</i>	<i>bispina</i> sp. nov.	28.445	110.498	218	Yuanling County, Huaihua City, Hunan, China	OK351225
	XUX-2018-458A	<i>Songthela</i>	<i>bispina</i> sp. nov.	28.445	110.498	218	Yuanling County, Huaihua City, Hunan, China	OK351226
	XUX-2018-459	<i>Songthela</i>	<i>bispina</i> sp. nov.	28.449	110.518	376	Yuanling County, Huaihua City, Hunan, China	OK351227
	XUX-2018-459A	<i>Songthela</i>	<i>bispina</i> sp. nov.	28.449	110.518	376	Yuanling County, Huaihua City, Hunan, China	OK351228
	XUX-2018-459B	<i>Songthela</i>	<i>bispina</i> sp. nov.	28.449	110.518	376	Yuanling County, Huaihua City, Hunan, China	OK351229
	XUX-2018-462	<i>Songthela</i>	<i>bispina</i> sp. nov.	28.461	110.546	367	Liangshuijing Town, Yuanling County, Huaihua City, Hunan, China	OK351232
	XUX-2018-462A	<i>Songthela</i>	<i>bispina</i> sp. nov.	28.461	110.546	367	Liangshuijing Town, Yuanling County, Huaihua City, Hunan, China	OK351233
<i>unispina</i>	XUX-2019-232	<i>Songthela</i>	<i>tianmen</i> sp. nov.	29.048	110.481	1424	Mt. Tianmen, Zhangjiajie City, Hunan, China	OK351193
	XUX-2019-233	<i>Songthela</i>	<i>tianmen</i> sp. nov.	29.048	110.481	1423	Mt. Tianmen, Zhangjiajie City, Hunan, China	OK351194
	XUX-2019-231C	<i>Songthela</i>	<i>tianmen</i> sp. nov.	29.048	110.481	1424	Mt. Tianmen, Zhangjiajie City, Hunan, China	OK351192
	XUX-2019-238B	<i>Songthela</i>	<i>tianmen</i> sp. nov.	29.050	110.475	1453	Mt. Tianmen, Zhangjiajie City, Hunan, China	OK351195
	XUX-2018-279	<i>Songthela</i>	<i>unispina</i> sp. nov.	26.349	110.776	536	Langshan National Geological Park, Xinning County, Shaoyang City, Hunan, China	OK351164
	XUX-2018-267	<i>Songthela</i>	<i>unispina</i> sp. nov.	26.277	110.738	507	Langshan National Geological Park, Xinning County, Shaoyang City, Hunan, China	OK351155
	XUX-2018-260	<i>Songthela</i>	<i>unispina</i> sp. nov.	26.279	110.748	433	Langshan National Geological Park, Xinning County, Shaoyang City, Hunan, China	OK351142
	XUX-2018-261	<i>Songthela</i>	<i>unispina</i> sp. nov.	26.278	110.740	497	Langshan National Geological Park, Xinning County, Shaoyang City, Hunan, China	OK351143
	XUX-2018-259	<i>Songthela</i>	<i>unispina</i> sp. nov.	26.279	110.748	400	Langshan National Geological Park, Xinning County, Shaoyang City, Hunan, China	OK351141
	XUX-2018-273	<i>Songthela</i>	<i>unispina</i> sp. nov.	26.273	110.733	756	Langshan National Geological Park, Xinning County, Shaoyang City, Hunan, China	OK351156
	XUX-2018-277	<i>Songthela</i>	<i>unispina</i> sp. nov.	26.348	110.775	499	Langshan National Geological Park, Xinning County, Shaoyang City, Hunan, China	OK351162
	XUX-2018-278	<i>Songthela</i>	<i>unispina</i> sp. nov.	26.348	110.775	504	Langshan National Geological Park, Xinning County, Shaoyang City, Hunan, China	OK351163
	XUX-2018-282	<i>Songthela</i>	<i>unispina</i> sp. nov.	26.348	110.775	467	Langshan National Geological Park, Xinning County, Shaoyang City, Hunan, China	OK351167
	XUX-2018-273A	<i>Songthela</i>	<i>unispina</i> sp. nov.	26.273	110.733	756	Langshan National Geological Park, Xinning County, Shaoyang City, Hunan, China	OK351157
	XUX-2018-273B	<i>Songthela</i>	<i>unispina</i> sp. nov.	26.273	110.733	756	Langshan National Geological Park, Xinning County, Shaoyang City, Hunan, China	OK351158
	XUX-2018-273C	<i>Songthela</i>	<i>unispina</i> sp. nov.	26.273	110.733	756	Langshan National Geological Park, Xinning County, Shaoyang City, Hunan, China	OK351159
	XUX-2018-274	<i>Songthela</i>	<i>unispina</i> sp. nov.	26.347	110.773	457	Langshan National Geological Park, Xinning County, Shaoyang City, Hunan, China	OK351160
	XUX-2018-276	<i>Songthela</i>	<i>unispina</i> sp. nov.	26.347	110.774	472	Langshan National Geological Park, Xinning County, Shaoyang City, Hunan, China	OK351161
	XUX-2018-280	<i>Songthela</i>	<i>unispina</i> sp. nov.	26.349	110.776	531	Langshan National Geological Park, Xinning County, Shaoyang City, Hunan, China	OK351165

	XUX-2018-281	<i>Songthela</i>	<i>unispina</i> sp. nov.	26.348	110.775	467	Langshan National Geological Park, Xinning County, Shaoyang City, Hunan, China	OK351166
	XUX-2018-265A	<i>Songthela</i>	<i>lianhe</i> sp. nov.	26.372	110.784	364	Langshan Town, Xinning Country, Shaoyang City, Hunan, China	OK351151
	XUX-2018-262	<i>Songthela</i>	<i>lianhe</i> sp. nov.	26.395	110.814	331	Langshan National Geological Park, Xinning County, Shaoyang City, Hunan, China	OK351144
	XUX-2018-232	<i>Songthela</i>	<i>lianhe</i> sp. nov.	26.977	111.137	318	Huangtingshi Town, Shaoyang County, Shaoyang City, Hunan, China	OK351189
	XUX-2018-233	<i>Songthela</i>	<i>lianhe</i> sp. nov.	26.977	111.137	315	Huangtingshi Town, Shaoyang County, Shaoyang City, Hunan, China	OK351190
	XUX-2018-254	<i>Songthela</i>	<i>lianhe</i> sp. nov.	26.661	110.691	379	Longxi Town, Wugang City, Shaoyang City, Hunan, China	OK351201
	XUX-2018-255	<i>Songthela</i>	<i>lianhe</i> sp. nov.	26.661	110.691	379	Longxi Town, Wugang City, Shaoyang City, Hunan, China	OK351202
	XUX-2018-283	<i>Songthela</i>	<i>lianhe</i> sp. nov.	26.688	110.644	478	Wugang City, Shaoyang City, Hunan, China	OK351207
	XUX-2018-285	<i>Songthela</i>	<i>lianhe</i> sp. nov.	26.688	110.643	472	Wugang City, Shaoyang City, Hunan, China	OK351213
	XUX-2018-263A	<i>Songthela</i>	<i>lianhe</i> sp. nov.	26.379	110.808	342	Langshan National Geological Park, Xinning County, Shaoyang City, Hunan, China	OK351145
	XUX-2018-263C	<i>Songthela</i>	<i>lianhe</i> sp. nov.	26.379	110.808	342	Langshan National Geological Park, Xinning County, Shaoyang City, Hunan, China	OK351146
	XUX-2018-263D	<i>Songthela</i>	<i>lianhe</i> sp. nov.	26.379	110.808	342	Langshan National Geological Park, Xinning County, Shaoyang City, Hunan, China	OK351147
	XUX-2018-263E	<i>Songthela</i>	<i>lianhe</i> sp. nov.	26.379	110.808	342	Langshan National Geological Park, Xinning County, Shaoyang City, Hunan, China	OK351148
	XUX-2018-264	<i>Songthela</i>	<i>lianhe</i> sp. nov.	26.372	110.784	364	Langshan Town, Xinning Country, Shaoyang City, Hunan, China	OK351149
	XUX-2018-265	<i>Songthela</i>	<i>lianhe</i> sp. nov.	26.372	110.784	364	Langshan Town, Xinning Country, Shaoyang City, Hunan, China	OK351150
	XUX-2018-265B	<i>Songthela</i>	<i>lianhe</i> sp. nov.	26.372	110.784	364	Langshan Town, Xinning Country, Shaoyang City, Hunan, China	OK351152
	XUX-2018-266	<i>Songthela</i>	<i>lianhe</i> sp. nov.	26.372	110.784	366	Langshan Town, Xinning Country, Shaoyang City, Hunan, China	OK351153
	XUX-2018-266A	<i>Songthela</i>	<i>lianhe</i> sp. nov.	26.372	110.784	366	Langshan Town, Xinning Country, Shaoyang City, Hunan, China	OK351154
	XUX-2018-257	<i>Songthela</i>	<i>lianhe</i> sp. nov.	26.661	110.691	372	Longxi Town, Wugang City, Shaoyang City, Hunan, China	OK351204
	XUX-2018-258	<i>Songthela</i>	<i>lianhe</i> sp. nov.	26.661	110.691	370	Longxi Town, Wugang City, Shaoyang City, Hunan, China	OK351206
	XUX-2018-283A	<i>Songthela</i>	<i>lianhe</i> sp. nov.	26.688	110.644	478	Guanshanling, Wugang City, Shaoyang City, Hunan, China	OK351208
	XUX-2018-283B	<i>Songthela</i>	<i>lianhe</i> sp. nov.	26.688	110.644	478	Guanshanling, Wugang City, Shaoyang City, Hunan, China	OK351209
	XUX-2018-283C	<i>Songthela</i>	<i>lianhe</i> sp. nov.	26.688	110.644	478	Guanshanling, Wugang City, Shaoyang City, Hunan, China	OK351210
	XUX-2018-284	<i>Songthela</i>	<i>lianhe</i> sp. nov.	26.688	110.643	477	Guanshanling, Wugang City, Shaoyang City, Hunan, China	OK351211
	XUX-2018-284A	<i>Songthela</i>	<i>lianhe</i> sp. nov.	26.688	110.643	477	Guanshanling, Wugang City, Shaoyang City, Hunan, China	OK351212
	XUX-2018-256A	<i>Songthela</i>	<i>lianhe</i> sp. nov.	26.661	110.691	373	Longxi Town, Wugang City, Shaoyang City, Hunan, China	OK351203
	XUX-2018-257A	<i>Songthela</i>	<i>lianhe</i> sp. nov.	26.661	110.691	372	Longxi Town, Wugang City, Shaoyang City, Hunan, China	OK351205
<i>multidentata</i>	XUX-2018-311	<i>Songthela</i>	<i>dapo</i> sp. nov.	26.682	109.582	351	Jingzhou autonomous County, Huaihua City, Hunan, China	OK351079
	XUX-2018-310	<i>Songthela</i>	<i>dapo</i> sp. nov.	26.682	109.582	351	Jingzhou autonomous County, Huaihua City, Hunan, China	OK351078

XUX-2018-313	<i>Songthela</i>	<i>multidentata</i> sp. nov.	26.682	109.582	351	Jingzhou autonomous County, Huaihua City, Hunan, China	OK351081
XUX-2018-295B	<i>Songthela</i>	<i>multidentata</i> sp. nov.	26.596	109.653	465	Mt. Fei, Jingzhou autonomous County, Huaihua City, Hunan, China	OK351135
XUX-2018-293	<i>Songthela</i>	<i>multidentata</i> sp. nov.	26.596	109.653	465	Mt. Fei, Jingzhou autonomous County, Huaihua City, Hunan, China	OK351134
XUX-2018-296	<i>Songthela</i>	<i>multidentata</i> sp. nov.	26.596	109.653	465	Mt. Fei, Jingzhou autonomous County, Huaihua City, Hunan, China	OK351136
XUX-2018-297	<i>Songthela</i>	<i>multidentata</i> sp. nov.	26.596	109.653	465	Mt. Fei, Jingzhou autonomous County, Huaihua City, Hunan, China	OK351137
XUX-2018-297B	<i>Songthela</i>	<i>multidentata</i> sp. nov.	26.596	109.653	465	Mt. Fei, Jingzhou autonomous County, Huaihua City, Hunan, China	OK351138
XUX-2018-300	<i>Songthela</i>	<i>multidentata</i> sp. nov.	26.596	109.653	465	Mt. Fei, Jingzhou autonomous County, Huaihua City, Hunan, China	OK351139
XUX-2018-303	<i>Songthela</i>	<i>multidentata</i> sp. nov.	26.600	109.647	614	Mt. Fei, Jingzhou autonomous County, Huaihua City, Hunan, China	OK351140
XUX-2018-309	<i>Songthela</i>	<i>multidentata</i> sp. nov.	26.682	109.582	349	Jingzhou autonomous County, Huaihua City, Hunan, China	OK351077
XUX-2018-312	<i>Songthela</i>	<i>multidentata</i> sp. nov.	26.682	109.582	351	Jingzhou autonomous County, Huaihua City, Hunan, China	OK351080
XUX-2018-314	<i>Songthela</i>	<i>multidentata</i> sp. nov.	26.682	109.582	351	Jingzhou autonomous County, Huaihua City, Hunan, China	OK351082
XUX-2018-315	<i>Songthela</i>	<i>multidentata</i> sp. nov.	26.682	109.582	351	Jingzhou autonomous County, Huaihua City, Hunan, China	OK351083
XUX-2018-316	<i>Songthela</i>	<i>multidentata</i> sp. nov.	26.682	109.582	351	Jingzhou autonomous County, Huaihua City, Hunan, China	OK351084
XUX-2018-317	<i>Songthela</i>	<i>multidentata</i> sp. nov.	26.682	109.582	341	Jingzhou autonomous County, Huaihua City, Hunan, China	OK351085
XUX-2018-327	<i>Songthela</i>	<i>multidentata</i> sp. nov.	26.682	109.309	600	Dabaozi Town, Jingzhou autonomous County, Huaihua City, Hunan, China	OK351069
XUX-2018-331	<i>Songthela</i>	<i>multidentata</i> sp. nov.	26.682	109.310	603	Dabaozi Town, Jingzhou autonomous County, Huaihua City, Hunan, China	OK351070
XUX-2018-331A	<i>Songthela</i>	<i>multidentata</i> sp. nov.	26.682	109.310	603	Dabaozi Town, Jingzhou autonomous County, Huaihua City, Hunan, China	OK351071
XUX-2018-332	<i>Songthela</i>	<i>multidentata</i> sp. nov.	26.682	109.310	601	Dabaozi Town, Jingzhou autonomous County, Huaihua City, Hunan, China	OK351072
XUX-2018-333	<i>Songthela</i>	<i>multidentata</i> sp. nov.	26.682	109.310	601	Dabaozi Town, Jingzhou autonomous County, Huaihua City, Hunan, China	OK351073
XUX-2018-334B	<i>Songthela</i>	<i>multidentata</i> sp. nov.	26.682	109.310	600	Dabaozi Town, Jingzhou autonomous County, Huaihua City, Hunan, China	OK351074
XUX-2018-334C	<i>Songthela</i>	<i>multidentata</i> sp. nov.	26.682	109.310	600	Dabaozi Town, Jingzhou autonomous County, Huaihua City, Hunan, China	OK351075
XUX-2018-307	<i>Songthela</i>	<i>multidentata</i> sp. nov.	26.670	109.624	349	Jingzhou autonomous County, Huaihua City, Hunan, China	OK351076
XUX-2018-318A	<i>Songthela</i>	<i>multidentata</i> sp. nov.	26.682	109.582	336	Jingzhou autonomous County, Huaihua City, Hunan, China	OK351086
XUX-2018-246	<i>Songthela</i>	<i>lingshang</i> sp. nov.	27.289	110.403	834	Hongjiang City, Huaihua City, Hunan, China	OK351121
XUX-2018-245	<i>Songthela</i>	<i>lingshang</i> sp. nov.	27.289	110.403	834	Hongjiang City, Huaihua City, Hunan, China	OK351119
XUX-2018-242	<i>Songthela</i>	<i>lingshang</i> sp. nov.	27.289	110.403	830	Hongjiang City, Huaihua City, Hunan, China	OK351117
XUX-2018-244	<i>Songthela</i>	<i>lingshang</i> sp. nov.	27.289	110.403	834	Hongjiang City, Huaihua City, Hunan, China	OK351118
XUX-2018-247	<i>Songthela</i>	<i>lingshang</i> sp. nov.	27.288	110.403	828	Hongjiang City, Huaihua City, Hunan, China	OK351122

	XUX-2018-248	<i>Songthela</i>	<i>lingshang</i> sp. nov.	27.288	110.403	828	Hongjiang City, Huaihua City, Hunan, China	OK351123
	XUX-2018-245A	<i>Songthela</i>	<i>lingshang</i> sp. nov.	27.289	110.403	834	Hongjiang City, Huaihua City, Hunan, China	OK351120
	XUX-2018-248A	<i>Songthela</i>	<i>lingshang</i> sp. nov.	27.288	110.403	828	Hongjiang City, Huaihua City, Hunan, China	OK351124
	XUX-2018-250	<i>Songthela</i>	<i>lingshang</i> sp. nov.	27.292	110.396	967	Hongjiang City, Huaihua City, Hunan, China	OK351125
	XUX-2011-134	<i>Songthela</i>	<i>xiujian</i> sp. nov.	27.281	110.147	201	Anjiang County, Hongjiang, Huaihua, Hunan, China	OK351217
	XUX-2011-132	<i>Songthela</i>	<i>xiujian</i> sp. nov.	27.281	110.147	201	Anjiang County, Hongjiang, Huaihua, Hunan, China	OK351215
	XUX-2011-130	<i>Songthela</i>	<i>xiujian</i> sp. nov.	27.277	110.144	202	Anjiang County, Hongjiang, Huaihua, Hunan, China	OK351214
	XUX-2011-133	<i>Songthela</i>	<i>xiujian</i> sp. nov.	27.281	110.147	201	Anjiang County, Hongjiang, Huaihua, Hunan, China	OK351216
	XUX-2011-135	<i>Songthela</i>	<i>xiujian</i> sp. nov.	27.281	110.147	202	Anjiang County, Hongjiang, Huaihua, Hunan, China	OK351218
	XUX-2011-136	<i>Songthela</i>	<i>xiujian</i> sp. nov.	27.281	110.147	202	Anjiang County, Hongjiang, Huaihua, Hunan, China	OK351219
	XUX-2011-142	<i>Songthela</i>	<i>xiujian</i> sp. nov.	27.281	110.147	206	Anjiang County, Hongjiang, Huaihua, Hunan, China	OK351220
Unassigned	XUX-2019-243	<i>Songthela</i>	<i>zimugang</i> sp. nov.	29.343	110.467	563	Zhangjiajie National Forest Park, Zhangjiajie City, Hunan, China	OK351256
	XUX-2019-214	<i>Songthela</i>	<i>zimugang</i> sp. nov.	29.388	110.489	1109	Zhangjiajie National Forest Park, Zhangjiajie City, Hunan, China	OK351200
	XUX-2019-206	<i>Songthela</i>	<i>zimugang</i> sp. nov.	29.388	110.494	1150	Zhangjiajie National Forest Park, Zhangjiajie City, Hunan, China	OK351196
	XUX-2019-212	<i>Songthela</i>	<i>zimugang</i> sp. nov.	29.388	110.489	1109	Zhangjiajie National Forest Park, Zhangjiajie City, Hunan, China	OK351199
	XUX-2019-218	<i>Songthela</i>	<i>zimugang</i> sp. nov.	29.347	110.434	937	Zhangjiajie National Forest Park, Zhangjiajie City, Hunan, China	OK351250
	XUX-2019-220	<i>Songthela</i>	<i>zimugang</i> sp. nov.	29.370	110.549	731	Suoxiyu Town, Wulingyuan District, Zhangjiajie City, Hunan, China	OK351191
	XUX-2019-223	<i>Songthela</i>	<i>zimugang</i> sp. nov.	29.318	110.431	616	Zhangjiajie National Forest Park, Zhangjiajie City, Hunan, China	OK351251
	XUX-2019-226	<i>Songthela</i>	<i>zimugang</i> sp. nov.	29.320	110.431	609	Zhangjiajie National Forest Park, Zhangjiajie City, Hunan, China	OK351252
	XUX-2019-230	<i>Songthela</i>	<i>zimugang</i> sp. nov.	29.321	110.430	597	Zhangjiajie National Forest Park, Zhangjiajie City, Hunan, China	OK351126
	XUX-2019-244	<i>Songthela</i>	<i>zimugang</i> sp. nov.	29.343	110.467	563	Zhangjiajie National Forest Park, Zhangjiajie City, Hunan, China	OK351258
	XUX-2011-168	<i>Songthela</i>	<i>zimugang</i> sp. nov.	29.345	110.460	481	Zhangjiajie National Forest Park, Zhangjiajie City, Hunan, China	KP229894*
	XUX-2011-187C	<i>Songthela</i>	<i>zimugang</i> sp. nov.	29.338	110.470	531	Zhangjiajie National Forest Park, Zhangjiajie City, Hunan, China	OK351245
Outgroup	XUX-2013-007	<i>Vinathela</i>	<i>cucphuongensis</i>	20.268	105.693		CucPhuong, Vietnam	KP229855*
	XUX-2012-152	<i>Vinathela</i>	<i>hongkong</i>	22.424	114.125		Hong Kong, China	KP229867*

* Sequences from GenBank.

Table S2 Result of the ABGD analysis

substitution model	Pmin/Pmax	X	Partition	Prior intraspecific divergence (P)							
				0.001	0.0017	0.0028	0.0046	0.0077	0.0129	0.0215	0.0359
K2P	0.001/0.1	1.5	Initial	12	12	12	12	12	12	12	12
			Recursive	52	28	28	28	24	18	18	12

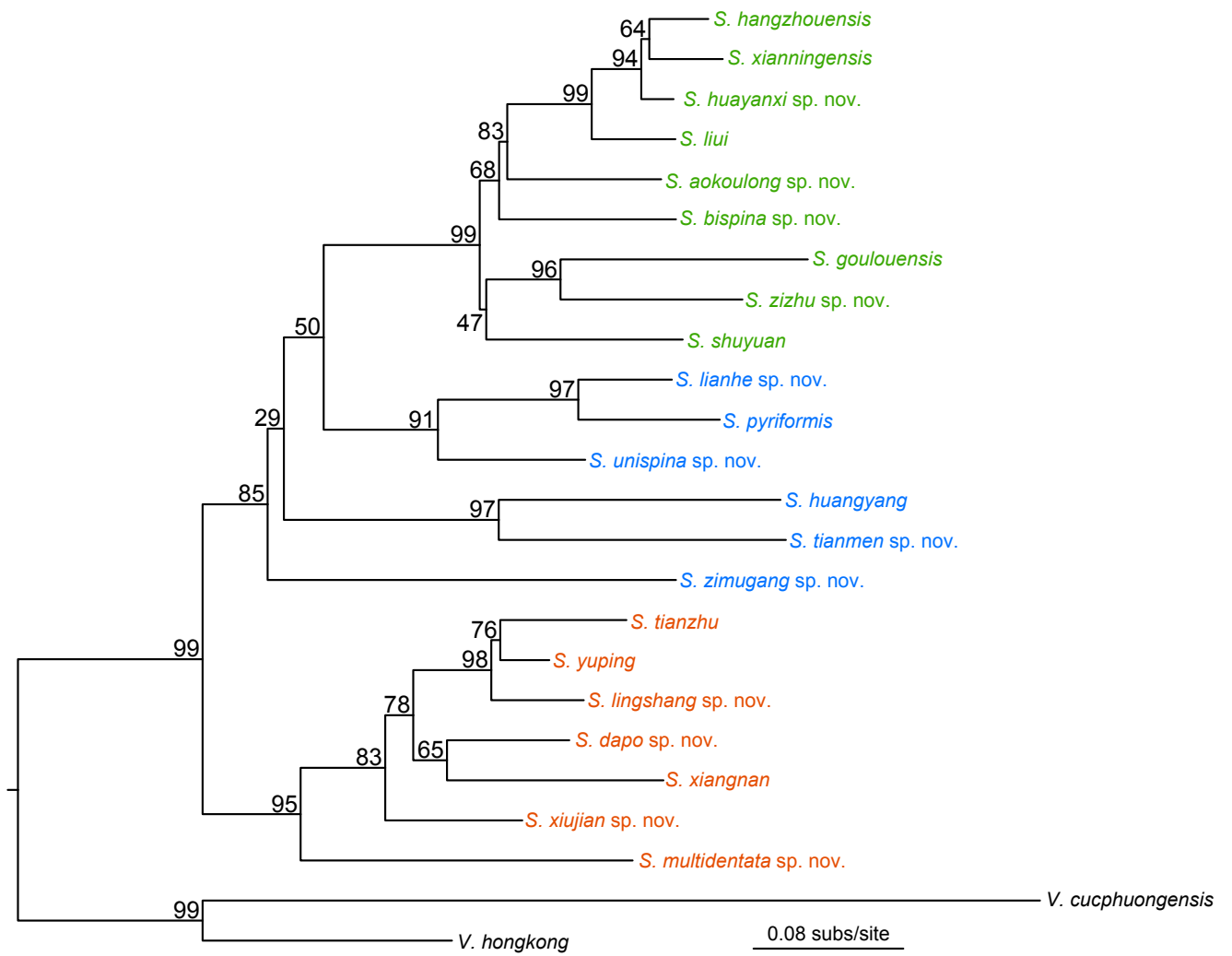


Fig. S1. Maximum likelihood tree for 22 *Songthela* species, rooted using two *Vinathela* species.

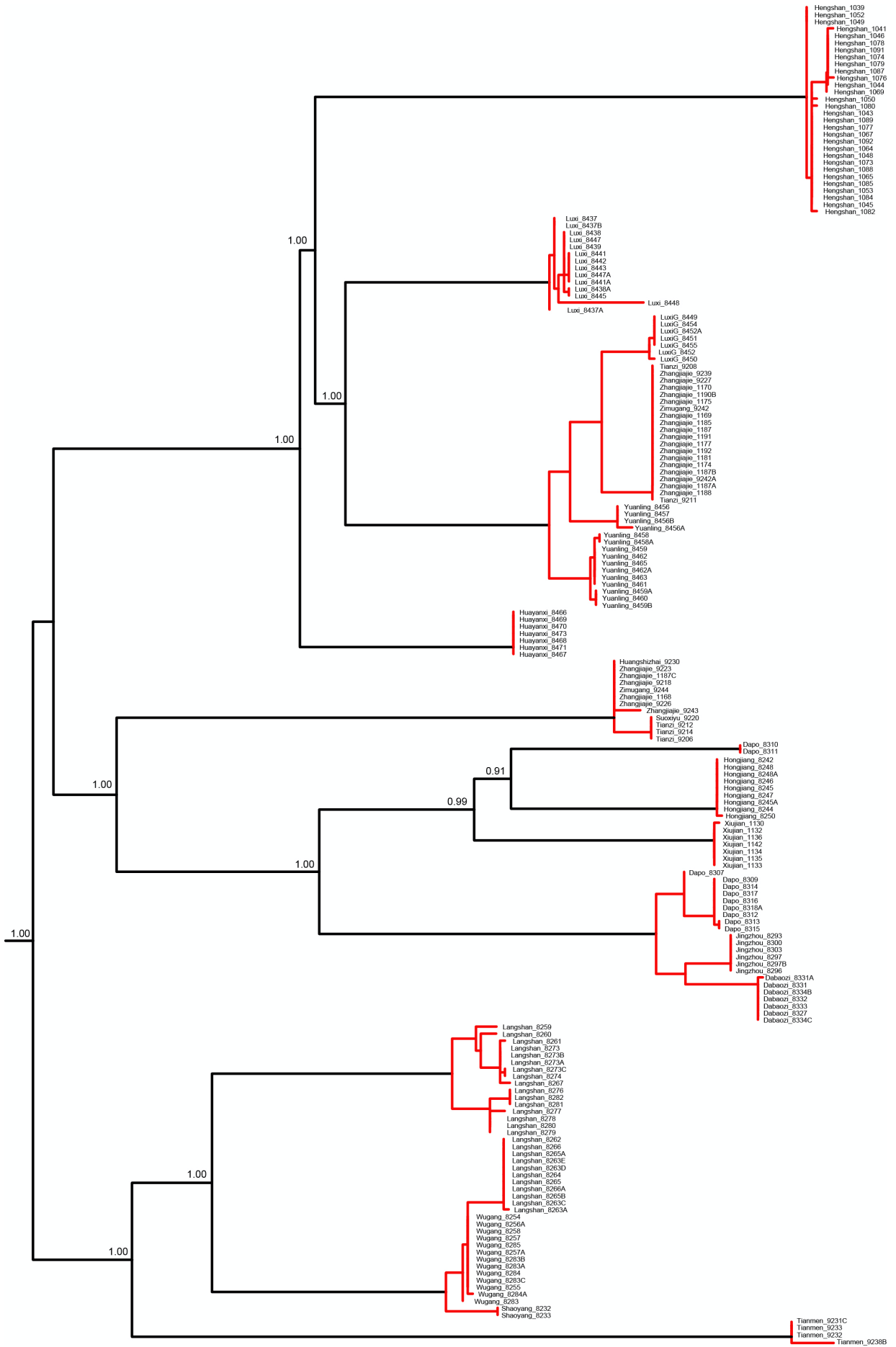


Fig. S2. The summary result of mPTP analyses.