

Supplementary material

In situ* target strength measurement of the black triggerfish *Melichthys niger* and the ocean triggerfish *Canthidermis sufflamen

Julie Salvetat^{A,B,F}, Anne Lebourges-Dhaussy^C, Paulo Travassos^B, Sven Gastauer^D,
Gildas Roudaut^C, Gary Vargas^{A,B} and Arnaud Bertrand^{A,B,E}

^AInstitut de Recherche pour le Développement (IRD), MARBEC, Université de Montpellier, CNRS, IFREMER, IRD, F-34200 Sète, France.

^BDepartamento de Pesca e Aquicultura, Universidade Federal Rural de Pernambuco, Universidade Federal Rural de Pernambuco, Rua Dom Manoel de Medeiros, s/n, Dois Irmãos, CEP 52171-900, Recife, PE, Brazil.

^CInstitut de recherche pour le développement, Unité Mixte de Recherche 6539 Laboratoire des Sciences de l'Environnement Marin, Institut Français de Recherche pour l'Exploitation de la Mer/Institut de recherche pour le développement/Centre National de la Recherche Scientifique/Université de Bretagne Occidentale, Technopole Brest Iroise, F-29280 Plouzané, France.

^DAntarctic Climate and Ecosystem Cooperative Research Centre, University of Tasmania, Private Bag 80, Hobart, Tas. 7001, Australia.

^ELaboratório de Oceanografia Física Estuarina e Costeira, Departamento Oceanografia, Universidade Federal de Pernambuco, Avenida Prof. Moraes Rego, 1235 Cidade Universitária, CEP 50670-901, Recife, PE, Brazil.

^FCorresponding author. Email: ju.salvetat@gmail.com

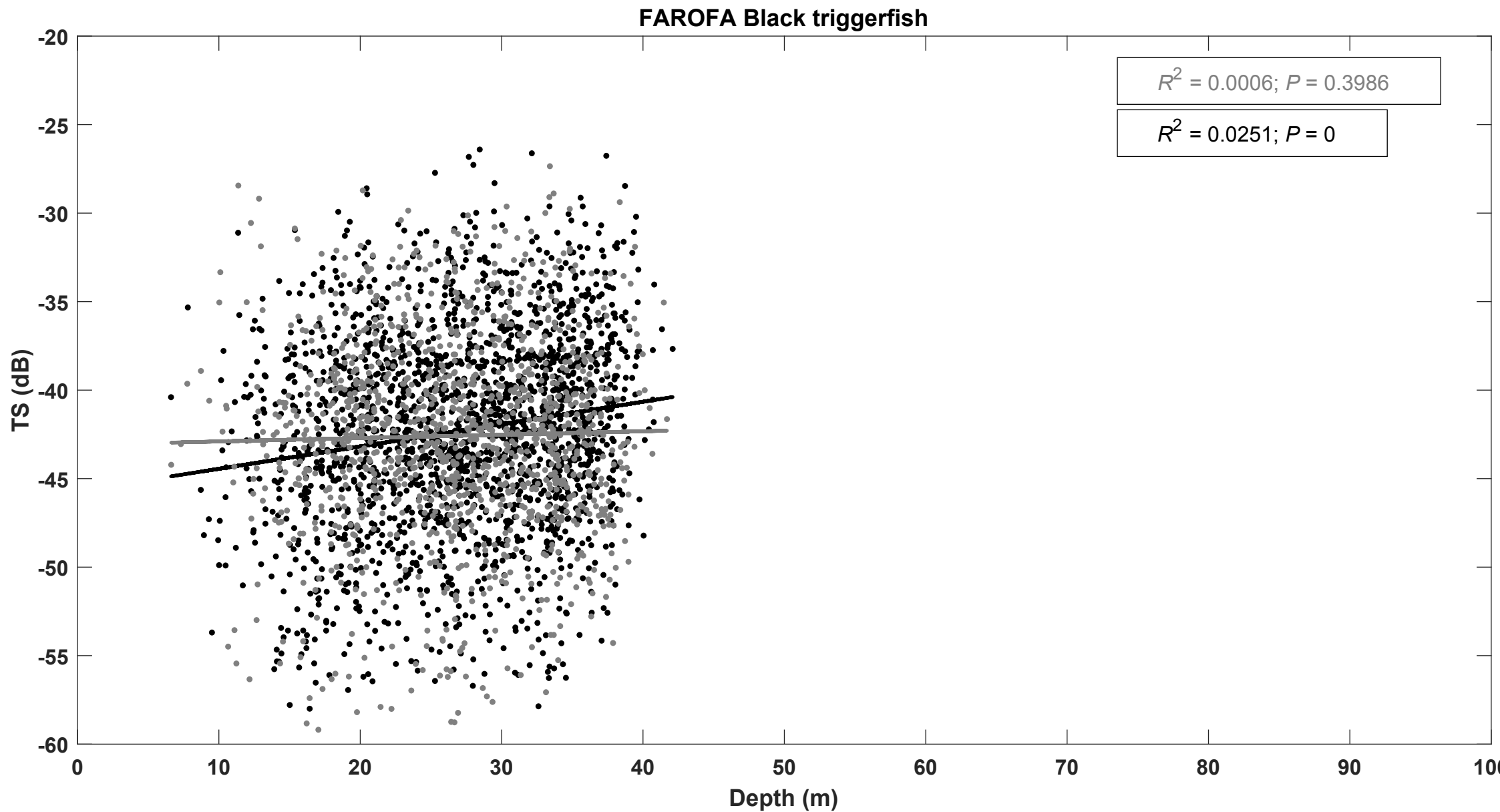


Fig. S1. Distribution of the number of individual in function of the depth for (a) black triggerfish and (b) ocean triggerfish for 70 kHz (grey) and 200 kHz (black).

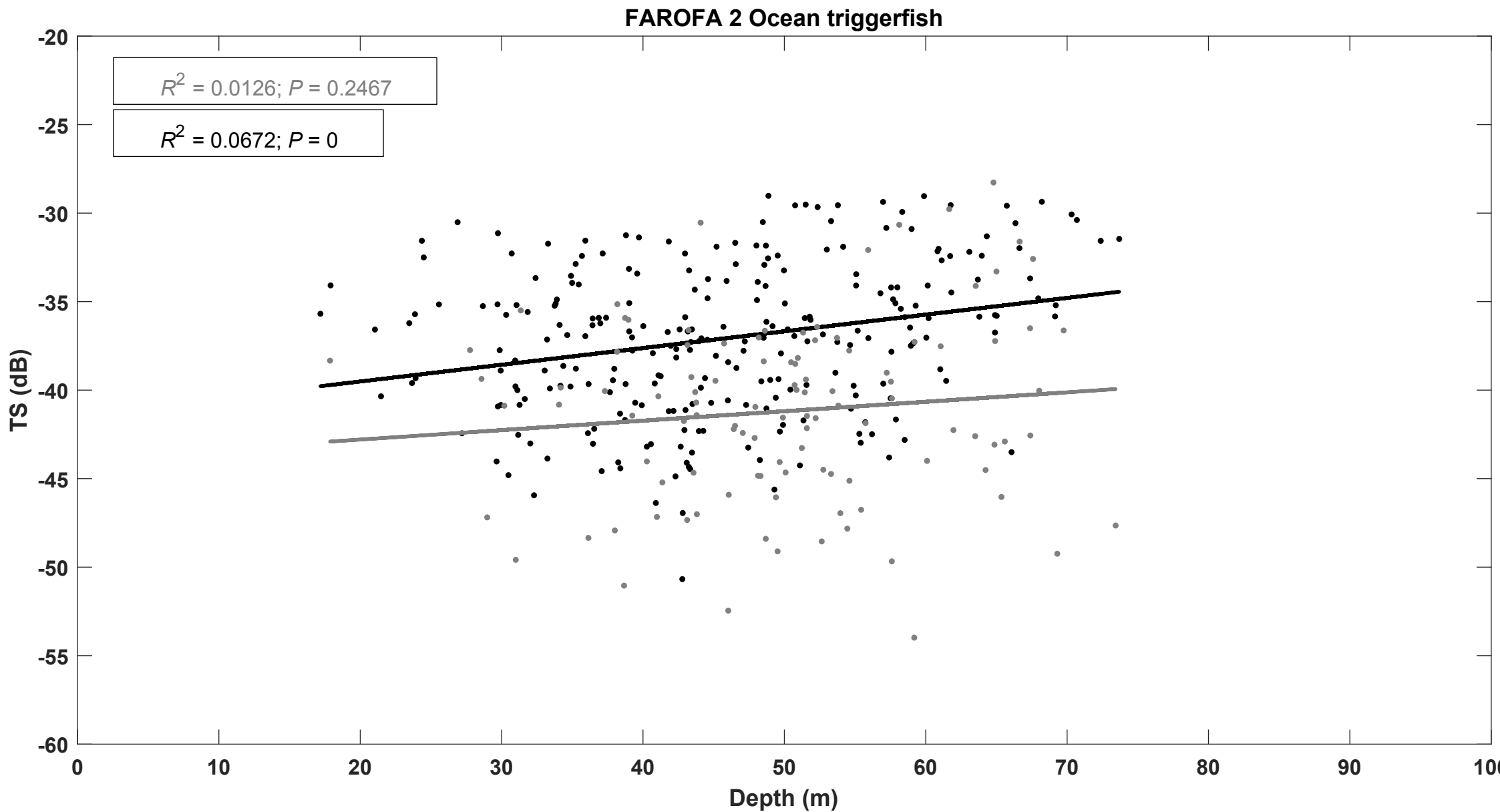


Fig. S2. Depth–TS diagram for black triggerfish in 70 kHz (grey) and 200 kHz (black).

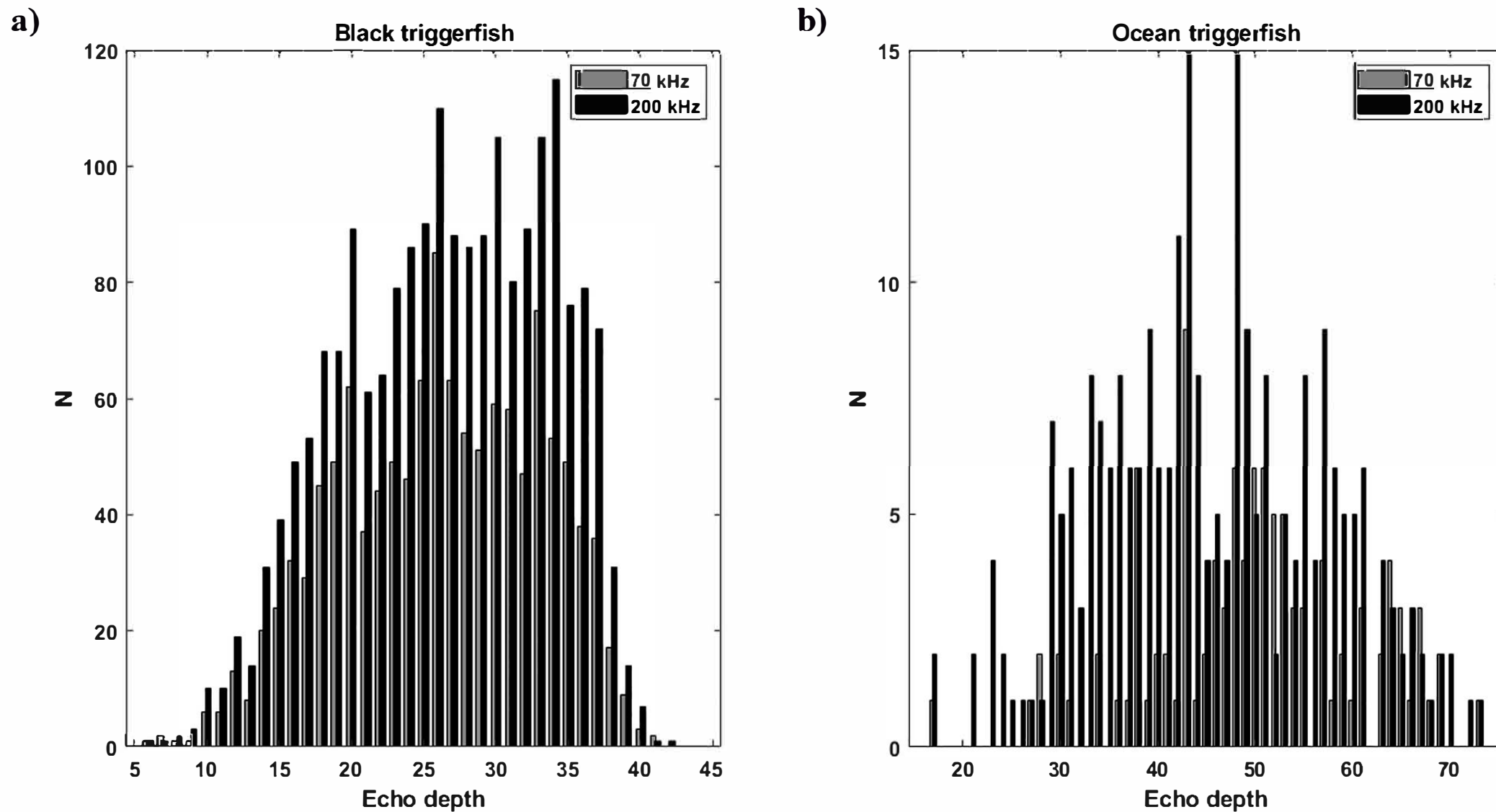


Fig. S3. Depth-TS diagram for ocean triggerfish in 70 kHz (grey) and 200 kHz (black).