

Supplementary Material

Habitat-specific performance of high-frequency acoustic telemetry tags in a tropical marine environment

J. K. Matley^{A,E,*}, *L. Vargas-Araya*^{B,C}, *A. T. Fisk*^A and *M. Espinoza*^{B,D}

^AGreat Lakes Institute for Environmental Research, University of Windsor, Windsor, ON, N9B 3P4, Canada

^BCentro de Investigación en Ciencias del Mar y Limnología, Universidad de Costa Rica, 2060-11501 San José, Costa Rica

^CPosgrado en Gestión Integrada de Áreas Costeras Tropicales, Universidad de Costa Rica, 2060-11501 San José, Costa Rica

^DEscuela de Biología, Universidad de Costa Rica, 2060-11501 San José, Costa Rica

^EPresent address: Department of Aquatic Resources, St Francis Xavier University, Antigonish, NS, B2G 2W5, Canada

*Correspondence to: Email: jordanmatley@gmail.com

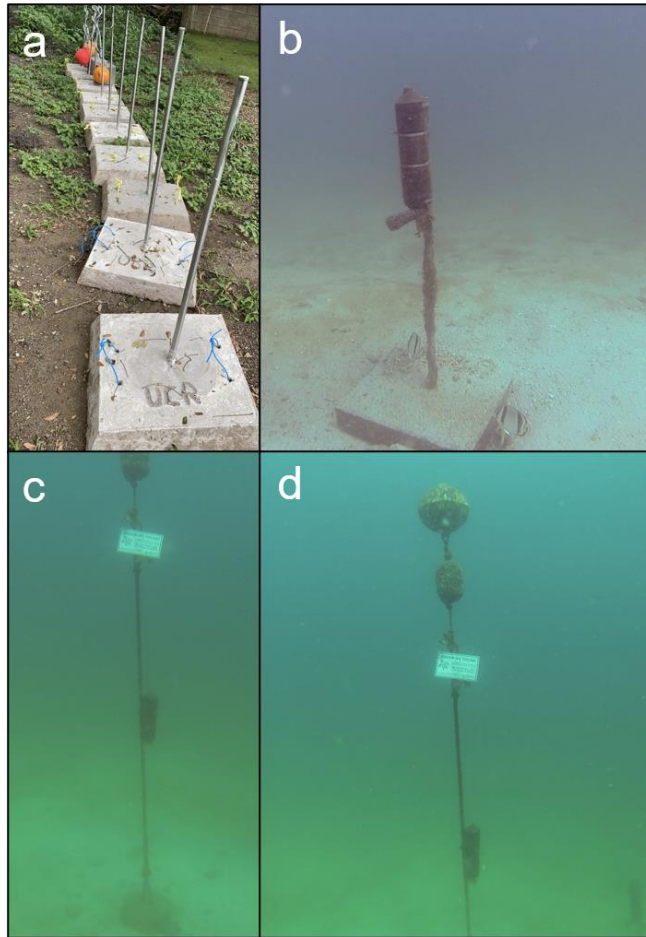


Figure S1. Photos of receiver deployment using either stainless steel rods (a, b) or rope with surface float (c, d).

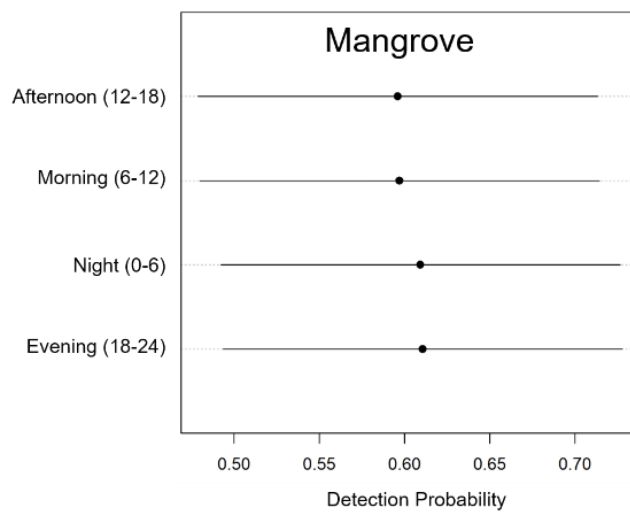


Figure S2. Diel category effect estimates relative to 6-h detection probabilities (DP) within the mangrove habitat predicted from the generalised additive mixed model (GAMM).

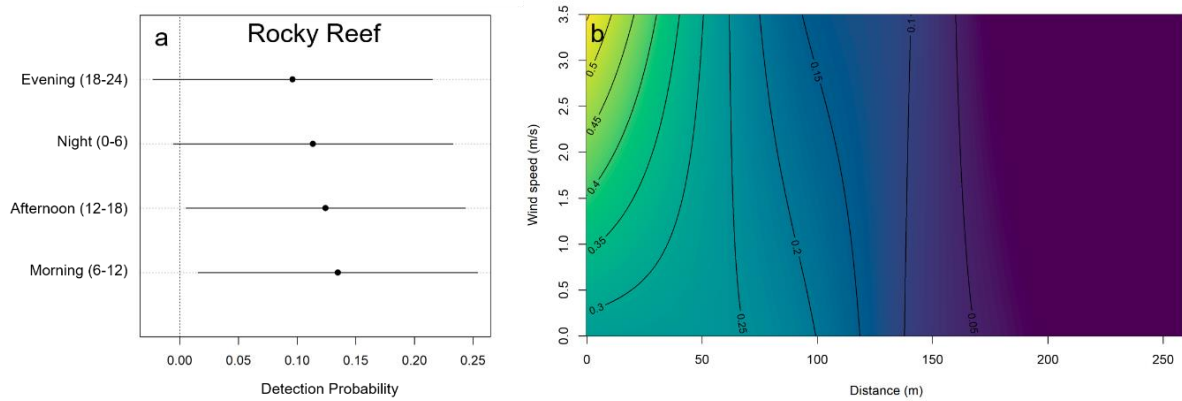


Figure S3: Diel category effect estimates (a) and interaction plot between wind speed and receiver–transmitter distance relative to 6-h detection probabilities (DP) within the rocky reef habitat predicted from the generalised additive mixed model (GAMM).