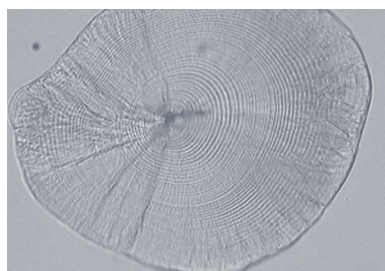




Cover

Kuiper-Linley *et al.* (p. 492) investigated sea turtle regrazing on seagrass meadows within the broader context of herbivore–plant interactions. By simulating regrazing on different seagrass species, they discovered different physiological responses in each seagrass species. Their findings have important implications for herbivore behaviour, feeding physiology and plant community structure.



Rogers and Ward (p. 461) use a 'case building approach' to corroborate a method for estimating age in the cosmopolitan *Sardinops sagax*. They found that catch-at-age data from the fishery may not be representative of the broader population, and therefore there are important implications for assessing fish populations.

CONTENTS

- Influence of local-scale and landscape-scale habitat characteristics on California spiny lobster (*Panulirus interruptus*) abundance and survival
T. T. Mai and K. A. Hovel 419
- The effects of turbidity and complex habitats on the feeding of a galaxiid fish are clear and simple
R. D. Stuart-Smith, J. F. Stuart-Smith, R. W. G. White and L. A. Barmuta 429
- Impact of tadpoles and mosquito larvae on ephemeral pond structure and processes
A. Mokany 436
- Effects of hooking damage and hook type on post-release survival of sand flathead (*Platycephalus bassensis*)
J. M. Lyle, N. A. Moltschanivskyj, A. J. Morton, I. W. Brown and D. Mayer 445
- Affinity of extracellular phosphatases for ELF97 phosphate in aquatic environments
J. Nedoma, F. Van Wambeke, A. Štrojsová, M. Štrojsová and S. Duhamel 454
- Application of a 'case building approach' to investigate the age distributions and growth dynamics of Australian sardine (*Sardinops sagax*) off South Australia
P. J. Rogers and T. M. Ward 461
- Foraminiferal record of ecological impact of deforestation and oyster farms, Mahurangi Harbour, New Zealand
H. R. Grenfell, B. W. Hayward and M. Horrocks 475
- Effects of simulated green turtle regrazing on seagrass abundance, growth and nutritional status in Moreton Bay, south-east Queensland, Australia
M. Kuiper-Linley, C. R. Johnson and J. M. Lanyon 492

EARLY ALERT Sign-up at www.publish.csiro.au/journals/mfr for our electronic early alert and receive the next table of contents weeks in advance of the print version