

Update on Geophysical Survey Progress from the Geological Surveys of Western Australia, South Australia, Northern Territory and Victoria (information current on 10 September 2015)

Further information on these surveys is available from Murray Richardson at GA via email at Murray.Richardson@ga.gov.au or telephone on (02) 6249 9229.

Table 1. Airborne magnetic and radiometric surveys

Survey name	Client	Project management	Contractor	Start flying	Line km	Spacing AGL Dir	Area (km ²)	End flying	Final data to GA	Locality diagram (Preview)	GADDS release
Coompana	GSSA	GA	GPX Surveys	7 Feb 2015	255 265	400 m 80 m E–W	85 910	64.3% complete at 10 Sep 2015	TBA	173: Dec 2014 p. 24	TBA
Delamere/ Spirit Hills	NTGS	GA	Thomson Aviation	20 Jul 2015	96 500 est.	400 m 80 m N–S	33 690	42.7% complete at 6 Sep 2015	TBA	176: Jun 2015 p. 22	TBA
Yalgoo	GSWA	GA	MAGSPEC Surveys	30 May 2015	110 516 est.	100/200 m 50 m E–W	11 200	73.5% complete at 6 Sep 2015	TBA	176: Jun 2015 p. 23	TBA

TBA, to be advised.

Table 2. Gravity surveys

Survey name	Client	Project management	Contractor	Start survey	No. of stations	Station spacing (km)	Area (km ²)	End survey	Final data to GA	Locality diagram (Preview)	GADDS release
Gippsland	GSV	GA	Atlas	30 Jun 2014	1440	12 traverses at 500 m station spacing	8358	100% complete at 21 Jul 2015	Final data expected to be released via GADDS when permission to do so is received from GSV	170: Jun 2014 p. 25	To be released with the North Wiso data
North McArthur Basin	NTGS	GA	Atlas	16 Sep 2014	7175	4 km regular grid with areas of 2 km infill; 1 area of traverses spaced 4 km apart with a station spacing of 1 km	71 030	100% complete at 4 Nov 2014		171: Aug 2014 p. 39	Released on 30 Jul 2015
Ngurrupa	GSWA	GA	Atlas	10 May 2015	5000	2.5 km regular grid	30 700	100% complete at 13 Jun 2015		176: Jun 2015 p. 23	Released on 30 Jul 2015
Northern Wiso Basin	NTGS	GA	Atlas	18 Jun 2015	5020	4 km regular grid with areas of 2 km and 1 km infill	83 240	100% complete at 9 Aug 2015	Preliminary final data supplied to GA in Sep 2015	176: Jun 2015 p. 24	TBA
SW Yilgarn WA	GSWA	GA	Atlas	12 Jun 2015	28 678	2 km along public roads and tracks	175 000	36.5% complete at 7 Sep 2015	TBA	176: Jun 2015 p. 24	TBA
Victoria Basin	NTGS	GA	Atlas	14 Aug 2015	6300	4 km regular grid	99 170	62.3% complete at 6 Sep 2015	TBA	177: Aug 2015 p. 17	TBA
Stavelly	GSV	GA	TBA	Survey Quotation Request in preparation	Approx. 8000 in 9 separate areas	500 m regular grid in 8 areas and 500 m station interval along one traverse	TBA	TBA	TBA	177: Aug 2015 p. 18	TBA

TBA, to be advised.

Table 3. AEM surveys

Survey name	Client	Project management	Contractor	Start flying	Line km	Spacing AGL Dir	Area (km ²)	End flying	Final data to GA	Locality diagram (Preview)	GADDs release
Musgrave Region	GSSA	GA	TBA	TBA	TBA	TBA	TBA	TBA	TBA	The technical specifications of the survey are being planned between GA, GSSA and CSIRO	Since Preview 176 the National Collaboration Framework Agreement was executed between GA and GSSA on 2 Jul 2015
West Kimberley and Ord-Bonaparte	WA Government: Departments of Water, Agriculture and Food	GA	TBA	Late Sep 2015	7837	Various +/- traverses	TBA	TBA	TBA	Current issue (Figures 1 and 2)	The Quotation Request was released on 25 Aug 2015 and closed on 8 Sep 2015. The proposed West Kimberley survey covers the Derby, Lennard River, Mount Anderson and Noonkanbah Standard 1:250 k map sheets. The Ord-Bonaparte survey covers the Medusa Banks, Port Keats, Cambridge Gulf and Auvergne standard 1:250 k map sheets

TBA, to be advised.

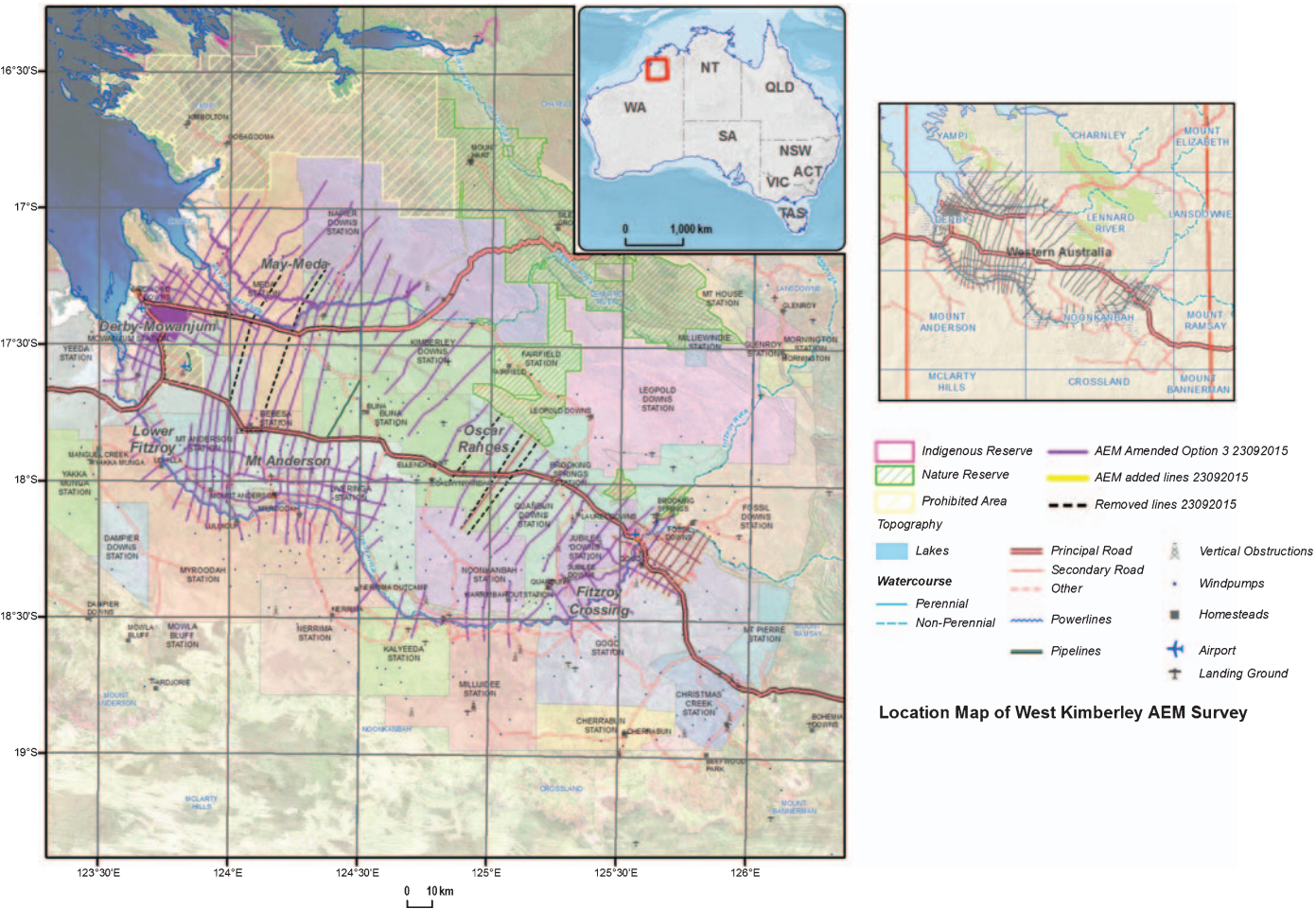


Figure 1. Proposed West Kimberley AEM survey.

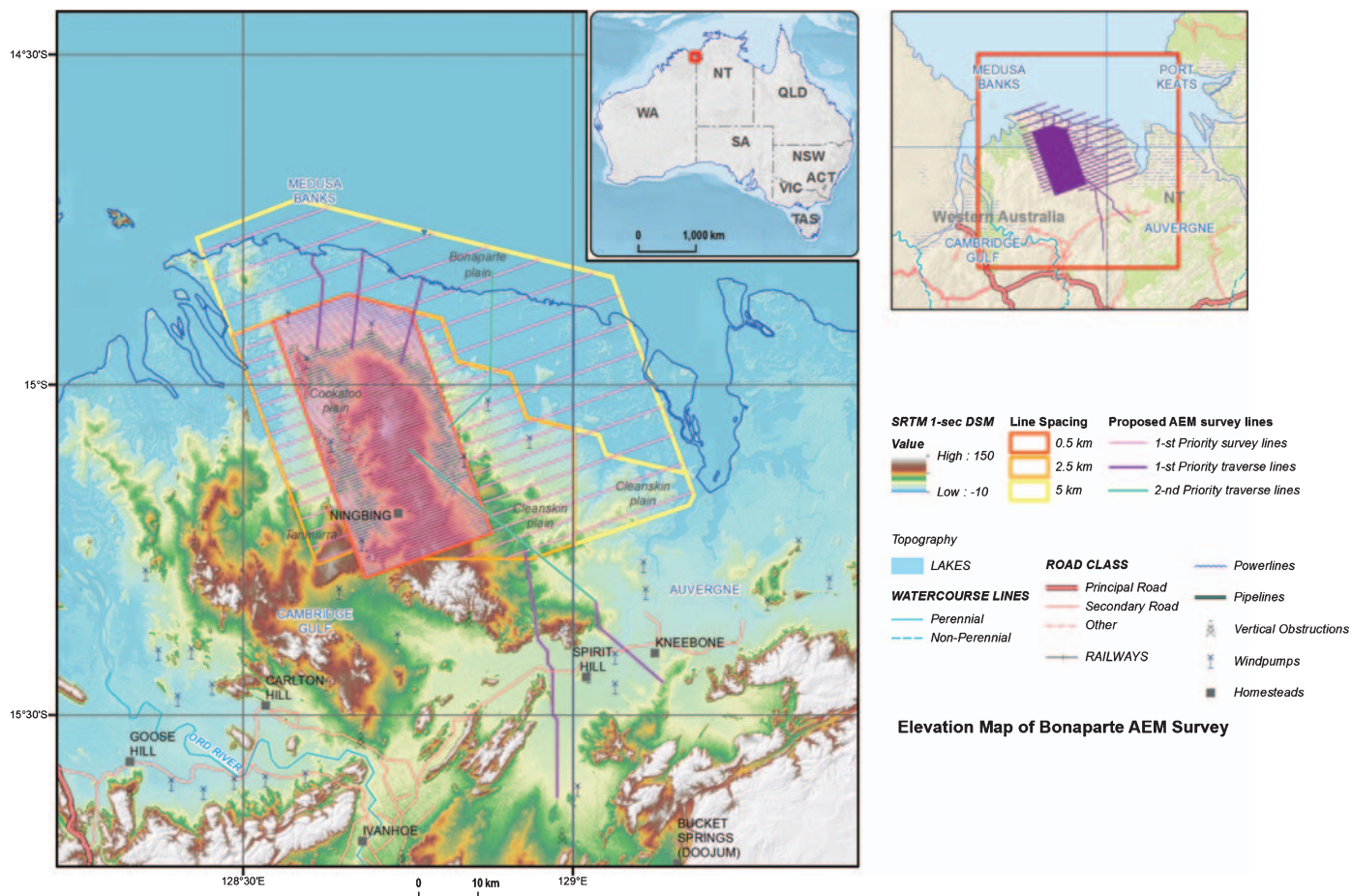
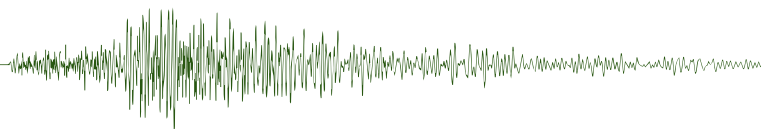


Figure 2. Proposed Ord-Bonaparte AEM survey.



GEM
GEOPHYSICS

**SPECIALISTS IN GROUND
ELECTRO MAGNETIC SURVEYS
FOR MINERAL EXPLORATION
AUSTRALIA & INTERNATIONAL**

FOCUS

- Latest technology
- Exceptional data quality
- Experienced personnel
- Environment and Safety
- Personal client service

TECHNOLOGY

Surface EM Surveys

- SMARTem 24 low noise receiver
- Samson Total Field Surveys
- Moving Loop and Fixed Loop Surveys

Down Hole EM Surveys

- DigiAtlantis

Phone: +61 8 9739 2011 • Fax: +61 8 9739 2012

Email: gem@gemgeophysics.com.au

Web: www.gemgeophysics.com.au

New detailed magnetic image of SA

To aid a number of new projects the geophysicists at GSSA recently reprocessed and merged 287 magnetic surveys covering the WPA (Woomera Prohibited Area), EGP (Eastern Gawler Province) and SGRV (Southern Gawler Ranges Volcanics). The merge (Figure 1) will be used for exploration targeting with statistical cluster analysis, 3D inversions and mapping for the Mineral Systems Drilling Programme operating in the SGRV. The latter is a collaboration between the GSSA, DET CRC and industry to assess real time analysis of drilling data and construct regional vectors, including geophysics, for possible mineralisation vectors.

The merged grid will be available for download through http://minerals.statedevelopment.sa.gov.au/geoscience/geoscientific_data/new_releases and details of the drilling programme at http://minerals.statedevelopment.sa.gov.au/geoscience/geological_survey/gssa_projects/mineral_systems_drilling

Tim Keeping

tim.keeping@sa.gov.au

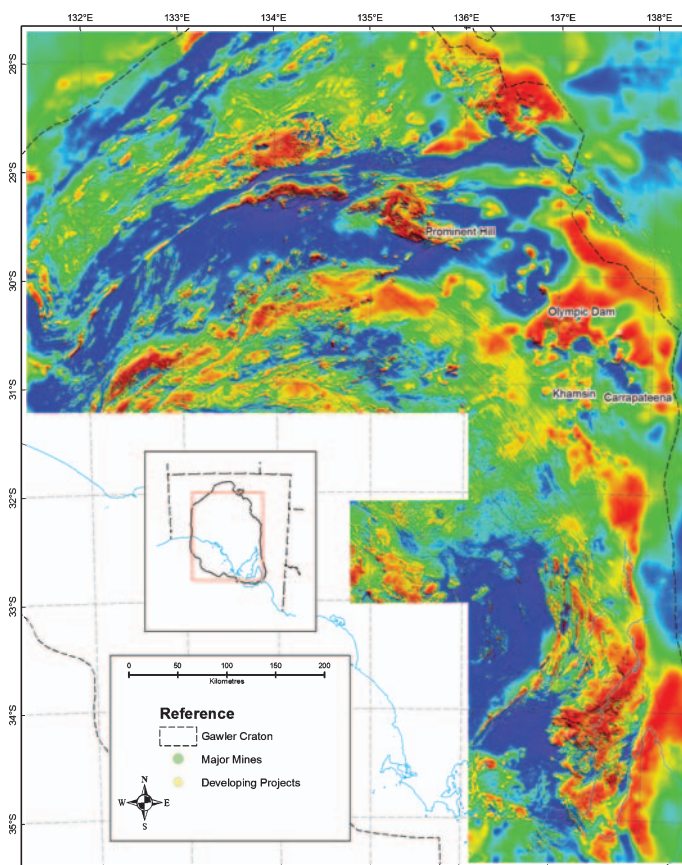


Figure 1. New detailed magnetic image of South Australia.

Helping to target your resources

Next time you need a survey, call Zonge.

- use our **high powered** systems and latest technology for:
 - surface 2D and 3D IP/EM/NanoTEM/CSAMT/AMT/NMR
 - downhole IP/EM/MMR/NMR
- experienced, safe teams in any location
- efficient survey design
- quality data second to none
- highly responsive service

Call Zonge today +61 8 8371 0020

e zonge@zonge.com.au

w zonge.com.au

Electrical geophysical solutions

Resource exploration, environmental and geotechnical applications

