

Supplementary Material

Impacts of ‘Curiosity’ baiting on feral cat populations in woodland habitats of Kangaroo Island, South Australia

Rosemary Hohnen^{A,B,}, James Smith^C, Josh Mulvaney^C, Tom Evans^C and Trish Mooney^C*

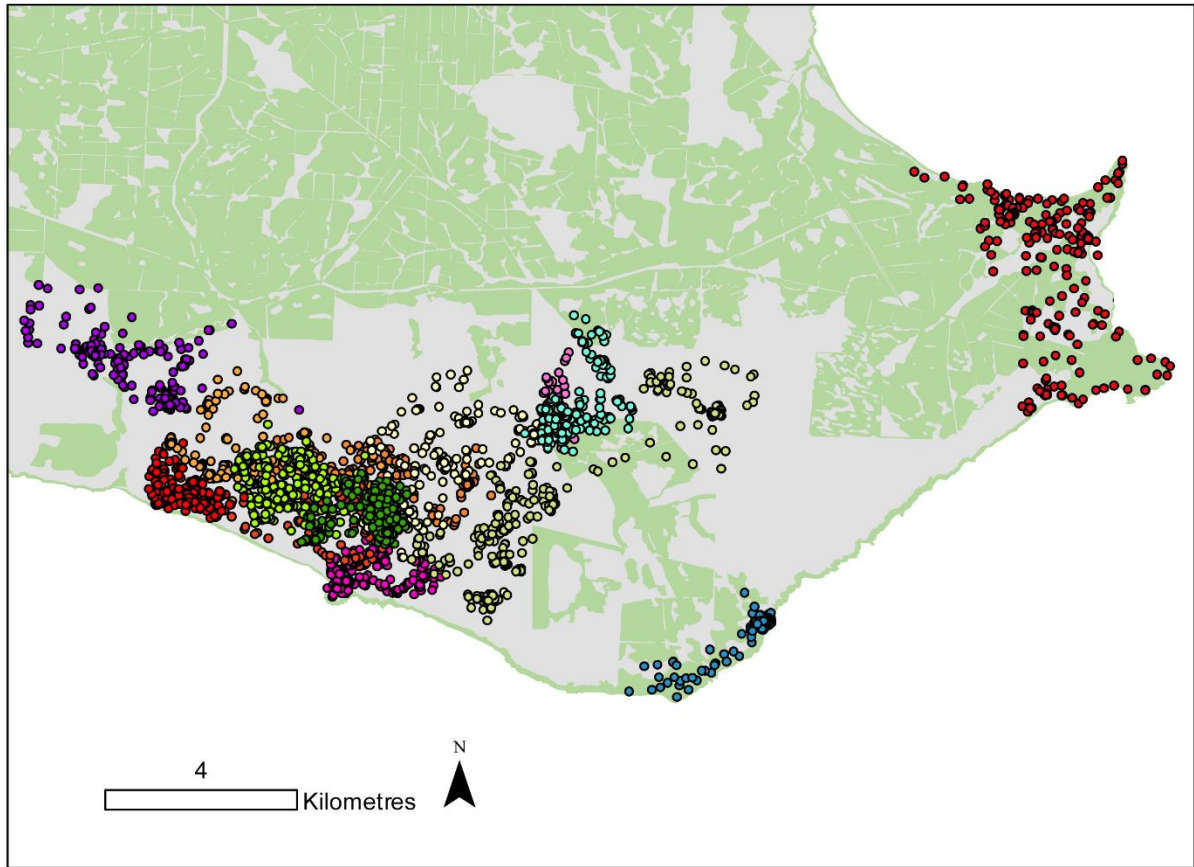
^AResearch Institute for the Environment and Livelihoods, Building Yellow 2, Casurina Campus, Charles Darwin University, Ellengowan Drive, Darwin, NT 0810, Australia

^BNRM South, 297 Macquarie Street, South Hobart, Tas. 7004, Australia

^CKangaroo Island Landscape Board, 37 Dauncey Street, Kingscote, SA 5223, Australia

*Correspondence to: Email: rosemary.hohnen@cdu.edu.au

SUPPLEMENTARY MATERIAL

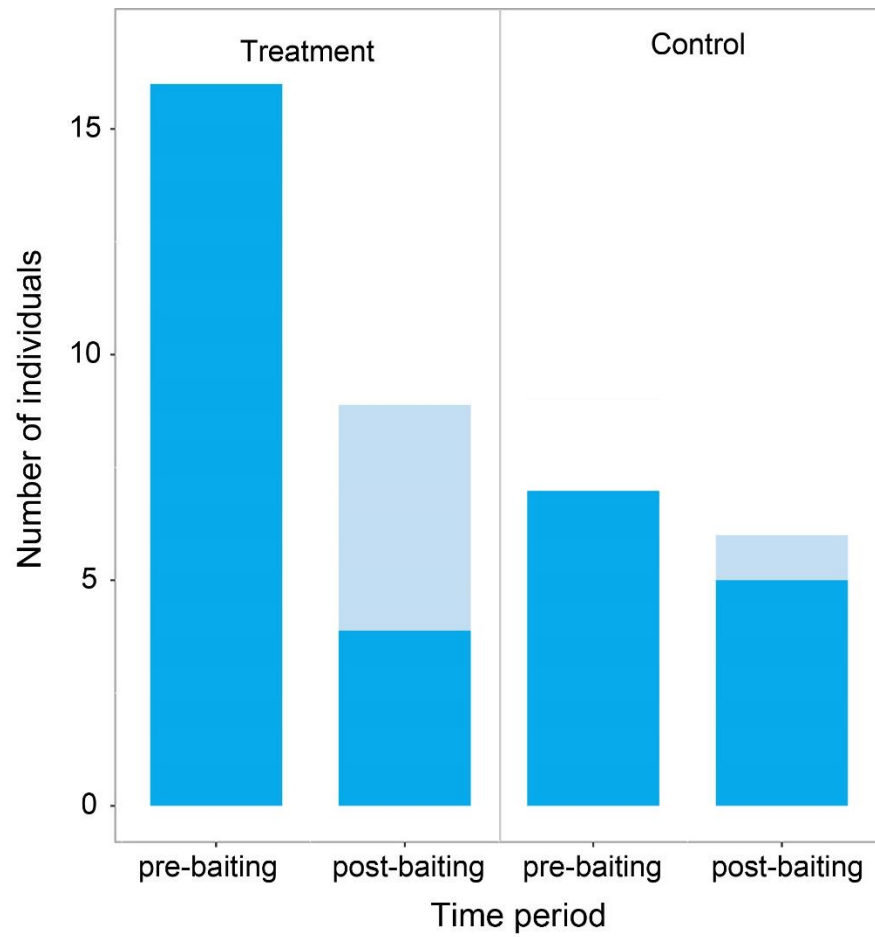


Supplementary Figure 1. One week of location data of the 14 GPS collared cats moving around the site prior to baiting, from the 8th till the 15th of June (the day before baiting). The black line indicates the zone within which 'Curiosity' baits were deployed, green indicates woodland, and grey indicates open areas (such as dunes) or farmland.

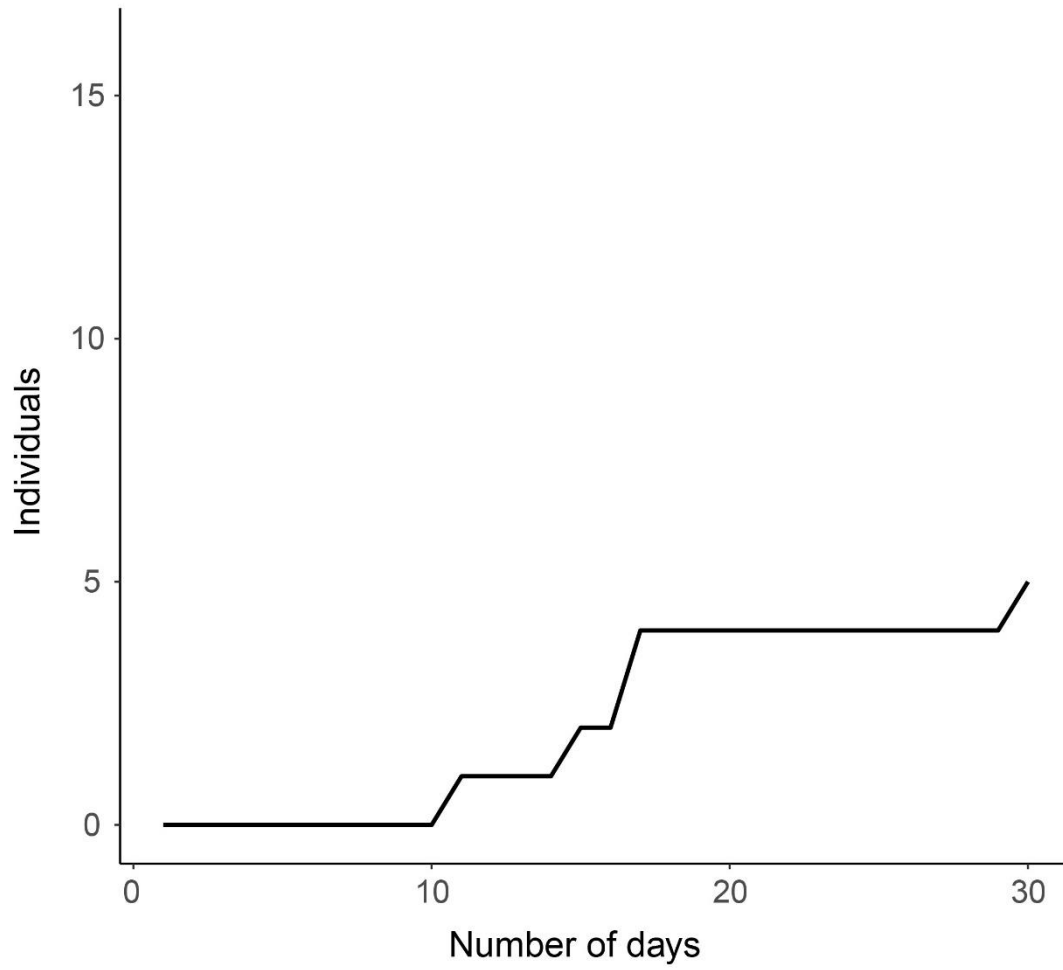
Supplementary Table 1. Showing the models in the estimation of feral cat density at the treatment and control sites both pre and post baiting.

Time period	Model						
	g0	Sigma	Log likelihood	AIC	AICc	Delta AICc	AICc weight
Treatment pre baiting	1	h2	-259.3	528.5	534.5	0	1
	V1	1	-269.6	547.2	550.8	16.3	0
	1	1	-274.9	555.8	557.8	23.3	0
	t	1	-503.1	1014.1	1017.8	483.2	0
	1	t	-504.0	1015.9	1019.6	485.0	0
	b	1	-504.5	1016.9	1020.6	486.0	0
Treatment post-baiting	V1	1	-72.0	151.9	161.9	0	1
	1	1	-90.1	186.3	191.1	29.2	0
	1	h2	-83.4	176.7	196.7	34.8	0
	1	t	-177.8	363.5	373.5	211.6	0
	b	1	-178.3	364.6	374.6	212.6	0
	t	1	-179.9	367.7	377.7	215.8	0
Control pre-baiting	V1	1	-42.7	93.4	106.8	0	1
	1	1	-53.5	113.1	119.1	12.3	0
	1	h2	-53.4	116.8	146.8	40.0	0
	1	t	-107.6	223.1	236.5	129.7	0
	b	1	-107.7	223.4	236.8	130.0	0
	t	1	-107.7	223.5	236.8	130.0	0
Control post-baiting	1	1	-32.8	71.6	83.6	0	1
	V1	1	-27.1	62.3	102.3	18.7	0
	t	1	-63.2	134.4	174.4	90.8	0
	b	1	-63.3	134.6	174.6	91.0	0
	1	t	-63.4	134.8	174.8	91.1	0
	1	h2*					

*Model did not converge



Supplementary Figure 2. Illustrating the number of individual cats detected at each site before and after baiting, with the number of new cats (not seen at that site before baiting) indicated by light blue, and cats seen before baiting indicated by dark blue.



Supplementary Figure 3. Illustrating the number of days after baiting occurred at the treatment site (Simpson Conservation Park) that new individual cats were detected.