

**Supplementary material for**

**Incidence of sarcoptic mange in bare-nosed wombats (*Vombatus ursinus*)**

Hayley J. Stannard<sup>A,B</sup>, Jack Wolfenden<sup>A</sup>, Eden M. Hermsen<sup>A</sup>, Blaire T. Vallin<sup>A</sup>, Nicole E. Hunter<sup>A</sup> and Julie M. Old<sup>A,C</sup>

<sup>A</sup>School of Science and Health, Hawkesbury, Western Sydney University, Penrith, NSW 2751, Australia

<sup>B</sup>Current Address: School of Animal and Veterinary Sciences, Charles Sturt University, Wagga Wagga, NSW 2678, Australia

<sup>C</sup>Corresponding author. Email: [j.old@westernsydney.edu.au](mailto:j.old@westernsydney.edu.au)



Figure S1 Map of Wolgan Valley site showing spotlighting transect

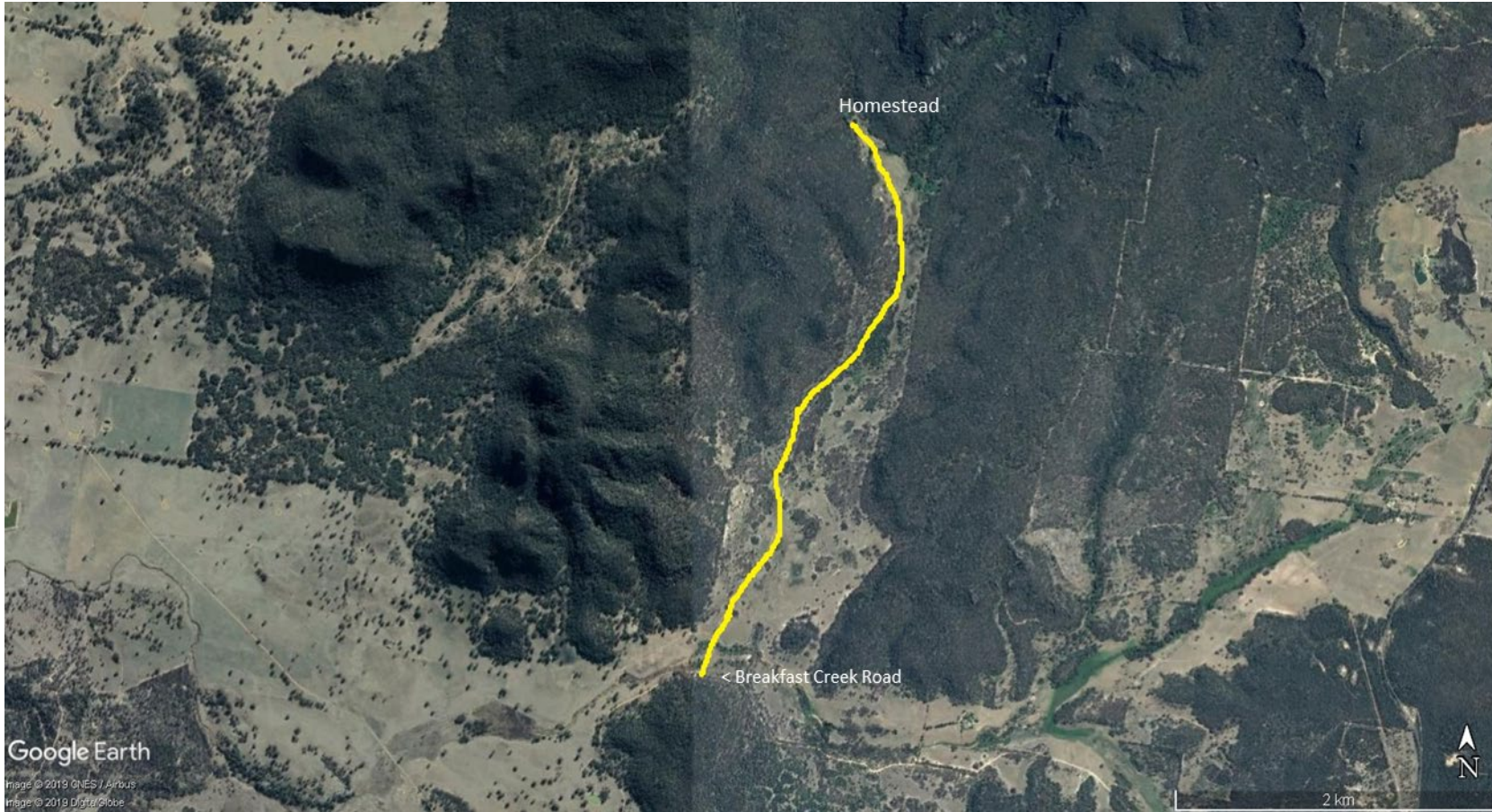


Figure S2. Map of Badger Ground site showing spotlighting transect

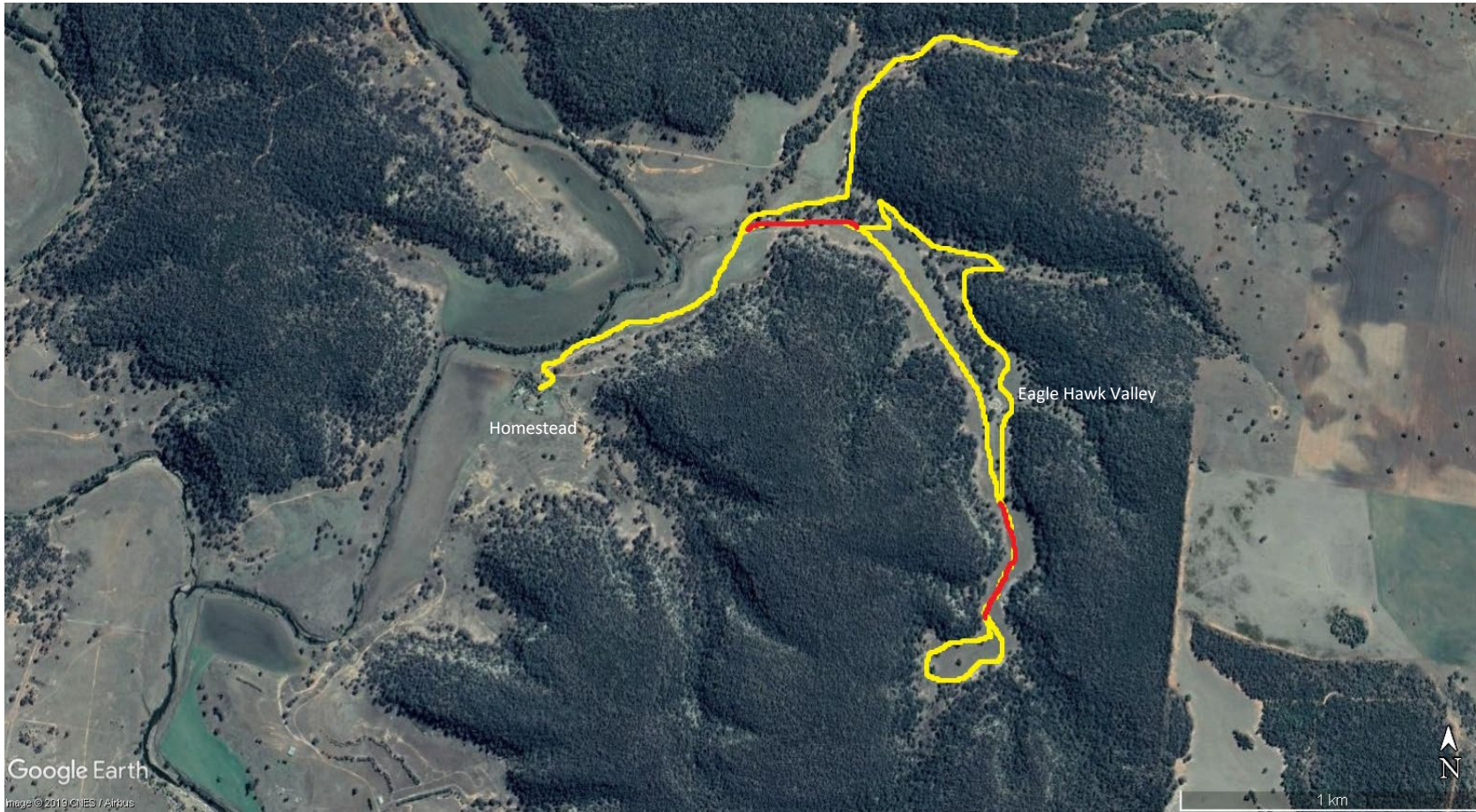


Figure S3. Map of Eagle's Drift site showing spotlighting transect. Red lines indicate where an overlap occurs. Animals were only counted on the first drive through the red sections.

Table S1. Total monthly rainfall (mm) for the Wolgan Valley Site (data from Lidsdale (Maddox Lane) Station (Bureau of Meteorology 2019))

	Jan	Feb	Mar	Apr	May	Jun	Jul	Aug	Sep	Oct	Nov	Dec	Yearly total
2011	63	68.2	78	23.8	42.4	41.2	18.2	54.8	65.4	36.8	158	86	735.8
2013	87.4	149	43.2	26.8	23.6	87	19.6	22.4	44	20.8	68.6	38.4	630.8
2014	9.2	85	155	63	14	43.2		56.4	35.2	51.6	36.8	160.4	709.8
2015	156.2	21.2	39.4	158.2	25.2	24.8	44.6	43.8	9.8	58	63.6	58.6	703.4
2016	142	28.8	69.6	6.2	26	173.4	91.4	52.2	118.6	71.4	58.4	86.4	924.4
2017	37.2	12.2	141.4	21.2	32.6	19.6	6.6	41.8	4.2	106	28.8	75.2	526.8

Table S2. Mean monthly temperature (°C) for the Wolgan Valley Site (data from Lithgow (Coerwull) Station (Bureau of Meteorology 2019))

	Jan	Feb	Mar	Apr	May	Jun	Jul	Aug	Sep	Oct	Nov	Dec
2011	25.7	25.4	21.1	16.5	13.4	10.2	9.9	13.7	16.3	17.5	22.6	19.2
2013	28.2	23.1	21.7	19	14.8	11.4	12.5	13.4	19.3	21	21.4	26
2014	27.2	25.7	21.4	20.1		11.3	10.9	11.9	15.6	20.8	26	25
2015	23.9	24.1	23.8	16.9	13.8	12.4	10	12	14.9	22	22.9	25.3
2016	24.4	25.8	24.6	21.5	16.5	11.1	11	12.4	14.5	17.4	22.9	26.4
2017	28.5	28.7	21.7	17.8	15.1	12.1	12.1	12.4	17.2	20.9	21.2	25.9

Table S3. Total monthly rainfall (mm) for the Badger Ground site (data from Rylstone Station (Bureau of Meteorology 2019))

	Jan	Feb	Mar	Apr	May	Jun	Jul	Aug	Sep	Oct	Nov	Dec	Yearly total
2015		24.6	57.5	101	48.9	40.5	45.2	21	0	18.5	121	62	540.2
2017	58.6	6.4	80.5	19.3	22.4	17.2	0	25.9	4.1	22.3	40.9	47.5	345.1

Table S4. Mean temperature (°C) for the Badger Ground site (data from Nullo Mountain Station (Bureau of Meteorology 2019))

	Jan	Feb	Mar	Apr	May	Jun	Jul	Aug	Sep	Oct	Nov	Dec
2015	22.2	22	22.5	15.8	12	10.4	8.4	10.6	13.4	20.5	21	23
2017	26.7	27.1	20.2	15.6	13.2	10.3	10.5	11.3	16	19.3	19.6	24.2

Table S5. Total monthly rainfall (mm) for the Eagle’s Drift site (data from Merriwa (Roscommon) Station (Bureau of Meteorology 2019))

	Jan	Feb	Mar	Apr	May	Jun	Jul	Aug	Sep	Oct	Nov	Dec	Yearly total
2015	83.8	23.2	48.4	113.2	61.4	33.4	41.6	58.2	4.4	40.2	107.6	92	707.4
2017	58.8	10.4	162	16.8	18.8	20	2.6	33.6	4.4	31.8	37.4	70.2	466.8

Table S6. Mean temperature (°C) for the Eagle’s Drift site (data from Merriwa (Roscommon) Station (Bureau of Meteorology 2019))

	Jan	Feb	Mar	Apr	May	Jun	Jul	Aug	Sep	Oct	Nov	Dec
2015	29.5	30.3	29.8	22.3	18.4	16.1	14.3	17.1	20.2	27.8	28.1	29.9
2017	34.1	35.1	28.2	22.3	20	17	17.6	18.5	23.8	26.8	27	31.8